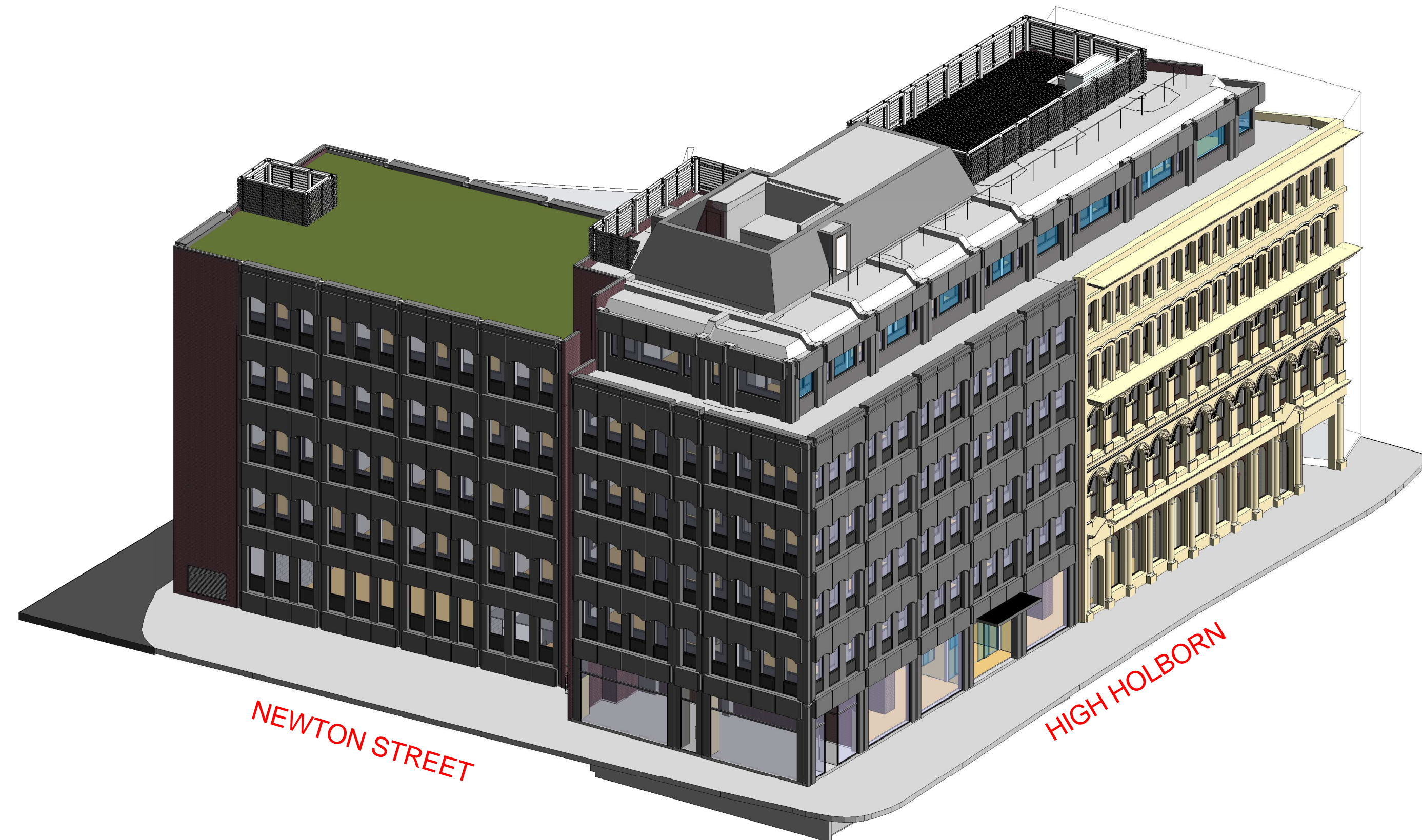


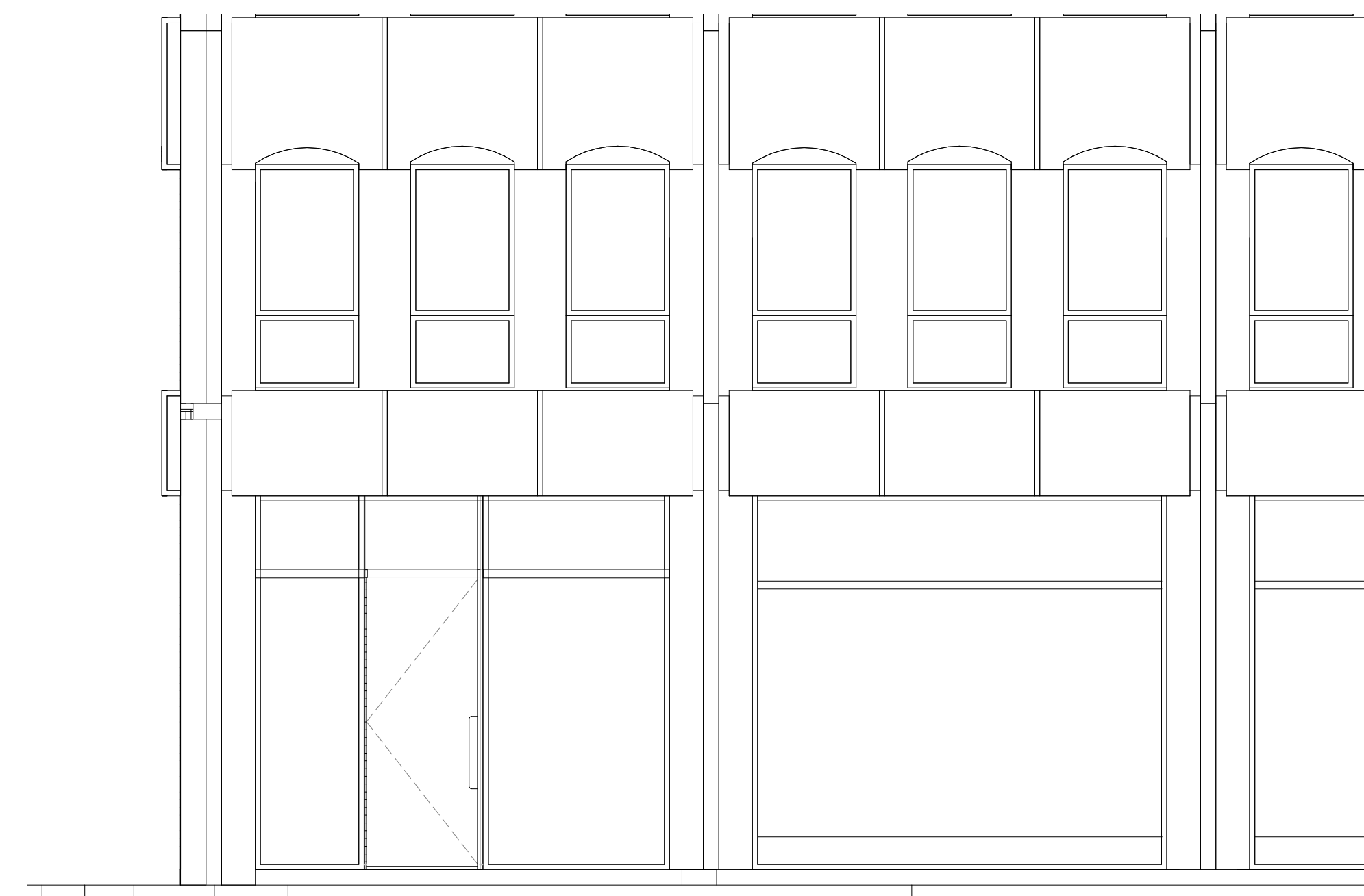
RETAIL FRONTAGE PLAN
1 : 50



RETAIL UNIT - FRONTAGE - 3D REPRESENTATION



RETAIL UNIT - FRONTAGE - EAST ELEVATION (PROPOSED)
1 : 50



RETAIL UNIT - FRONTAGE - NORTH ELEVATION (PROPOSED)
1 : 50

Responsibility is not accepted for errors made by others in scaling from this drawing. All construction information should be taken from figured dimensions only.

0mm 50mm 100mm

A1 Original Sheet Size

date	rev	name	chk	note
30/06/2014	A	NBH	AB	Entrances amended

© Stride Treglown Limited 2012.

Stride Treglown

Architecture Town Planning Interior Design Building Surveying Landscape Design Graphic Design
3 Cosser Street, London, SE1 7BU
T 020 7401 0700 F 020 7401 0701 www.stridetreglown.co.uk

PROJECT
HOXTON HOTEL HOLBORN
199-206 HIGH HOLBORN
LONDON WC1V 7BU

DRAWING TITLE
RETAIL UNIT - FRONTAGE

STATUS

INFORMATION			
SCALE	DATE	DRAWN BY	CHECKED BY
1 : 50	27/05/2014	NBH	AB
PROJECT NUMBER	DRAWING NUMBER	REVISION	
20918	AP(00)9018	A	

C:\Revt\Local20918_HH_CONSTRUCTION_2013_Nik Hoggarth.rvt 30/06/2014 18:17:13