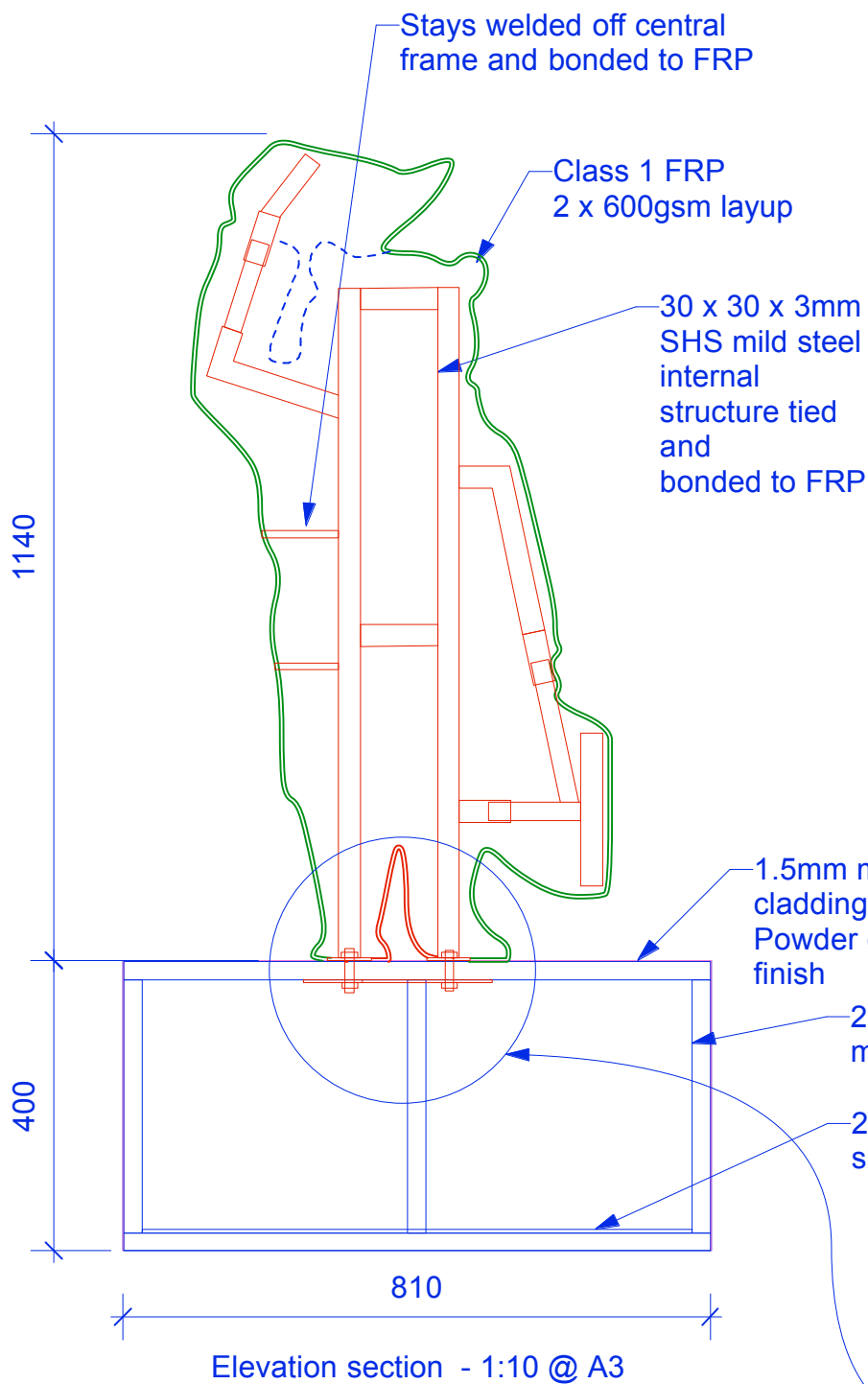


Paddington Trail Plinth proposal + material specification + weights

PT plinth v1

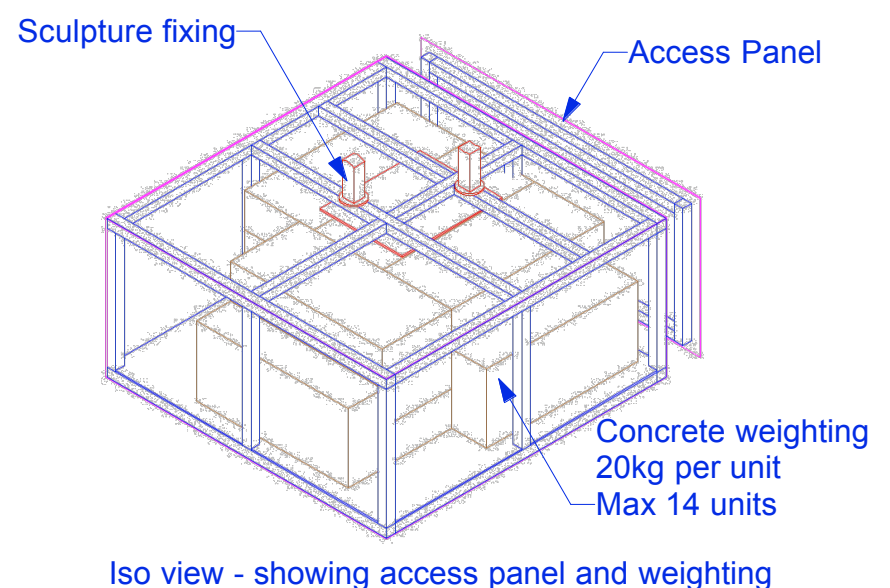
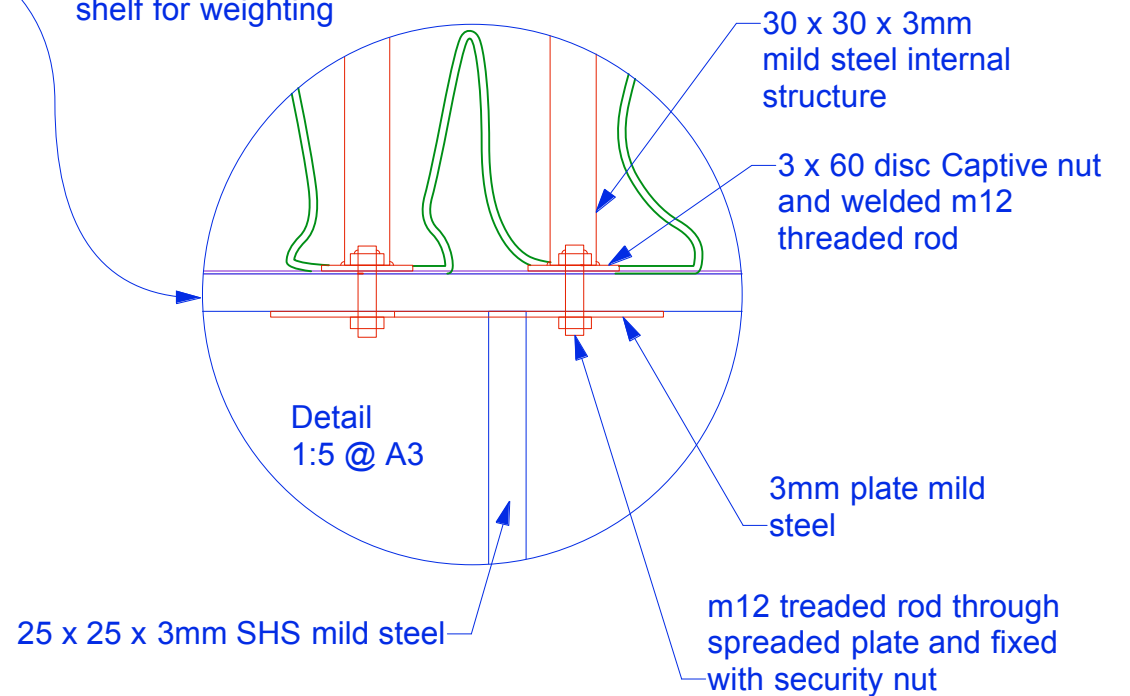
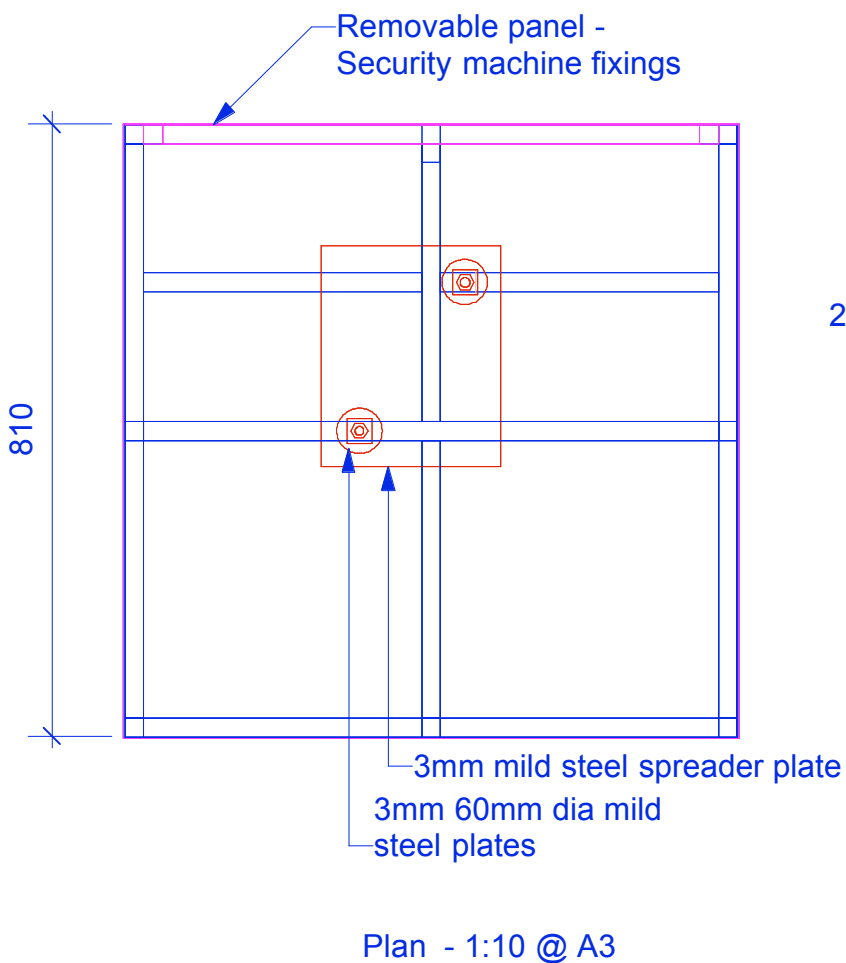


Material Specifications

Material Description	Area + Use
Mild steel SHS and plate	Plinth and internal structure for sculpture
FRP laminated sculpture Class 1 polyester resin + 2 x 450gsm CSM reinforcement	Sculpture material + fire retardancy Resin 3355-W-3 (Ras) PDF files
Decorative paint layer - water based	Surface decoration of sculpture Decorative
Exterior 2 pack PU glaze -	Surface protection of sculpture Decorative
Powder coating	Exterior cladding of plinth Decorative + LUL certification Powder Coat LUL Certificate 2006 PDF file

Intumescent coating note - Intumescent coatings are primarily for upgrading substrates where the highest rating is required they will affect the quality of decorative finish and so not used unless requested.

Weights	
FRP sculpture	35kg
Plinth	45kg
Concrete incremental at 20kg	280kg
Total Max	360kg



3D Eye Limited
41-43 Stirling Road South Acton
London W3 8DJ
Telephone +44(0)208 992 7777
Facsimile +44 (0)208 993 7050
www.3-d-eye.co.uk

Client:

PREM PR

Job:

Paddington Trail

Drwg Title:

Plinth proposal
PT plinth v1

Scale:

AS SHOWN@A3

Drawn by: BC

Date: 02.06.14