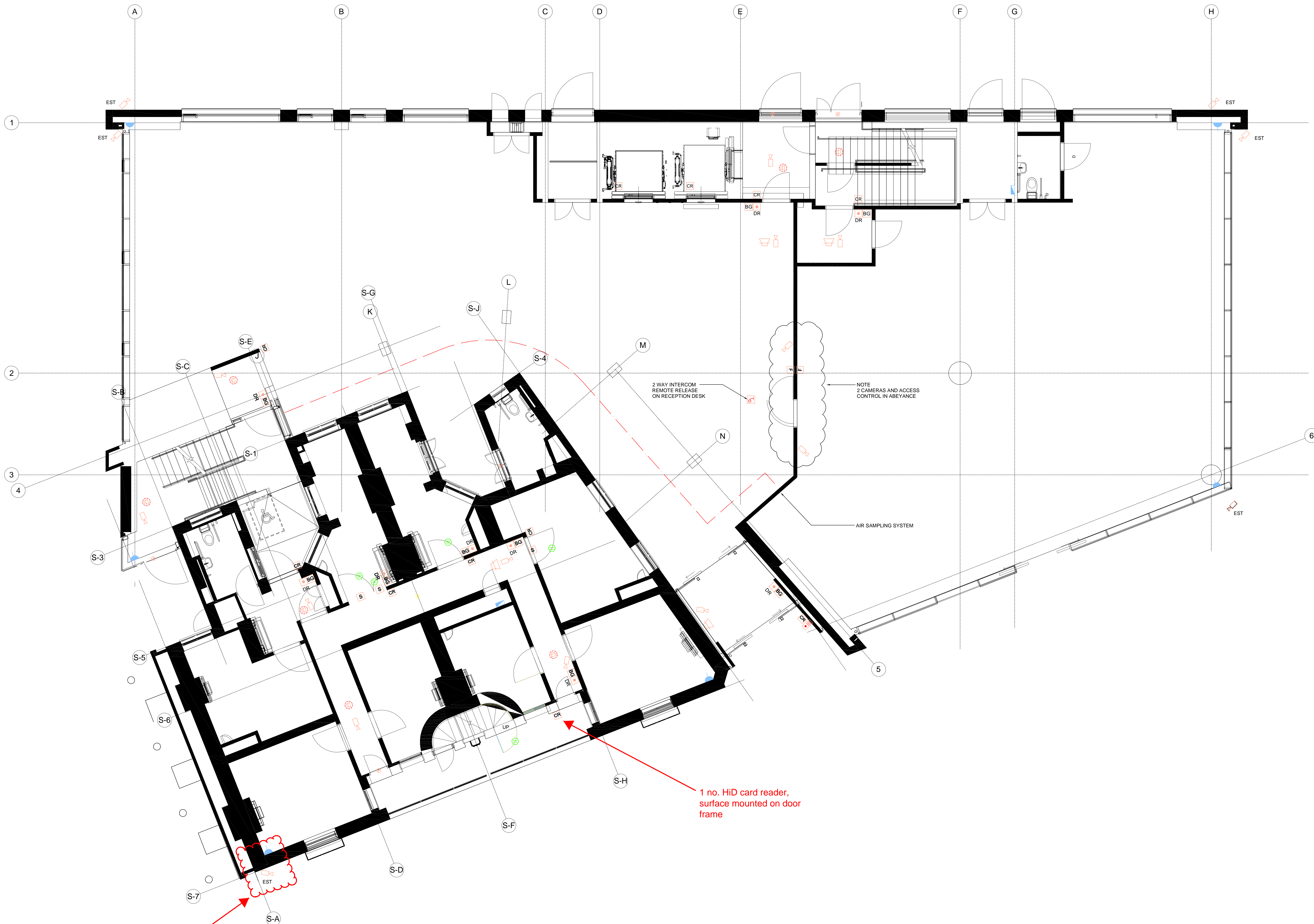


LEGEND:

- DR DOOR RELEASE BUTTON
- BG CARD SYSTEM EMERGENCY BREAKGLASS UNIT
- INTERCOM CALL POINT FOR DOOR ENTRY
- CR CARD ACCESS READER
- CCTV FIXED TYPE CAMERA
- VOICE ALARM WALL/SURFACE MOUNTED SPEAKER
- VOICE ALARM CEILING MOUNTED SPEAKER
- MAGLOCK
- FUSED SPUR
- CPU ACCESS CONTROL PANEL UNIT
- FIRE ALARM RELAY
- S ELECTRO-MECHANICAL SOLENOID LOCK



2 WAY INTERCOM REMOTE RELEASE ON RECEPTION DESK

NOTE 2 CAMERAS AND ACCESS CONTROL IN ABEYANCE

AIR SAMPLING SYSTEM

1 no. HiD card reader, surface mounted on door frame

1 no. Pelco Bullet Camera and integral bracket, surface mounted on brickwork.

REV	DESCRIPTION	DATE	CHK	APP
AP0	APPROVAL	04.03.14		



Warnford Court, 29 Throgmorton Street, London EC2N  
 t: 0845 434 7818 m: 07325 66 1966 e: jason@opem-ltd.co.uk



Client  
 Project  
 STANLEY SOUTH BUILDING BUILDING E1

Title  
 GROUND FLOOR COMBINED SECURITY LAYOUT

Drawn	Checked	Approved
CDets	J.P.	J.P.
Scale	1:50 @ A0	Drw. No. 4142/BAMSE/7952
Date	16.02.14	Rev. APO

FOR APPROVAL