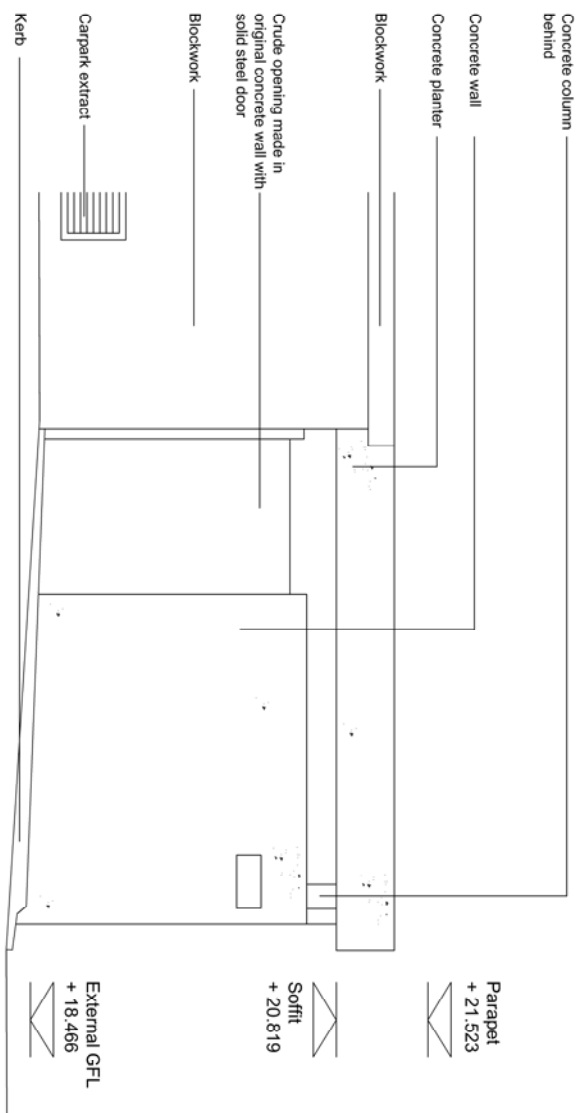
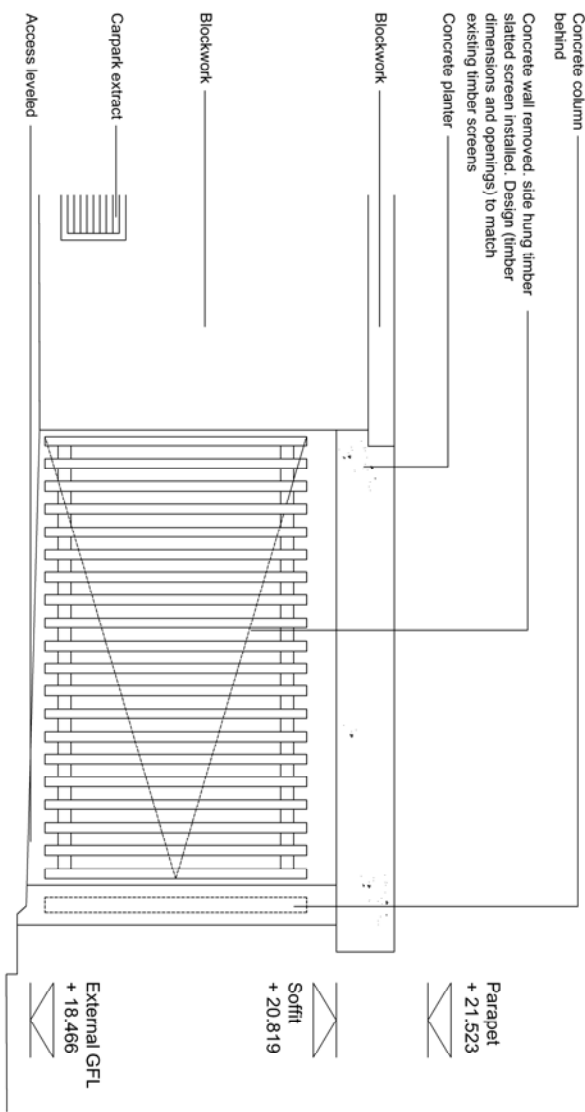


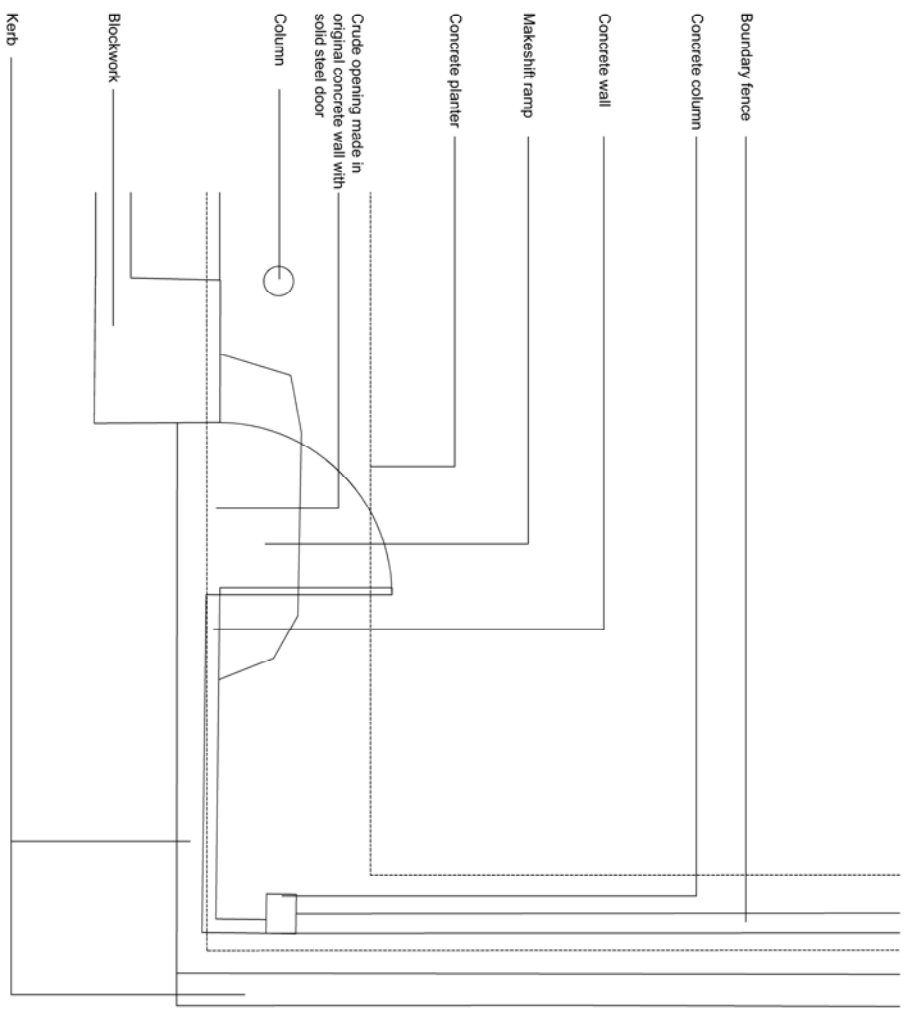
Rev.	Date	By	Desc.	Appr.	Description



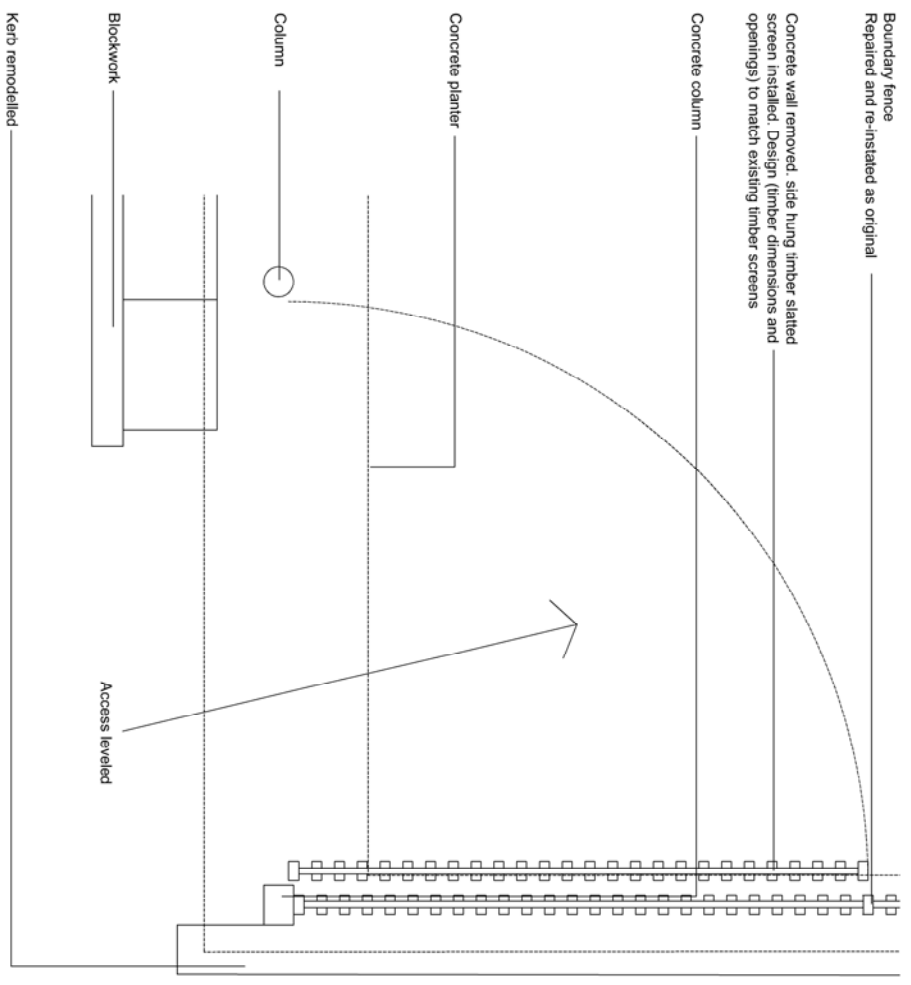
Existing South East Boundary access - Elevation



Proposed South East Boundary access - Elevation



Existing South East Boundary access - Plan



Proposed South East Boundary access - Plan



Inverstick LLP
 5th Floor, 100 Old Broad Street
 London EC2M 1JN
 Tel: +44 (0)20 7267 7076
 Fax: +44 (0)20 7267 7000
 www.inverstick.com

Client:
 London Borough of Camden

Job Title:
 Camden WKC FE College

Drawing Title:
 Proposed boundary alteration

Job/Dwg No./Rev.	1036	1106	-
Drawn:	DG	APPR:	DG
Checked:	DG	Date:	16.05.2014
Drawing status: PLANNING			
Do not scale from this drawing. Check all dimensions on site before tendering.			
Scale: 1:200 @ A1			