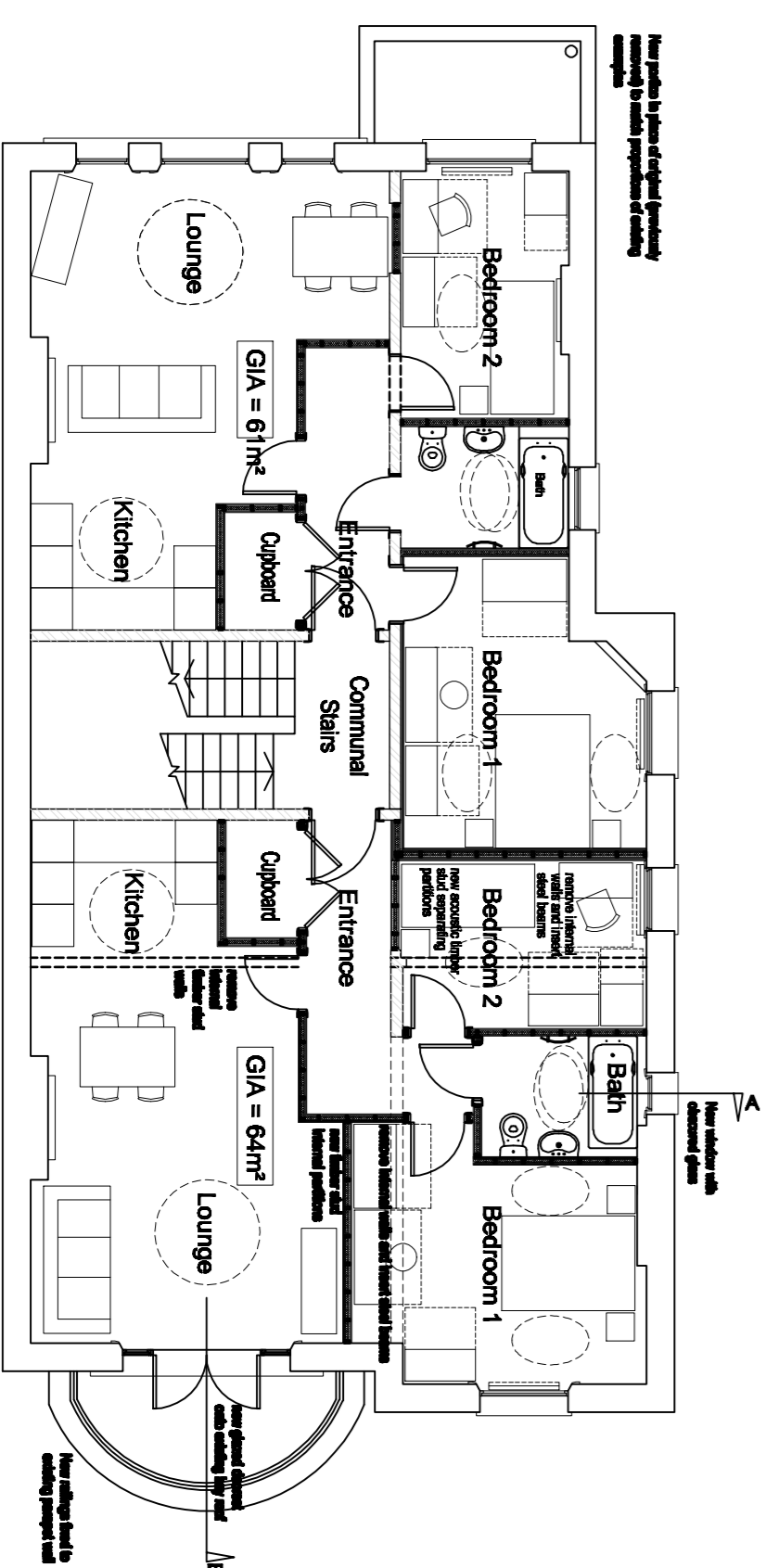
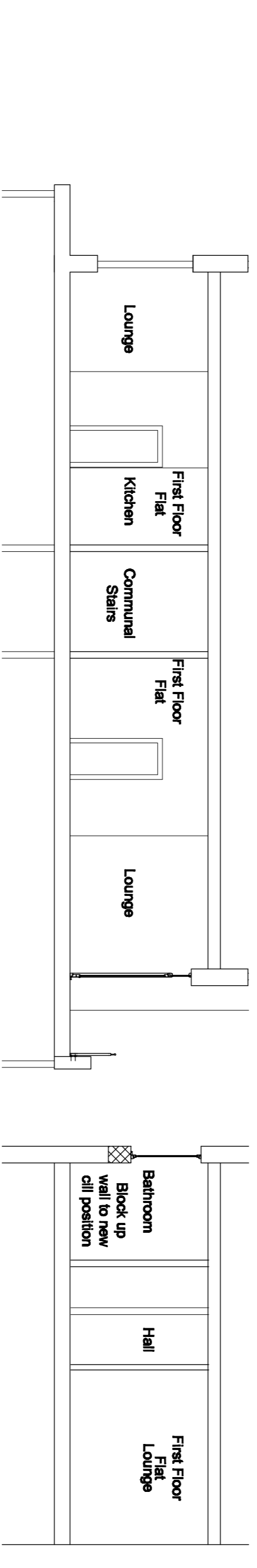
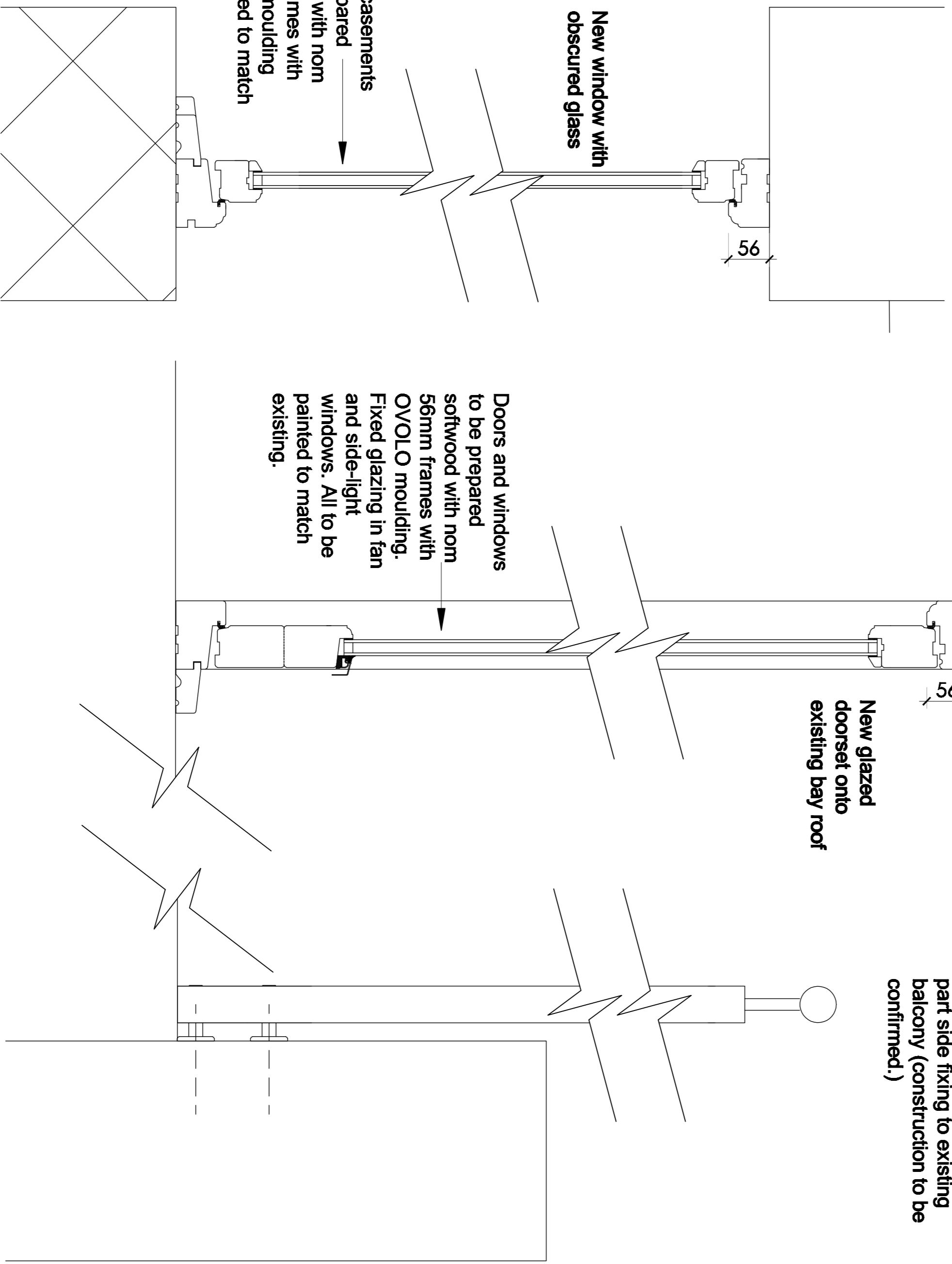
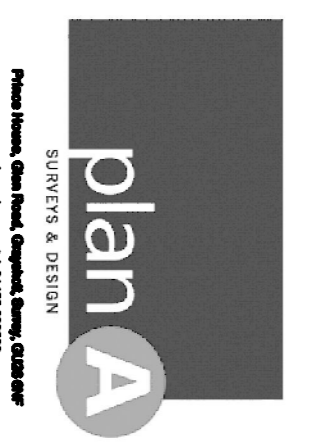


New glass balustrade by 'Sapphire Balustrade' or similar. 50mm Ø baluster in satin polished stainless steel grade 304 finish filled with 10mm toughened glass. Two part side fixing to existing balcony (construction to be confirmed.)



Rev.	Description	Drawn	Check	Date
A	Layout Revised	NW	6th	
Revisions				



CLIENT  
Geni House Estates  
70A Belston Park Gardens  
London NW3

DRAWING TITLE  
Proposed Sections

DATE	March 2011	SCALE	1:50 & 1:10 @ A1
DRN.	NW	CHK.	CGW
DO NOT SCALE FROM THIS DRAWING ALL DIMENSIONS TO BE CHECKED ON SITE			
REV.	A		

11239103/04