

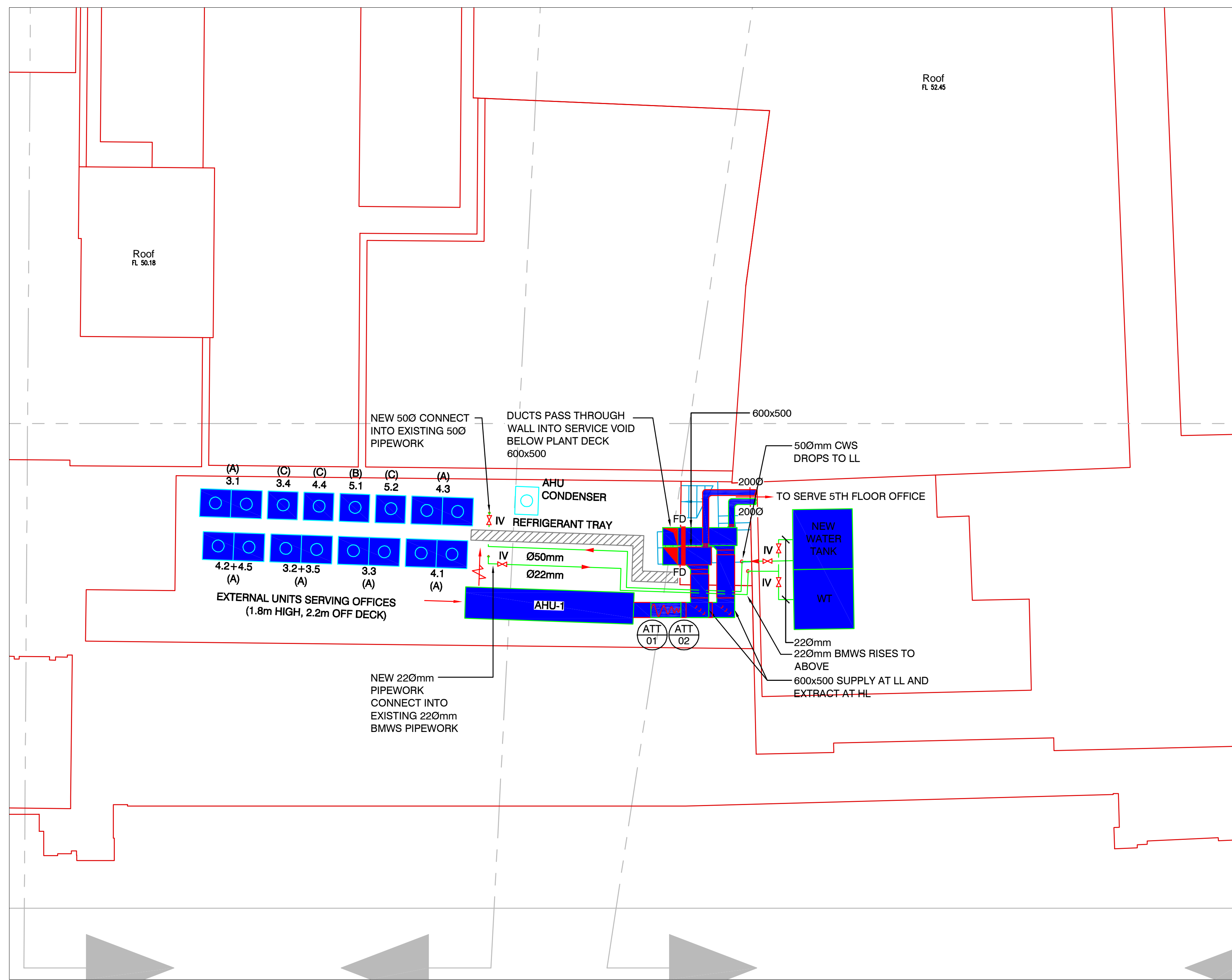
Based on:	Rev'
Architects Dwg No.:	Rev'
Structural Dwg No.:	Rev'
Survey Dwg No.:	Rev'
Other Dwg No.:	Rev'

DO NOT SCALE FROM THIS DRAWING

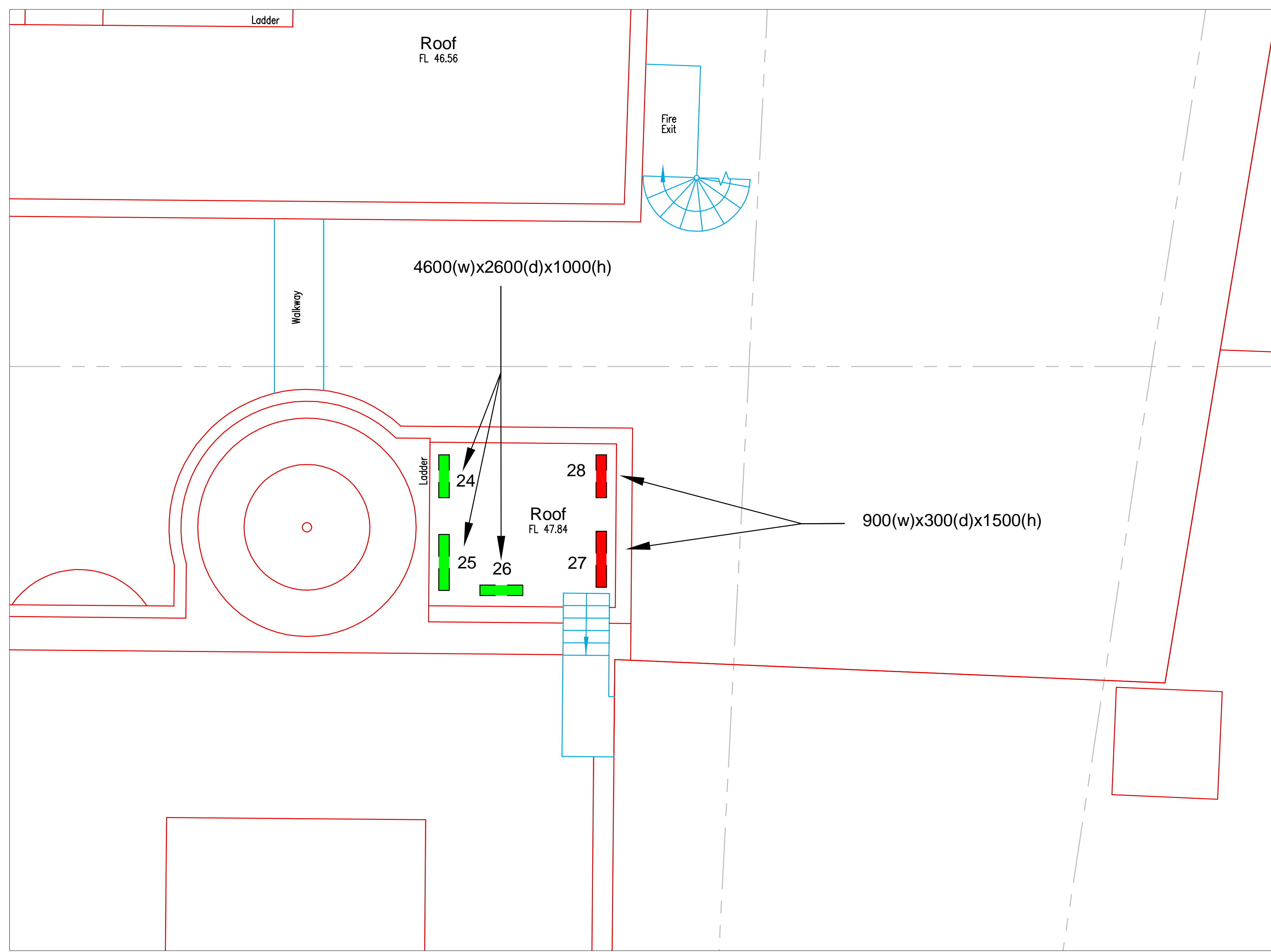
Notes

- PLANT EQUIPMENT TO BE RETAINED
- NEW PLANT PROPOSED
- FUTURE PLANT/EQUIPMENT (ALLOWANCE FOR TENANTS FIT-OUT)

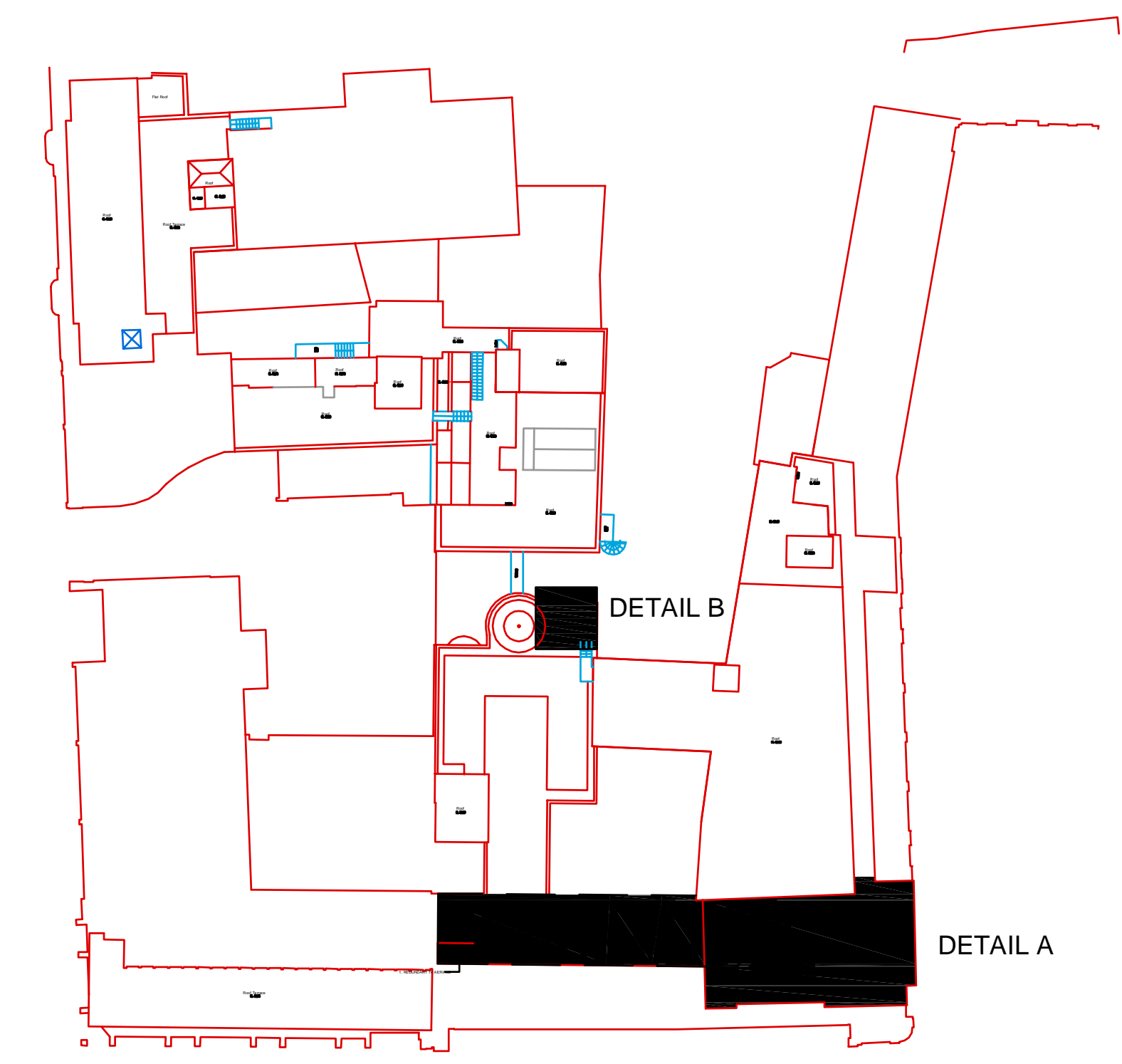
VRF CONDENSERS (HEIGHT INCLUDING STEEL FRAME BASE)
 FRAME BASE:
 A - 2158(H) x 2060(W) x 930(D)mm
 B - 2158(H) x 1000(W) x 930(D)mm
 C - 2158(H) x 770(W) x 930(D)mm
 AHU (HEIGHT INCLUDING STEEL FRAME BASE)
 AHU-1 - 5625(L) x 1050 (W) x 2120(H)
 WATER TANK (HEIGHT INCLUDING STEEL FRAME BASE)
 WT - 4000(L) x 2000(W) x 1250(H)



DETAIL A



DETAIL B



ROOF LEVEL KEY PLAN

B	27/06/14	ISSUED FOR INFORMATION	RG	RG	CO
A	23/04/14	ISSUED FOR INFORMATION	RG	RG	CO
-	15/04/14	ISSUED FOR INFORMATION	RG	RG	CO
Issue	Date	Description	By	Chkd	Verfd

Project
 Phase II - Alfred Mews

Client
 Threadneedle Pensions Ltd
 Architect
 JM ARCHITECTS

Title
 Proposed Roof Plant Layout

Drawing No. 1008804-SK-002	Drawing Status FOR INFORMATION		
Job No. 1008804	Scale NTS		
Originator AM	Checked RG	Verified RM	Issue. -

CUNDALL
 Consulting Engineers
 Saffron House
 6-10 Kirby Street
 London EC1N 8TS
 Telephone: +44 (0)20 7438 1600
 Website: www.cundall.com