

PROPOSED SITE PLAN

This drawing is prepared for the purposes of a planning application and to show design intent only. The information contained herein must not be used for costing, construction, engineering or any other purposes without agreement in writing from Waugh Thistleton Architects Ltd.

NOTES



A	amendment to layout of front landscaping	11/7/14	AT
REV	COMMENTS	DATE	CHK

STATUS

APPLICATION

Job 264-270 Finchley Road

Title Proposed Site plan

Date April 2014

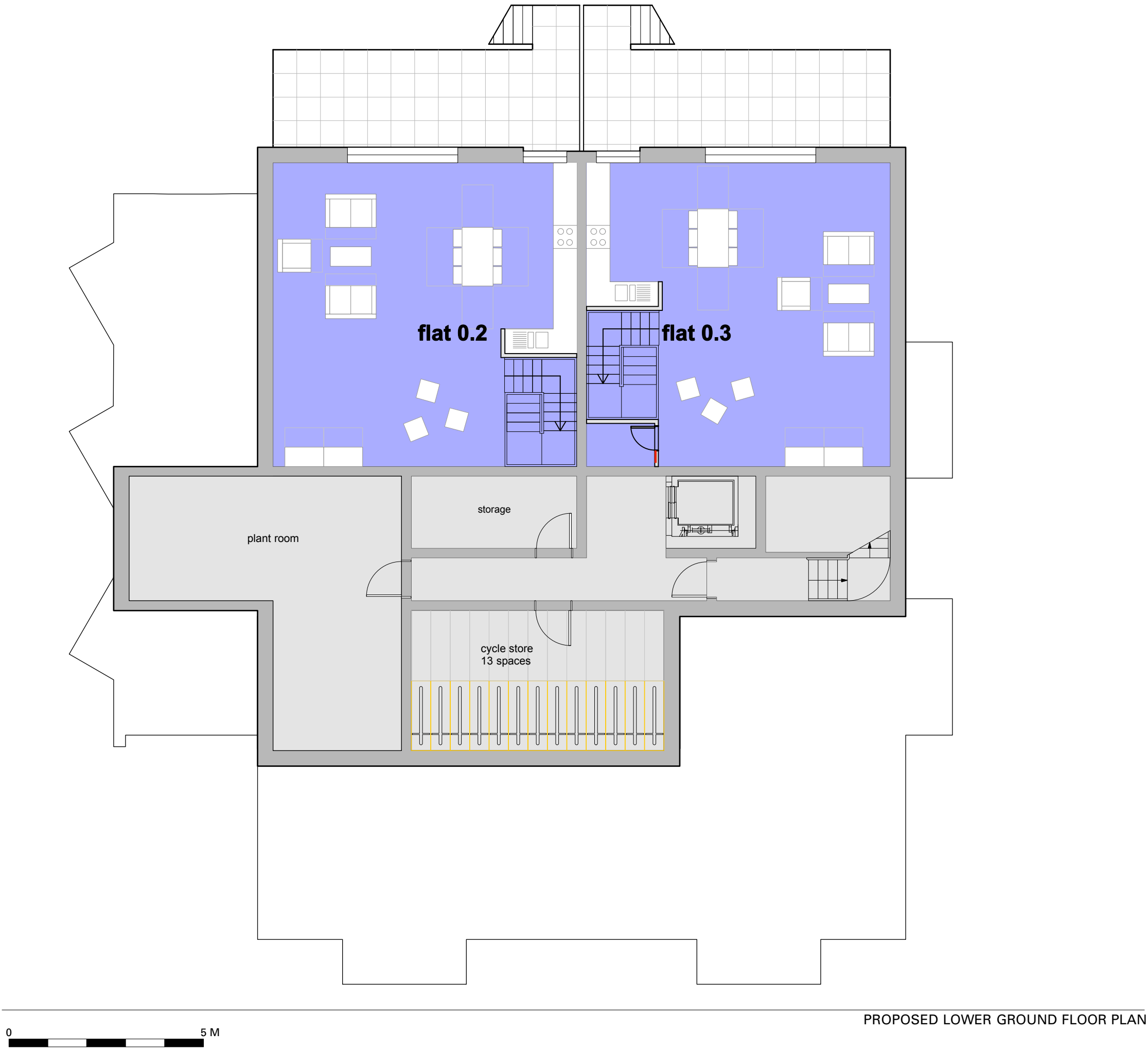
Scale 1:200 @ A3

Drawn AL

Waugh Thistleton
Architects Ltd
74 Paul Street
London EC2A 4NA
Telephone
+44 (0)20 7613 5727
Fax
+44 (0)20 7613 5749
email/web
waughthistleton.com

1-464-100 A

architects Waugh
Thistleton



This drawing is prepared for the purposes of a planning application and to show design intent only. The information contained herein must not be used for costing, construction, engineering or any other purposes without agreement in writing from Waugh Thistleton Architects Ltd.

NOTES

KEY

- one bedroom flat
- two bedroom flat
- three bedroom flat
- amenity space
- green roof



A	change to plant rooms	11/7/14	AT
	REV COMMENTS	DATE	CHK

STATUS

APPLICATION

Job	264-270 Finchley Road
Title	Proposed lower ground floor plan
Date	April 2014
Scale	1:100 @ A3
Drawn	AL

Waugh Thistleton
Architects Ltd
74 Paul Street
London EC2A 4NA
Telephone
+44 (0)20 7613 5727
Fax
+44 (0)20 7613 5749
email/web
waughthistleton.com

architects
Waugh
Thistleton

1-464-101 A

This drawing is prepared for the purposes of a planning application and to show design intent only. The information contained herein must not be used for costing, construction, engineering or any other purposes without agreement in writing from Waugh Thistleton Architects Ltd.

NOTES

KEY

- one bedroom flat
- two bedroom flat
- three bedroom flat
- amenity space
- green roof



A	bathroom of flat 0.4 amended for disabled	11/7/14	AT
	ACCESS		
REV	COMMENTS	DATE	CHK

STATUS

APPLICATION

Job 264-270 Finchley Road

Title Proposed ground floor plan

Date April 2014

Scale 1:100 @ A3

Drawn AL

Waugh Thistleton
Architects Ltd
74 Paul Street
London EC2A 4NA
Telephone
+44 (0)20 7613 5727
Fax
+44 (0)20 7613 5749
email/web
waughthistleton.com

1-464-102 A

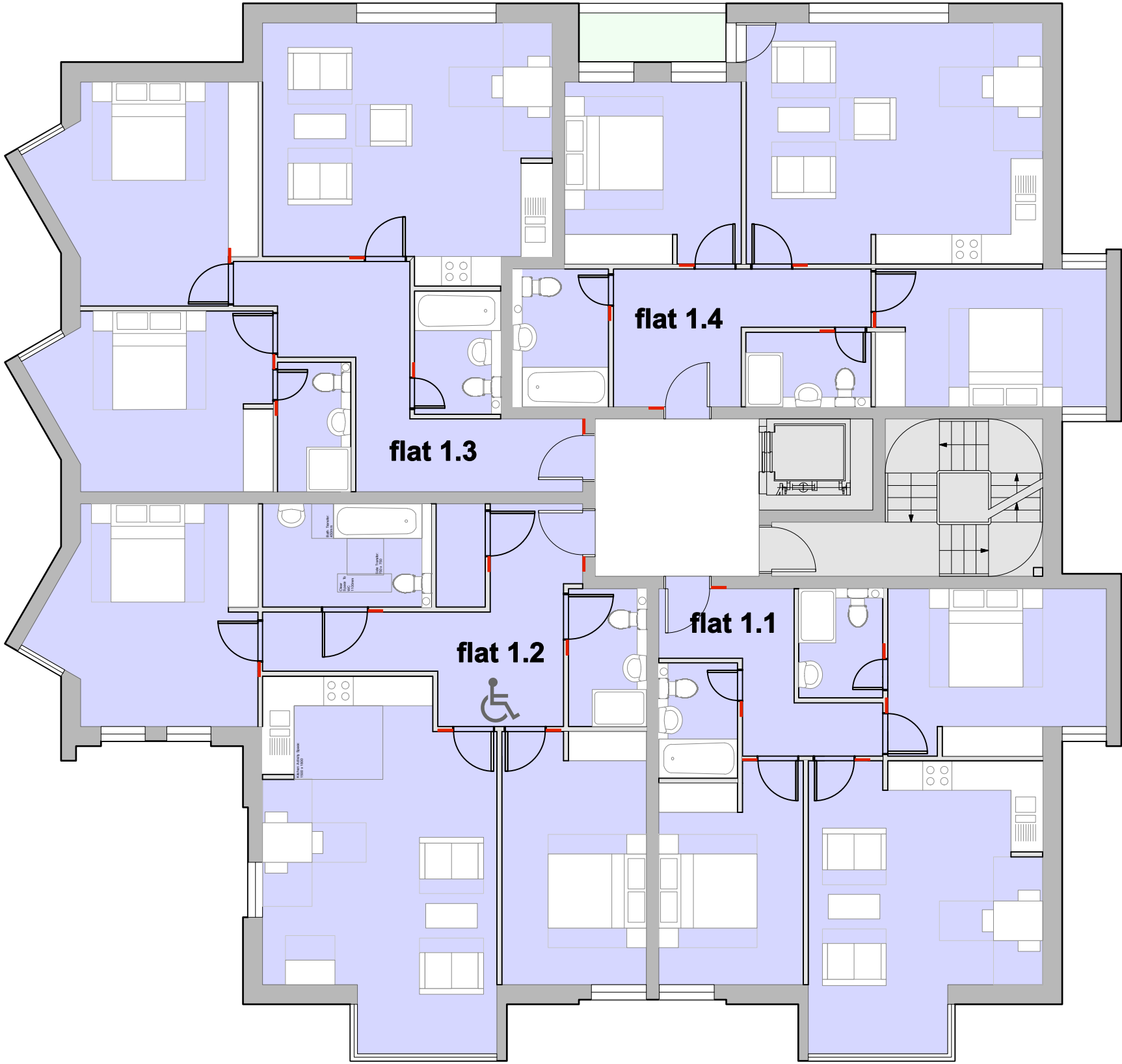
architects Waugh
Thistleton

This drawing is prepared for the purposes of a planning application and to show design intent only. The information contained herein must not be used for costing, construction, engineering or any other purposes without agreement in writing from Waugh Thistleton Architects Ltd.

NOTES

KEY

- one bedroom flat
- two bedroom flat
- three bedroom flat
- amenity space
- green roof



PROPOSED FIRST FLOOR PLAN



A	bathroom of flat 1.2 amended for disabled	11/7/14	AT
	access		
REV	COMMENTS	DATE	CHK

STATUS

APPLICATION

Job 264-270 Finchley Road

Title Proposed 1st floor plan

Date April 2014

Scale 1:100 @ A3

Drawn AL

Waugh Thistleton
Architects Ltd
74 Paul Street
London EC2A 4NA
Telephone
+44 (0)20 7613 5727
Fax
+44 (0)20 7613 5749
email/web
waughthistleton.com

1-464-103 A

architects
Waugh
Thistleton

This drawing is prepared for the purposes of a planning application and to show design intent only. The information contained herein must not be used for costing, construction, engineering or any other purposes without agreement in writing from Waugh Thistleton Architects Ltd.

NOTES

KEY

- one bedroom flat
- two bedroom flat
- three bedroom flat
- amenity space
- green roof



PROPOSED SECOND FLOOR PLAN



REV	COMMENTS	DATE	CHK
STATUS			

APPLICATION

Job 264-270 Finchley Road

Title Proposed 2nd floor plan

Date April 2014

Scale 1:100 @ A3

Drawn AL

Waugh Thistleton
Architects Ltd
74 Paul Street
London EC2A 4NA
Telephone
+44 (0)20 7613 5727
Fax
+44 (0)20 7613 5749
email/web
waughthistleton.com

1-464-104

architects
Waugh
Thistleton

NOTES

KEY

- one bedroom flat
- two bedroom flat
- three bedroom flat
- amenity space
- green roof



0 5 M

PROPOSED THIRD FLOOR PLAN



REV	COMMENTS	DATE	CHK
STATUS			

APPLICATION

Job 264-270 Finchley Road

Title Proposed 3rd floor plan

Date April 2014

Scale 1:100 @ A3

Drawn AL

Waugh Thistleton
Architects Ltd
74 Paul Street
London EC2A 4NA
Telephone
+44 (0)20 7613 5727
Fax
+44 (0)20 7613 5749
email/web
waughthistleton.com

1-464-105

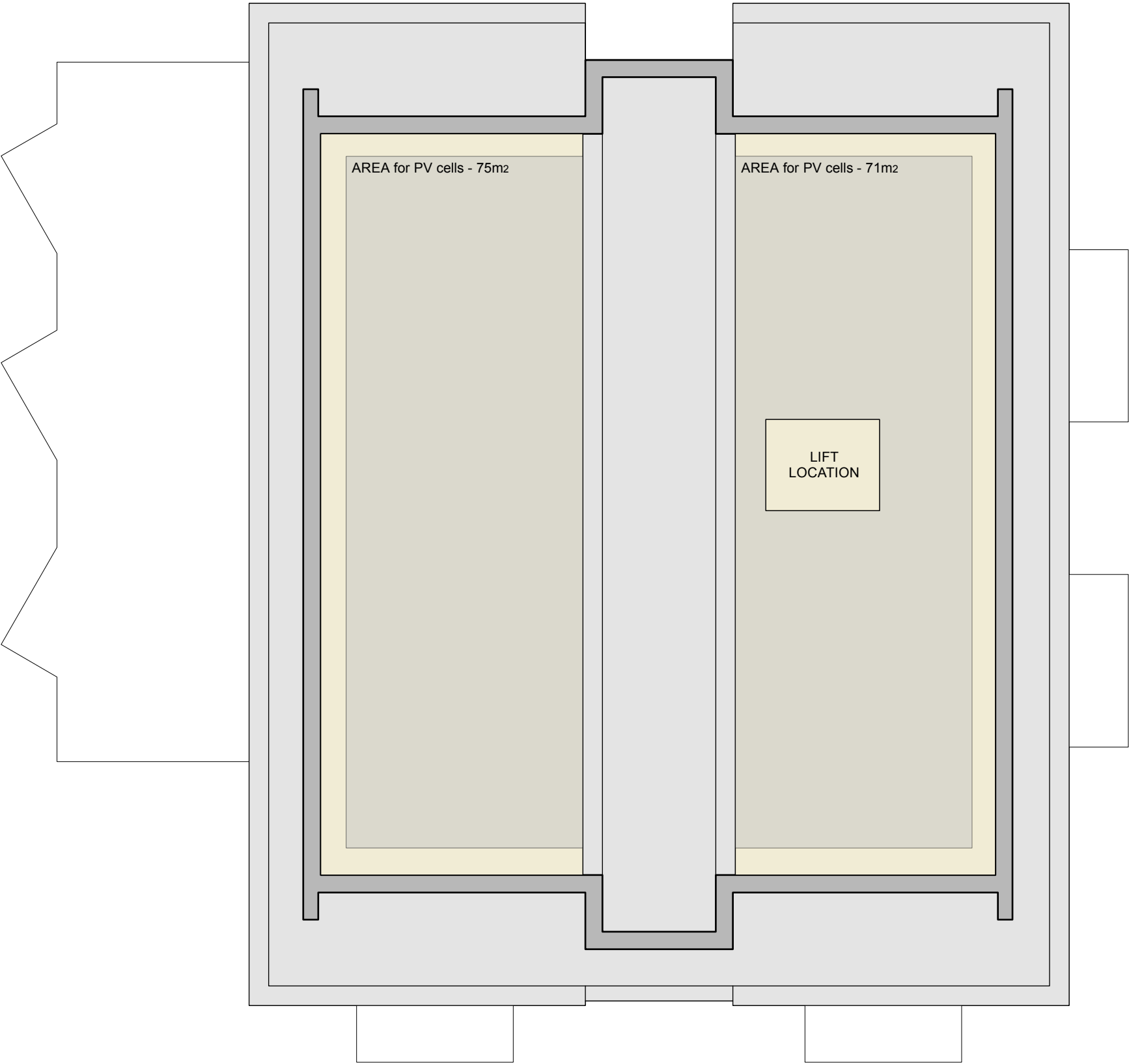
architects
Waugh
Thistleton

This drawing is prepared for the purposes of a planning application and to show design intent only. The information contained herein must not be used for costing, construction, engineering or any other purposes without agreement in writing from Waugh Thistleton Architects Ltd.

NOTES

KEY

- one bedroom flat
- two bedroom flat
- three bedroom flat
- amenity space
- green roof



0 5 M

PROPOSED ROOF PLAN



REV	COMMENTS	11/7/14	AT
		DATE	CHK

STATUS

APPLICATION

Job 264-270 Finchley Road

Title Proposed roof plan

Date April 2014

Scale 1:100 @ A3

Drawn AL

Waugh Thistleton
Architects Ltd
74 Paul Street
London EC2A 4NA
Telephone
+44 (0)20 7613 5727
Fax
+44 (0)20 7613 5749
email/web
waughthistleton.com

architects
Waugh
Thistleton

1-464-106 A



PROPOSED FRONT ELEVATION



PROPOSED REAR ELEVATION



A	rear planting and notes added	11/7/14	AT
REV	ground floor window bays enlarged	DATE	CHK
COMMENTS			

STATUS

APPLICATION

Job	264-270 Finchley Road
Title	Front and Rear elevations
Date	April 2014
Scale	1:200 @ A3
Drawn	AL

Waugh Thistleton
Architects Ltd
74 Paul Street
London EC2A 4NA
Telephone
+44 (0)20 7613 5727
Fax
+44 (0)20 7613 5749
email/web
waughthistleton.com

architects **Waugh Thistleton**
1-464-200 A

This drawing is prepared for the purposes of a planning application and to show design intent only. The information contained herein must not be used for costing, construction, engineering or any other purposes without agreement in writing from Waugh Thistleton Architects Ltd.

NOTES



0 5 M

PROPOSED FRONT ELEVATION

A	ground floor window bays enlarged	11/7/14	AT
	REV COMMENTS	DATE	CHK

STATUS

APPLICATION

Job 264-270 Finchley Road

Title Proposed front elevation

Date April 2014

Scale 1:100 @ A3

Drawn AL

Waugh Thistleton
Architects Ltd
74 Paul Street
London EC2A 4NA
Telephone
+44 (0)20 7613 5727
Fax
+44 (0)20 7613 5749
email/web
waughthistleton.com

architects
Waugh
Thistleton

1-464-201 A



0 5 M

PROPOSED REAR ELEVATION

REV	COMMENTS	DATE	CHK
STATUS			

APPLICATION

Job	264-270 Finchley Road
Title	Proposed rear elevation
Date	April 2014
Scale	1:100 @ A3
Drawn	AL

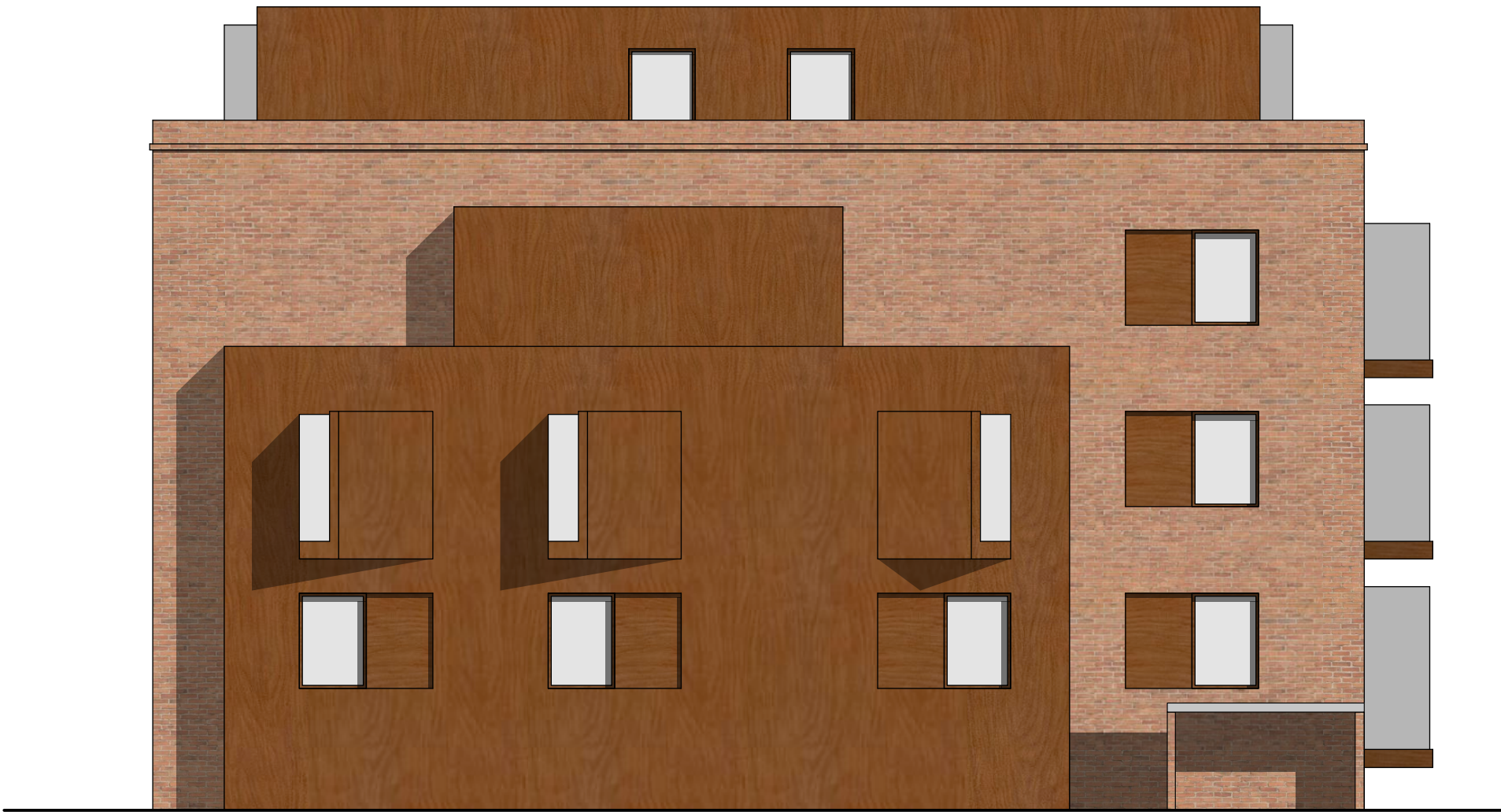
1-464-202

Waugh Thistleton
Architects Ltd
74 Paul Street
London EC2A 4NA
Telephone
+44 (0)20 7613 5727
Fax
+44 (0)20 7613 5749
email/web
waughthistleton.com

architects **Waugh
Thistleton**

This drawing is prepared for the purposes of a planning application and to show design intent only. The information contained herein must not be used for costing, construction, engineering or any other purposes without agreement in writing from Waugh Thistleton Architects Ltd.

NOTES



0 5 M

PROPOSED WEST ELEVATION

A	ground floor window bays enlarged	11/7/14	AT
	REV COMMENTS	DATE	CHK

STATUS

APPLICATION

Job 264-270 Finchley Road

Title Proposed west elevation

Date April 2014

Scale 1:100 @ A3

Drawn AL

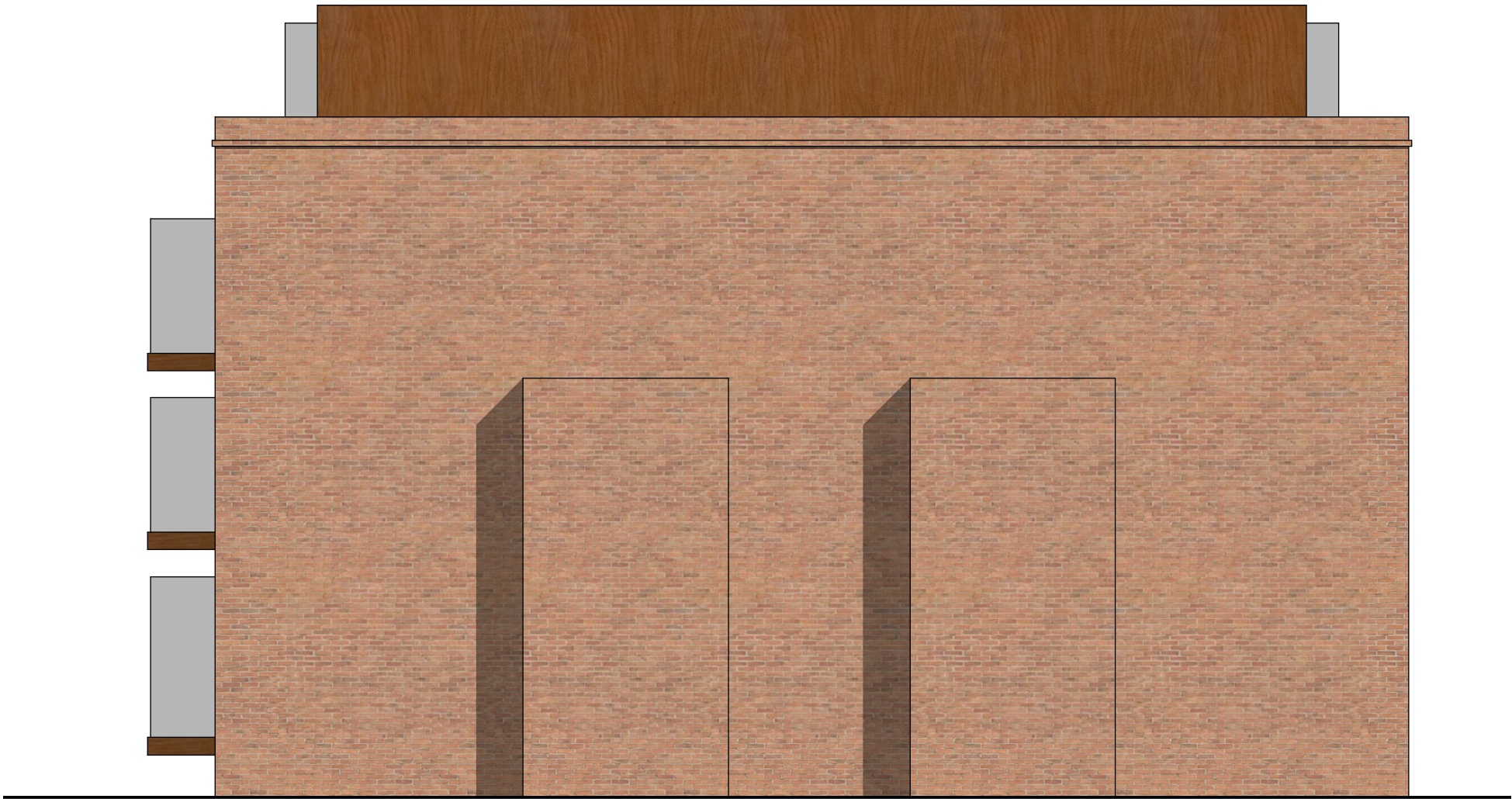
Waugh Thistleton
Architects Ltd
74 Paul Street
London EC2A 4NA
Telephone
+44 (0)20 7613 5727
Fax
+44 (0)20 7613 5749
email/web
waughthistleton.com

architects
Waugh
Thistleton

1-464-203 A

This drawing is prepared for the purposes of a planning application and to show design intent only. The information contained herein must not be used for costing, construction, engineering or any other purposes without agreement in writing from Waugh Thistleton Architects Ltd.

NOTES



0 5 M

PROPOSED EAST ELEVATION

A	ground floor window bays enlarged	11/7/14	AT
REV	COMMENTS	DATE	CHK

STATUS

APPLICATION

Job 264-270 Finchley Road

Title Proposed east elevation

Date April 2014

Scale 1:100 @ A3

Drawn AL

Waugh Thistleton
Architects Ltd
74 Paul Street
London EC2A 4NA

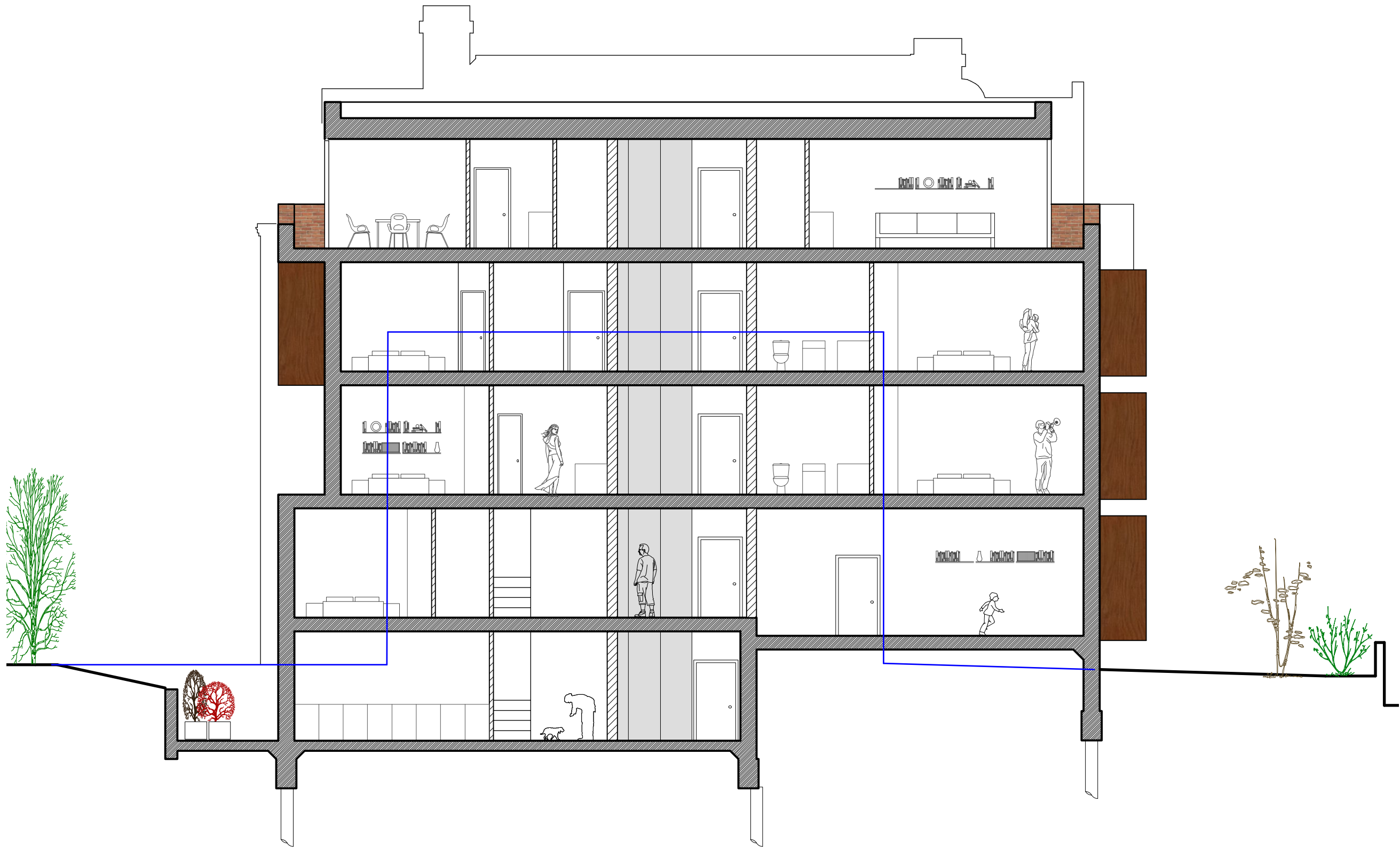
Telephone
+44 (0)20 7613 5727

Fax
+44 (0)20 7613 5749

email/web
waughthistleton.com

architects
Waugh
Thistleton

1-464-204 A



0 5 M

PROPOSED SECTION A-A

REV	COMMENTS	DATE	CHK
STATUS			

APPLICATION

Job 264-270 Finchley Road

Title Proposed section A-A

Date April 2014

Scale 1:100 @ A3

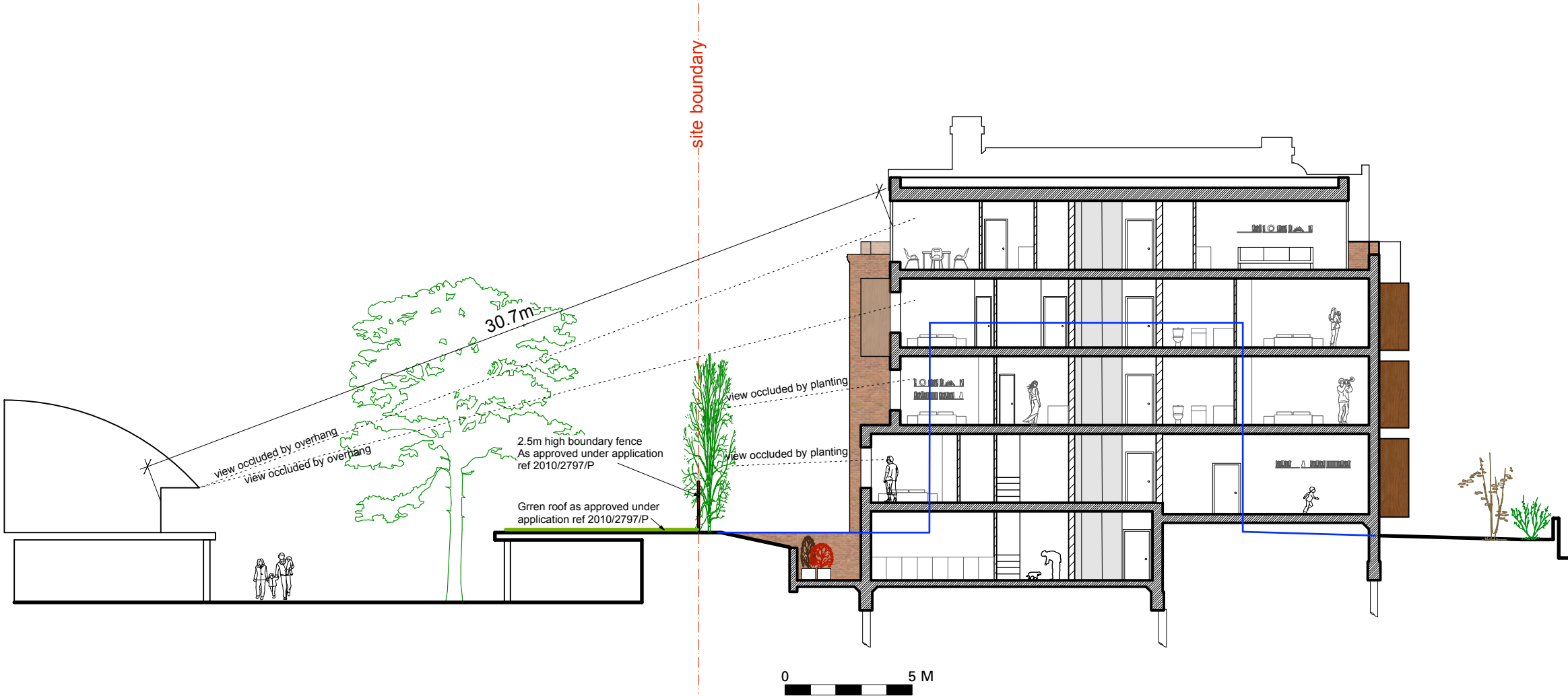
Drawn AL

Waugh Thistleton
Architects Ltd
74 Paul Street
London EC2A 4NA
Telephone
+44 (0)20 7613 5727
Fax
+44 (0)20 7613 5749
email/web
waughthistleton.com

architects **Waugh Thistleton** 1-464-300

KEY

- proposed scheme
- existing building
- refused scheme



REV	COMMENTS	DATE	CHK
-----	----------	------	-----

STATUS

APPLICATION

Job 264-270 Finchley Road

Title Proposed cross section showing overlooking mitigation measures

Date July 2014

Scale 1:200 @ A3

Drawn AL

Waugh Thistleton
Architects Ltd
74 Paul Street
London EC2A 4NA
Telephone
+44 (0)20 7613 5727
Fax
+44 (0)20 7613 5749
email/web
waughthistleton.com

1-464-305

architects Waugh
Thistleton