

**To support the OS 1:500 plans submitted separately**

**PRIMROSE HILL LOCATIONS 1 & 2**

- **FIGURE 1: REF: GEN MAP LOCATIONS 1 & 2**

This shows the two locations, preferred location 1 and alternative location 2

- **FIGURE 2: REF: GEN MAP LOCATION 1**

To position the Paddington Statue on the top of the Primrose Hill public viewing area.

- **FIGURE 3: REF: GEN MAP ALTERNATIVE LOCATION 2**

To position the Paddington Statue at the bottom of the hill, within the parks area but close to the junction of Regents Park Road and Albert Terrace.

- **FIGURE 4: REF: PHOTOGRAPHIC VIEW LOCATION 1**

- **FIGURE 5: REF: PHOTOGRAPHIC VIEW ALTERNATIVE LOCATION 2**

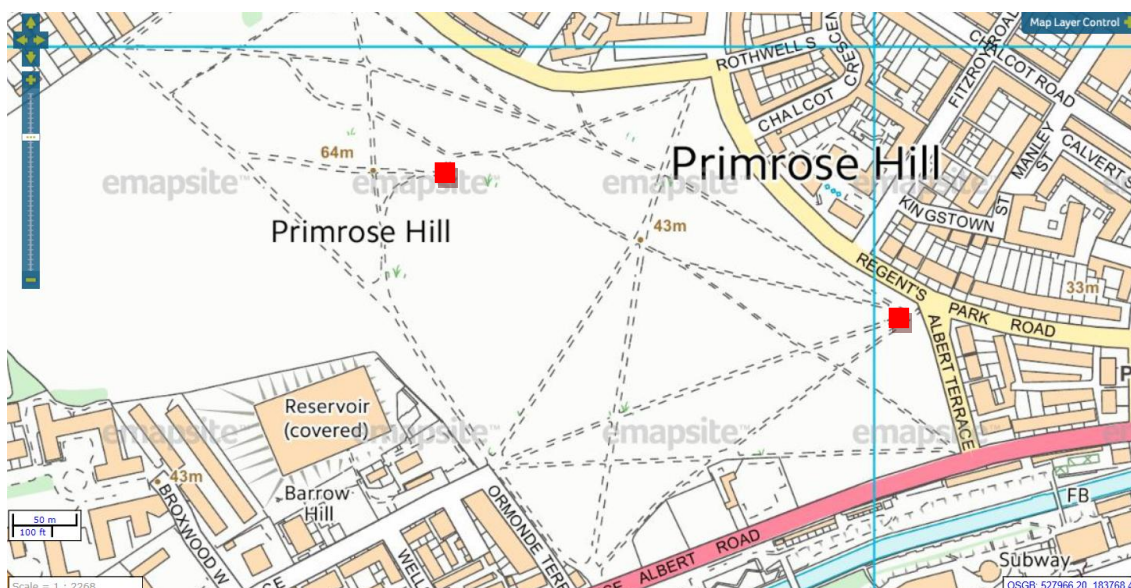
**Please note:**

These plans shows a marker to indicate the locations in general – this marker is not to scale.

Please note that the OS 1:500 plans show the size of the Statue to scale – submitted separately

The statue is 1540mm high on a square plinth base that is 810mm x 810mm square.

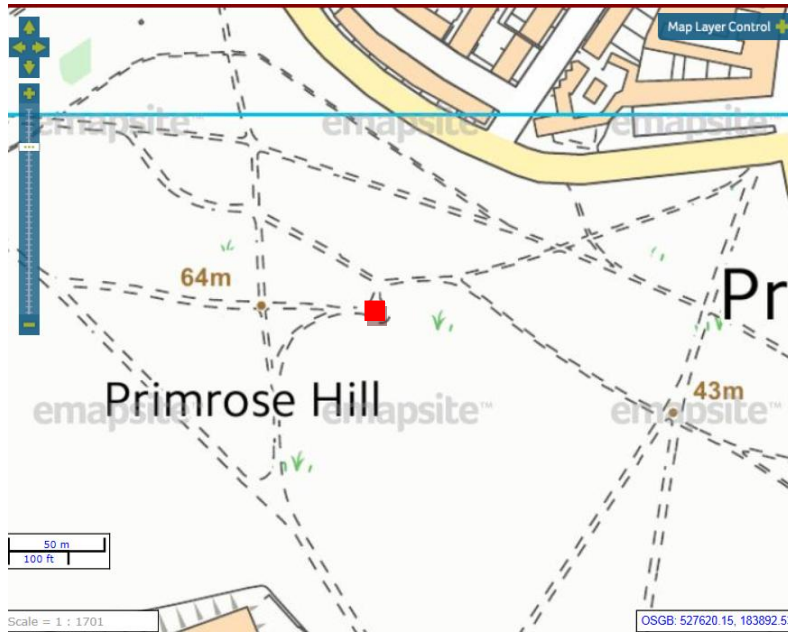
**Figure 1: Overview of both Location 1 and Location 2**



**THE PADDINGTON TRAIL: CAMDEN COUNCIL - PLANNING APPLICATION  
SUPPORT DOCUMENTS – ADDITIONAL MAPS**

To support the OS 1:500 plans submitted separately

- **Figure 2: Close up of Location 1 – top of hill viewing area**



- **Figure 3: Close up of Location 2 – bottom SE corner of Primrose Hill close to Regents Park Rd/Albert Terrace junction**



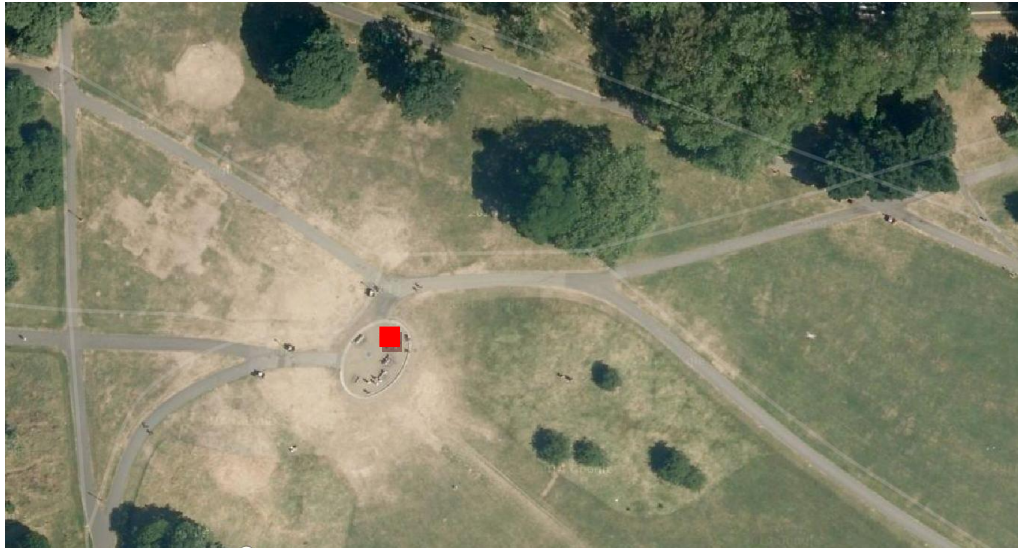
**Please note:**

This document shows a marker to indicate the locations in general – this marker is not to scale. Please note that the OS 1:500 plans show the size of the Statue to scale. The statue is 1540mm high on a square plinth base that is 810mm x 810mm square.

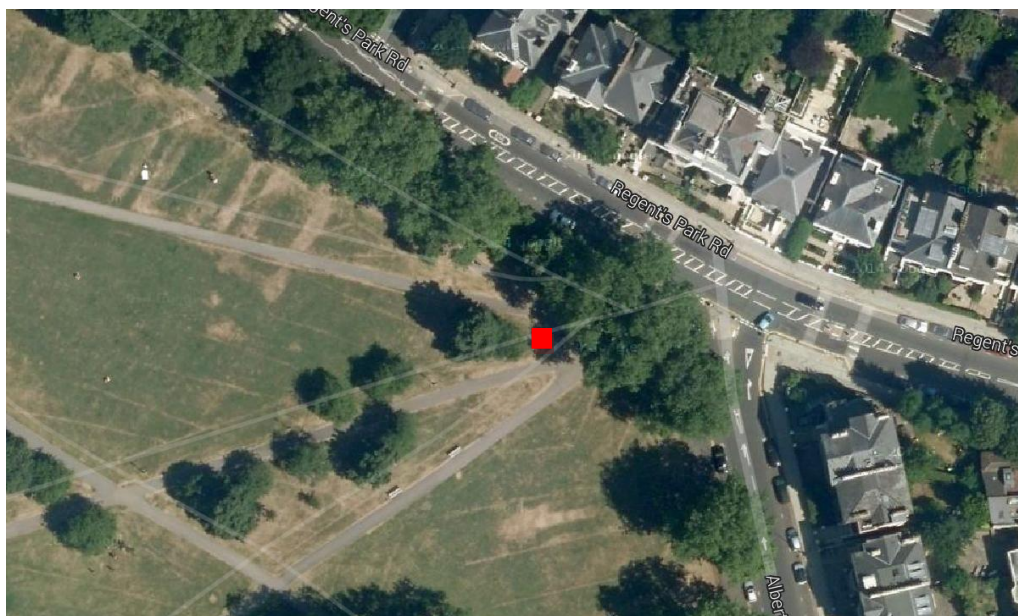
**THE PADDINGTON TRAIL: CAMDEN COUNCIL - PLANNING APPLICATION**  
**SUPPORT DOCUMENTS – ADDITIONAL MAPS**

**To support the OS 1:500 plans submitted separately**

**Figure 4: Photographic View of Location 1 – top of hill viewing area**



**Figure 5: Photographic View of Location 2 – SE bottom corner of hill**



**Please note:**

This document shows a marker to indicate the locations in general – this marker is not to scale. Please note that the OS 1:500 plans show the size of the Statue to scale. The statue is 1540mm high on a square plinth base that is 810mm x 810mm square.