

## **465-467 FINCHLEY ROAD, LONDON**

### **NOISE IMPACT ASSESSMENT**

Report 9812.NIA.01

Prepared on 28 February 2013

**For:**

**Mr Aryn Govani**  
**Suite 152**  
**Rye House**  
**113 High Street**  
**Ruislip**  
**Middlesex**  
**HA4 8JN**

## Contents

1.0	INTRODUCTION .....	3
2.0	ENVIRONMENTAL NOISE SURVEY .....	3
2.1	Procedure.....	3
2.2	Equipment.....	3
3.0	RESULTS.....	3
3.1	Noise Survey.....	3
4.0	DISCUSSION.....	4
5.0	NOISE IMPACT ASSESSMENT .....	5
5.1	Noise Assessment .....	5
6.0	EXTERNAL BUILDING FABRIC SPECIFICATION .....	5
6.1	Non-Glazed Elements.....	5
6.2	Glazed Elements.....	6
7.0	CONCLUSION.....	6

### List of Attachments

9812.TH1	Environmental Noise Time History
9812.SP1	Indicative Site Plan
Appendix A	Glossary of Acoustics Terminology

## 1.0 INTRODUCTION

KP Acoustics has been commissioned by Mr Aryn Govani, Suite 152, Rye House, 113 High Street, Ruislip, Middlesex, HA4 8JN, to assess the suitability of the site 465-467 Finchley Road, London, for residential development in accordance with the provisions of the National Planning Policy Framework and the Noise Policy Statement for England (NPSE).

This report presents the results of the environmental survey undertaken in order to measure prevailing background noise levels and outlines any necessary mitigation measures.

## 2.0 ENVIRONMENTAL NOISE SURVEY

### 2.1 Procedure

A noise survey was undertaken at the proposed site as shown in Figure 9812.SP1. The choice of this position was based both on accessibility collecting data representative of the worst-case levels expected on the site due to all nearby sources.

Continuous automated monitoring was undertaken for the duration of the survey between 11:45 on 26<sup>th</sup> February and 11:35 on 27<sup>th</sup> February 2013.

Weather conditions were generally dry with light winds and therefore suitable for the measurement of environmental noise.

The measurement procedure generally complied with BS7445:1991 *"Description and measurement of environmental noise, Part 2- Acquisition of data pertinent to land use"*.

### 2.2 Equipment

The equipment calibration was verified before and after use and no abnormalities were observed.

The equipment used was as follows.

- 1 No. Svantek Type 957 Class 1 Sound Level Meter
- B&K Type 4231 Class 1 Calibrator

## 3.0 RESULTS

### 3.1 Noise Survey

The  $L_{Aeq: 5min}$ ,  $L_{Amax: 5min}$ ,  $L_{A10: 5min}$  and  $L_{A90: 5min}$  acoustic parameters were measured throughout the duration of the survey. Measured levels are shown as a time history in Figure 9812.TH1.

Average daytime and night time noise levels are shown in Table 4.1.

#### 4.0 DISCUSSION

The site is bounded by Finchley Road to the East, and existing residential properties to the North and West, with an additional road (West Hampstead Lane) to the South of these residences. At the time of the survey, the background noise climate was solely dominated by road traffic noise from Finchley Road and West Hampstead Lane.

Measured noise levels are representative of noise exposure levels expected to be experienced by the South and West façades of the proposed development. Additional manual measurements have been taken to establish noise levels expected on the East façade. These have been used to construct a predicted worst case scenario for the noise levels experienced on-site.

In the absence of technical guidance in the NPSE this report considers the Noise Exposure Categories (NEC) set out in PPG24 to assist Local Authorities in assessing the suitability of sites for residential development in terms of noise exposure. NECs range from A to D, where NEC A refers to the case where noise would not be an impeding factor in granting a planning application, whilst Category D refers to the case where development should normally be refused.

Based on the above document, the site falls within NEC C during both the daytime and night-time on the West Façade, and night time on the East Façade, as shown in Table 4.1. The site falls within NEC D during daytime on the East Façade.

	Level dB(A)	NEC Category
East Façade Elevation		
<b>Daytime</b> L <sub>Aeq,16hour</sub>	72	C
<b>Night-time</b> L <sub>Aeq,8hour</sub>	66	C
West Façade Elevation		
<b>Daytime</b> L <sub>Aeq,16hour</sub>	69	C
<b>Night-time</b> L <sub>Aeq,8hour</sub>	62	C

**Table 4.1 Site average noise levels and NEC categories for daytime and night time**

In the UK, a majority of sites located within central urban areas fall into NEC B and C. Provided adequate mitigation measures are put in place during the design and construction phase of a development, “Good” to “Reasonable” internal noise levels may still be achieved. Outline mitigation measures are described in Sections 5 and 6 of this report.

**5.0 NOISE IMPACT ASSESSMENT**

**5.1 Noise Assessment**

BS8233:1999 “*Sound insulation and noise reduction for buildings*” describes recommended good to reasonable internal noise levels for residential spaces. These levels are shown in Table 5.1.

Criterion	Typical Situations	Design range $L_{Aeq,T}$ dB	
		Good	Reasonable
Reasonable resting/sleeping conditions	Living Rooms	30	40
	Bedrooms	30	35

**Table 5.1 BS8233 recommended internal background noise levels**

The external building fabric would need to be carefully designed to achieve these recommended internal levels. It is understood that the non-glazed external building fabric elements of the proposed development would be comprised of blockwork. This would contribute towards a significant reduction of ambient noise levels in combination with a good quality double-glazed window configuration, as shown in Section 6.

**6.0 EXTERNAL BUILDING FABRIC SPECIFICATION**

Sound reduction performance calculations have been undertaken in order to specify the minimum performance required from glazed and non-glazed elements in order to achieve ‘Good’ to ‘Reasonable’ internal noise levels shown in Table 5.1, taking into account average and maximum noise levels monitored during the environmental noise survey.

Typical size bedrooms, with a high ratio of glazing to masonry have been used for all glazing calculations for the East elevation.

As a more robust assessment,  $L_{Amax}$  spectrum values of night-time peaks have also been considered and incorporated into the glazing calculation in order to cater for the interior limit of 45 dB  $L_{Amax}$  for individual events, as specified in BS8233:1999.

**6.1 Non-Glazed Elements**

All non-glazed elements of the building façade have been assumed to provide a sound reduction performance of at least the figures shown in Table 6.1 when tested in accordance with BS EN ISO, 140-3:1995.

Element	Octave band centre frequency SRI, dB					
	125	250	500	1k	2k	4k
Non glazed element SRI	41	43	48	50	55	55

**Table 6.1 Non-glazed elements assumed sound reduction performance**

## 6.2 Glazed Elements

Minimum octave band sound reduction index (SRI) values required for all glazed elements to be installed are shown in Table 6.2. The performance is specified for the whole window unit, including the frame and other design features such as the inclusion of trickle vents. Sole glass performance data would not demonstrate compliance with this specification.

Glazing performance calculations have been based both on average measured night-time noise levels as well as verified against the  $L_{Amax}$  spectrum of individual events in order to comply with a maximum internal noise level of 45dB(A) in bedrooms as recommended by BS8233. The combined most robust results of these calculations are shown in Table 6.2.

Glazing Type	Octave band centre frequency SRI, dB					
	125Hz	250Hz	500Hz	1kHz	2kHz	4kHz
East Façade Elevation	29	32	34	43	41	33
South/West Façade Elevation	24	27	29	40	36	28

**Table 6.2 Required glazing performance**

All major building elements should be tested in accordance with BS EN ISO 140-3:1995.

Independent testing at a UKAS accredited laboratory will be required in order to confirm the performance of the chosen system for an “actual” configuration.

No further mitigation measures would be required to achieve good internal noise levels.

## 7.0 CONCLUSION

An environmental noise survey has been undertaken at 465-467 Finchley Road, London. Measured noise levels allowed the classification of the site to be determined as being within NEC C during both daytime and night-time on the West Façade and night-time of the East Façade, and NEC D during daytime of the East Façade.

A robust glazing specification has been proposed which would provide internal noise levels for all residential environments of the development commensurate to “Good” in the design range of BS8233.

No further mitigation measures should be required in order to protect the proposed residential properties from external noise intrusion.

**Kyriakos Papanagiotou**

**Director**

**KP Acoustics Ltd.**

465-467 Finchley Road, London  
Environmental Noise Time History  
26th February to 27th February 2013

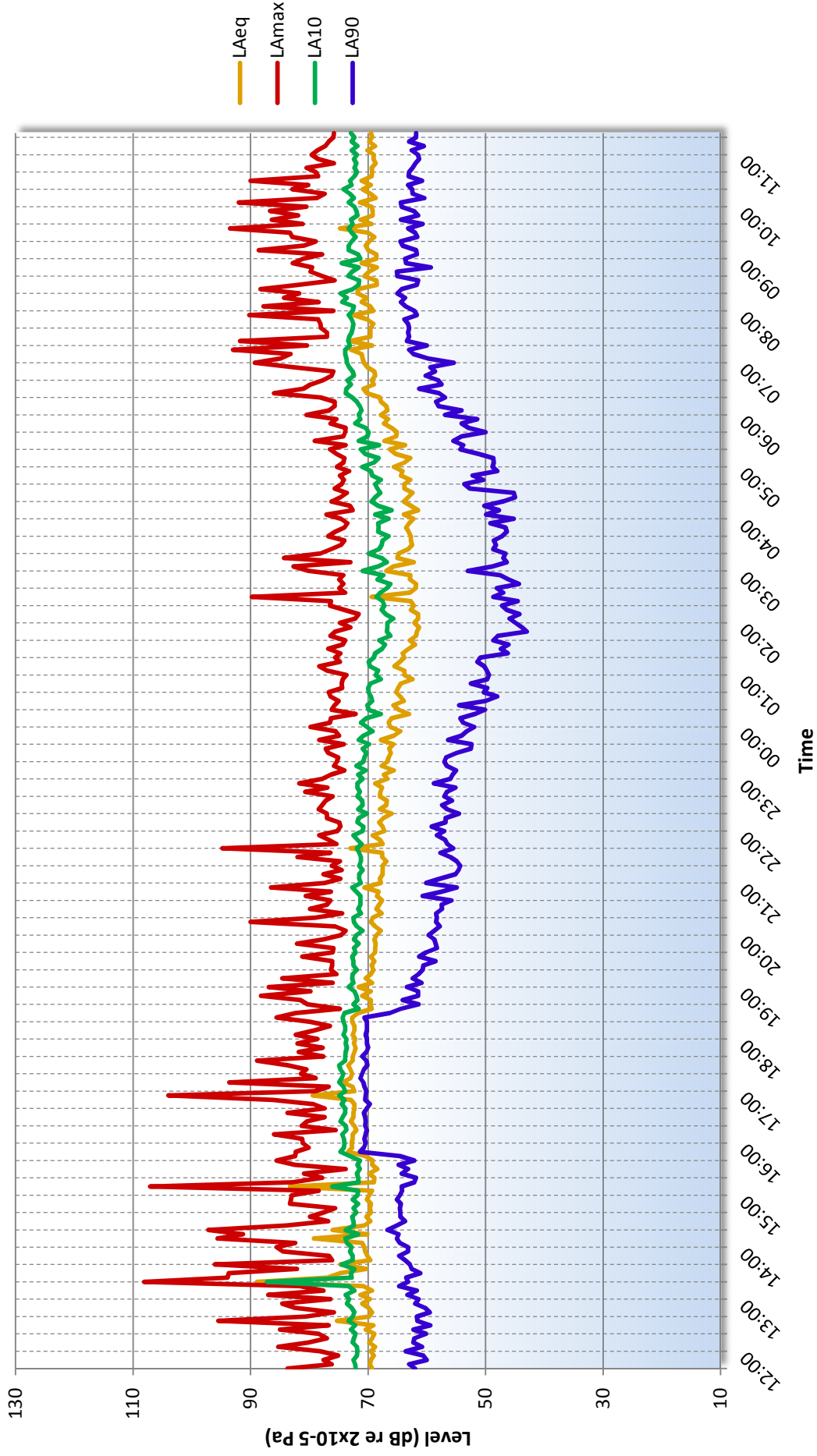
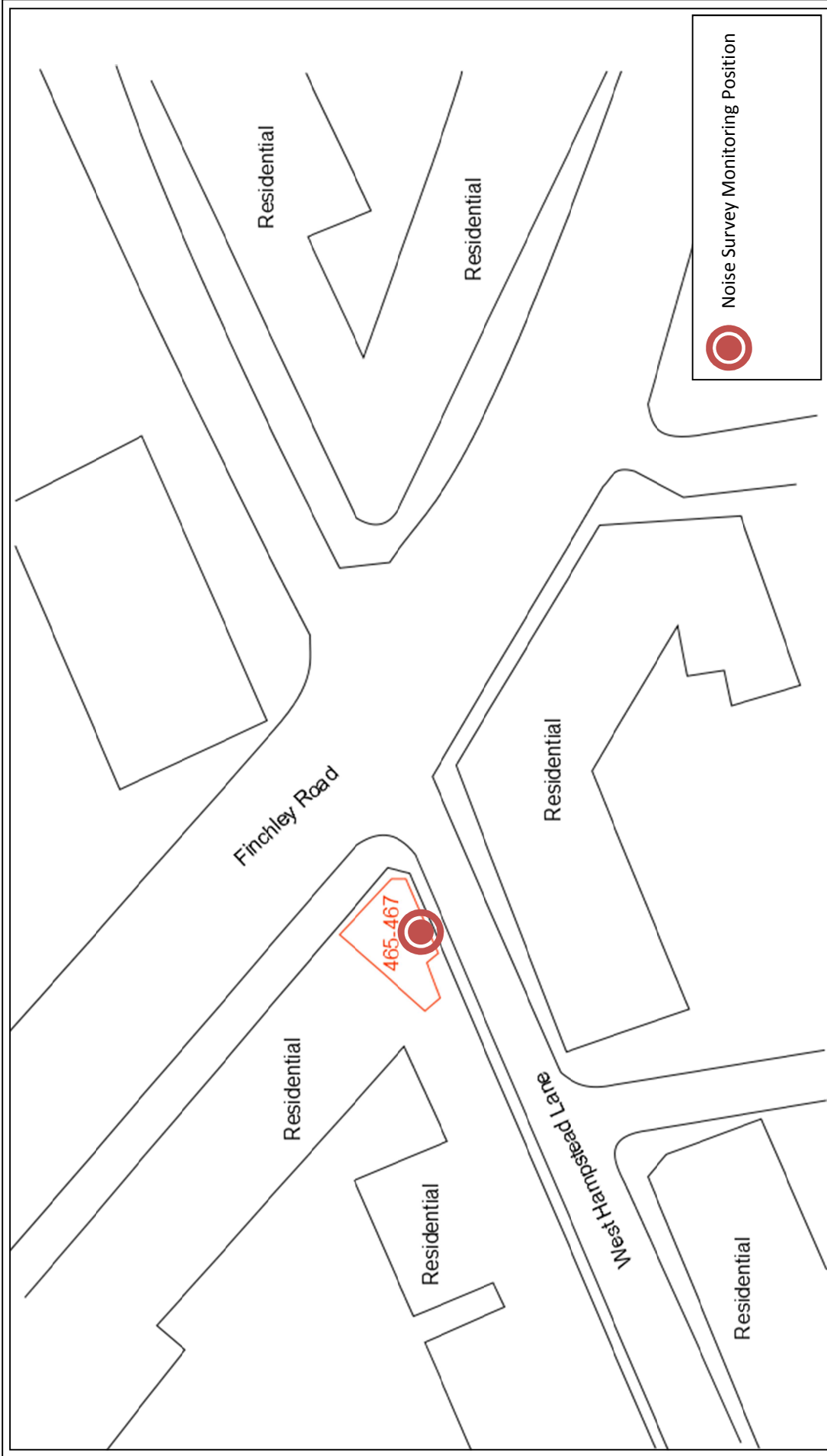


Figure 9812.TH1





**Date:** 28 February 2013

**FIGURE 9812.SP1**

**Title:**  
 Indicative site plan showing noise monitoring position

## GENERAL ACOUSTIC TERMINOLOGY

### Decibel scale - dB

In practice, when sound intensity or sound pressure is measured, a logarithmic scale is used in which the unit is the 'decibel', dB. This is derived from the human auditory system, where the dynamic range of human hearing is so large, in the order of  $10^{13}$  units, that only a logarithmic scale is the sensible solution for displaying such a range.

### Decibel scale, 'A' weighted - dB(A)

The human ear is less sensitive at frequency extremes, below 125Hz and above 16Khz. A sound level meter models the ears variable sensitivity to sound at different frequencies. This is achieved by building a filter into the Sound Level Meter with a similar frequency response to that of the ear, an A-weighted filter where the unit is dB(A).

### $L_{eq}$

The sound from noise sources often fluctuates widely during a given period of time. An average value can be measured, the equivalent sound pressure level  $L_{eq}$ . The  $L_{eq}$  is the equivalent sound level which would deliver the same sound energy as the actual fluctuating sound measured in the same time period.

### $L_{10}$

This is the level exceeded for no more than 10% of the time. This parameter is often used as a "not to exceed" criterion for noise.

### $L_{90}$

This is the level exceeded for no more than 90% of the time. This parameter is often used as a descriptor of "background noise" for environmental impact studies.

### $L_{max}$

This is the maximum sound pressure level that has been measured over a period.

### Octave Bands

In order to completely determine the composition of a sound it is necessary to determine the sound level at each frequency individually. Usually, values are stated in octave bands. The audible frequency region is divided into 11 such octave bands whose centre frequencies are defined in accordance with international standards. These centre frequencies are: 16, 31.5, 63, 125, 250, 500, 1000, 2000, 4000, 8000 and 16000 Hertz.

Environmental noise terms are defined in BS7445, *Description and Measurement of Environmental Noise*.

## APPLIED ACOUSTIC TERMINOLOGY

### Addition of noise from several sources

Noise from different sound sources combines to produce a sound level higher than that from any individual source. Two equally intense sound sources operating together produce a sound level which is 3dB higher than a single source and 4 sources produce a 6dB higher sound level.

### Attenuation by distance

Sound which propagates from a point source in free air attenuates by 6dB for each doubling of distance from the noise source. Sound energy from line sources (e.g. stream of cars) drops off by 3dB for each doubling of distance.

### Subjective impression of noise

Hearing perception is highly individualised. Sensitivity to noise also depends on frequency content, time of occurrence, duration of sound and psychological factors such as emotion and expectations. The following table is a guide to explain increases or decreases in sound levels for many scenarios.

Change in sound level (dB)	Change in perceived loudness
1	Imperceptible
3	Just barely perceptible
6	Clearly noticeable
10	About twice as loud

### Transmission path(s)

The transmission path is the path the sound takes from the source to the receiver. Where multiple paths exist in parallel, the reduction in each path should be calculated and summed at the receiving point. Outdoor barriers can block transmission paths, for example traffic noise. The effectiveness of barriers is dependent on factors such as its distance from the noise source and the receiver, its height and construction.

### Ground-borne vibration

In addition to airborne noise levels caused by transportation, construction, and industrial sources there is also the generation of ground-borne vibration to consider. This can lead to structure-borne noise, perceptible vibration, or in rare cases, building damage.

### Sound insulation - Absorption within porous materials

Upon encountering a porous material, sound energy is absorbed. Porous materials which are intended to absorb sound are known as absorbents, and usually absorb 50 to 90% of the energy and are frequency dependent. Some are designed to absorb low frequencies, some for high frequencies and more exotic designs being able to absorb very wide ranges of frequencies. The energy is converted into both mechanical movement and heat within the material; both the stiffness and mass of panels affect the sound insulation performance.