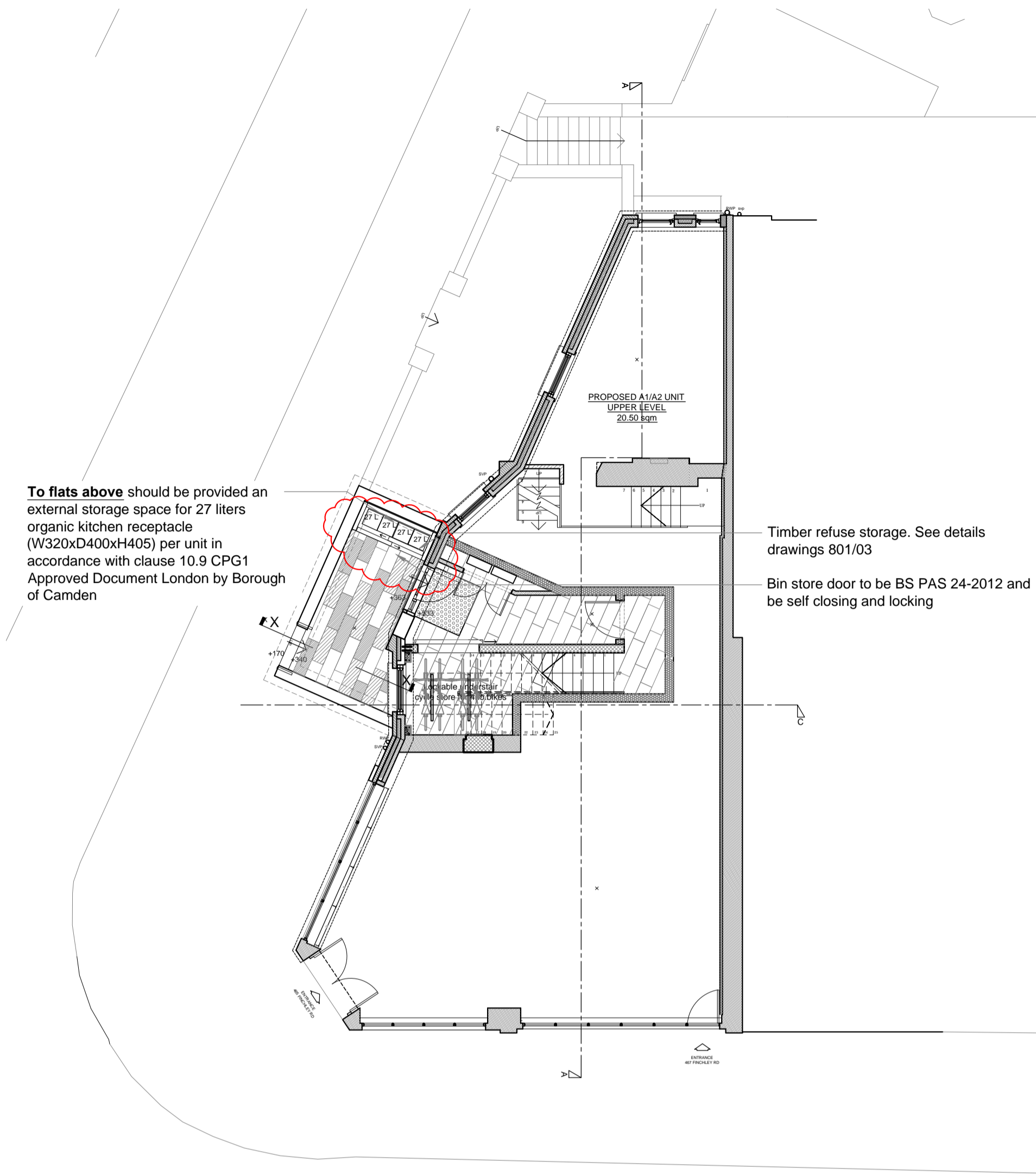


1 Proposed Lower Level Plan showing waste storage location to unit A1/A2
801 SCALE 1:100

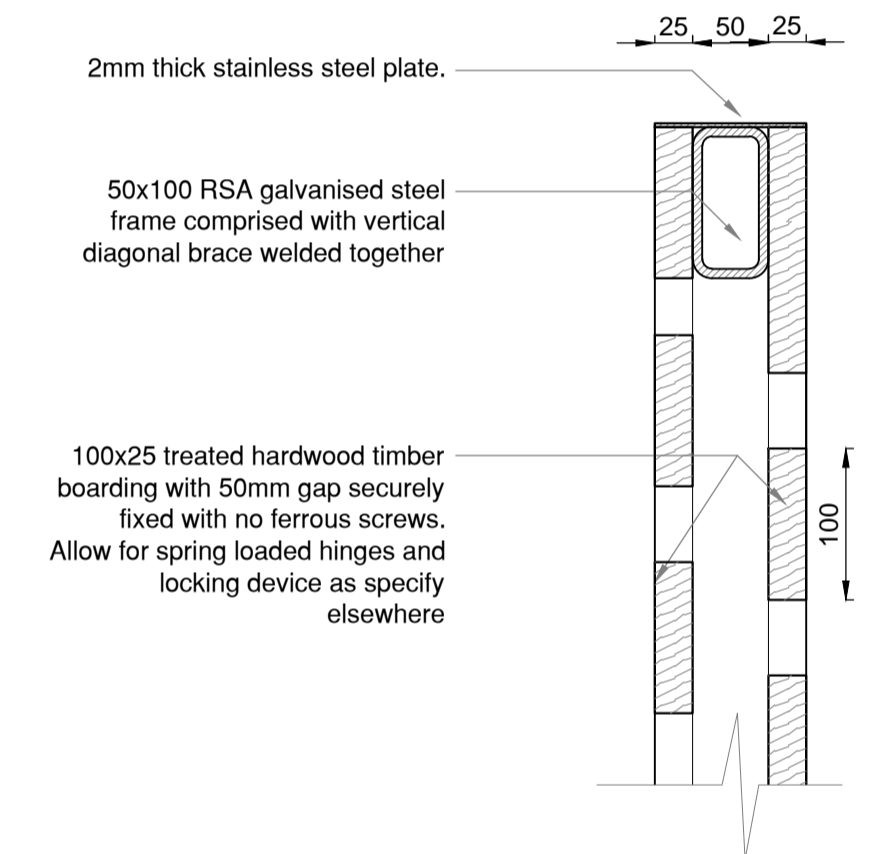


1 Proposed Ground Floor Plan showing waste storage to upper parts
801 SCALE 1:100

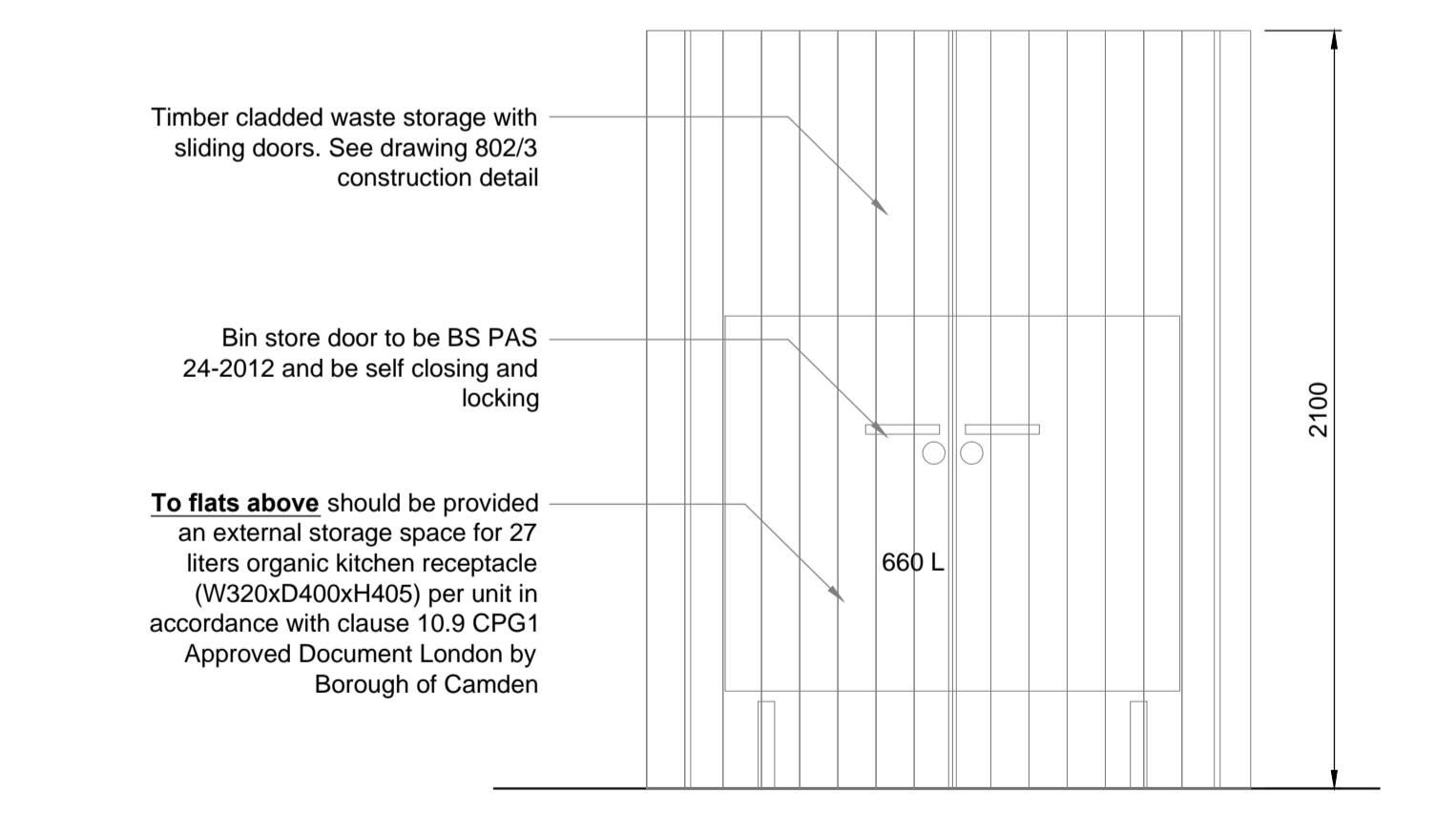
Waste Storage

To dwellings should be provided an external storage space for 27 litre organic kitchen receptacle (W320xD400xH405) per unit in accordance with clause 10.9 CPG1 Approved Document London by Borough of Camden

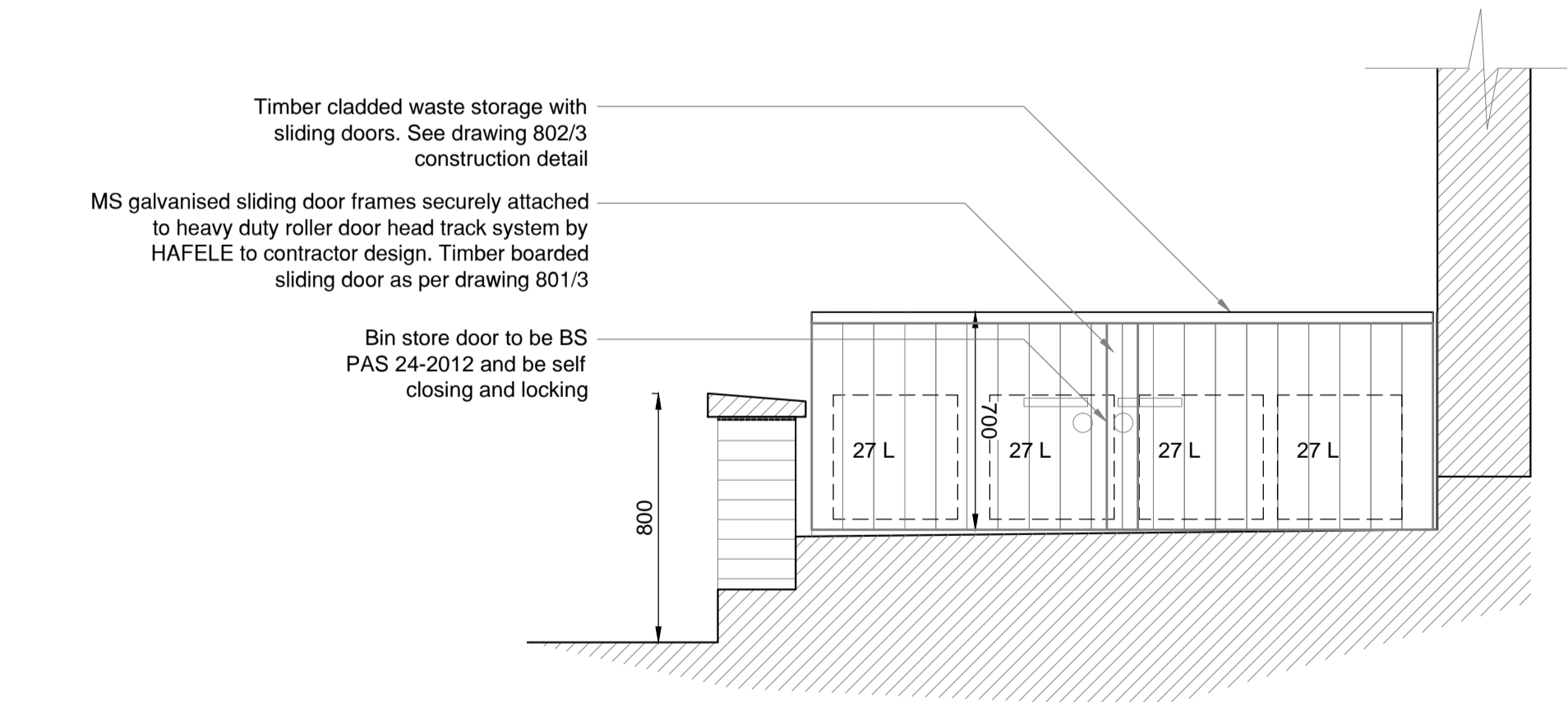
To shop should be install 660L Eurobin (1310x1260x730)mm to provided one cubic metre storage space every 300-500 sqm of commercial space in accordance with clause 10.18 CPG1 Approved Document by London Borough of Camden. Type of bin is to be agreed by collection contractor



3 Typical timber gates construction
801 SCALE 1:5



4 Elevation Y-Y showing waste storage to upper parts
801 SCALE 1:20



5 Elevation X-X showing waste storage to upper parts
801 SCALE 1:20

NOTES:
The drawings and the design hereon is the copyright of Milan Babic Architects Ltd and must not be reproduced without their written consent.
Figured dimensions only to taken from this drawing. All dimensions to be checked on site and Milan Babic Architects Ltd informed immediately of any discrepancies.
All works to be carried out in accordance with Local Authority approval, Building Regulations and current British Standards
Indicates revisions made to this drawing.

REV	DATE	INITIALS	DESCRIPTION
00	26.06.2014	DC	FIRST ISSUE

Milan Babic
Architects Ltd

Architects + Urban Designer
Bickel's Yard
151B Bermondsey Street
London SE1 3UW
TEL: (0)203 117 0120
FAX: (0)203 117 0122
E-mail:
milan@mb-architects.co.uk

PROJECT:	BUILDING REGULATION SUBMISSION Proposed 4 No. New Residential Units to upper parts 465 - 467 Finchley Road NW3 6HS		
CLIENT:	A.Govani		
DWG:	Waste Storage details		
DWG:	BR/679/801	REV: 00	DATE: APR 2014
SCALE:	1:100/1:20/1:5 @ A1		DRAWN DC