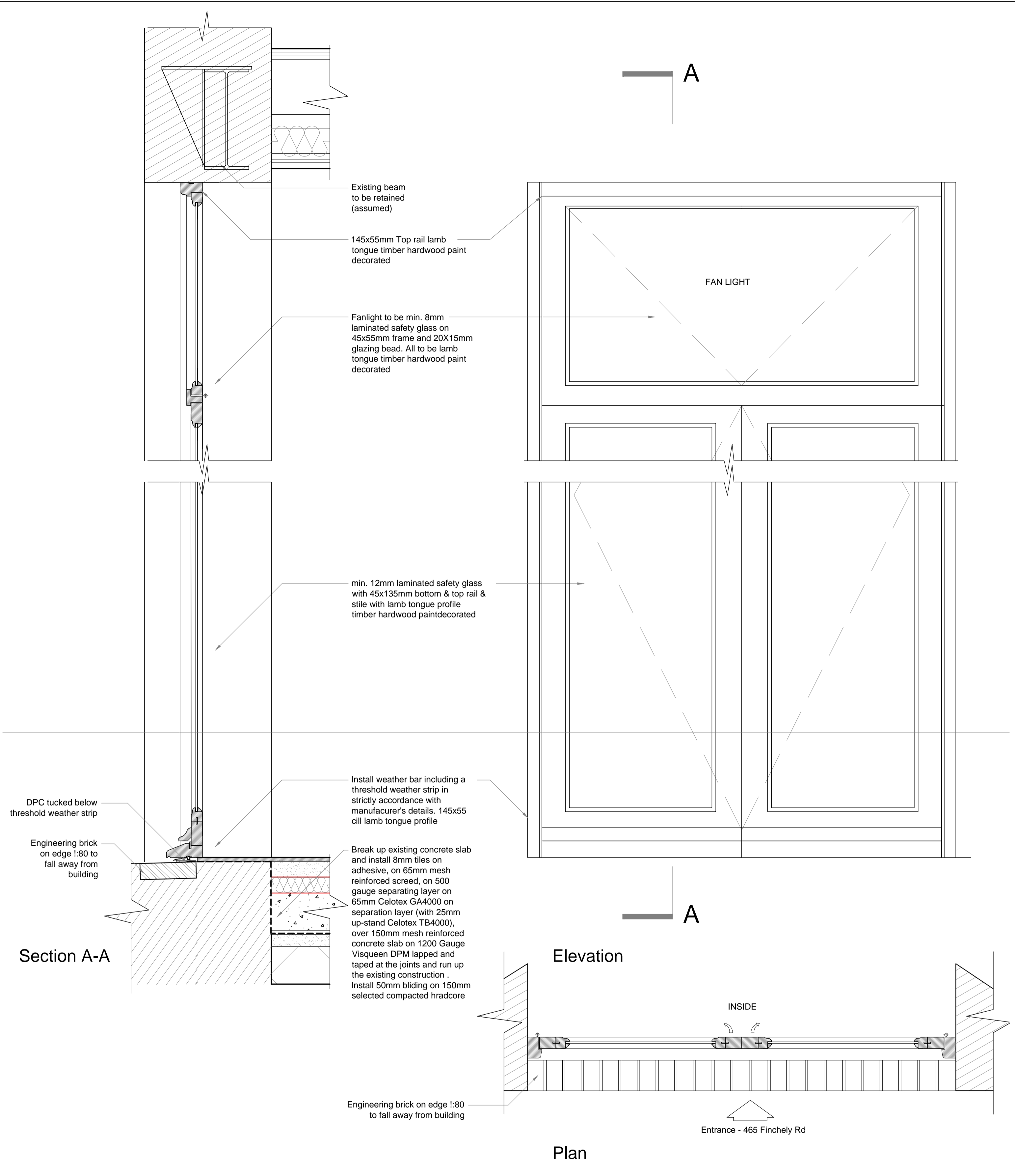


Section  
Plan  
FD1 Shopfront window  
701 SCALE 1:10



Section A-A

Elevation

Plan

FD2 Shopfront: Entrance Door  
701 SCALE 1:10

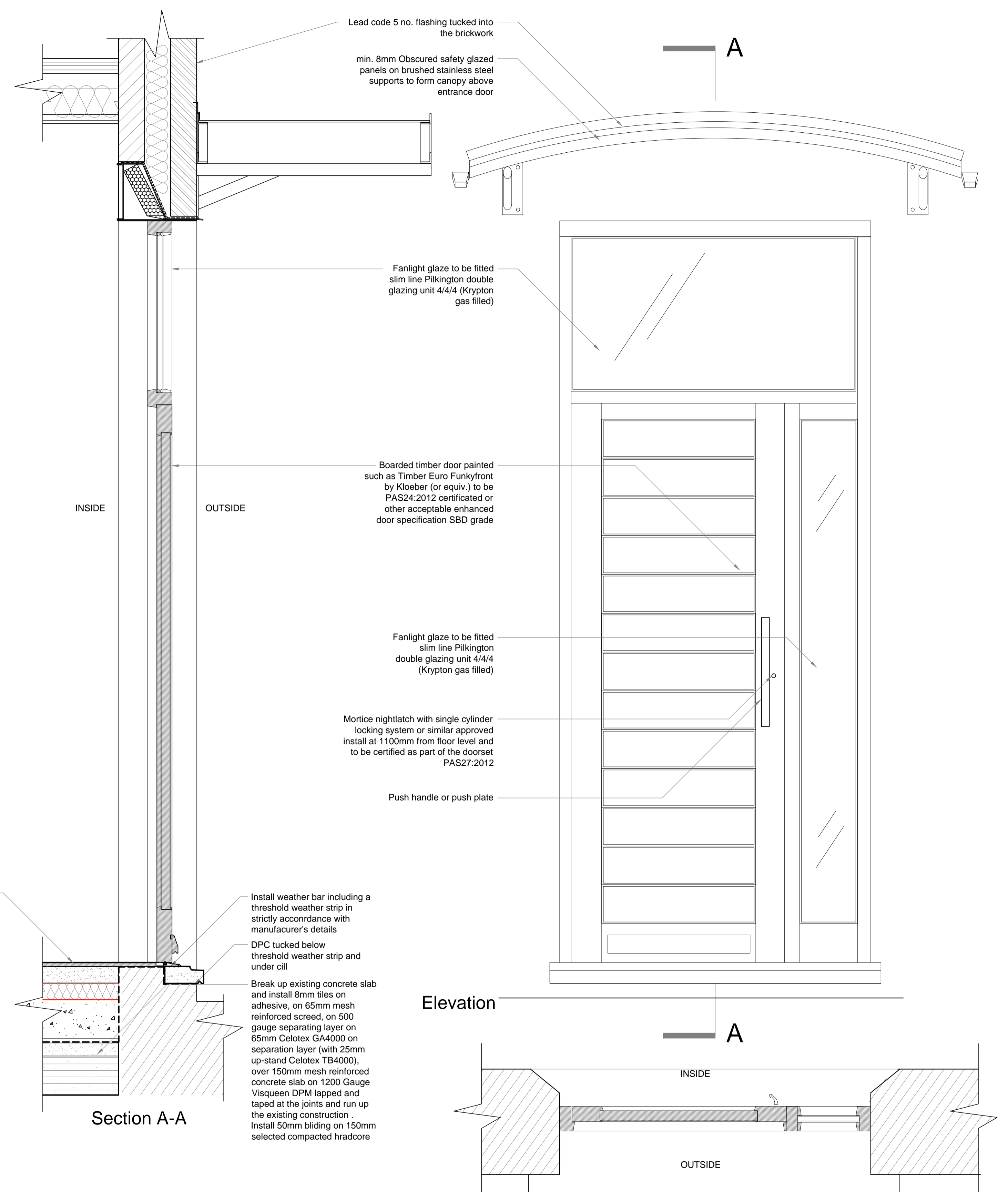
NOTES:  
The drawings and the design hereon is the copyright of Milan Babic Architects Ltd and must not be reproduced without their written consent.  
Figured dimensions only to taken from this drawing. All dimensions to be checked on site and Milan Babic Architects Ltd informed immediately of any discrepancies.  
All works to be carried out in accordance with Local Authority approval, Building Regulations and current British Standards  
Indicates revisions made to this drawing.

REV	DATE	INITIALS	DESCRIPTION
00	26.06.2014	DC	FIRST ISSUED

Milan Babic  
Architects Ltd

Architects + Urban Designer  
Bickel's Yard  
151B Bermondsey Street  
London SE1 3UW  
TEL: (0)203 117 0120  
FAX: (0)203 117 0122  
E-mail:  
milan@mb-architects.co.uk

PROJECT:	BUILDING REGULATION SUBMISSION Proposed 4 No. New Residential Units to upper parts 465 - 467 Finchley Road NW3 6HS		
CLIENT:	A.Govani		
DWG:	Fabrication Detail: Windows & doors to Unit A1/A2		
DWG:	BR/679/701	REV: 00	DATE: APR 2014
SCALE:	1:10 @ A1		DRAWN DC



Lead code 5 no. flashing tucked into the brickwork

min. 8mm Obscured safety glazed panels on brushed stainless steel supports to form canopy above entrance door

Fanlight glaze to be fitted slim line Pilkington double glazing unit 4/4/4 (Krypton gas filled)

Boarded timber door painted such as Timber Euro Funkyfront by Kloeber (or equiv.) to be PAS24:2012 certified or other acceptable enhanced door specification SBD grade

Fanlight glaze to be fitted slim line Pilkington double glazing unit 4/4/4 (Krypton gas filled)

Mortice nightlatch with single cylinder locking system or similar approved install at 1100mm from floor level and to be certified as part of the doorset PAS27:2012

Push handle or push plate

Install weather bar including a threshold weather strip in strictly accordance with manufacturer's details

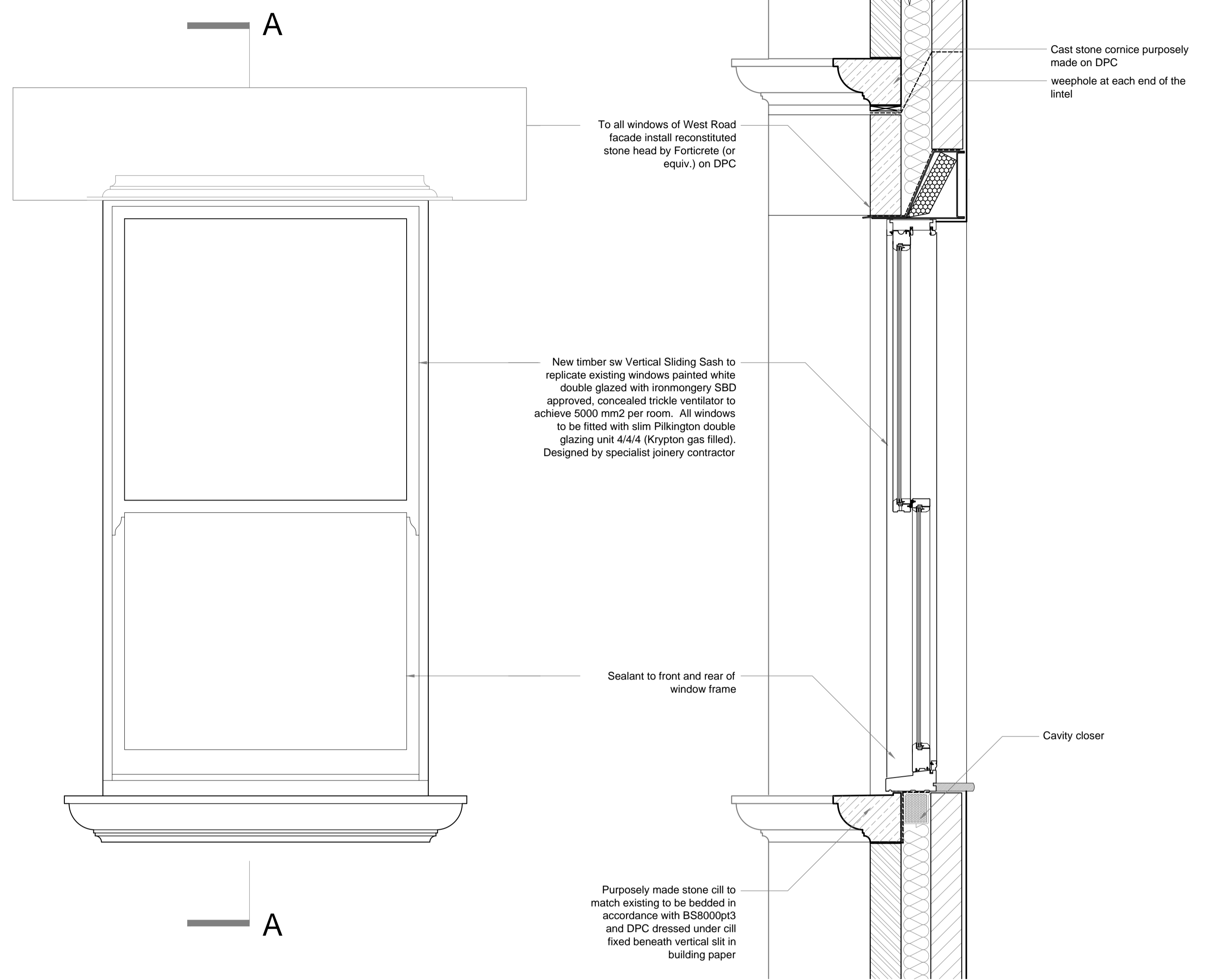
DPC tucked below threshold weather strip and under cill

Break up existing concrete slab and install 8mm tiles on adhesive, on 65mm mesh reinforced screed, on 500 gauge separating layer on 65mm Celotex GA4000 on separation layer (with 25mm up-stand Celotex TB4000), over 150mm mesh reinforced concrete slab on 1200 Gauge Visqueen DPM lapped and taped at the joints and run up the existing construction. Install 50mm blinding on 150mm selected compacted hardcore

Elevation

Plan

Note: Contractor to provide fabrication drawings for approve well in advance of the work



To all windows of West Road facade install reconstituted stone head by Forticrete (or equiv.) on DPC

New timber sw Vertical Sliding Sash to replicate existing windows painted white double glazed with ironmongery SBD approved, concealed trickle ventilator to achieve 5000 mm2 per room. All windows to be fitted with slim Pilkington double glazing unit 4/4/4 (Krypton gas filled). Designed by specialist joinery contractor

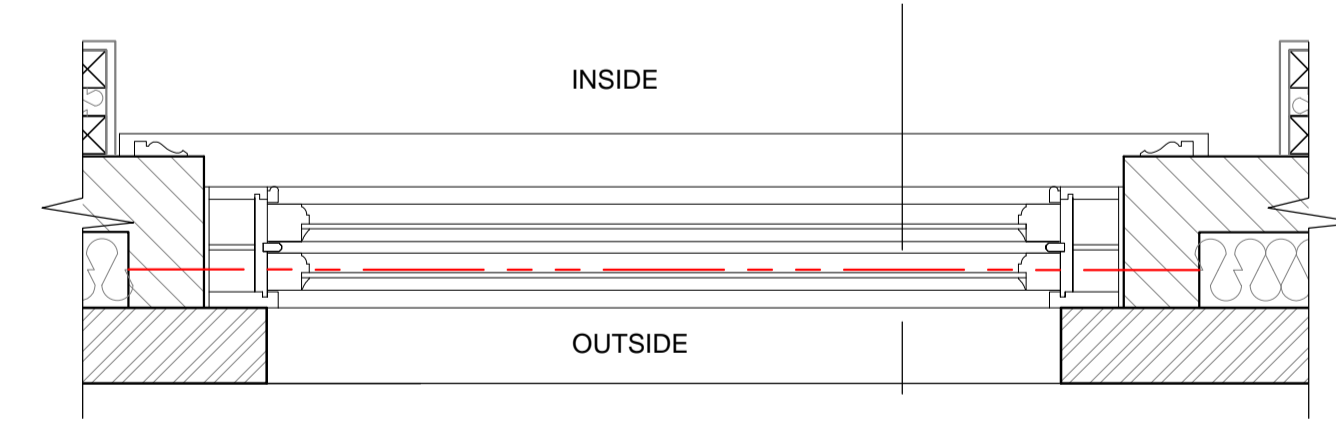
Sealant to front and rear of window frame

Purposely made stone cill to match existing to be bedded in accordance with BS8000pt3 and DPC dressed under cill fixed beneath vertical slit in building paper

Cavity closer

Section A-A

Elevation



Plan

Note: Contractor to check all window aperture on site and install new windows to suit

Note: All windows elements to meet performance requirements as stated in the "Noise Impact Assessment" compiled by KP Acoustic ref. 9812.NIA.01 on 28th February 2013.

FD4 Entrance door to the building  
703 SCALE 1:10

FD2 Typical Sash Window Detail  
702 SCALE 1:10

**NOTES:**  
The drawings and the design hereon is the copyright of Milan Babic Architects Ltd and must not be reproduced without their written consent.  
Figured dimensions only to taken from this drawing. All dimensions to be checked on site and Milan Babic Architects Ltd informed immediately of any discrepancies.  
All works to be carried out in accordance with Local Authority approval, Building Regulations and current British Standards  
Indicates revisions made to this drawing.

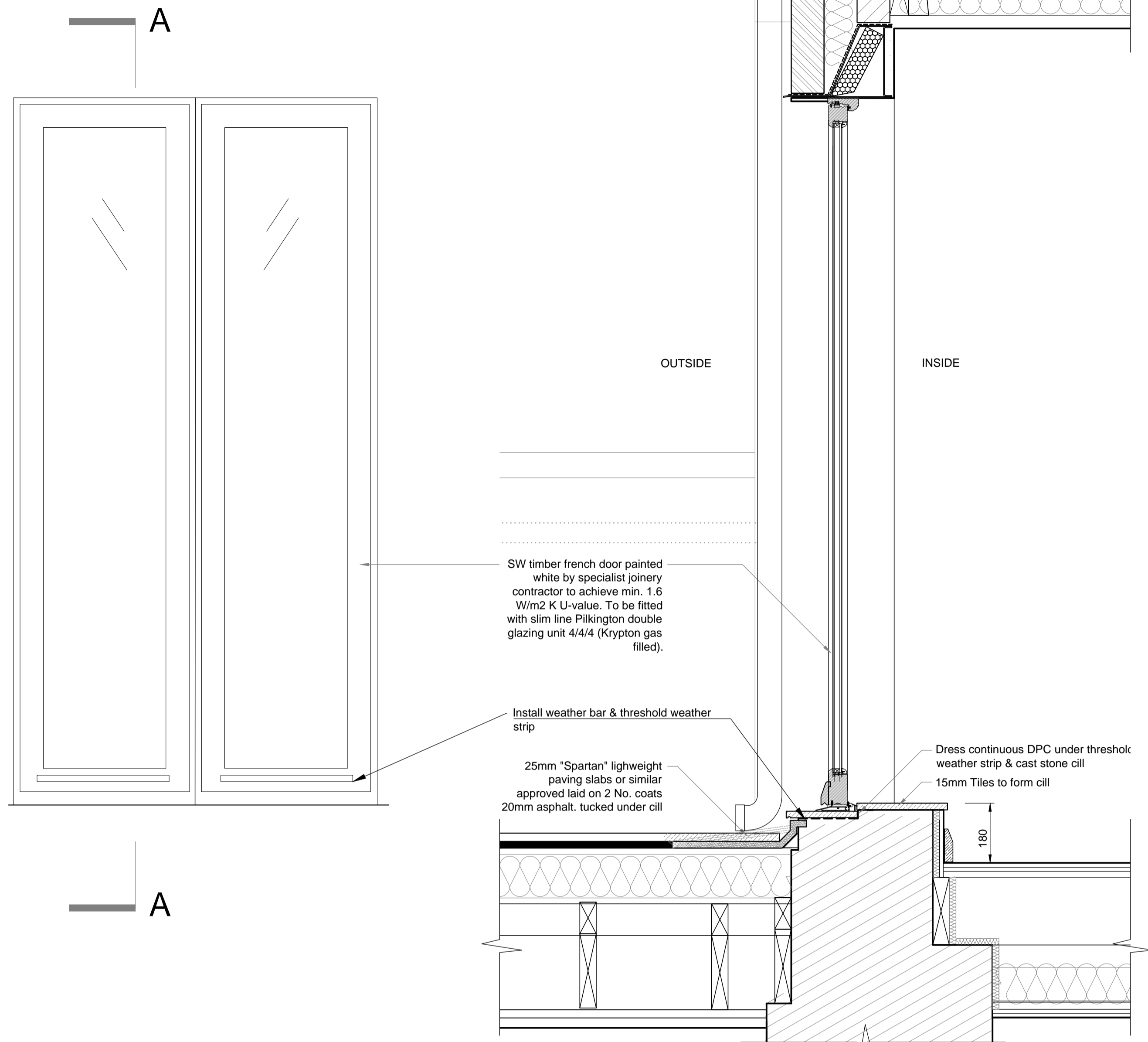
REV	DATE	INITIALS	DESCRIPTION
00	26.06.2014	DC	FIRST ISSUED
A	14.07.2014	DC	Added performance requirements

**Milan Babic**  
Architects Ltd

Architects + Urban Designer  
Bickel's Yard  
151B Bermondsey Street  
London SE1 3UW  
TEL: (0)203 117 0120  
FAX: (0)203 117 0122

E-mail:  
milan@mb-architects.co.uk

PROJECT:	<b>BUILDING REGULATION SUBMISSION Proposed 4 No. New Residential Units to upper parts 465 - 467 Finchley Road NW3 6HS</b>		
CLIENT:	A.Govani		
DWG:	<b>Entrance door to upper parts &amp; Typical Sash windows</b>		
DWG:	<b>BR/679/702</b>	REV: <b>A</b>	DATE: APR 2014
SCALE:	1:10 @ A1	DRAWN	DC

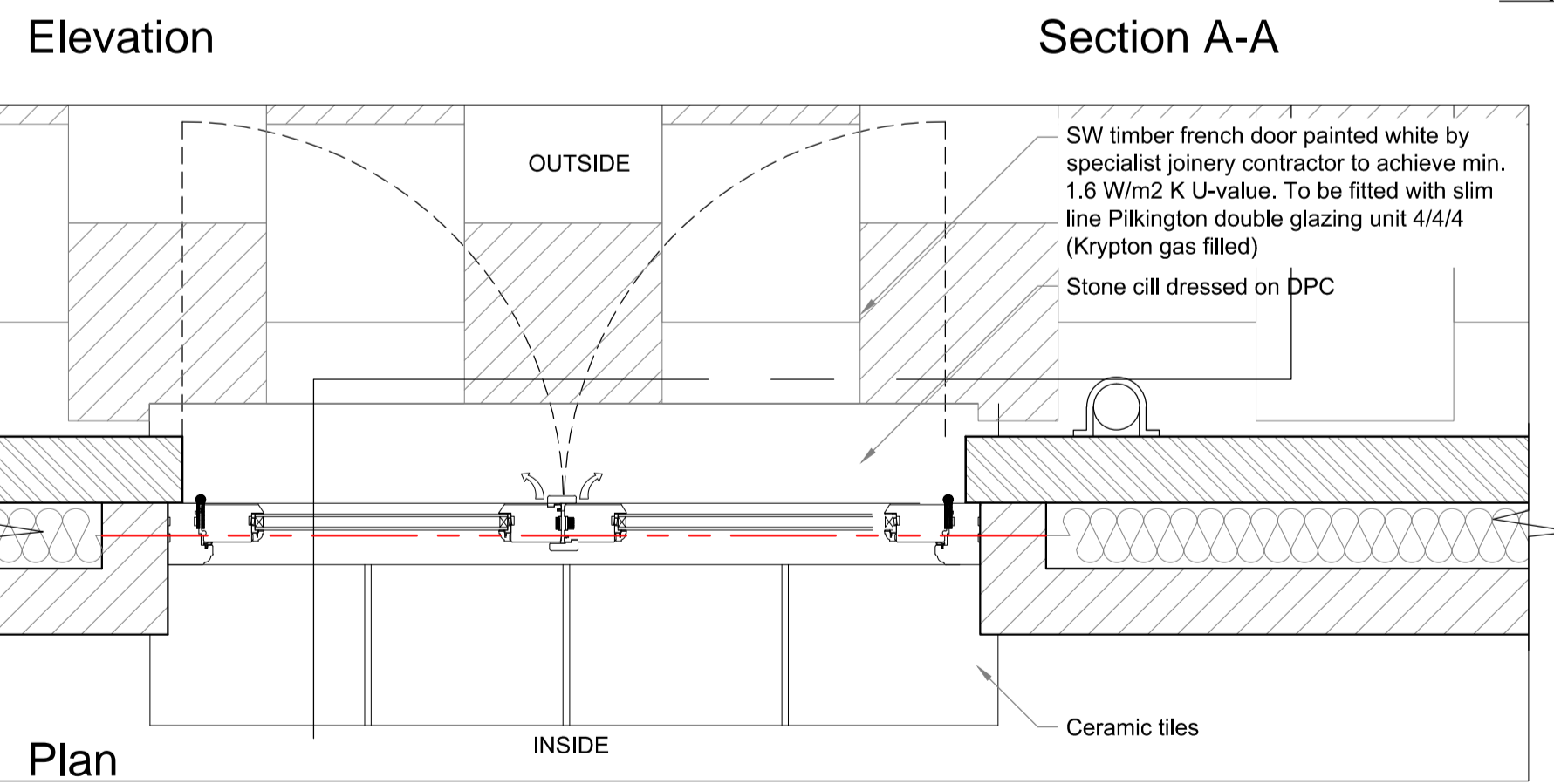


SW timber french door painted white by specialist joinery contractor to achieve min. 1.6 W/m<sup>2</sup> K U-value. To be fitted with slim line Pilkington double glazing unit 4/4/4 (Krypton gas filled).

Install weather bar & threshold weather strip

25mm "Spartan" lightweight paving slabs or similar approved laid on 2 No. coats 20mm asphalt, tucked under cill

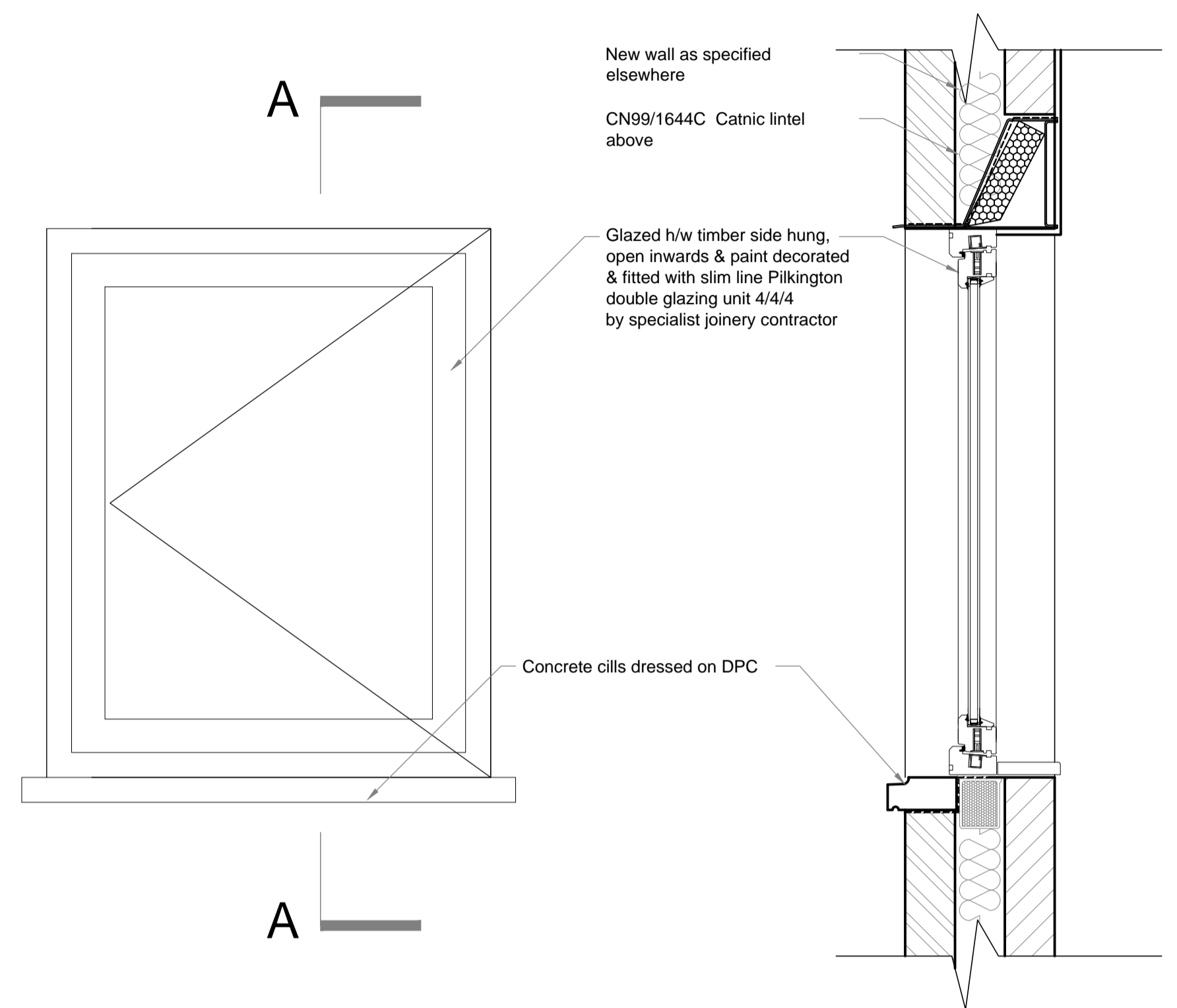
Dress continuous DPC under threshold weather strip & cast stone cill  
15mm Tiles to form cill



SW timber french door painted white by specialist joinery contractor to achieve min. 1.6 W/m<sup>2</sup> K U-value. To be fitted with slim line Pilkington double glazing unit 4/4/4 (Krypton gas filled)

Stone cill dressed on DPC

Ceramic tiles



New wall as specified elsewhere

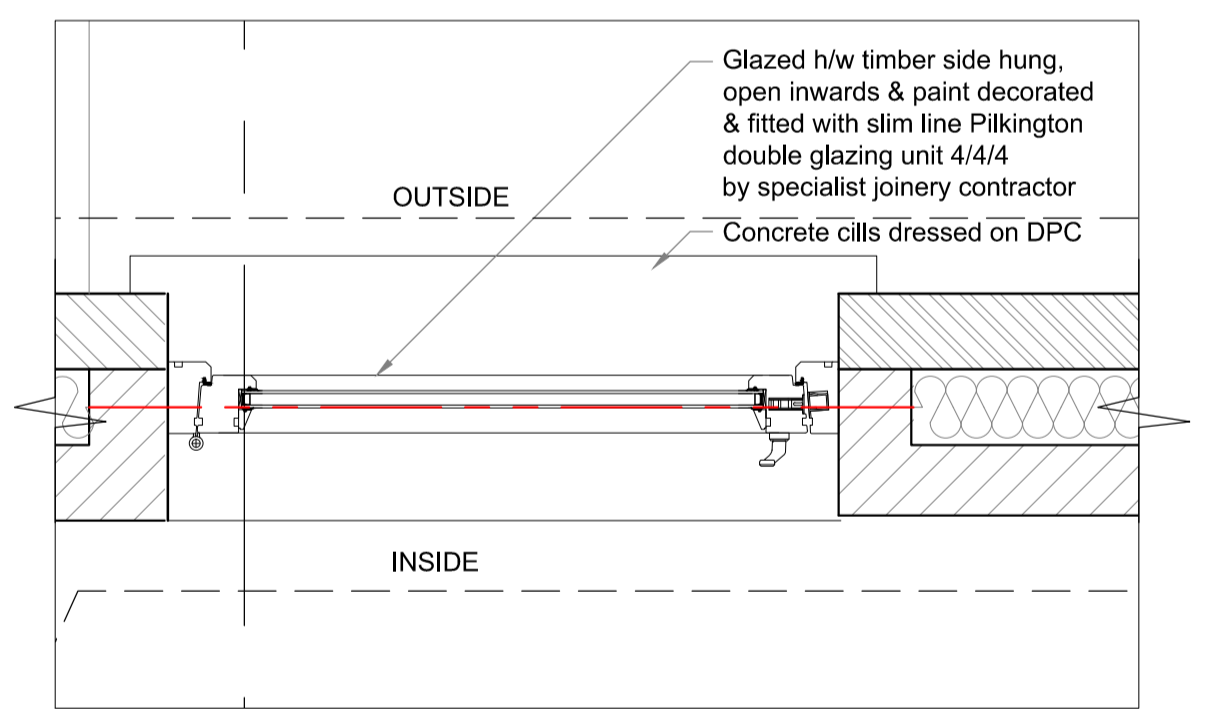
CN99/1644C Catnic lintel above

Glazed h/w timber side hung, open inwards & paint decorated & fitted with slim line Pilkington double glazing unit 4/4/4 by specialist joinery contractor

Concrete cills dressed on DPC

Section A-A

Elevation



Glazed h/w timber side hung, open inwards & paint decorated & fitted with slim line Pilkington double glazing unit 4/4/4 by specialist joinery contractor

Concrete cills dressed on DPC

Plan

Note: All windows elements to meet performance requirements as stated in the "Noise Impact Assessment" compiled by KP Acoustic ref. 9812.NIA.01 on 28th February 2013.

FD2 Typical Side hung glazed window details  
703 SCALE 1:10

FD1 Typica french door details  
702 SCALE 1:10

**NOTES:**  
The drawings and the design hereon is the copyright of Milan Babic Architects Ltd and must not be reproduced without their written consent.  
Figured dimensions only to taken from this drawing. All dimensions to be checked on site and Milan Babic Architects Ltd informed immediately of any discrepancies.  
All works to be carried out in accordance with Local Authority approval, Building Regulations and current British Standards  
Indicates revisions made to this drawing.

REV	DATE	INITIALS	DESCRIPTION
00	26.06.2014	DC	FIRST ISSUED
A	14.07.2014	DC	Added performance requirements

**Milan Babic**  
Architects Ltd

Architects + Urban Designer  
Bickel's Yard  
151B Bermondsey Street  
London SE1 3UW  
TEL: (0)203 117 0120  
FAX: (0)203 117 0122

E-mail:  
milan@mb-architects.co.uk

PROJECT:	<b>BUILDING REGULATION SUBMISSION Proposed 4 No. New Residential Units to upper parts 465 - 467 Finchley Road NW3 6HS</b>		
CLIENT:	A.Govani		
DWG:	<b>FD: French door &amp; Timber side hung window</b>		
DWG:	<b>BR/679/703</b>	REV: <b>A</b>	DATE: <b>APR 2014</b>
SCALE:	1:10 @ A1	DRAWN	DC