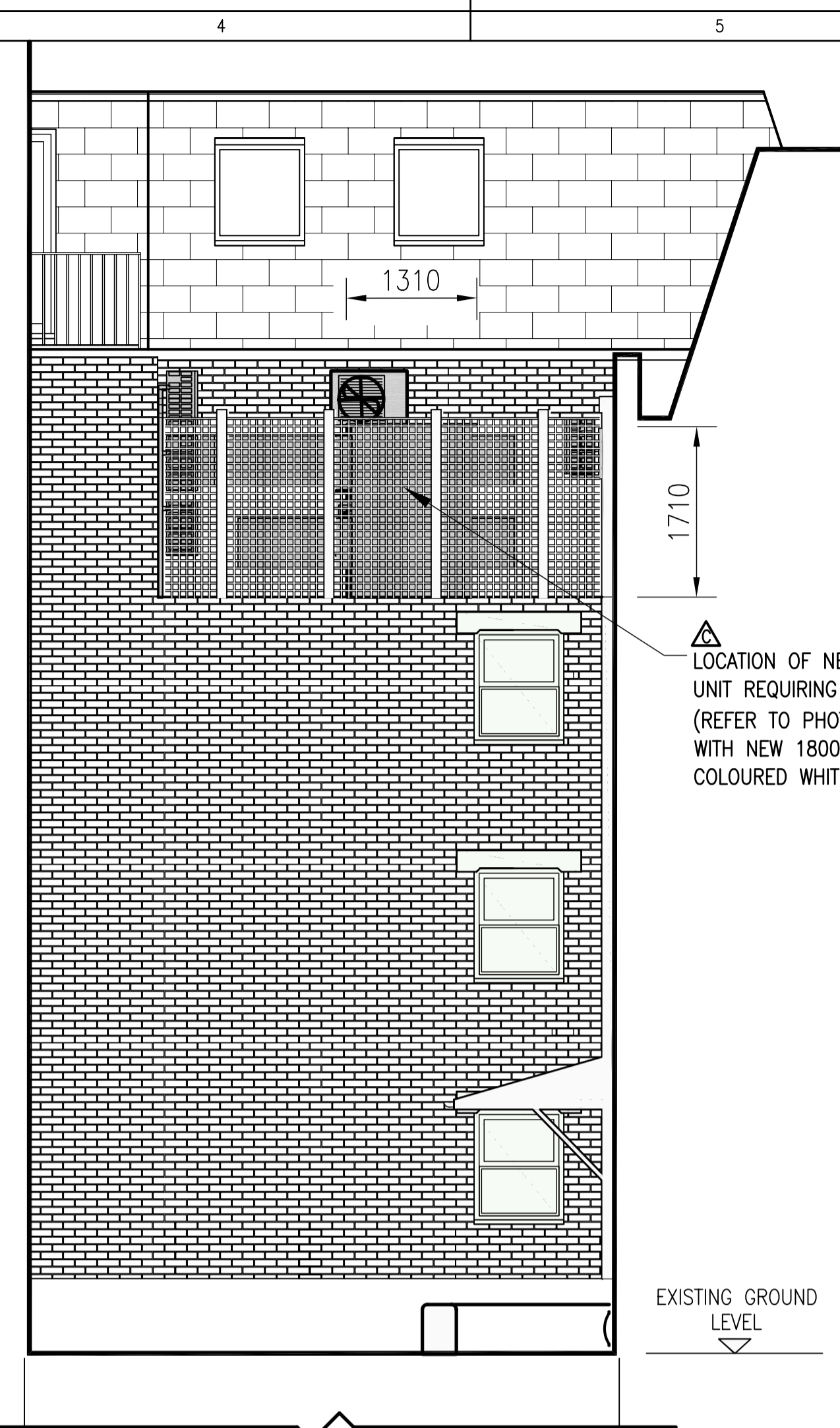
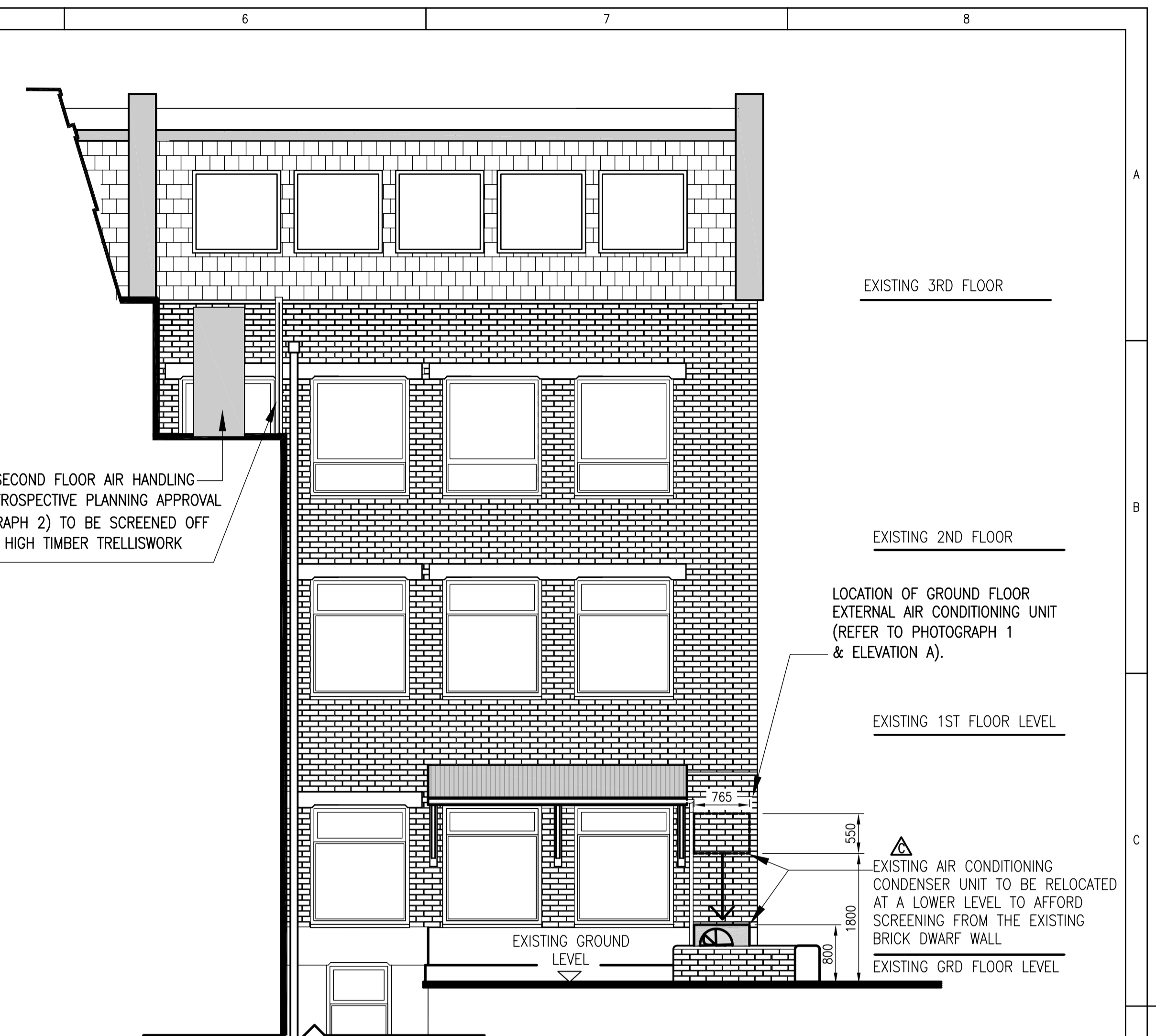


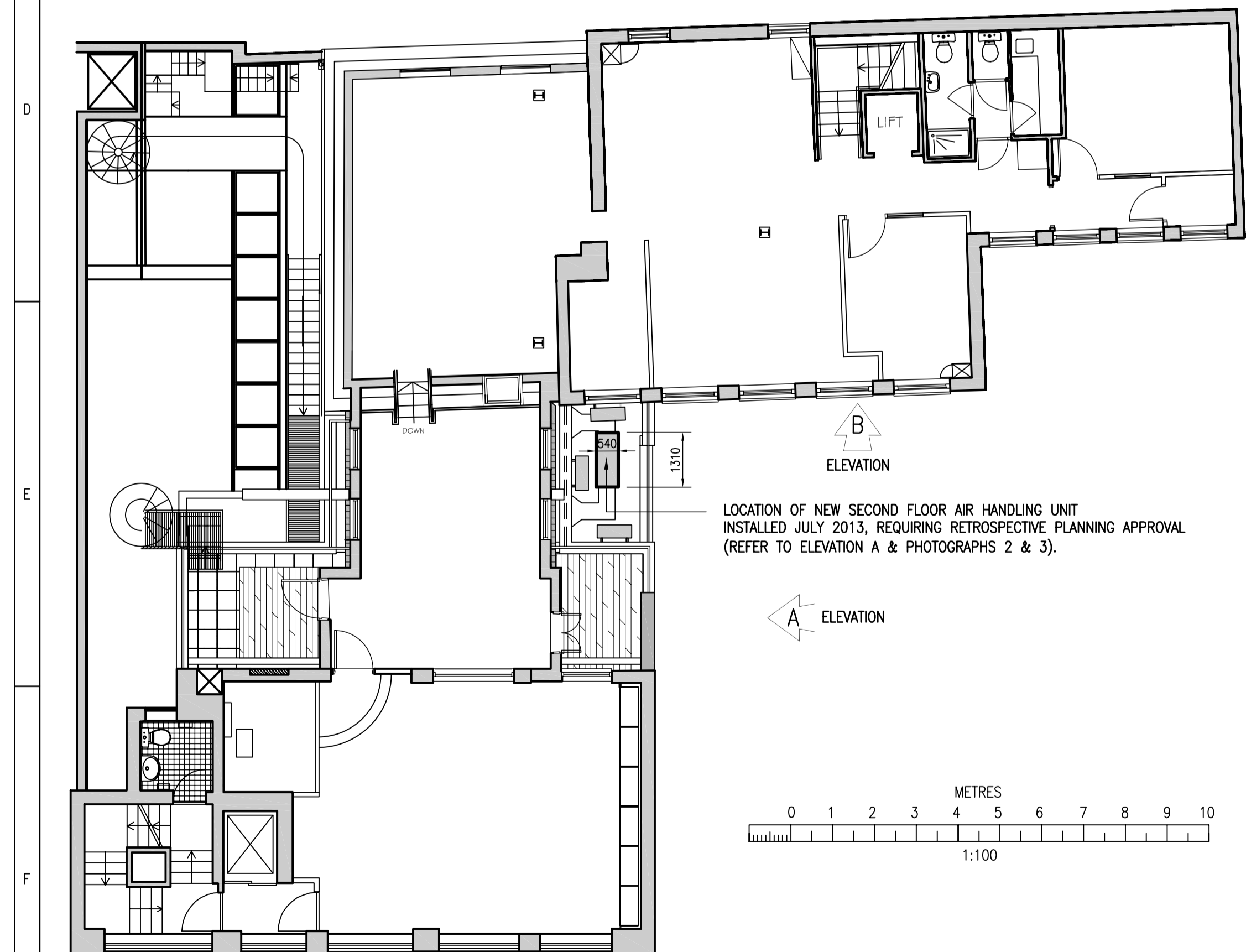
NEW PROPOSED GROUND FLOOR PLAN
(1:100 @ A1)



NEW PROPOSED SIDE ELEVATION A
(SCALE 1:50)



NEW PROPOSED REAR ELEVATION B
(SCALE 1:50)



NEW PROPOSED THIRD FLOOR PLAN
(1:100 @ A1)



PHOTOGRAPH 1
LOCATION OF NEW GROUND FLOOR AIR CONDITIONING UNIT INSTALLED JULY 2013, REQUIRING RETROSPECTIVE PLANNING APPROVAL (AC UNIT IS WALL MOUNTED UNDER THE CANOPY - REFER TO ELEVATION A).



PHOTOGRAPH 2
LOCATION OF NEW SECOND FLOOR AIR HANDLING UNIT INSTALLED JULY 2013, REQUIRING RETROSPECTIVE PLANNING APPROVAL.



PHOTOGRAPH 3
LOCATION OF NEW SECOND FLOOR AIR HANDLING UNIT INSTALLED JULY 2013, REQUIRING RETROSPECTIVE PLANNING APPROVAL.

C	AMENDED TO PLANNING REQUIREMENTS	TR	DW	DW	10/07/14
B	RE-ISSUED FOR RETROSPECTIVE PLANNING APPROVAL	TR	DW	DW	02/07/14
A	ISSUED FOR RETROSPECTIVE PLANNING APPROVAL	VB	EO	DW	06/02/14
Revision	Description	Drawn	Chk'd	App	Date
 MARIE STOPES INTERNATIONAL Marie Stopes International 1 Conway Street Fitzroy Square London W1T 6LP tel: 020 7636 6200 fax: 020 7034 2369		Drawn	VB		
1 CONWAY STREET, LONDON EXTERNAL AIR CONDITIONING UNITS NEW PROPOSED PLANS & ELEVATIONS		Checked	EO		
		Approved	DW		
		Date	JAN 2014		
		Scale	AS SHOWN @ A1		
Drawing No. 141501/P03		Revision		C	