

**LTH NOTES:**

Criterion 1 - 1 No on plot parking provided for disabled use.

Criterion 2- Short distance (12m) from parking to entrance with ramped access.

Criterion 3- Ramp @ 1:12 gradient provided for approach to entrance.

Criterion 4- All entrances compliant with LTH requirements.

Criterion 5- Communal stairs to have handrail on both sides and easy going risers.

Criterion 6- LTH compliant circulations space in hallways and doorways provided.

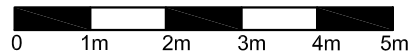
Criterion 7- All living rooms/dining areas provide basic circulation for wheelchair users.

Criterion 8- All flats have living space on the entrance level.

Criterion 9- Flat No's 2 & 5 to have potential for temporary bedspace in Living rooms.

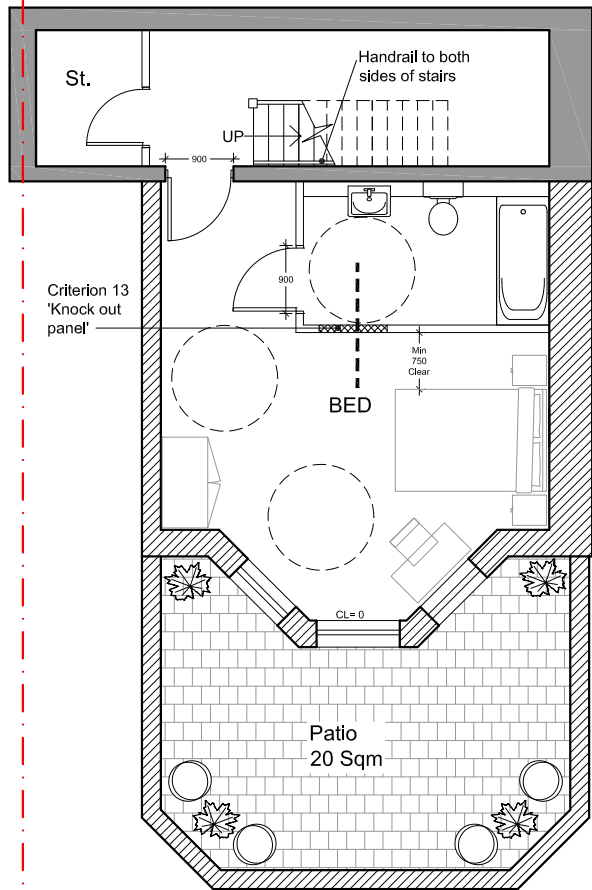
Criterion 10 - WC for Flats 2 & 5 to have wet floor system with floor drain for possible shower.

SCALE 1:100

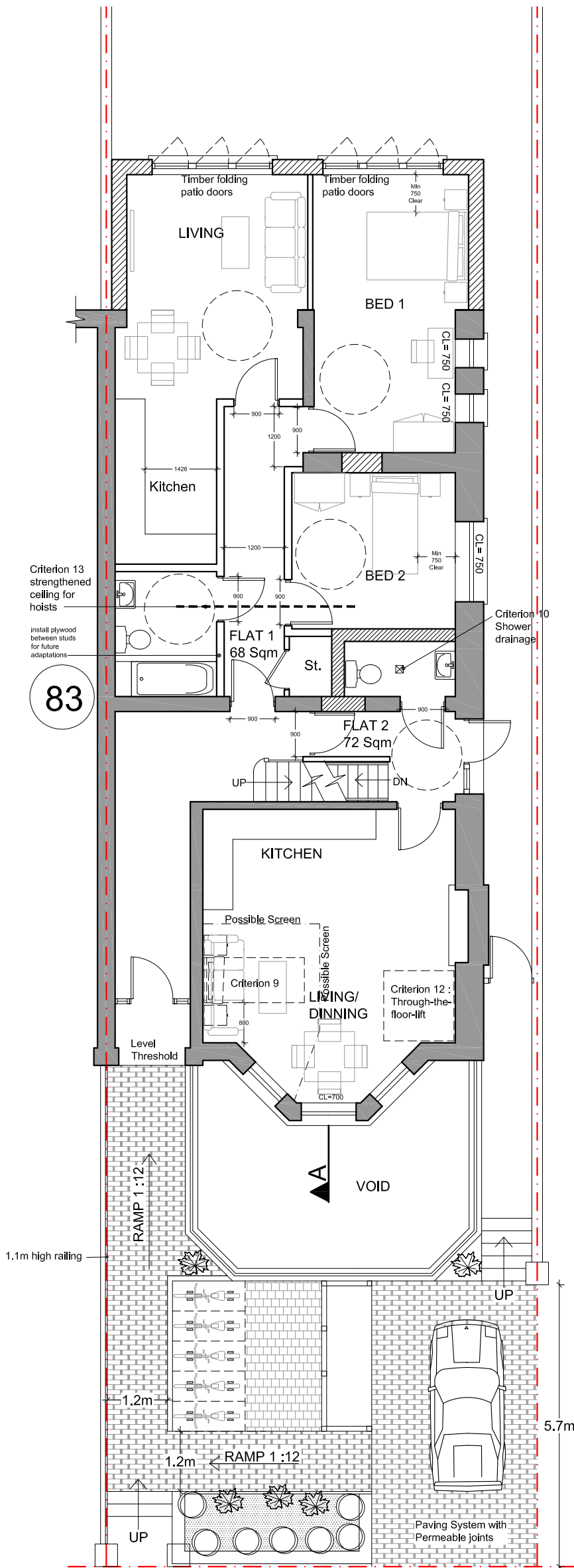


**NOTES:**

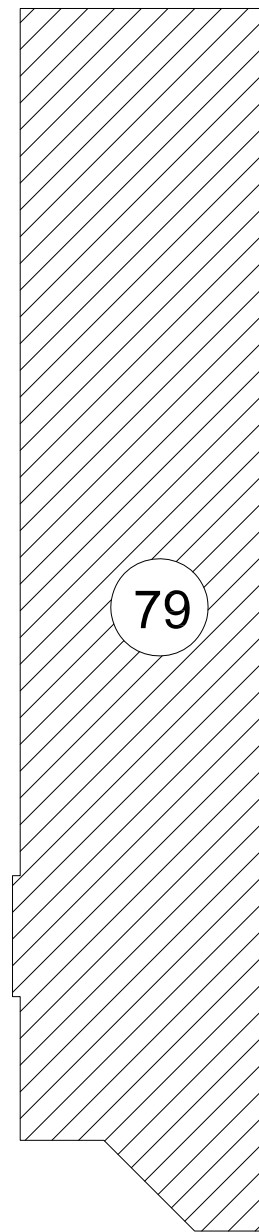
1. This drawing is a COPYRIGHT of Archetype.
2. Do not scale the drawing, use figured dimensions only.
3. All dimensions must be checked on site and Archetype should be informed immediately of any discrepancies prior to construction.



**LOWER GROUND FLOOR PLAN**  
39 Sqm



**GROUND FLOOR PLAN**  
120 Sqm



Revision	Description	Date
<p><b>Archetype</b> Architects Planners Designers 121 Gloucester Place London W1U 6JY Tel: 020 7486 3655 Fax: 020 7486 3658 e-mail: architect@archetype.org.uk Web: www.archetype.org.uk</p>		
Project: 81 FORDWYCH ROAD LONDON NW2 3TL		
Drawing Title: PROPOSED PLANS LIFETIME HOMES COMPLIANCE		
Drawn: ZD	Approved:	Scale: 1:100@ A3 Date: JUNE 14
Drawing No. 1050 (03) 01		Revision:
CAD Ref.		