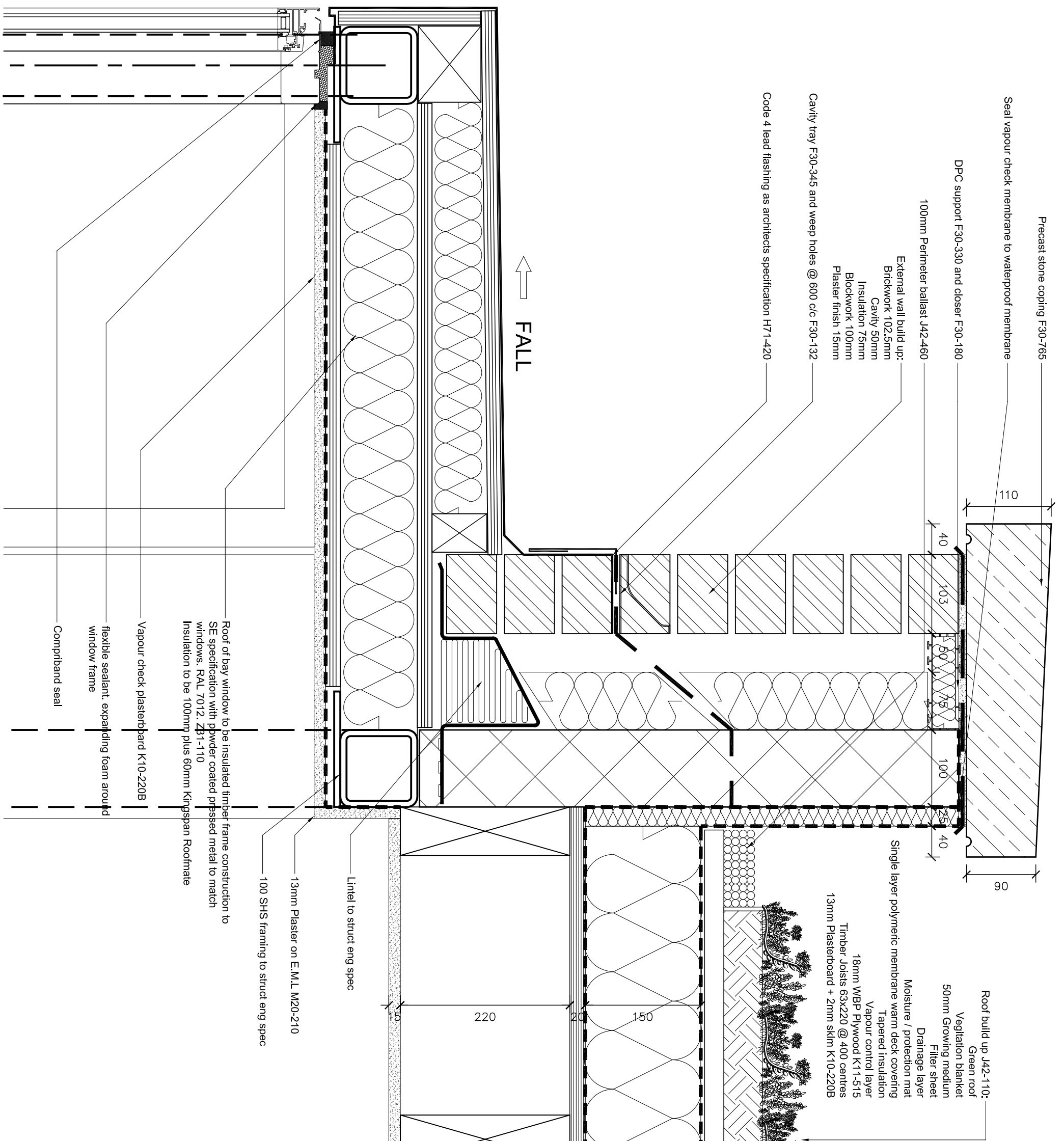


revision	date	author	revision notes
T1	17.05.13	GLJ	First draft tender.
C1	20.11.13	ame	air seal, construction issue
C2	18.02.14	ame	Amended to SE details
C3	18.04.14	ame	Thermal performance airtightness checklist added



CHECKLIST THERMAL PERFORMANCE OF JUNCTION

- Install a proprietary cavity closer min. thermal resistance not less than 0.45m²/KW
- Ensure that all gaps around and between lintels are filled with tightly packed insulation material.
- Minimum frame overlap to be 30mm
- Ensure that partial fill insulation is secured against the inner face of the cavity wall.
- AIR BARRIER CONTINUITY**
- Apply flexible sealant to all interfaces between the internal air barrier (plaster/ plasterboard) and the window /door frame.
- Seal all penetrations through the air barrier (plaster/ plasterboard) using a flexible sealant.
- AIR BARRIER OPTIONS**
- Plaster coat, or
- Blockwork inner leaf/ parging coat applied to inner leaf with plasterboard over, or
- Plasterboard on dabs with continuous ribbon of adhesive around all openings, along the top and bottom of the wall, and at internal and external corners.

Site Manager/ Supervisor: _____ Date: _____

CONSTRUCTION

DO NOT SCALE FROM THIS DRAWING. Verify all dimensions on site.

P K S architects

Project: 43 Belisle Lane, NW3
 Site: Section AA Detail - Bay Window Upper
 Code: 15 @ A3
 Author: GLJ
 Date: 13.03.15
 Rev: 813
 Drawing No: 521-05
 Rev: C3