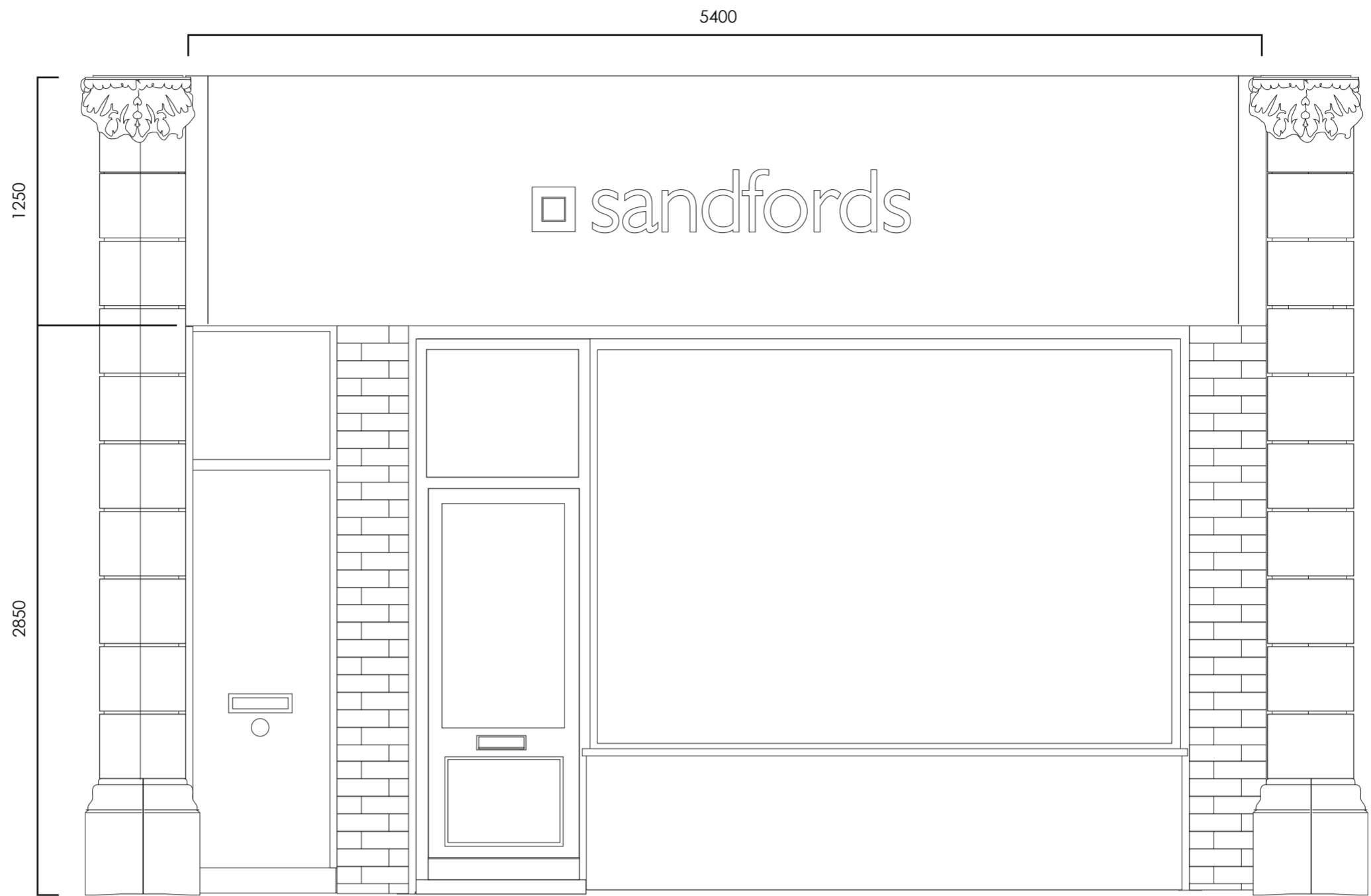


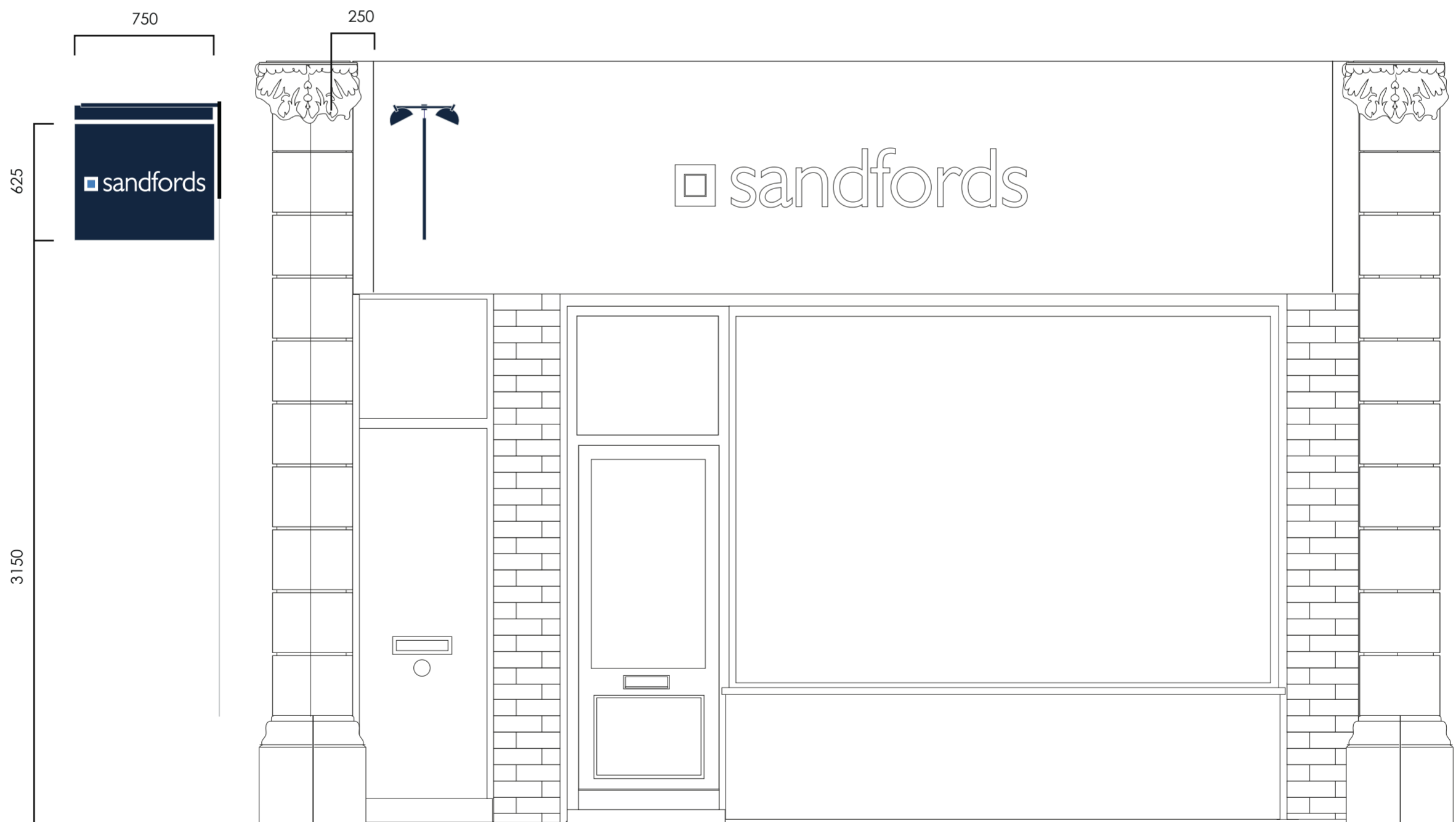
ADVERTISING CONSENT:

For the installation of an externally illuminated 25mm deep projecting sign , dark blue finish with the word 'sandford' and logo in vinyl only.

EXISTING ELEVATION: No current projecting sign present. Proposed unit to be fixed to an existing aluminium fascia tray.



PROPOSED ELEVATION: new projecting sign



CLIENT: Sandfords Estate Agents
DRAWING TITLE: Projecting Sign Planning
DATE: 16/07/14
DRAWN BY: Tim Lowton
DESIGNED BY: Tim Lowton
SITE ADDRESS: 107 Regents Park Road
Primrose Hill, London NW1 8UR
SCALE: 1:25 on A3
REVISION: 1
DIMENSIONS: All dimensions in mm

LIGHTING: Externall illuminated with light emitting only from lights mounted above the suspended panel
COLOUR: Sprayed to match existing fascia tray and RAL5011
MATERIAL: Projecting sign case produced in folded aluminium, with a coloured vinyl logo.

