

LONDON BOROUGH OF CAMDEN

LONDON GOVERNMENT ACT 1963 - SECTION 43

LONDON BUILDING ACTS (AMENDMENT) ACT 1939 - PART 2

NAMING AND NUMBERING OF STREETS AND BUILDINGS

Tha LONDON BOROUGH OF CAMDEN in pursuance of the provisions
of Sections 6 and 11 (as appropriate) of the London Building
Acts (Amendment) Act 1939 HEREBY ASSIGNS the following numbers
to the development known as MERU CLOSE,

1 - 14 (cons) - 4 storey block of flats
15, 16 & 17 - 3 storey houses
18 - 31 (cons) - 3 storey block of flats.

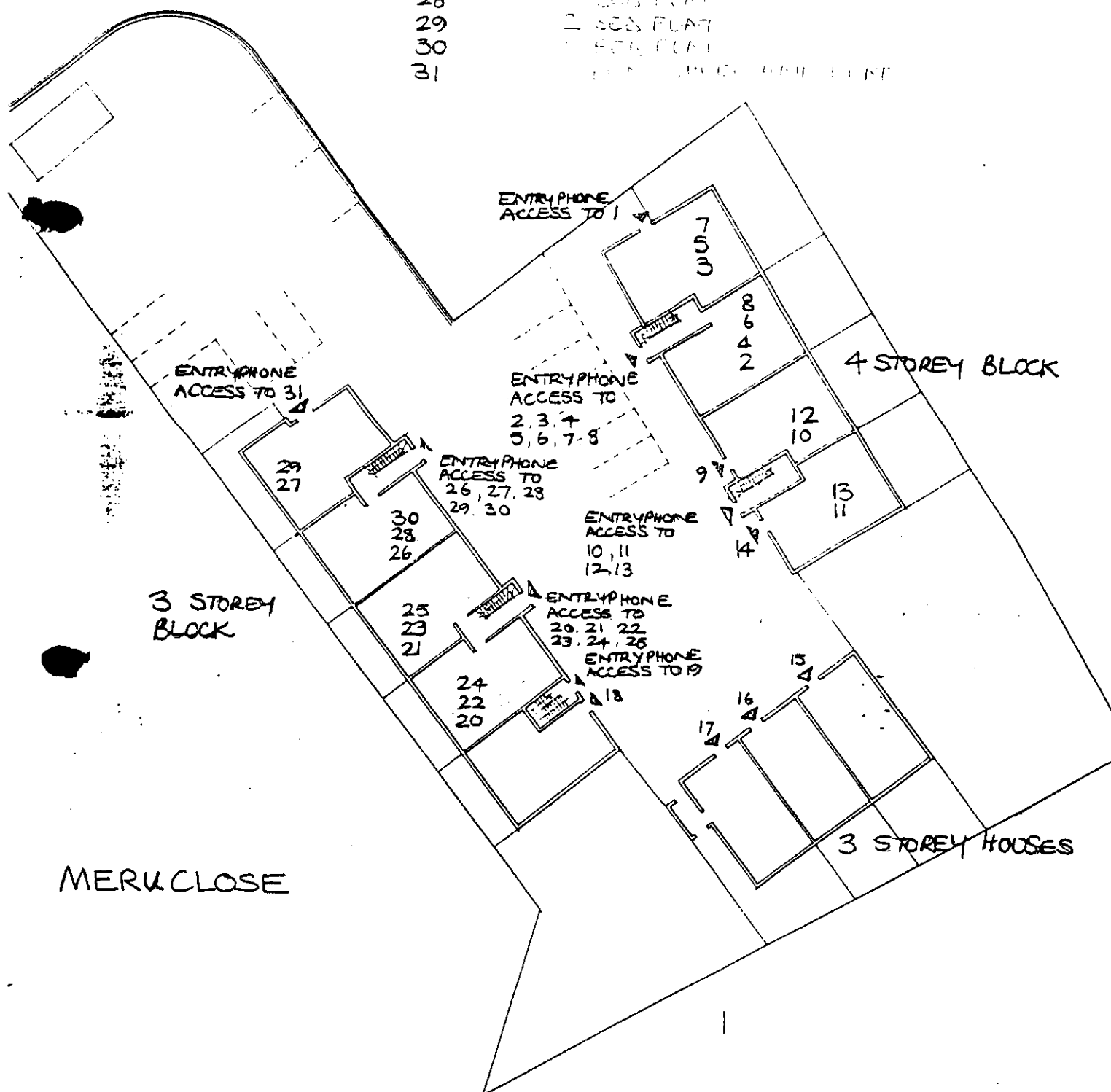
Dated: 15th October 1991



Head of Planning Transport and Employment Service
(Authorised by the Council
to sign this document)..

SCHEDULE OF ACCOMMODATIONS

1	1 BED WHEELCHAIR FLAT
2 TO 8 INC	1 BED FLATS
9	2 BED MAISONETTE
10 TO 13 INC	1 BED FLATS
14	3 BED MAISONETTE
15 TO 17 INC	5 BED HOUSES
18	3 BED MAISONETTE
19	1 BED FLAT
20 TO 26 INC	1 BED FLATS
27	2 BED FLAT
28	1 BED FLAT
29	2 BED FLAT
30	1 BED FLAT
31	1 BED WHEELCHAIR FLAT



SITE PLAN

DEVELOPMENT AT KILN CLOSE LONDON NW5