

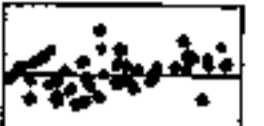







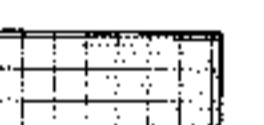
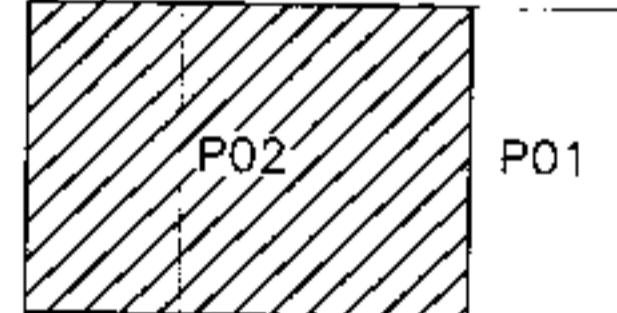
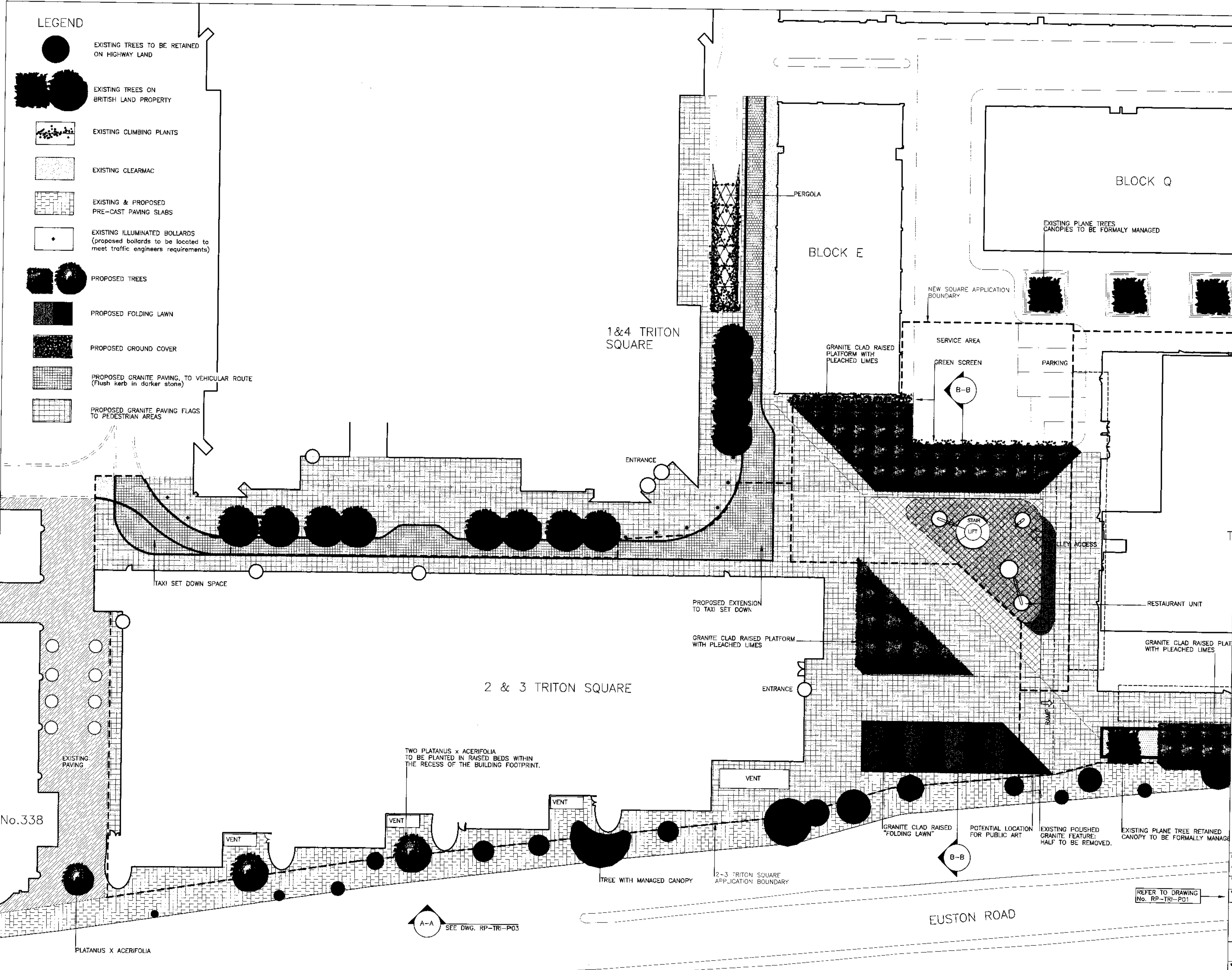


**LEGEND**

-  EXISTING TREES TO BE RETAINED ON HIGHWAY LAND
-  EXISTING TREES ON BRITISH LAND PROPERTY
-  EXISTING CLIMBING PLANTS
-  EXISTING CLEARMAC
-  EXISTING & PROPOSED PRE-CAST PAVING SLABS
-  EXISTING ILLUMINATED BOLLARDS (proposed bollards to be located to meet traffic engineers requirements)
-  PROPOSED TREES
-  PROPOSED FOLDING LAWN
-  PROPOSED GROUND COVER
-  PROPOSED GRANITE PAVING, TO VEHICULAR ROUTE (Flush kerb in darker stone)
-  PROPOSED GRANITE PAVING FLAGS TO PEDESTRIAN AREAS

BOLLARDS TO BE LOCATED TO TRAFFIC ENGINEERS LAYOUT



Revisions with date  
 A. ADDITION OF PODIUM CANOPY 16.4.99 & ASSOCIATED LANDSCAPE.

*m12/14x/A*  
**D9904132R1**

project REGENTS PLACE  
 client THE BRITISH LAND COMPANY  
 architect SHEPPARD ROBSON  
 engineer OVE ARUP AND PTNS  
 Edwards Gale  
 Chartered Landscape Architects  
 210 The Broadway  
 50 Westminster Bridge Road  
 London SE1 7DY  
 Tel: 0171 721 7464  
 Fax: 0171 723 7465  
 E-mail: edwards@edgale.co.uk

**2&3 TRITON SQUARE  
 DETAILED LANDSCAPE PLAN**  
 scale 1:250 date JAN 99

No.338

A-A SEE DWG. RP-TRI-P03

REFER TO DRAWING No. RP-TRI-P01

EUSTON ROAD



CLADDING 2&3 TRITON SQUARE

Notes:  
South Facade  
Double/Triple glazed Structural Silicone Glazing System (S.S.G.) with Polyester Powder Coated (P.P.C.) spandrel panels.  
Cast SS brackets to support SS maintenance walkways and aluminium or stone louvre 'screen' with P.P.C. extruded aluminium vertical support framework

East Facade  
Double glazed S.S.G. system with P.P.C. aluminium spandrel panels at slab edges. Glazing wall supported by vertical bow string cable structure. Steel brackets to support maintenance walkways.  
Part mechanically operated aluminium louvre screen fixed to P.P.C. extruded aluminium support framework to match south wall.

North Facade  
Double glazed S.S.G. supported by horizontal bow string cable structure. Double glazed S.S.G. proprietary wall system to all other glazed areas.

West Facade  
Triple glazed S.S.G. climate wall with P.P.C. aluminium spandrel panels. External cast steel brackets to support SS maintenance walkways.

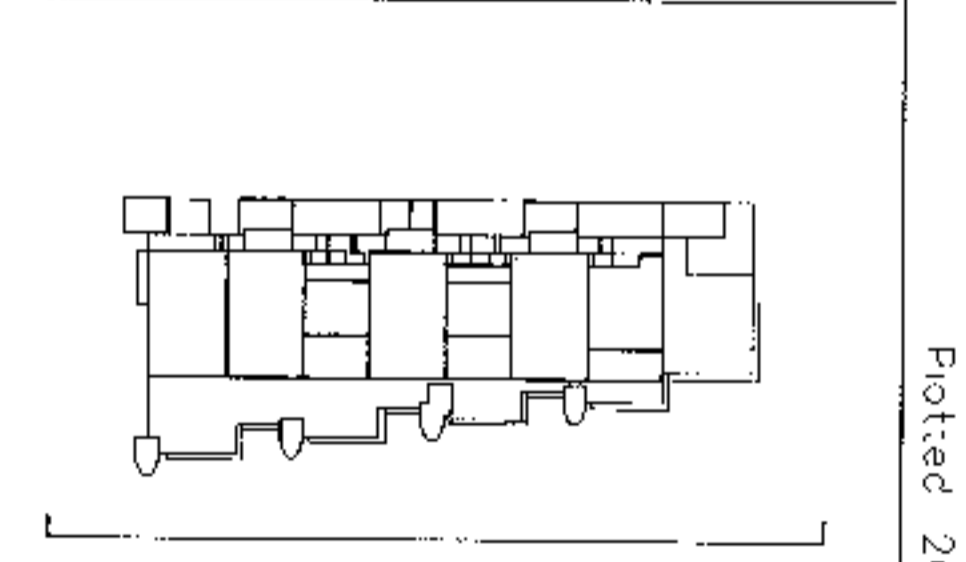
Cores  
Structural concrete core clad with reconstituted natural stone panels.

Columns  
Fair faced light grey reinforced concrete

Roof Plant  
P.P.C. aluminium rainscreen panels/louvres.

C	20.04.99	Issued as planning application amendment windows to south cores, further signage zones
H	26.03.99	Revised for STONE CLADDING tender issue stone coursing altered / core windows added
A	01.02.99	Revised for PLANNING APPLICATION

Issue	Date	Amendment
-------	------	-----------



**2&3 Triton Square**  
Regent's Place  
London NW1

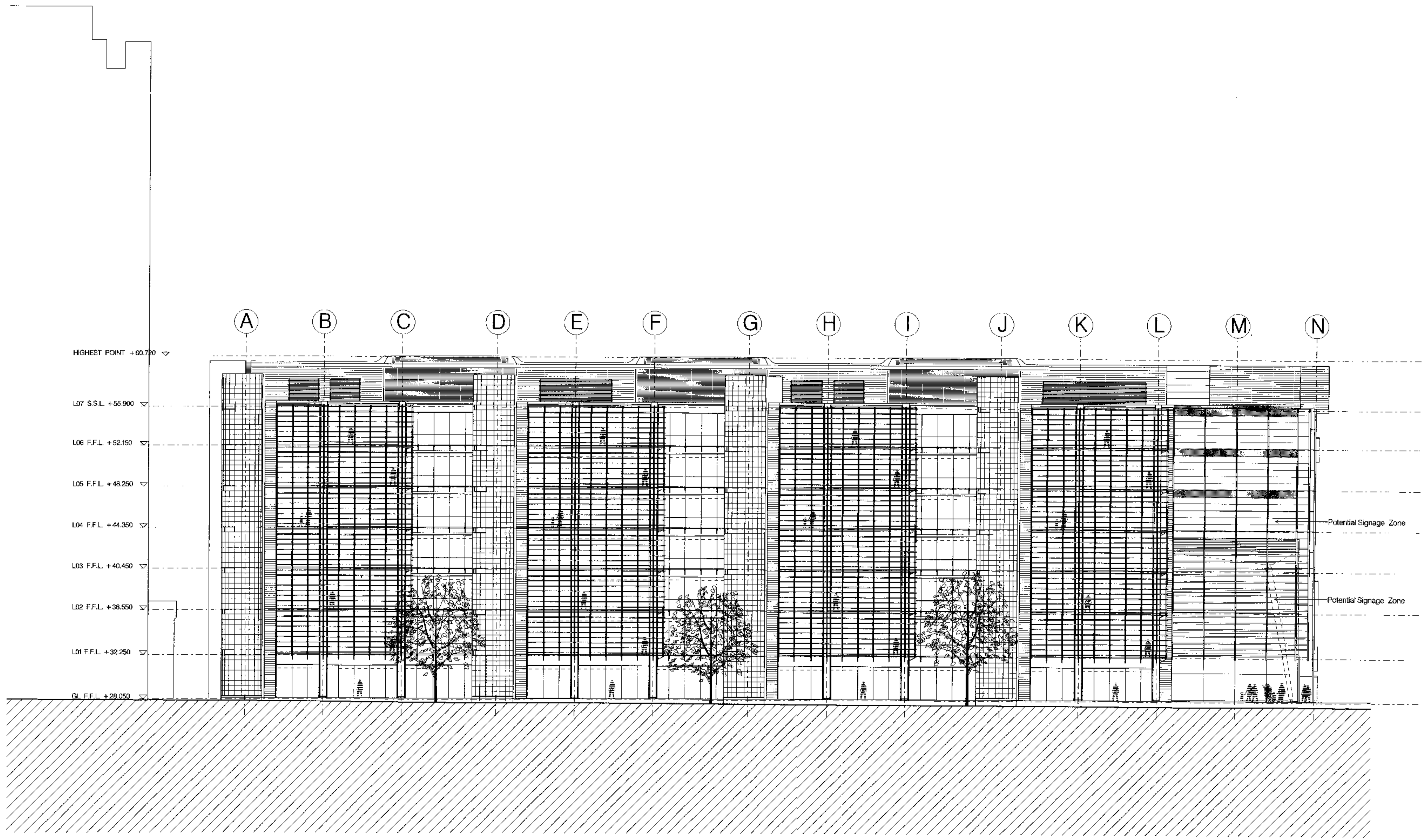
Sheppard Robson  
Architects Planners Interior Designers  
77 Parkway, Camden Town, London NW1 7PU  
Telephone 0171-485 4161 Fax 0171-267 3861

Drawing  
**SOUTH ELEVATION**  
M12/14 X/A  
**B9904132R1**

Scale	Date	Drawn	Checked	Approved
1:200 at A1	27.01.99			

Status  
**PLANNING**

Drawing No.	Rev.
1946_00_220	C



Plotted: 20-Apr-1999 10:43 Filename: P:\1946\00\00\_220.dlt



Notes:  
 CLADDING 2&3 TRITON SQUARE

**South Facade**  
 Double/triple glazed Structural Silicone Glazing System (S.S.G.) with Polyester Powder Coated (P.P.C.) spandrel panels.  
 Cast SS brackets to support SS maintenance walkways and aluminium or stone louvre 'screen' with P.P.C. extruded aluminium vertical support framework

**East Facade**  
 Double glazed S.S.G. system with P.P.C. aluminium spandrel panels at slab edges. Glazing wall supported by vertical bow string cable structure. Steel brackets to support maintenance walkways. Part mechanically operated aluminium louvre screen fixed to P.P.C. extruded aluminium support framework to match south wall.

**North Facade**  
 Double glazed S.S.G. supported by horizontal bow string cable structure. Double glazed S.S.G. proprietary wall system to all other glazed areas.

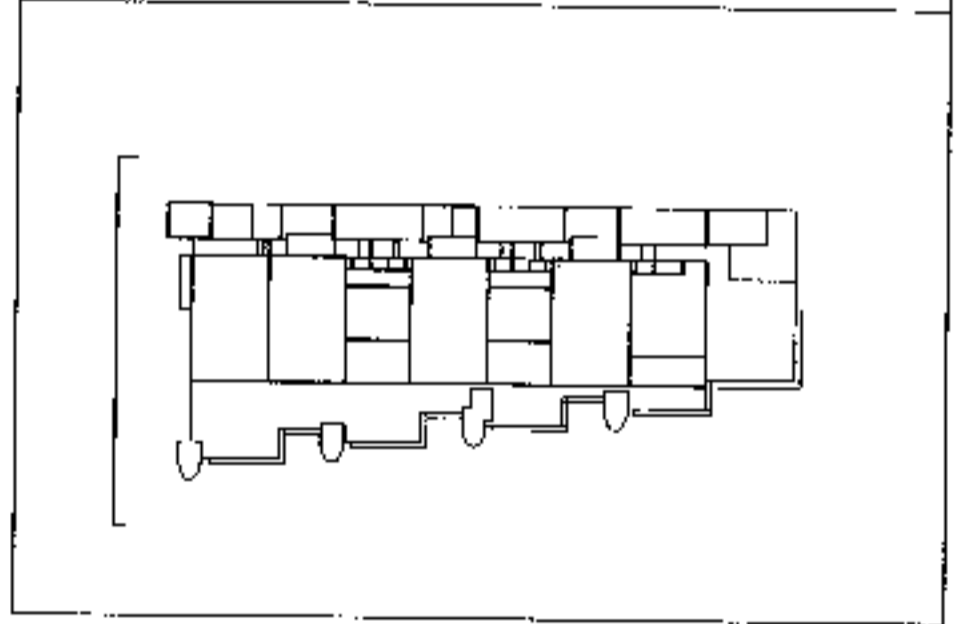
**West Facade**  
 Triple glazed S.S.G. climate wall with P.P.C. aluminium spandrel panels. External cast steel brackets to support SS maintenance walkways.

**Cores**  
 Structural concrete core clad with reconstituted/natural stone panels.

**Columns**  
 Fair faced light grey reinforced concrete

**Roof Plant**  
 P.P.C. aluminium rainscreen panels/louvres.

Issue	Date	Amendment
C	20.04.99	Issued as planning application amendment windows to south cores, further signage zones
B	26.03.99	Revised for STONE CLADDING tender issue
A	01.02.99	Revised for Planning Application



**2&3 Triton Square**  
 Regent's Place  
 London NW1

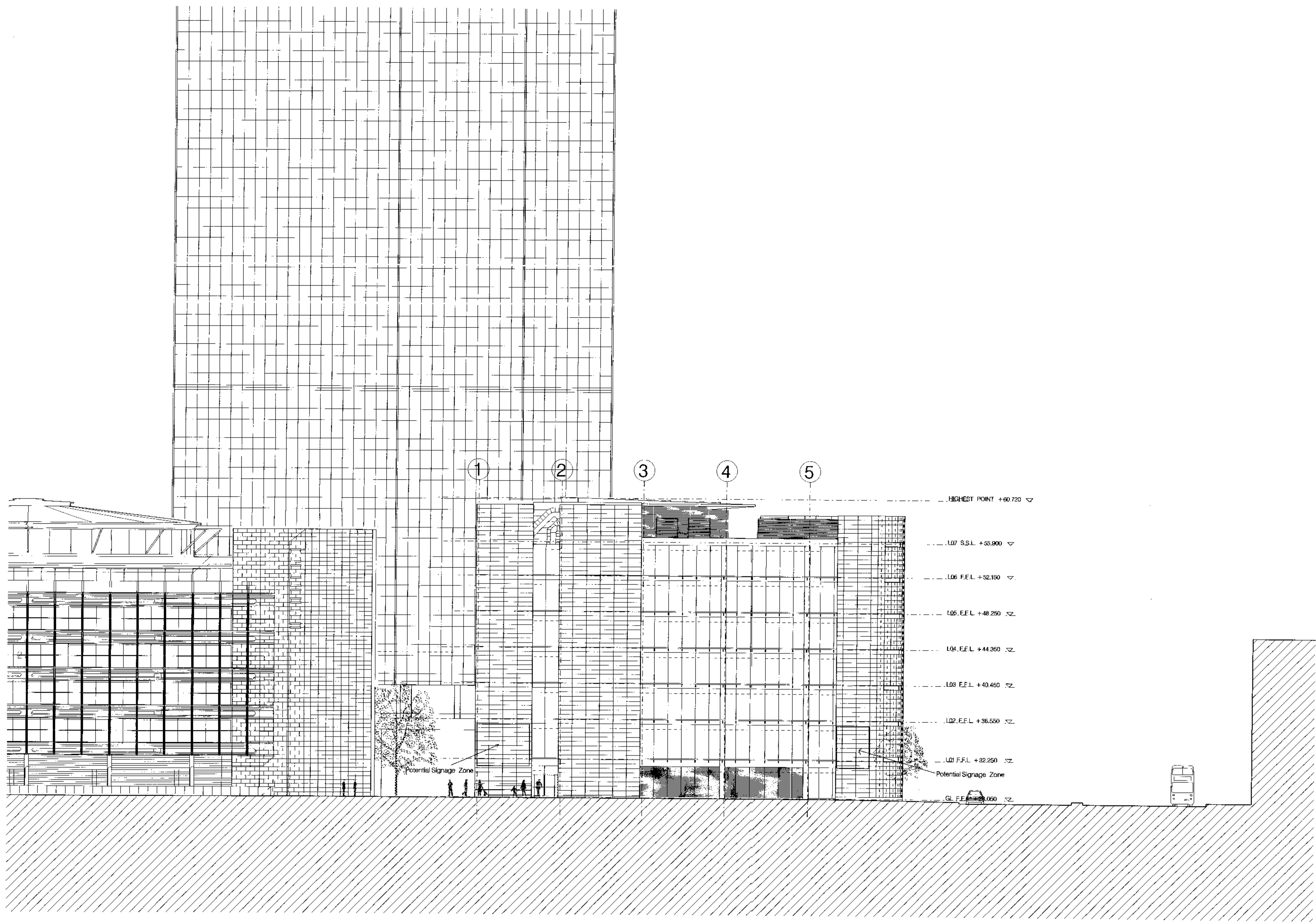
Sheppard Robson  
 Architects Planners Interior Designers  
 77 Parkway, Camden Town, London NW1 7PU  
 Telephone 0171-485 4161 Fax 0171-267 3861

Drawing  
**WEST ELEVATION**  
 M12 1/4 x/A  
 0904132R1

Scale	Date	Drawn	Checked	Approved
1/200	27.01.99	MJ		

Status  
**PLANNING**

Drawing No.	Rev.
1946_00_223	C



Plotfile: 20-APR-1999 10:48 Filetime: P:\1946\proj\00\_223.plt