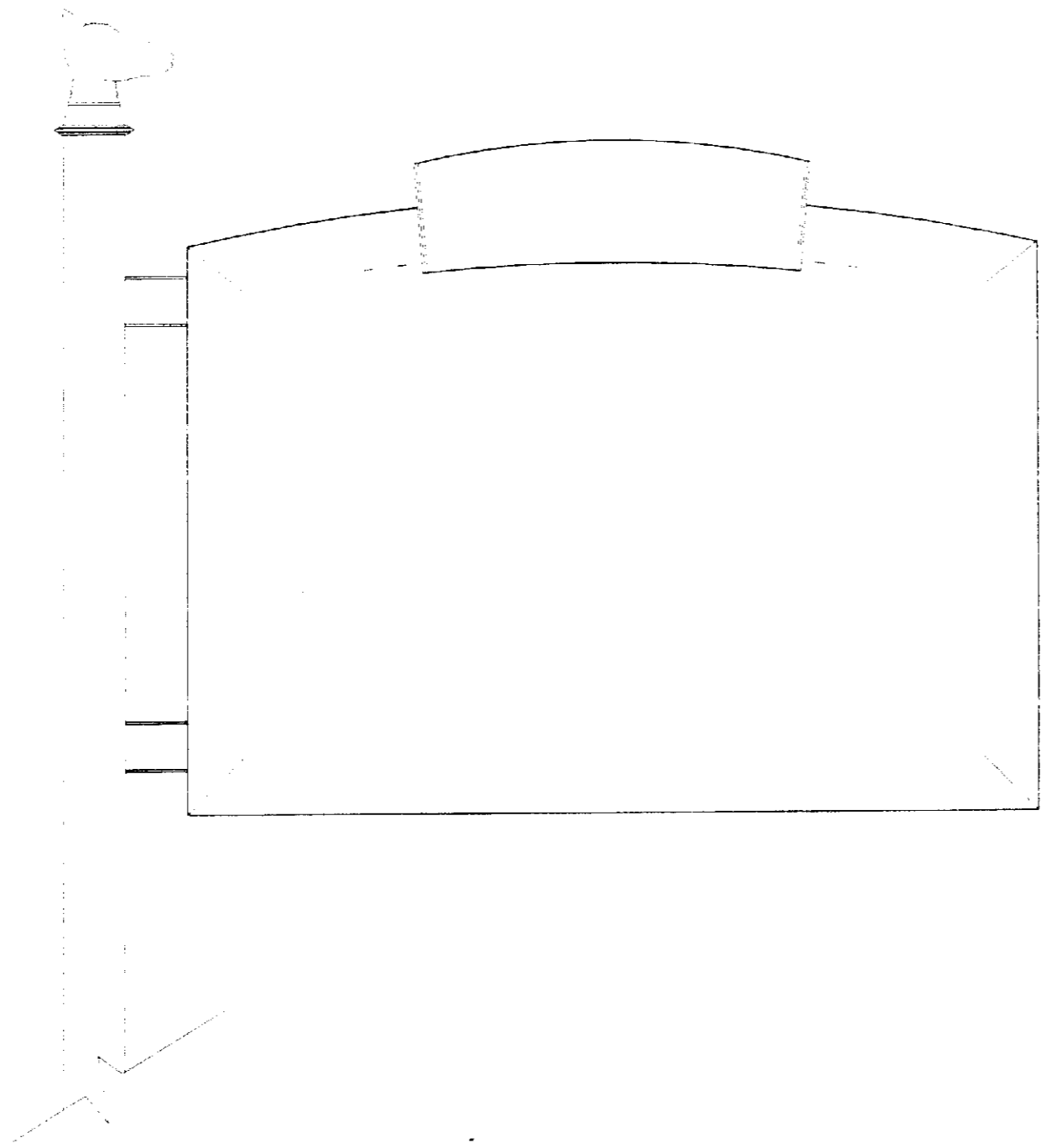


**Stables Market- Drawing List
March 2001**

Dwg. #	Description	Submitted to whom	Date
ST001-B	Elevation of Sign Design	Stables Market Belinda Magee Joanna Parker	APRIL, 2001 May 1, 2001 May 30, 2001
ST002-B	Sectional, Construction Info.		
ST003-B	Lighting Options A&B		
ST004-B	Detail of Logo Box		
ST005-B	Sign Information, Elevational		
ST006-B	Site Dwg of Sign Locations		
ST007-B	Plan of Pole A; including electrical info Detail Ref: EL001		
ST008-A	Plan of Pole D-E, including electrical info Detail Ref: EL002, EL003		
ST009-A			
ST010-A			
ST011			
ST012			
ST013	Elevation		
ST014	Elevation Detail, Pole A-B		
ST015	Elevation Detail, Pole B-C		
ST016	Elevation Detail, Pole C-D		
ST017	Elevation Detail, Pole D-E		
ST018	Elevation Detail, Pole E-F		
ST019	Sign Location Drawing Rear Elevation		
ST020	Typical Section of Wall & Sign Pole A		
ST021	Typical Section of Wall & Sign Pole F		

LEX0100430

05H0000X37



GENERAL NOTES:

- This drawing is the rough guidance for the sign maker.
- exact dimensions of metal gauge is an estimate, and is up to the discretion of the sign maker.
- lighting fixtures, and their dimensions will be left to the discretion of the lighting specialist.

CLIENT:
STABLES MARKETS
CAMDEN TOWN

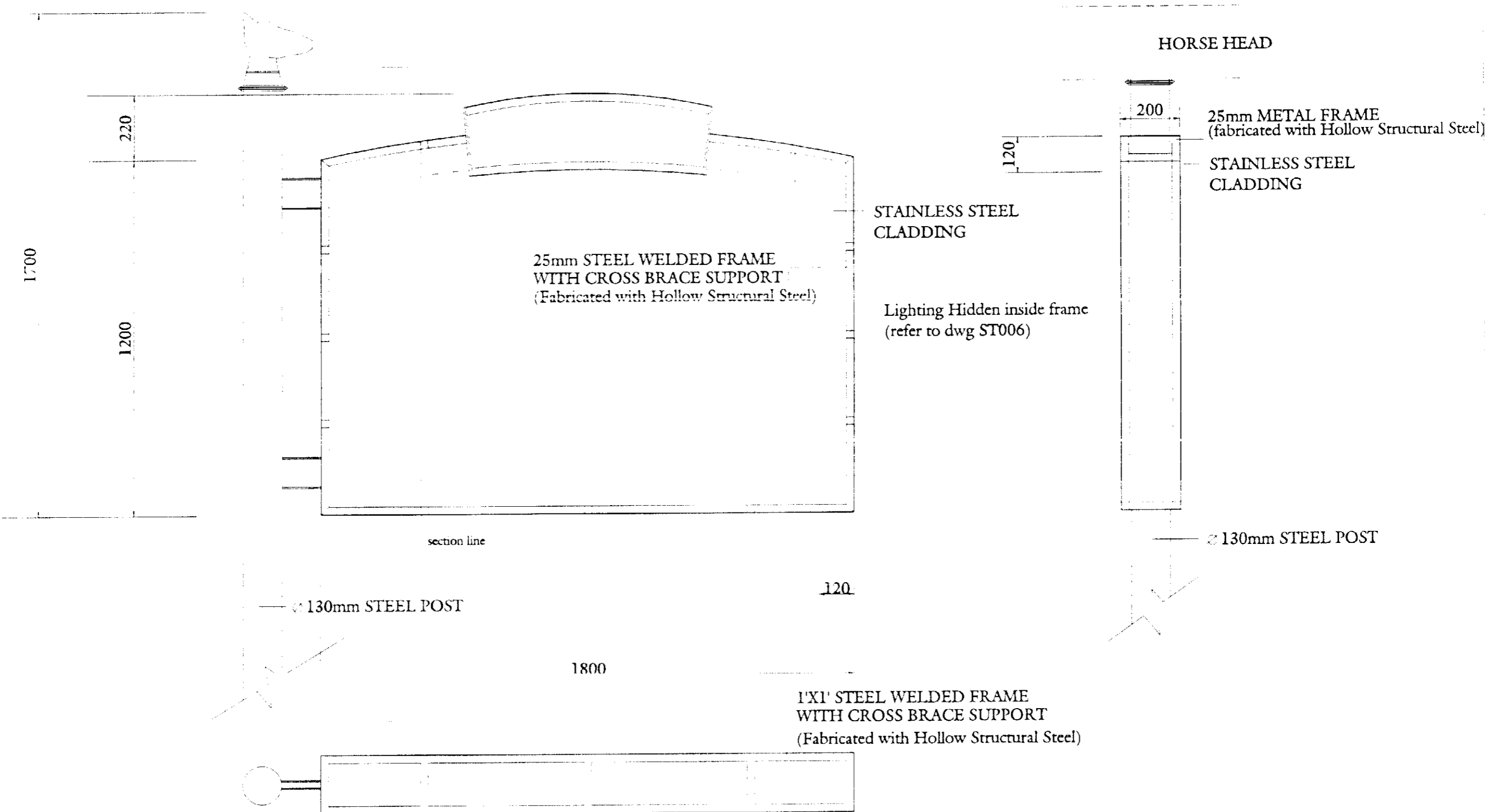
Stephen Levrant Heritage Architecture
363 Heritage Architecture
West Hampstead, London
NW6 1LP
(tel) 0207 435 7502 (fax) 0207 794 9712

SCALE:
1:20

DWG No.
ST001-B

Front Elevation

Lex0100420



GENERAL NOTES:

- This drawing is the rough guidance for the sign maker.
- exact dimensions of metal gauge is an estimate, and is up to the discretion of the sign maker.
- lighting fixtures, and their dimensions will be left to the discretion of the lighting specialist.

CLIENT:
 STABLES MARKETS
 CAMDEN TOWN

Stephen Levrant Heritage Architecture
 363 West End Lane
 West Hampstead, London
 NW6 1LP
 (tel) 0207 435 7502 (fax) 0207 794 9712

SCALE: 1:20 DWG No. ST002-B

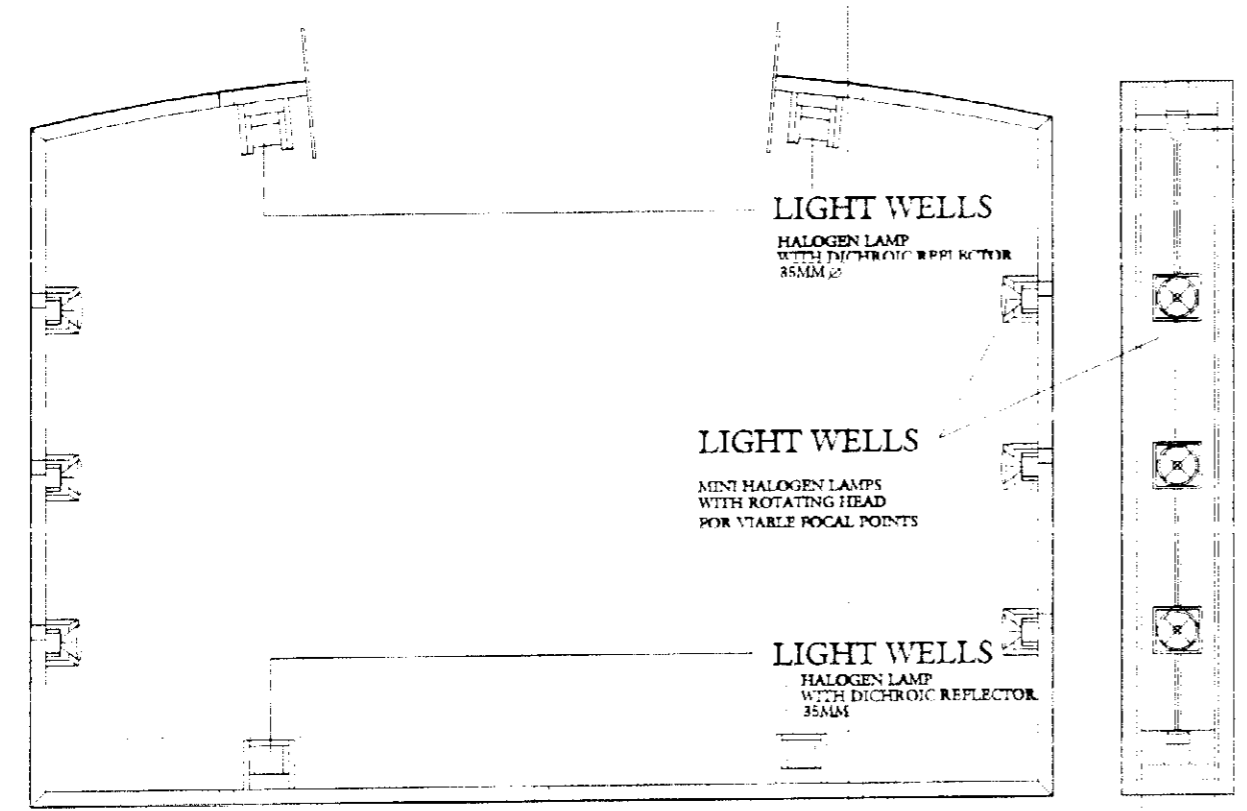
Construction Section



LIGHTED BOX
FITTED IN AND HELD TO FRAME, SEE DETAILED DWG.



LIGHTED BOX
FITTED IN AND HELD TO FRAME, SEE DETAILED DWG.



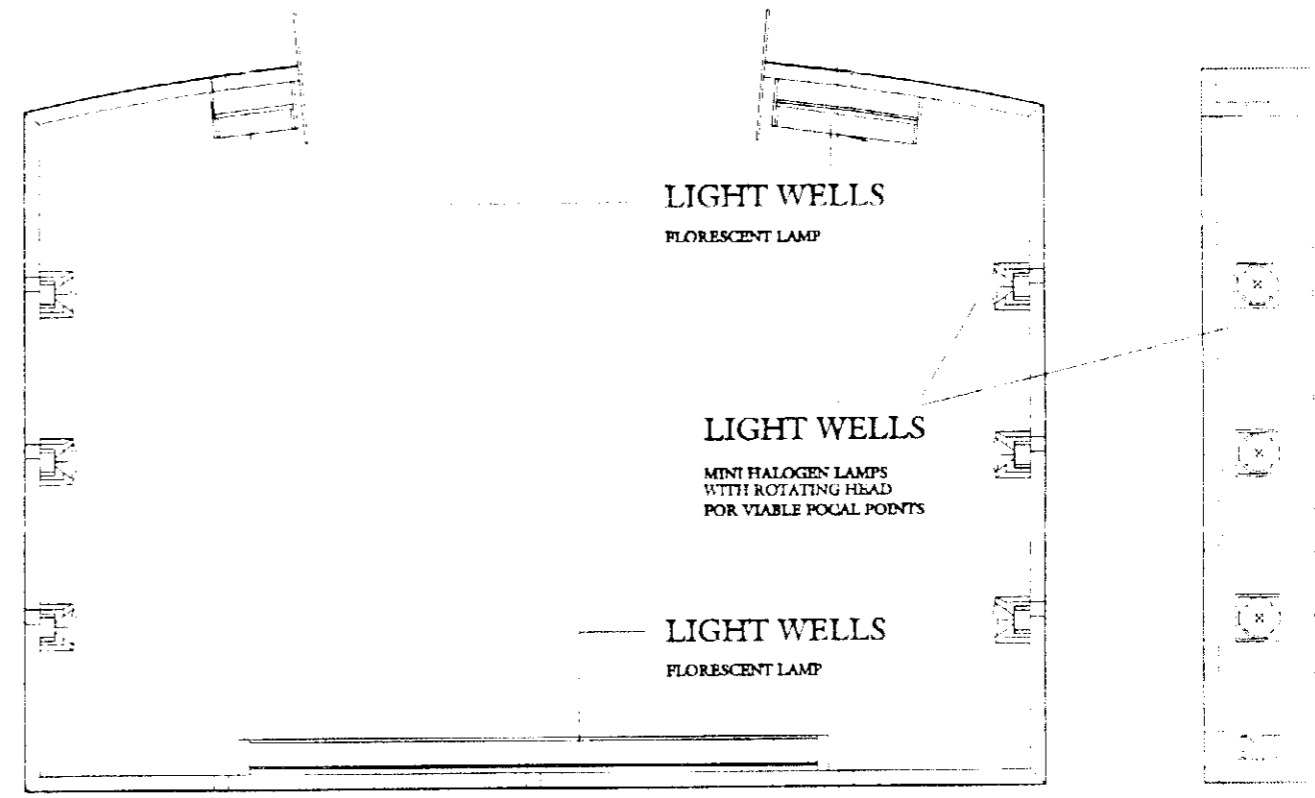
LIGHT WELLS
HALOGEN LAMP
WITH DICHRIC REFLECTOR
35MM

LIGHT WELLS
MINI HALOGEN LAMPS
WITH ROTATING HEAD
FOR VIABLE FOCAL POINTS

LIGHT WELLS
HALOGEN LAMP
WITH DICHRIC REFLECTOR
35MM

section line

OPTION A



LIGHT WELLS
FLORESCENT LAMP

LIGHT WELLS
MINI HALOGEN LAMPS
WITH ROTATING HEAD
FOR VIABLE FOCAL POINTS

LIGHT WELLS
FLORESCENT LAMP

section line

OPTION B

GENERAL NOTES:

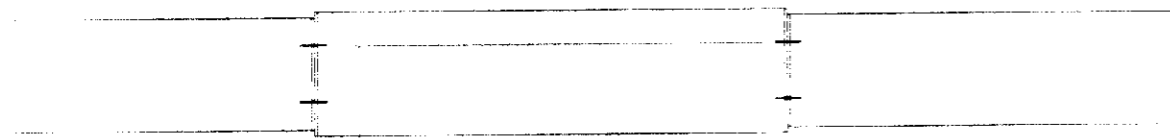
- This drawing is the rough guidance for the sign maker.
- exact dimensions of metal gauge is an estimate, and is up to the discretion of the sign maker.
- lighting fixtures, and their dimensions will be left to the discretion of the lighting specialist.

CLIENT:
STABLES MARKETS
CAMDEN TOWN

SCALE: 1:20
DWG No. ST003-B

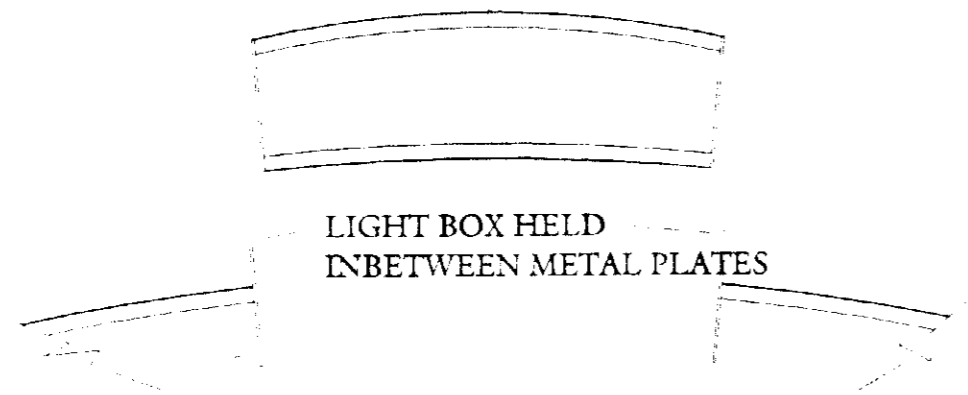
Lighting Options A&B

Stephen Levrant Heritage Architecture
363 West End Lane
West Hampstead, London
NW6 1LP
(tel) 0207 435 7502 (fax) 0207 794 9712



METAL PINS TO HOLD
CENTRE LIGHT BOX

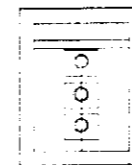
LOGO BACKLIT



LIGHT BOX HELD
IN BETWEEN METAL PLATES

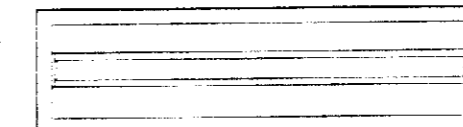
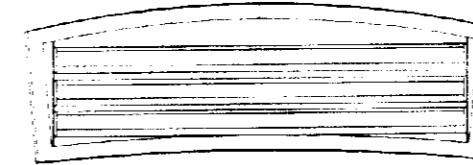
DETAIL OF ASSEMBLY

SELF CONTAINED LIGHT BOX
1'X1' STEEL FRAME, CLAD IN STAINLESS STEEL
LETTERS CUT FROM METAL, AND BACKLIT



LIGHT SOURCE
CONTAINED IN
BOX.

FLORESCENT TUBES
26mm



SECTION, SHOWING LIGHTS AND CONSTRUCTION

GENERAL NOTES:

- This drawing is the rough guidance for the sign maker.
- exact dimensions of metal gauge is an estimate, and is up to the discretion of the sign maker.
- lighting fixtures, and their dimensions will be left to the discretion of the lighting specialist.

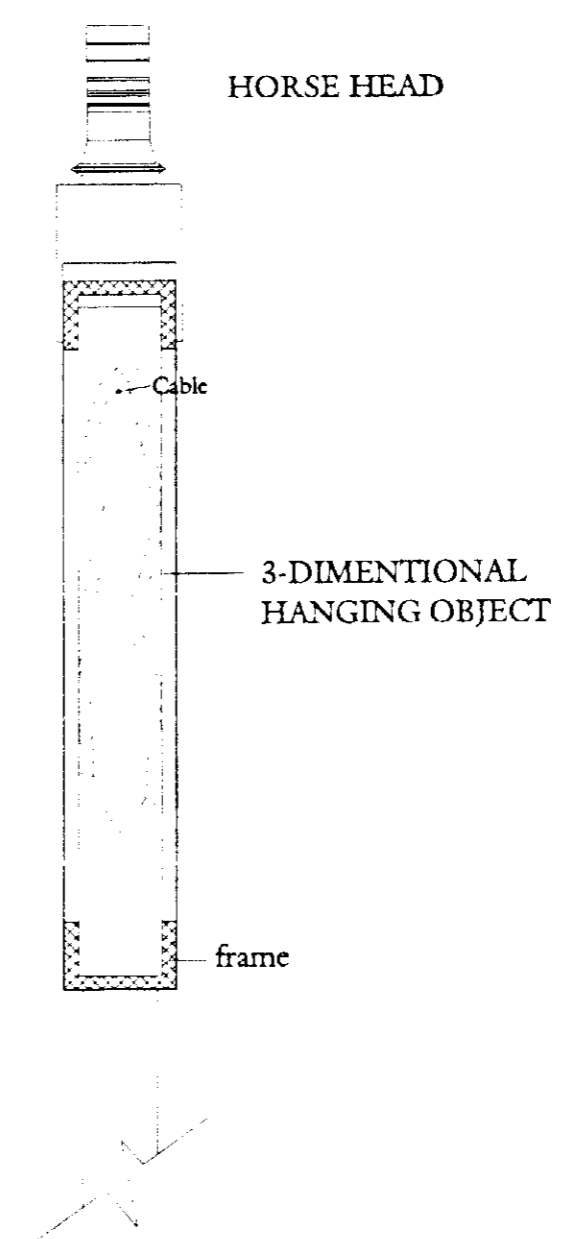
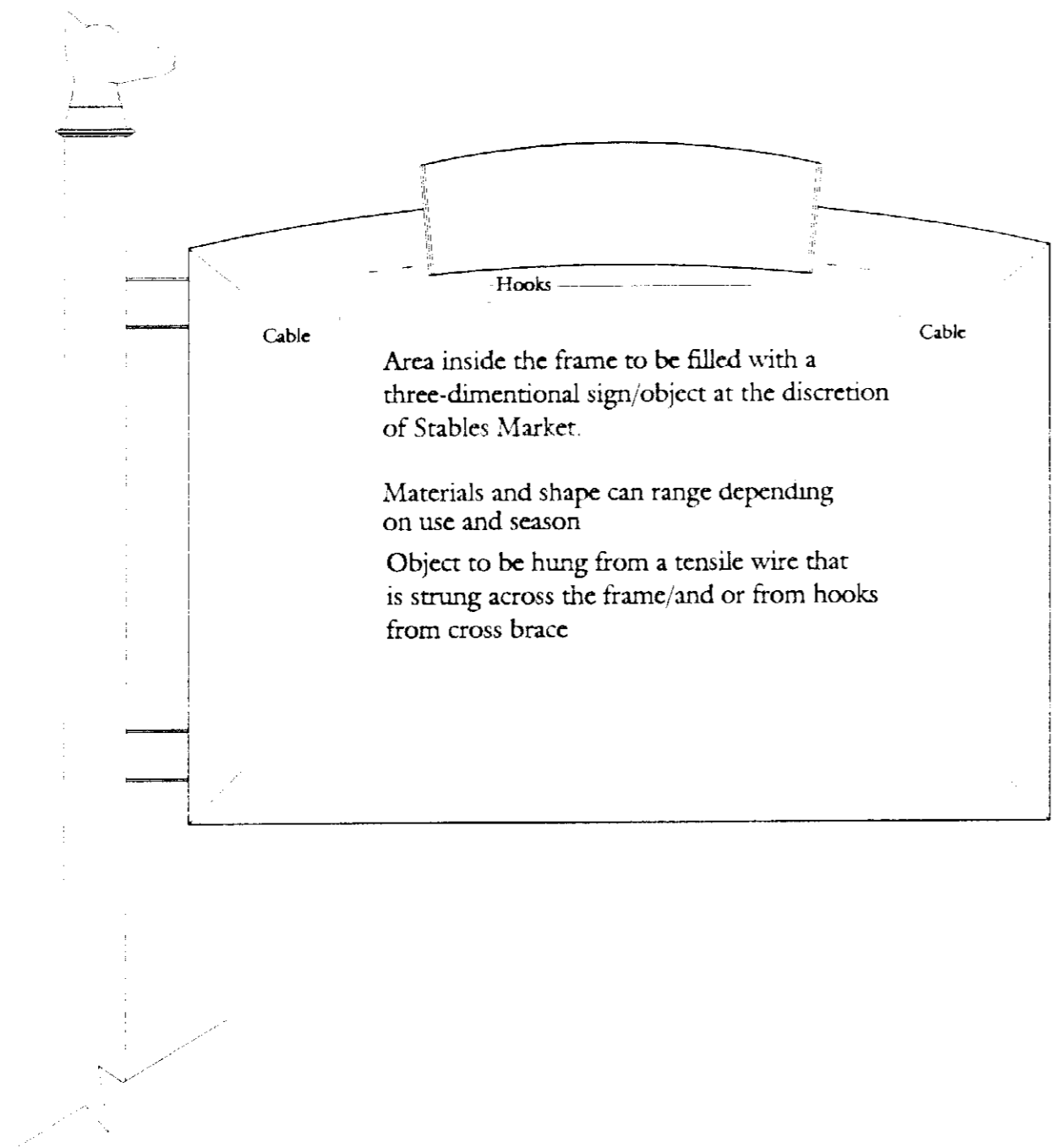
CLIENT:
STABLES MARKETS
CAMDEN TOWN

Stephen Levrant Heritage Architecture
363 West End Lane
West Hampstead, London
NW6 1LP
(tel) 0207 435 7502 (fax) 0207 794 9712

SCALE:
1:20

DWG No.
ST004-B

Detail of LOGO Box



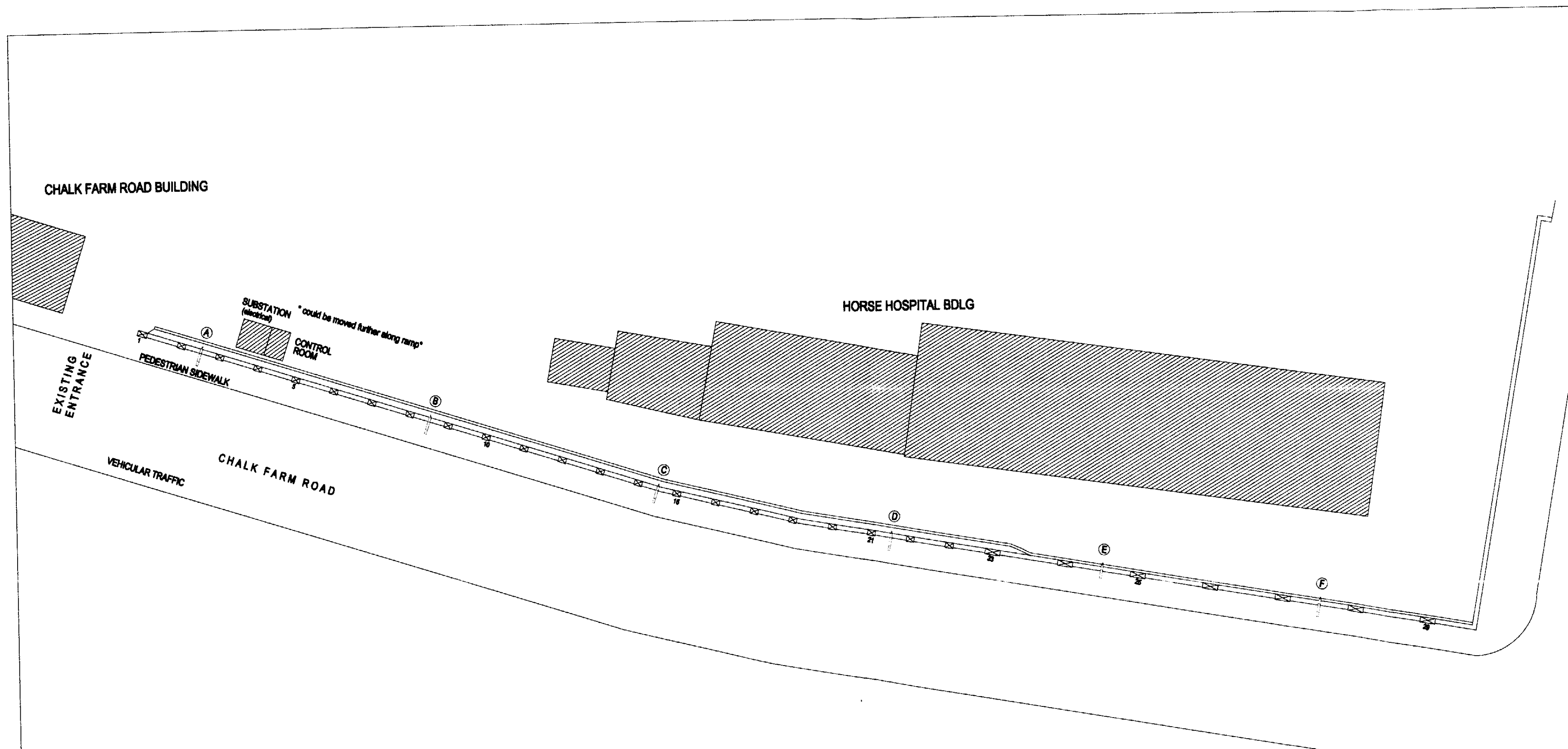
GENERAL NOTES:
 -This drawing is the rough guidance for the sign maker.
 -exact dimensions of metal gauge is an estimate, and is up to the discretion of the sign maker.
 -lighting fixtures, and their dimensions will be left to the discretion of the lighting specialist.

CLIENT:
 STABLES MARKETS
 CAMDEN TOWN

Stephen Levrant Heritage Architecture
 363 Heritage Architecture
 West Hampstead, London
 NW6 1LP
 (tel) 0207 435 7502 (fax) 0207 794 9712

SCALE: 1:20
DWG No. ST005-B

SIGN INFORMATION



GENERAL NOTES:
 TYPICAL SECTION THROUGH SITE REFER TO DWGS:
 ST010-A (pole A); ST011 (pole F)
 DISTANCE BETWEEN SIGNS IS:
 A-B, B-C, C-D O/C = 24, 420mm
 D-E O/C = 21,830mm
 E-F O/C = 22,561mm

CLIENT:
 STABLES MARKETS
 CAMDEN TOWN

SCALE:
 1:500

DWG No.
 ST006-B

SITE PLAN
 SIGN LOCATION DRAWING

KEY
 / SIGN POST, OVERHANGING WALL

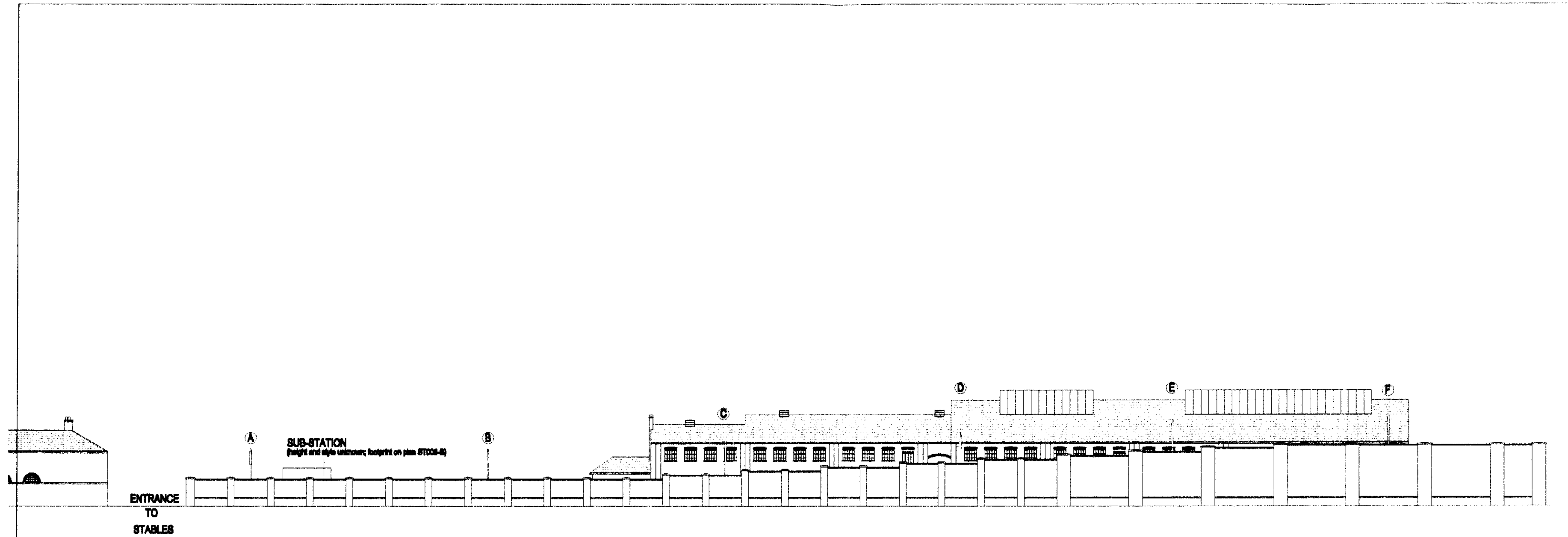
Stephen Levrant Heritage Architecture
 363 Heritage Architecture
 West Hampstead, London
 NW8 1LP
 (tel) 0207 435 7502 (fax) 0207 794 9712

Lex 0100430

Lex 0100430

015 4110 0100

Lex 0100430

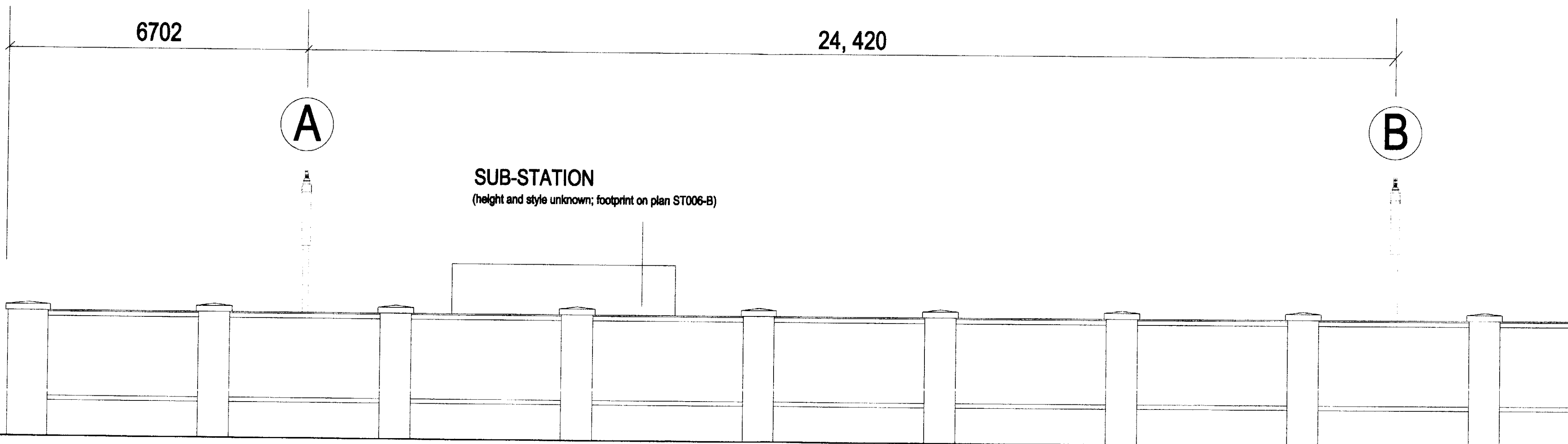


GENERAL NOTES: TYPICAL SECTION THROUGH SITE REFER TO DWGS: ST010-A (pole A); ST011 (pole F) DISTANCE BETWEEN SIGNS IS: A-B, B-C, C-D O/C = 24, 420mm D-E O/C = 21,830mm E-F O/C = 22,561mm	CLIENT: STABLES MARKETS CAMDEN TOWN		KEY SIGN POST, OVERHANGING WALL		Stephen Laurant Heritage Architecture 363 Heritage Architecture West Hampstead, London NW6 1LP (tel) 0207 435 7502 (fax) 0207 794 9712
	SCALE: 1:500	DWG No. ST013	ELEVATION SIGN LOCATION DRAWING	PRELIMINARY	

Lex0100430

Lex0100430

Lex0100430



**ENTRANCE
TO
STABLES**

GENERAL NOTES:

- Typical Section Dwgs: Pole A(ST010-A); Pole F (ST011)
- refer to dwg ST008-A for complete layout of poles
- lighting fixtures, and their dimensions will be left to the discretion of the lighting specialist.
- distance between signs: A-B, B-C, C-D; O/C = 24, 420mm
- D-E; O/C = 21,830mm, E-F; O/C = 22,561mm

CLIENT:
STABLES MARKETS
CAMDEN TOWN

Stephen Levrant Heritage Architecture
363 West End Lane
West Hamptead, London
NW6 1LP
(tel) 020 7435 7502 (fax)020 7794 9712

SCALE:
1:100

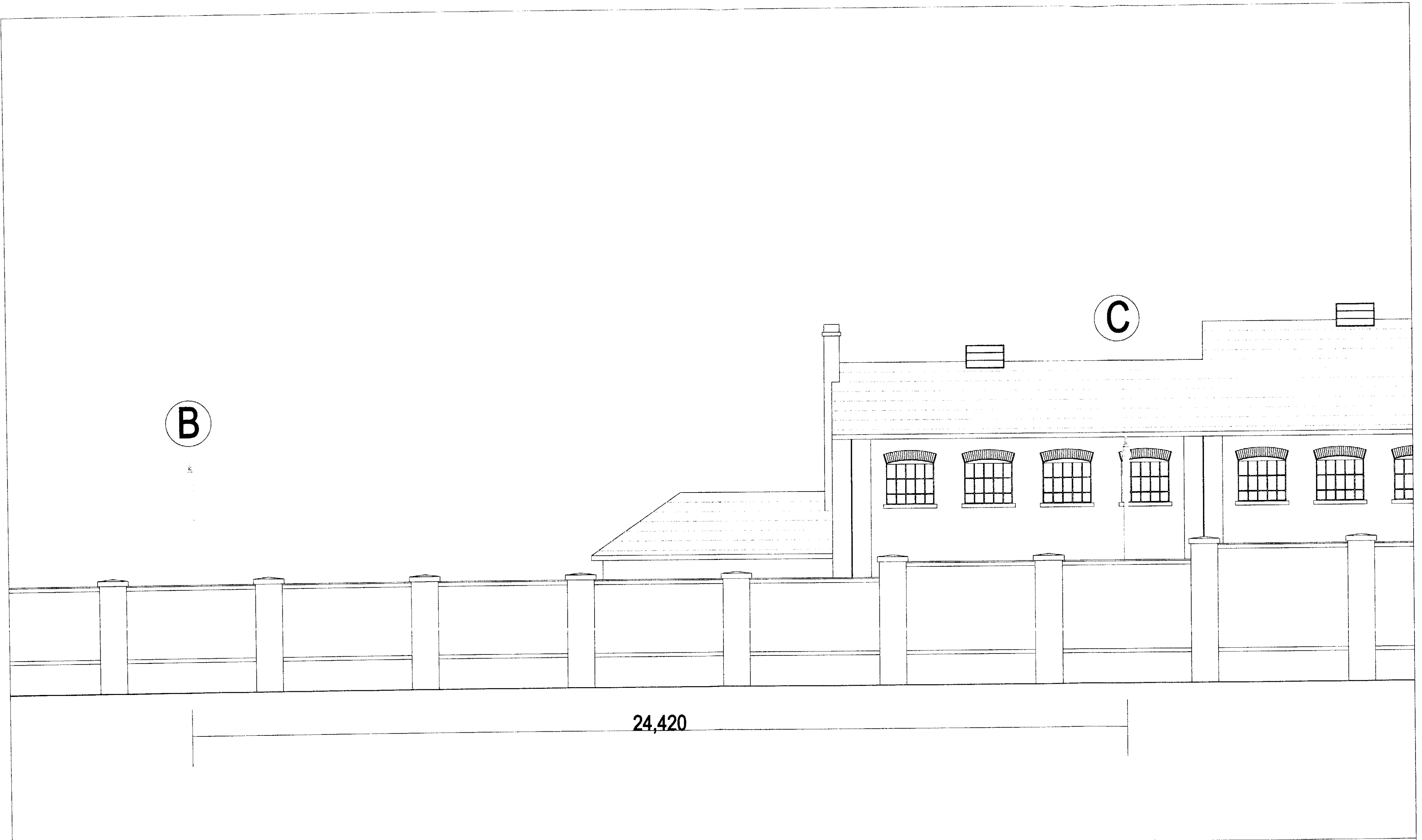
Dwg. No.
ST014

ELEVATION DETAIL
POLE A-B

Lex0100430

Lex0100430

Lex0100430



24,420

GENERAL NOTES:
 -Typical Section Dwgs: Pole A(ST010-A); Pole F (ST011)
 -refer to dwg ST008-A for complete layout of poles
 -lighting fixtures, and their dimensions will be left to the discretion of the lighting specialist.
 -distance between signs: A-B, B-C, C-D; O/C = 24, 420mm
 D-E; O/C = 21,830mm, E-F; O/C = 22,561mm

CLIENT:
 STABLES MARKETS
 CAMDEN TOWN

Stephen Levrant Heritage Architecture
 363 West End Lane
 West Hamptead, London
 NW6 1LP
 (tel) 020 7435 7502 (fax)020 7794 9712

SCALE:
 1:100

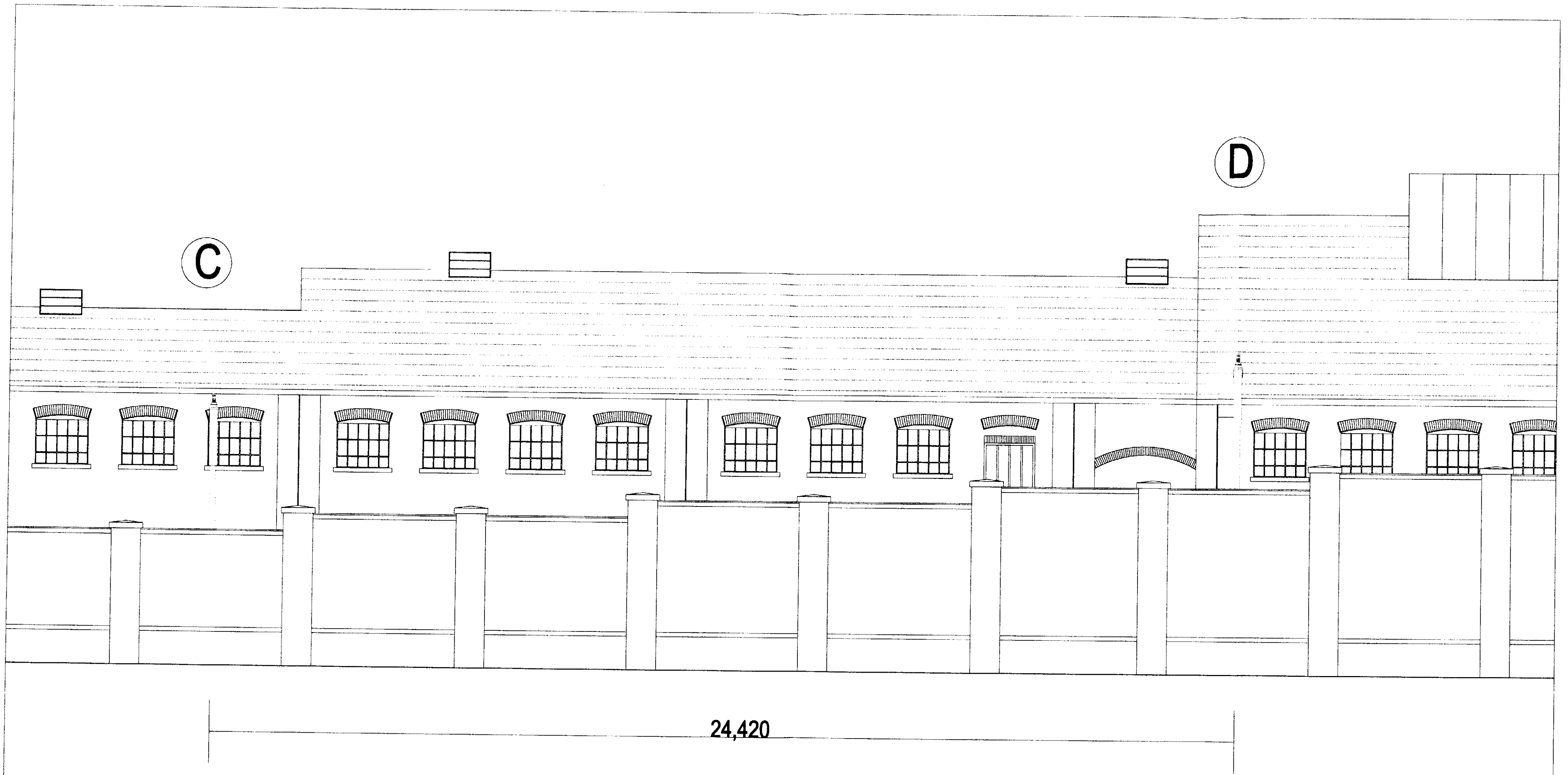
Dwg. No.
 ST015

ELEVATION DETAIL
 POLE B - C

LEX0100430

LEX0100430

LEX0100430



GENERAL NOTES:
 -Typical Section Dwgs: Pole A(ST010-A); Pole F (ST011)
 -refer to dwg ST008-A for complete layout of poles
 -lighting fixtures, and their dimensions will be left to the discretion of the lighting specialist.
 -distance between signs: A-B, B-C, C-D; O/C = 24, 420mm
 D-E; O/C = 21,830mm, E-F; O/C = 22,561mm

CLIENT:
 STABLES MARKETS
 CAMDEN TOWN

SCALE:
 1:100

Dwg. No.
 ST016

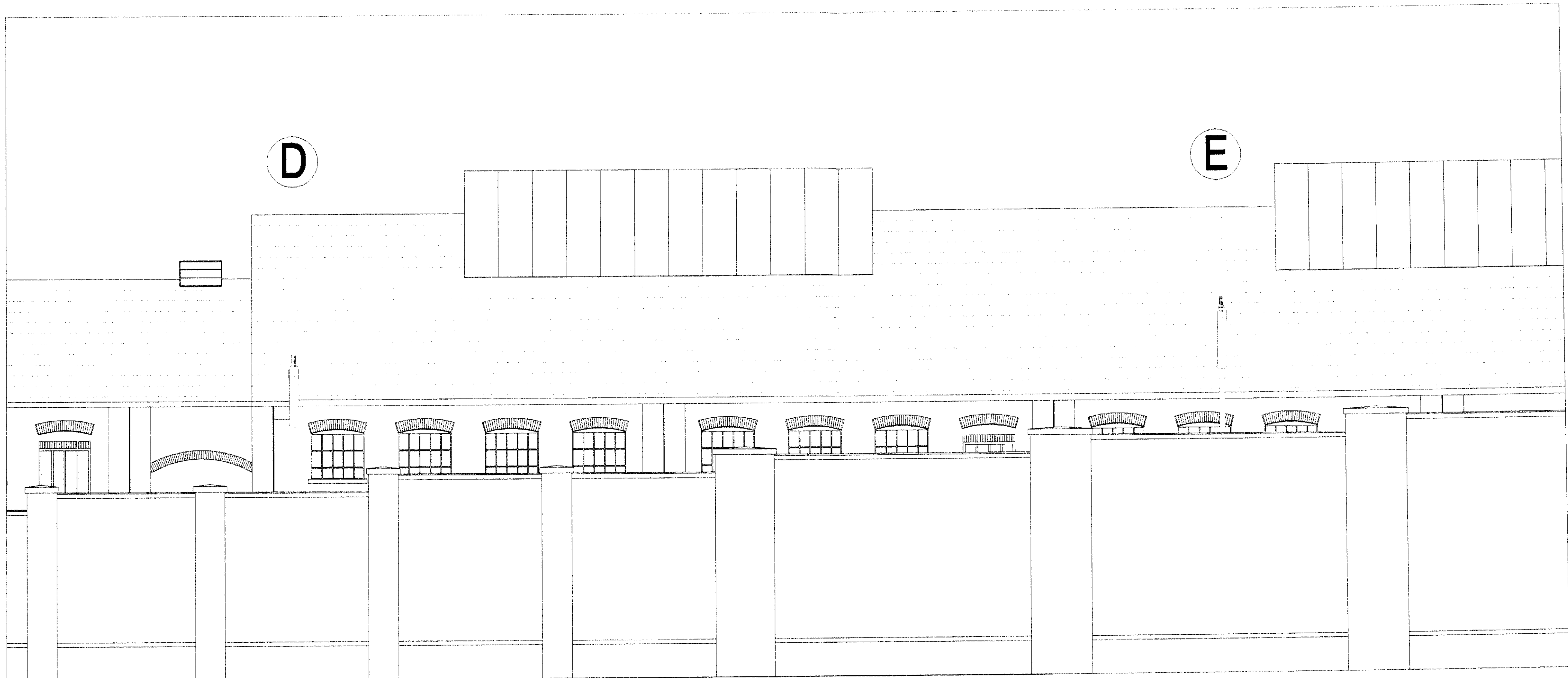
ELEVATION DETAIL
 POLE C - D

Stephen Levrant Heritage Architecture
 363 West End Lane
 West Hamptead, London
 NW6 1LP
 (tel) 020 7435 7502 (fax)020 7794 9712

LEX0100430

LEX0100430

LEX0100430



21,830

GENERAL NOTES:

- Typical Section Dwgs: Pole A(ST010-A); Pole F (ST011)
- refer to dwg ST008-A for complete layout of poles
- lighting fixtures, and their dimensions will be left to the discretion of the lighting specialist.
- distance between signs: A-B, B-C, C-D; O/C = 24, 420mm
- D-E; O/C = 21,830mm, E-F; O/C = 22,561mm

CLIENT:
STABLES MARKETS
CAMDEN TOWN

Stephen Levrant Heritage Architecture
 363 West End Lane
 West Hampstead, London
 NW6 1LP
 (tel) 020 7435 7502 (fax)020 7794 9712

SCALE:
 1:100

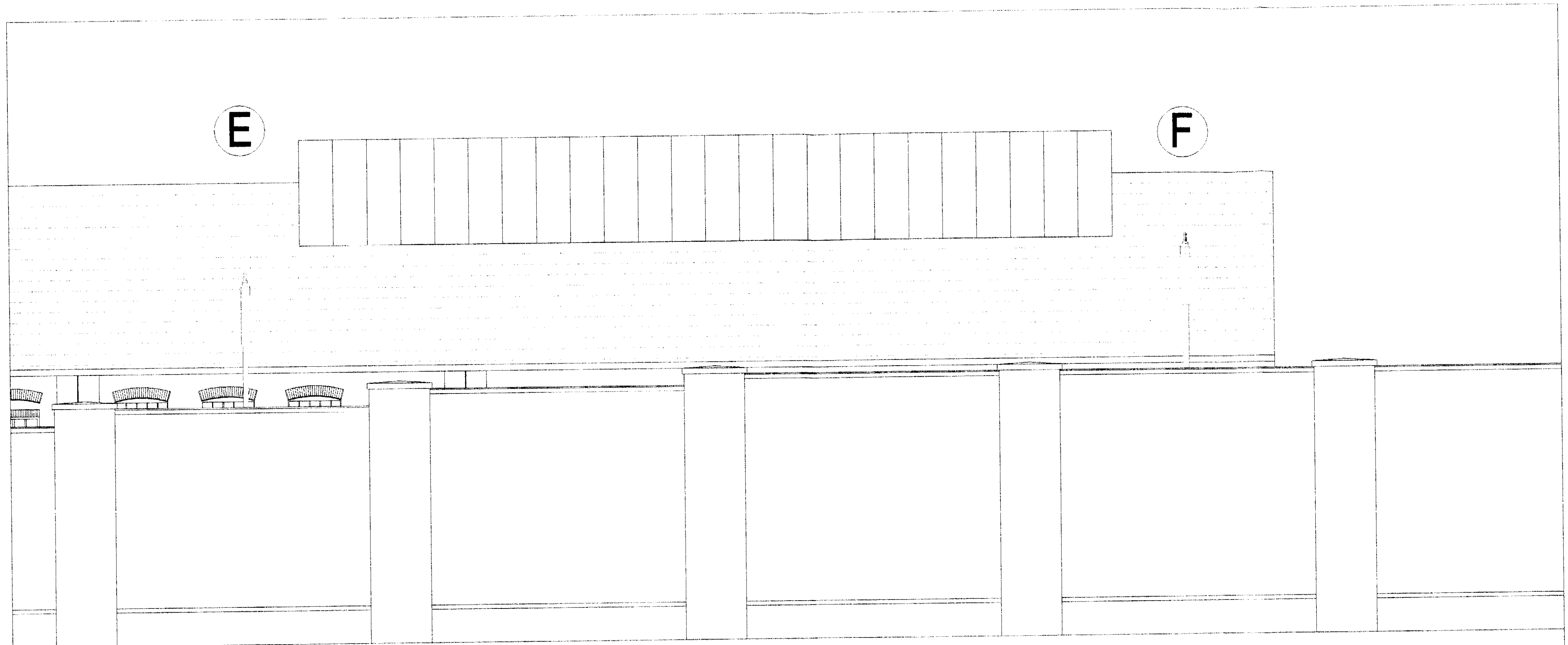
Dwg. No.
 ST017

ELEVATION DETAIL
 POLE D - E

Lex0100430

Lex0100430

Lex0100430



22,561

GENERAL NOTES:

-Typical Section Dwgs: Pole A(ST010-A); Pole F (ST011)
 -refer to dwg ST008-A for complete layout of poles

-lighting fixtures, and their dimensions will be left to the discretion of the lighting specialist.

-distance between signs: A-B, B-C, C-D; O/C = 24, 420mm
 D-E; O/C = 21,830mm, E-F; O/C = 22,561mm

CLIENT:
STABLES MARKETS
CAMDEN TOWN

Stephen Levrant Heritage Architecture
 363 West End Lane
 West Hamptead, London
 NW6 1LP
 (tel) 020 7435 7502 (fax)020 7794 9712

SCALE:
 1:100

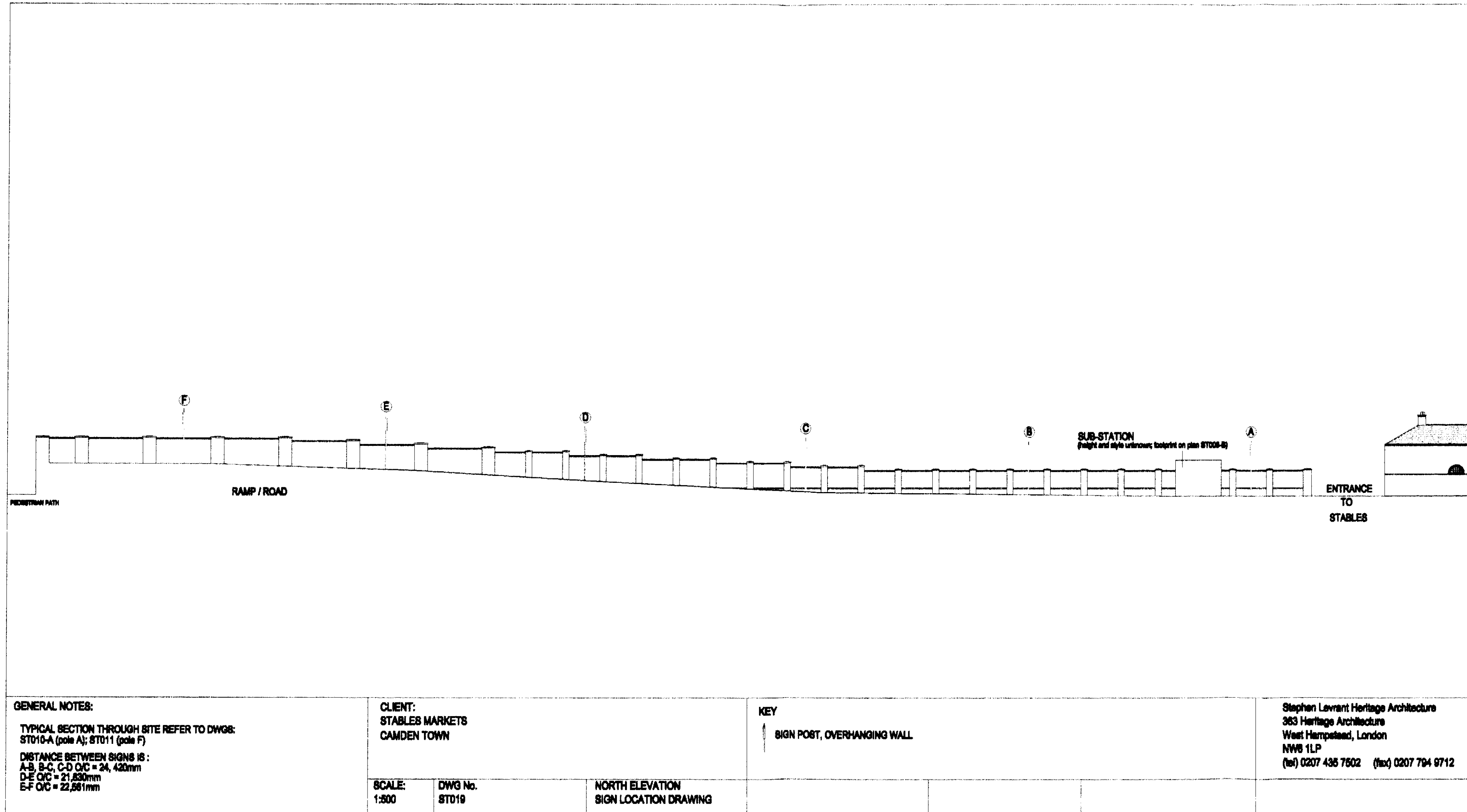
Dwg. No.
 ST018

ELEVATION DETAIL
POLE E - F

Lex0100430

Lex0100430

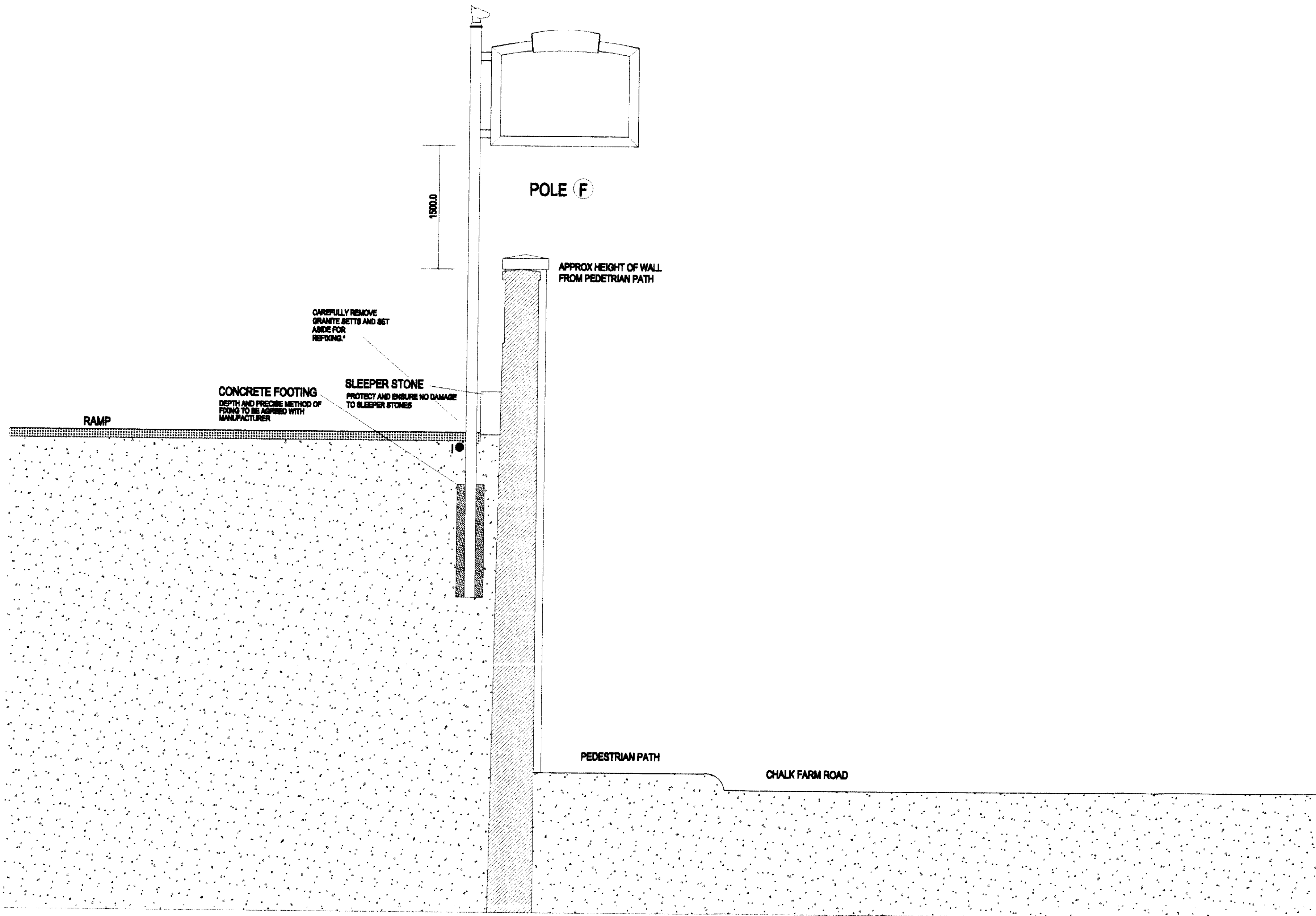
Lex 0100430



Lex0100430

Lex 0100430

Lex0100430



GENERAL NOTES:
 -This drawing is the rough guidance for the sign maker.
 -exact dimensions of metal gauge is an estimate, and is up to the discretion of the sign maker
 -lighting fixtures, and their dimensions will be left to the discretion of the lighting specialist
 *SETTS to be removed carefully and replace as existing. HOWEVER, no setts shall be broken to make place for the 130mm poles. After installation only one sett should be missing.
 1- 100mm electrical ducting, sunken under granite setts ~100mm and/or to the discretion of the lighting specialist and Stables Electrician

CLIENT:
 STABLES MARKETS
 CAMDEN TOWN

Stephen Levrant Heritage Architecture
 363 Heritage Architecture
 West Hampstead, London
 NW6 1LP
 (tel) 0207 435 7502 (fax) 0207 794 9712

SCALE:
 1:50

DWG No.
 ST021

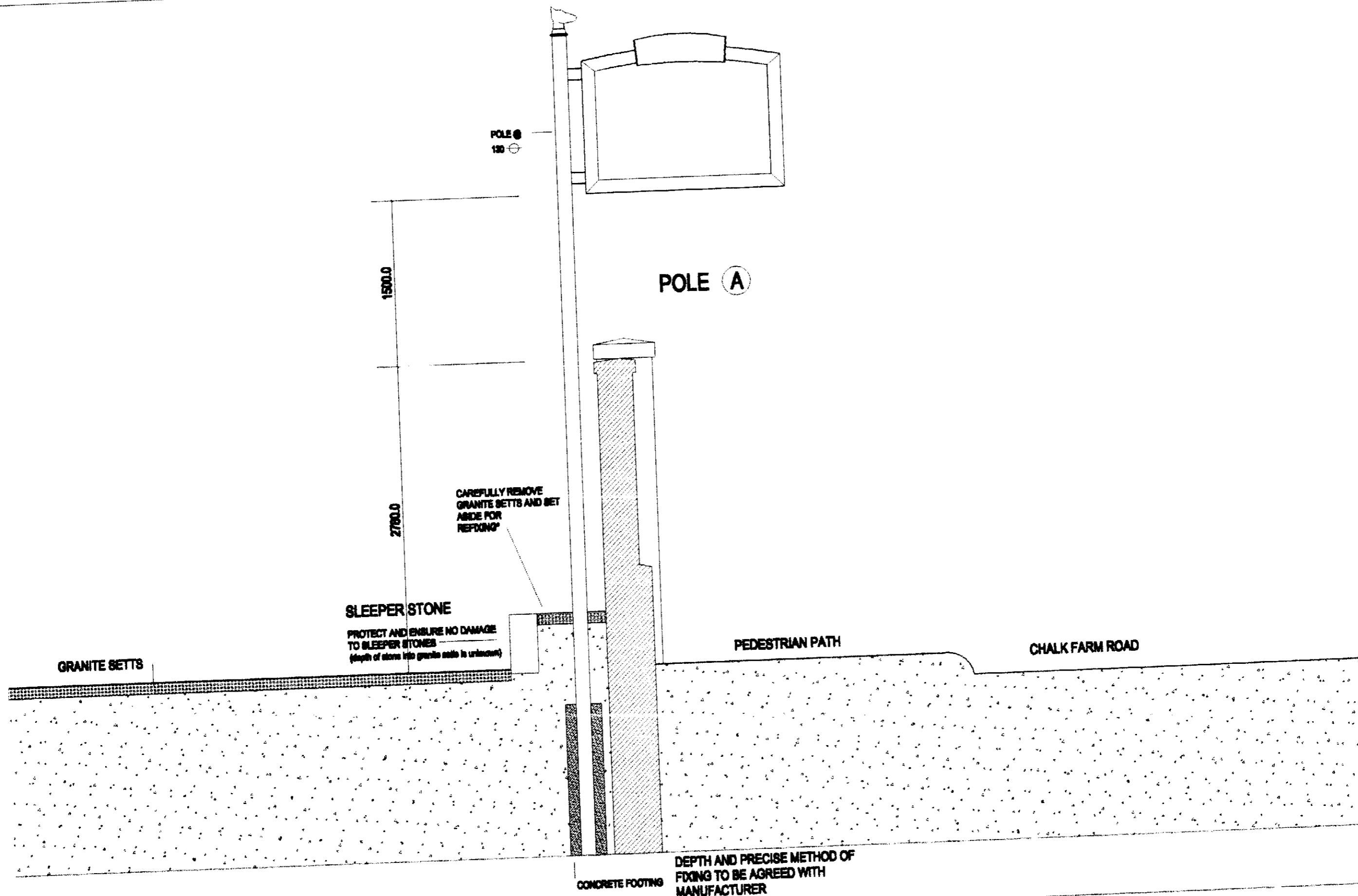
TYPICAL SECTION
 (near pole F)

DATE

LEX0100430

LEX0100430

LEX0100430



GENERAL NOTES:

- This drawing is the rough guidance for the sign maker.
- exact dimensions of metal gauge is an estimate, and is up to the discretion of the sign maker
- lighting fixtures, and their dimensions will be left to the discretion of the lighting specialist

*granite setts to be removed carefully and laid back into soil as existing. HOWEVER, none of the setts shall be broken for the pole, but laid back around the base of the pole. (refer to dwg. ST013)

CLIENT:
STABLES MARKETS
CAMDEN TOWN

SCALE:
 1:50

DWG No.
 ST020

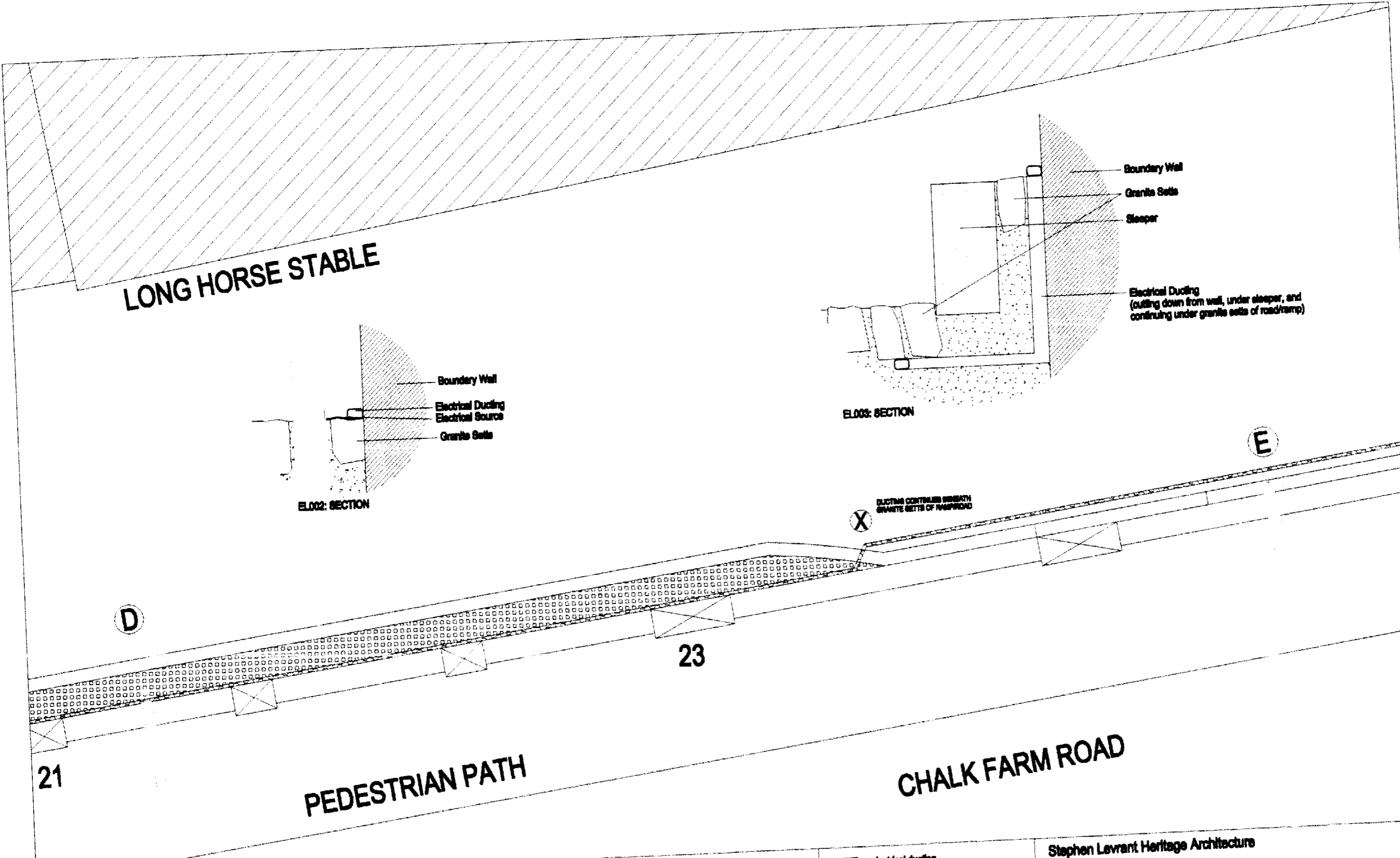
TYPICAL SECTION
 Through Wall, Near Pole A

Stephen Levrant Heritage Architecture
 383 Heritage Architecture
 West Hampstead, London
 NW8 1LP
 (tel) 0207 435 7502 (fax) 0207 794 9712

DATE
 March 15, 2001

08400100430

02H0010201


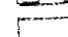
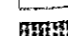


GENERAL NOTES:
 -Typical Section Dwg: Pole A(ST010-A); Pole F (ST011)
 -refer to dwg ST008-A for complete layout of poles
 -lighting fixtures, and their dimensions will be left to the discretion of the lighting specialist.
 -62mmX42mm electrical ducting to run along wall in brick joints until point **X** and then continues beneath granite setts.

CLIENT:
STABLES MARKETS
CAMDEN TOWN

SCALE:
 1:100

Dwg. No.
 ST008-B

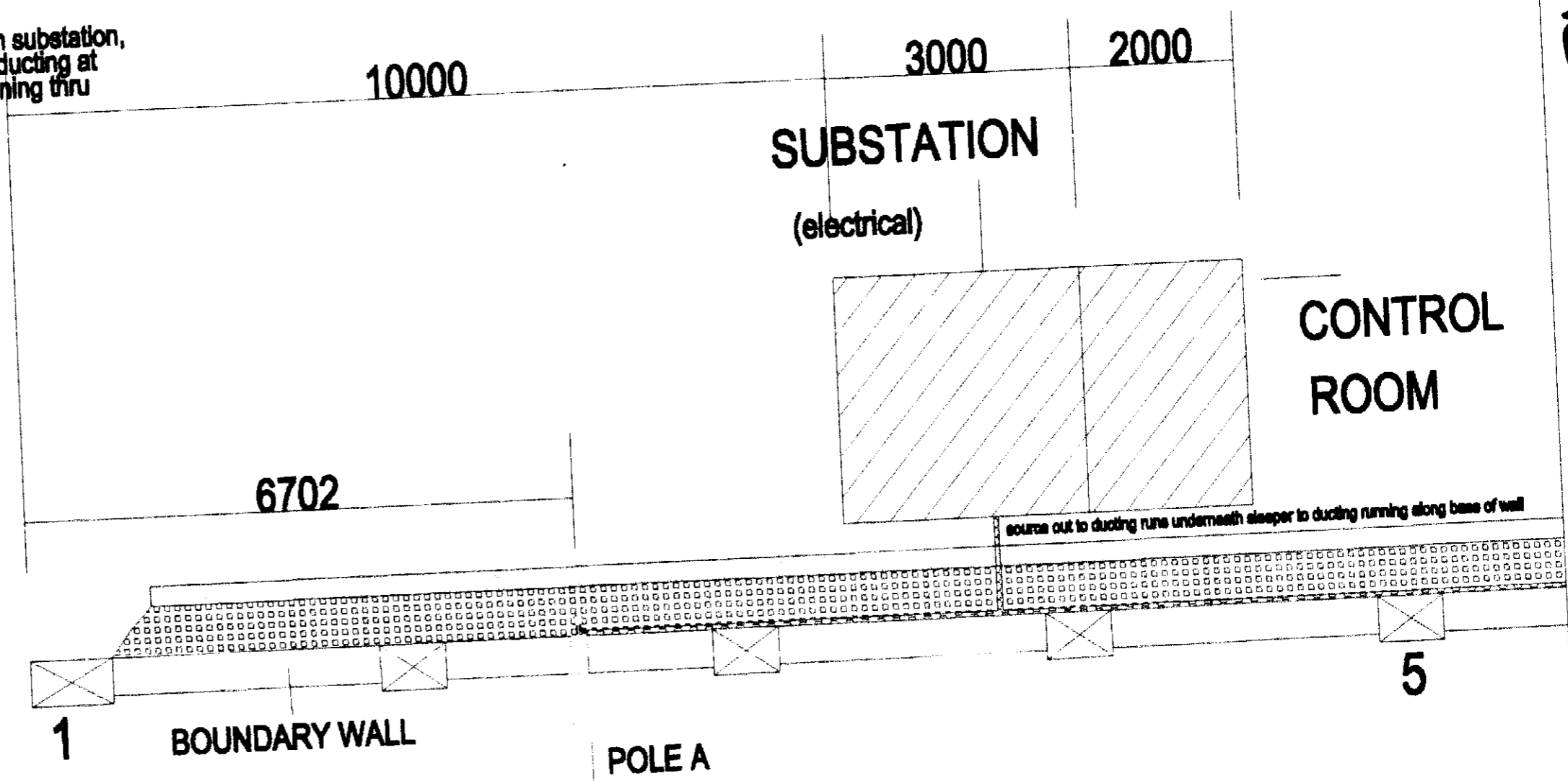
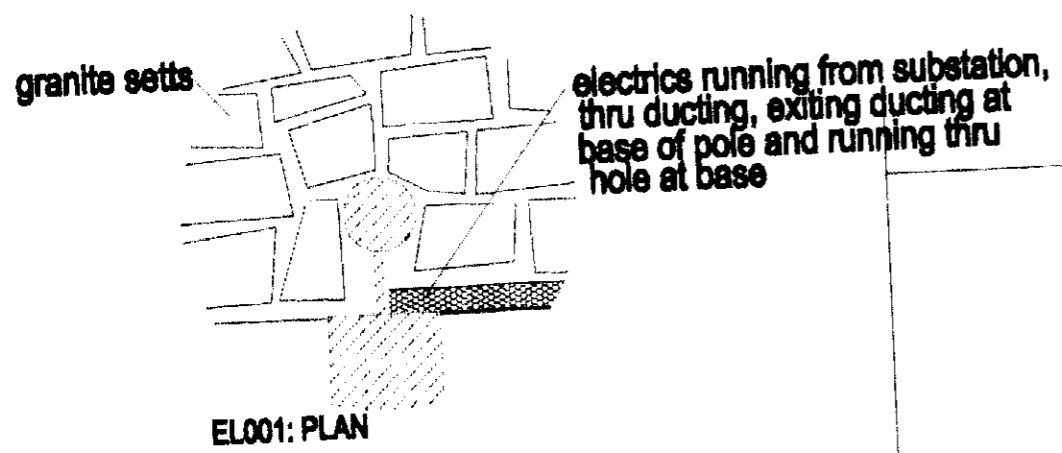
 electrical ducting
 sleeper stone
 granite setts

21/23 numeric numbering of poles

Plan: Pole D & E
 including electrical data

Stephen Levrant Heritage Architecture
 363 West End Lane
 West Hamptead, London
 NW8 1LP
 (tel) 020 7435 7502 (fax)020 7794 9712

CHALK FARM ROAD BUILDING



EXISTING
ENTRANCE

PEDESTRIAN SIDEWALK

GENERAL NOTES:
 -Typical Section Dwgs: Pole A(ST010-A); Pole F (ST011)
 -refer to dwg ST008-A for complete layout of poles
 -lighting fixtures, and their dimensions will be left to the discretion of the lighting specialist.
 -62mmX42mm electrical ducting to run along wall in brick joints until point \otimes and then continues beneath granite setts.

CLIENT:
 STABLES MARKETS
 CAMDEN TOWN

SCALE:
 1:100

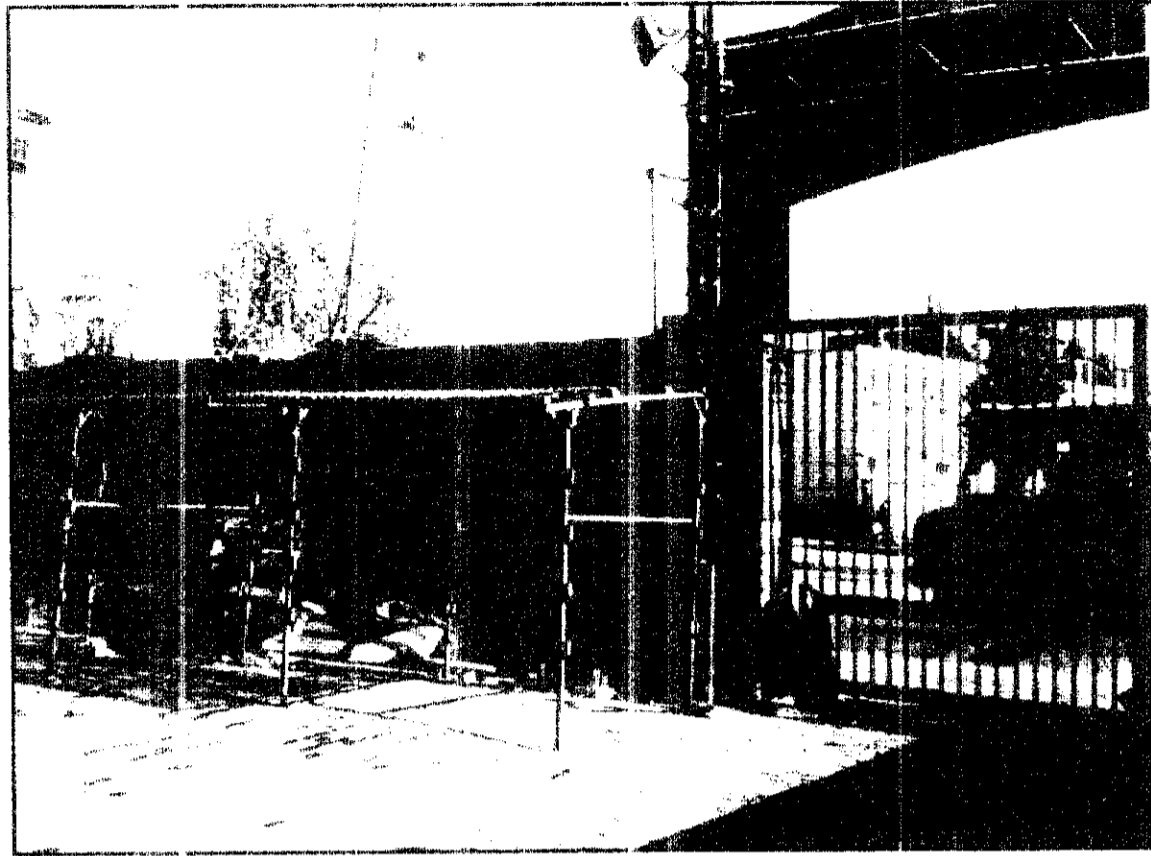
Dwg. No.
 ST007-B

- electrical ducting
 - sleeper stone
 - granite setts between boundary wall and sleeper stone
 - numeric numbering of poles
 - all of ground surface within stables proper is of granite setts.
- 1/5

Plan: Pole A
 including electrical data

Stephen Levrant Heritage Architecture
 363 West End Lane
 West Hampstead, London
 NW6 1LP
 (tel) 020 7435 7502 (fax) 020 7794 9712

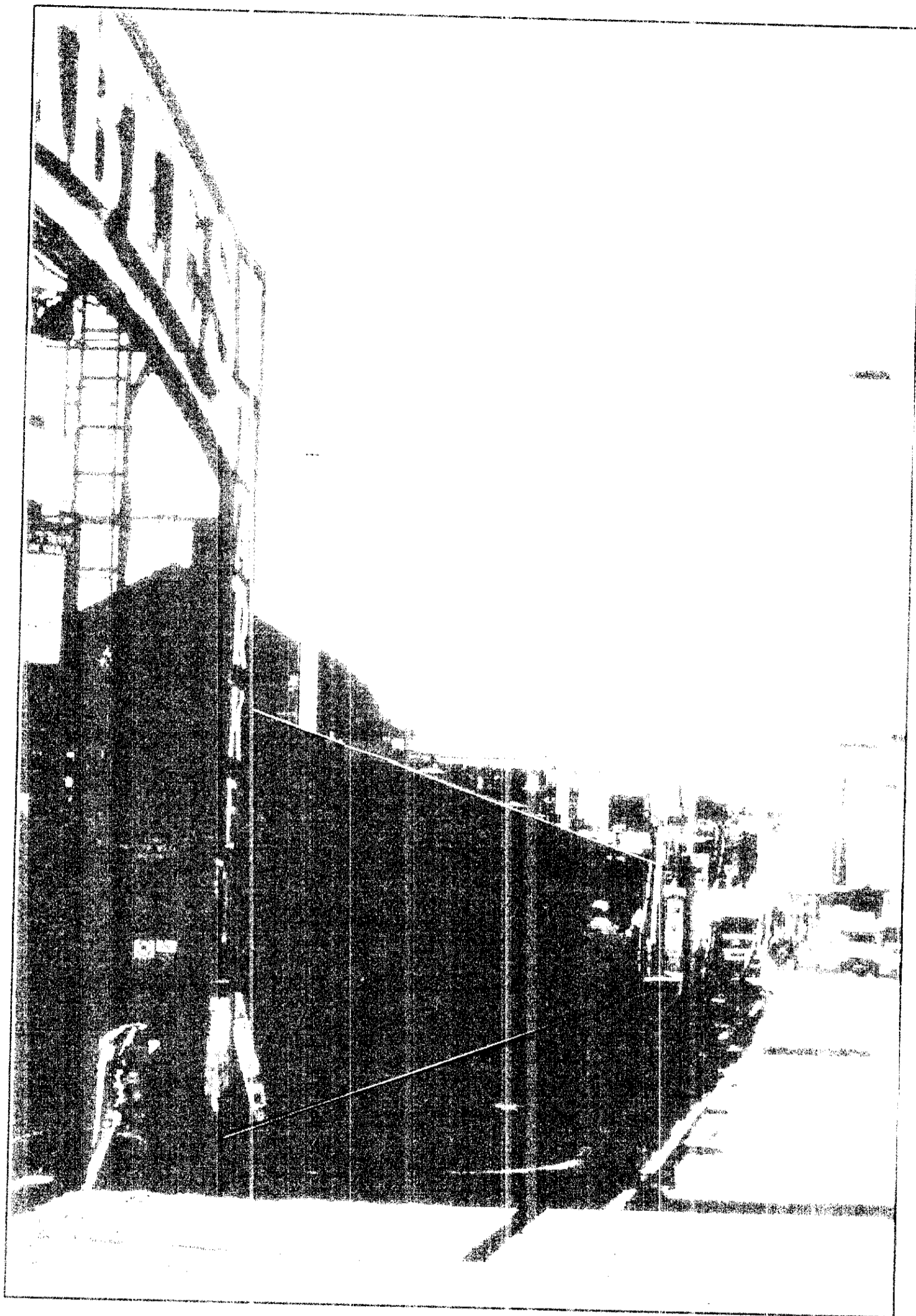
020700101030



Existing Signage along Chalk Farm Road.
-Banners are attached directly to the walls, are constructed poorly, and have deteriorated structurally and aesthetically



Lex 0100430



Proposal for new signage along Chalk Farm Road. What now appears to be a void in the middle will actually have an object/logo hanging within. Please refer to full set of drawings for more information.

LEX0100430