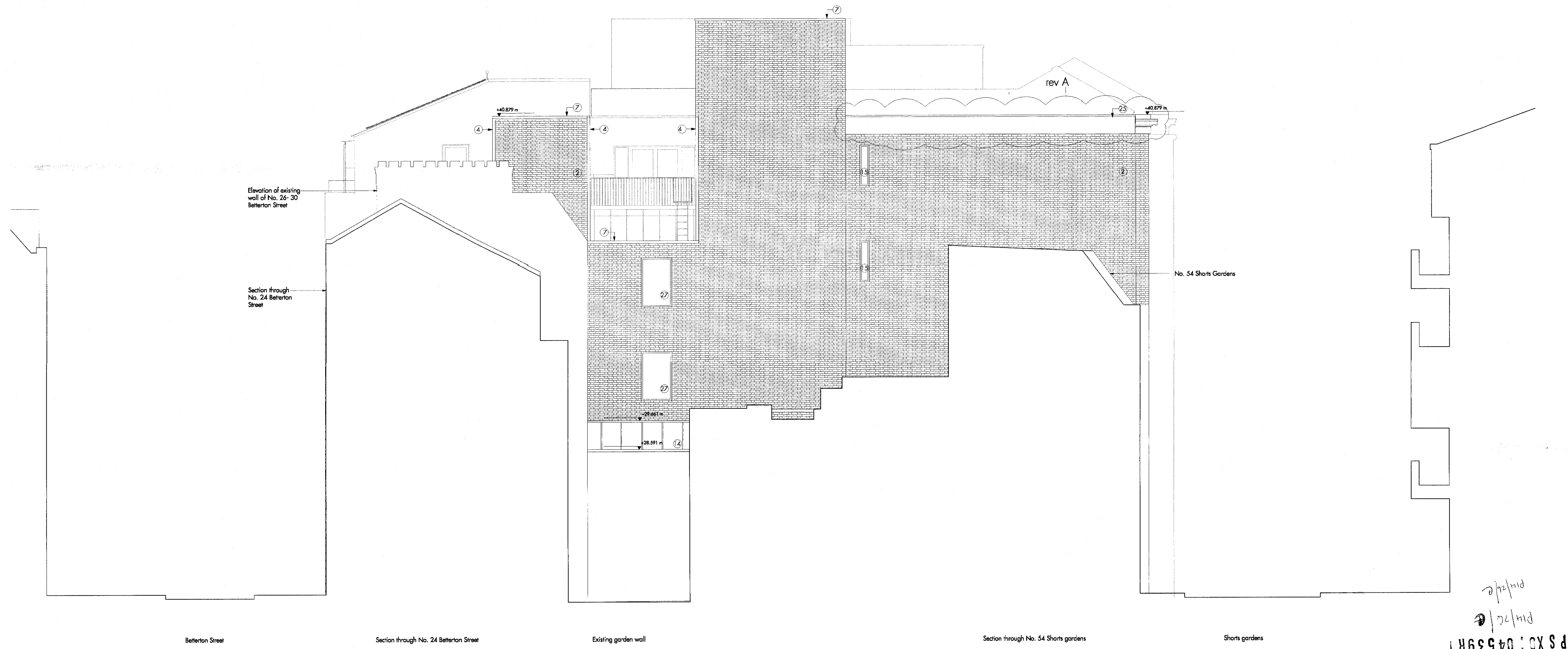


- List of proposed materials:
- 2. London stock facing brickwork (flemish bond)
 - 4. Lime stone cladding
 - 7. Pre-patinated zinc coping
 - 14. Lead roofing
 - 15. Polyester powder coated steel window
 - 25. Stone coping
 - 27. Polyester powder coated steel ventilation panel



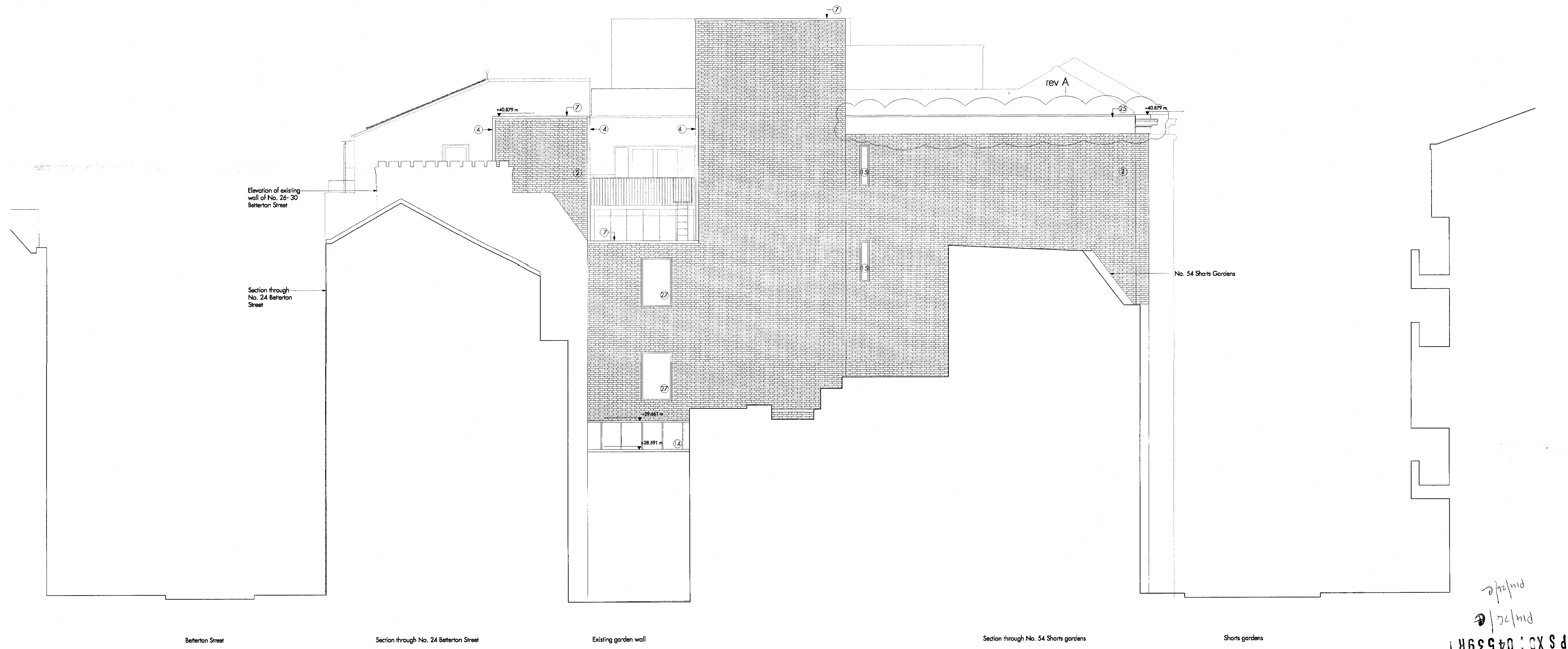
PSXC: 04539R1
 p14/2/c
 p14/2/c

Rev	Date	Description	Rev	Date	Description	Rev	Date	Description
1	11.03.01	ISSUED FOR CONSENT UNDER PLANNING CONDITION 1						
A	13.08.01	STONE CORNICE REVISED, ISSUED FOR CONSENT UNDER PLANNING CONDITION 1						
		REV A REPLACES REV /						

Atkins and Morrison
 Architects
 62 Newman Street
 London W1P 3JG
 Tel: 020 7612 7100
 Fax: 020 7612 7101

THE HOSPITAL
 ENDELL STREET, LONDON WC2
 PROPOSED REAR (EAST) ELEVATION

- List of proposed materials:
- 2. London stock facing brickwork (flemish bond)
 - 4. Lime stone cladding
 - 7. Pre-patinated zinc coping
 - 14. Lead roofing
 - 15. Polyester powder coated steel window
 - 25. Stone coping
 - 27. Polyester powder coated steel ventilation panel



P S X O : 04539 R 1
 p14/2/c
 p14/2/c

Rev	Date	Description	Rev	Date	Description	Rev	Date	Description
1	11.03.01	ISSUED FOR CONSENT UNDER PLANNING CONDITION 1						
A	13.08.01	STONE COPING REVISED, ISSUED FOR CONSENT UNDER PLANNING CONDITION 1						
		REV A REPLACES REV /						

Allies and Morrison
 Architects
 62 Newman Street
 London W1P 3JG
 Tel: 020 7612 7100
 Fax: 020 7612 7101

THE HOSPITAL
 ENDELL STREET, LONDON WC2
 PROPOSED REAR (EAST) ELEVATION