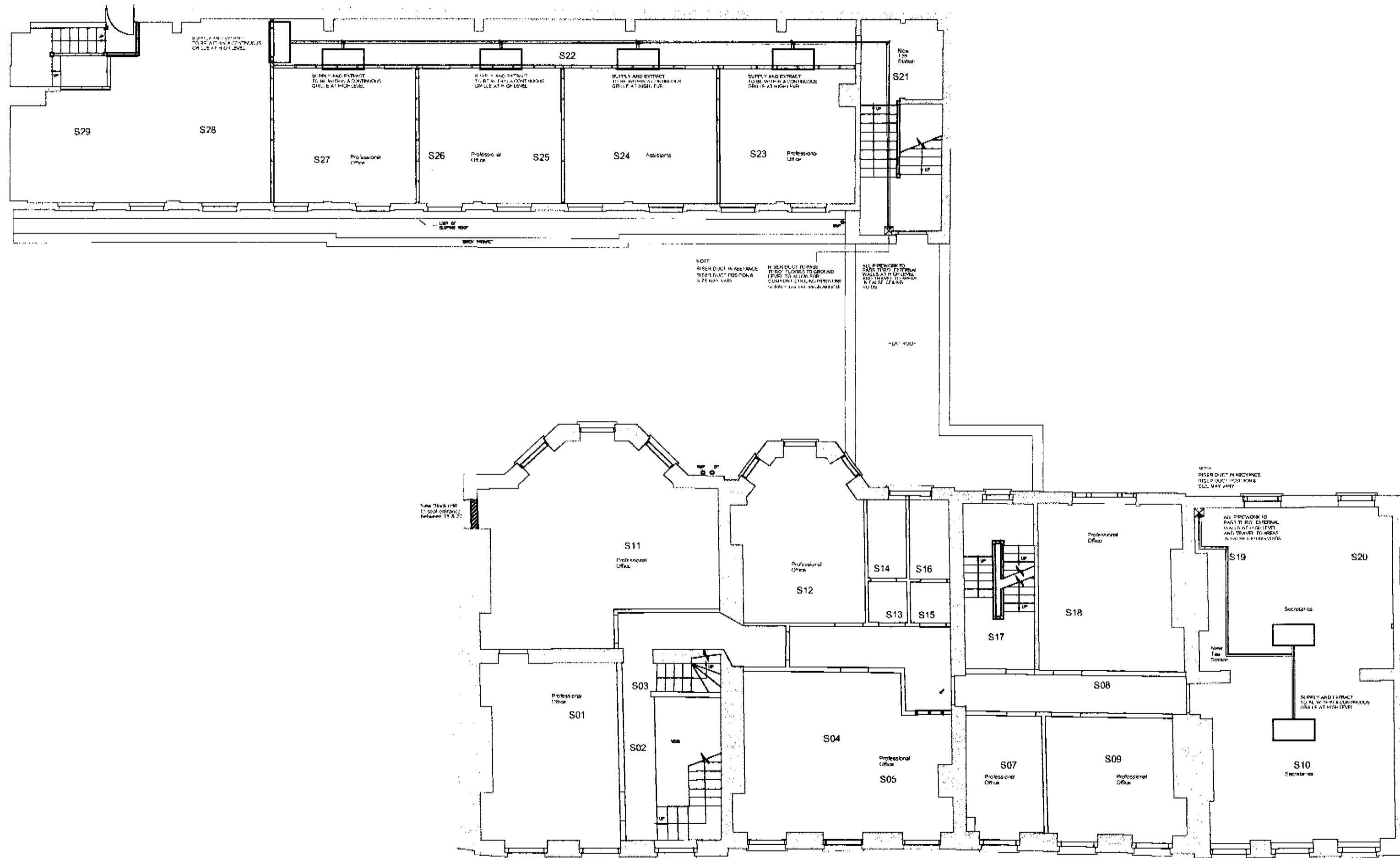


COPYRIGHT This drawing and any design thereon is the copyright of Roy Millard Associates Architects and must not be reproduced without their written consent.
Do not scale from this drawing.



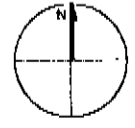
C: CONDENSERS & PIPEWORK REVISED 14/08/01
B: Condenser size, no. & position revised 20/06/01
A: Partition & Door re-installed to areas 15/06/01
S07/S09, NOT Demolished
revisions

Roy Millard Associates Architects
LIMITED

1 Riverside Walk, South Street
Bishop's Stortford,
Herts. CM23 3AG

Tel (01279) 755005
Fax (01279) 654482

E-mail - (CAD) = perrinj@ukonline.co.uk
E-mail - (Office) = rma@ukgateway.net



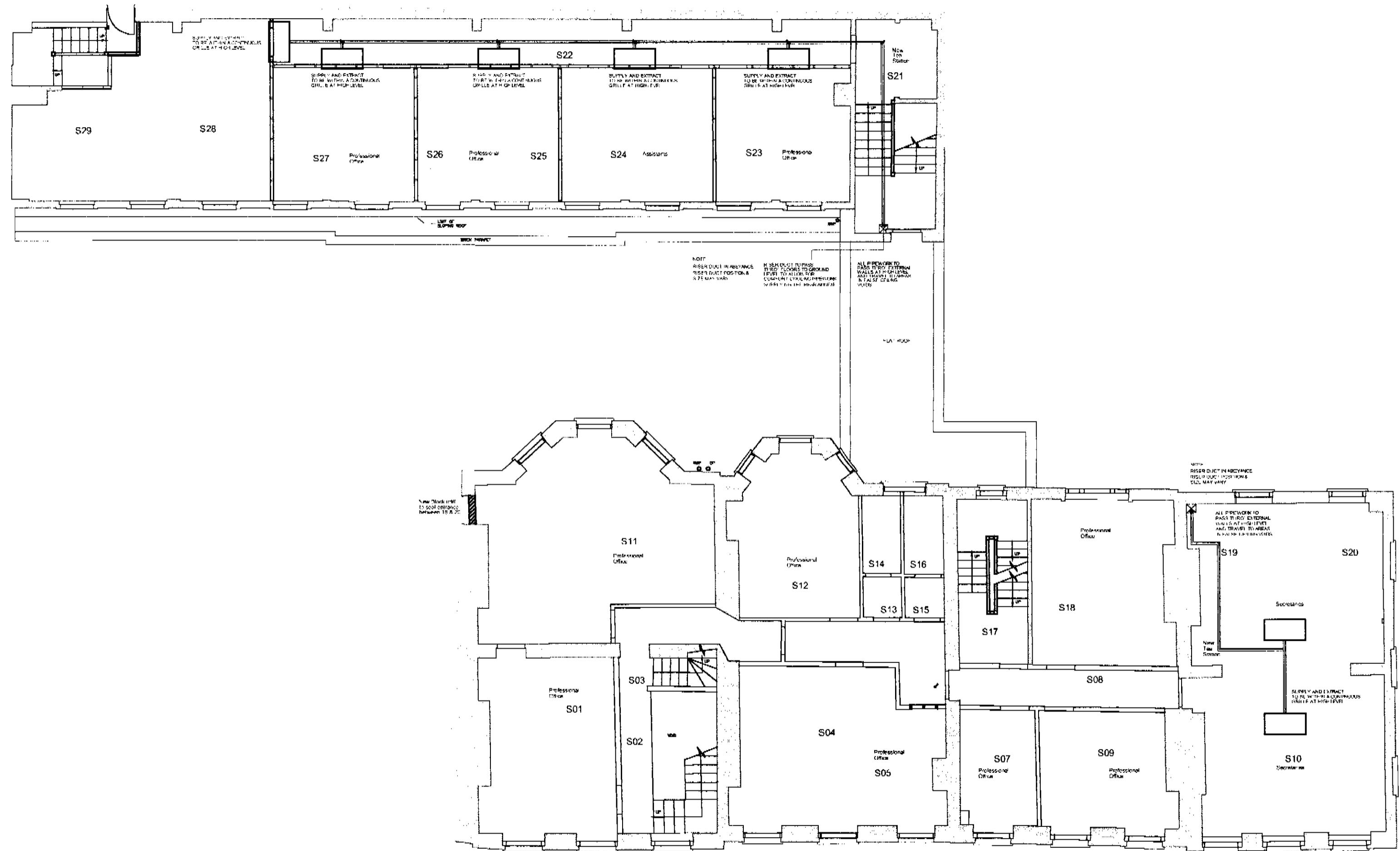
Reddie & Grose
12-18 Theobald Road
London WC1

23 -00 -27	rev. C
date	04/01
scale	1:100@A2
drawn	AP
checked	

PSX0105017

Second Floor Proposed
A/C (Comfort Cooling)
LAYOUT

COPYRIGHT This drawing and any design thereon is the copyright of Roy Millard Associates Architects and must not be reproduced without their written consent.
Do not scale from this drawing.



C: CONDENSERS & PIPEWORK REVISED 14/08/01
B: Condenser size, no. & position revised 20/06/01
A: Partition & Door re-installed to areas S07/S09. NOT Demolished revisions

Roy Millard Associates Architects LIMITED
1 Riverside Walk, South Street
Bishop's Stortford,
Herts. CM23 3AG
Tel (01279) 755005
Fax (01279) 654482
E-mail - (CAD) = perrinj@ukonline.co.uk
E-mail - (Office) = rma@ukgateway.net

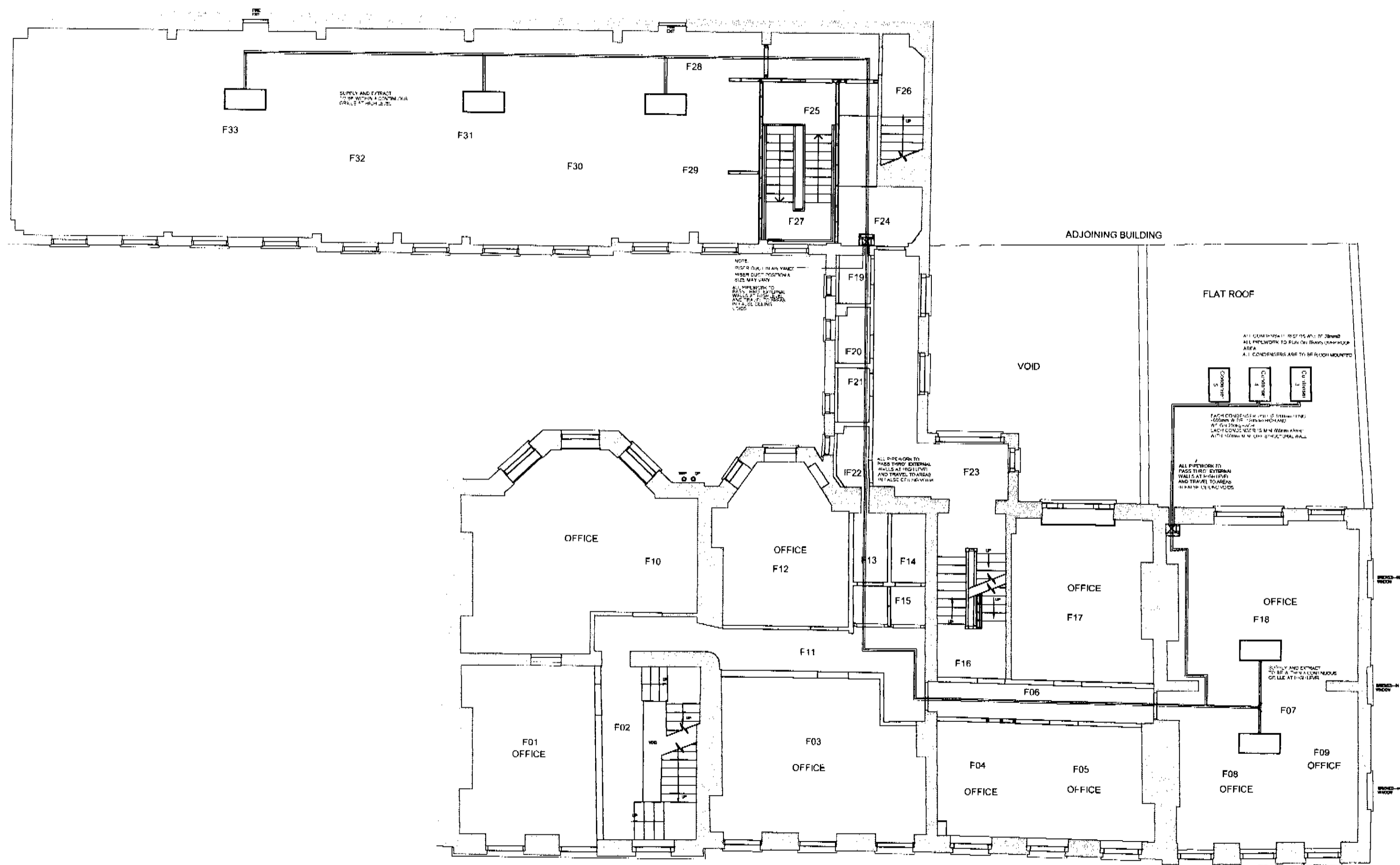
Reddie & Grose
12-18 Theobald Road
London WC1

23 -00 -27	rev. C
date	04/01
scale	1:100@A2
drawn	AP
checked	

PSX0105017

Second Floor Proposed
A/C (Comfort Cooling)
LAYOUT

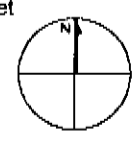
COPYRIGHT This drawing and any design thereon is the copyright of Roy Millard Associates Architects and must not be reproduced without their written consent.
Do not scale from this drawing.



A: CONDENSERS & PIPEWORK REVISED 14/08/01

revisions

Roy Millard Associates Architects
LIMITED
1 Riverside Walk, South Street
Bishop's Stortford,
Herts. CM23 3AG
Tel (01279) 755005
Fax (01279) 654482
E-mail - (CAD) = perinaj@ukonline.co.uk
E-mail - (Office) = ma@ukgateway.net



Reddie & Grose
12-18 Theobalds Road
London WC1

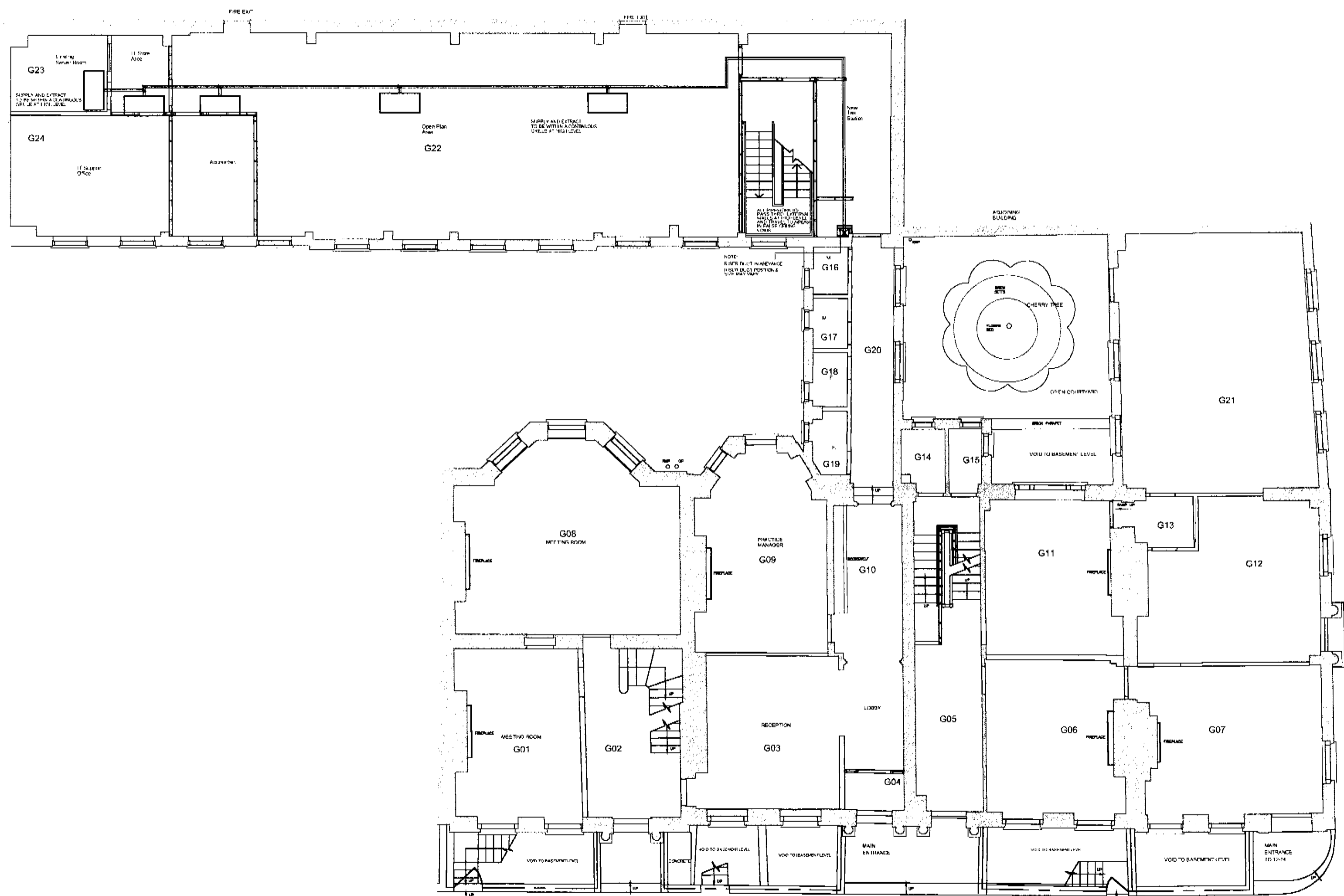
23 -00 -28 rev. A

date	04/01
scale	1:100@A2
drawn	AP
checked	

First Floor Proposed

PCX0105017

COPYRIGHT This drawing and any design thereon is the copyright of Roy Millard Associates Architects and must not be reproduced without their written consent.
Do not scale from this drawing.



A: CONDENSERS & PIPEWORK REVISED 14/08/01

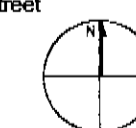
revisions

Roy Millard Associates Architects
LIMITED

1 Riverside Walk, South Street
Bishop's Stortford,
Herts. CM23 3AG

Tel (01279) 755005
Fax (01279) 654482

E-mail - (CAD) = perminaj@ukonline.co.uk
E-mail - (Office) = ma@ukgateway.net



Reddie & Grose
12-18 Theobalds Road
London WC1

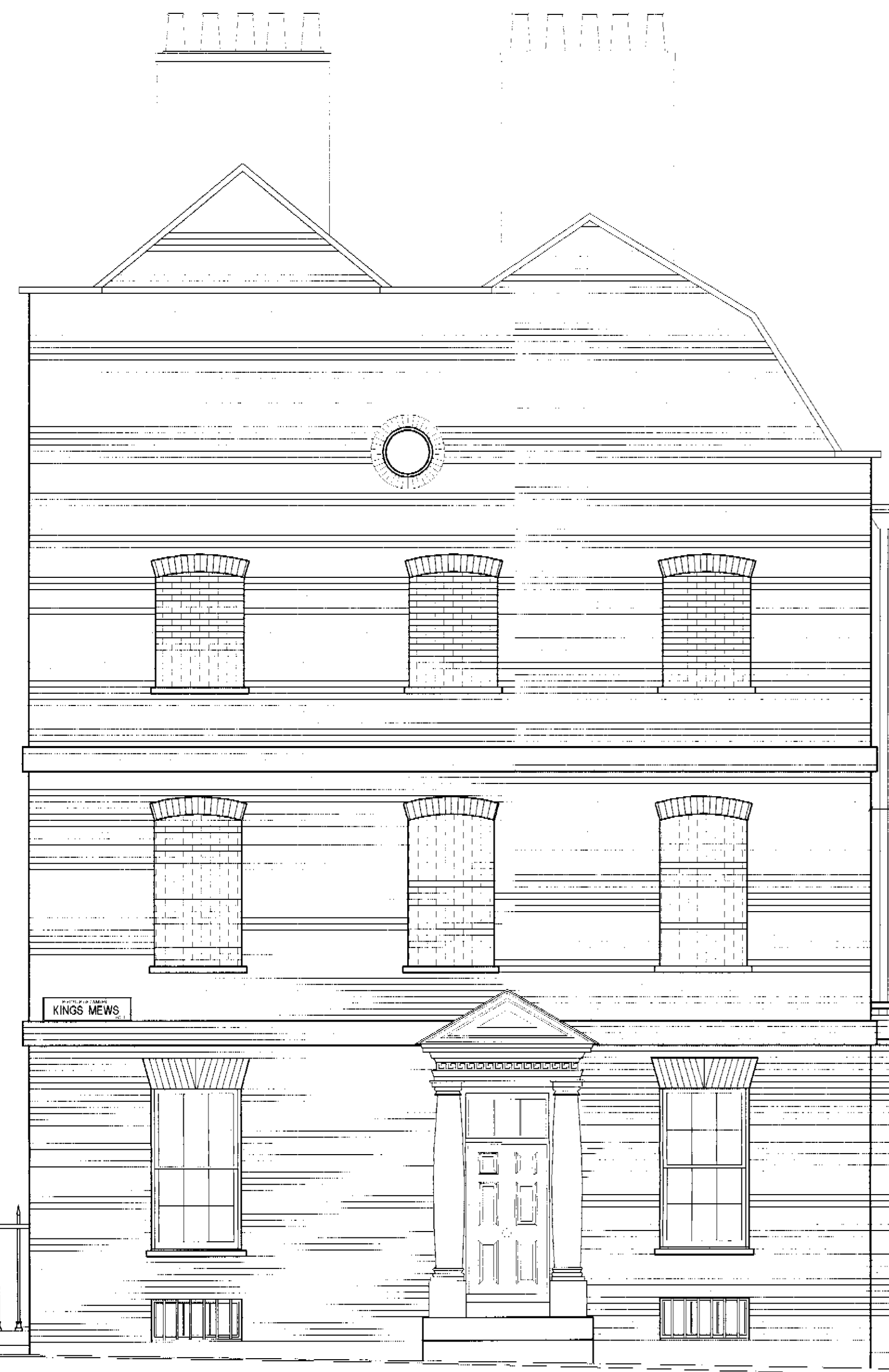
23 -00 -29 rev: A

date	04/01
scale	1:100@A2
drawn	AP
checked	

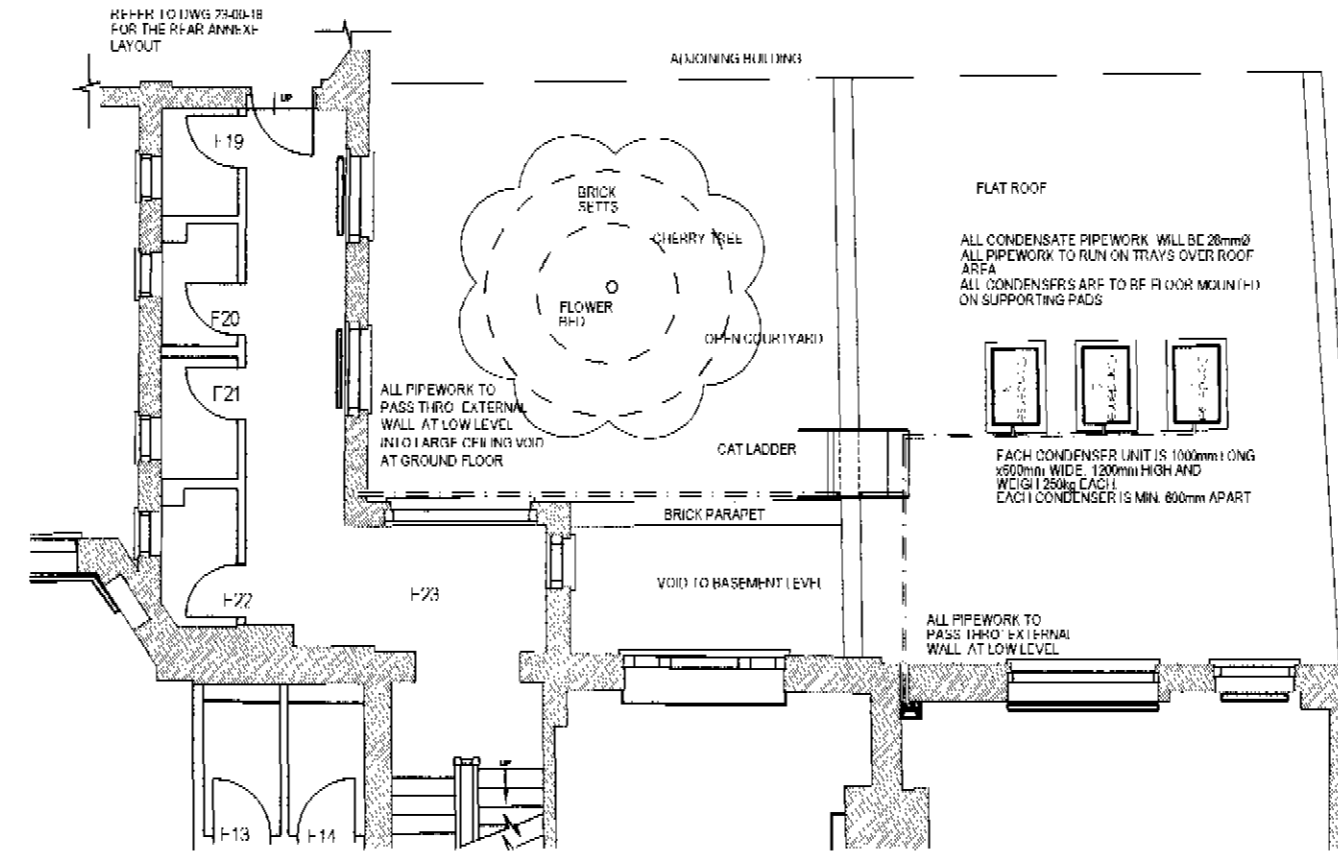
PSX0105017

Ground Floor Proposed
A/C (Comfort Cooling)
LAYOUT

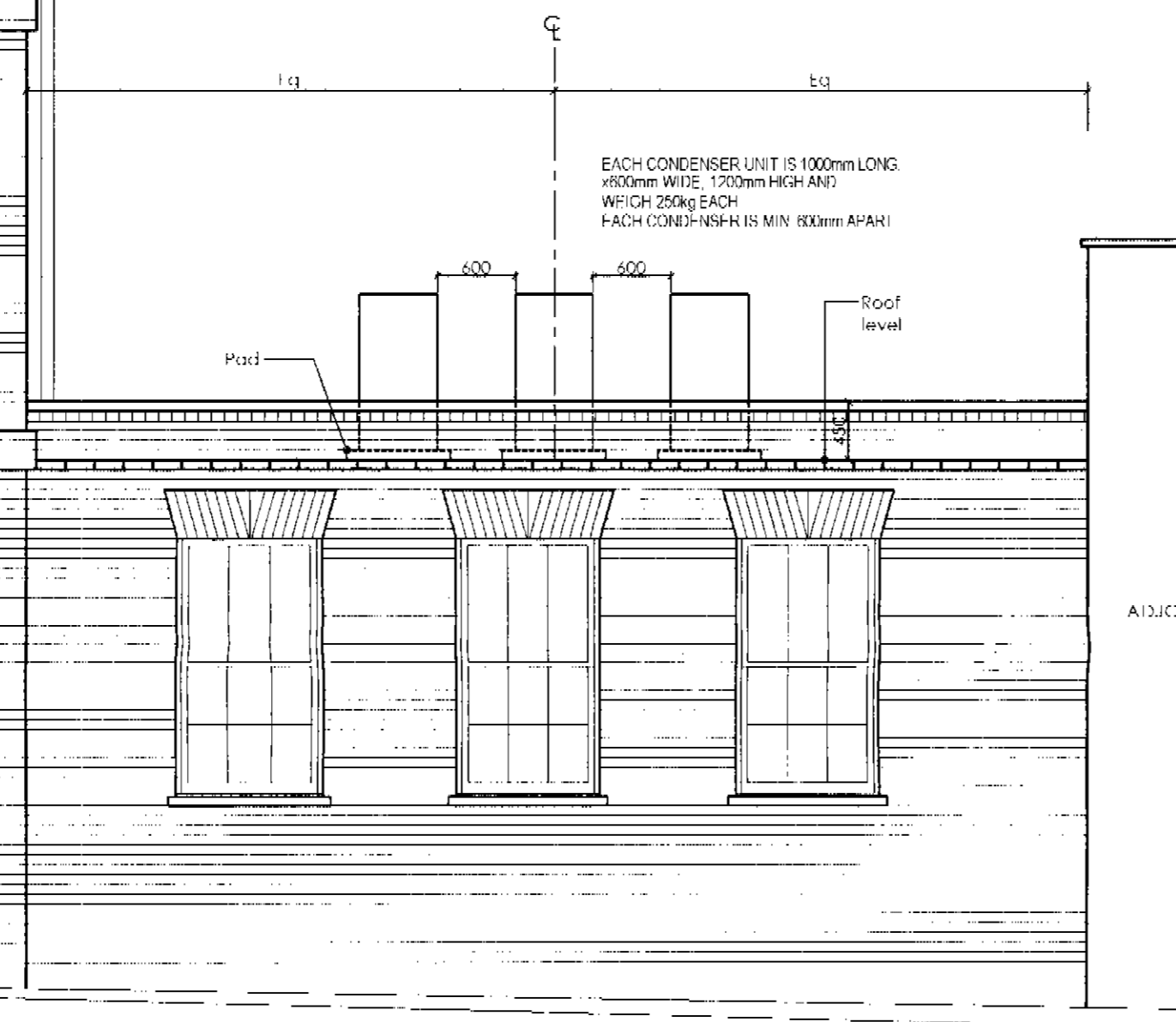
PSX0105017



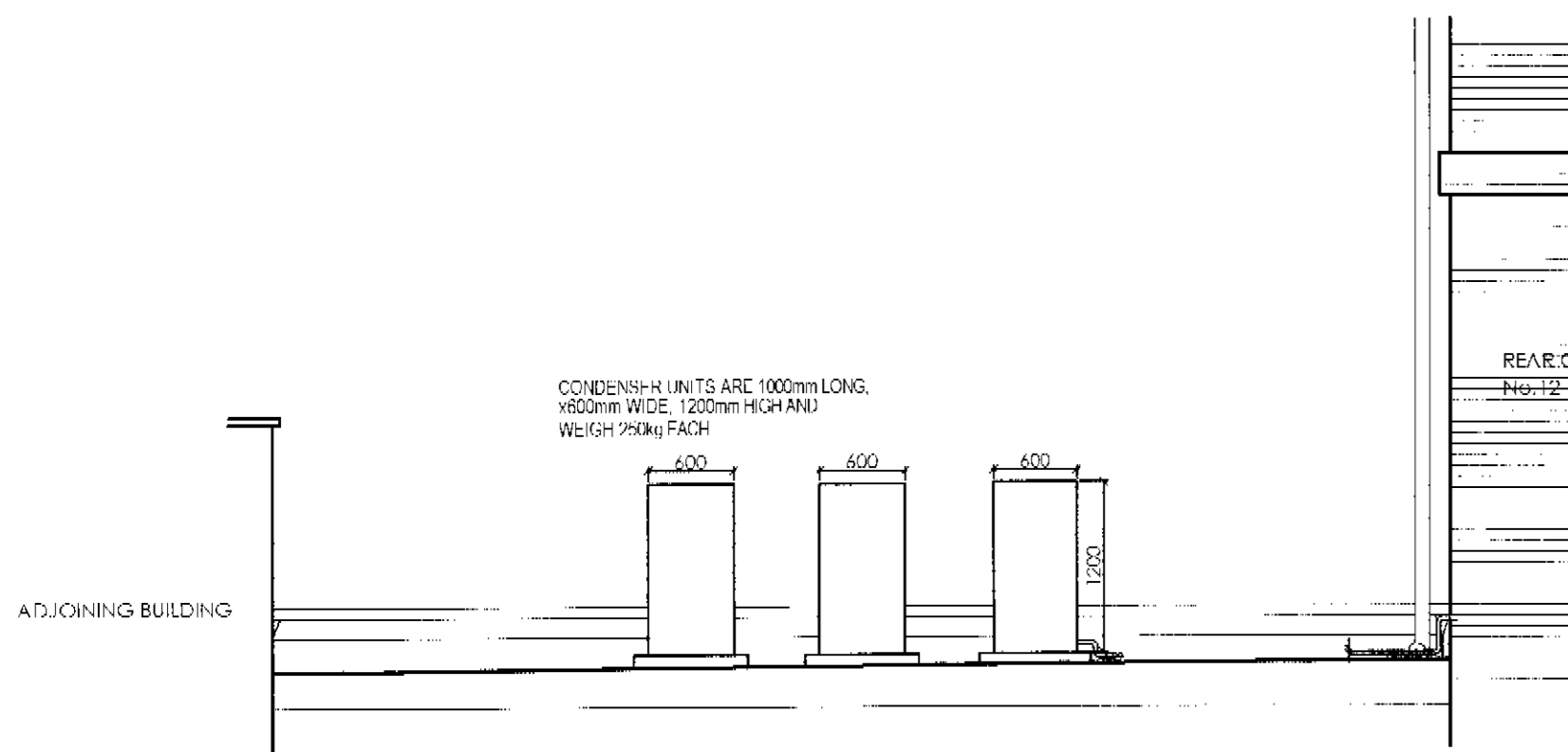
KINGS MEWS ELEVATION



FIRST FLOOR PLAN 1:100

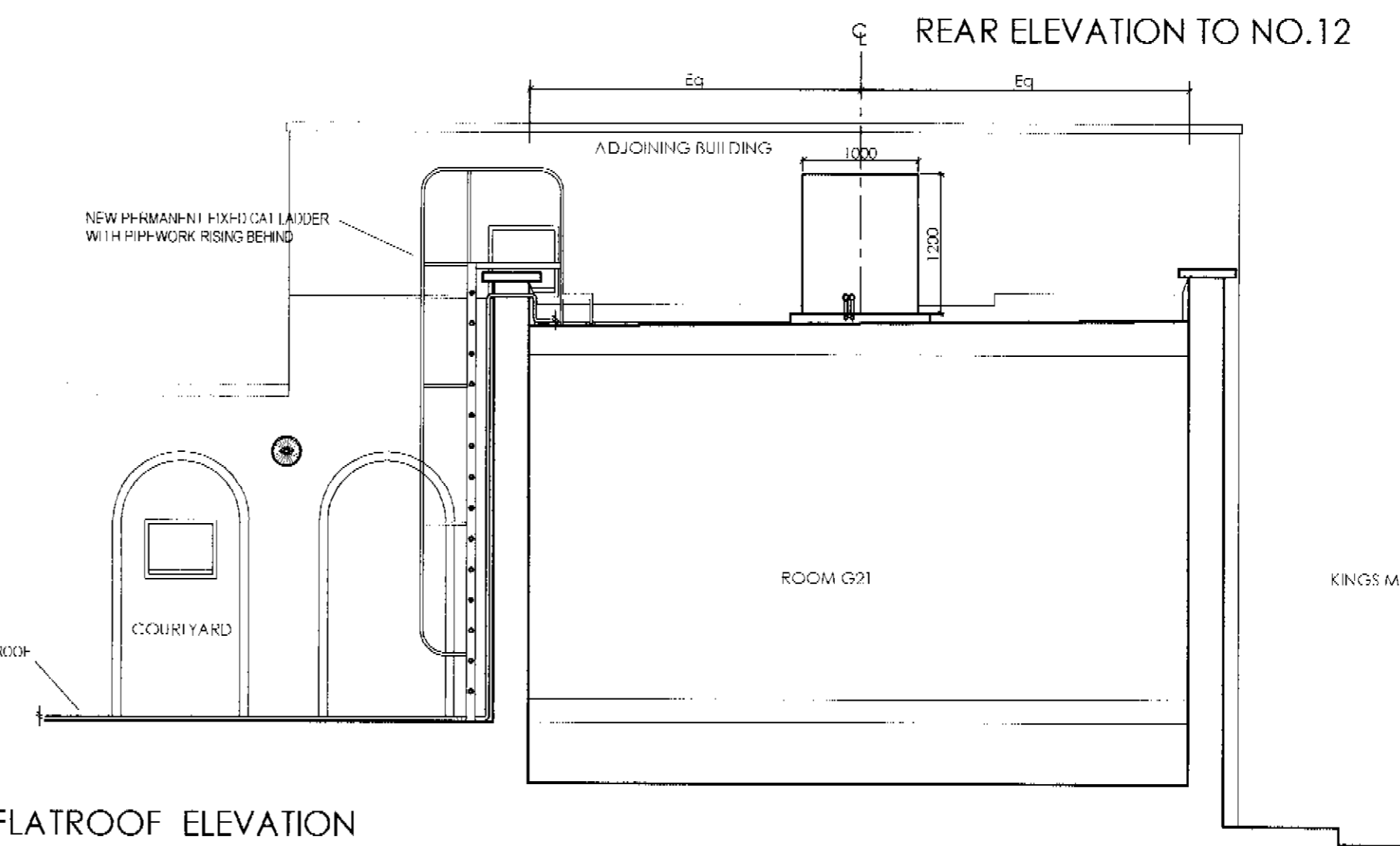


REAR ELEVATION TO NO.12



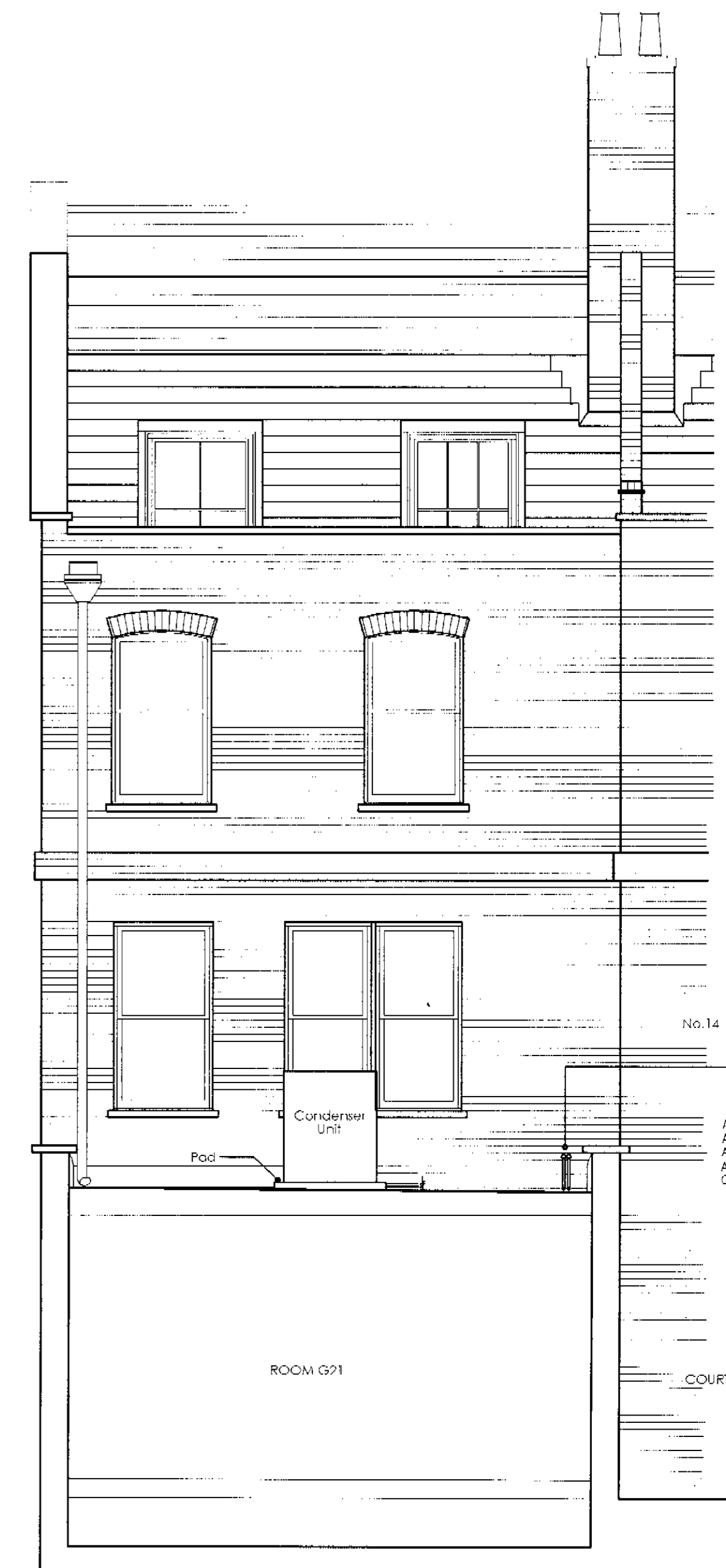
ROOF UPSTAND ELEVATION

(LOOKING TOWARDS KINGS MEWS)



FLATROOF ELEVATION

(VIEW FROM REAR OF NO.12)



ALL CONDENSATE PIPES WILL BE 28mm Ø
ALL CONDENSERS TO RUN ON TRAYS OVER ROOF
ALL CONDENSERS ARE TO BE FLOOR MOUNTED ON SUPPORTING PADS

ALL CONDENSATE PIPES WILL BE 28mm Ø
ALL PIPWORK TO RUN ON TRAYS OVER ROOF AREA
ALL CONDENSERS ARE TO BE FLOOR MOUNTED ON SUPPORTING PADS

COURTYARD

ROOM G21

KINGS MEWS

ADJOINING BUILDINGS

NO.12 THEOBALDS ROAD

NO.14

CONDENSER UNIT

PAD

28mm Ø PIPES TO ENTER BUILDING AT LOW LEVEL ABOVE FLAT ROOF - RISES INTERNALLY THROUGH DOOR

COPYRIGHT This drawing and any design thereon is the copyright of Roy Millard Associates Limited and must not be reproduced without their written consent.

Do not scale from this drawing

notes

revisions

23 - 00 - 19	rev:
date	Sept/2001
scale	1:50@A1 / 1:100@A3
drawn	AP
checked	

Reddie & Grose
12-18 Theobalds Road
London WC1

Kings Mews Elevations

Roy Millard Associates Architects
LIMITED

1 Riverside Walk, South Street
Bishop's Stortford,
Herts. CM23 3AG

Tel (01279) 755005

Fax (01279) 654482

E-mail - (CAD) = permaj@ukonline.co.uk
E-mail - (Office) = rma@ukgateway.net

PSX0105017