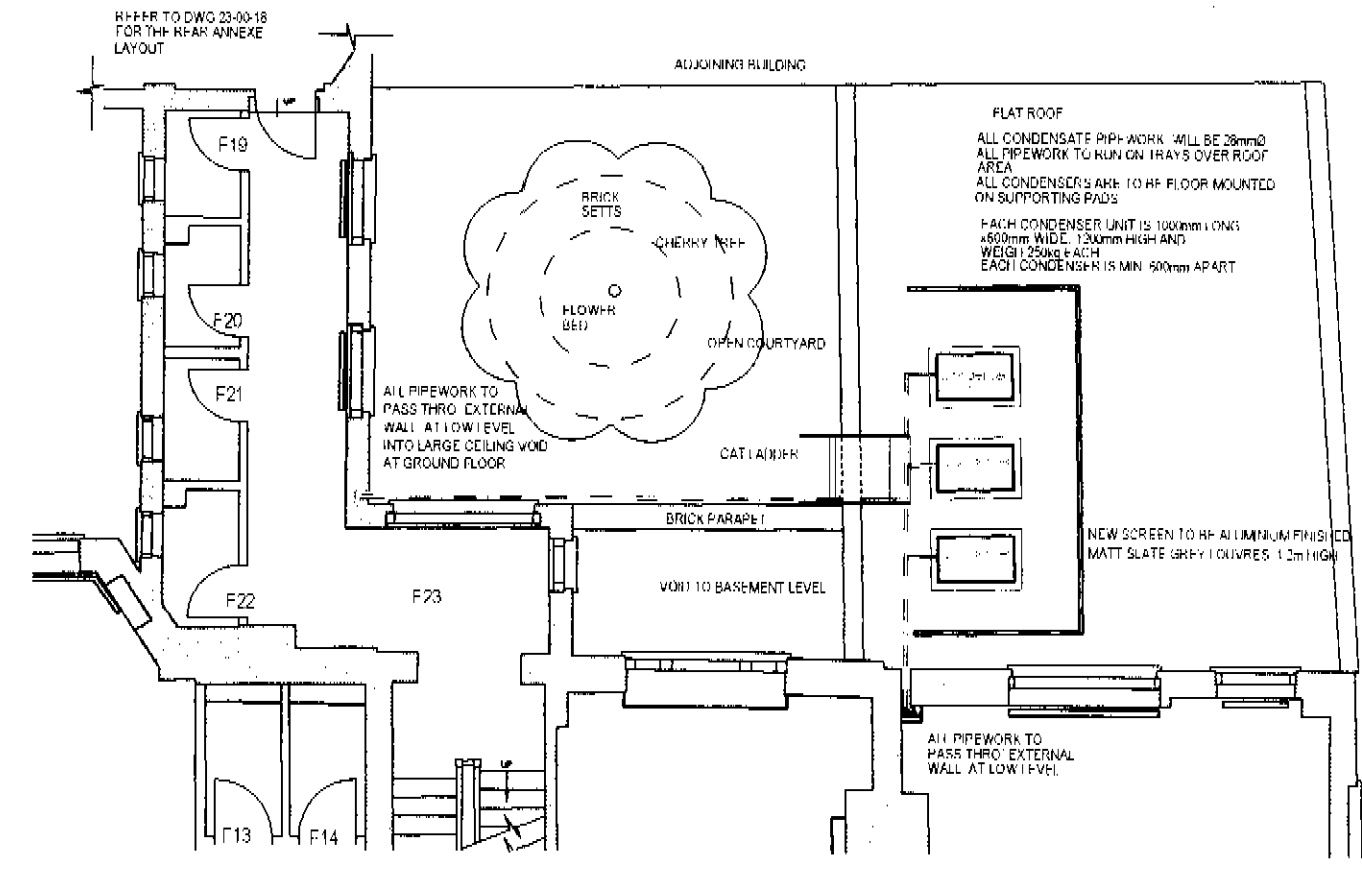




KINGS MEWS ELEVATION



FIRST FLOOR PLAN 1:100



REAR ELEVATION TO NO. 12

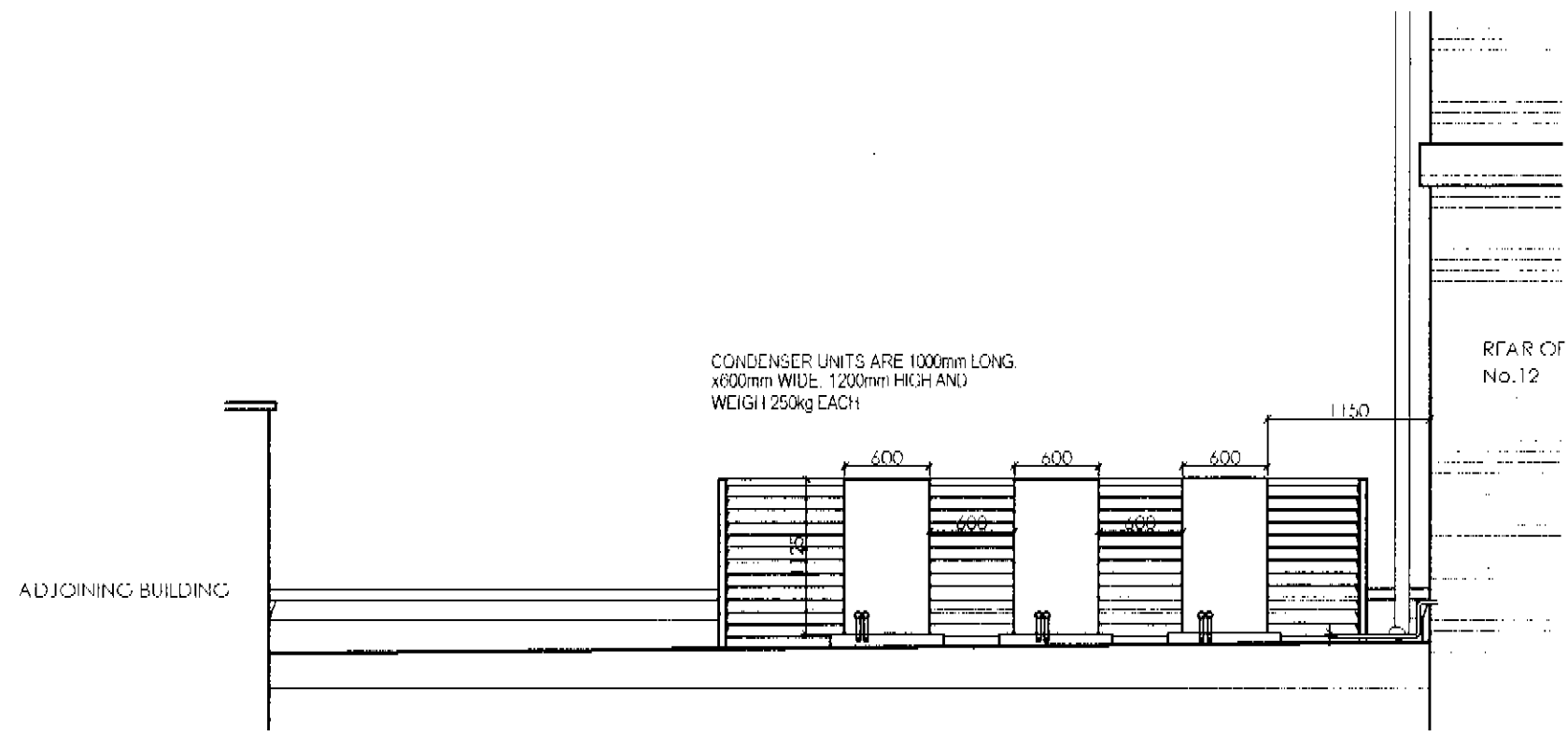
NO. 12 THEOBALDS ROAD

EACH CONDENSER UNIT IS 1000mm LONG x 600mm WIDE 1200mm HIGH AND WEIGH 125kg EACH EACH CONDENSER IS MIN. 600mm APART

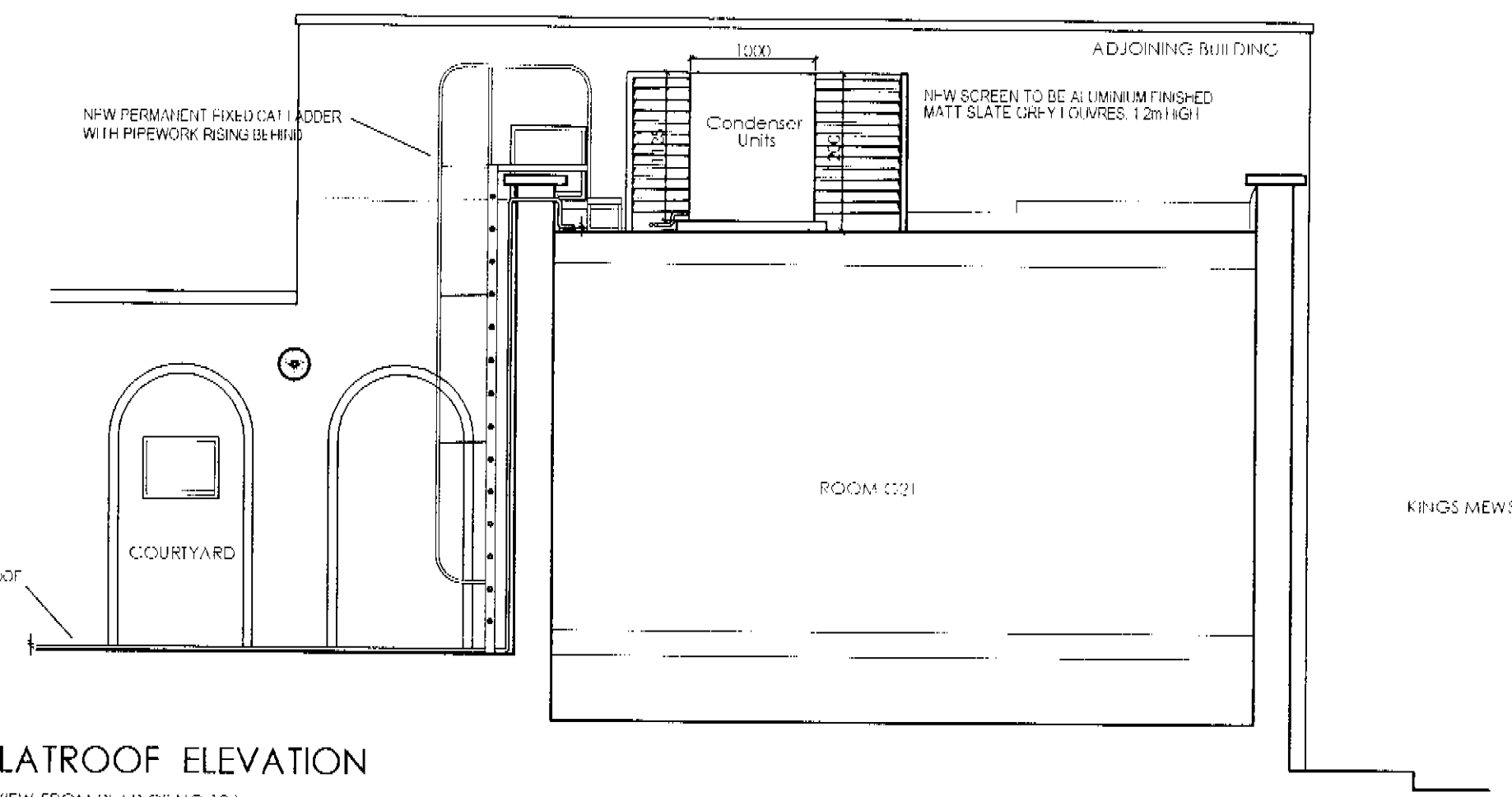
NEW SCREEN TO BE ALUMINIUM FINISHED MATT SLATE GR-F11 DIMES 1.2m HIGH

NO. 14 CONDENSATE PIPES WILL BE 25mm ABOVE TRAYS TO RUN ON TRAYS OVER ROOF AREA

ALL CONDENSATE PIPES WILL BE 25mm ABOVE TRAYS TO RUN ON TRAYS OVER ROOF AREA



ROOF UPSTAND ELEVATION  
[LOOKING TOWARDS KINGS MEWS]



FLATROOF ELEVATION  
[VIEW FROM REAR OF NO. 12]

NIS/61A.  
PSX0105017R3

notes

COPYRIGHT This drawing and any design thereon is the copyright of Roy Millard Associates Limited and must not be reproduced without their written consent.

Do not scale from this drawing

revisions

A:	Condenser orientation to elevations amended	01/11/01
B:	Condenser orientation & position amended	29/11/01
C:	Condenser orientation & position amended / Louvred screen added	02/01/02

23 - 00 - 19	rev: C
date	Sept/2001
scale	1:50@A1 / 1:100@A3
drawn	AP
checked	

Reddie & Grose  
12-18 Theobalds Road  
London WC1  
Kings Mews Elevations

Roy Millard Associates Architects (LIMITED)  
1 Riverside Walk, South Street  
Bishop's Stortford,  
Herts. CM23 3AG  
Tel (01279) 755005  
Fax (01279) 854482  
E-mail - (CAD) = perrinaj@ukonline.co.uk  
E-mail - (Office) = rma@ukgateway.net