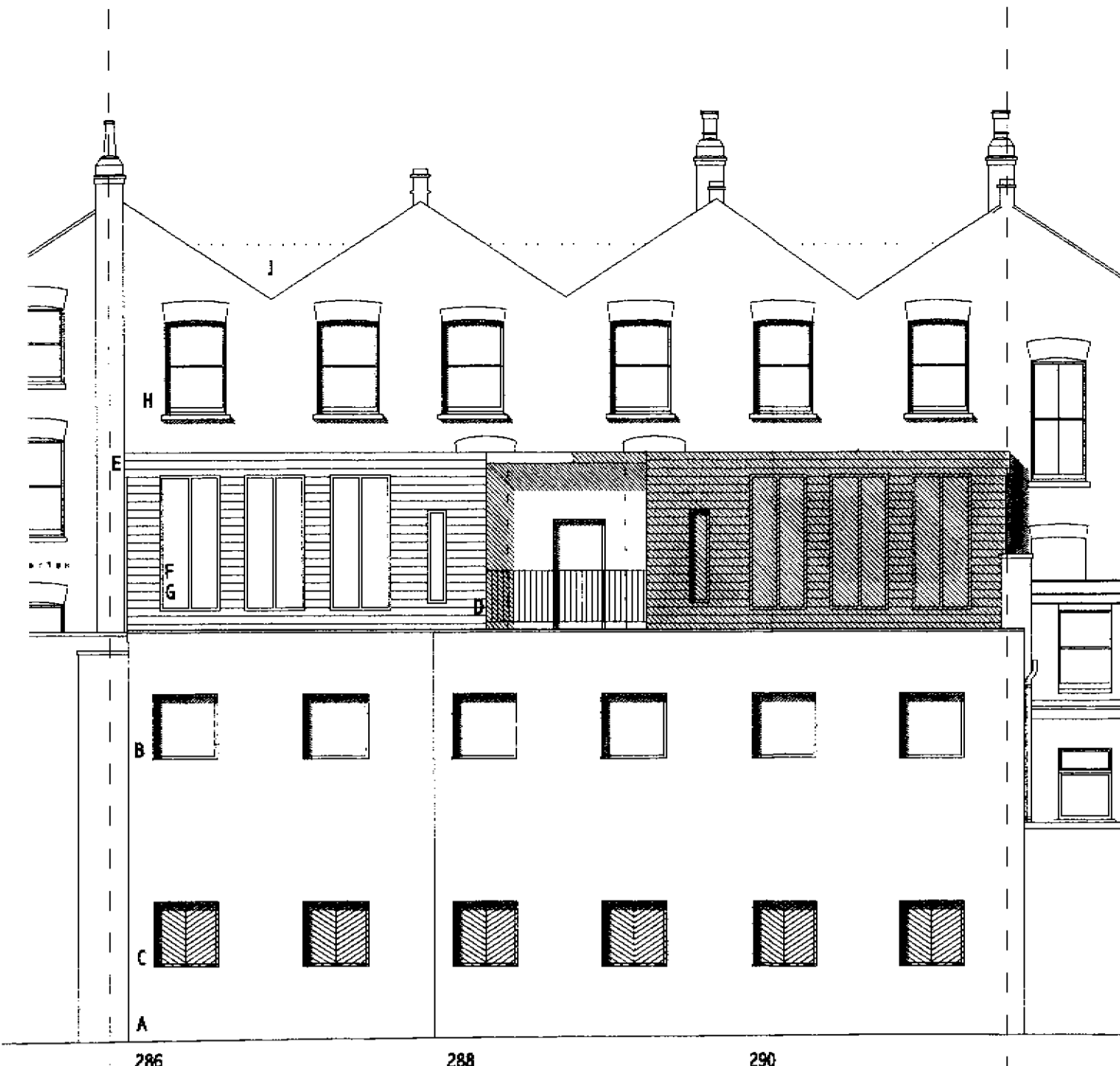




Front elevation

Lead flashing dressed over fascia  
 Fascia: Backlit grey glass  
 Fanlight: clear glass  
 Shop front: grey glass  
 Grey painted solid timber side door with vision panel  
 Plasters with backing and staircases: man-made stone  
 New entrance doors: grey glass level access

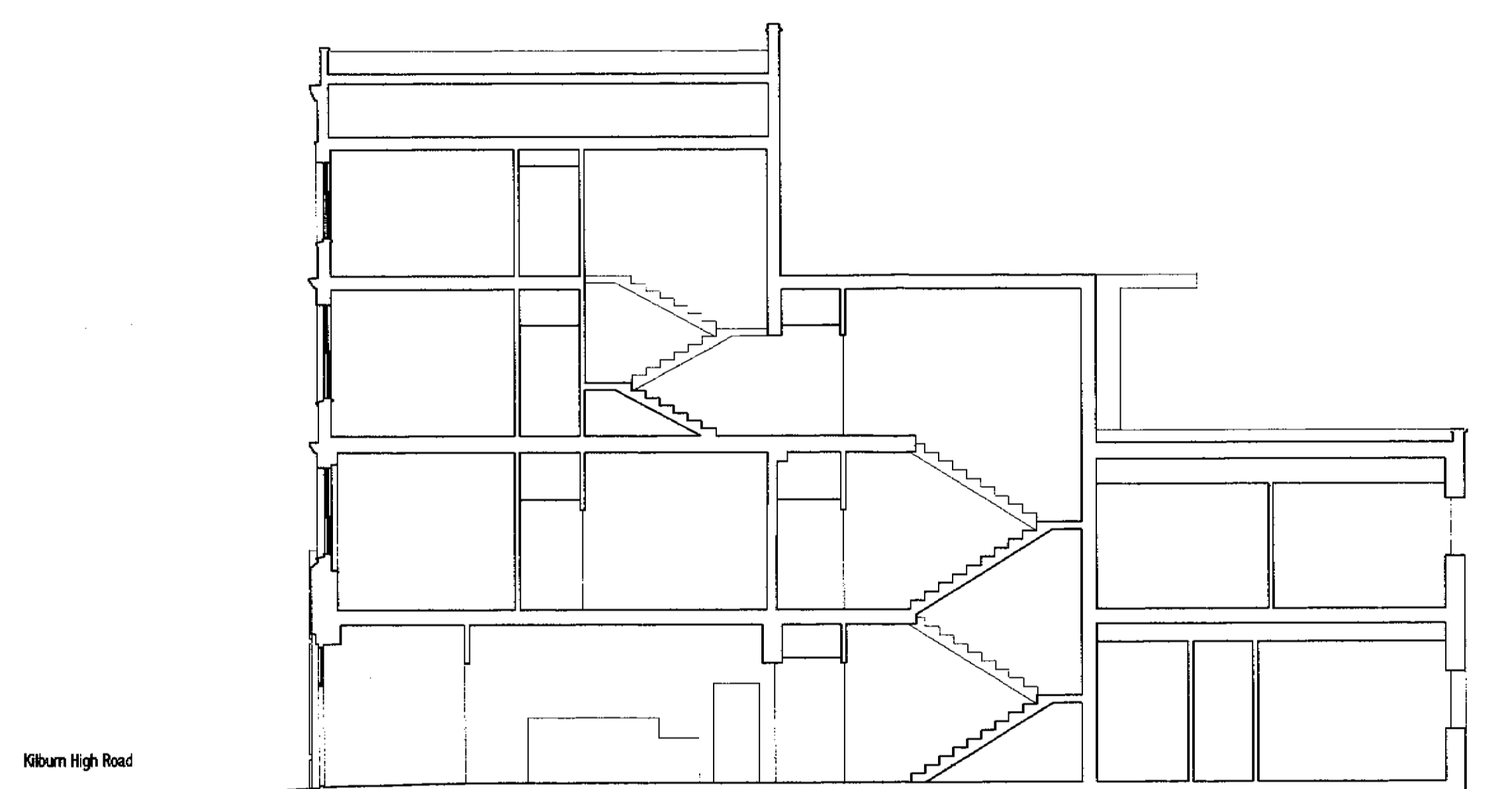


Rear elevation

- A painted fat render
- B powder coated aluminium window
- C painted steel 'burglar bars' in pattern based on valley roof angles.
- D tubular steel balustrade and handrail.
- E stained timber fascia and purling
- F powder coated aluminium glazing bars
- G clear glazing
- H new white painted timber sash window in adjusted opening sizes with new segmented brick arch lintels
- J brick walls to valleys removed. Roof slates extended over butternut masonry
- K All colours of new materials on request and by agreement.

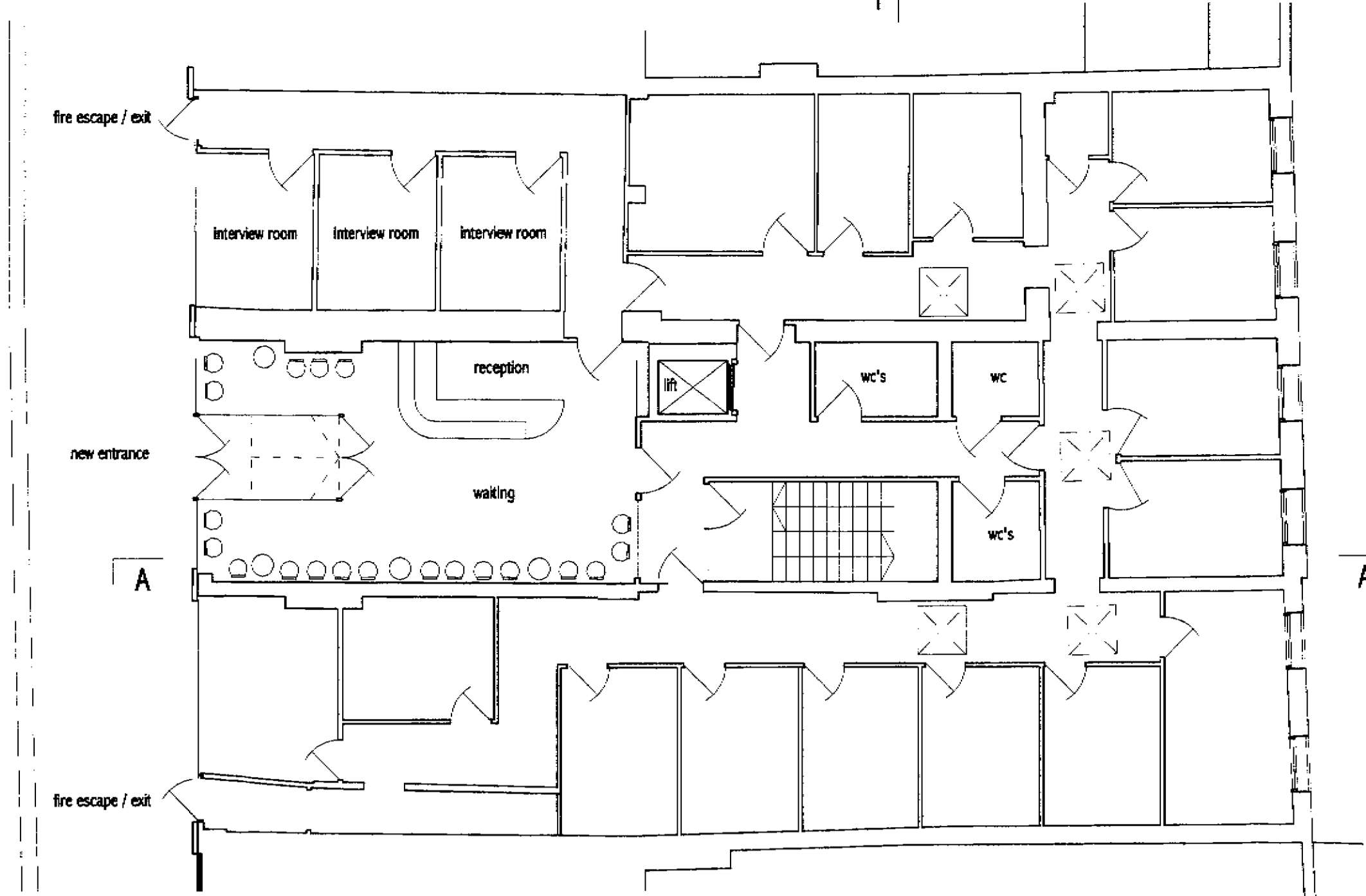


Section 1

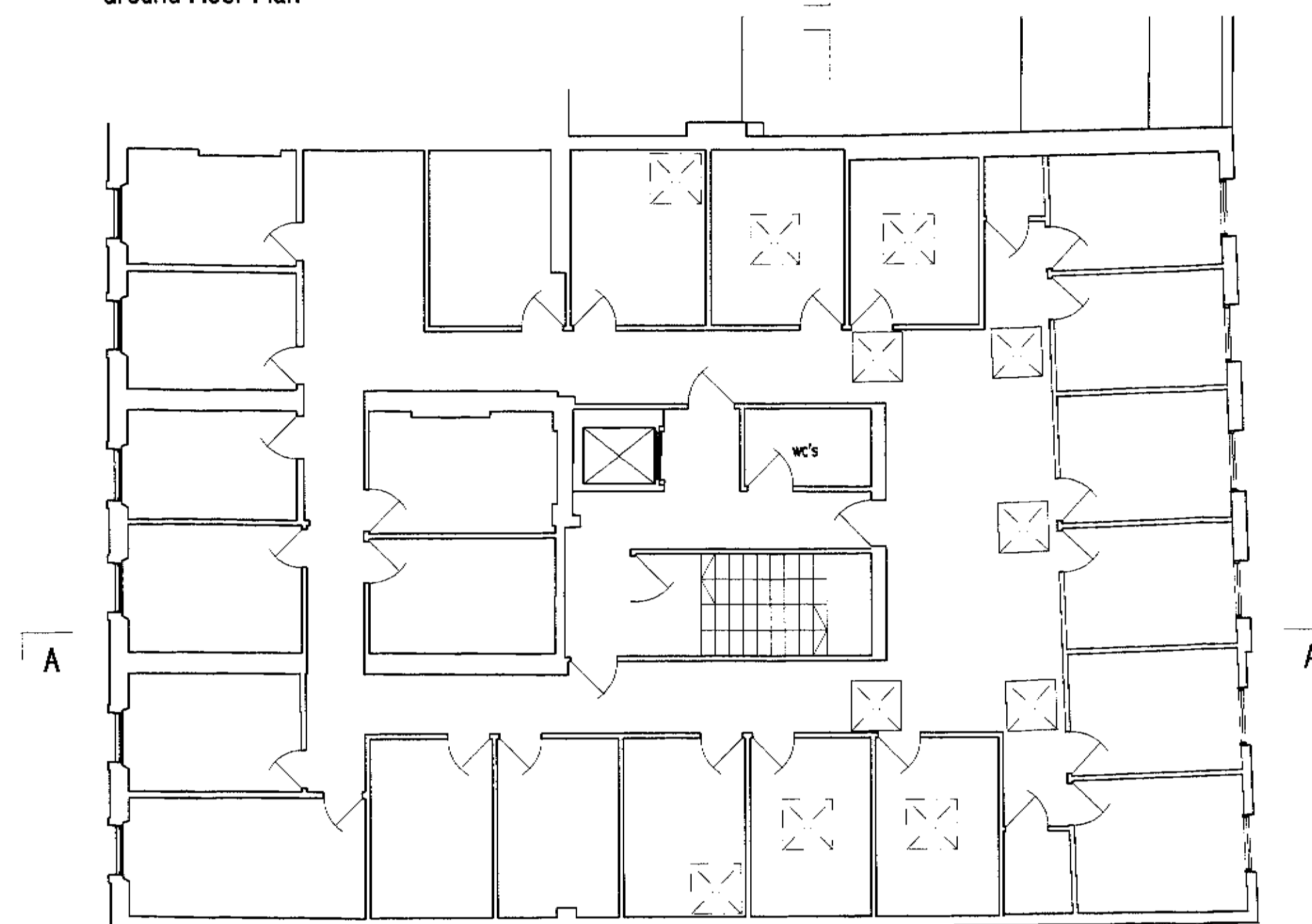


Section A

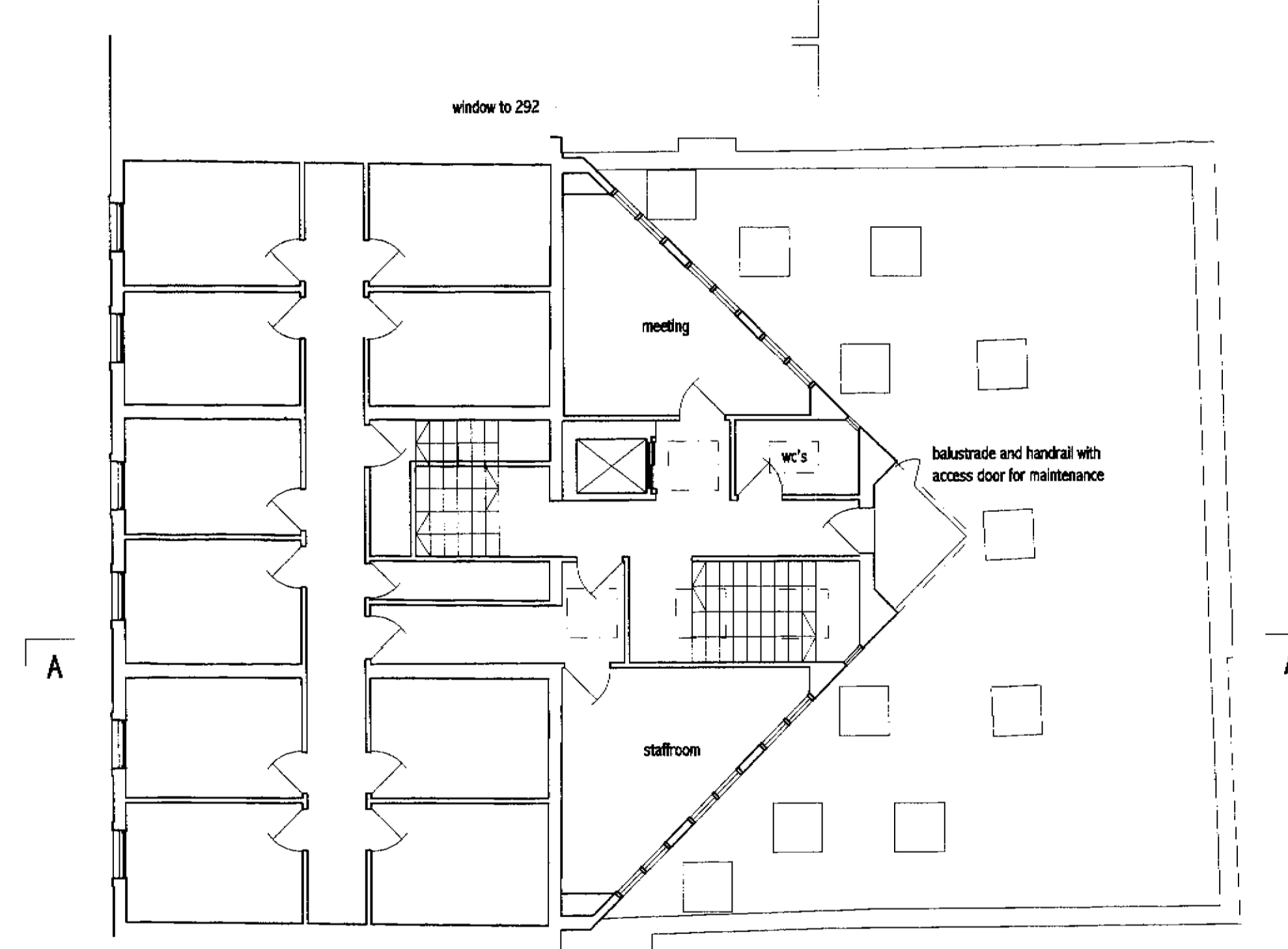
Kilburn High Road  
 access ramp within entrance lobby  
 reception



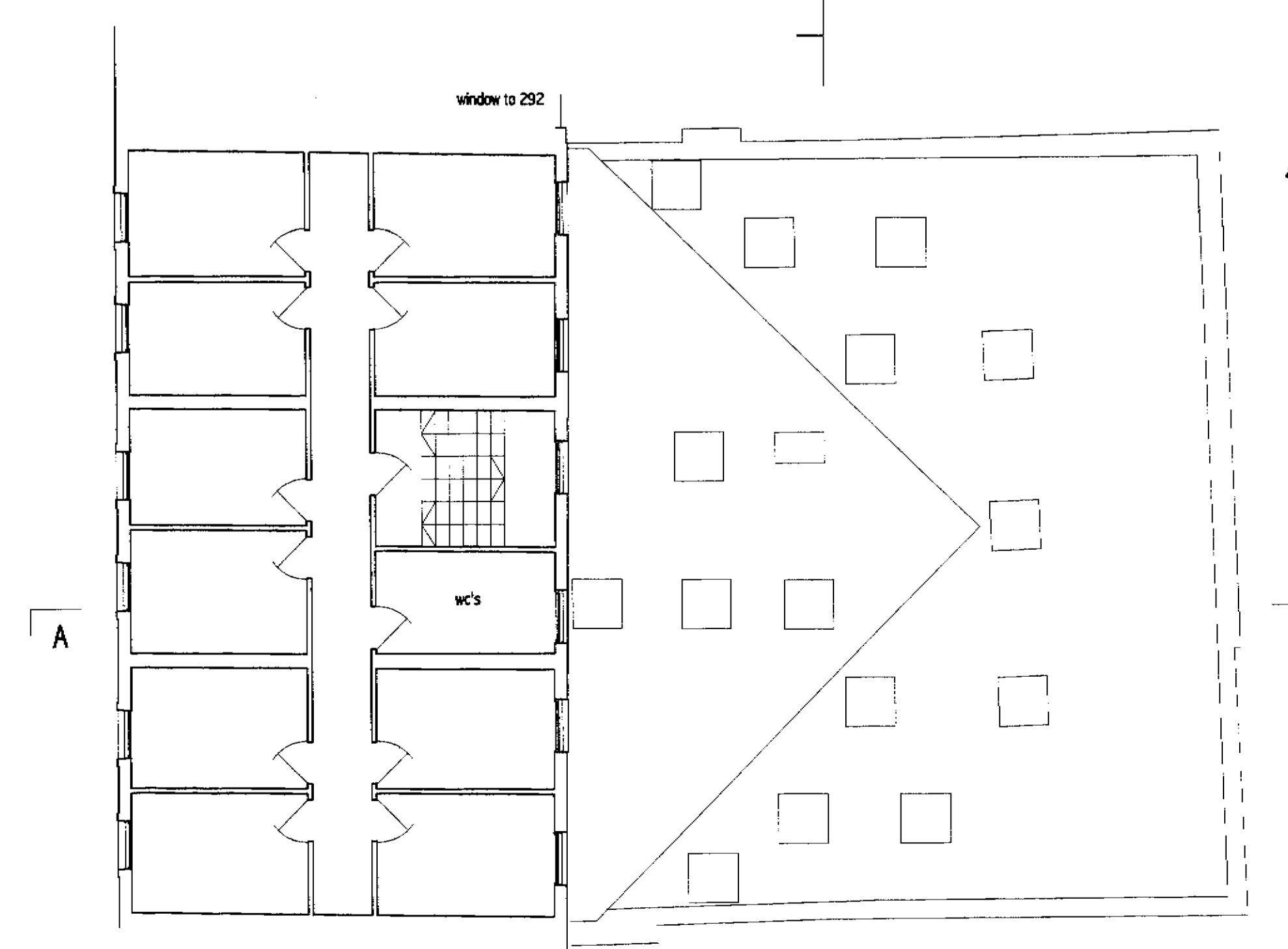
Ground Floor Plan



First Floor Plan

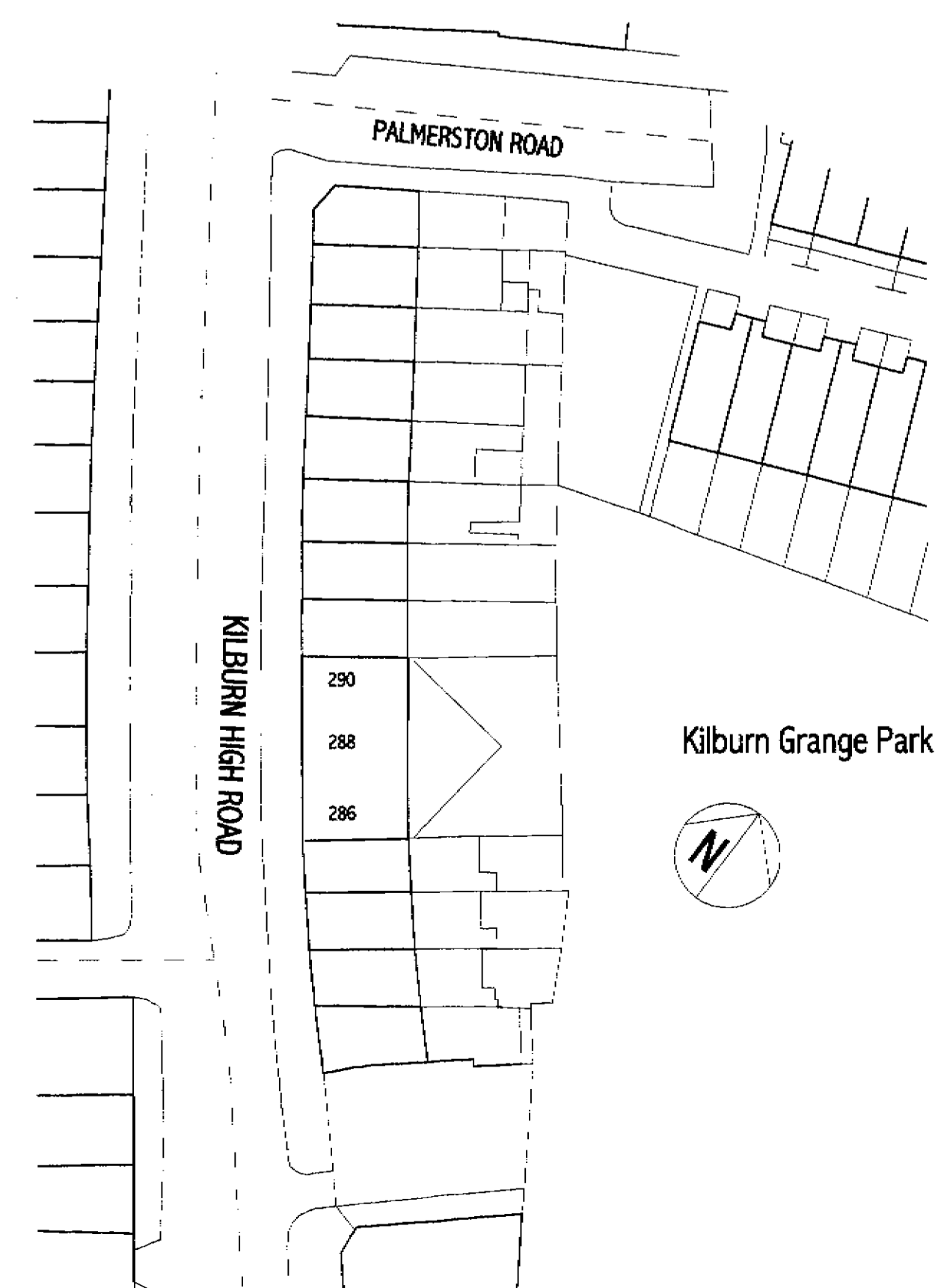


Second Floor Plan



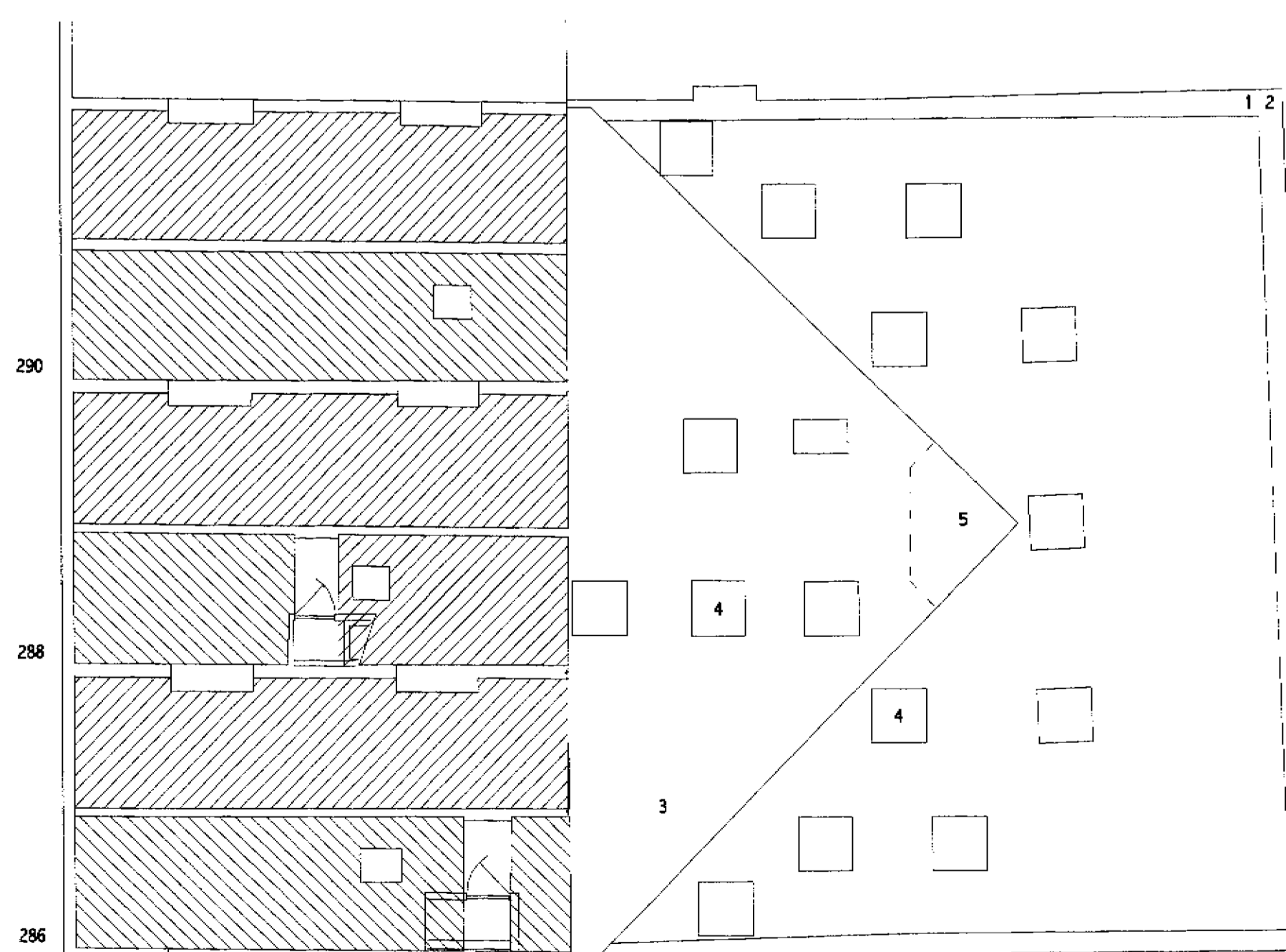
Third Floor Plan

All rooms are 'offices' for single selectors or support staff unless otherwise noted



Block Plan

1:500



Roof Plan

- 1 existing parapet wall height to 290 taken around 286 and 288.
- 2 precast concrete coping to parapet wall
- 3 flat roofing ballbed fascia, laid flat with syphonic drainage
- 4 Rooflights
- 5 Flat roof continues as 'terrace' to 'smoking area'



Location Plan 1:1250

C. 21.02.02. Front elevation. RG  
 B. 27.12.01. near perimeter balustrade omitted, shopfront second floor near extension glazing. RG  
 A. 30.11.01. near scansion to 3rd floor omitted. RG  
 revised

**Goldsmith**  
 chartered architect  
 77 Darnley Road  
 London NW6 3BN  
 Tel: 020 7996 0273  
 Fax: 020 7996 0800  
 www: www.goldsmith.co.uk

286-290 Kilburn High Road

Powell Spencer and Partners

Proposals

158 P02

Scale: 1:100 or as noted  
 Date: AD  
 Drawn by: RG  
 Checked by: C  
 Date: Sep 01