

- Rev.F - 06.04 - Front area steps added
- Rev.E - 11.02 - Back addition existing walls rebuilt
- Rev.D - 08.01 - Back addition and rear area revised
- Rev.C - 02.01 - Back addition and rear area revised
- Rev.B - 10.00 - Front area steps omitted
- Rev.A - 10.00 - Back addition revised

● PLOWMAN SHORT ARCHITECTS
■ 76 LUKE STREET LONDON EC2A 4XF
▲ TEL 020 7739 9131 FAX 020 7739 3687

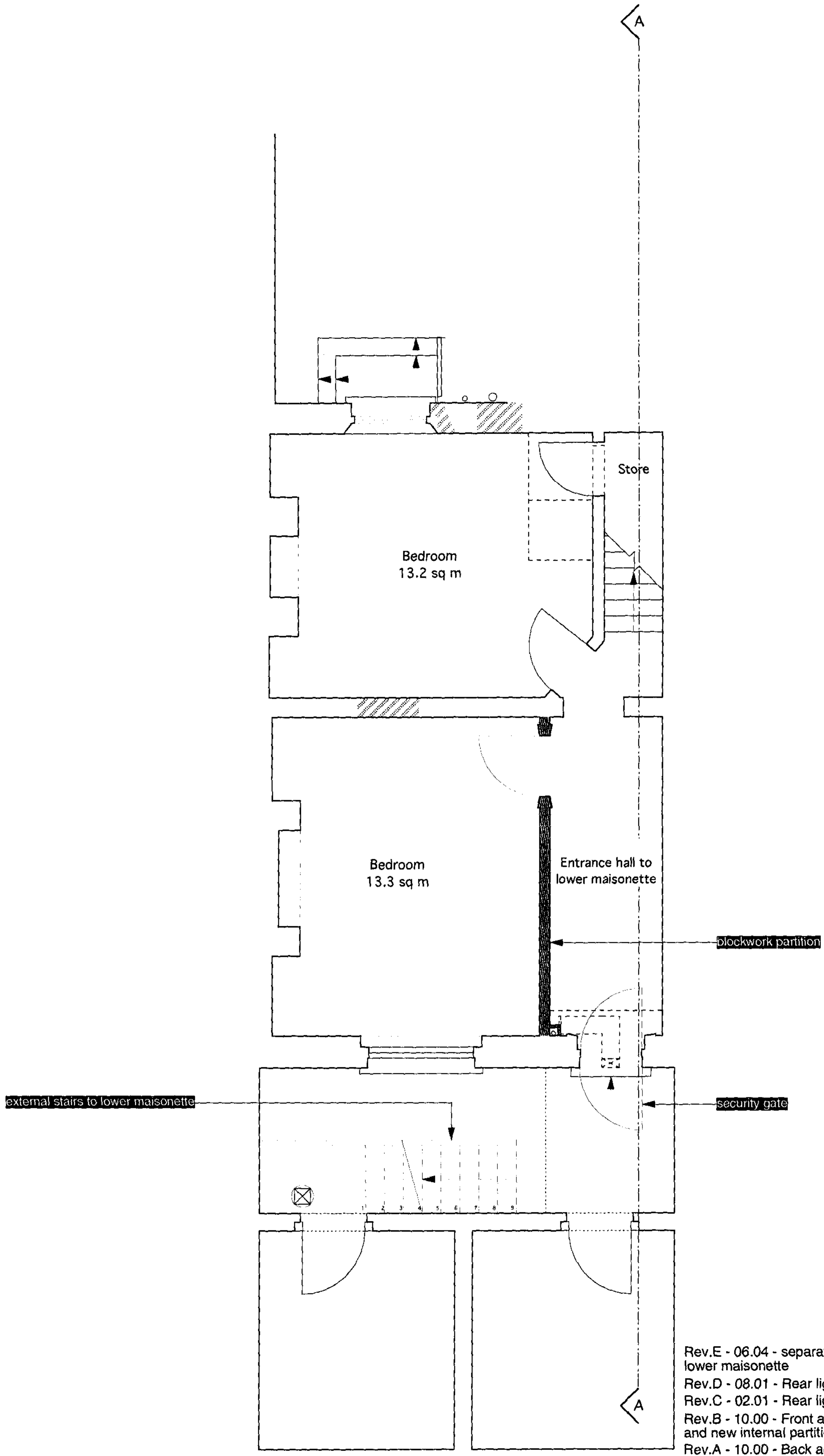
32 Calthorpe Street, WC1
Site Plan as Proposed

SCALE 1: 100

DATE Jan. 2000

DRAWING NUMBER

0004/CS32/P/01F



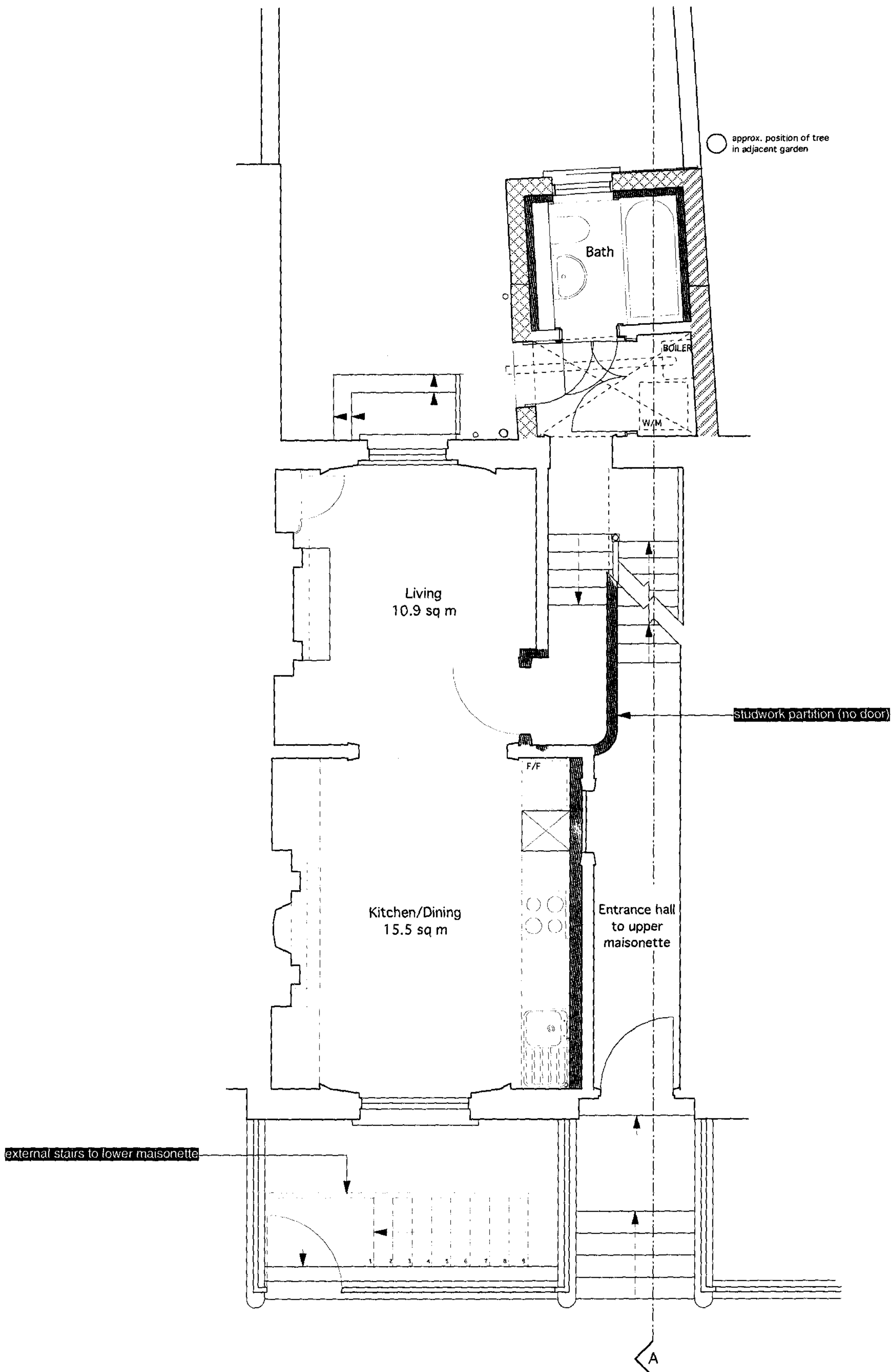
Rev.E - 06.04 - separate entrance formed for lower maisonette
 Rev.D - 08.01 - Rear lightwell revised
 Rev.C - 02.01 - Rear lightwell revised
 Rev.B - 10.00 - Front area steps, security gate and new internal partition omitted
 Rev.A - 10.00 - Back addition revised

● PLOWMAN SHORT ARCHITECTS
 ■ 76 LUKE STREET LONDON EC2A 4XF
 ▲ TEL 020 7739 9131 FAX 020 7739 3687

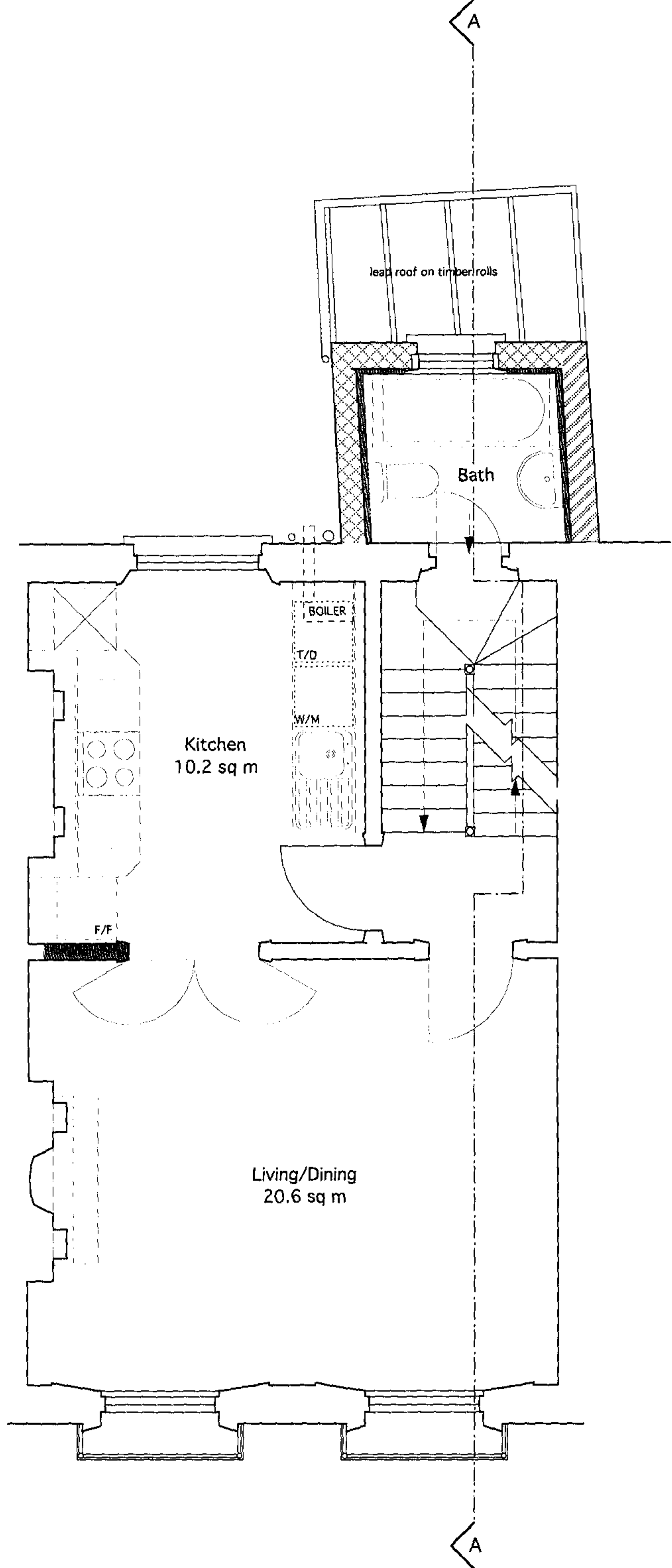
32 Calthorpe Street, WC1
 Basement Plan as Proposed

SCALE 1: 50
 DATE Jan. 2000

DRAWING NUMBER
 0004/CS32/P/02E



- Rev.F - 06.04 - Separate entrance created for upper maisonette
- Rev.E - 11.02 - Back addition existing walls rebuilt
- Rev.D - 08.01 - Rear lightwell and back addition revised
- Rev.C - 02.01 - Rear lightwell and back addition revised
- Rev.B - 10.00 - Front area steps removed; shared hallway retained
- Rev.A - 10.00 - Back addition revised



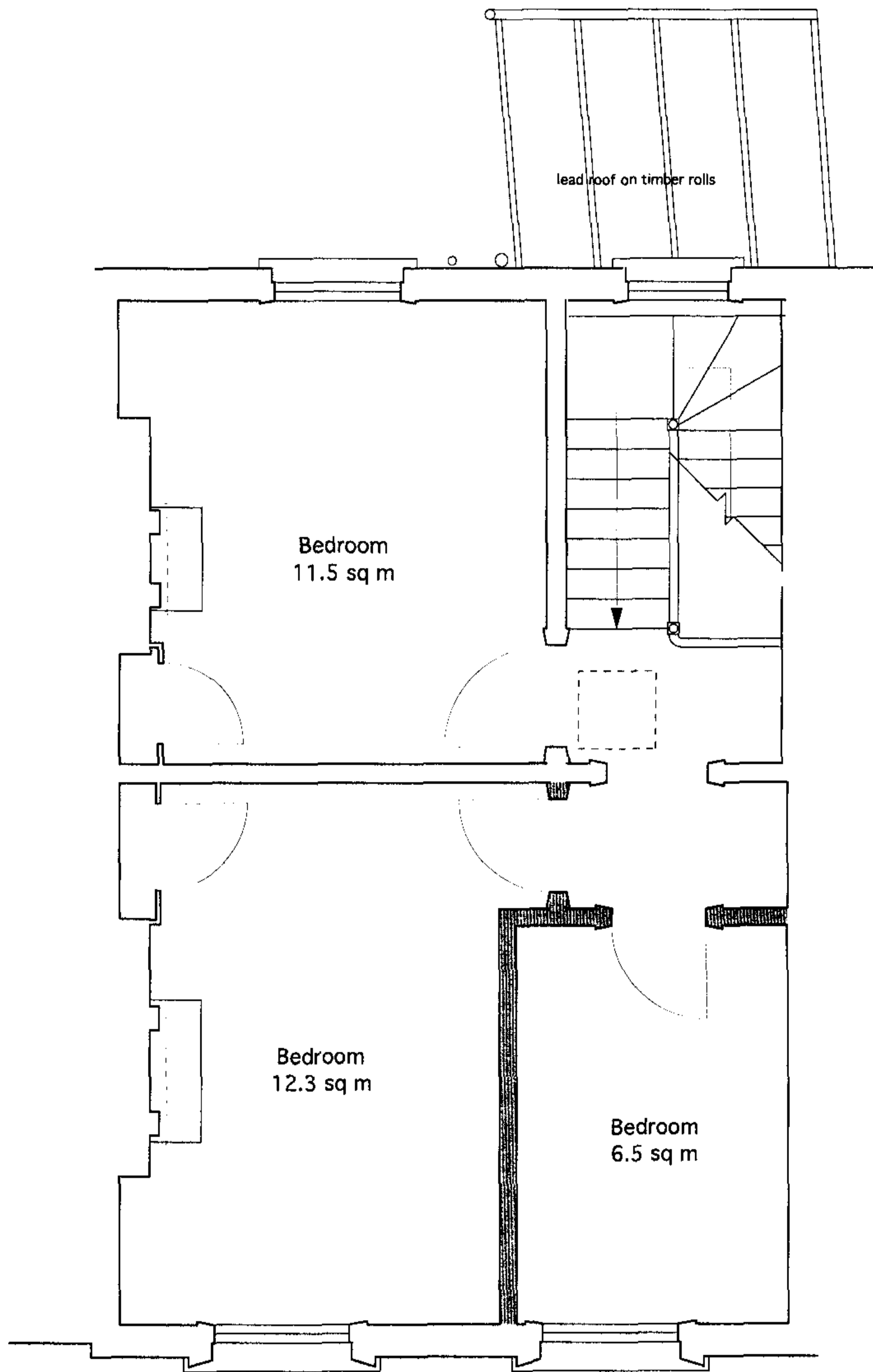
Rev.C - 11.02 - Back addition existing walls rebuilt
 Rev.B - 08.01 - Back addition revised
 Rev.A - 10.00 - Back addition revised

● PLOWMAN SHORT ARCHITECTS
 ■ 76 LUKE STREET LONDON EC2A 4XF
 ▲ TEL 020 7739 9131 FAX 020 7739 3687

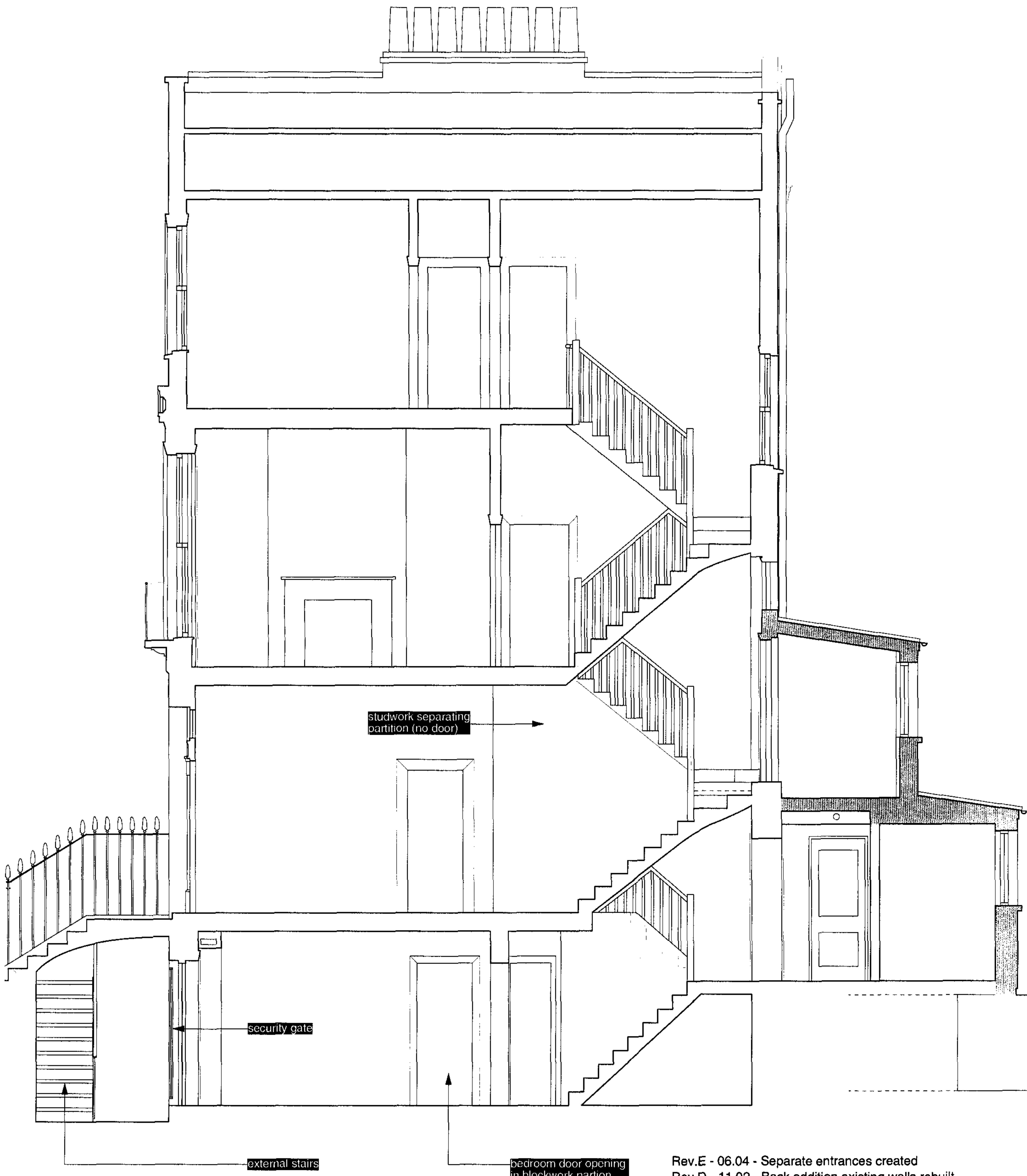
32 Calthorpe Street, WC1
 First Floor Plan as Proposed

SCALE 1: 50
 DATE Jan. 2000

DRAWING NUMBER
 0004/CS32/P/04C



Rev.C - 08.01 - Roof terrace omitted
 Rev.B - 10.00 - New partitions omitted
 Rev.A - 10.00 - Back addition revised



- Rev.E - 06.04 - Separate entrances created
- Rev.D - 11.02 - Back addition existing walls rebuilt
- Rev.C - 08.01 - Back addition revised
- Rev.B - 10.00 - Shared hallway retained
- Rev.A - 10.00 - Back addition revised

● PLOWMAN SHORT ARCHITECTS
 ■ 76 LUKE STREET LONDON EC2A 4XF
 ▲ TEL 020 7739 9131 FAX 020 7739 3687

32 Calthorpe Street, WC1
 Section AA as Proposed

SCALE 1: 50
 DATE Jan. 2000

DRAWING NUMBER
 0004/CS32/P/07E



Rev.B - 06.04 - Front area steps and security gate reinstated
 Rev.A - 10.00 - Front area steps and security gate omitted

● PLOWMAN SHORT ARCHITECTS
 ■ 76 LUKE STREET LONDON EC2A 4XF
 ▲ TEL 020 7739 9131 FAX 020 7739 3687

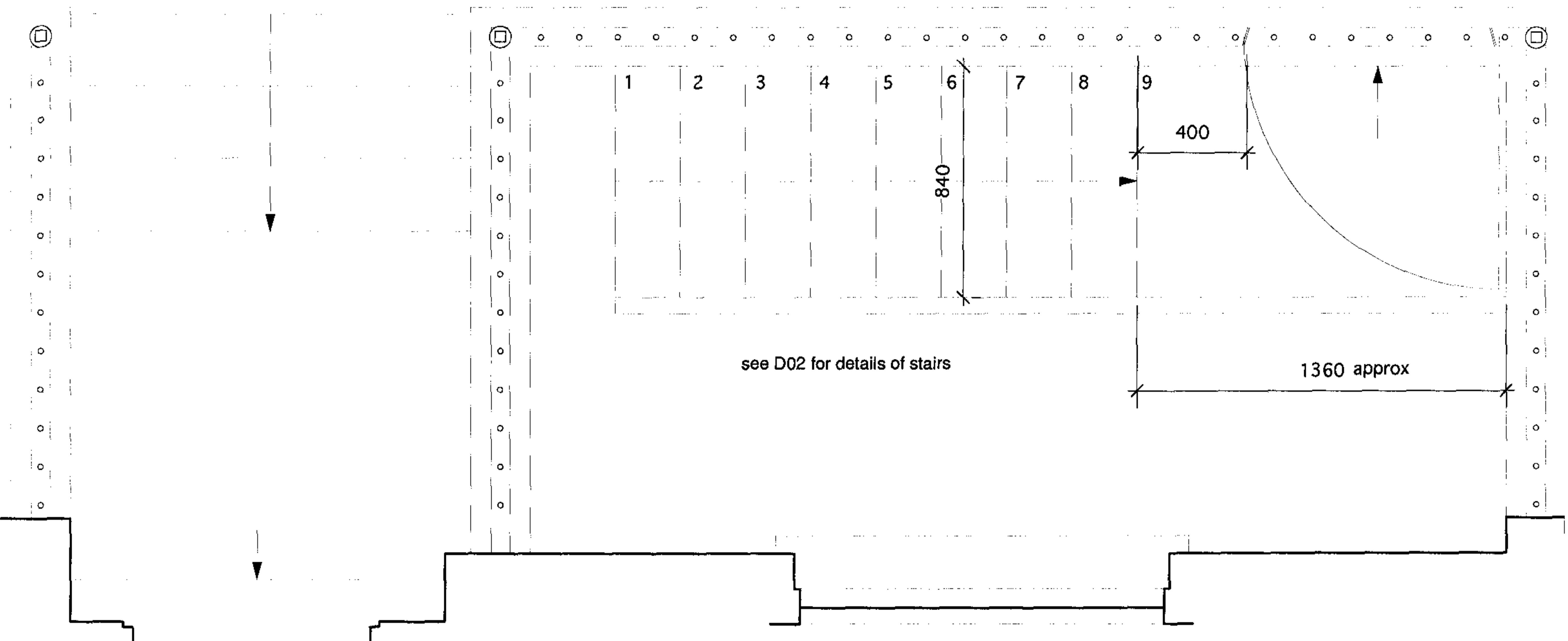
32 Calthorpe Street, WC1
 Front Elevation as Proposed

SCALE 1: 50

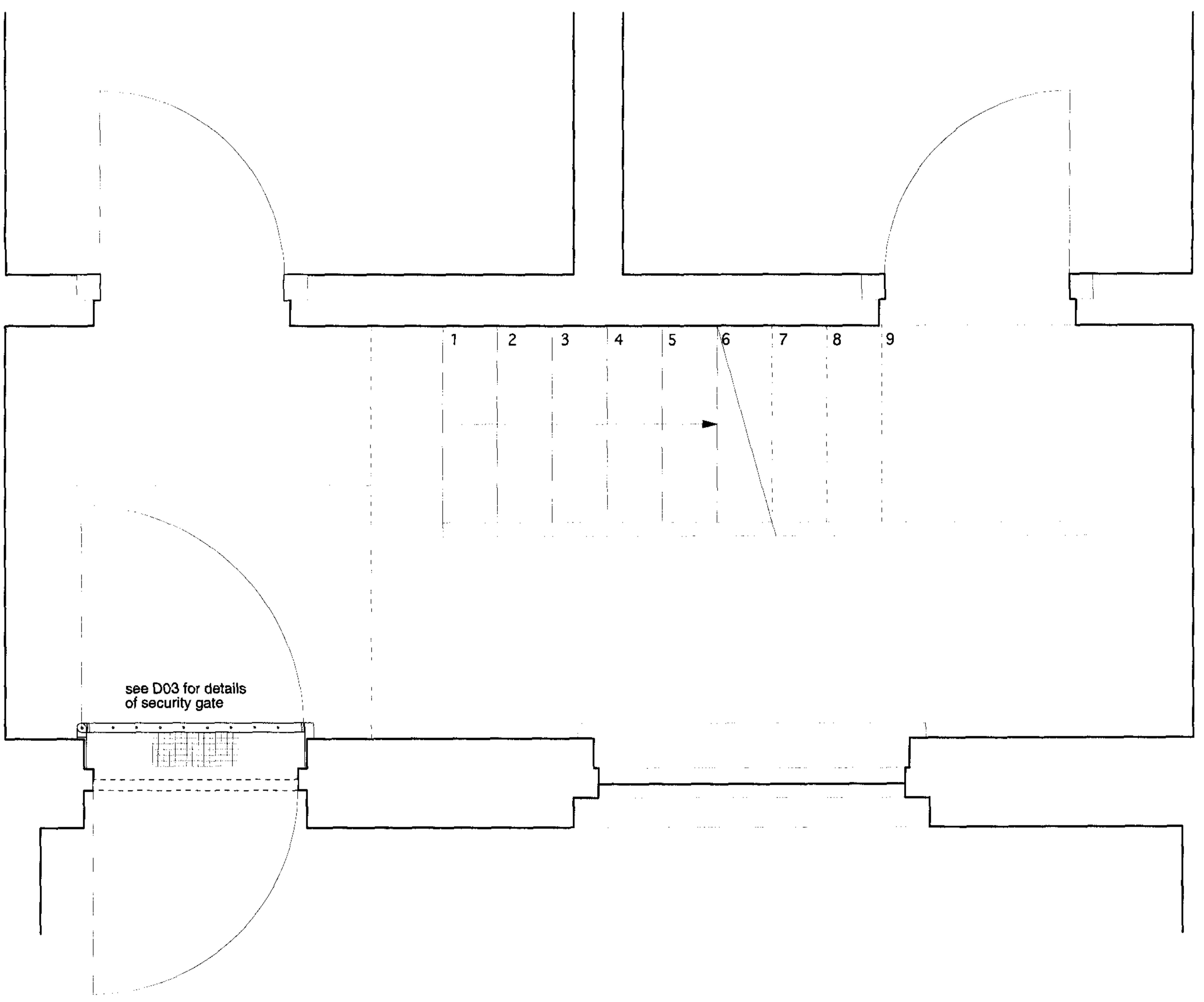
DRAWING NUMBER

DATE Jan. 2000

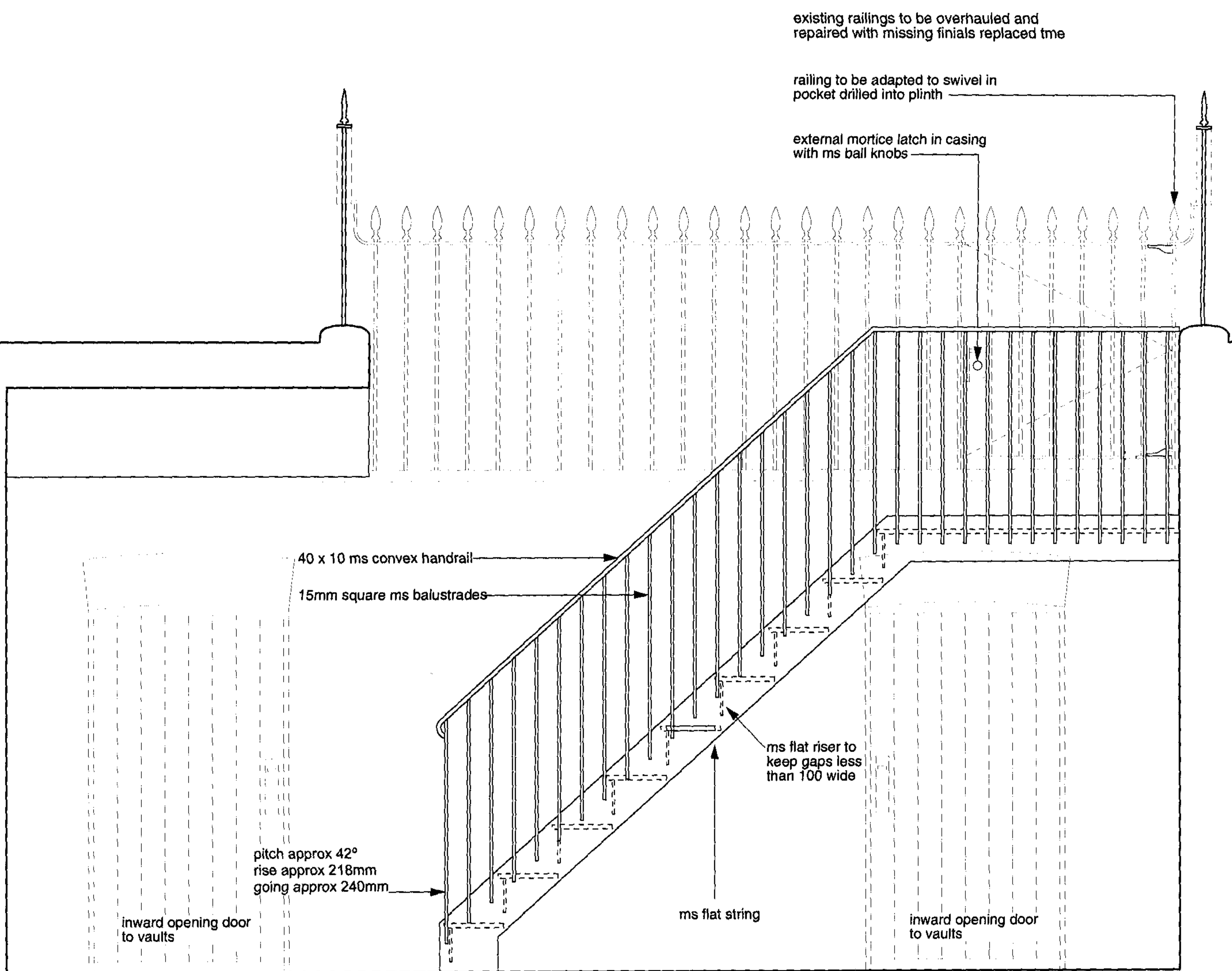
0004/CS32/P/08/B



GROUND FLOOR FRONT AREA PLAN

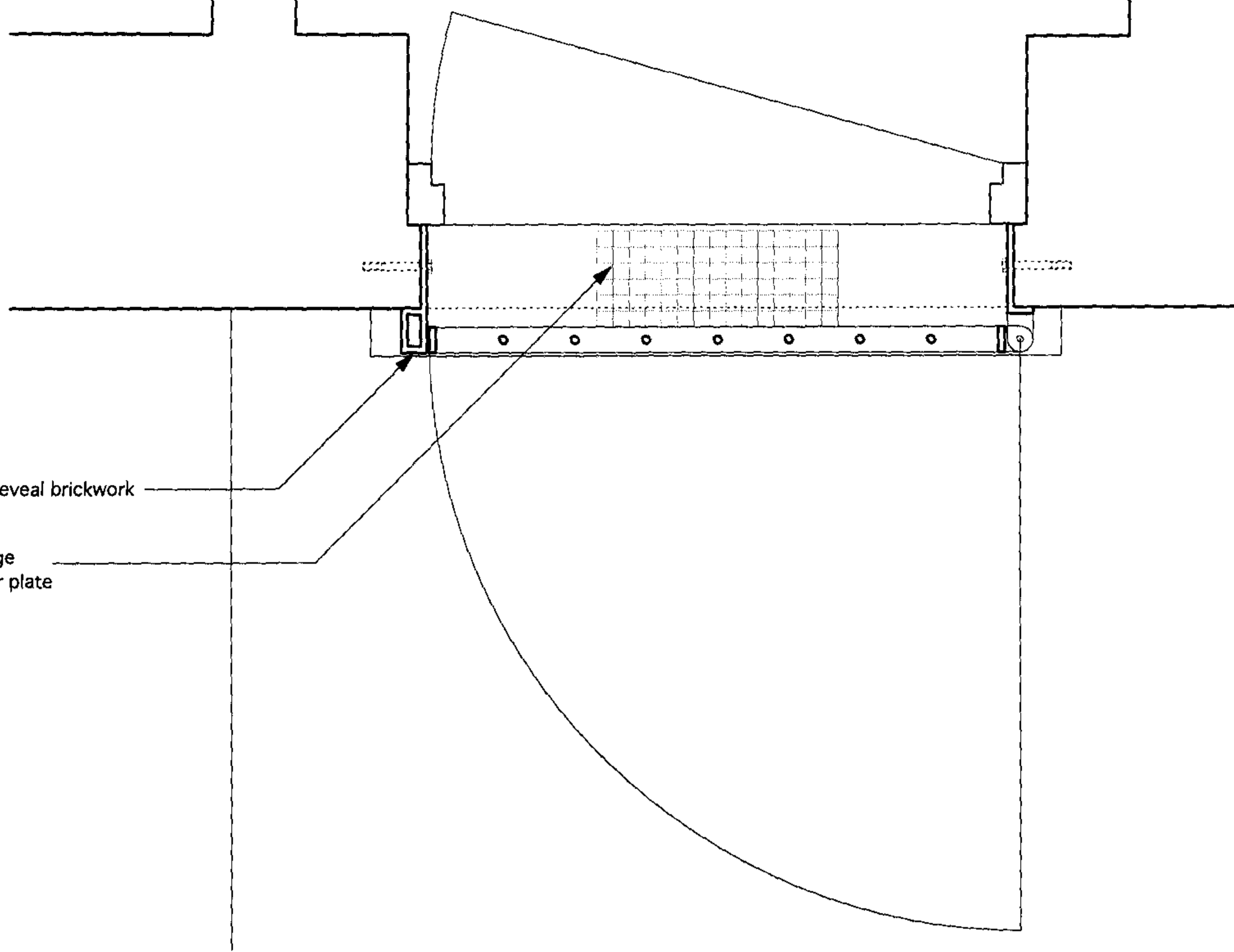


BASEMENT FRONT AREA PLAN



PLAN OF GATE

keep bolted into reveal brickwork
 external letter cage
 fixed behind letter plate



ELEVATION OF GATE

wire mesh to protect snib turn

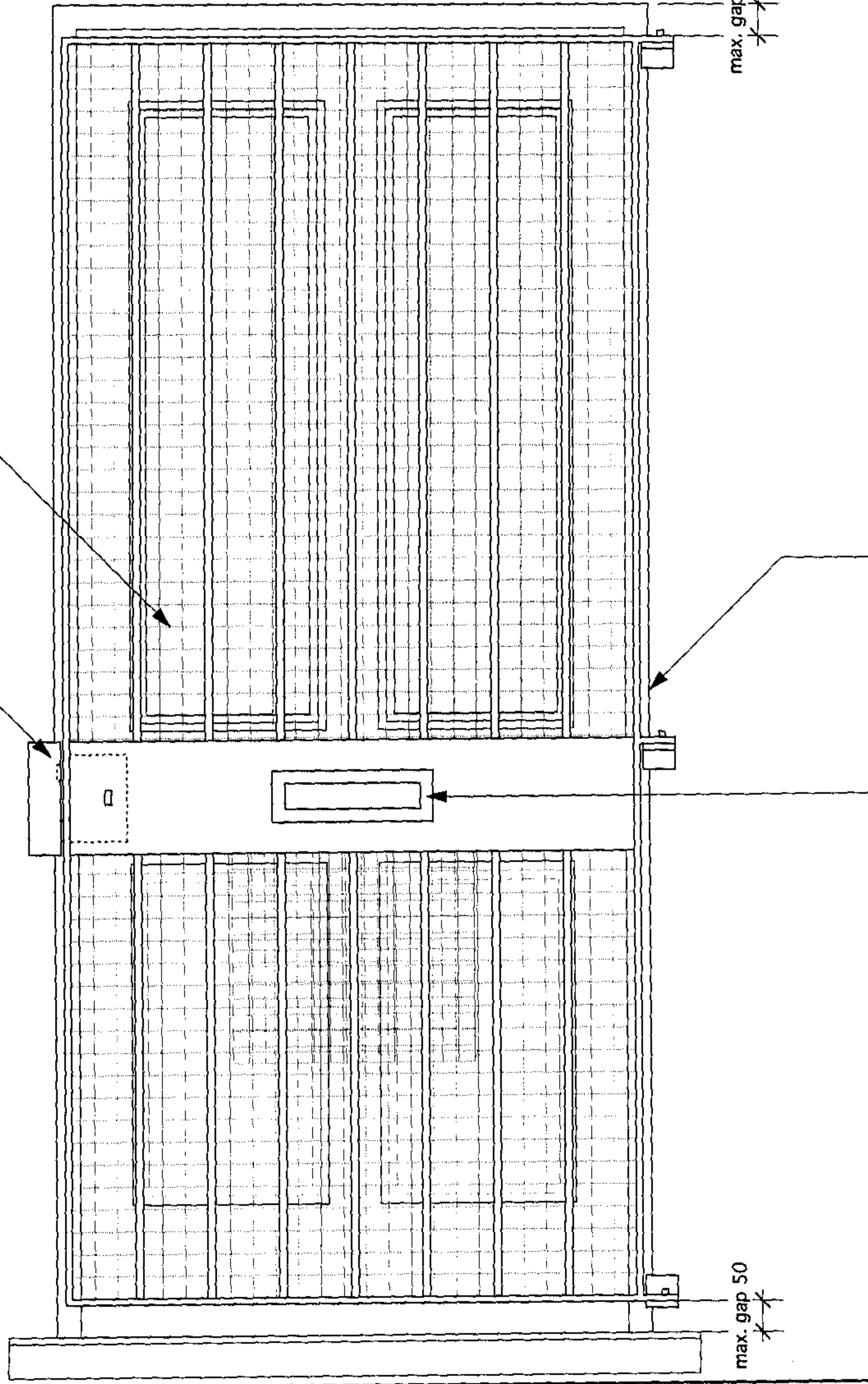
5 lever mortice deadlock
 with snib turn on inside
 - to be suited to door DES

projecting swivel hinges
 bolted to reveal brickwork

letter plates and
 central rails in door
 and in gate to align

max. gap 50

max. gap 50



NOTES:

FRAME: MS FLAT SECTION, APPROX. 10 X 40MM
 BARS: MS RODS, APPROX. 8MM DIA., MAX. GAPS 99MM
 MID-RAIL: MS BOX SECTION, APPROX 40 X 175MM
 KEEP: MS BOX SECTION, APPROX. 40 X 70 X 175MM,
 WELDED TO 10MM FLAT PLATE BOLTED TO BRICKWORK