

3.4 External Lighting

3.4.1 Policy

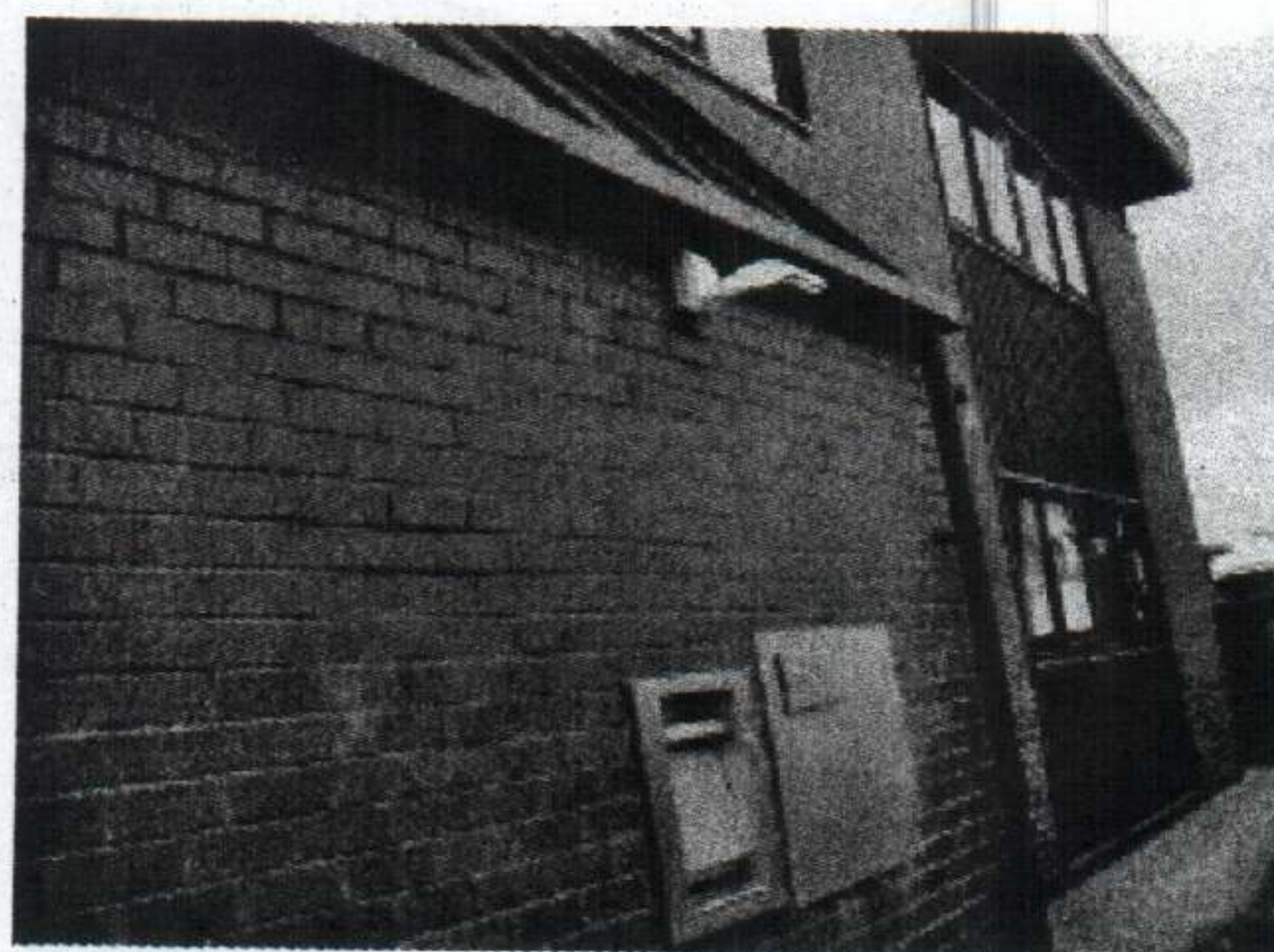
External lighting is required to illuminate the areas directly in front of the main features, e.g. ATMs, night safes, entrances including entry routes etc.

Light levels required for:

- General circulation & external ramp: 50-150 lux.
- Stepped approach: 100-150 lux.
- Car park, ATM, night safe & letter box: 50 lux.

25 min 2000

The required lighting levels should be considered in context with the local surroundings. If the surrounding area is lit to a high illuminance then the area around the ATM for example must also be illuminated to a high level, e.g. 150 lux. Conversely in low illuminance surroundings the area around the ATM can be lit to a low level as well but not less than 50 lux. There is no requirement to install one light fitting over each feature to achieve the light levels noted above. Consideration should be given to the provision and judicious positioning of light fittings over the features to give a spread of light sufficient to meet the light levels required, e.g. one light fitting placed over and between an ATM and an adjacent night safe may be sufficient. Refer to **Lighting** for the methodology for taking light levels.



Photographs 3.4 and 3.5 External Lighting

3.4.2 Specification

Refer to preferred light fitting options as listed below. Where difficulties with the Local Authority prohibits the preferred choice then alternative light fittings in the order listed should be selected.

Preferred options:

- 35w CDM-T – Zumtobel (wall / soffit fixing) ref. BPB8935.049.008
- 70w CDM-T – Zumtobel (wall / soffit fixing) ref. BPB8870.041.008.

Alternative options:

- To be determined by exception on a site specific basis to satisfy the local Authority Planning / Listed Building requirements.

The light fitting should be fitted directly to the external façade (i.e. no backboards / pattresses) and turned horizontally to prevent glare.

The recommendation for the lighting controls is that they be activated by an independent photocell detector, linked to a contactor, and controlled via a time clock control mechanism for local branch management to utilise at their discretion, but in accordance with branch opening hours. Task lighting at ATM's to be operational out with banking hours.

External surface wiring should be carried out using MICC cable with an appropriate coloured sheath to suit the specific building facade tone. Visible wiring and external junction boxes should be avoided wherever possible. Final connections should be carried out using appropriate coloured PVC cable to suit the specific building facade tone.

25 P141 200

Light	Light Fitting	Details
	Luminaire Ref. KK Nightline A Wall / soffit mounted 35W projector. Integral control gear. Suitable mounting height: 2.5 - 5m	Manufacturer - Zumtobel Staff Lighting Ltd Tel.: 020 8589 1821 Reference Number BPB8935.049.008 Dimensions: 214 x 322 x 136mm Lamp: GDM-T 35W / 830 lamp Preferred colour: White Alternate colour options: Black and Silver / Grey
	Luminaire Ref. MM Wall or soffit mounted Superlight 70W Wide beam flood. Integral control gear. Suitable mounting height 2.5 - 10m	Manufacturer - Zumtobel Staff Lighting Ltd. Tel.: 020 8589 1821 Reference Number BPB8870.041.008 Dimensions: 192 x 245 x 170mm Lamp: CDM-TD 70W / 830 lamp

3.5 External Ramps

3.5.1 Policy

Where there is no level access to the principle entrance then ramps that overcome the change in level should be included wherever it is practical to do so WITHOUT major structural alterations. Creation of new doorways or the repositioning of ATMs or night safes is to be considered only by exception. A new ramp should not be constructed specifically for an ATM or night safe unless it is relatively easy to incorporate along with the main entrance ramp. Permanent ramps should be accompanied by steps where space and planning allow.

Where there is sufficient space on the Bank's own property or potentially on the footpath then consider constructing a permanent ramp with steps. If the difference in level between the pavement and the threshold floor level is only slight then consider raising the pavement to feather out the step. This will be subject to Local Authority agreement.

When a permanent ramp cannot be built or the change in level eliminated by raising the pavement consider introducing a portable ramp together with a call bell system for disabled customers to request staff assistance. The minimum width of the pavement must be considered to ascertain whether a portable ramp can be utilised. The call bell system is to be considered in conjunction with the supply of a portable ramp or when access is required to a secondary entrance only, and this combination should only be considered where there is no greater than one existing step into the branch, see call bell below.