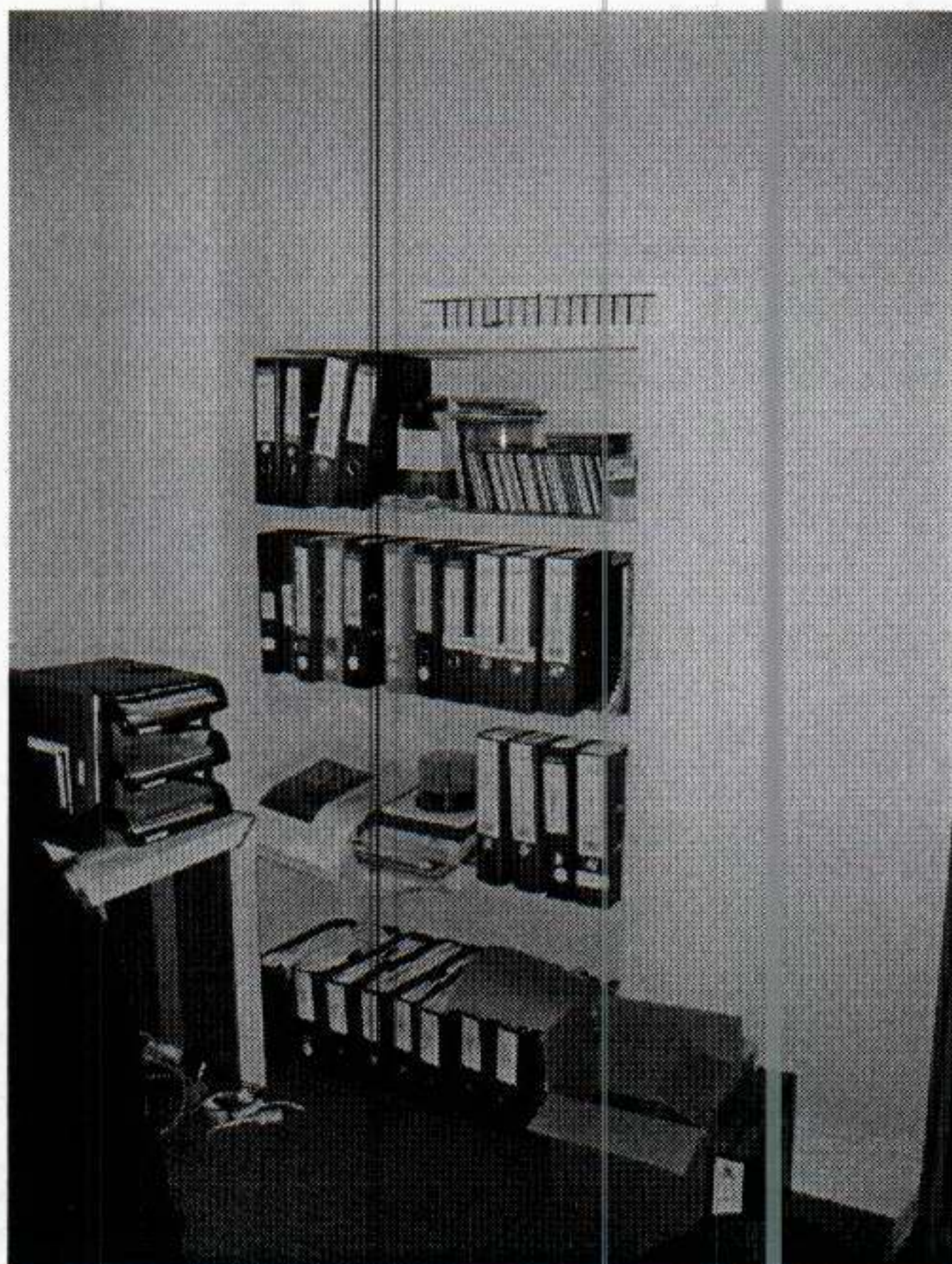


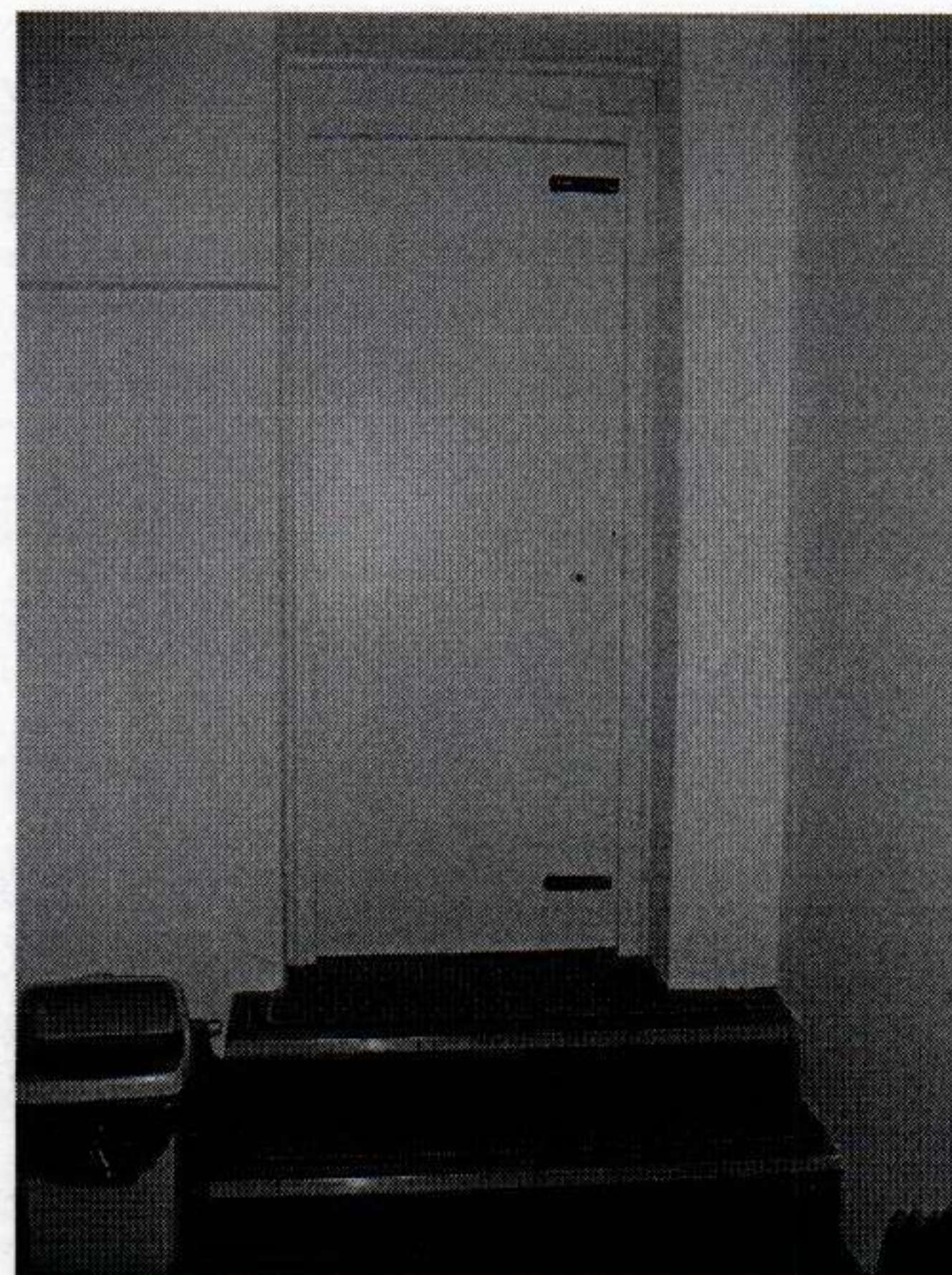
PAR4/PHO/01  
8<sup>th</sup> October 2004

**4 Prince Albert Road, London. NW1 7SN**

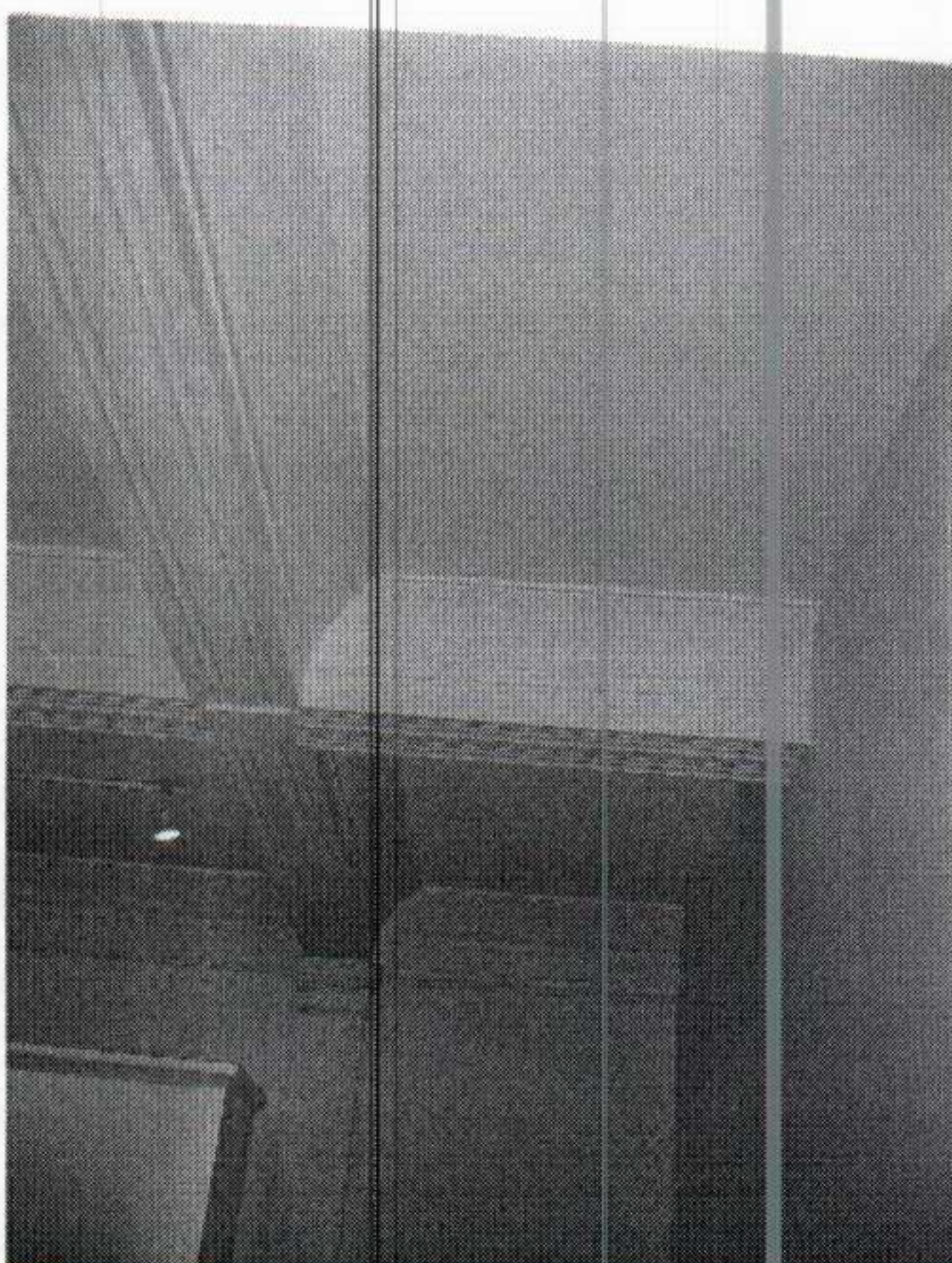
**Existing photographic audit of areas affected by the Application proposals**



**Photo 1**  
Infilled connecting doorway as viewed  
from No. 3



**Photo 2**  
Sealed off connecting door viewed from  
No. 4



**Photo 3**  
Panelled ceiling already divided by  
existing partitions



Gerry Rogerson BA Dip (Hons) Arch RIBA  
gerry@rogersonlimited.com



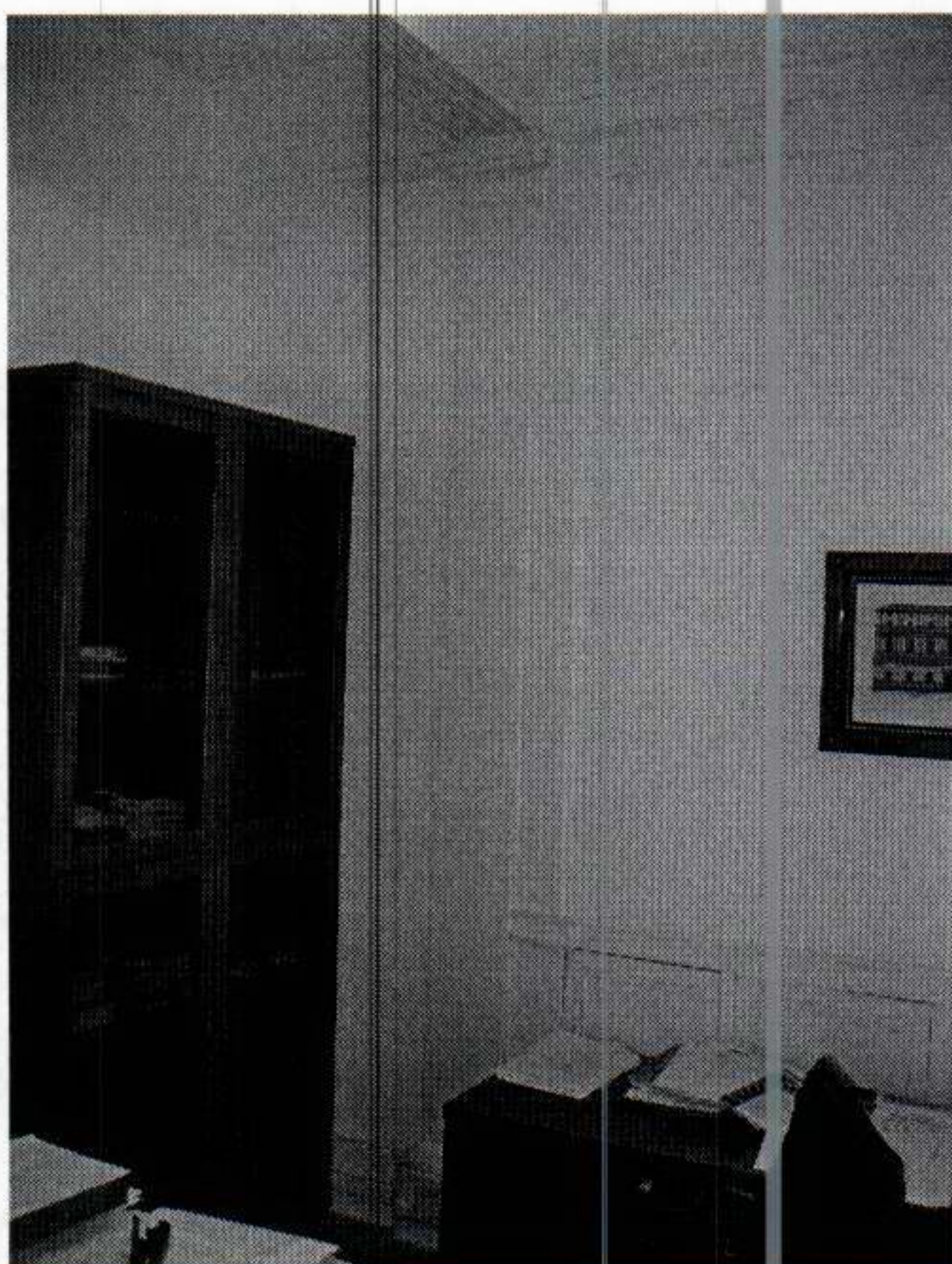
Ali Rogerson BSc MRICS  
ali@rogersonlimited.com

St Elmo  
West Street  
West Mallory  
Kent. ME19 6QX

Tel: +44 (0)1732 845525  
Fax: +44 (0)1732 870964

Company No. 4418314  
VAT No. 781 2961 10





**Photo 4**  
Over panelled wall in office to accommodate partition

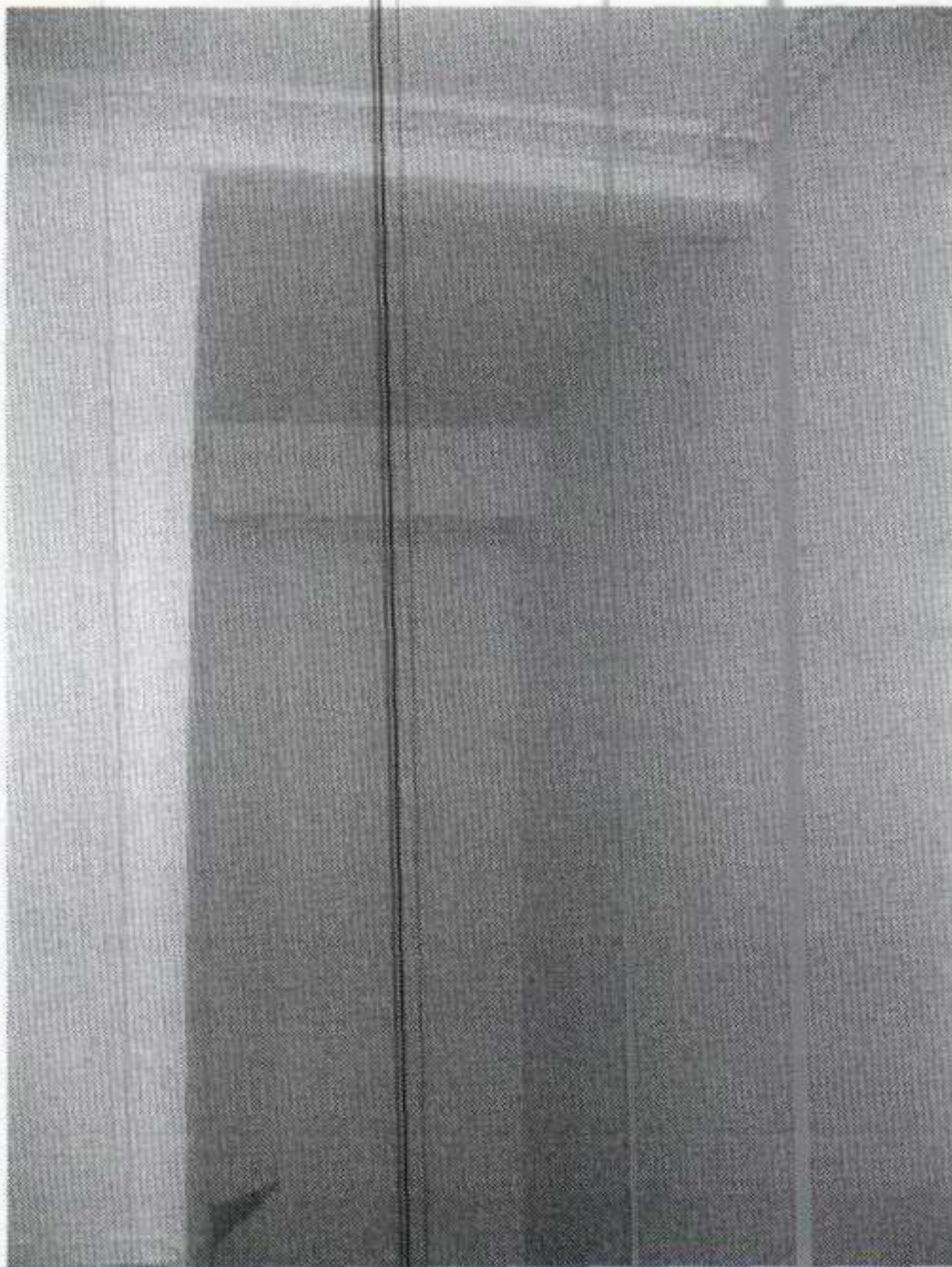


**Photo 5**  
Area of wall in corridor to be over panelled as detail in Photo 4 above





**Photo 6**  
Stairway from ground floor Reception and leading to lower ground floor



**Photo 7**  
Bulkhead and cornice detail over stairway / proposed kitchen door location



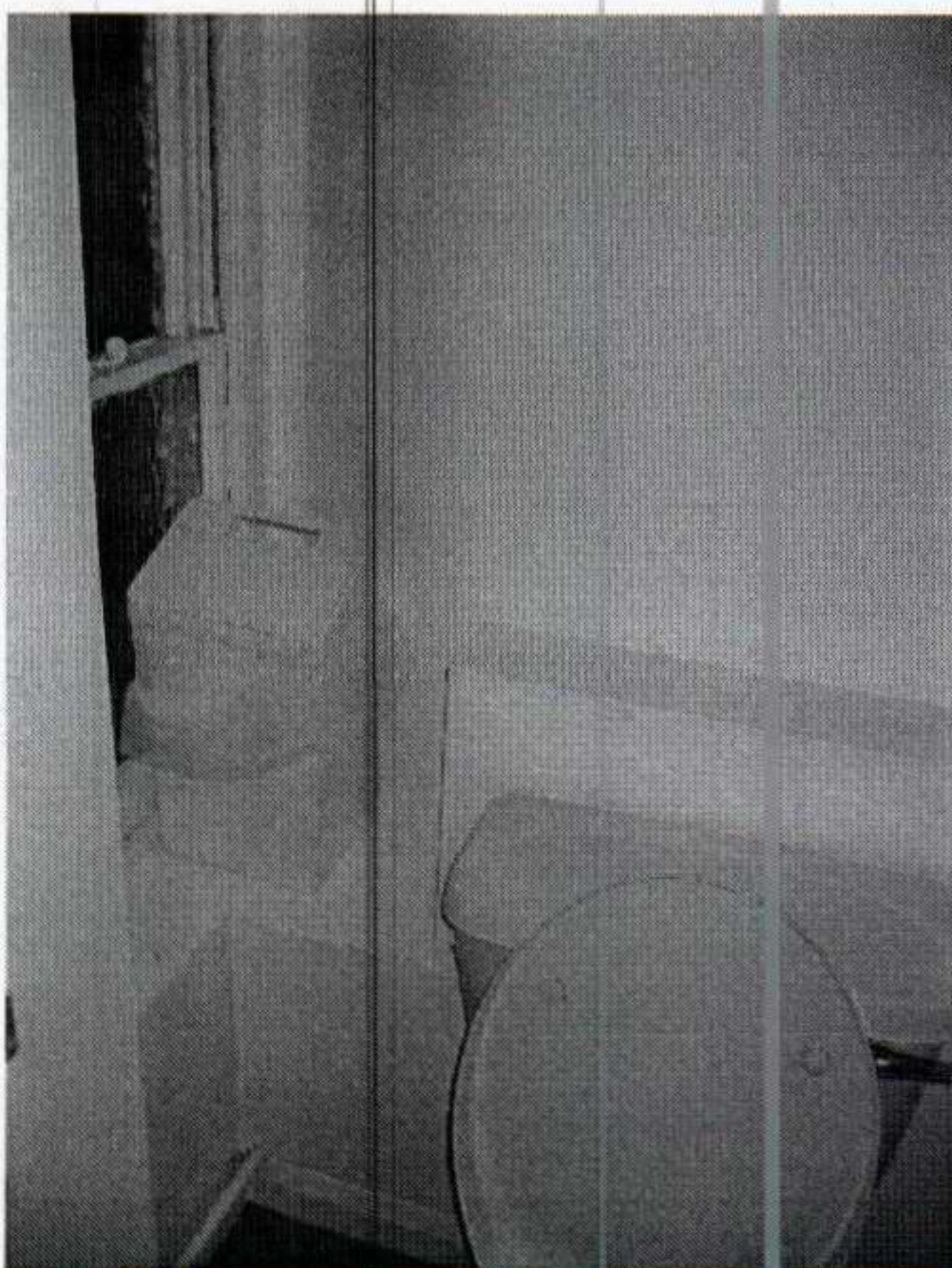
**Photo 8**  
Balustrade base plate and string detail





**Photo 9**

Half landing at floor of main stair flight from Reception



**Photo 10**

Low level casings in Female WC, containing stub stack on soil waste pipe;  
Cold water supply visible between this casing and service riser to left