



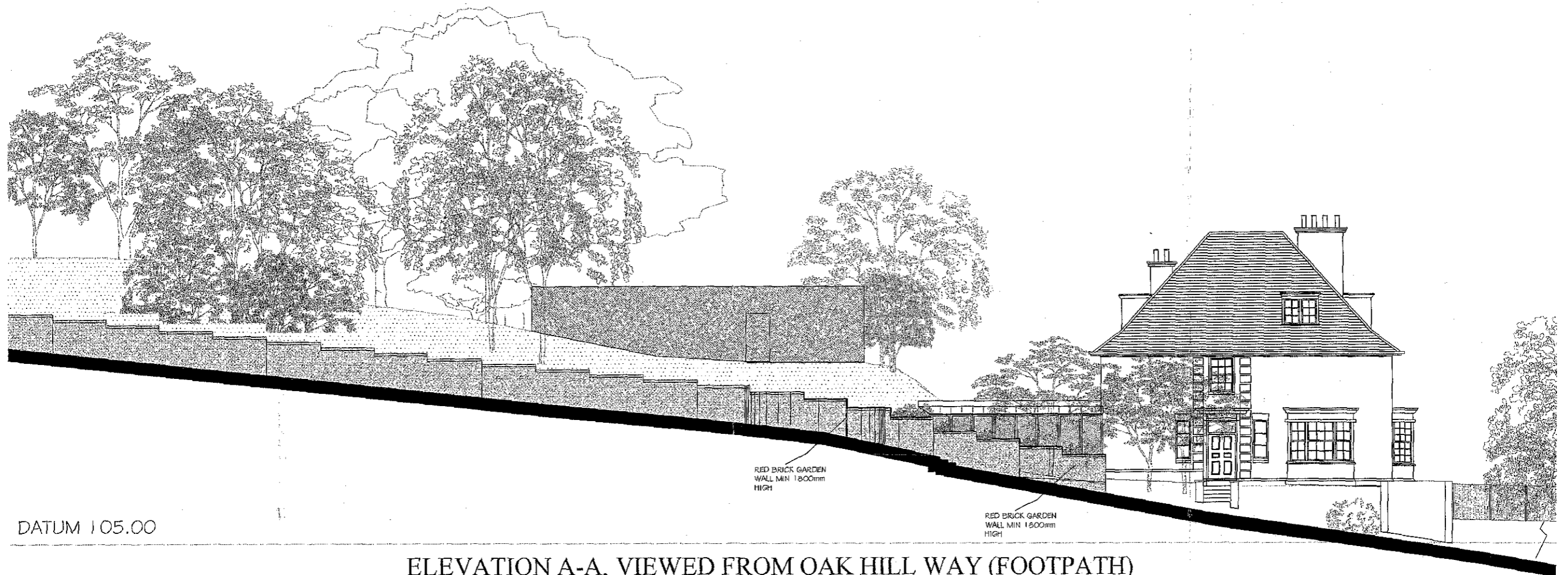
Front Elevation viewed from Oak Hill Avenue



Rear Elevation viewed across high banked wooded copse from Oak Hill Way

SITE PHOTOGRAPHS
SCALE - NTS
22 REDINGTON ROAD
LONDON NW3 7RG
PLANNING 01/05

6788/P49

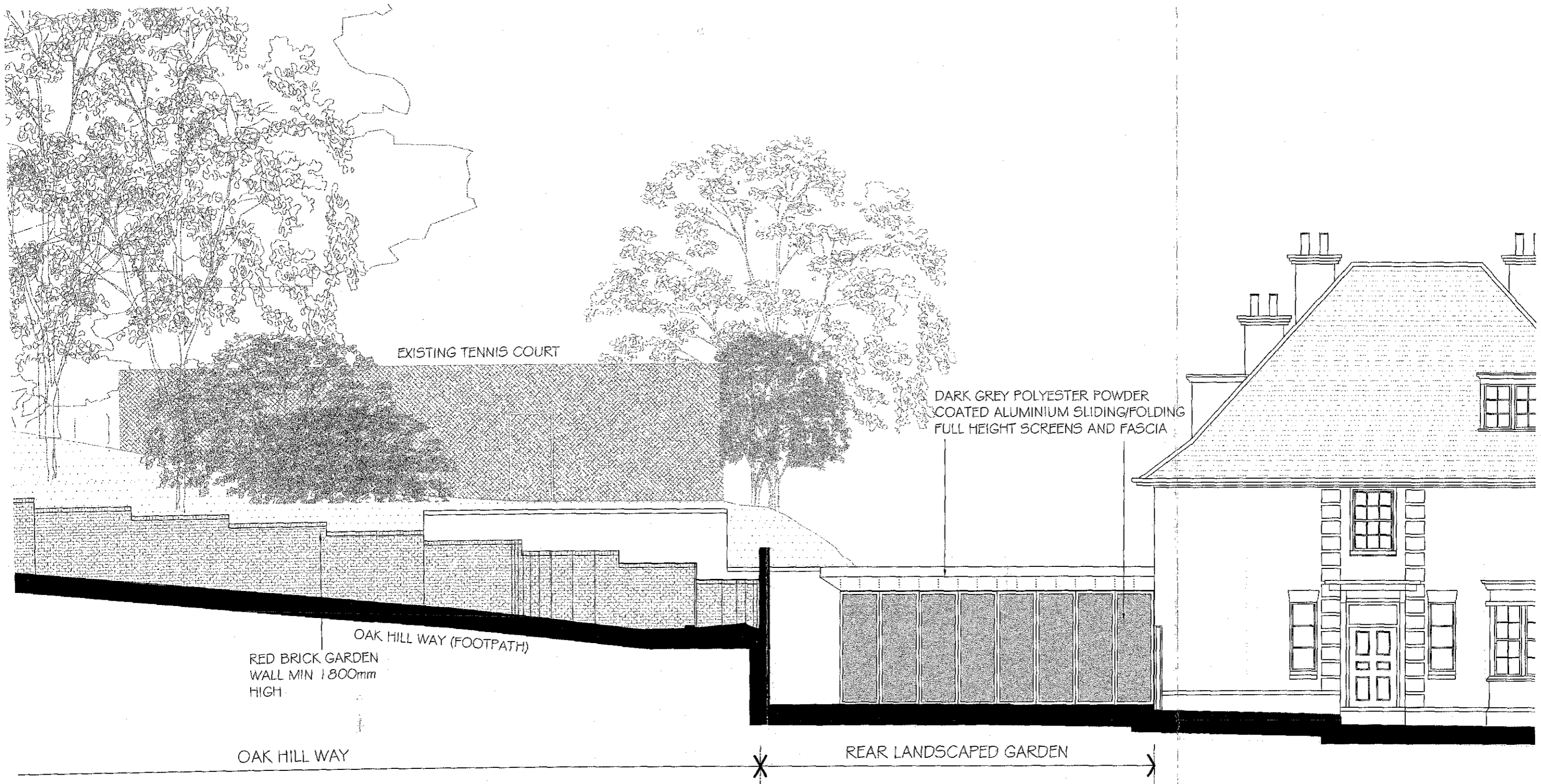


DATUM 105.00

ELEVATION A-A, VIEWED FROM OAK HILL WAY (FOOTPATH)

PREVIOUSLY APPROVED ELEVATION A-A (FOOTPATH)	
SCALE - 1:200	
22 REDINGTON ROAD	
LONDON NW3 7RG	
PLANNING	12/04

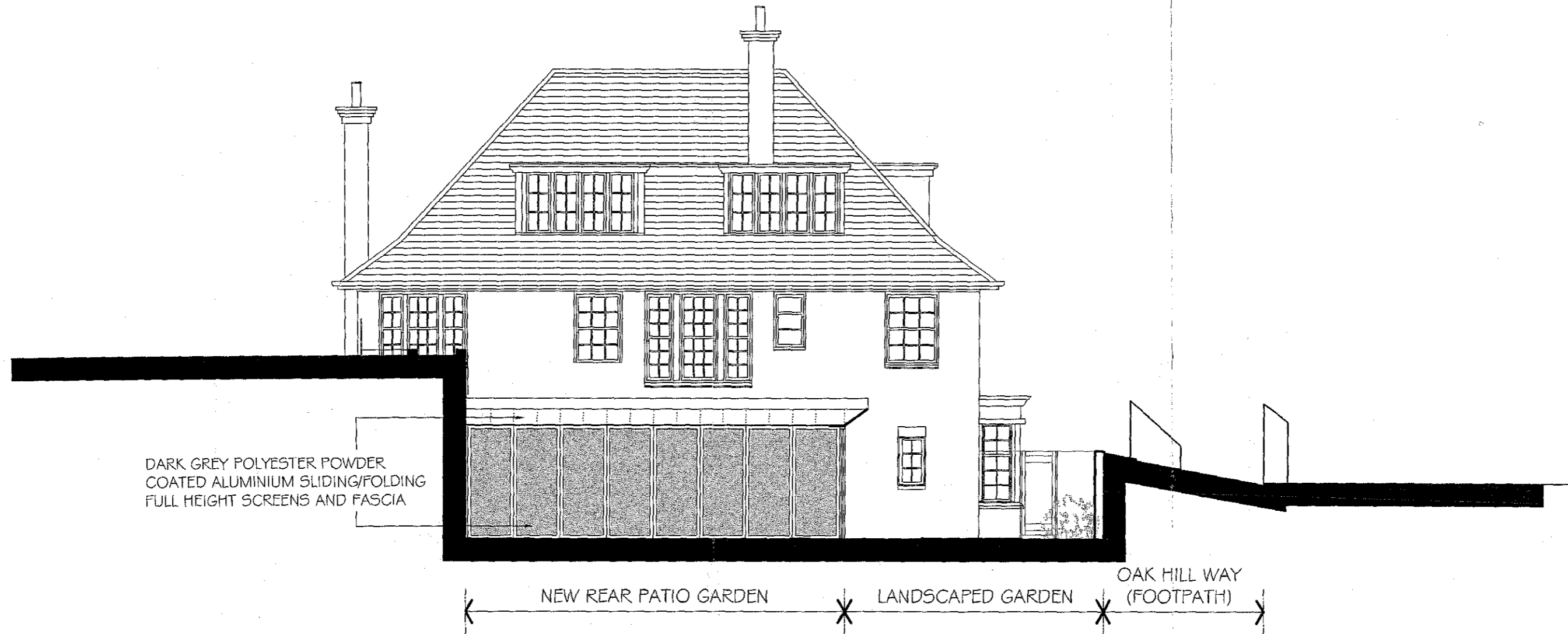
6788/P24



ELEVATION B-B

PREVIOUSLY APPROVED ELEVATION B-B	
SCALE - 1:100	
22 REDINGTON ROAD	
LONDON NW3 7RG	
PLANNING	12/04

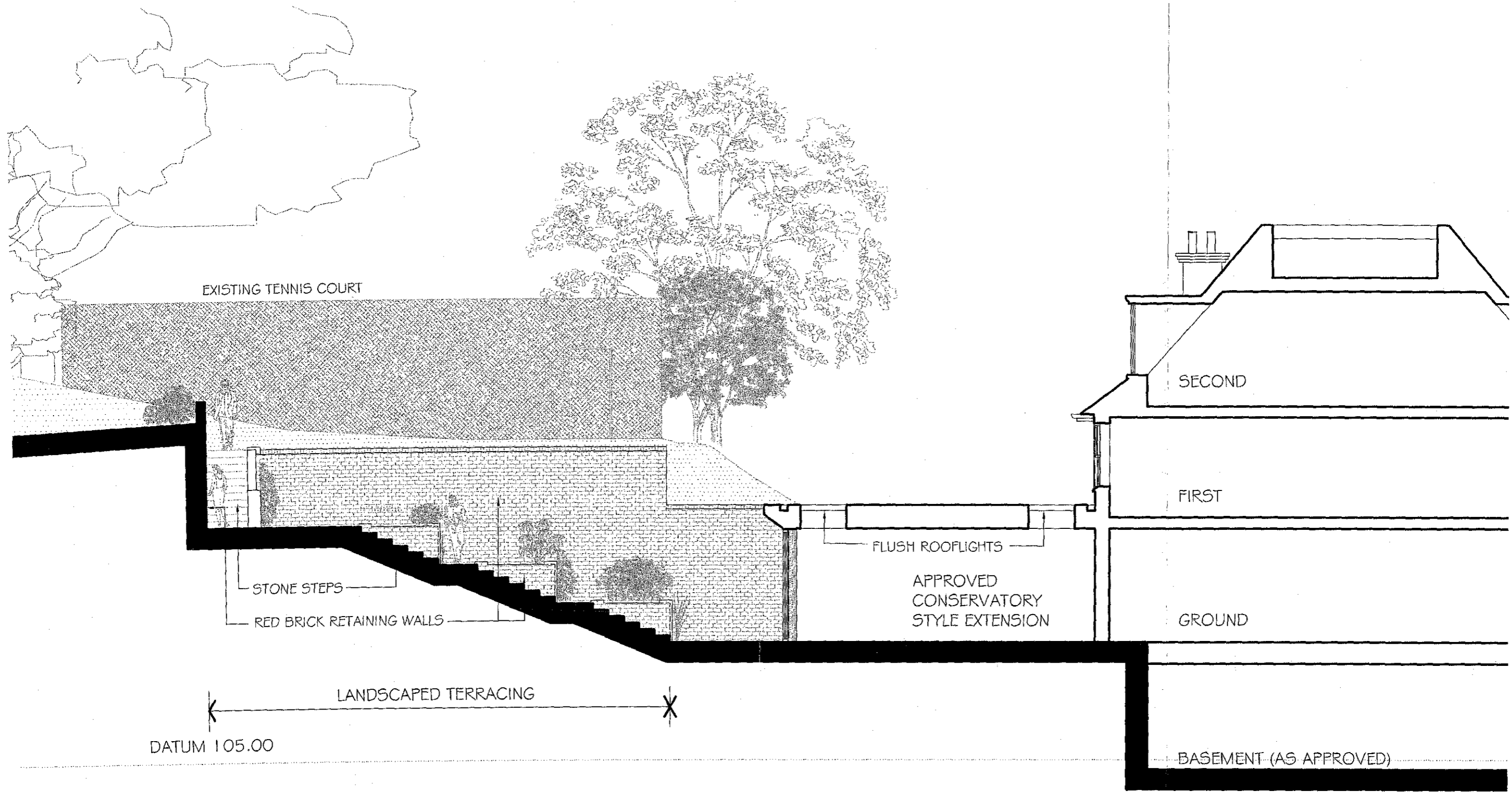
6788/P25



SECTION D-D
REAR ELEVATION

PREVIOUSLY APPROVED REAR ELEVATION (D-D)	
SCALE - 1:100	
22 REDINGTON ROAD	
LONDON NW3 7RG	
PLANNING	12/04

6788/P27



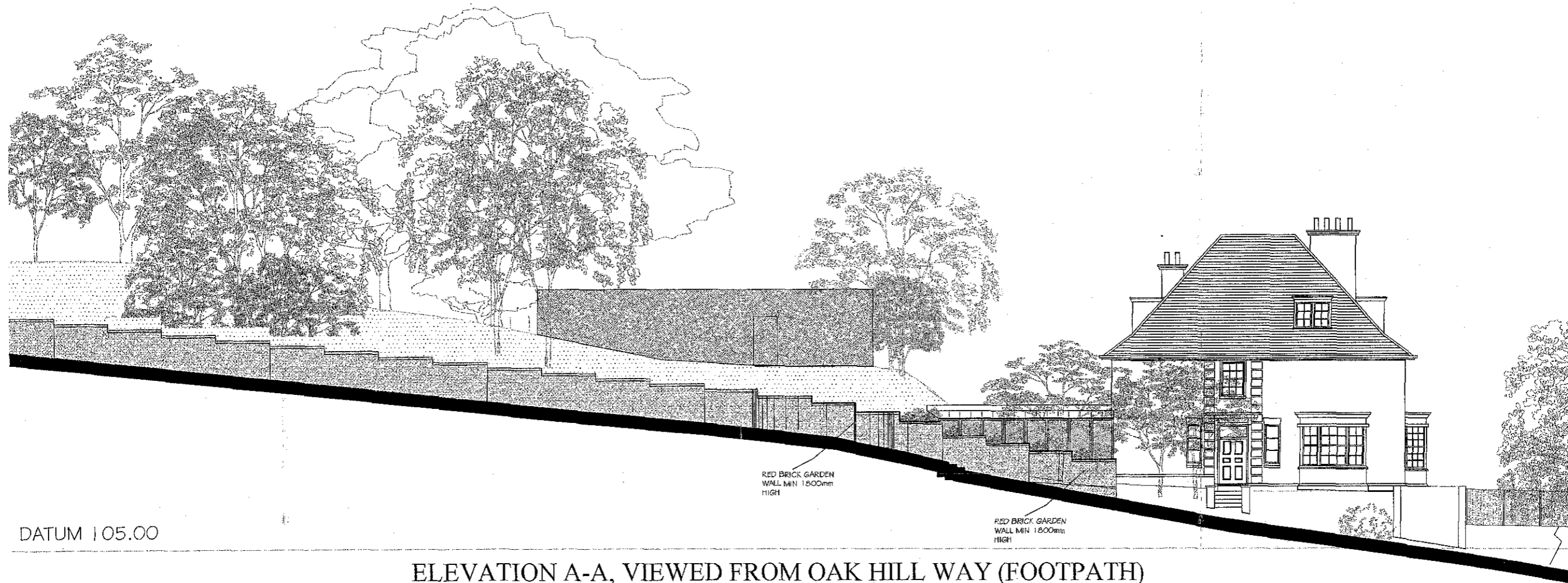
DATUM 105.00

LANDSCAPED TERRACING

SECTION C-C

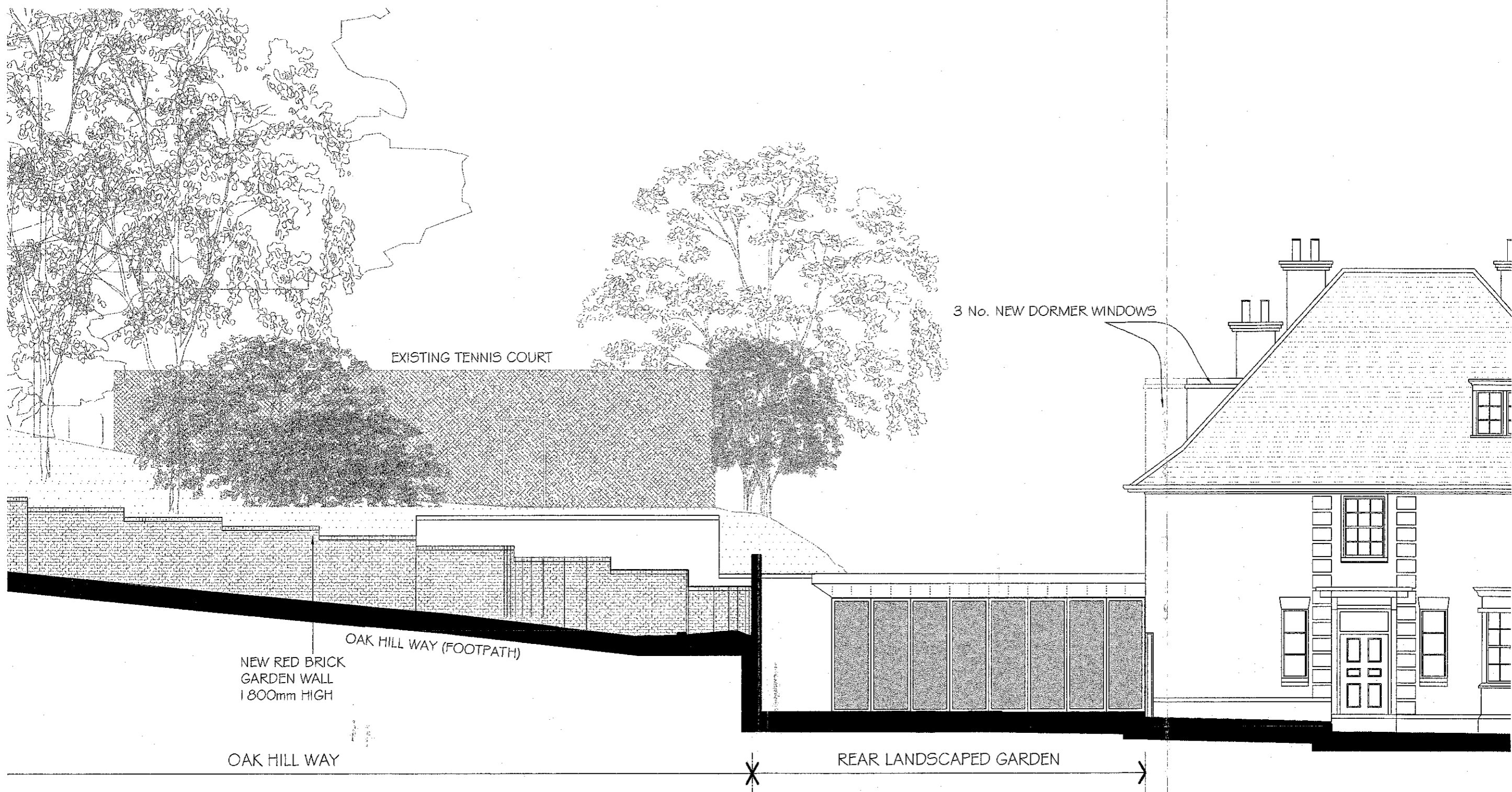
PREVIOUSLY APPROVED SECTION C-C	
SCALE - 1:100	
22 REDINGTON ROAD	
LONDON NW3 7RG	
PLANNING	12/04

6788/P28



PREVIOUSLY APPROVED ELEVATION A-A (FOOTPATH)	
SCALE - 1:200	
22 REDINGTON ROAD	
LONDON NW3 7RG	
PLANNING	12/04

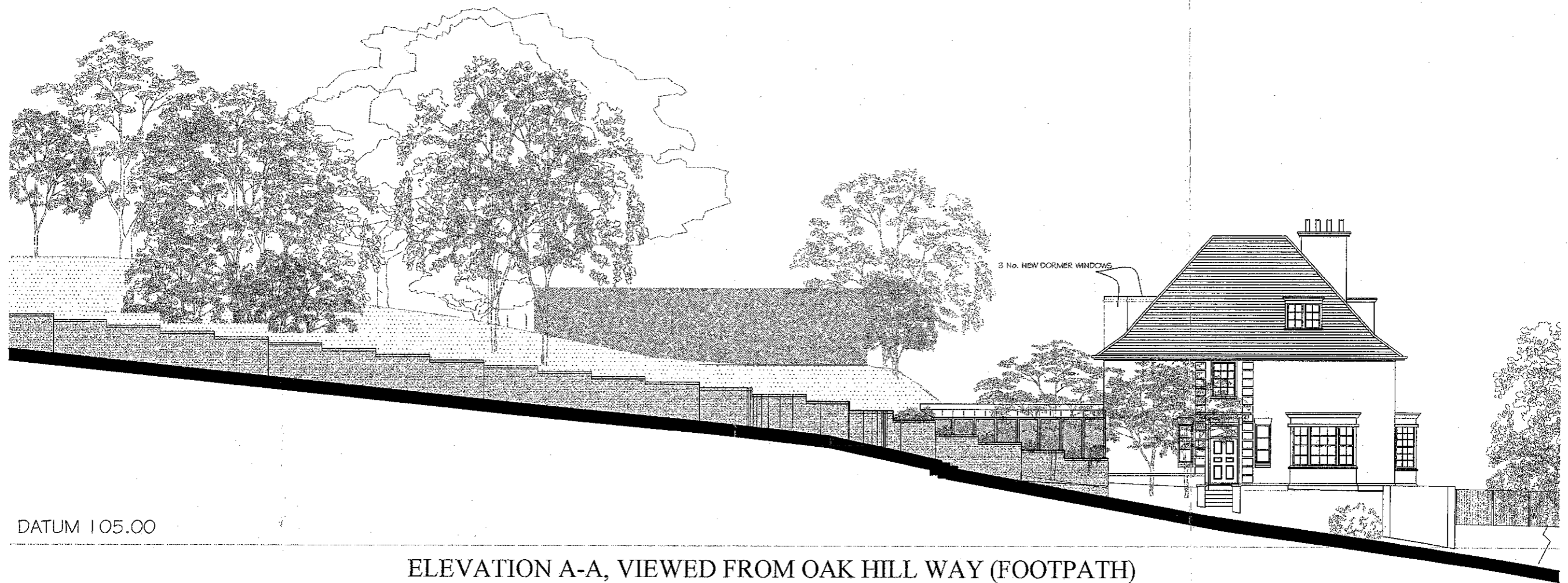
6788/P24



ELEVATION B-B

PROPOSED ELEVATION B-B	
SCALE - 1:100	
22 REDINGTON ROAD	
LONDON NW3 7RG	
PLANNING	12/04

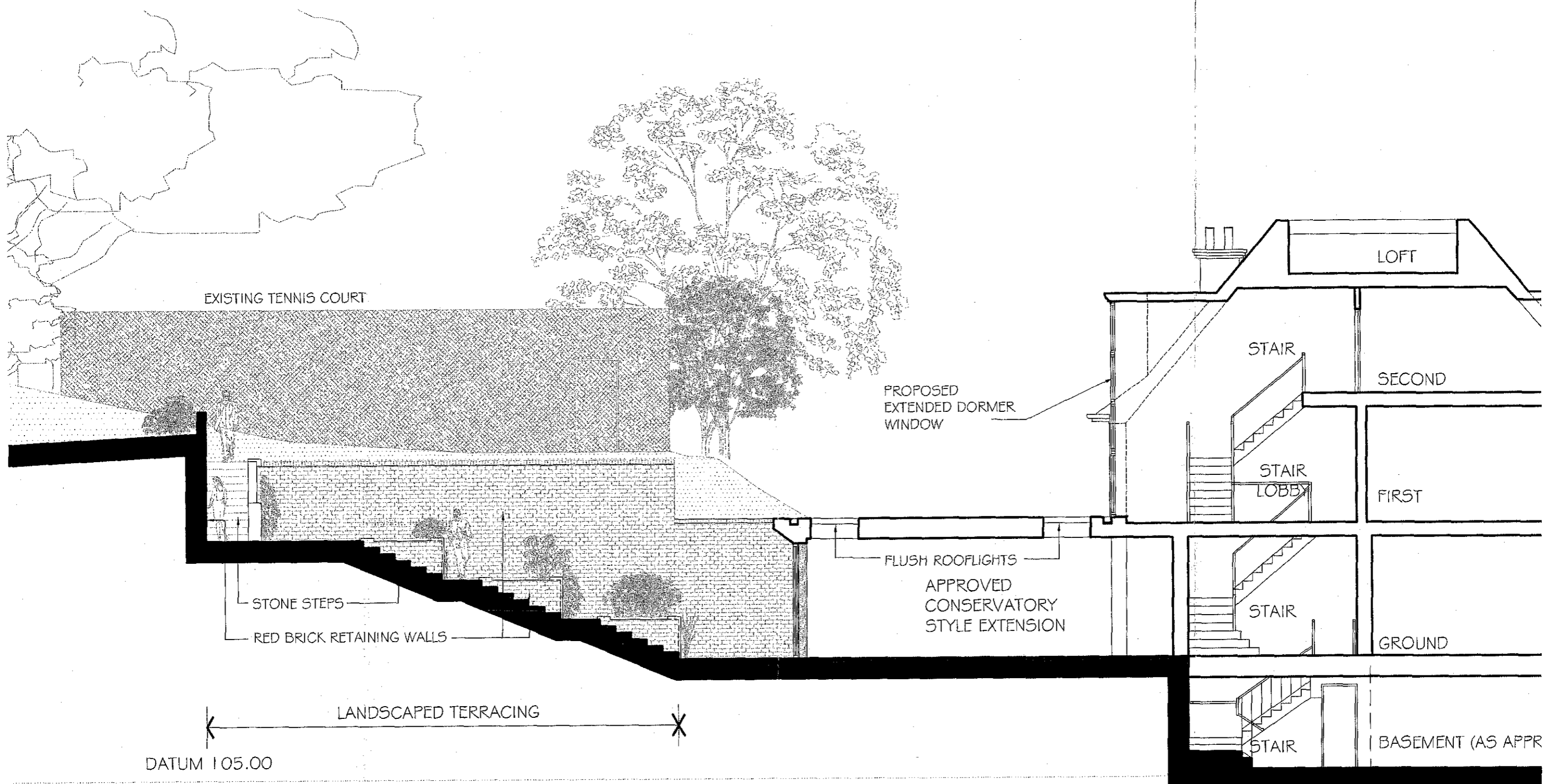
6788/P41



DATUM 105.00

ELEVATION A-A, VIEWED FROM OAK HILL WAY (FOOTPATH)

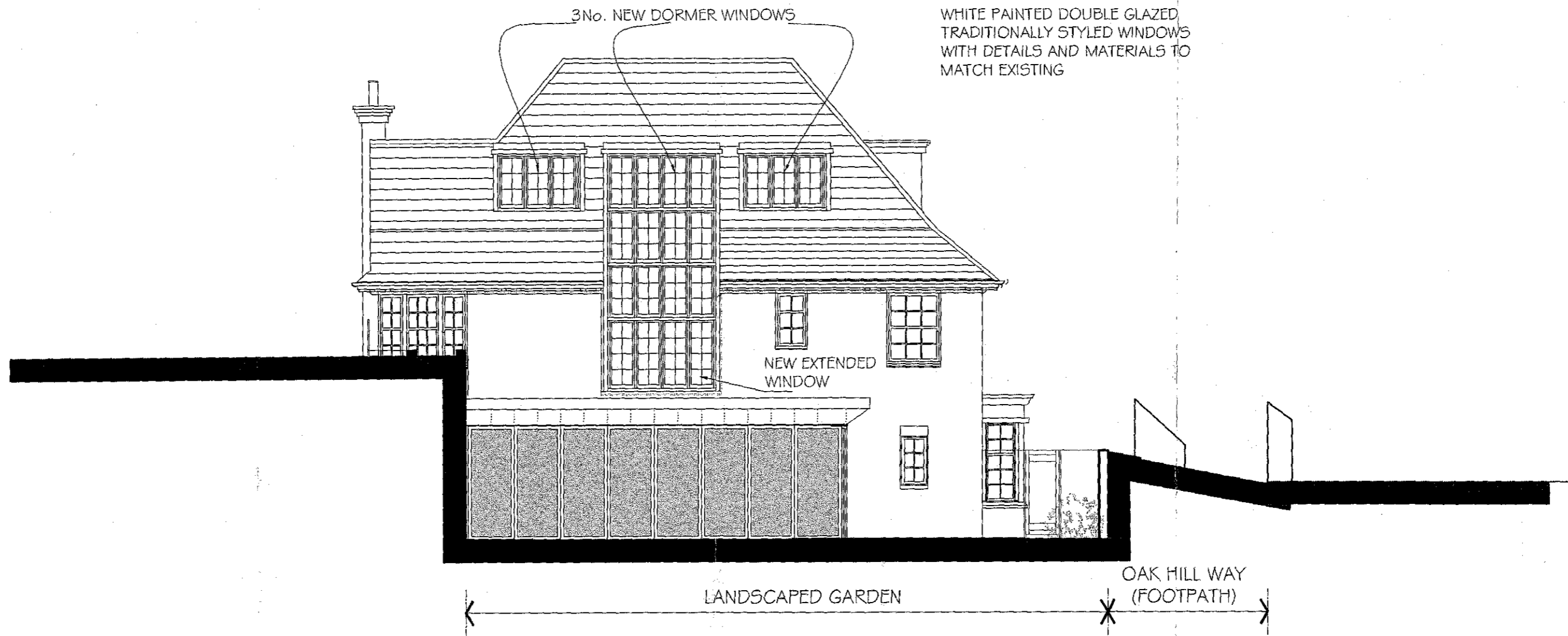
PROPOSED ELEVATION A-A (FOOTPATH)	
SCALE - 1:200	
22 REDINGTON ROAD	
LONDON NW3 7RG	
PLANNING	12/04
6788/P40	



SECTION C-C

PROPOSED SECTION C-C	
SCALE - 1:100	
22 REDINGTON ROAD	
LONDON NW3 7RG	
PLANNING	12/04

6788/P42



SECTION D-D
REAR ELEVATION

PROPOSED REAR ELEVATION (D-D)	
SCALE - 1:100	
22 REDINGTON ROAD	
LONDON NW3 7RG	
PLANNING	12/04

6788/P43