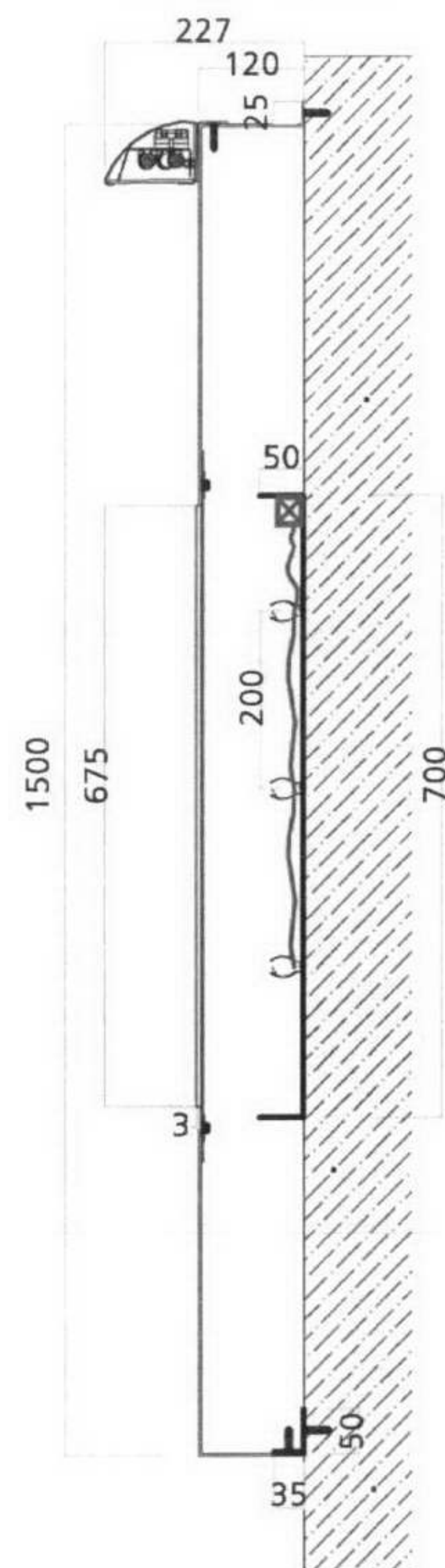


# EXTERNALLY ILLUMINATED FASCIA

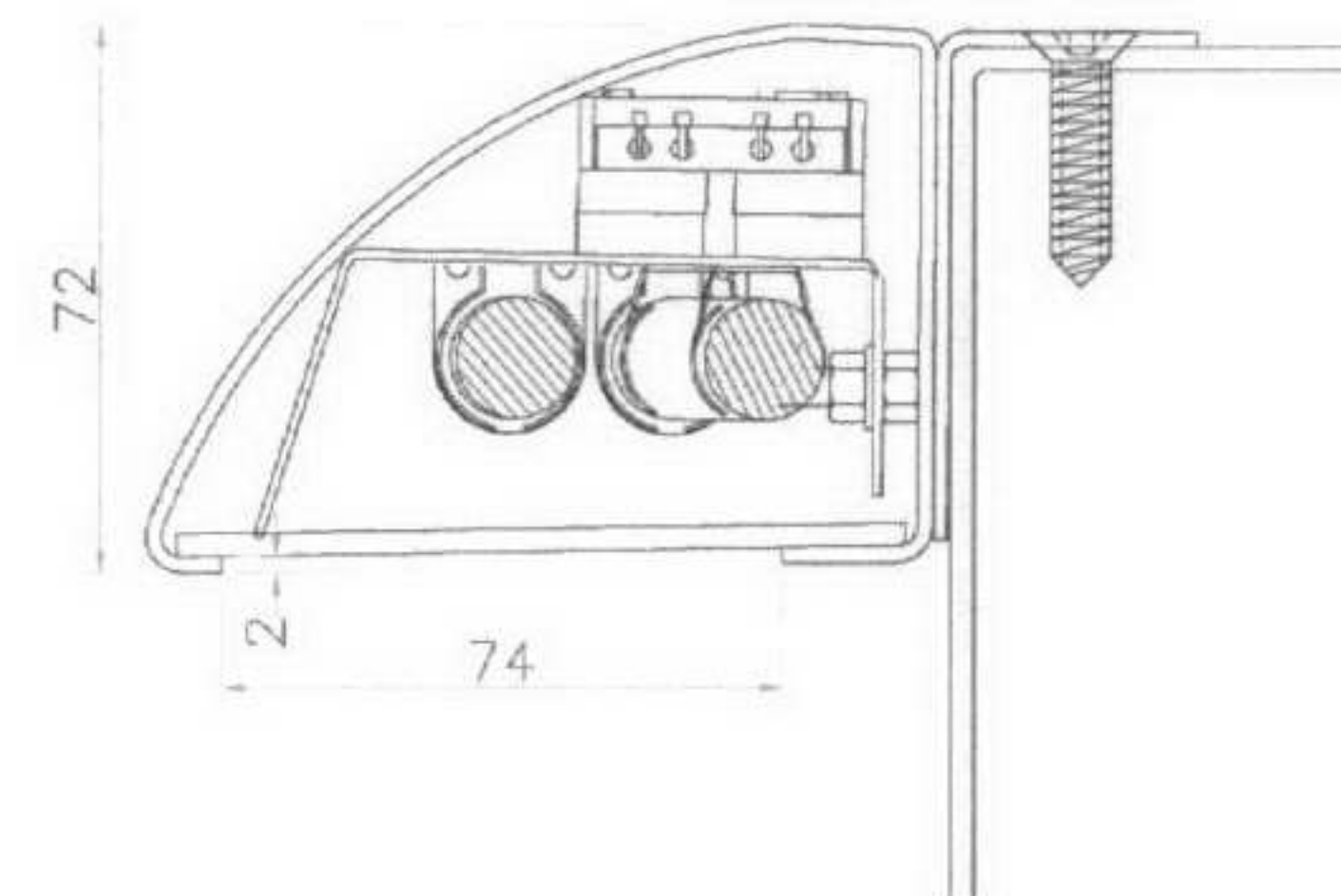
Section through detail

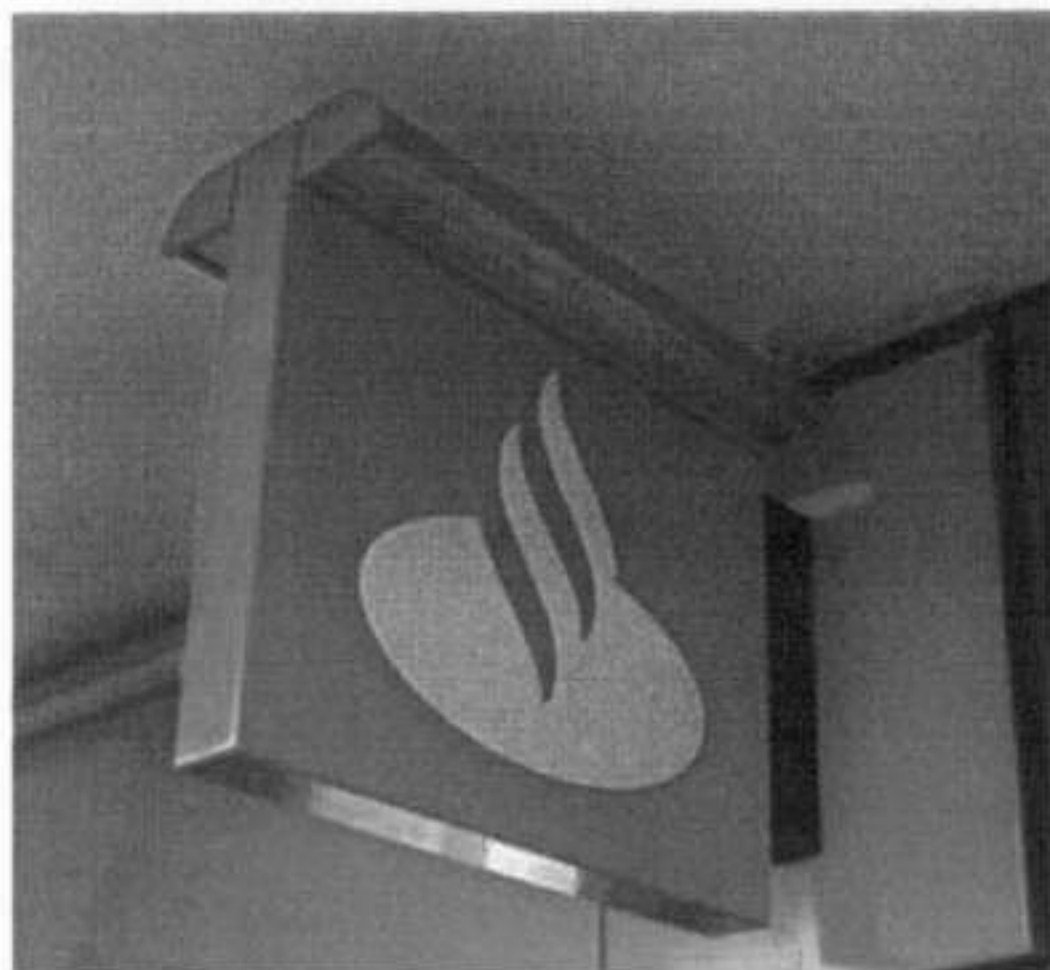


## SPECIFICATION:

Fabricated aluminium fascia finished in Abbey Red.  
Internally illuminated with fret cut & pushed through 6mm Opal 050 acrylic text & logo.  
Optional Integral full-width down lighter.

Intergrated down lighting unit

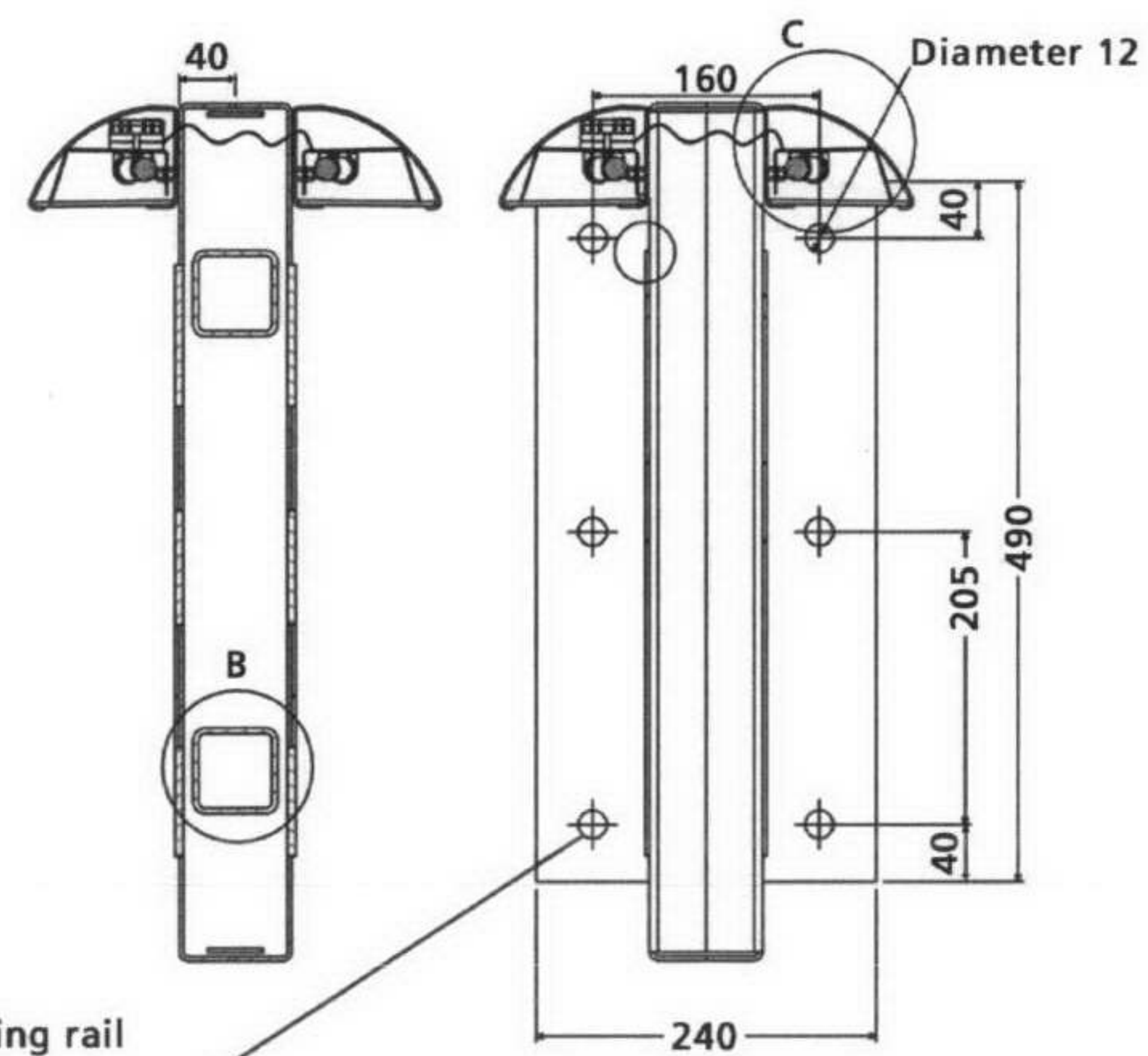
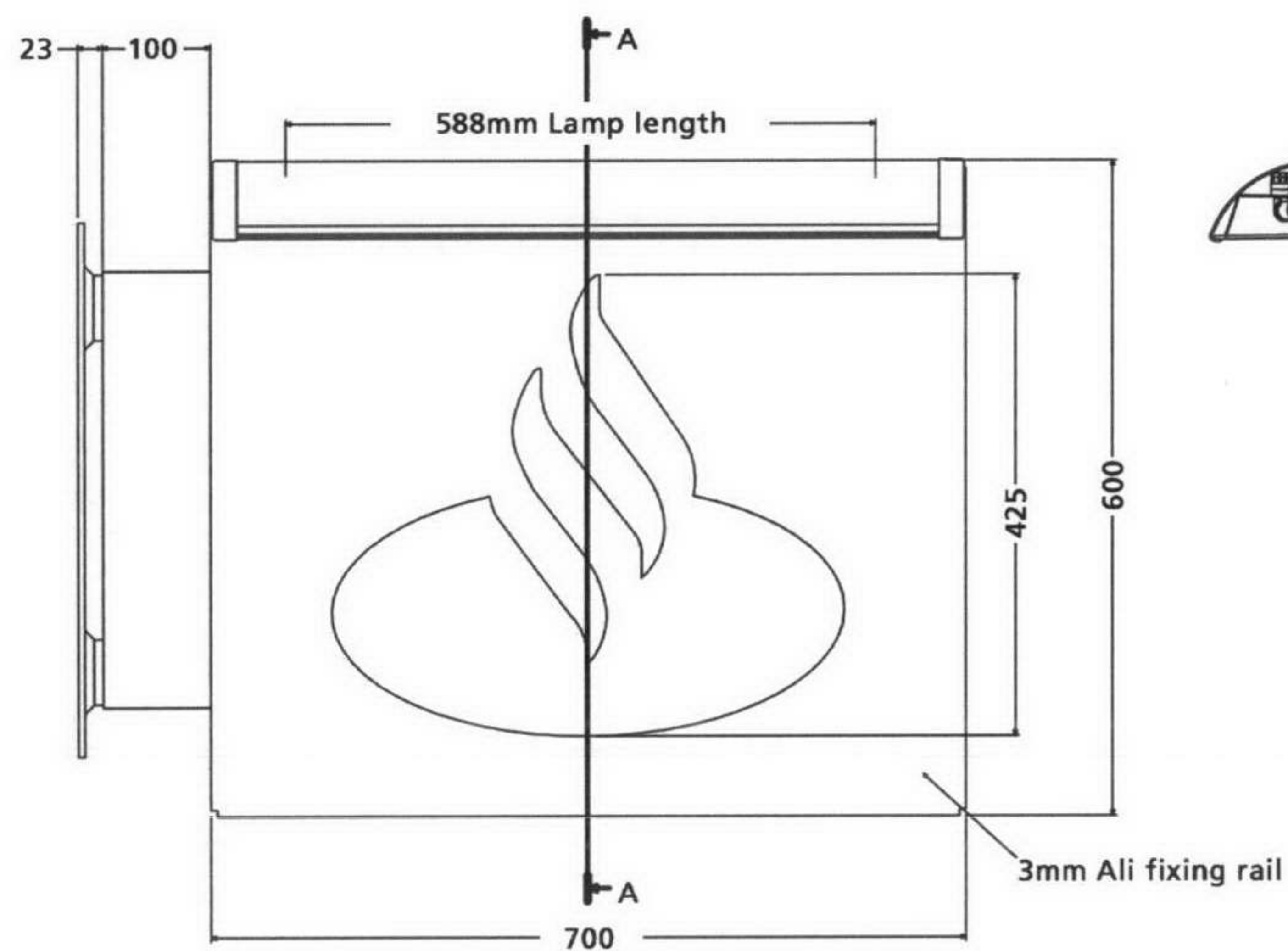




### PROJECTING SIGN

**SPECIFICATION:**

Mild steel internal frame  
finished in Abbey Red.  
Fret cut & pushed through 6mm  
Opal 050 acrylic logo.  
Integral full-width down lighter



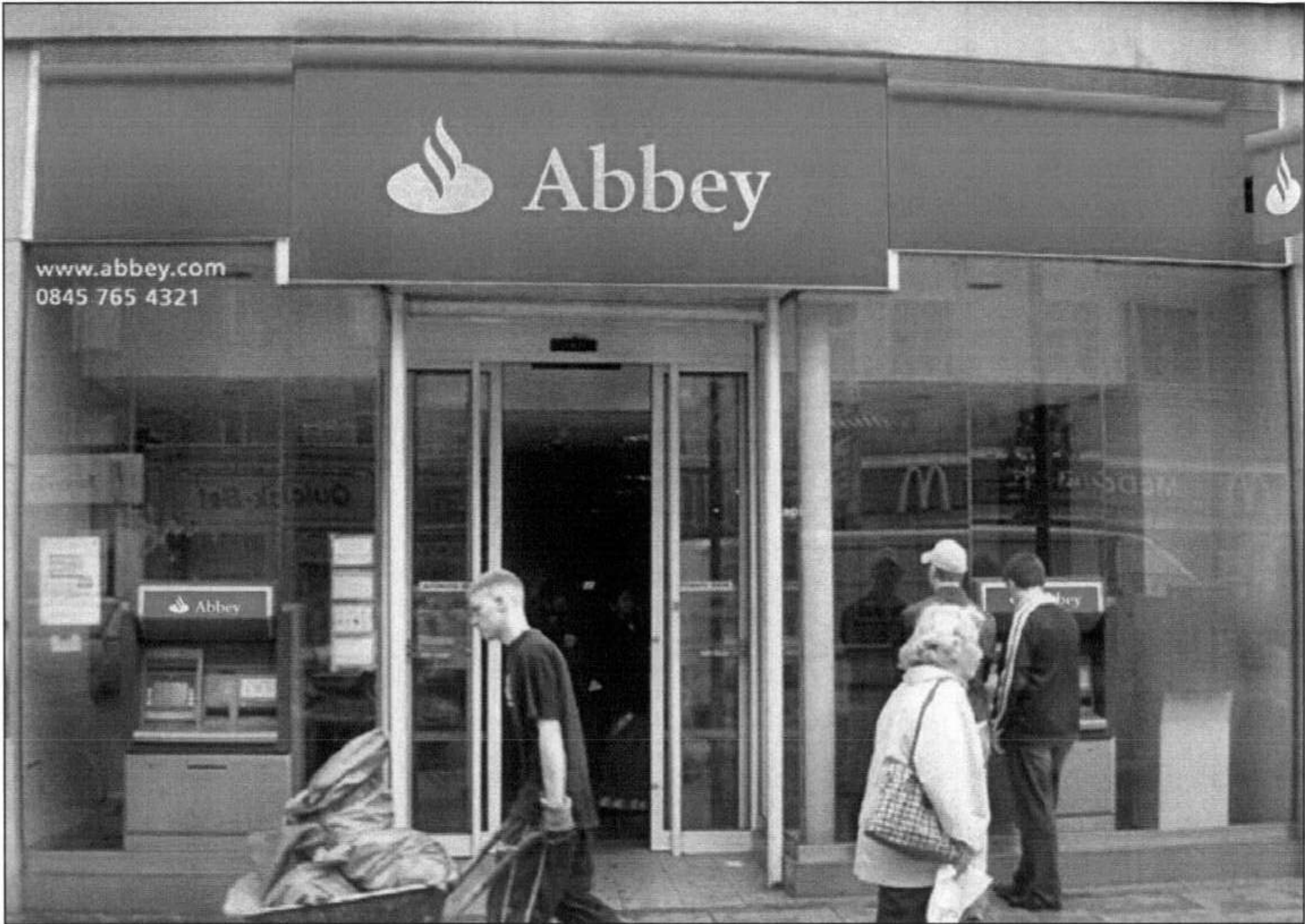
M10/10L RAWL BOLT FIXINGS 6 OFF  
NB:

A: WALL FIX M10/10L RAWL BOLTS  
B: TIMBER FIX M10 COACH BOLTS

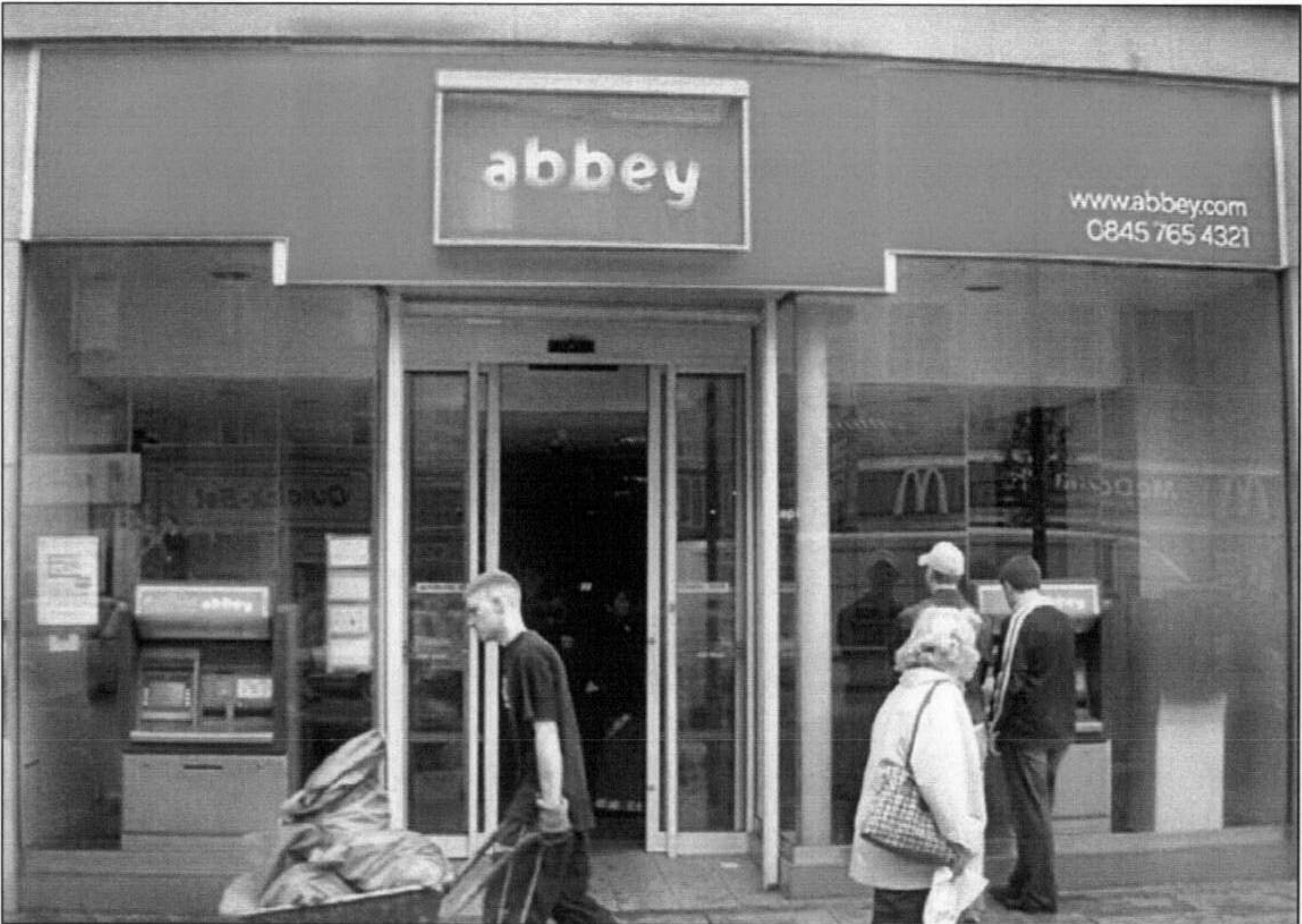


Camden town No 663, 121-123 Camden High Street

Proposed



Existing

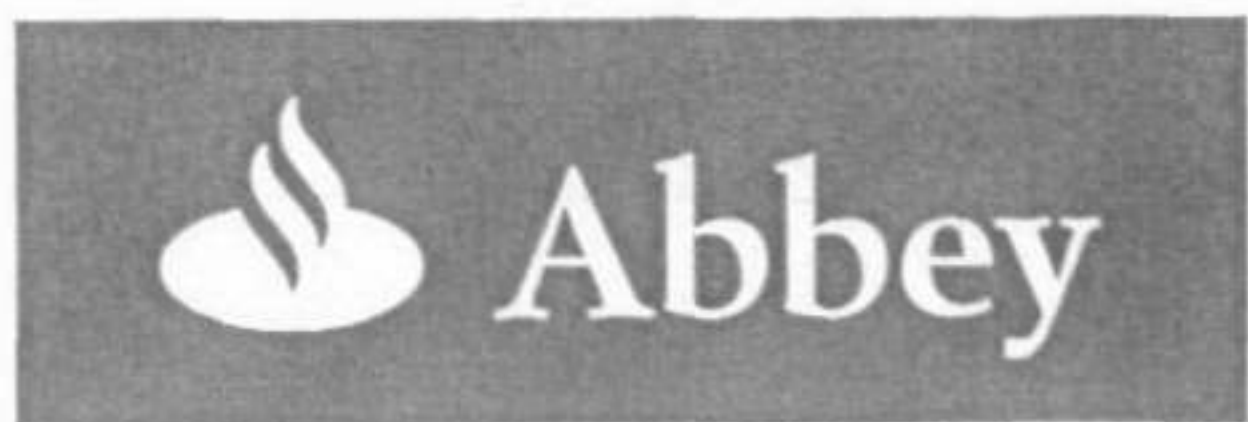


General Notes

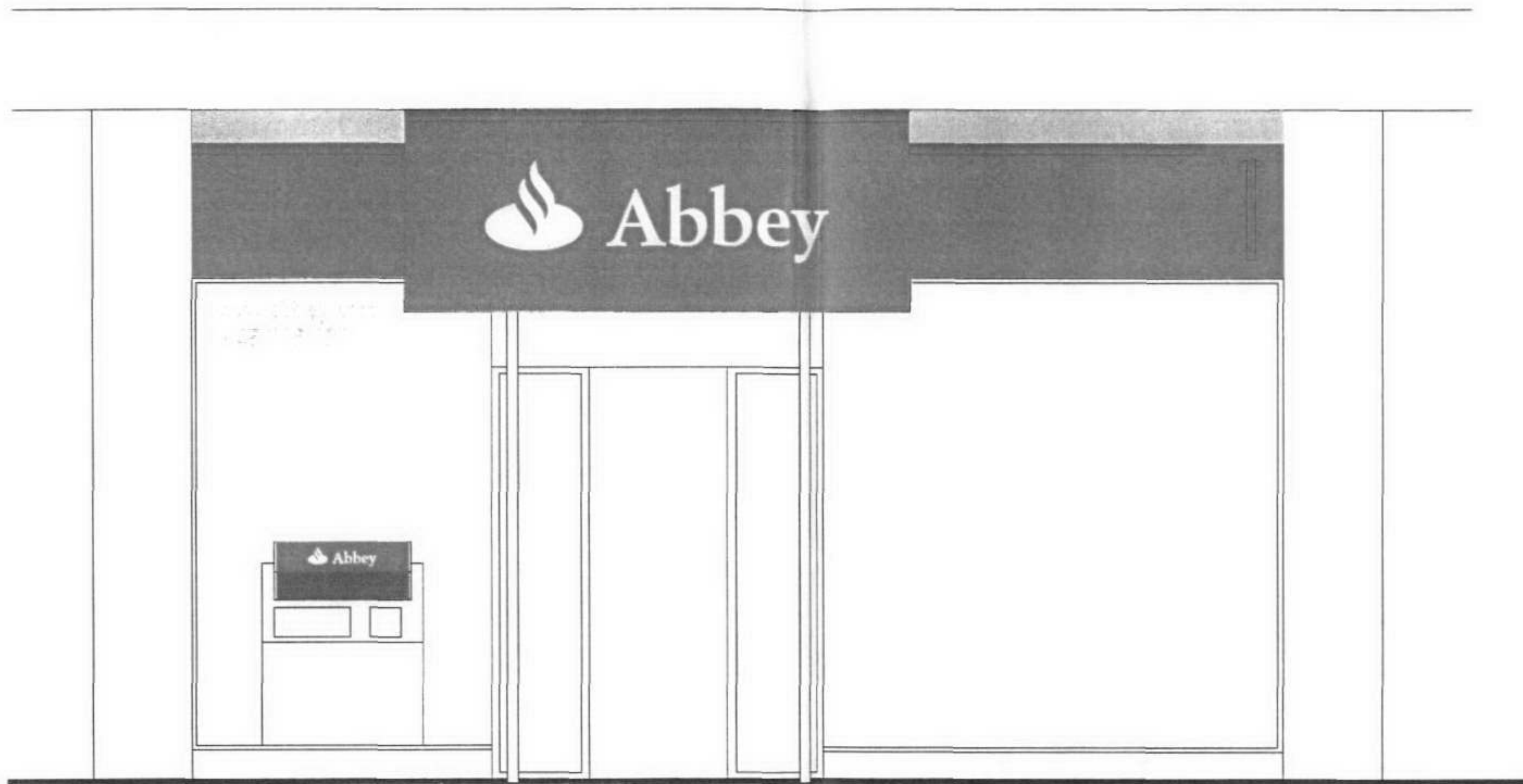
- Remove existing fascia sign and fascia panels
- Remove ATM header panels
- Locate new externally illuminated red fascia panel of appropriate standard size 800mm to each side of fascia module
- Locate new externally illuminated fascia module 3050mm x 1205mm with 225mm internally illuminated Abbey text and logo
- Locate new panel ATM headers
- Locate new 'www.abbey.com' and telephone number to left of glazing panel

Date	Revision	By	Details
31/03/2005	0	MCS	Initial issue



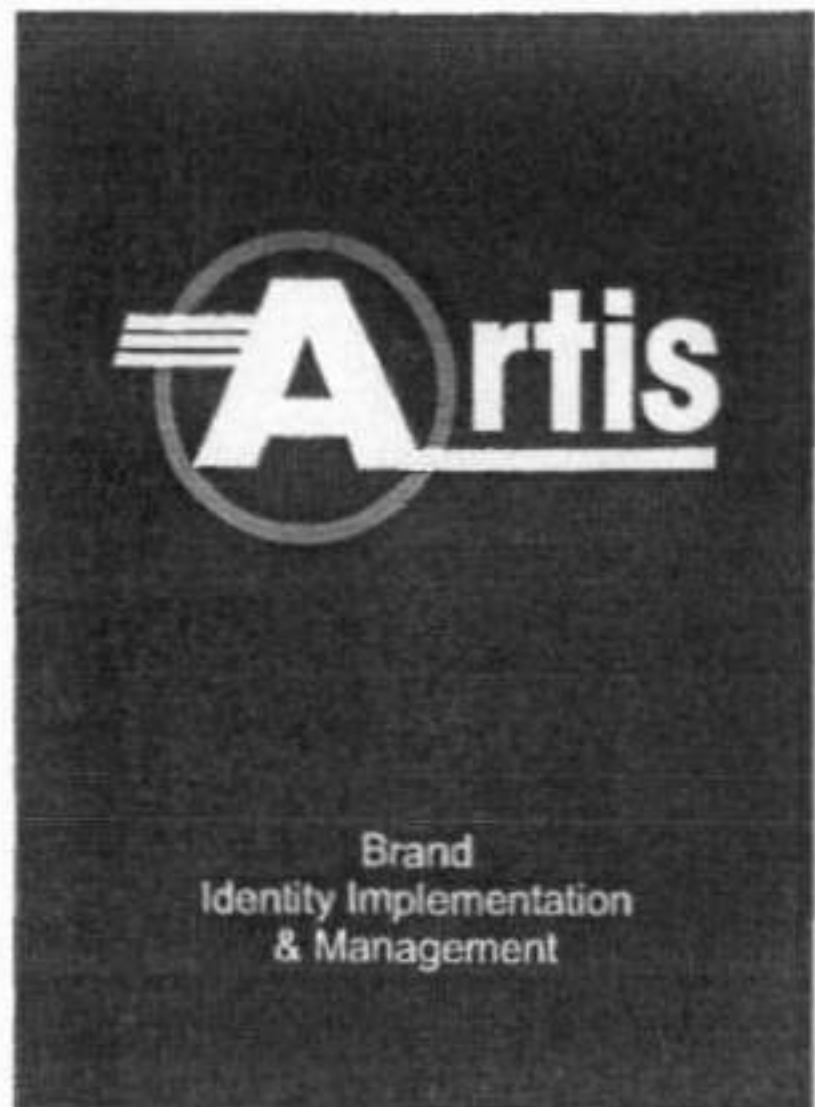


Camden town No 663, 121-123 Camden High Street



RECEIVED  
13 JUN 2005

Date	Revision	By	Details



Scale 1:50