
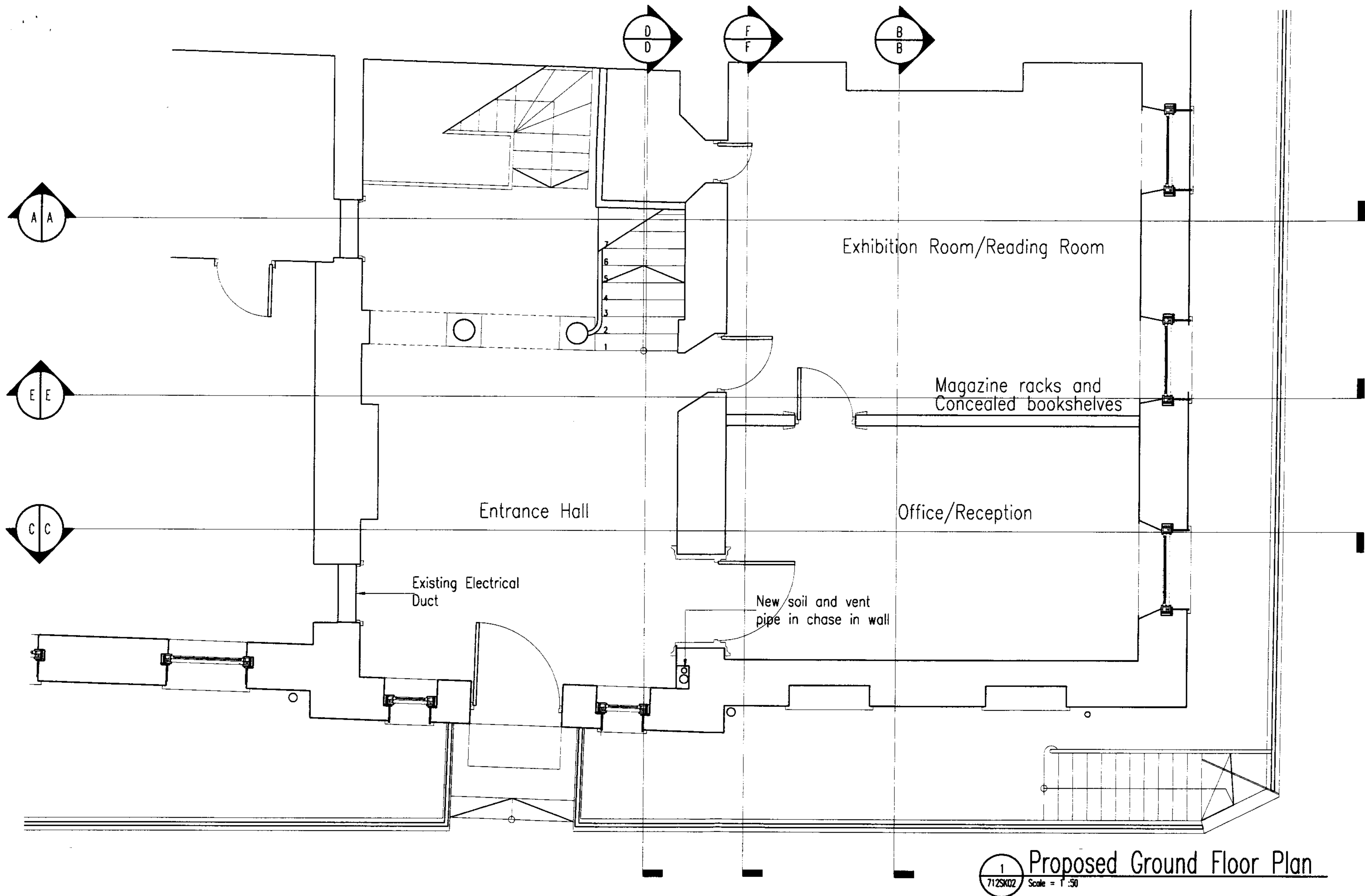
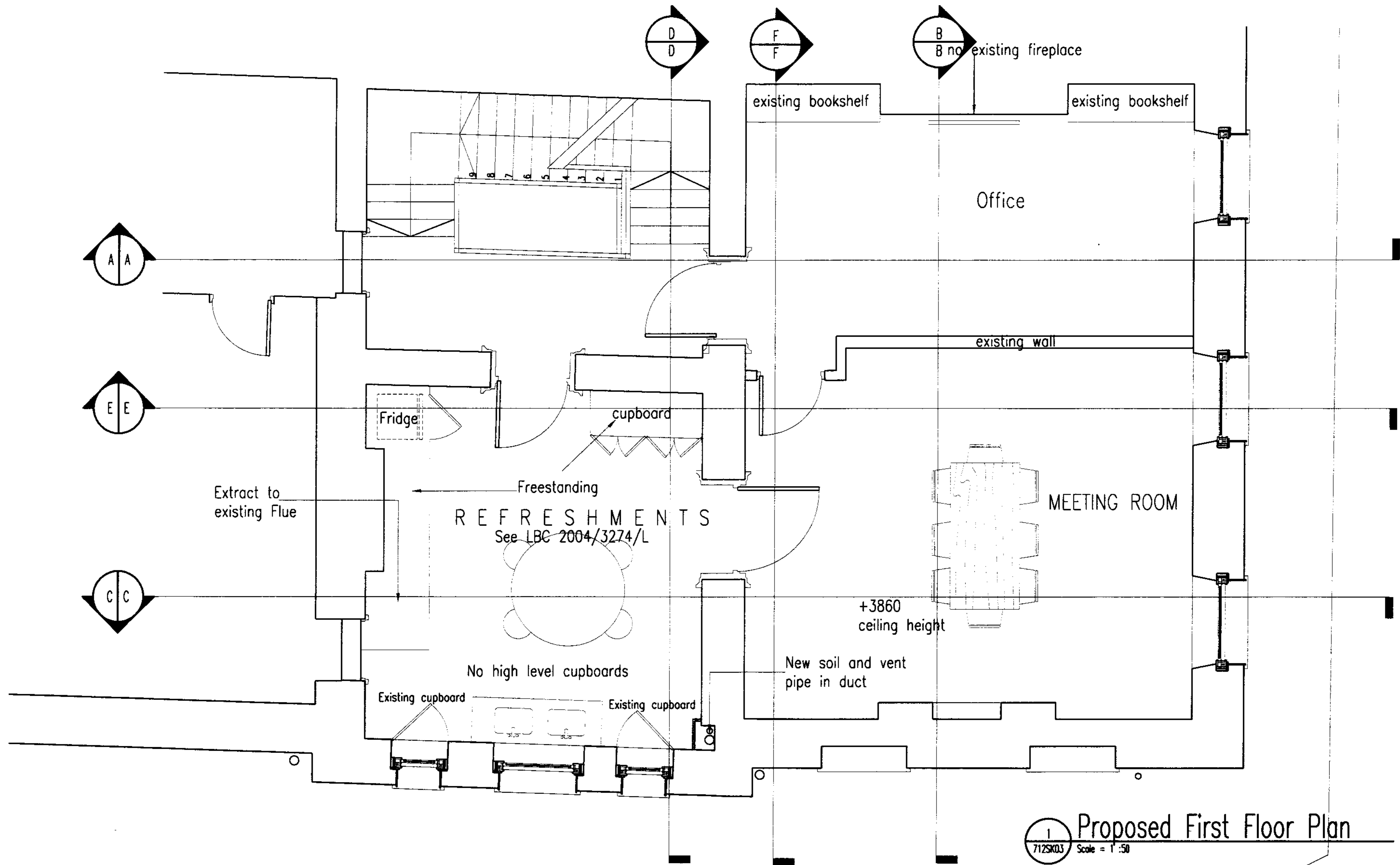


Suffix	Revisions	Date	GENERAL NOTES	Contract	Title	James Cubitt & Partners Sinclair House, The Avenue, West Ealing London W13 8NT T 0208 810 6700 F 0208 810 4446	
			All dimensions to be checked on site prior to the production of all working and/or fabrication drawings and all setting-out and all site works.  This drawing should be read in conjunction with other Architect's drawings.	<b>Pushkin House Trust</b> <b>Conversion of offices into Educational Trust</b> <b>5A Bloomsbury Square</b> <b>London WC1</b>	<b>Proposed Basement Plan</b>  Dwg. No. 712 SK 01 Scale 1:50	Date Aug. 2005 Drawn by AKI. AKIWUMI	

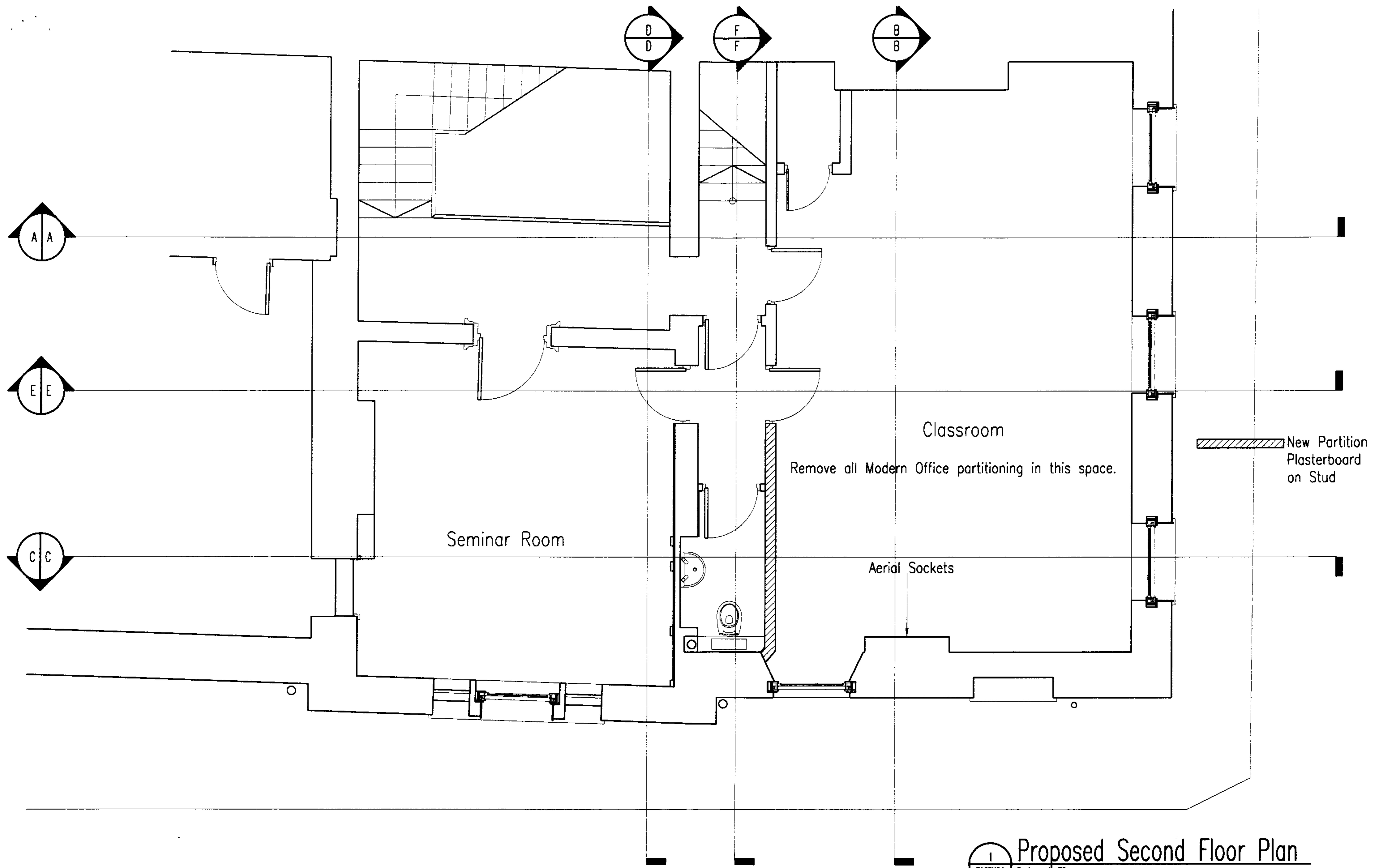


Suffix	Revisions	Date	GENERAL NOTES	Contract	Title	James Cubitt & Partners
B	Drawing update		All dimensions to be checked on site prior to the production of all working and/or fabrication drawings and all setting-out and all site works.  This drawing should be read in conjunction with other Architect's drawings.	<b>Pushkin House Trust</b> <b>Conversion of offices into Educational Trust</b> <b>5A Bloomsbury Square</b> <b>London WC1A 2LX</b>	<b>Proposed</b> <b>Ground Floor Plan</b>  Dwg. No. 712 SK 02 Scale 1:50      Revision B	Sinclair House, The Avenue, West Ealing London W13 8NT T 0208 810 6700 F 0208 810 4446  Date AUG. 2005 Drawn by AKI. AKIWUMI



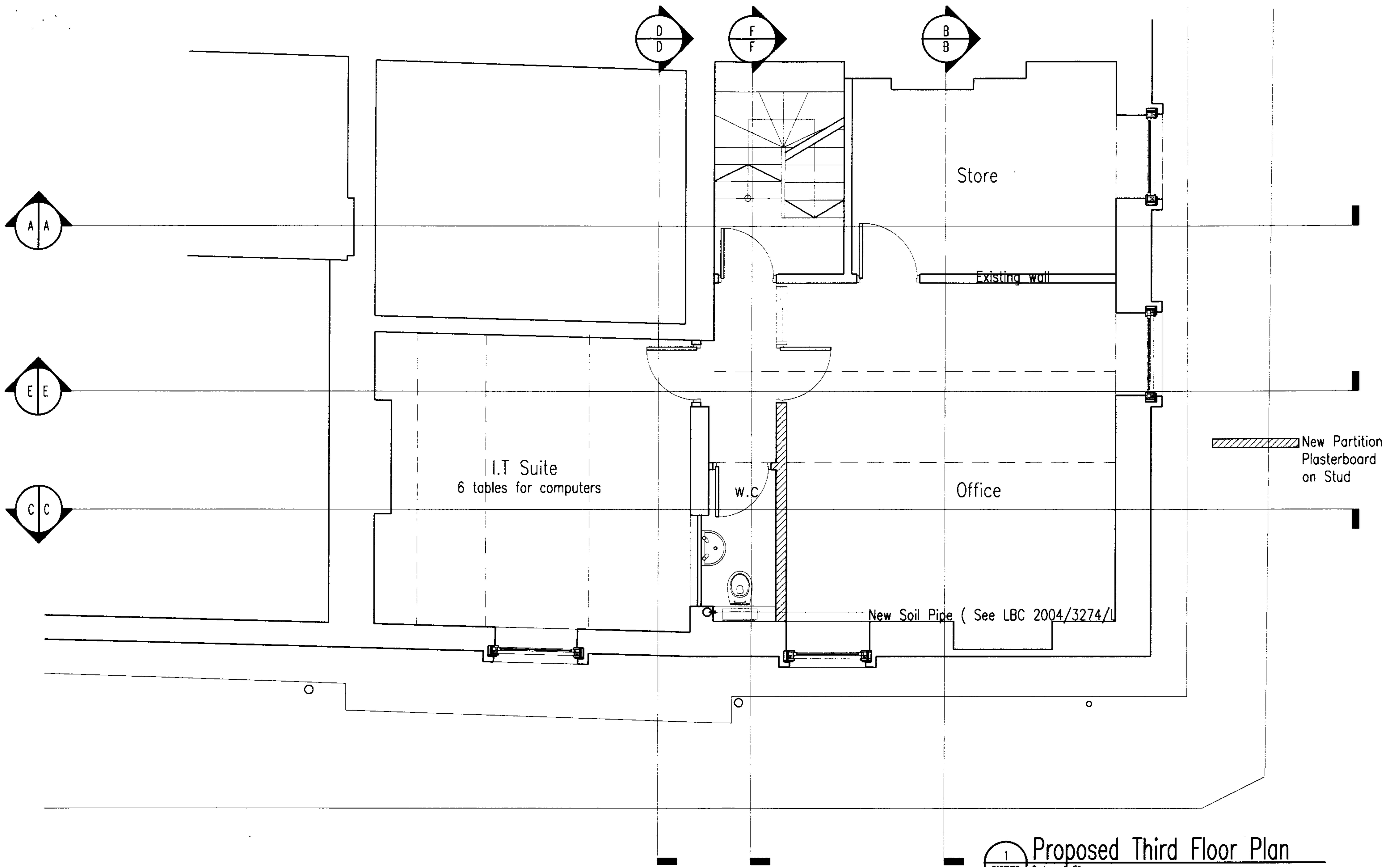
1 Proposed First Floor Plan  
712SK03 Scale = 1:50

Suffix	Revisions	Date	GENERAL NOTES	Contract	Title	James Cubitt & Partners
B	Drawing update	17.07.04	All dimensions to be checked on site prior to the production of all working and/or fabrication drawings and all setting-out and all site works.  This drawing should be read in conjunction with other Architect's drawings.	Pushkin House Trust Conversion of offices into Educational Trust 5A Bloomsbury Square London WC1A 2LX	Proposed First Floor Plan Dwg. No. 712 SK 03 Scale 1:50	Sinclair House, The Avenue, West Ealing London W13 8NT T 0208 810 6700 F 0208 810 4446 Date AUG. 2005 Drawn by AKI. AKIWUMI



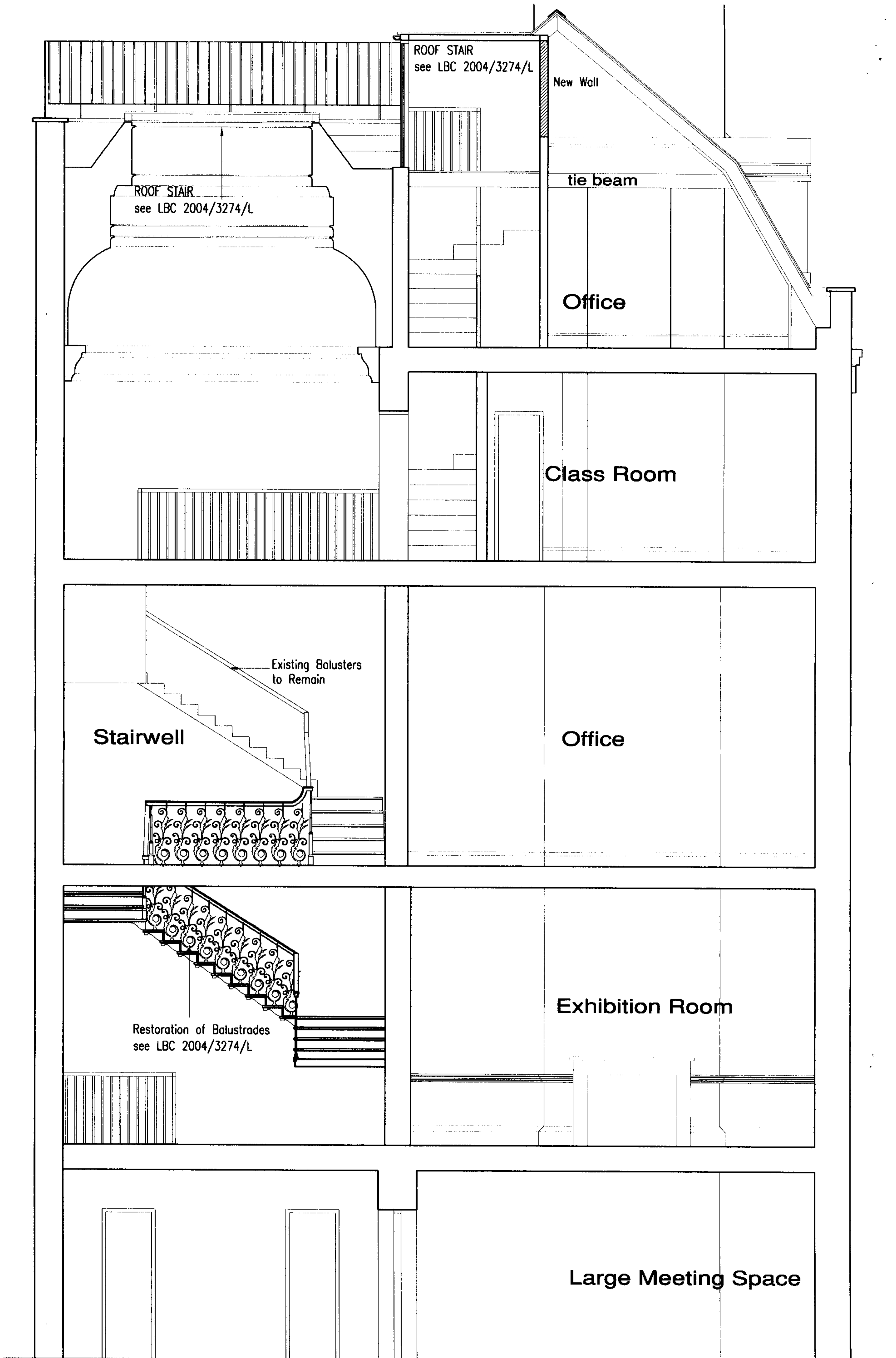
1 Proposed Second Floor Plan  
712SK04 Scale = 1:50

Suffix	Revisions	Date	GENERAL NOTES	Contract	Title	James Cubitt & Partners
B	Drawing update	16.02.04	All dimensions to be checked on site prior to the production of all working and/or fabrication drawings and all setting-out and all site works.  This drawing should be read in conjunction with other Architect's drawings.	Pushkin House Trust Conversion of offices into Educational Trust 5A Bloomsbury Square London WC1A 2LX	Proposed Second Floor Plan Dwg. No. 712 SK 04 Scale 1:50	Sinclair House, The Avenue, West Ealing London W13 8NT T 0208 810 6700 F 0208 810 4446
C	Proposed door detail D3 Update	20.09.04				



1 Proposed Third Floor Plan  
712SK05 Scale = 1:50

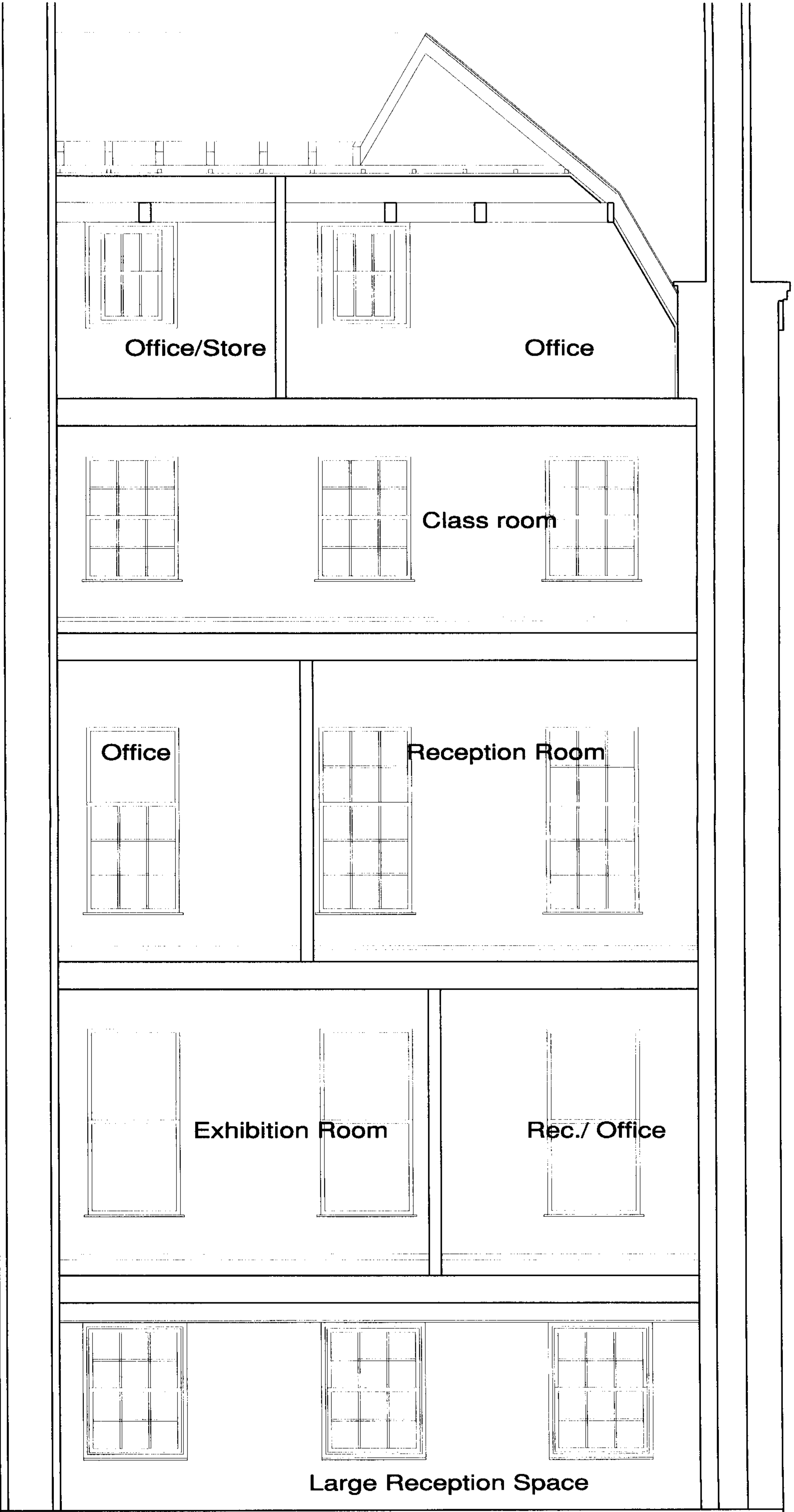
Suffix	Revisions	Date	GENERAL NOTES	Contract	Title	James Cubitt & Partners
B	Drawing update	17.07.04	All dimensions to be checked on site prior to the production of all working and/or fabrication drawings and all setting-out and all site works.  This drawing should be read in conjunction with other Architect's drawings.	Pushkin House Trust Conversion of offices into Educational Trust 5A Bloomsbury Square London WC1	Proposed Third Floor Plan Dwg. No. 712 SK 05 Scale 1:50	Sinclair House, The Avenue, Wear Ealing London W13 8NT T 0208 810 6700 F 0208 810 4446 Date AUG. 2005 Drawn by AKI: AKIWUMI



# Section A-A

Suffix		Revisions		Date		GENERAL NOTES		Contract		Title		James Cubitt & Partners	
						All dimensions to be checked on site prior to the production of all working and/or fabrication drawings and all setting-out and all site works. This drawing should be read in conjunction with other Architect's drawings.		Pushkin House Trust Conversion of offices into Educational Trust 5A Bloomsbury Square London WC1A 2LX		Proposed Section A-A Dwg. No. 712 SK 09 Scale 1:50		Sincclair House, The Avenue, West Ealing London W13 8NT T 0208 810 6700 F 0208 810 4446	
										Revision		Date AUG 2005 Drawn by AKI, AKIWUMI	



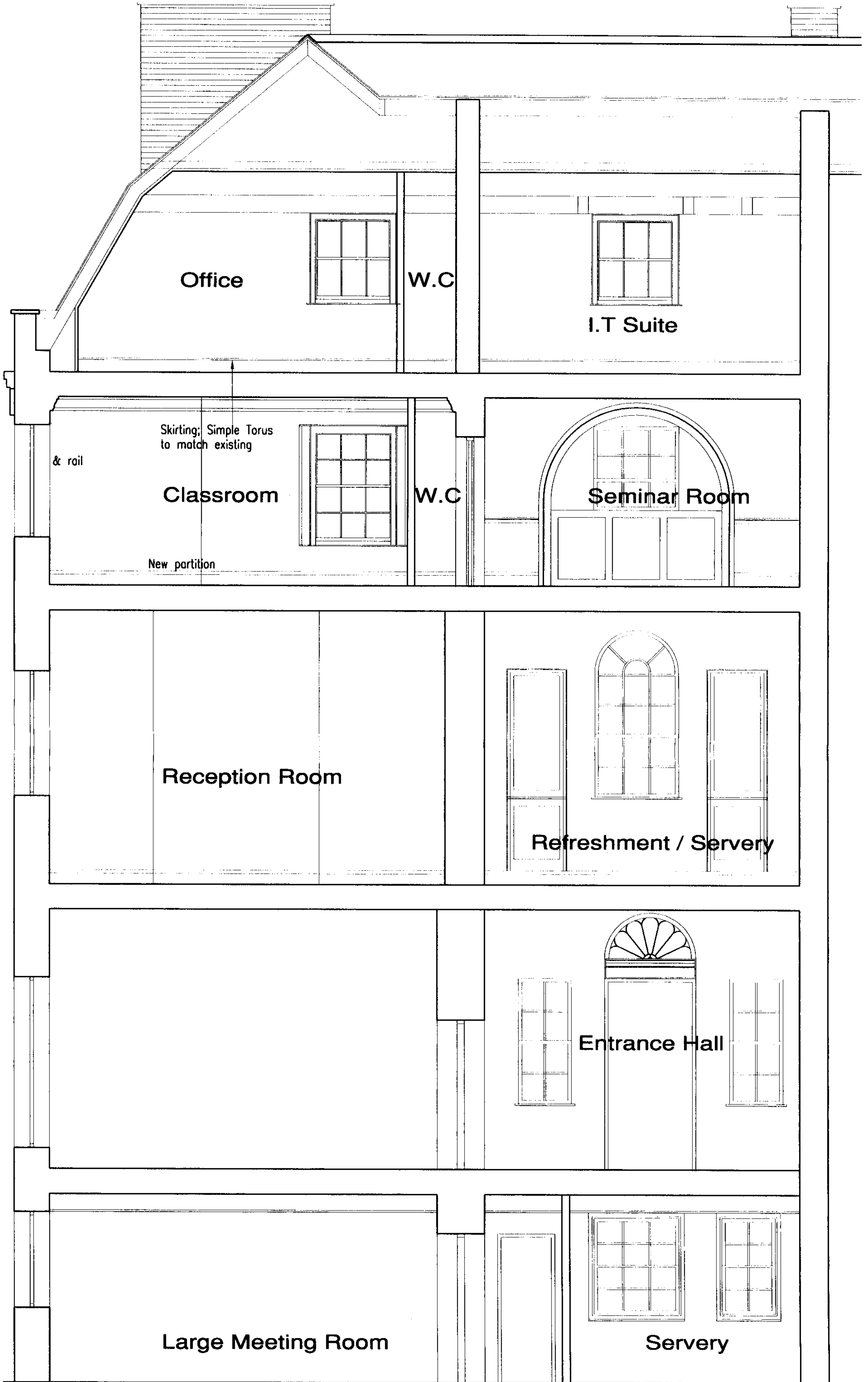


Large Reception Space

# Section B-B

Revisions		Date	GENERAL NOTES		Contract		Title		James Cubitt & Partners	
Suffix			All dimensions to be checked on site prior to the production of all working and/or fabrication drawings and all setting-out and all site works. This drawing should be read in conjunction with other Architect's drawings.		Pushkin House Trust		Proposed Section BB		Sinclair House, The Avenue, West Ealing London W13 9NT	
					Conversion of offices into Educational Trust		Dwg. No. 712 SK 010		London W13 9NT	
					5A Bloomsbury Square London WC1A 2LX		Scale 1:50		T 0208 810 8700	
							Revision		F 0208 810 4448	
									Date AUG. 2005	
									Drawn by AKI. AKIWUMI	

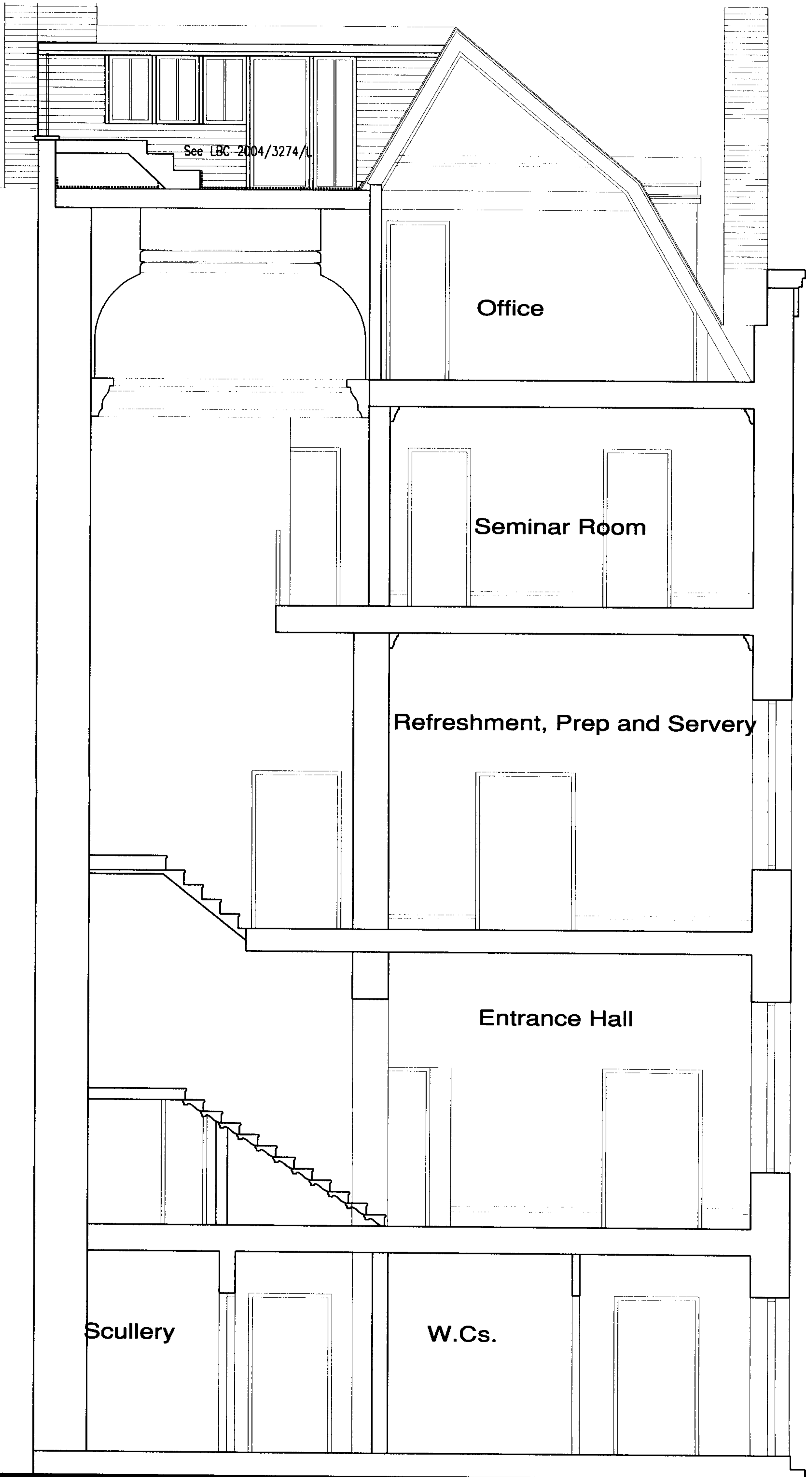




Suffix		Revisions		Date		GENERAL NOTES	
						<p>All dimensions to be checked on site prior to the production of all working and/or fabrication drawings and all setting-out and all site works.</p> <p>This drawing should be read in conjunction with other Architect's drawings.</p>	
Contract		Title		Date		Drawn by	
Pushkin House Trust Conversion of offices into Educational trust 5A Bloomsbury Square London WC1A 2LX		Proposed Section C-C Dwg. No. 712 SK 011 Scale 1:50		AUG. 2005 AKI. AKIWUMI		James Cubitt & Partners Sinclair House, The Avenue, West Ealing London W13 9NT T 0208 810 6700 F 0208 810 4446	

Section C-C





See LBC 2004/3274/L

Office

Seminar Room

Refreshment, Prep and Servery

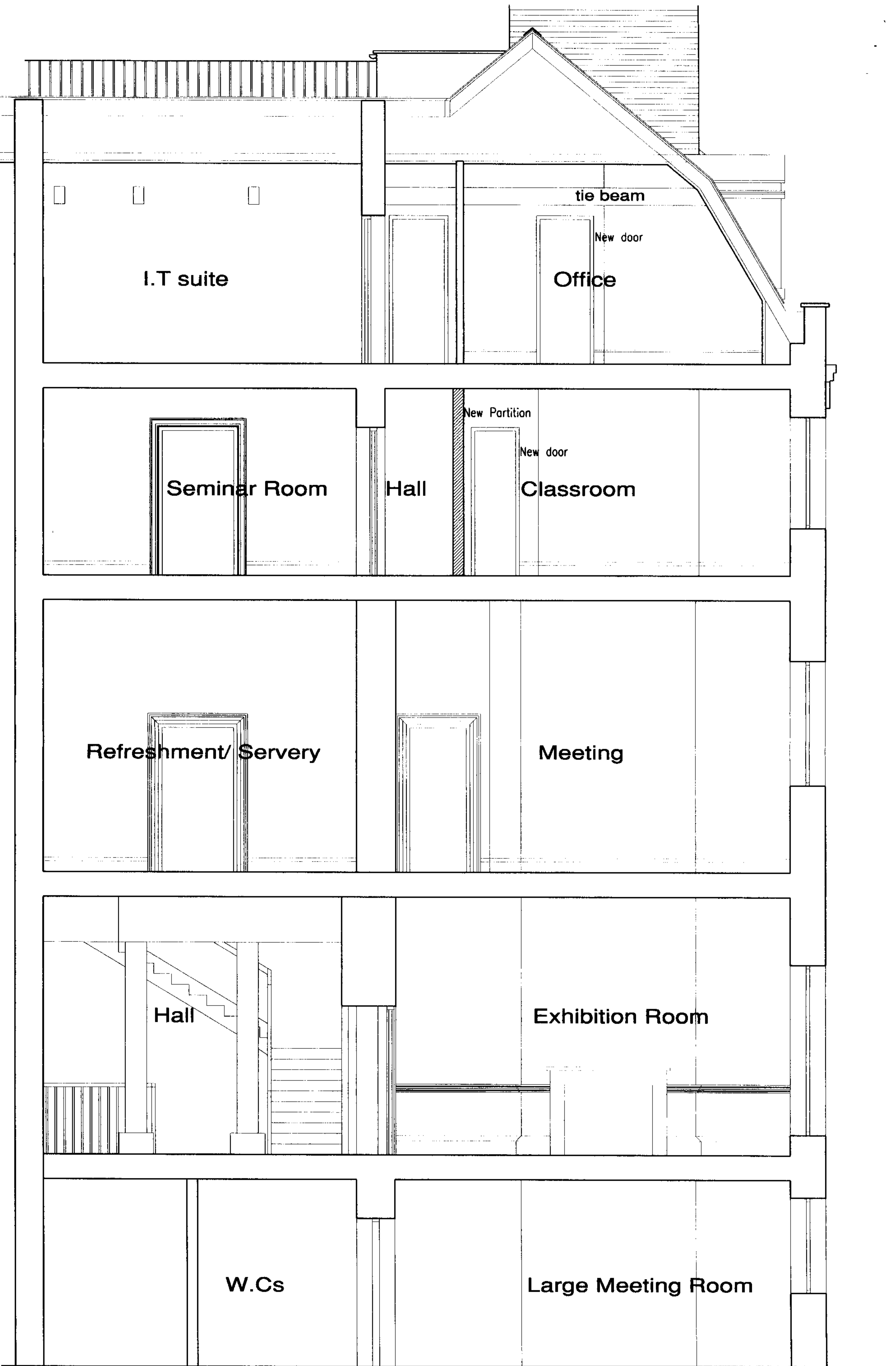
Entrance Hall

Scullery

W.Cs.

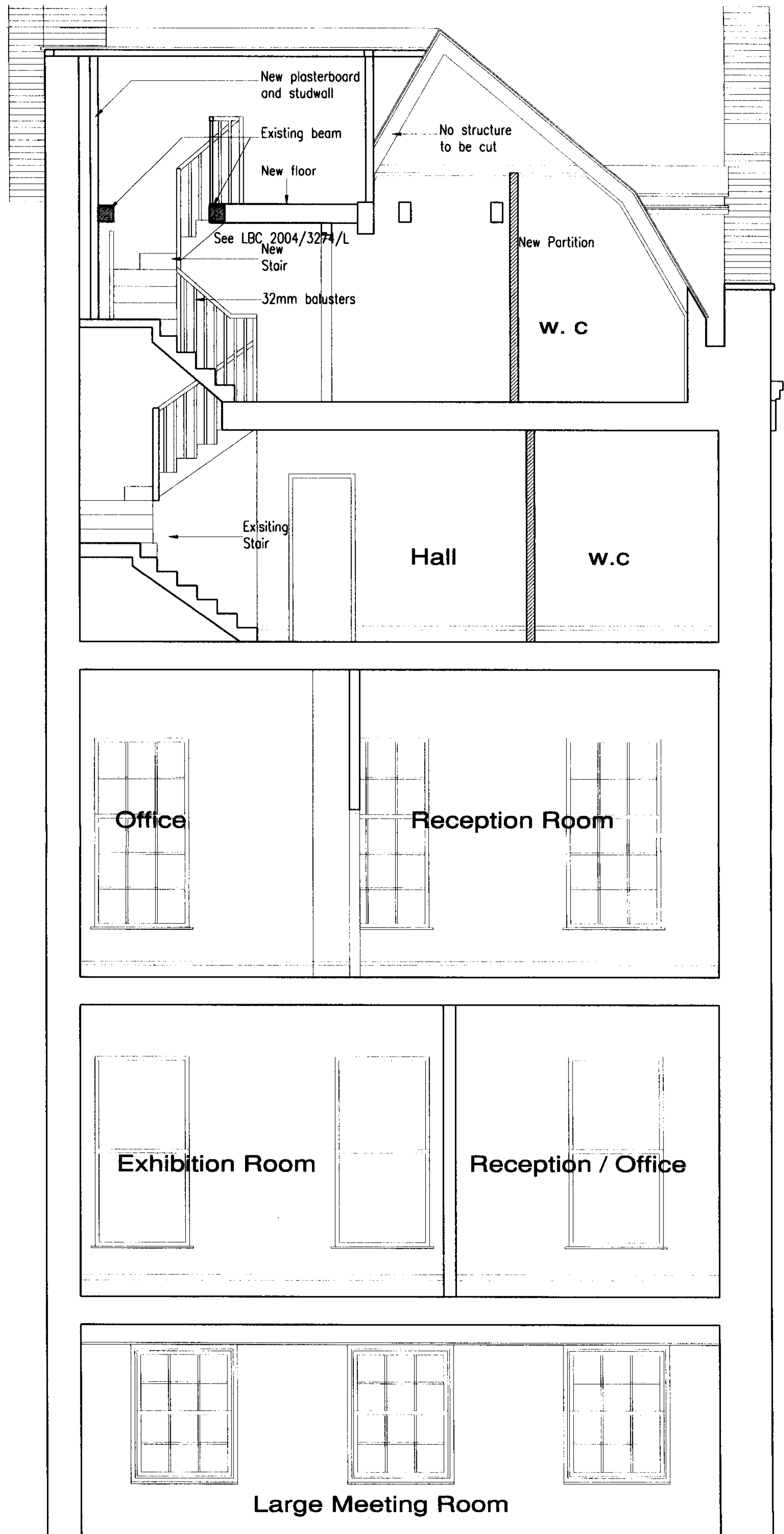
Revisions		Date		GENERAL NOTES		Contract		Title		James Cubitt & Partners	
Suffix		Date		All dimensions to be checked on site prior to the production of all working and/or fabrication drawings and all setting-out and all site works. This drawing should be read in conjunction with other Architect's drawings.		Pushkin House Trust Conversion of offices into Educational Trust 5A Bloomsbury Square London WC1A 2LX		Proposed Section D-D DWG. No. 712 SK 012 Scale 1:50		Sinclair House, The Avenue, West Ealing London W13 8NT T 0208 810 6700 F 0208 810 4446	
										Date AUG. 2005 Drawn by AKI. AKIWUMI	

Section D-D



	Revisions								
Date	GENERAL NOTES	<p>All dimensions to be checked on site prior to the production of all working and/or fabrication drawings and all setting-out and all site works.</p> <p>This drawing should be read in conjunction with other Architect's drawings.</p>							
Date	GENERAL NOTES								
<p>Contract</p> <p>Pushkin House Trust</p> <p>Conversion of offices into Educational Trust</p> <p>5A Bloomsbury Square</p> <p>London WC1A 2LX</p>		<p>Title</p> <p>Proposed Section E-E</p> <p>Dwg. No. 712 SK 013</p> <p>Scale 1:50</p> <p>Revision _____</p>							
<p>James Cubitt &amp; Partners</p> <p>Sinclair House, The Avenue,</p> <p>West Ealing</p> <p>London W13 8NT</p> <p>T 0171-935 0288</p> <p>F 0171-487 3448</p>		<p>Date AUG. 2005</p> <p>Drawn by AKI. AKIWUMI</p>							

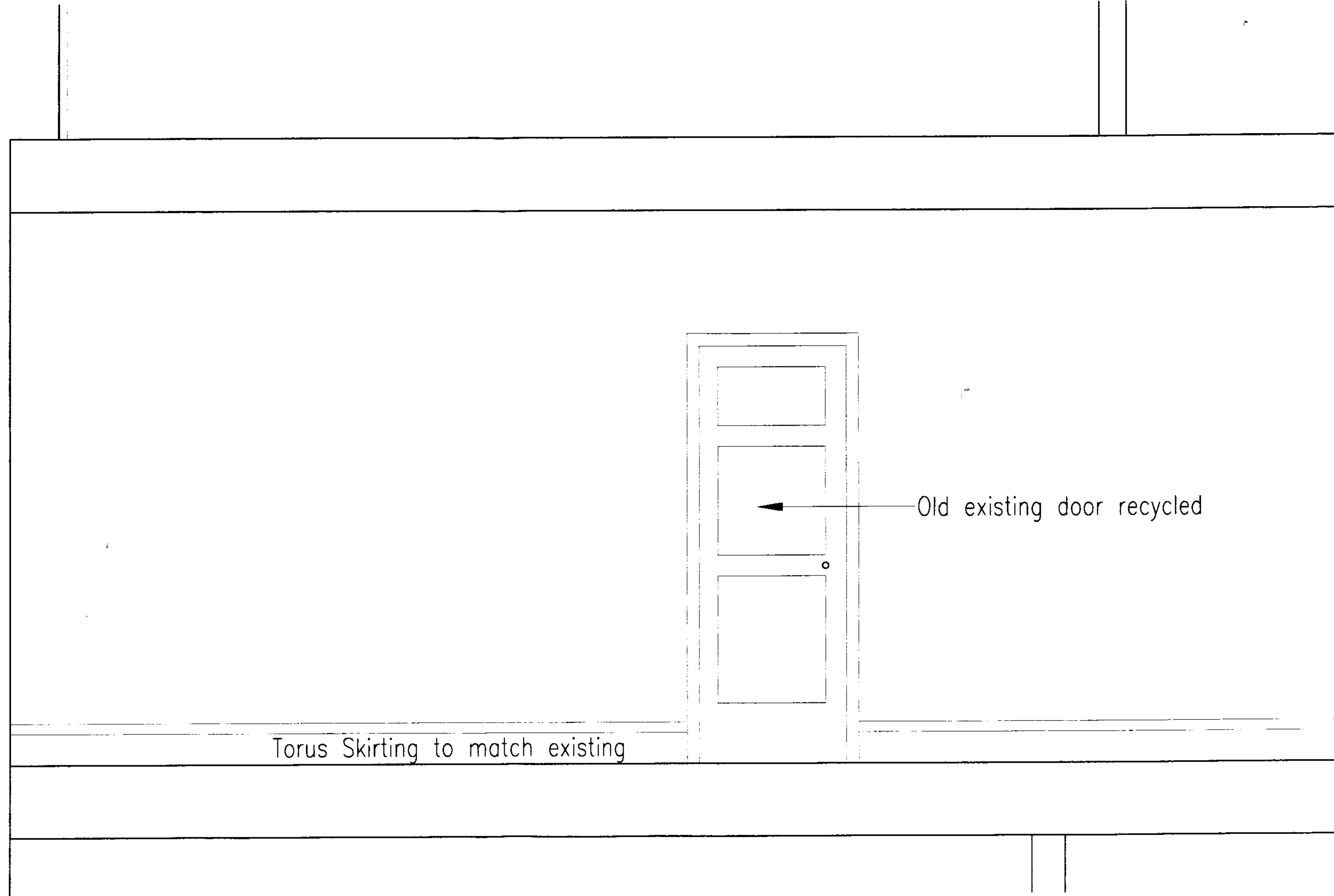
**Section E-E**



Section F-F

	Suffix	Revisions
	Date	
<p><b>GENERAL NOTES</b></p> <p>All dimensions to be checked on site prior to the production of all working and/or fabrication drawings and all setting-out and all site works.</p> <p>This drawing should be read in conjunction with other Architects drawings.</p>		
<p><b>Contract</b></p> <p>Pushkin House Trust          Conversion of offices into          Educational Trust          5A Bloomsbury Square          London WC1A 2LX</p>		
<p><b>Title</b></p> <p>Proposed          Section F-F          Dwg. No. 712 SK 014          Scale 1:50</p>		
<p><b>Revision</b></p> <p>_____</p>		
<p><b>James Cubitt &amp; Partners</b>          Sinclair House, The Avenue,          West Ealing          London W13 8NT          T 0208 810 6700          F 0208 810 4446</p>		
<p>Date AUG. 2005          Drawn by AKI. AKIWUMI</p>		





Torus Skirting to match existing

Old existing door recycled

Suffix	Revisions	Date	GENERAL NOTES	Contract	Title	James Cubitt & Partners Sinclair House, The Avenue, West Ealing London W19 6NT T 0208 810 6700 F 0208 810 4446	
			<p>All dimensions to be checked on site prior to the production of all working and/or fabrication drawings and all setting-out and all site works.</p> <p>This drawing should be read in conjunction with other Architect's drawings.</p>	<p>Pushkin House Trust Conversion of offices into Educational Trust 5A Bloomsbury Square London WC1A 2LX</p>	<p>Proposed Section through Second Floor</p>	<p>Dwg. No. 712 SK 015</p>	<p>Date Sept 2004 Drawn by AKI, AKIWUM!</p>
					<p>Scale 1/20</p>	<p>Revision _____</p>	