

AGATE SHORT ARCHITECTS 49-53 Caversham Road, London NWS

8 WATSON STREET LONDON E2 6HL

T 020 7739 9131 F 020 7739 1487

E INFO@AGATESHORT.CO.UK | WWW.AGATESHORT.CO.UK

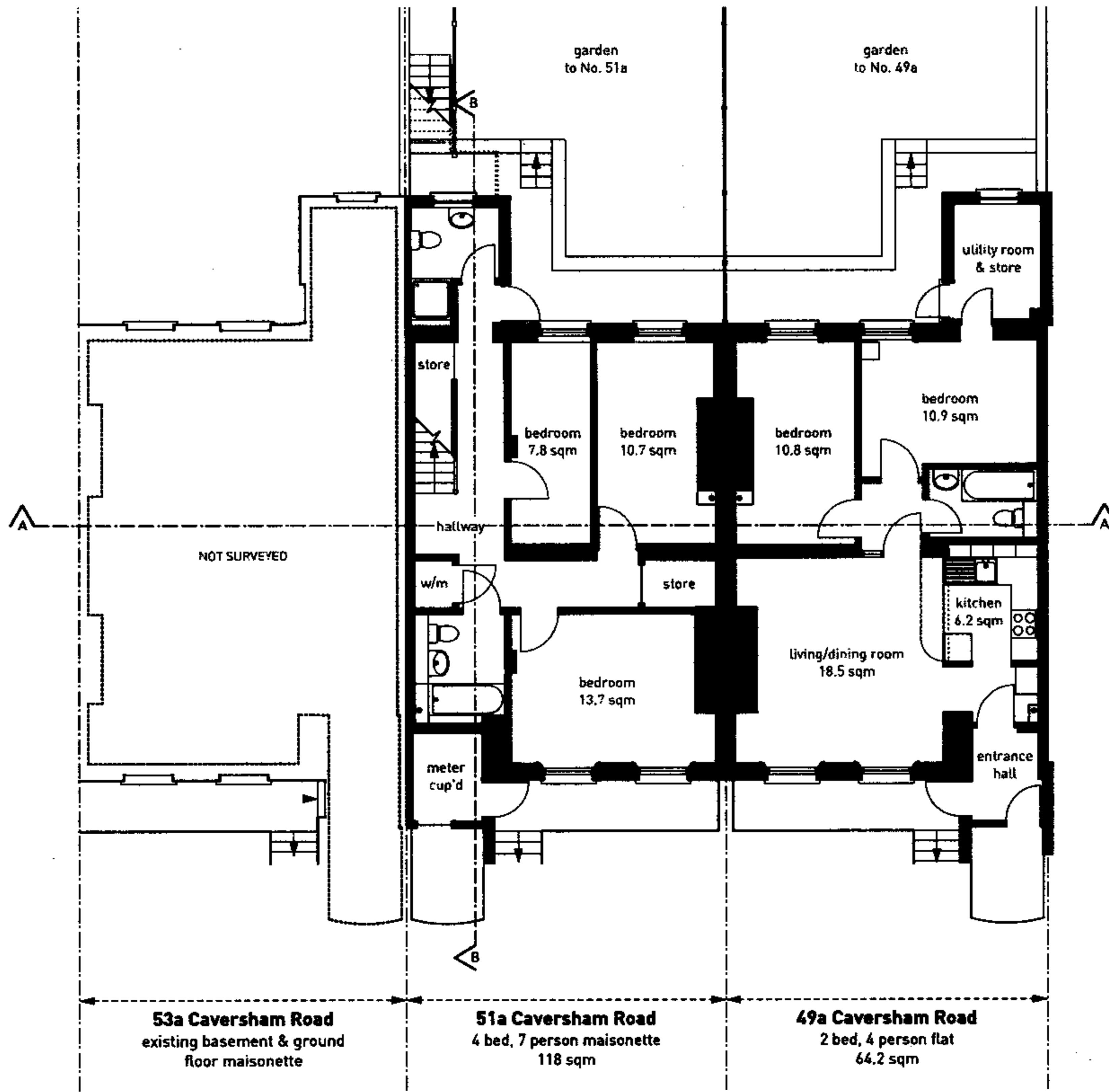
Scale: 1:200

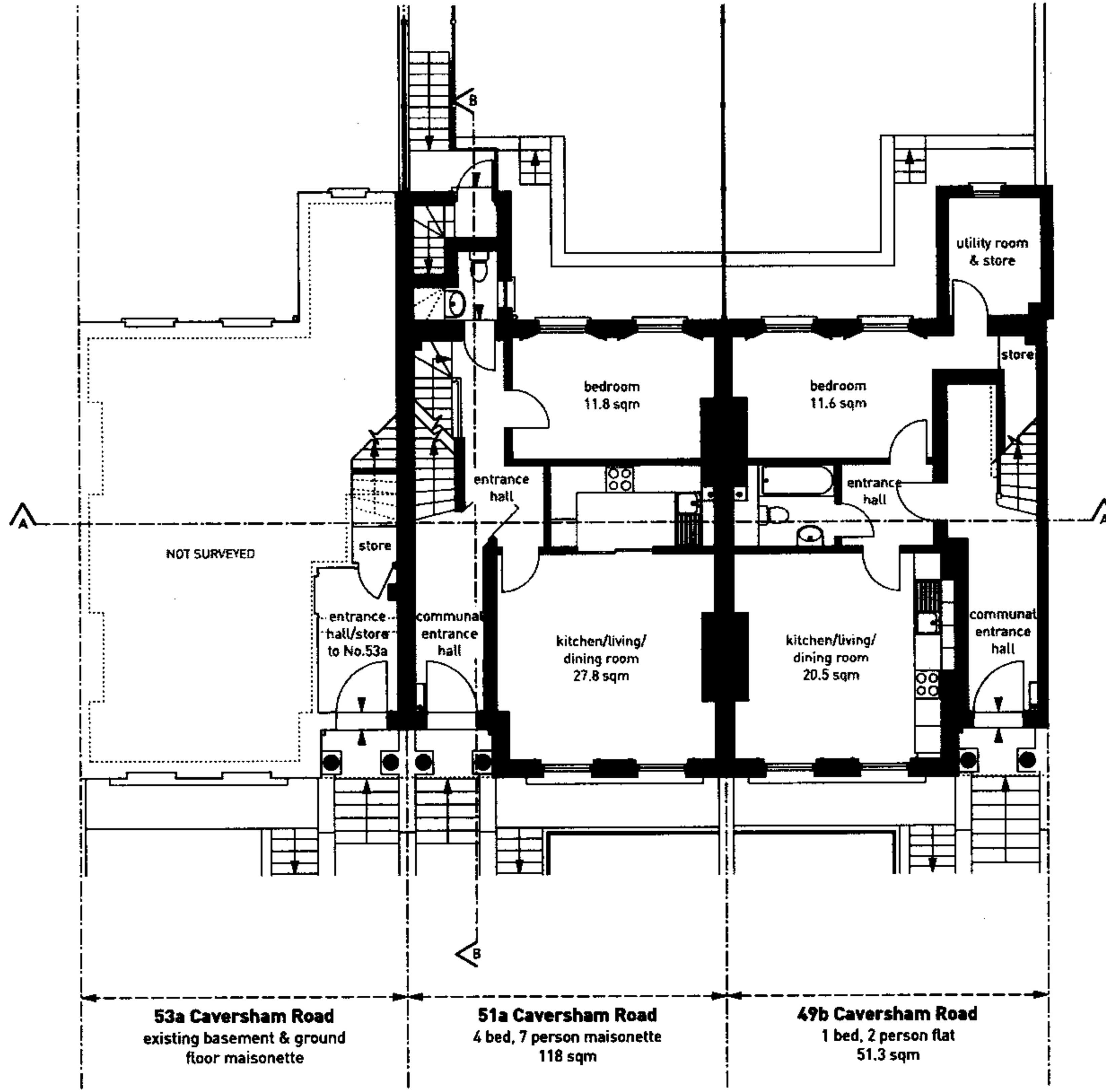
Drawing Number:

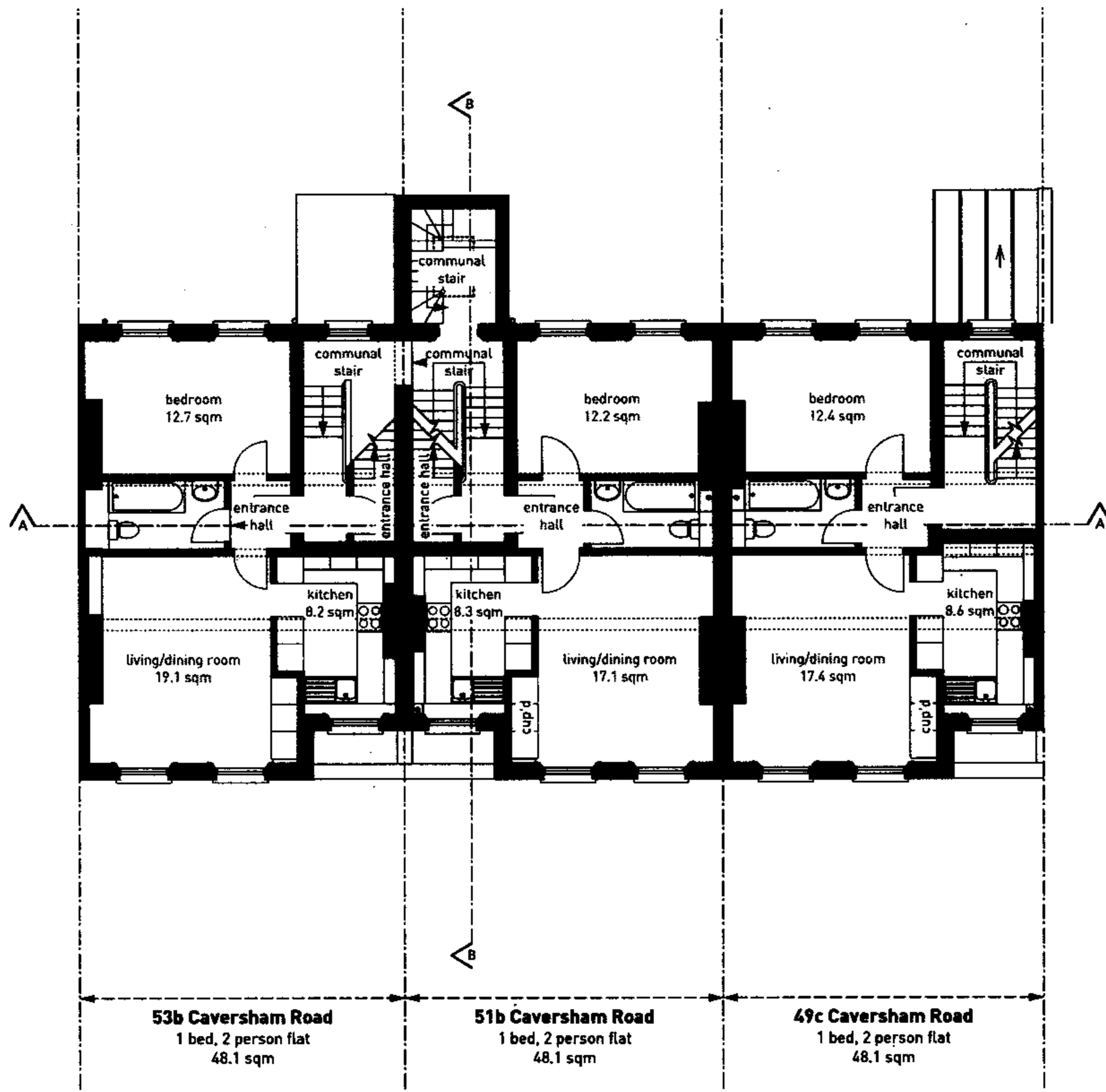
Date: July 2005

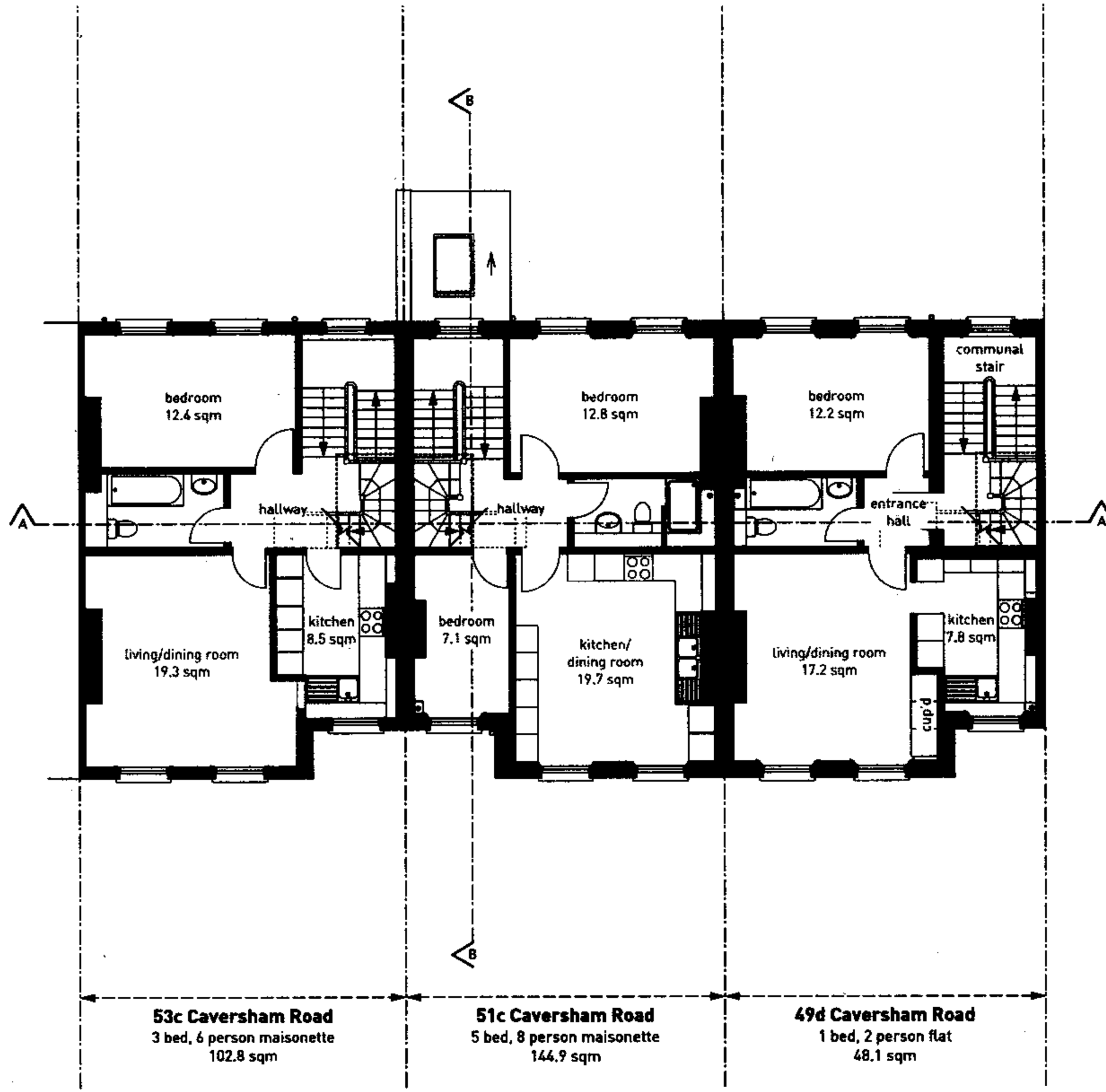
0071-CR49-53-P01

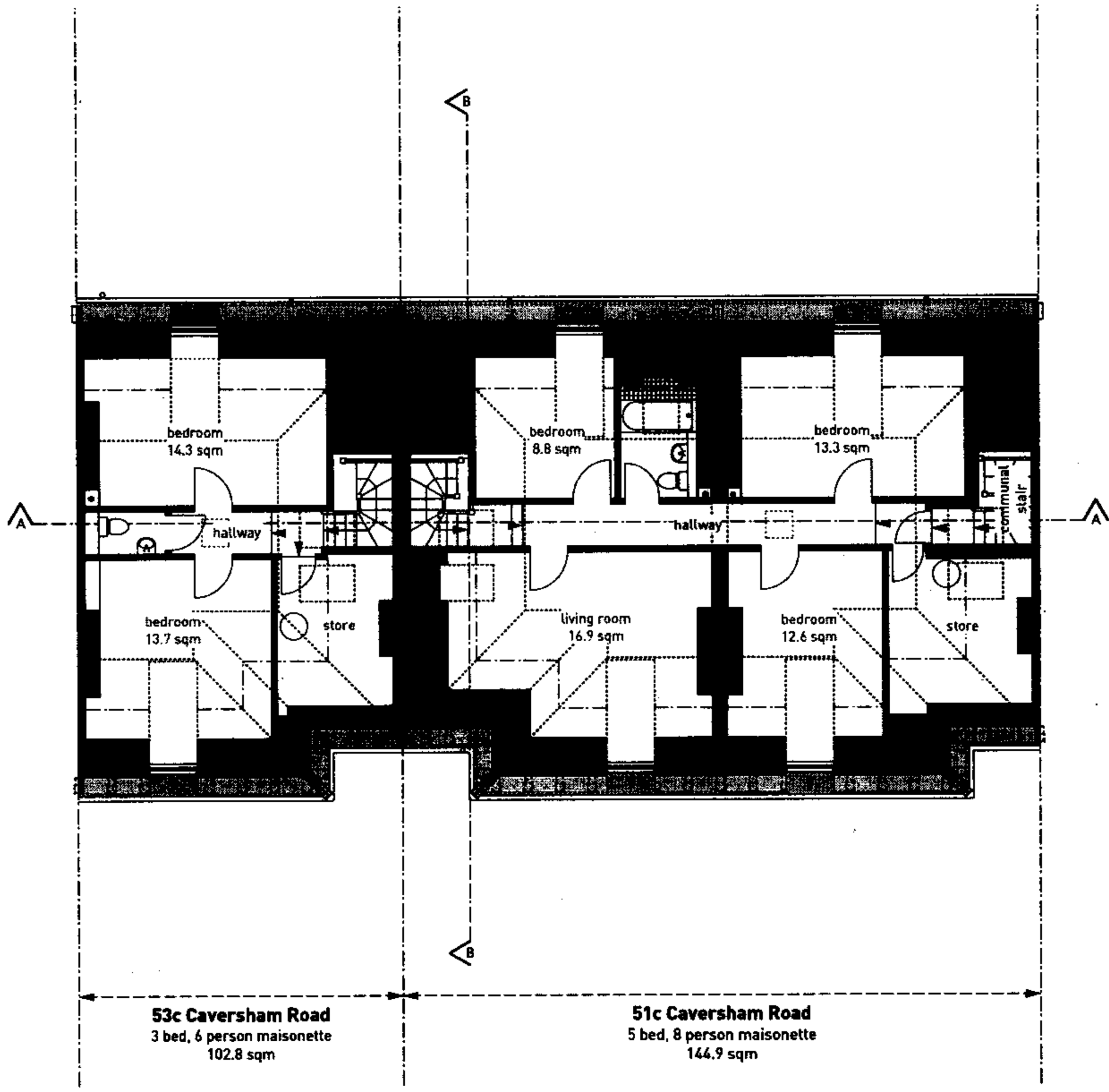
Site Plan - As Proposed









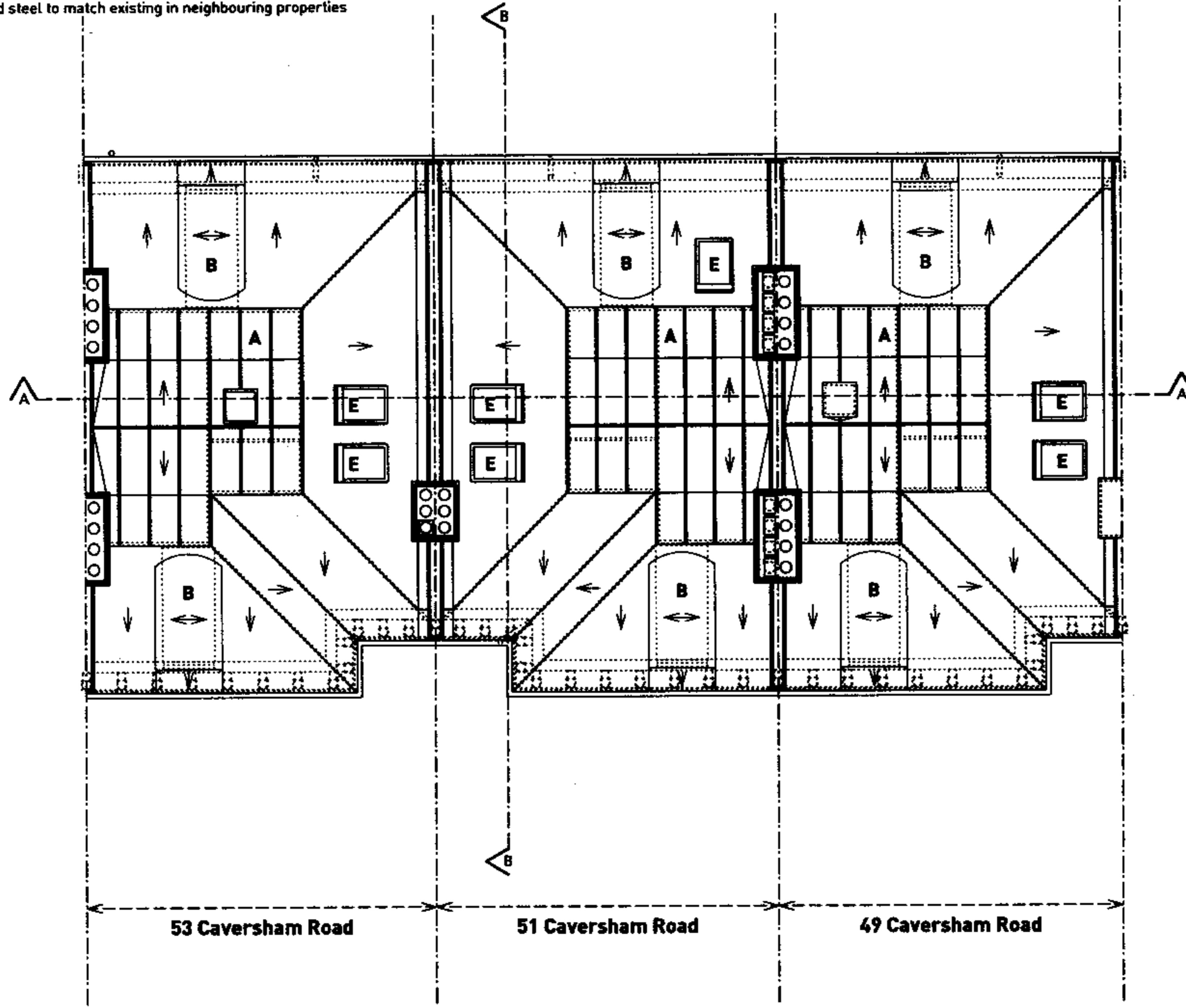


53c Caversham Road
 3 bed, 6 person maisonette
 102.8 sqm

51c Caversham Road
 5 bed, 8 person maisonette
 144.9 sqm

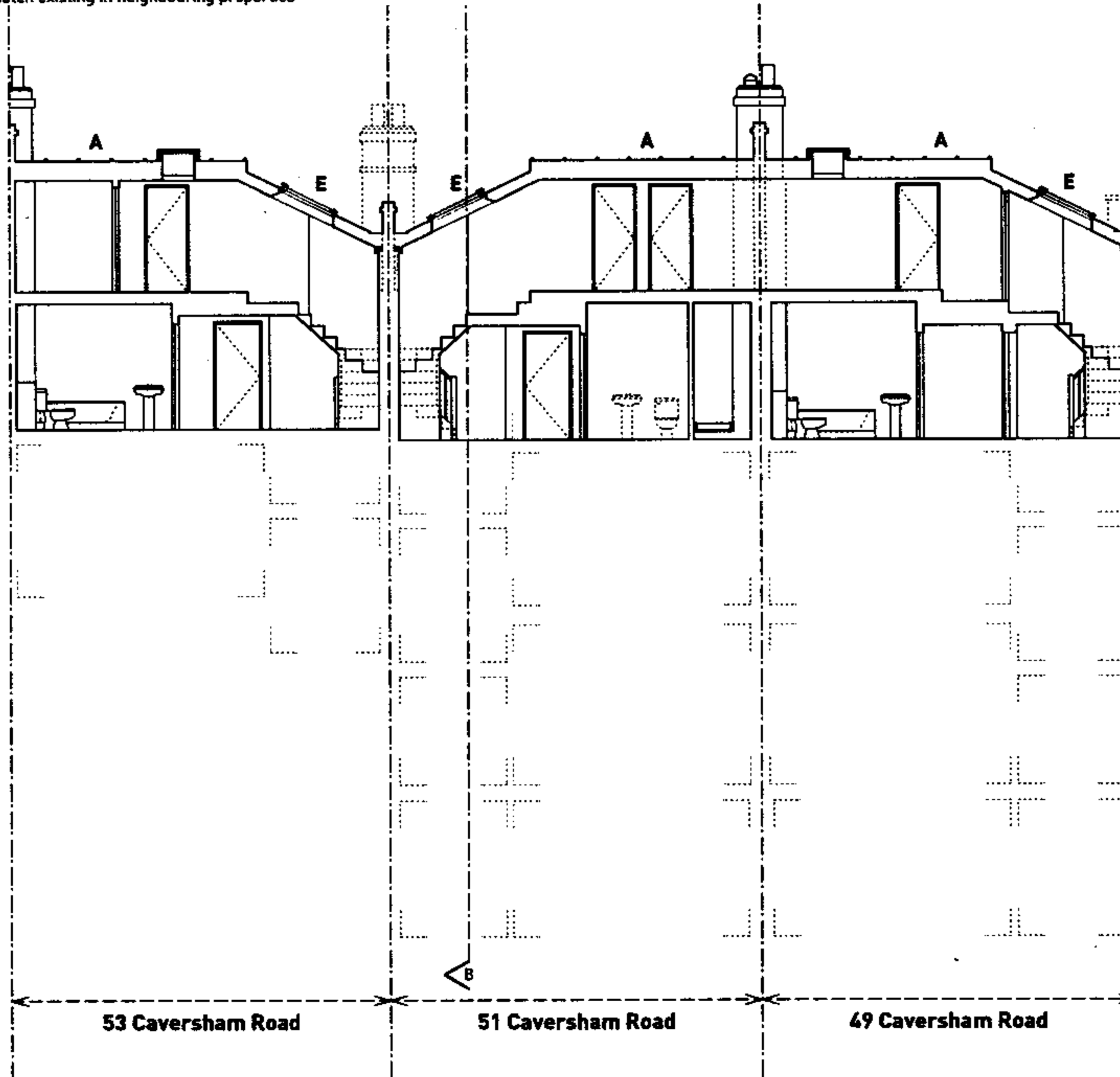
KEY:

- A existing asphalt flat roofs renewed with lead-roll construction
- B lead-clad dormers with painted timber double-glazed sash windows - to match existing on adjacent properties (Nos. 45, 47 & 59)
- C back addition raised to allow internal garden access stair - new pitched roof in artificial slates
- D windows to be replaced with painted timber double-glazed sashes to match existing adjacent - other windows found to be beyond repair to be similarly replaced
- E new rooflight
- F new painted timber casement window in existing opening
- G doors removed and original window openings reinstated with painted timber double-glazed sash windows to match existing adjacent
- H new painted timber glazed doors in modified openings
- I new galvanized steel garden-access stair and balcony
- J new timber fence min. 1800mm high on top of brick wall adjacent to garden access stair, as privacy screen
- K new party parapet wall with once-weathered pcc coping
- L renewed railings with painted steel to match existing in neighbouring properties



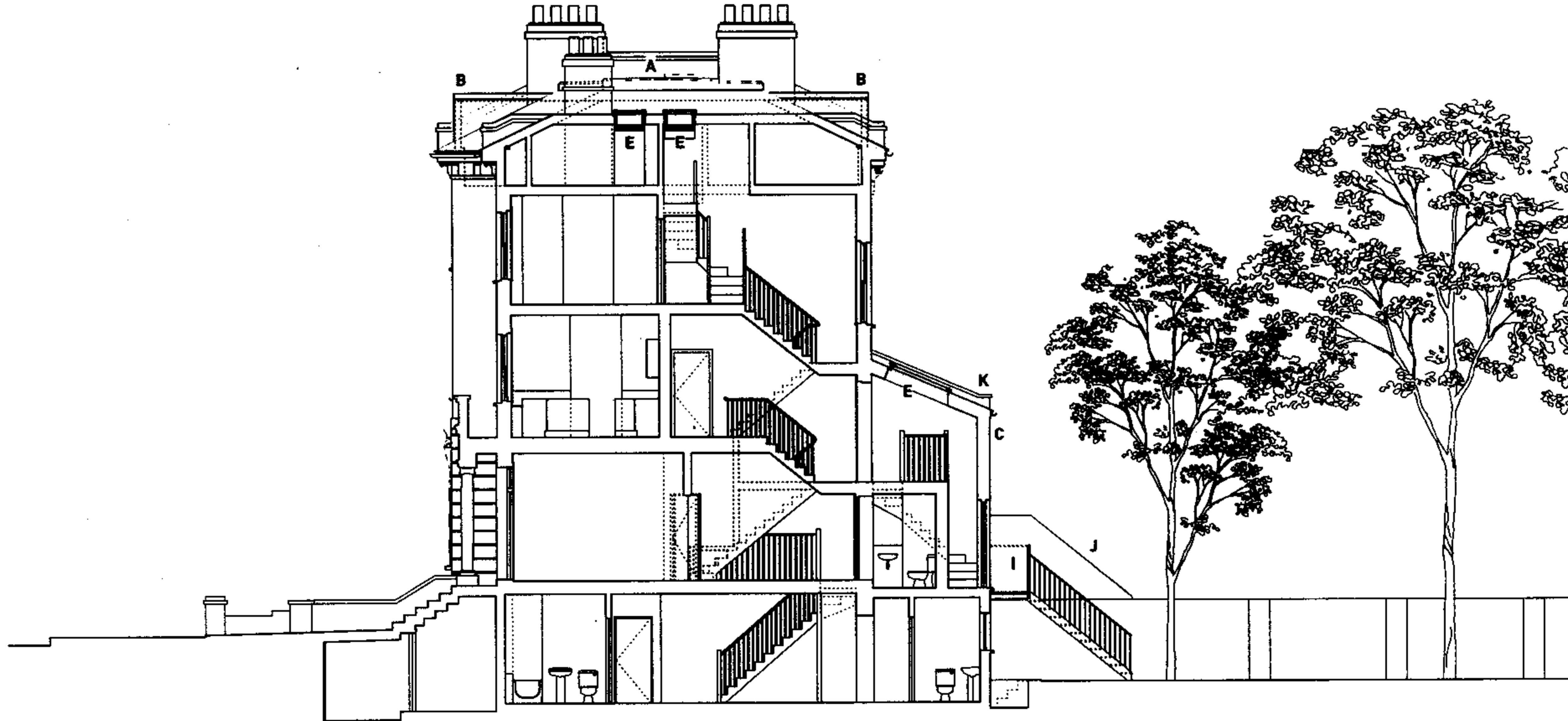
KEY:

- A existing asphalt flat roofs renewed with lead-roll construction
- B lead-clad dormers with painted timber double-glazed sash windows - to match existing on adjacent properties (Nos. 45, 47 & 59)
- C back addition raised to allow internal garden access stair - new pitched roof in artificial slates
- D windows to be replaced with painted timber double-glazed sashes to match existing adjacent - other windows found to be beyond repair to be similarly replaced
- E new rooflight
- F new painted timber casement window in existing opening
- G doors removed and original window openings reinstated with painted timber double-glazed sash windows to match existing adjacent
- H new painted timber glazed doors in modified openings
- I new galvanized steel garden-access stair and balcony
- J new timber fence min. 1800mm high on top of brick wall adjacent to garden access stair, as privacy screen
- K new party parapet wall with once-weathered pcc coping
- L renewed railings with painted steel to match existing in neighbouring properties



KEY:

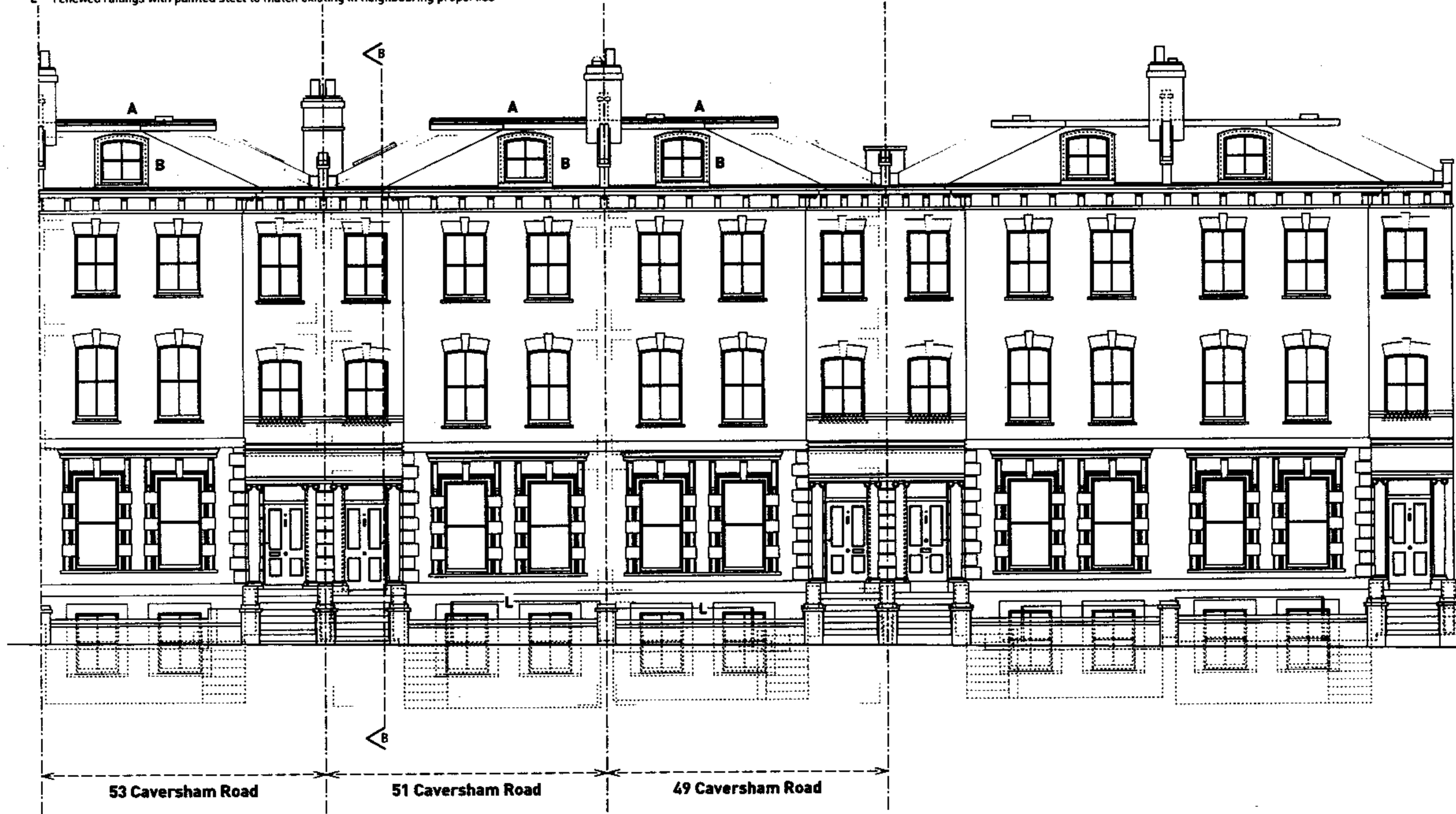
- A existing asphalt flat roofs renewed with lead-roll construction
- B lead-clad dormers with painted timber double-glazed sash windows - to match existing on adjacent properties (Nos. 45, 47 & 59)
- C back addition raised to allow internal garden access stair - new pitched roof in artificial slates
- D windows to be replaced with painted timber double-glazed sashes to match existing adjacent - other windows found to be beyond repair to be similarly replaced
- E new rooflight
- F new painted timber casement window in existing opening
- G doors removed and original window openings reinstated with painted timber double-glazed sash windows to match existing adjacent
- H new painted timber glazed doors in modified openings
- I new galvanized steel garden-access stair and balcony
- J new timber fence min. 1800mm high on top of brick wall adjacent to garden access stair, as privacy screen
- K new party parapet wall with once-weathered pcc coping
- L renewed railings with painted steel to match existing in neighbouring properties



AGATE SHORT ARCHITECTS 49-53 Caversham Road, London NW5
 8 WATSON STREET LONDON E2 8HL
 T 020 7739 7151 F 020 7739 3447
 E INFO@AGATESHORT.CO.UK WWW.AGATESHORT.CO.UK
 Drawing Number: 0071-CR49-53-P09
 Scale: 1:100
 Date: July 2005
 Section BB - As Proposed

KEY:

- A existing asphalt flat roofs renewed with lead-roll construction
- B lead-clad dormers with painted timber double-glazed sash windows - to match existing on adjacent properties (Nos. 45, 47 & 59)
- C back addition raised to allow internal garden access stair - new pitched roof in artificial slates
- D windows to be replaced with painted timber double-glazed sashes to match existing adjacent - other windows found to be beyond repair to be similarly replaced
- E new rooflight
- F new painted timber casement window in existing opening
- G doors removed and original window openings reinstated with painted timber double-glazed sash windows to match existing adjacent
- H new painted timber glazed doors in modified openings
- I new galvanized steel garden-access stair and balcony
- J new timber fence min. 1800mm high on top of brick wall adjacent to garden access stair, as privacy screen
- K new party parapet wall with once-weathered pcc coping
- L renewed railings with painted steel to match existing in neighbouring properties



AGATE SHORT ARCHITECTS 49-53 Caversham Road, London NW5
 8 WATERSON STREET LONDON E2 0HL
 T 020 7739 9131 F 020 7739 3487
 E INFO@AGATESHORT.CO.UK WWW.AGATESHORT.CO.UK

Scale: 1:100 Date: July 2005

Drawing Number: 0071-CR49-53-P10

Front Elevation - As Proposed

KEY:

- A existing asphalt flat roofs renewed with lead-roll construction
- B lead-clad dormers with painted timber double-glazed sash windows - to match existing on adjacent properties (Nos. 45, 47 & 59)
- C back addition raised to allow internal garden access stair - new pitched roof in artificial slates
- D windows to be replaced with painted timber double-glazed sashes to match existing adjacent - other windows found to be beyond repair to be similarly replaced
- E new rooflight
- F new painted timber casement window in existing opening
- G doors removed and original window openings reinstated with painted timber double-glazed sash windows to match existing adjacent
- H new painted timber glazed doors in modified openings
- I new galvanized steel garden-access stair and balcony
- J new timber fence min. 1800mm high on top of brick wall adjacent to garden access stair, as privacy screen
- K new party parapet wall with once-weathered pcc coping
- L renewed railings with painted steel to match existing in neighbouring properties

