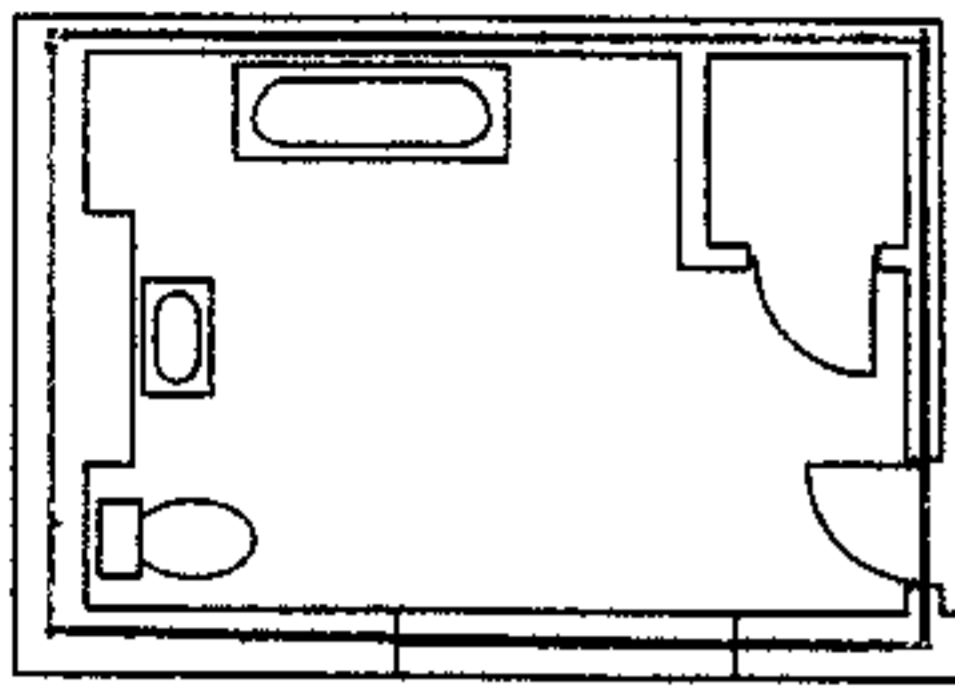


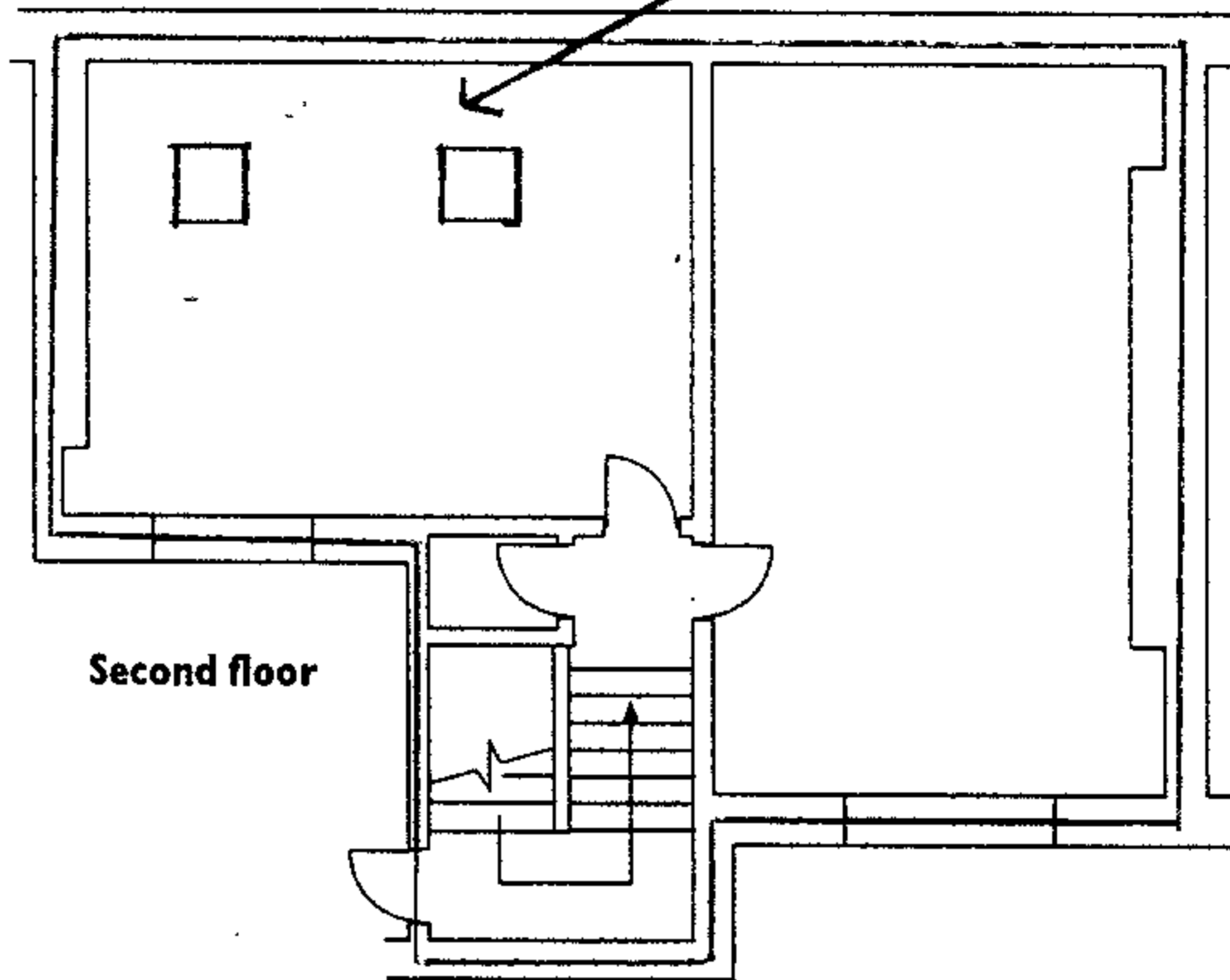
(Sum 1)

189b Sumatra Road NW6

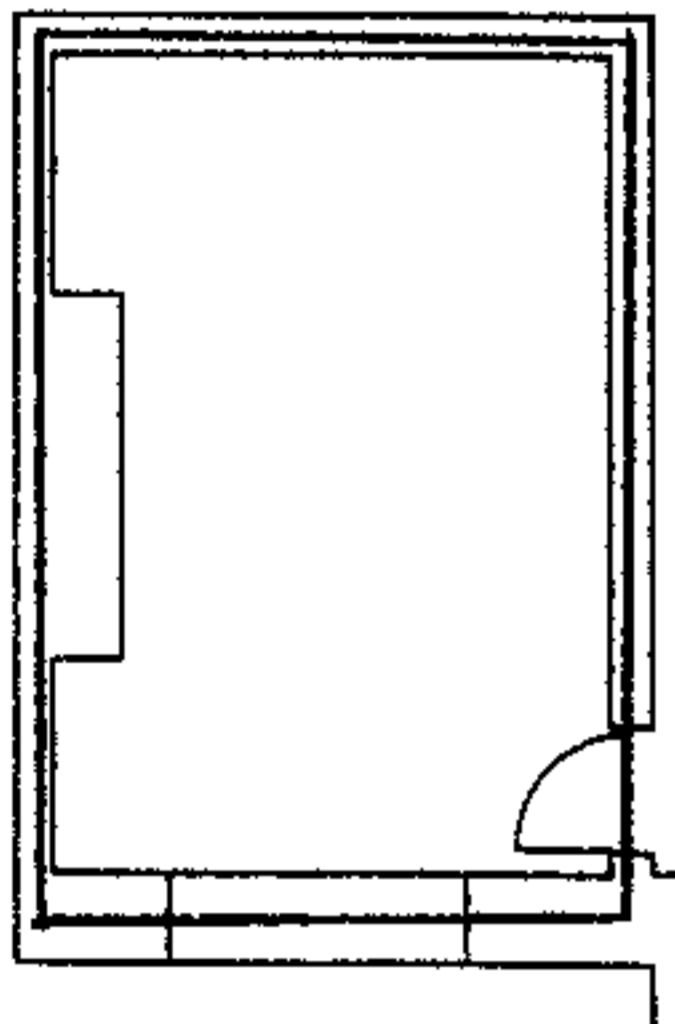
Velux windows



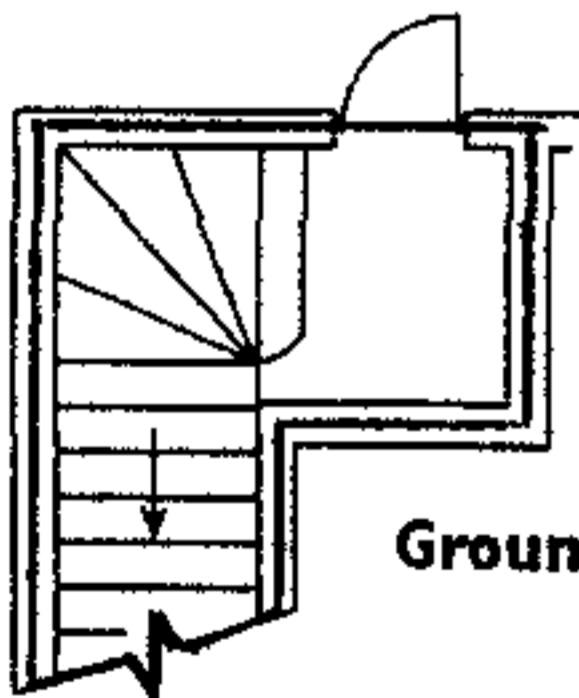
First floor
mezzanine level



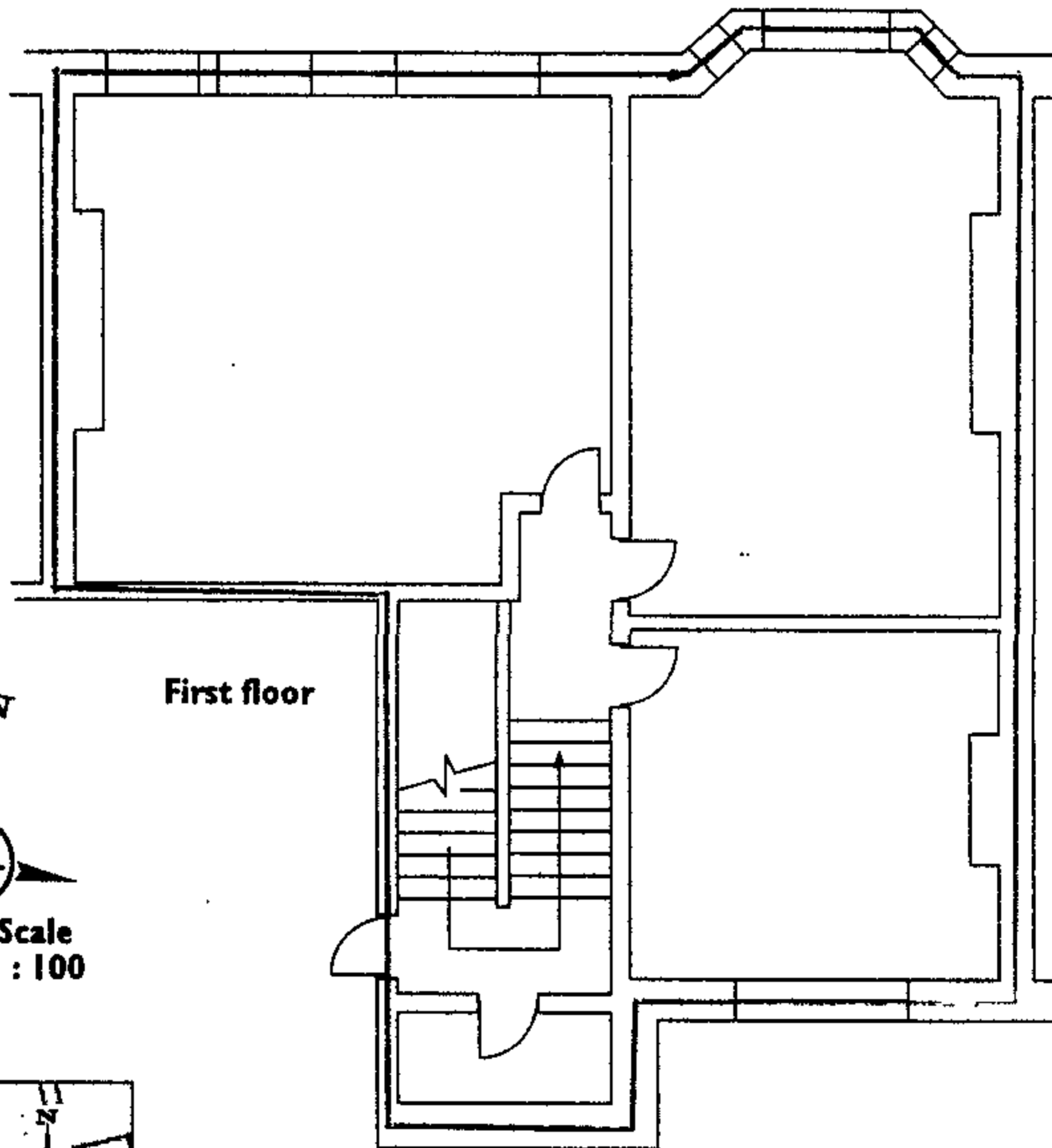
Second floor



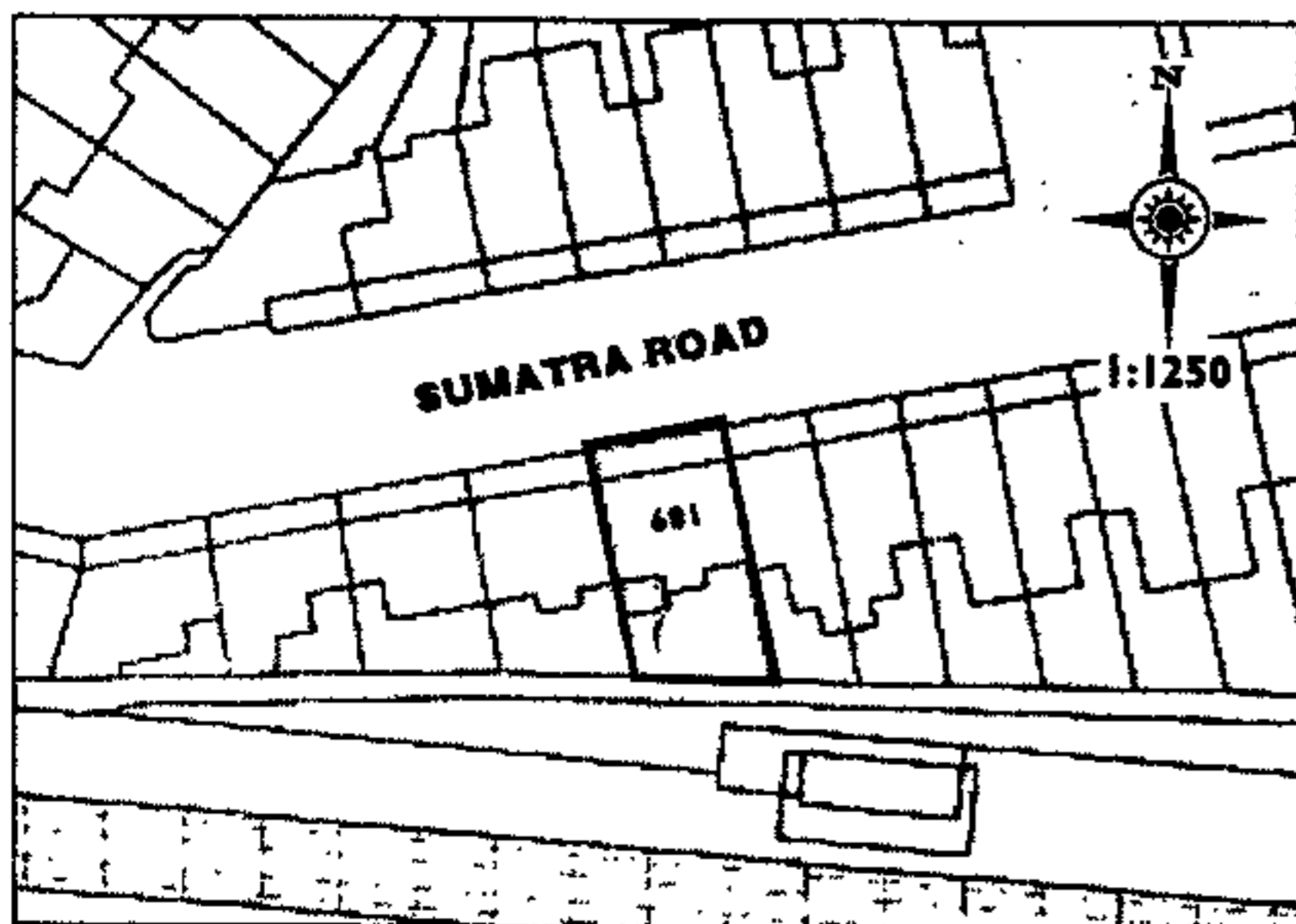
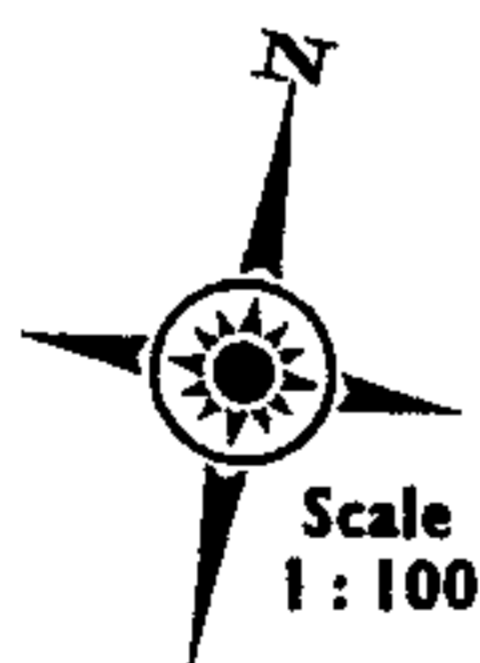
Ground floor
mezzanine level



Ground floor



First floor



The Ordnance Survey extract defines the curtilage of 189 Sumatra Road outlined in heavy black; the extent of the demised flat to be ascertained from the large plan(s).

The large plan identifies by red outline at floor level the demised premises.