

Notes

For main bar details refer to JS-601

bedrock

Bedrock Design Consultants Ltd
57 Hatton Garden, 4th Floor, London, EC1N 8HP

T 020 3116 0120
F 020 3116 0121
john@bedrockdesign.co.uk

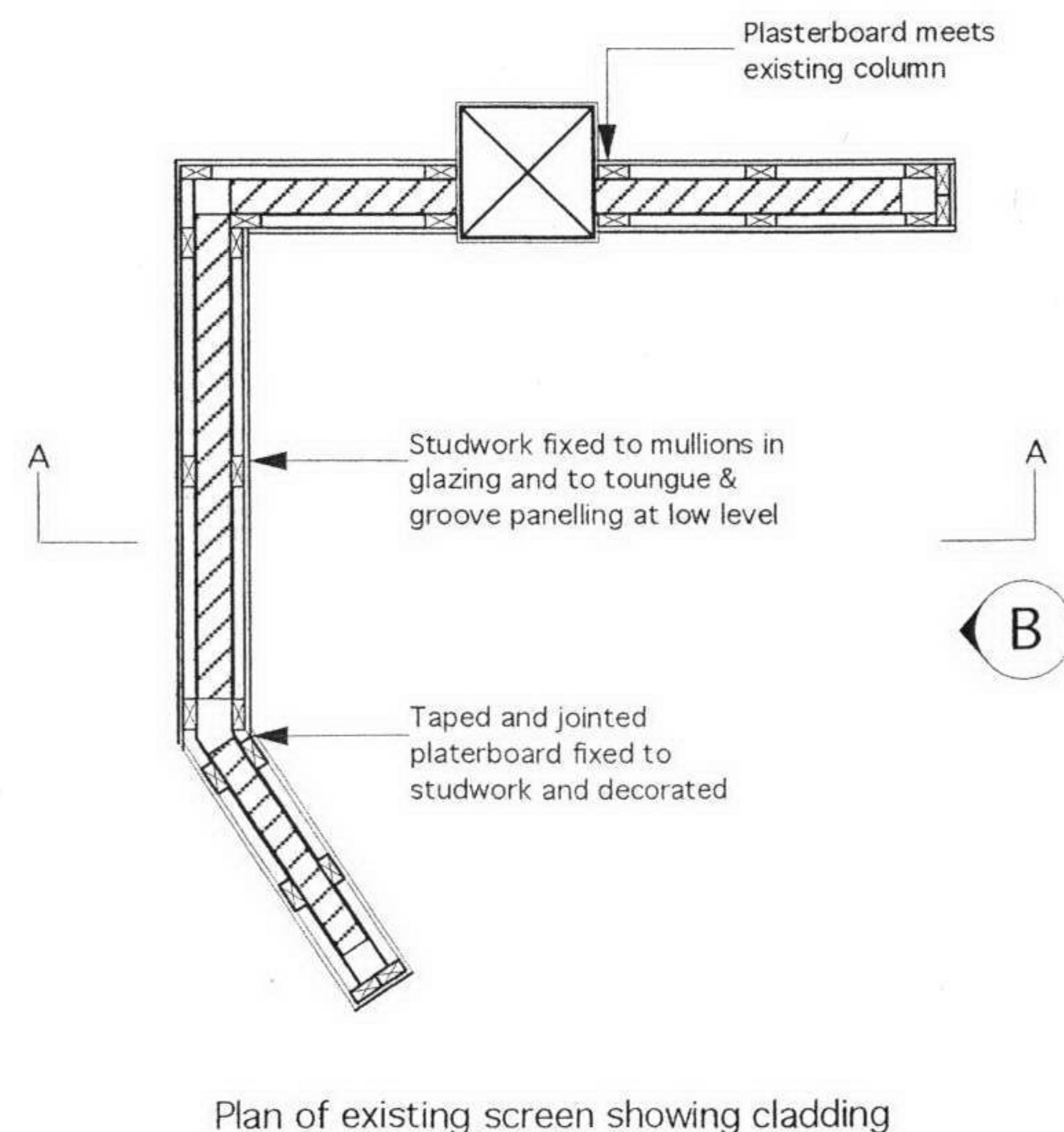
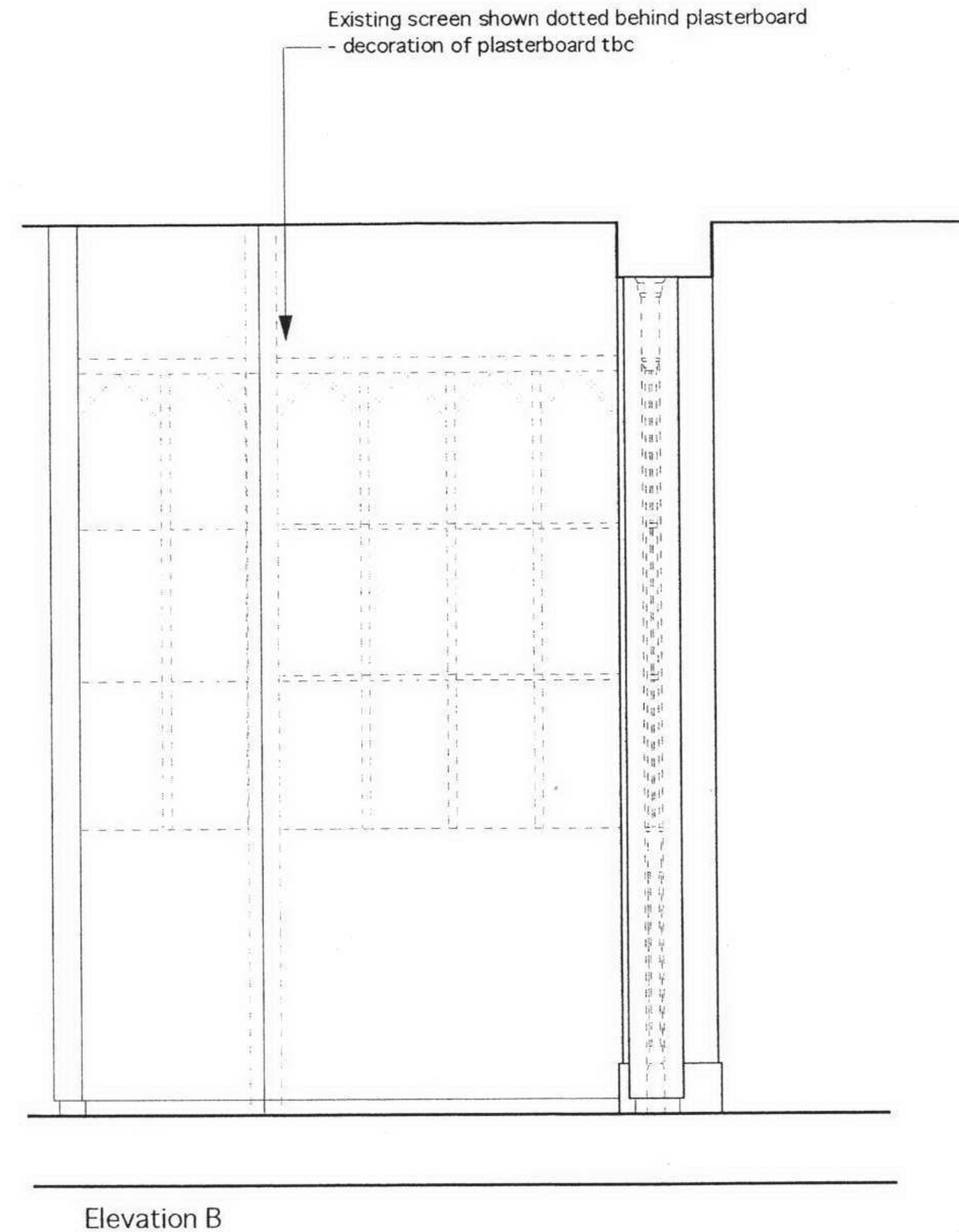
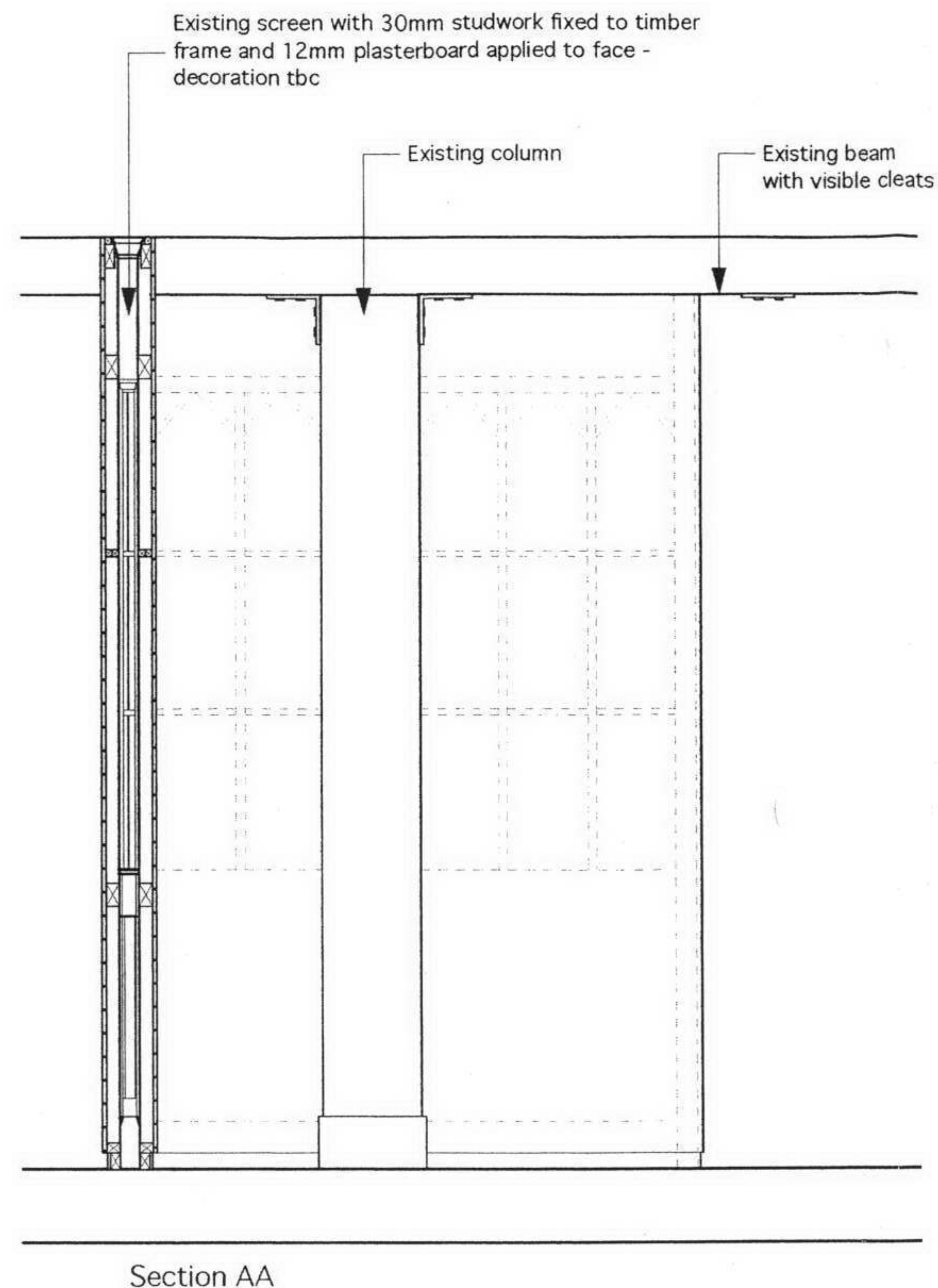
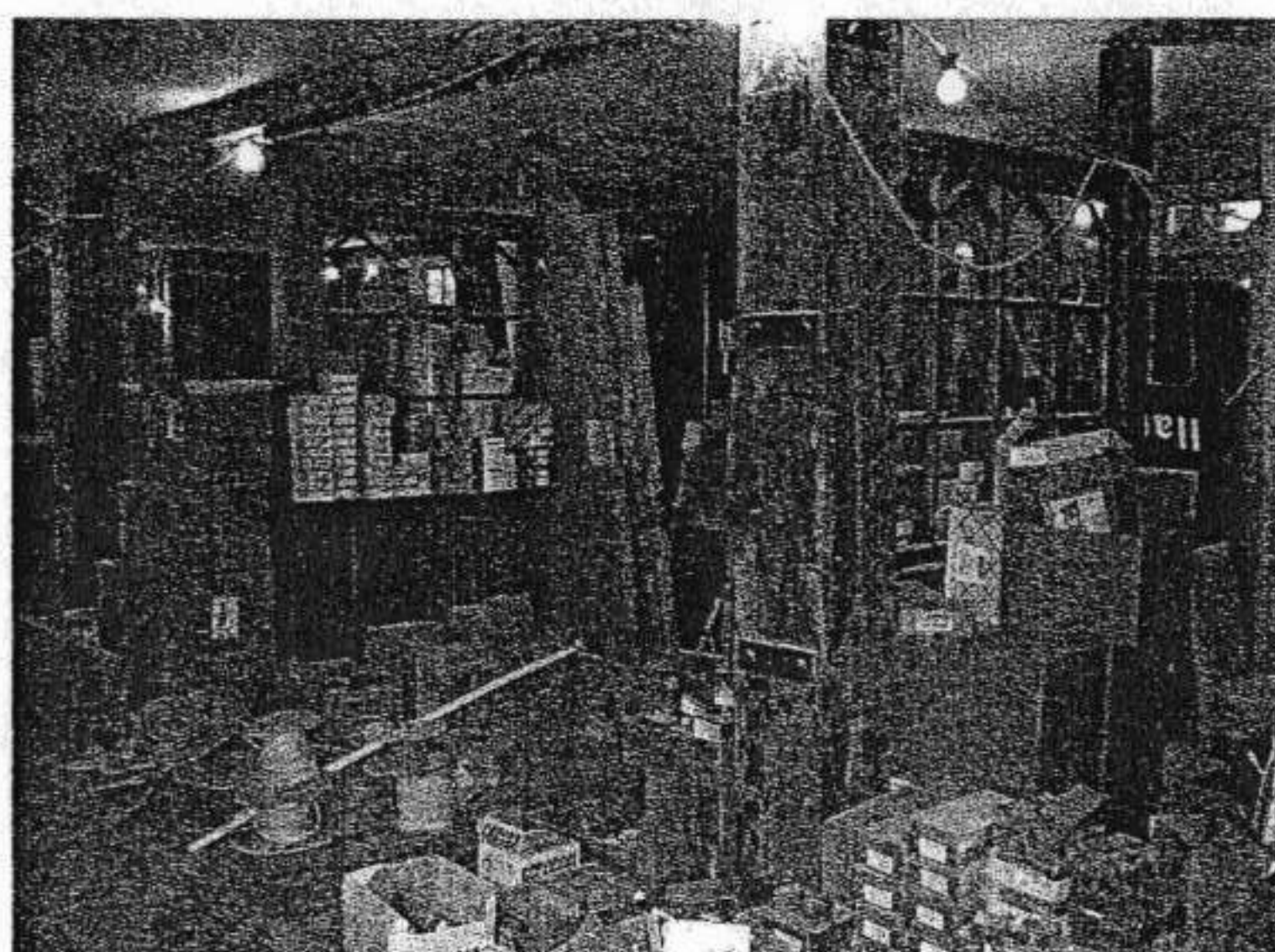
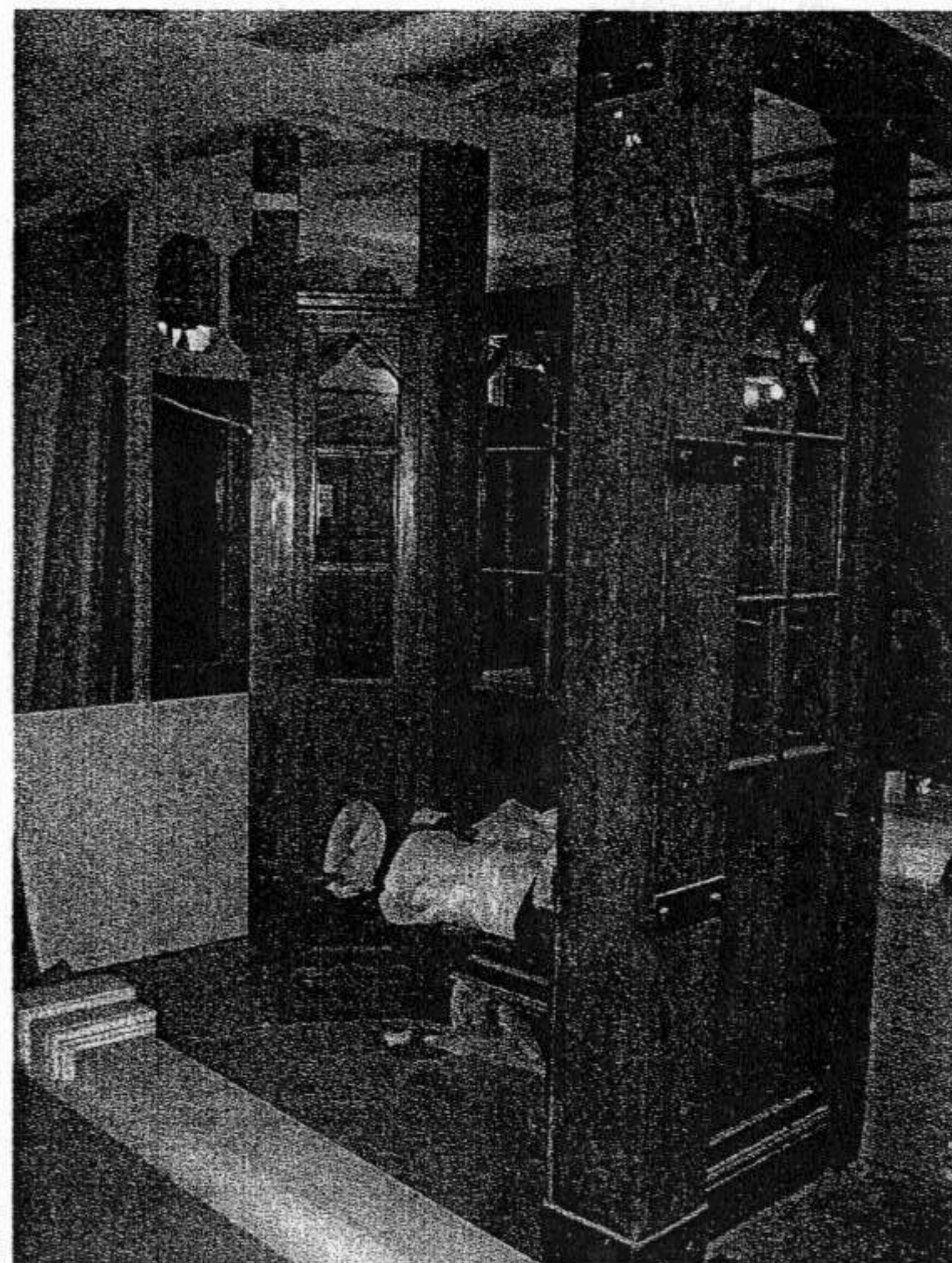
Client
Kids Planet

Project
Jack Straw's Castle

Description
'Playstation'

Scale 1/20	Drawn by NB	Date 17/03/06
Drawing N° JS/202	Revision B	

This drawing is the copyright of Bedrock Design Consultants Ltd. This drawing cannot be copied, reproduced, retained or disclosed to any unauthorised person without prior permission in writing from the designer.



Rev N°	Description	Date

Notes

bedrock

Bedrock Design Consultants Ltd
57 Hatton Garden, 4th Floor, London, EC1N 8HP

T 020 3118 0120
F 020 3118 0121
john@bedrockdesign.co.uk

Client
Kids Planet

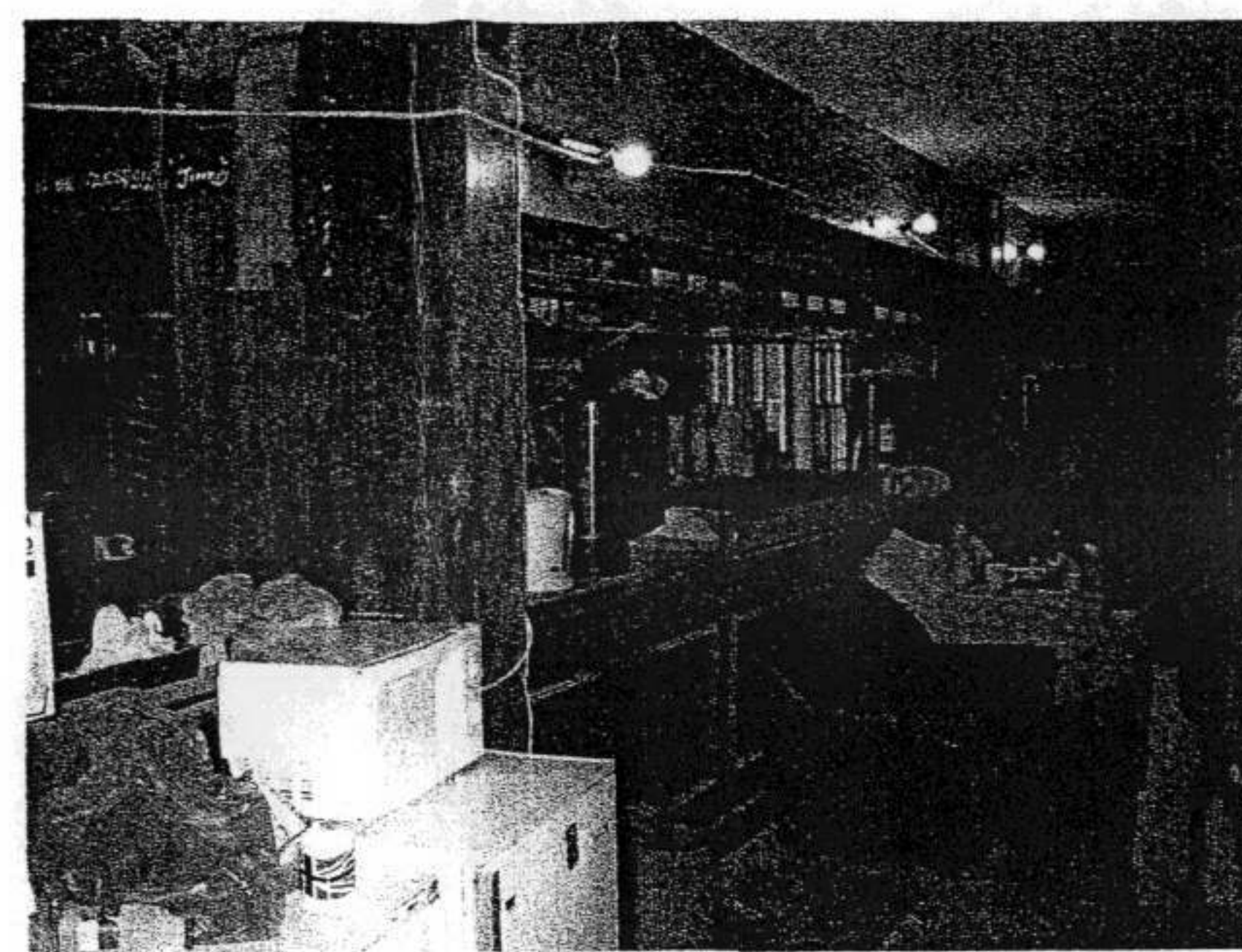
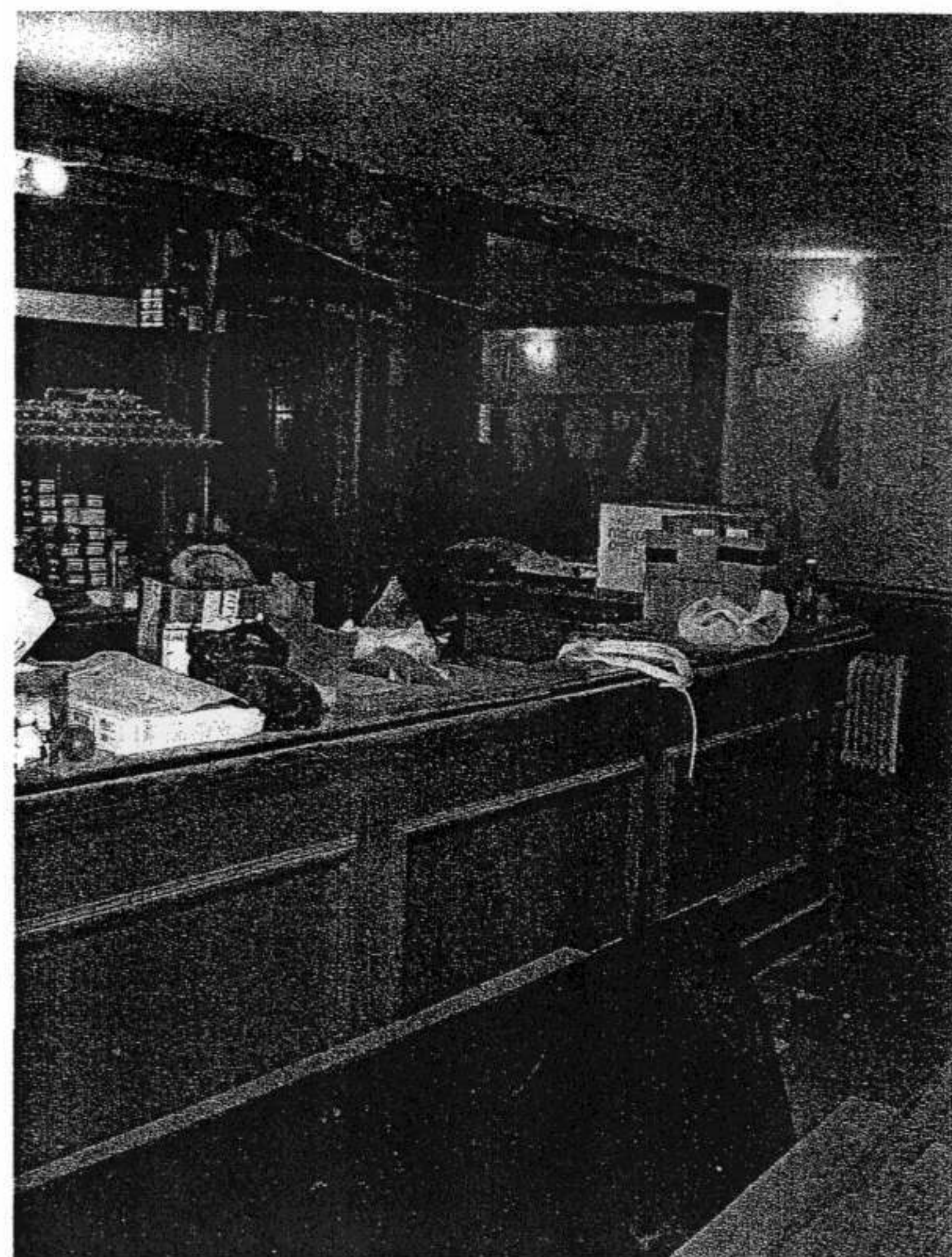
Project
Jack Straw's Castle

Description
Screen cladding detail

Scale	Drawn by	Date
1/25	NB	03/05/06

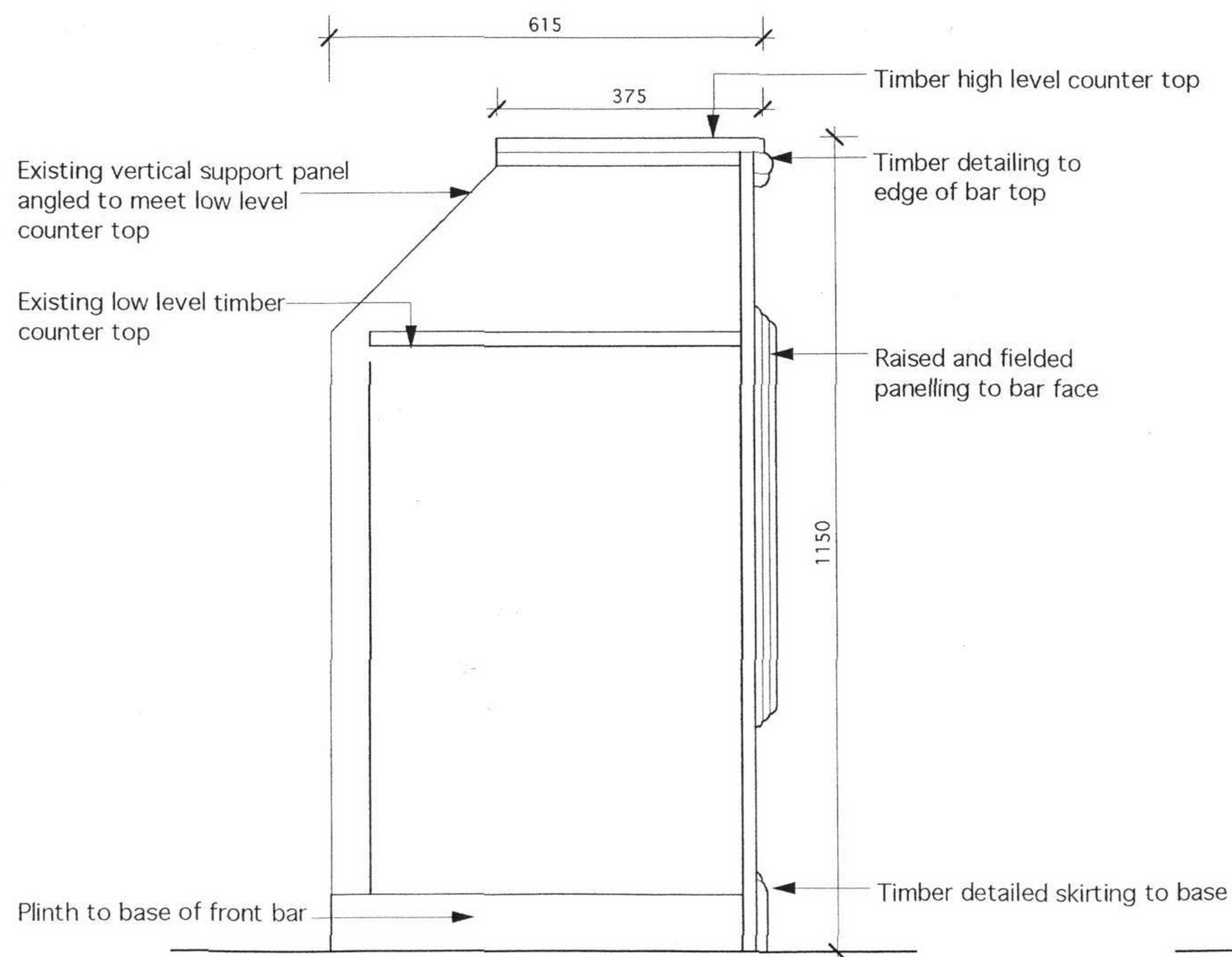
Drawing N°	Revision
JS/600	/

This drawing is the copyright of Bedrock Design Consultants Ltd. This drawing cannot be copied, reproduced, retained or disclosed to any unauthorised person without prior permission in writing from the designer.

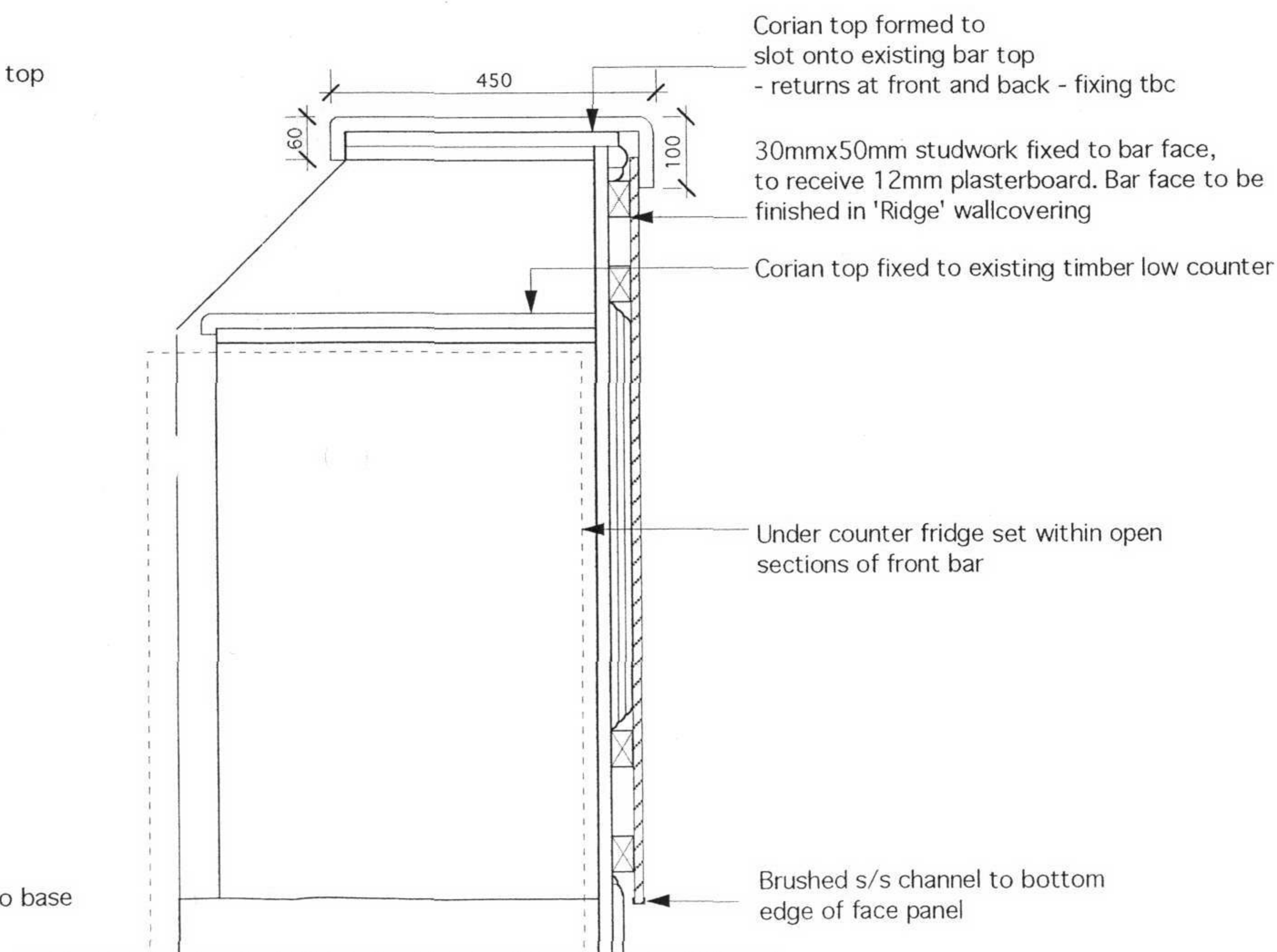


Rev N°	Description	Date

Notes
For return bar details refer to JS-202



Section through existing front bar



Section through proposed front bar
- Main servery bar

bedrock

Bedrock Design Consultants Ltd
57 Hatton Garden, 4th Floor, London, EC1N 8HP

T 020 3116 0120
F 020 3116 0121
john@bedrockdesign.co.uk

Client
Kids Planet

Project
Jack Straw's Castle

Description
Front bar cladding detail

Scale
1/10

Drawn by
NB

Date
03/05/06

Drawing N°
JS/601

Revision
/

This drawing is the copyright of Bedrock Design Consultants Ltd. This drawing cannot be copied, reproduced, retained or disclosed to any unauthorised person without prior permission in writing from the designer.