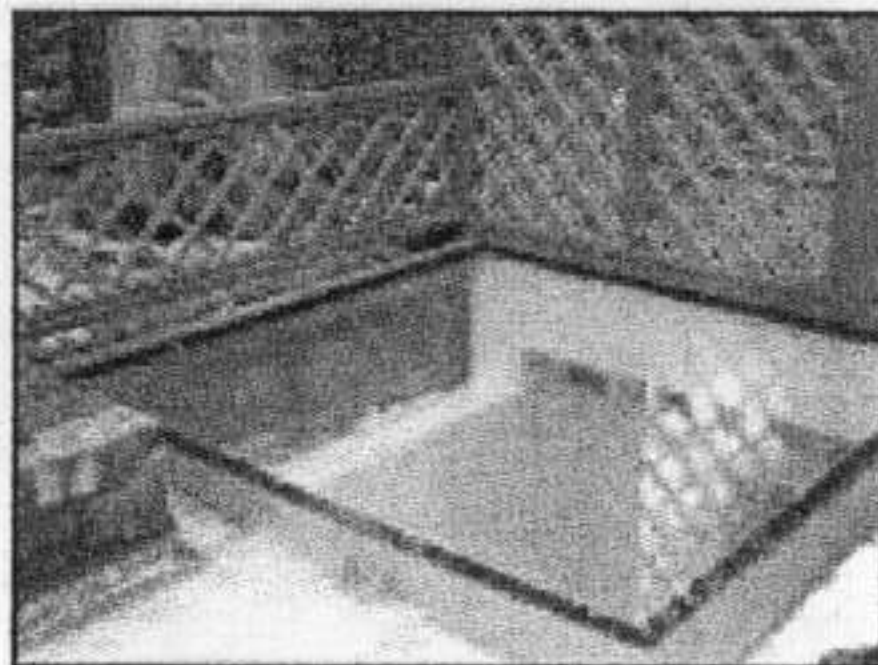
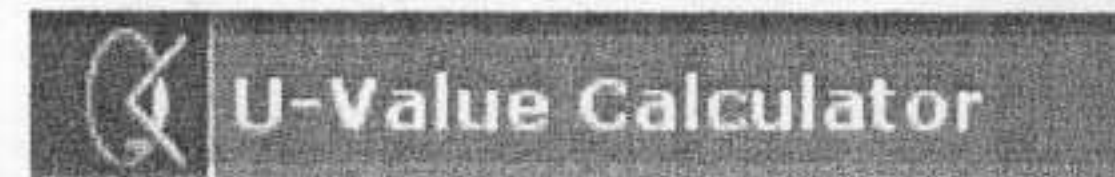
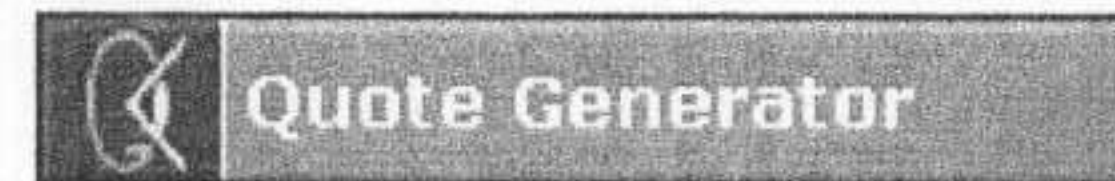


## Rooflights and Skylights - Flushglaze Rooflight



### NEW FEATURES AVAILABLE:

- Warm edge- high performance glazing now available

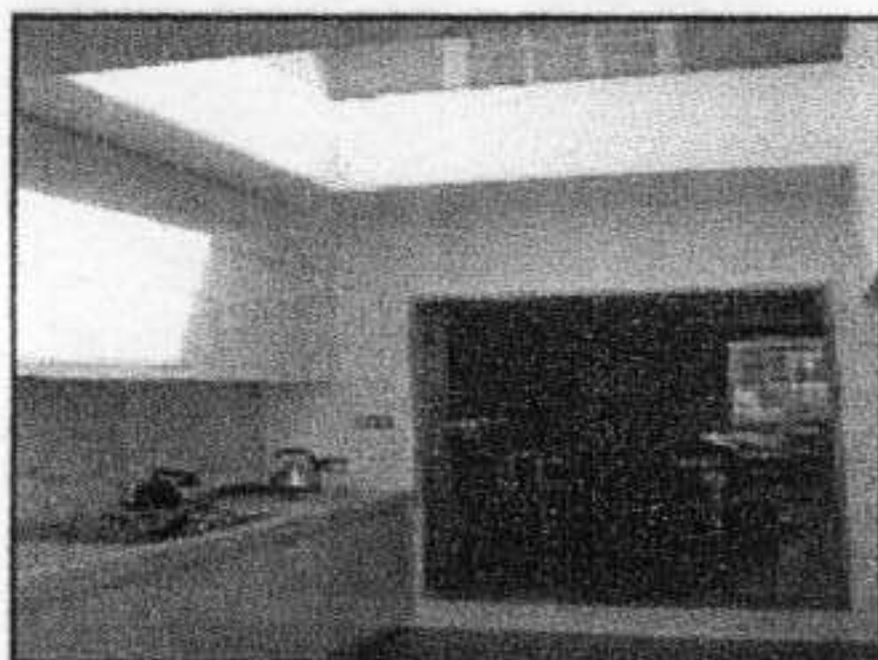


[Introduction](#) | [Features](#) | [Standard Sizes](#) | [Options](#)  
[Specifications](#) | [Installation](#) | [Price and Delivery Guide](#) |

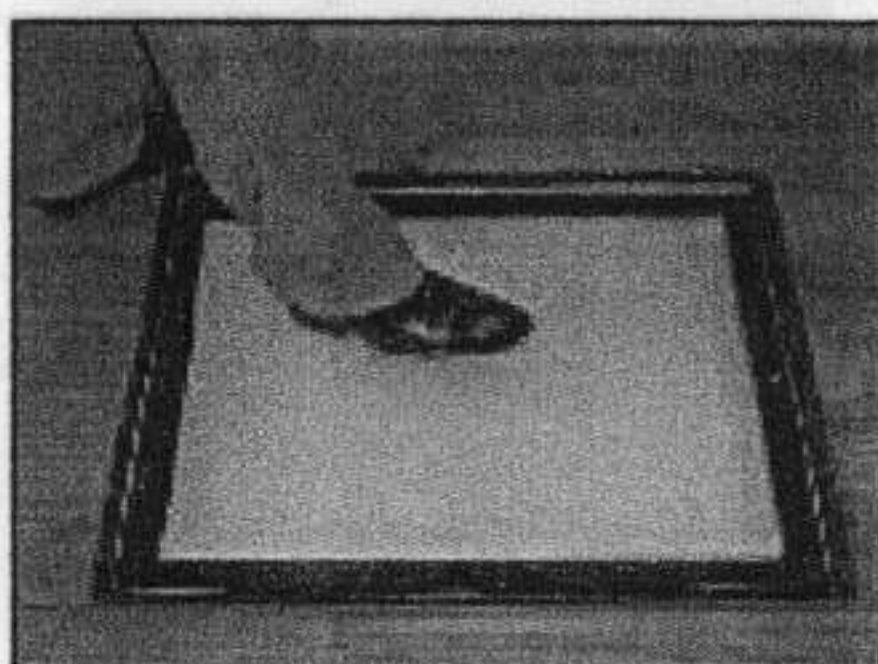
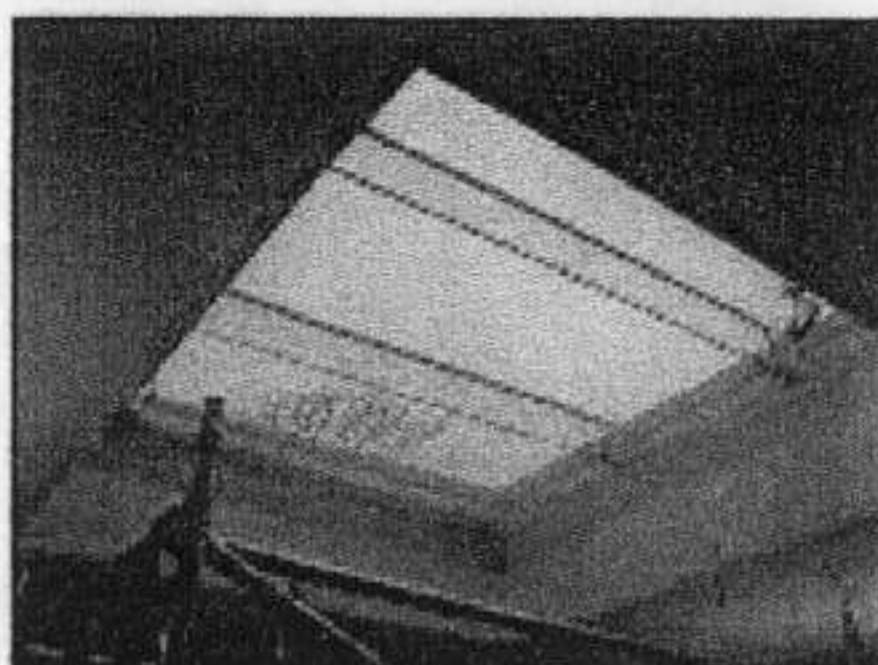
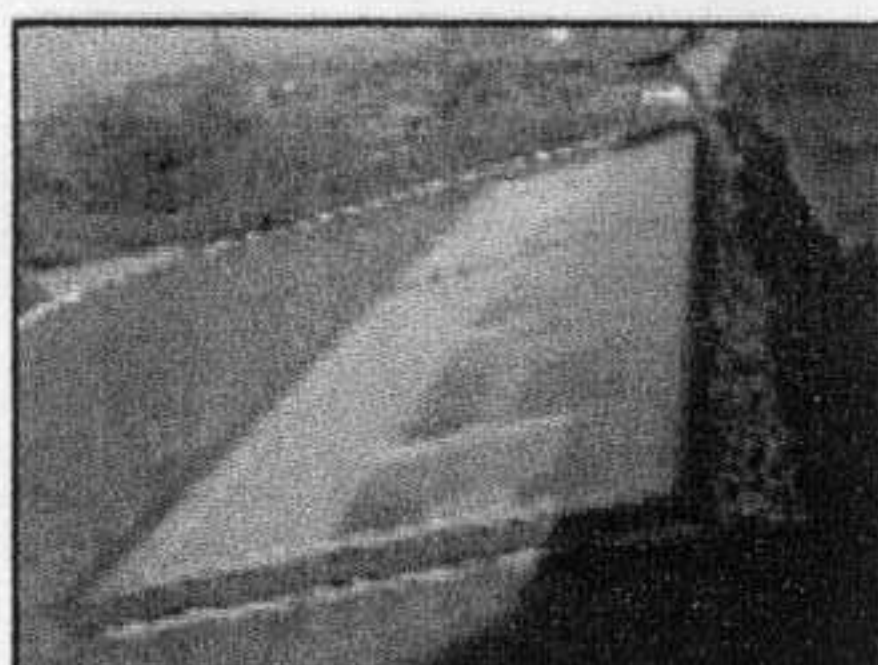
### Introduction

The Flushglaze is a fixed flat glass skylight, the concept is based on an innovative design to achieve maximum daylight, longevity and high performance. The Flushglaze low profile system is based on car windscreen technology, the glass being structurally bonded and triple sealed making it ideal for flat roof applications. Keeping water ponding and condensation risks to a minimum by the elimination of internal flashings and metalwork. Flushglaze units are suitable for flat and sloped rooflight applications. The rooflight can be extended to any length by linking sections together and sealing between the units, framed opening sections of the [Visionvent](#) can be added for ventilation and access. Standard and bespoke sizes are available.

The Flushglaze is a stylish and cost effective solution for long runs of roof ribbon style glazing. The rooflight is supplied in pre-assembled 4m long modules ready for craning and rapid on-site installation







---

[Top](#) ☐

### Features

Maximum daylight - no internal framework  
Easy clean and low maintenance  
High Thermal Performance  
Double glazed with triple seals  
Low emmissivity coating  
Safety glass to both panes  
Guaranteed long life clarity (subject to 3 month cleaning intervals)  
Simple installation

**Glass Fin Supports**  
available for  
larger spans

---

[Top](#) ☐

### Standard Sizes

1m x 1m, 1m x 1.5m, 1m x 2m  
[only for standard Flushglaze without any options below]

---

[Top](#) ☐

### Options

Walk-on specification  
Special colours  
Solar control and obscure finishes  
Extended size range  
Wall abutment  
Ridge applications

---

[Top](#) ☐

### Specifications

Max Width without intermediate frame support	1500mm
Max Length in single pane	3500mm
Max Length with multiple panes	unlimited



Max Module Length for continuous glazing	3950mm
Minimum Size	400mm
Butt joint width on multiple units	10mm
Guide Weight (daylight spec only)	40kg / sq m
Guide Weight (Walk-On spec - subject to size)	75kg/sq m
Walk On Glass Specification:	21.5mm toughened laminated outer - 16mm cavity - 6mm low E inner

### **FLUSHGLAZE ROOFLIGHT**

Drawing reference(s):	S0001, [402/ASS/001]
Manufacturer and reference:	Glazing Vision Ltd, Barnes Close, Brandon, Suffolk, IP27 0NY
Type	Flushglaze range
Glazing Details	28mm Double glazed units comprising 6mm clear toughened outer pane, 16mm airspace and 6mm clear toughened low E inner pane. Units to have silicone edge seal.
Frame	Extruded aluminium cill profile, grade 6063 T6
Finish	Polyester Powder Coated.
Colour	White RAL9010 matt or RAL7015 matt as standard.
Kerb	75mm wide up-stand to all sides as manufacturers recommendation. Minimum 3 degrees fall.
Other requirements	Frameless design with glass to glass joints. External glazing surfaces to be flush with no flashings or water ponding obstructions/dirt traps on the glass surface

[Top](#) ☐

### **Installation**

Installation onto prepared roof apertures and up-stands is simple, each rooflight is supplied assembled, packaged with instructions and fitting kit. Either follow our detailed assembly instructions, or opt for an installation service by one of our regional fitting teams. All standard sizes are





factory pre-assembled and delivered in one completed unit, units over 4m length supplied in sections for on site assembly and sealing of the joint line. An on site lifting facility will be required to locate the heavier units to the roof location. Walk-On specification glass roofs invariably require lifting assistance.

---

[Top](#) ☐

## Price and Delivery Guide

Standard sizes are the most cost effective solutions for quality fixed daylight solutions (please refer to our Online Quote Generator for examples). As a rough guide non-standard sizes can add over 15% to the cost, special colours £250 per rooflight. For applications where the rooflight abuts a wall an increase of over 20% can be expected. Prices by email application or through our Online Quote Generator. Typical delivery and installation within London and the home counties would add approximately For large areas of ribbon glazing a figure of £300 per sq m is a reasonable budgeting figure for supply and install.

Delivery times for standard sizes are typically ex-stock, bespoke sizes/colours 4/6 weeks subject to circumstances. Prices are guide only, trade and quantity discounts apply, please submit your enquiry for a firm fixed price.

Please remember when requesting a quote specify the outside dimensions of the opening/kerb, you should then make an allowance of approximately 170mm for inside dimensions subject to chosen internal finishes dimension.

---

[Top](#) ☐

## Resources



[Product Brochure](#)



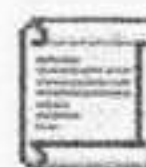
[CAD Drawings](#)

[For [registered](#) users only]



[Get a quote](#)

With our online quote generator



[National Building Specifications \(NBS\)](#)

[MS Word Format](#)

[Plain text format](#)

---