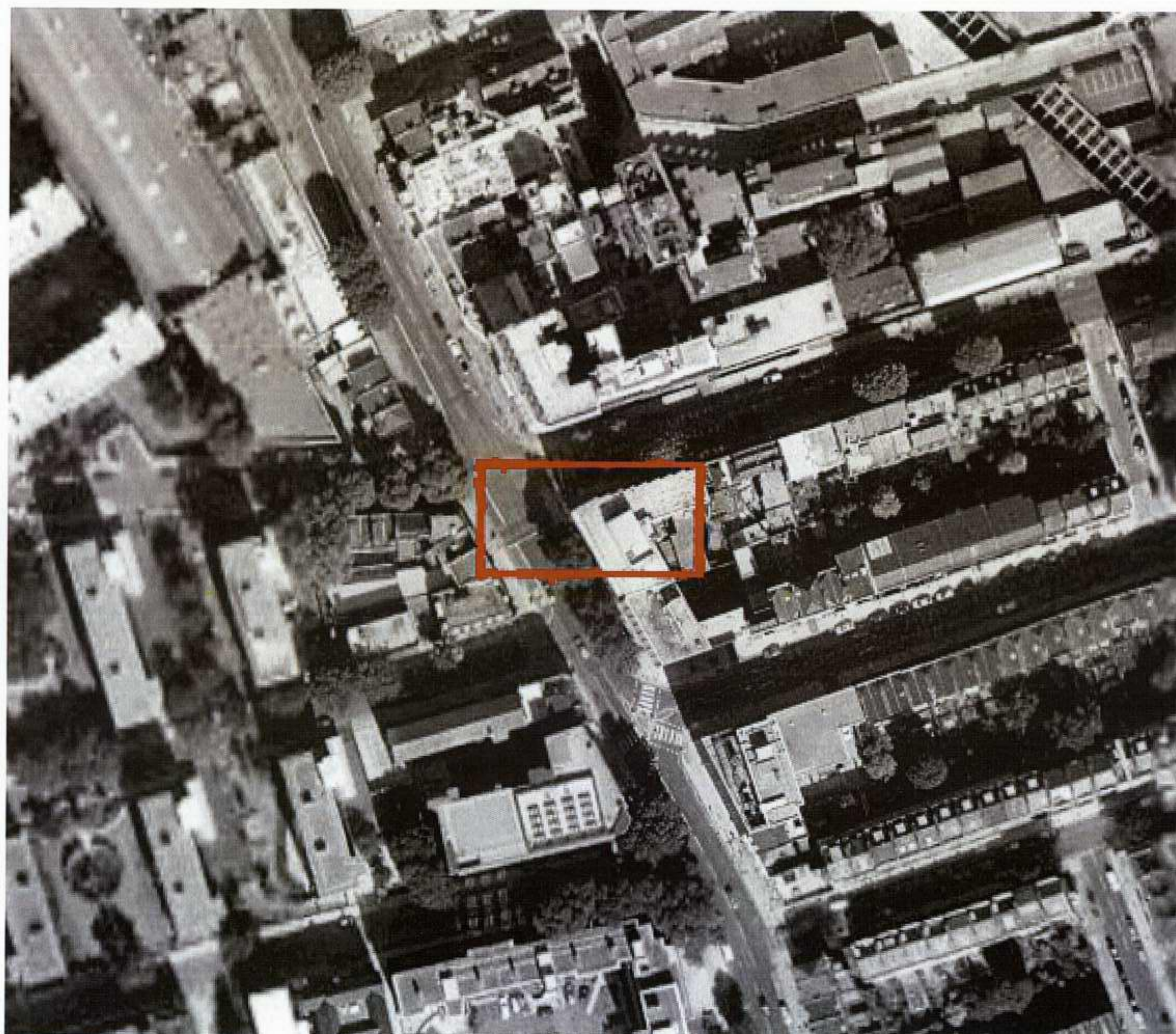


1.0 Location & Site Context



Introduction

Acorn House is a restaurant currently under development at the southeast corner of Gray's Inn Road and Swinton Street. On June 2nd, 2006, the borough granted full planning consent to the project (application number 2006/0856/P) allowing for full internal development within the project site. Since that date, we have been working to design and realise the project with our clients. As part of the design, we have had to re-examine the current shop front. One of the conditions of the granted planning consent was the submittal of an additional application for any work relating to the new shop front. The following drawings present our efforts to bring the current shop-front in line with current building regulations while visually and functionally enhancing the existing frontage in anticipation of the new restaurant.

Description of Works

Access to Acorn House will be afforded through a main entryway at the corner of Gray's Inn Road and Swinton Street. Given the existing conditions of the site, an additional entry step is required to ensure safe access for restaurant patrons. As the perimeter of the building is setback slightly from the property line, the site affords space for the addition of a simple step without impeding on the pedestrian's right of way on the adjacent pavements.

We propose the addition of a simple stone slab and planting bed at the base of this doorway. Vegetation will provide a visual cue for passers-by while further reinforcing the ethos of the restaurant. Above the step, we plan to replace the tired doors and windows of the current frontage with new glazing framed by simple aluminium mullions. Within the space, we plan to add a simple boxed aluminium housing for a discreet lamp to safely light the entry area and Acorn House signage at night. A small series of letters spelling "Acorn House" will be mounted on right hand side of the existing mosaic frame.