

# Embassy Signs Limited

83 BELLENDEN ROAD  
PECKHAM  
LONDON SE15 4QJ

Telephone: 020 7732 1055  
Facsimile 020 7732 4163

www.embassysigns.co.uk

email@embassysigns.co.uk

MWA/PNM  
8 September 2006

Marilet Swanepoel  
Planning Officer  
London Borough of Camden  
Planning Division  
Town Hall  
Argyle Street Entrance  
London WC1H 8ND

11 SEP 2006

Dear Ms Swanepoel,

Further to your email & telephone call please find enclosed revised drawings taking into account the amendments required in your email of 1 September 2006.

We confirm that we have made all the necessary changes to enable you to reach a decision on the planning application submitted

Yours sincerely,



M. W. Avery  
Director

2006/3062/L



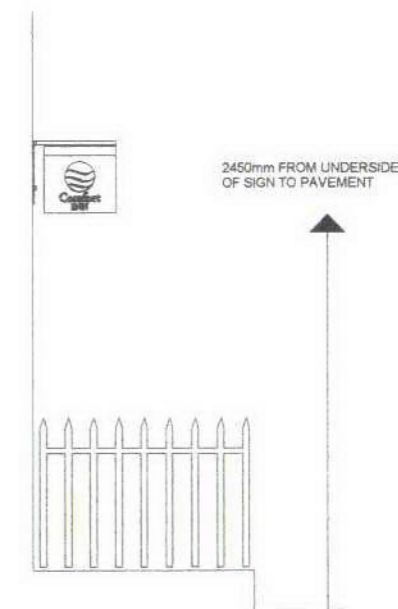
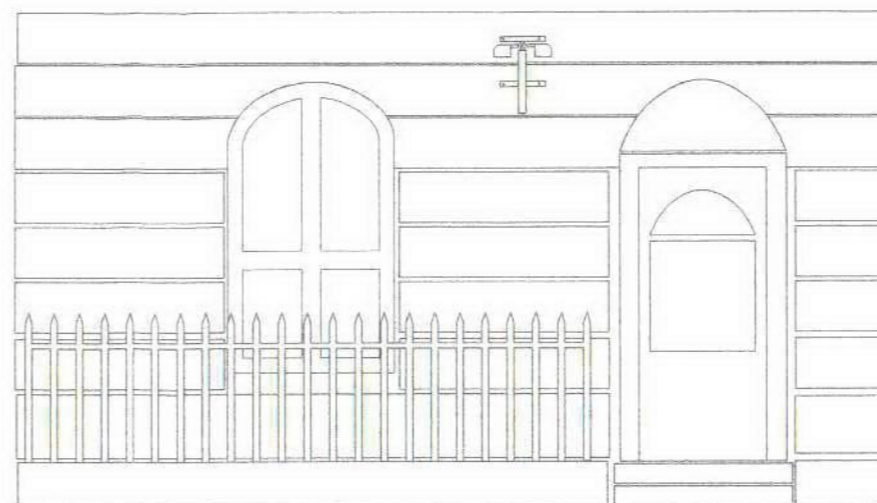
EXISTING SIGN 1200mm x 1000mm



NEW SIGN 600mm x 400mm (725 projection)



SCALE 1:1250

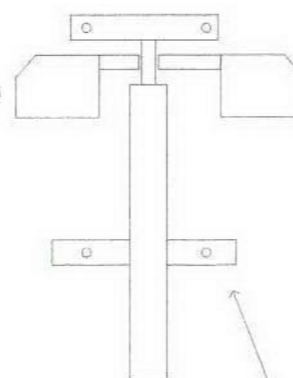


# OVERHEAD TROUGH LIGHTING



400 mm

600 mm



50 mm

STEEL FIXING BRACKET  
FIXED TO WALL WITH  
M10 EXPANDING RAWLBOLTS

SIGN BOARD CONSTRUCTED FROM  
EXTERIOR MDF WITH HARDWOOD TIMBER FRAME  
OVERALL SIZE  
600 x 400mm x 50mm, FACE DECORATED  
IN CORPORATE COLOURS.  
SIGN ILLUMINATED BY OVERHEAD  
LIGHT TROUGHS.  
FIXED TO BUILDING WITH EXPANDING RAWLBOLTS  
ON MILD STEEL  
BRACKETS STOVE ENAMELLED BLACK

STEEL FIXING BRACKET  
FIXED TO WALL WITH  
M10 EXPANDING RAWLBOLTS

2006/ 30 6 2/ L

Client	COMFORT INN
Title	2-6 ST CHAD'S ST WC1H 8BD
Date	3rd July 2006 rev 080906
Scale	1:10/1:50
Drn by	mwa

**Embassy Signs Limited**  
83 Bellenden Road  
Peckham London  
SE15 4QJ  
0207 732 1055  
Fax 0207 732 4163  
www.embassysigns.co.uk

