

Saxon

CONCRETE TEXTURED PAVING

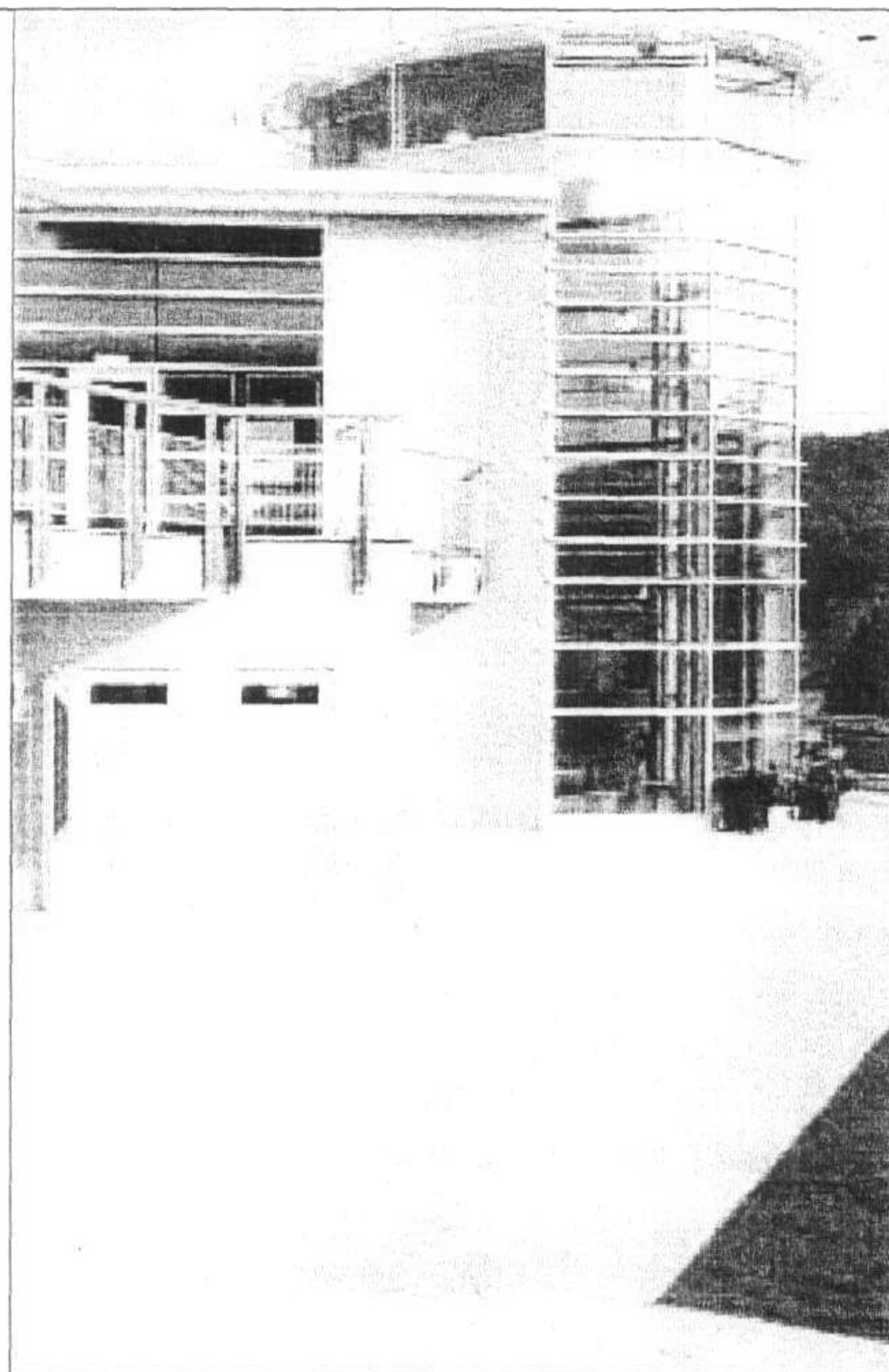
The UK's number one textured paving, extensively used, again and again, with outstanding and proven durability and performance.

The use of hard Yorkstone aggregates and controlled texturing processes give Saxon paving a unique, coarse and consistent surface finish with excellent durability and non-slip properties.

The coarse texture of Saxon paving gives a 'softer' appearance that makes it ideal for use in both contemporary and traditional paving schemes or surroundings.

Saxon paving is available in five colours, Natural, Buff, Red, Marigold and Charcoal, in a variety of plan sizes and thicknesses and is supplied with a textured, rounded edge.

The product can also be supplied in Trafica format – suitable for areas subject to heavy vehicular overrun, and with fibre reinforcement for occasional vehicular overrun.



Saxon in conjunction with Cromwell Walling (see page 274), School, Bradford

COLOURS

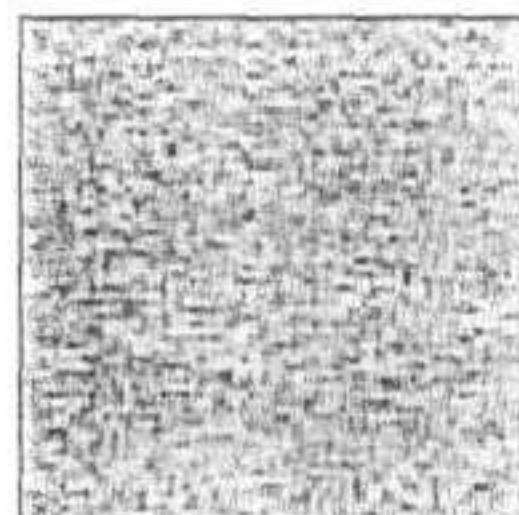
Precise colour and surface texture should be judged from actual materials rather than photographic representations.



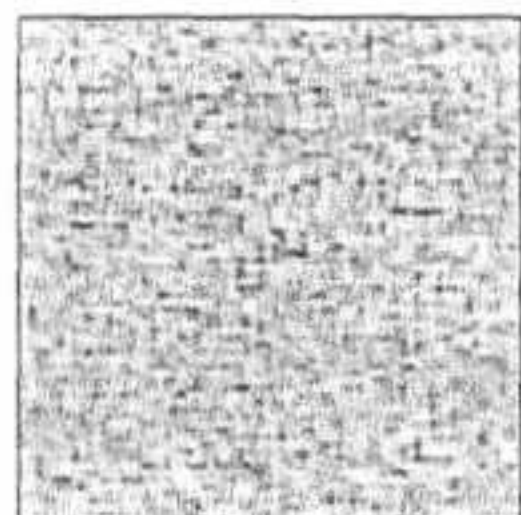
Natural



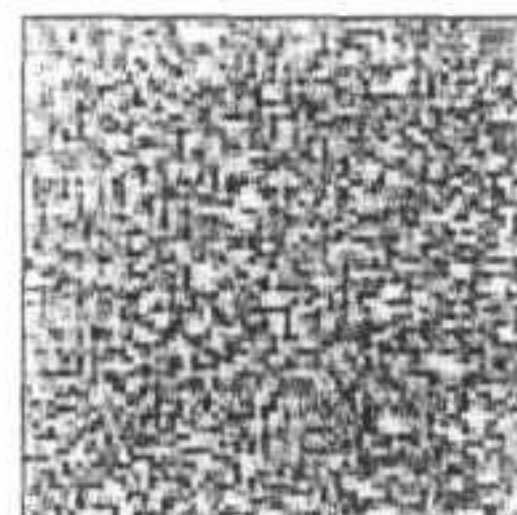
Buff



Red



Marigold



Charcoal

Thickness (mm)	Plan Size (mm)	Edge	BS Size	Weight (kg approx)	Natural (Ref No.)	Buff (Ref No.)	Red (Ref No.)	Marigold (Ref No.)	Charcoal (Ref No.)	Minimum Order Qty (No.)	
50mm	400 x 400	Rounded	F50	18.2	FL5060500	FL5061000					
	450 x 450	Rounded	E50	22.9	FL5030500	FL5031000	FL5031500	FL5032000	FL5032500	3000	
	450 x 600	Rounded	A50	30.6	FL4900500	FL4911000				3000	
	600 x 600	Rounded	B50	43.6	FL4950600	FL4951100	FL4951600	FL4952000	FL4952500		
	900 x 600	Rounded	D50	64.6	FL4950500	FL4951000					
60mm	300 x 300	Rounded	G60	12.8	FL5100500	FL5100520				6000	
63mm	450 x 600	Rounded	A63	39.6	FL5130650	FL5131150					
	600 x 600	Rounded	B63	53.4	FL5130600	FL5131100	FL5131600	FL5132100	FL5132500	2000	
	900 x 600	Rounded	D63	77.6	FL5130500	FL5131000					
Trafica	65mm	400 x 400	Rounded	F65	24.7	FL5160500	FL5161000	FL5161500	FL5162000	FL5162500	3000
Trafica	70mm	450 x 450	Rounded	E70	31.7	FL5180500	FL5181000	FL5181500	FL5182000	FL5182500	3000
Trafica	100mm	450 x 450	Rounded	E100	45.9	FL5200500	FL5201000				3000

Saxon with reference numbers indicated in bold black are available ex stock

Saxon with reference numbers indicated in green are manufactured to order, minimum quantity indicated in right hand column



INFORMATION

www.marshalls.co.uk/paving

Sales Office: 0845 3020600

Technical Advisory Service: 08704 113344

RECEIVED
- 2 NOV 2006