

Landscaping

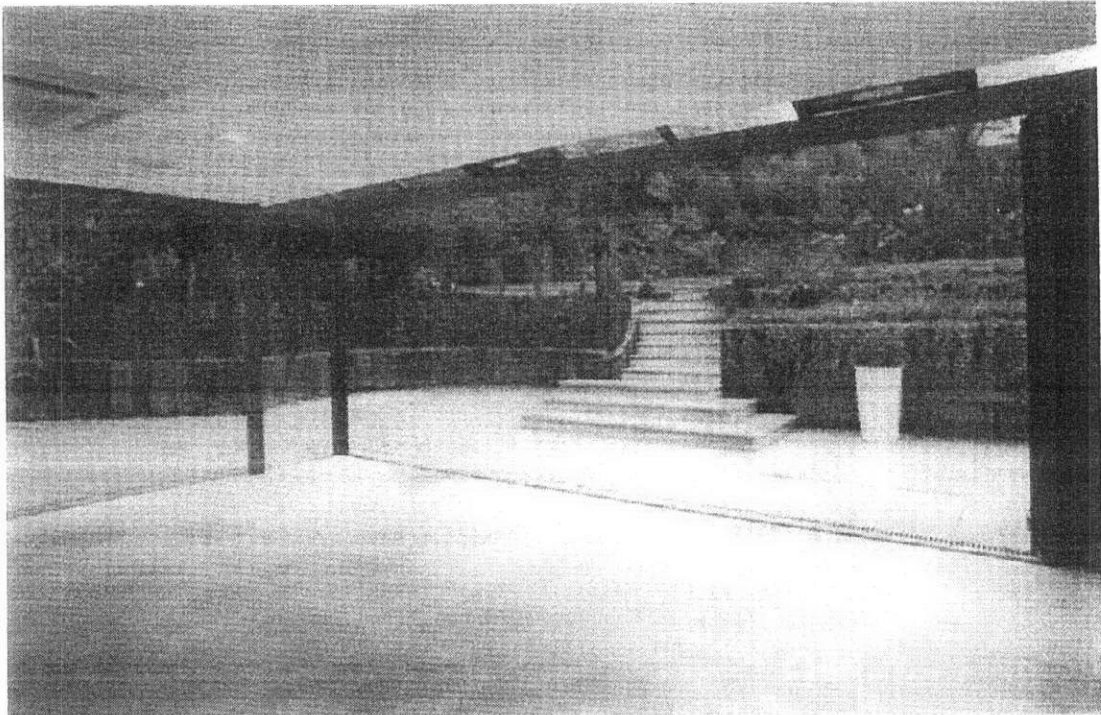
A comprehensive landscaping design is proposed which will incorporate the following:

- Landscaping of front garden incorporating Silver Birch trees, new Flowering Cherry tree, and extensive range of new shrubs.
- New Copper Beech hedge for complete length of boundary with the road and where appropriate with the boundary of number 14 and 16.

Protection, preservation and enhancement of existing trees, bushes and shrubs in rear garden.

Hard landscaping will mainly be at the lower ground rear terrace area.

Rainwater falling on external hard landscaping will drain to a water management receptacle and released back into the ground in the immediate area.



The garden will be treated similarly to above image – showing view from the internal basement.

CONCLUSION

The proposed development which is the subject of the full planning application is a high quality replacement dwelling which will positively contribute to the conservation area.

Richard Webb

WEBB ARCHITECTS LIMITED

31.10.06