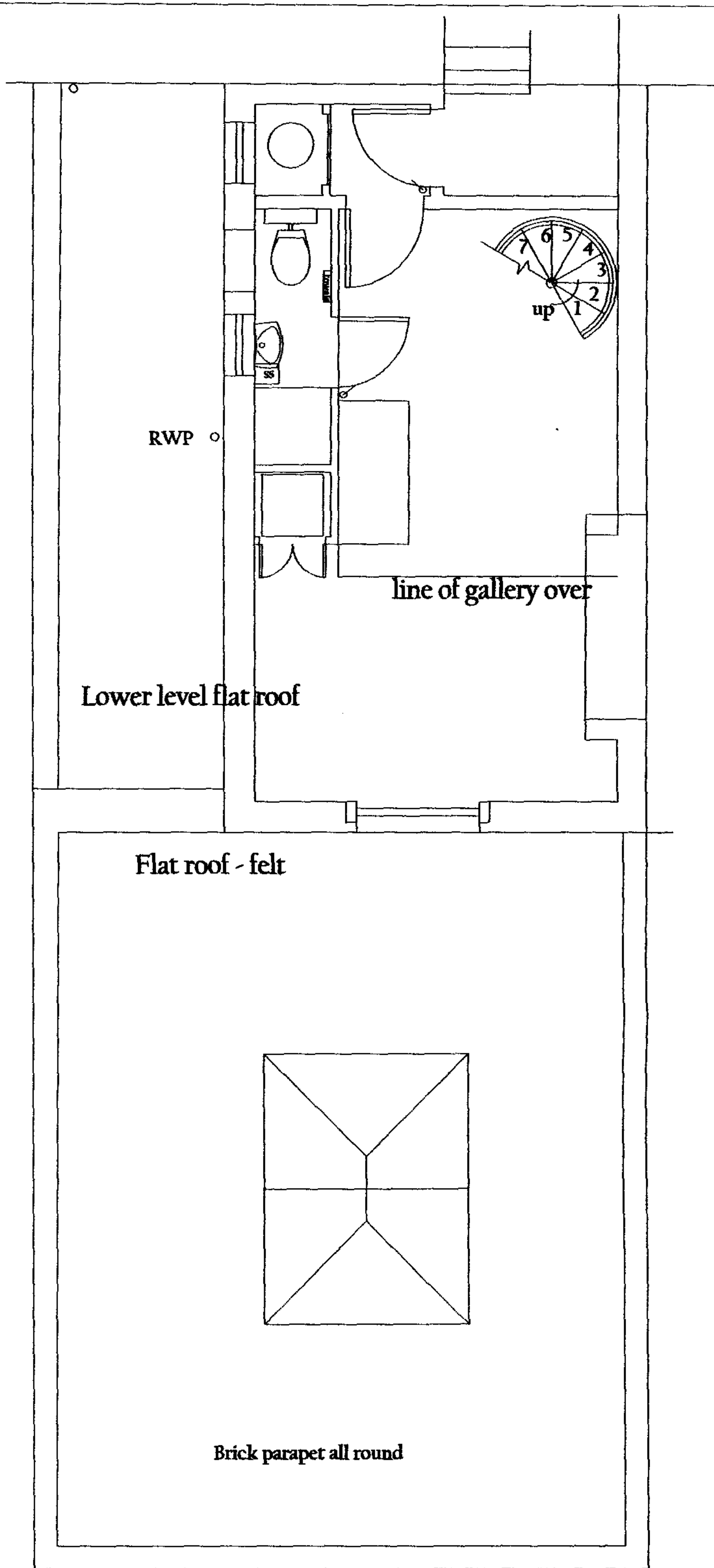


GROUND FLOOR



FIRST FLOOR

64 Cricklewood Broadway

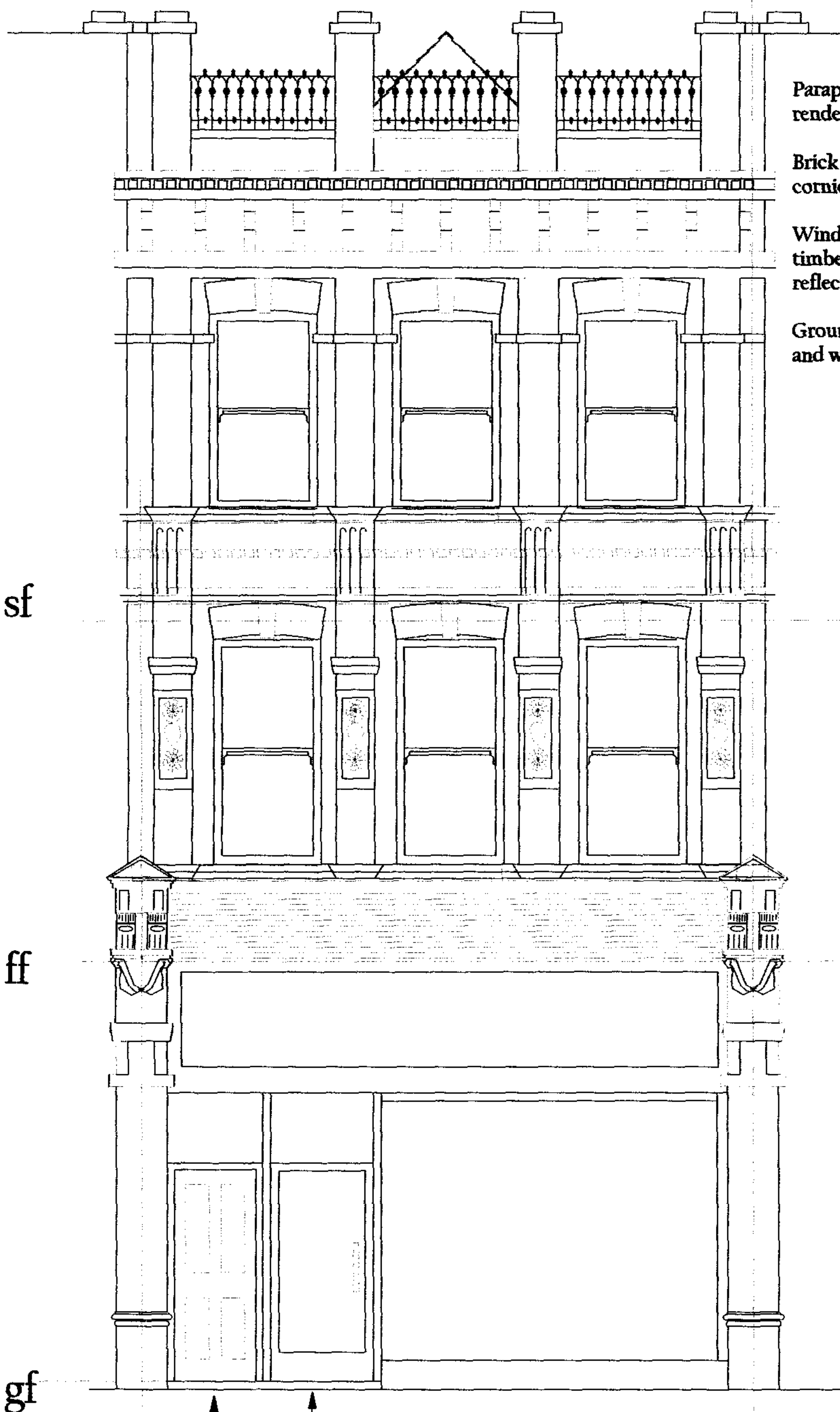
Proposed conversion of Ground Floor
Rear Office Storage area to form self
contained flat

Ground floor & First Floor Plans Existing

Scale 1:50

Drawing Number H06CB/01

April 2006



Parapet with iron ornamental railings and with painted rendered/stone copings and cappings to intermediate piers.

Brick elevation with painted rendered/stone cornices, key stones, etc.

Windows to First & Second floors - sliding sash timber windows glazed with clear glass fitted with reflective solar film.

Ground floor shop front - clear glazed in aluminium framing and with painted rendered stall riser.

sf

ff

gf

Entrance to ground floor of proposed rear flat and to first and second floor flats.

Entrance to ground floor offices

64 Cricklewood Broadway

Proposed conversion of Ground Floor
Rear Office Storage area to form self
contained flat

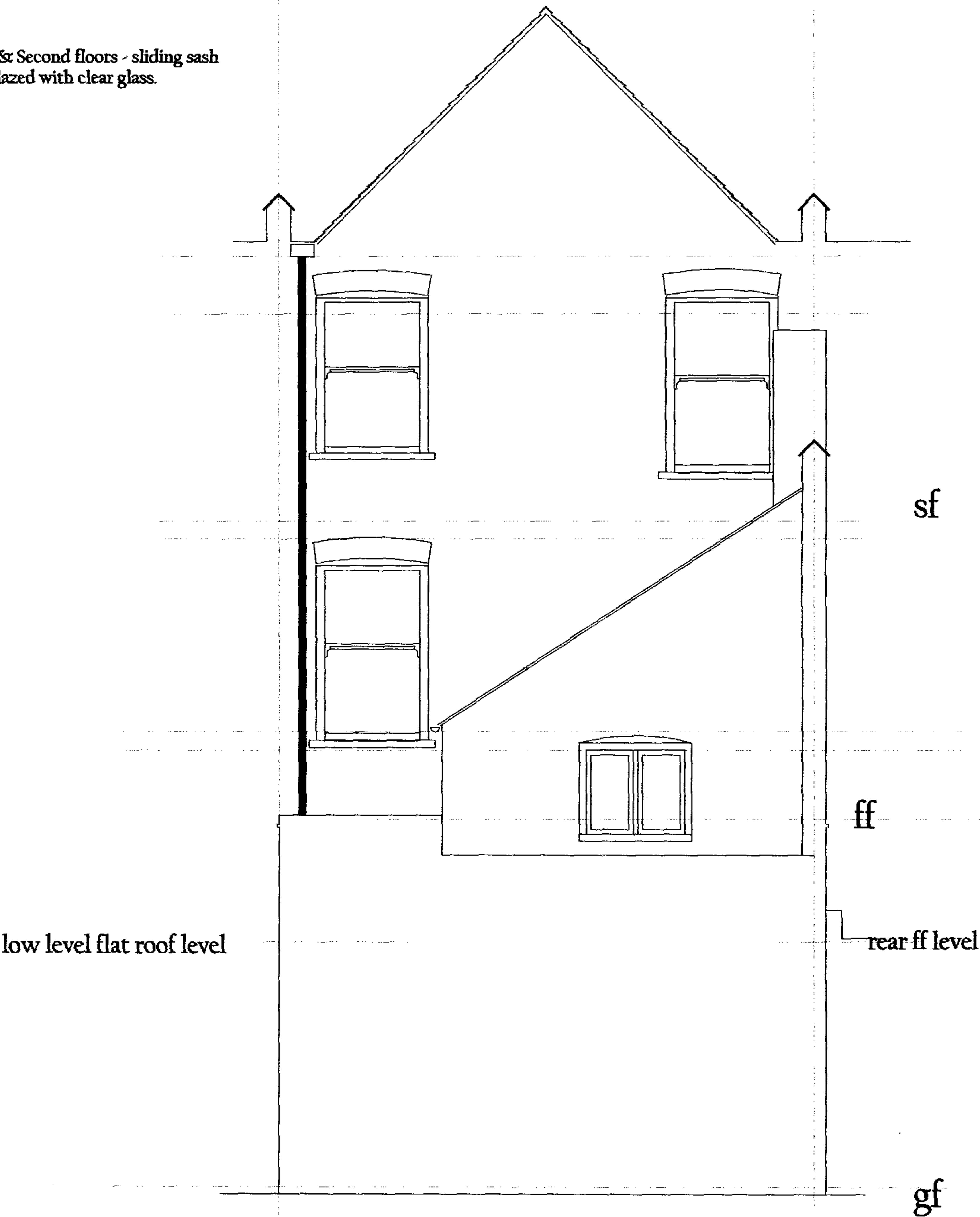
Front Elevation as Existing & Proposed

Scale 1:50
Drawing Number 1106CB/02

February 2006

Brick elevation

Windows to First & Second floors - sliding sash
timber windows glazed with clear glass.



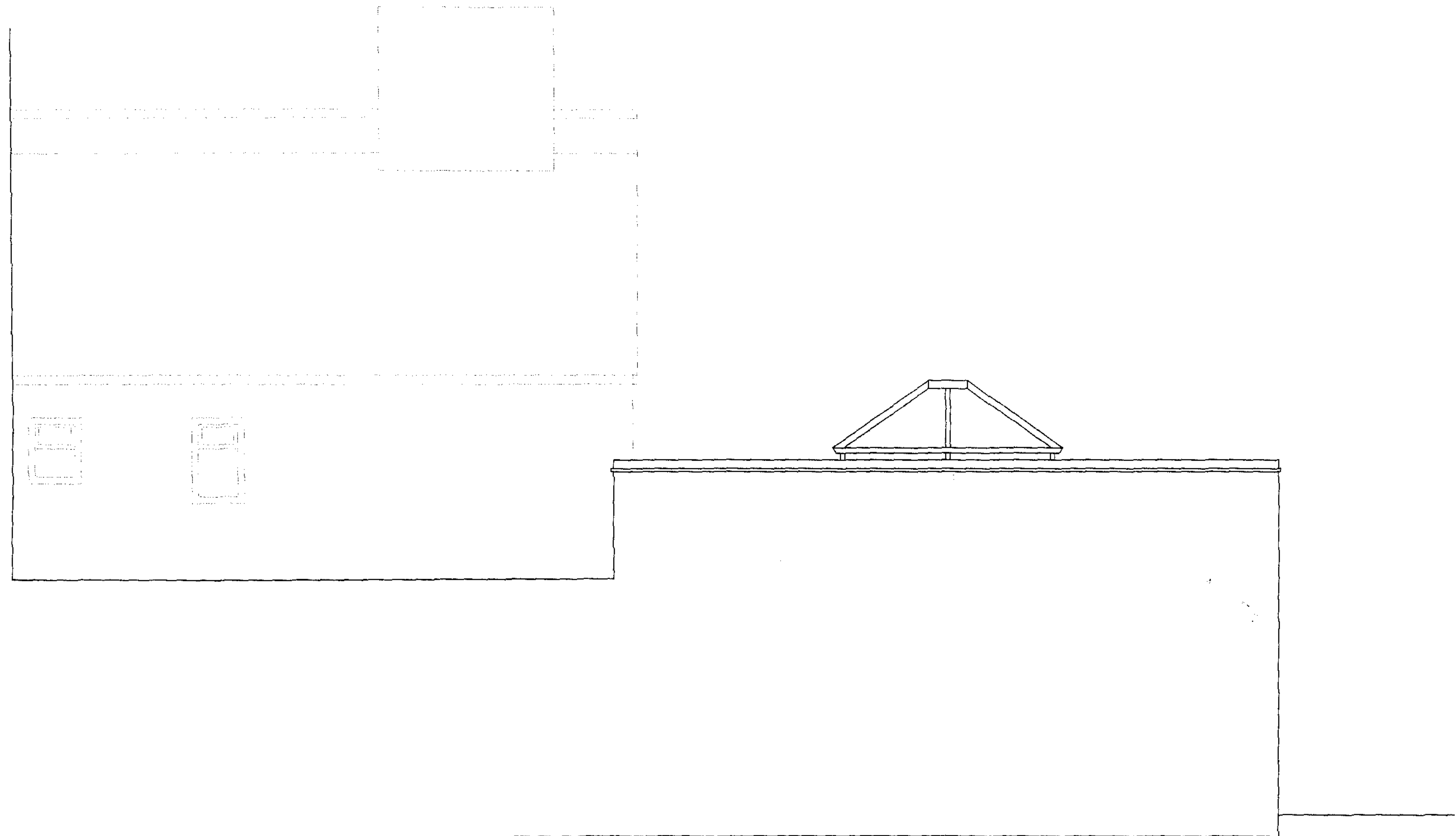
64 Cricklewood Broadway

Proposed conversion of Ground Floor
Rear Office Storage area to form self
contained flat

Elevation of first floor rear flat as Existing

Scale 1:50
Drawing Number 1106CB/03

February 2006



64 Cricklewood Broadway

Proposed conversion of Ground Floor
Rear Office Storage area to form self
contained flat

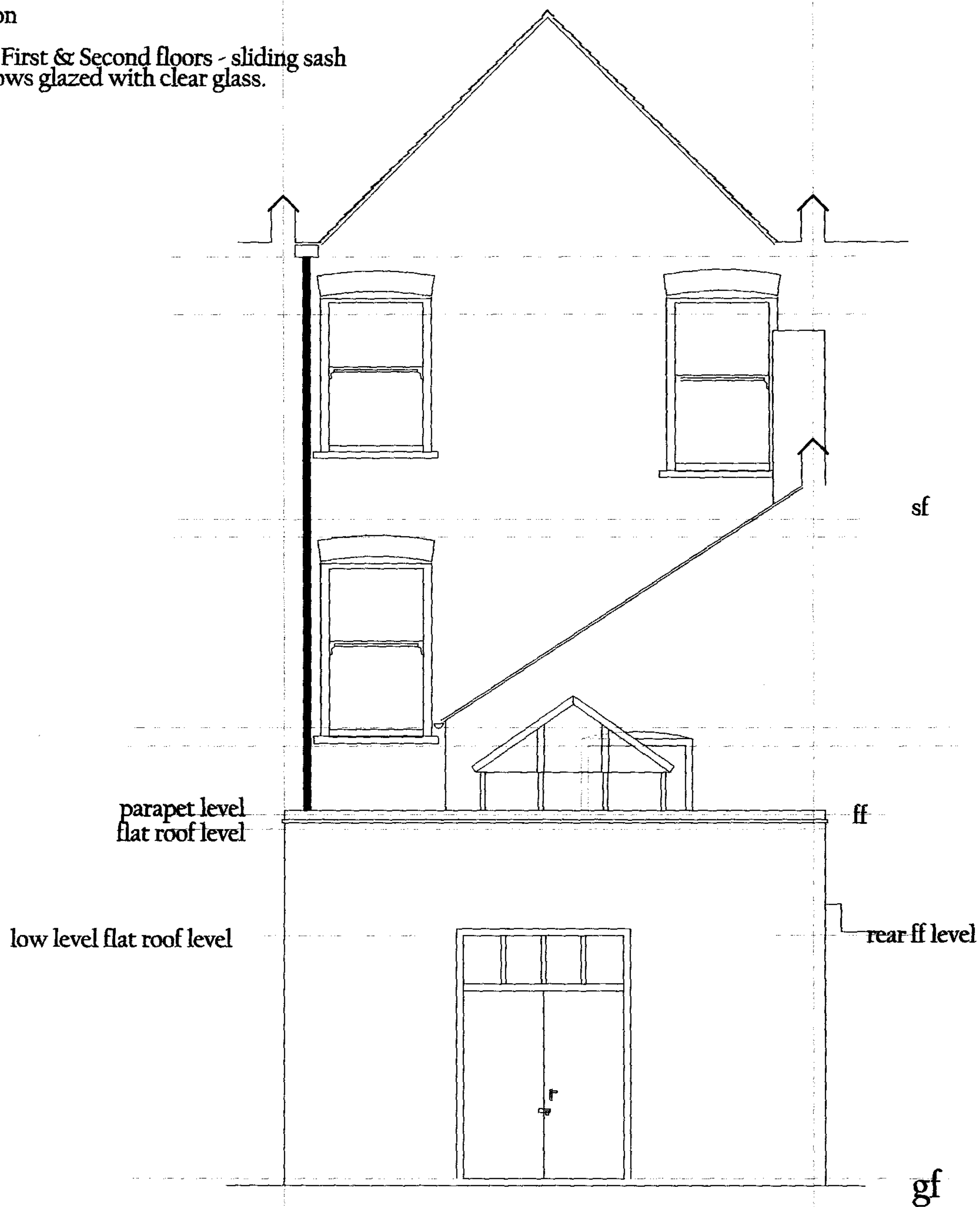
Side elevation EXISTING

Scale 1:50
Drawing Number 1106CB/04

April 2006

Brick elevation

Windows to First & Second floors - sliding sash
timber windows glazed with clear glass.



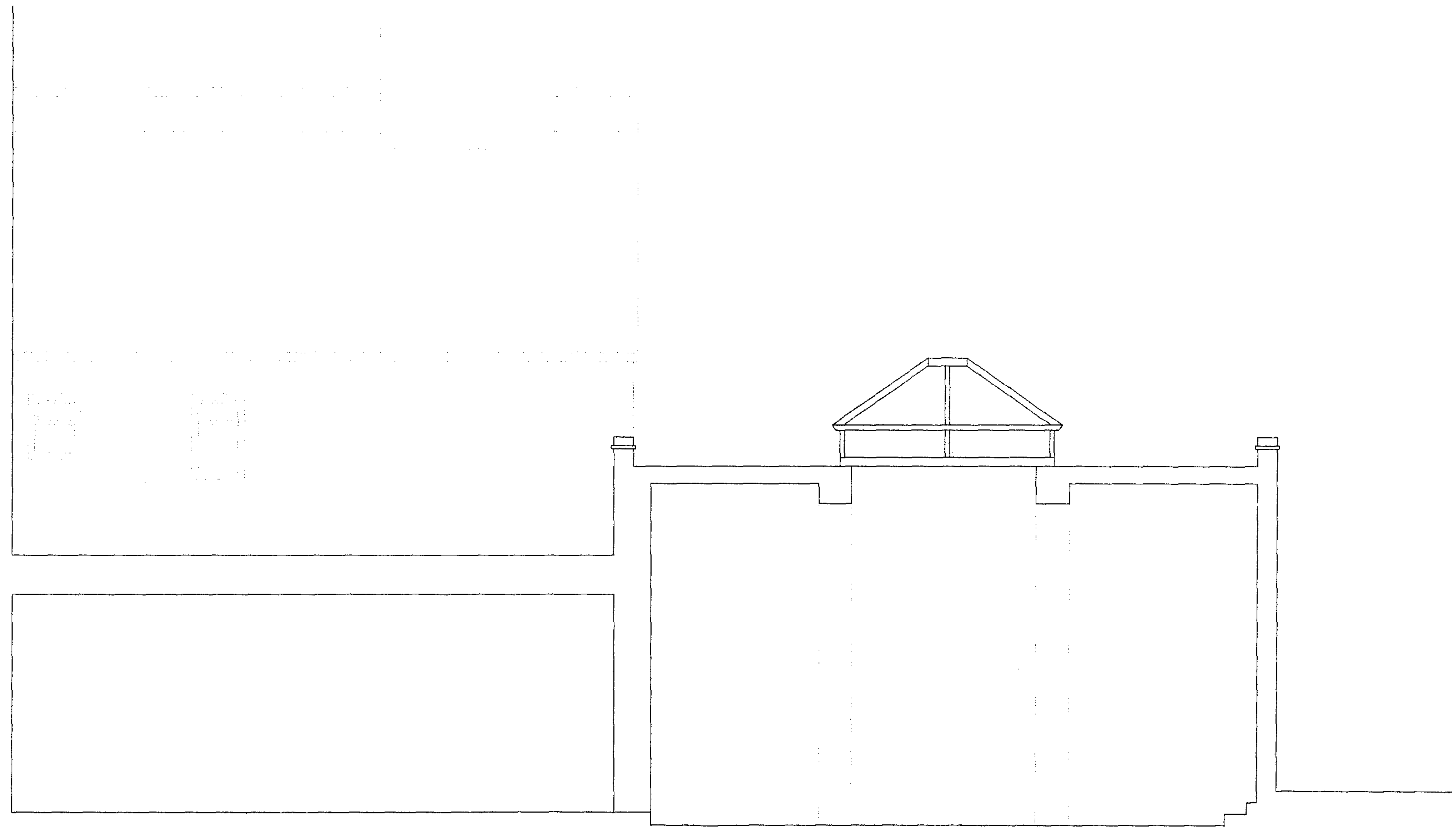
64 Cricklewood Broadway

Proposed conversion of Ground Floor
Rear Office Storage area to form self
contained flat

Rear Elevations as Existing

Scale 1:50
Drawing Number 1106CB/05

February 2006



SECTION A-A

64 Cricklewood Broadway

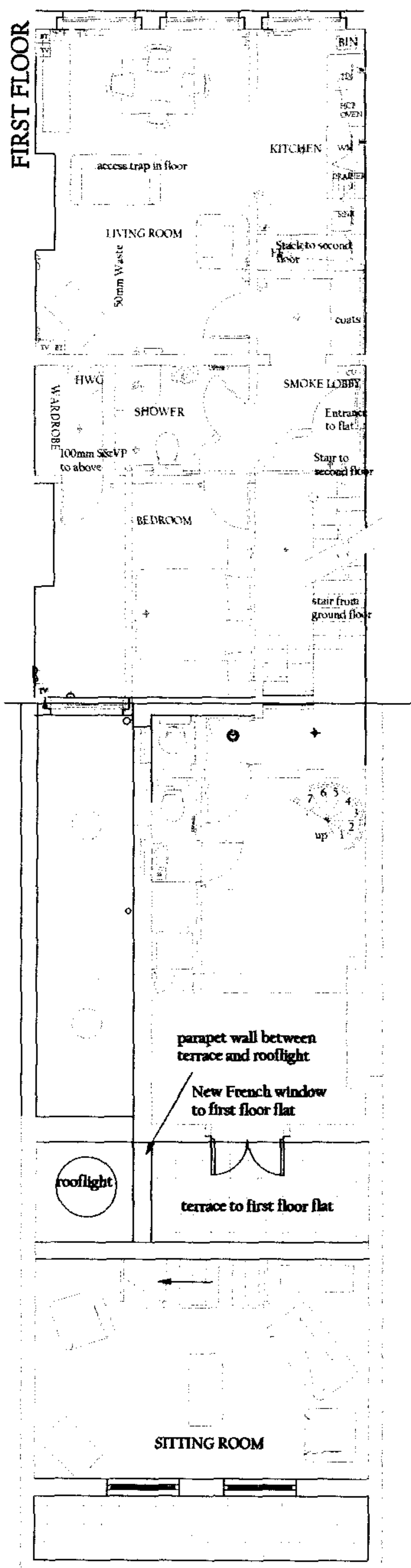
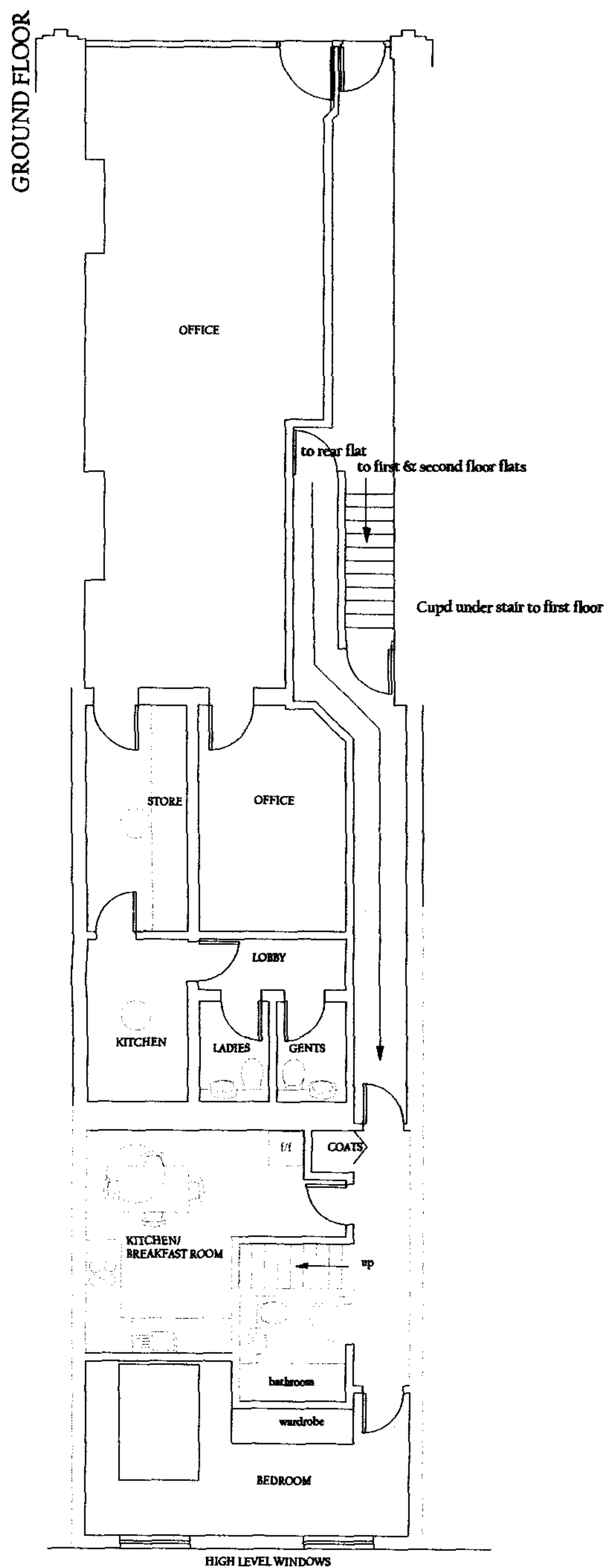
Proposed conversion of Ground Floor
Rear Office Storage area to form self
contained flat

Section A-A EXISTING

Scale 1:50
Drawing Number 1106CB/06

February 2006

CRICKLEWOOD BROADWAY



Total area of Proposed rear flat
excluding the entrance corridor - 59m²

Precise location of windows to rear elevation may be
adjusted to suit windows in building on opposite side of
rear passageway.

64 Cricklewood Broadway

Proposed conversion of Ground Floor
Rear Office Storage area to form self
contained flat

Ground floor & First Floor Plans Proposed

Scale 1:100
Drawing Number 1106CB/07

November 2006

to rear flat
to first & second floor flats

Cupd under stair to first floor

STORE

OFFICE

LOBBY

KITCHEN

LADIES

GENTS

f/f

COATS

KITCHEN/
BREAKFAST ROOM

up

bathroom

wardrobe

BEDROOM

HIGH LEVEL WINDOWS

The extent of the rear flat is outlined in red

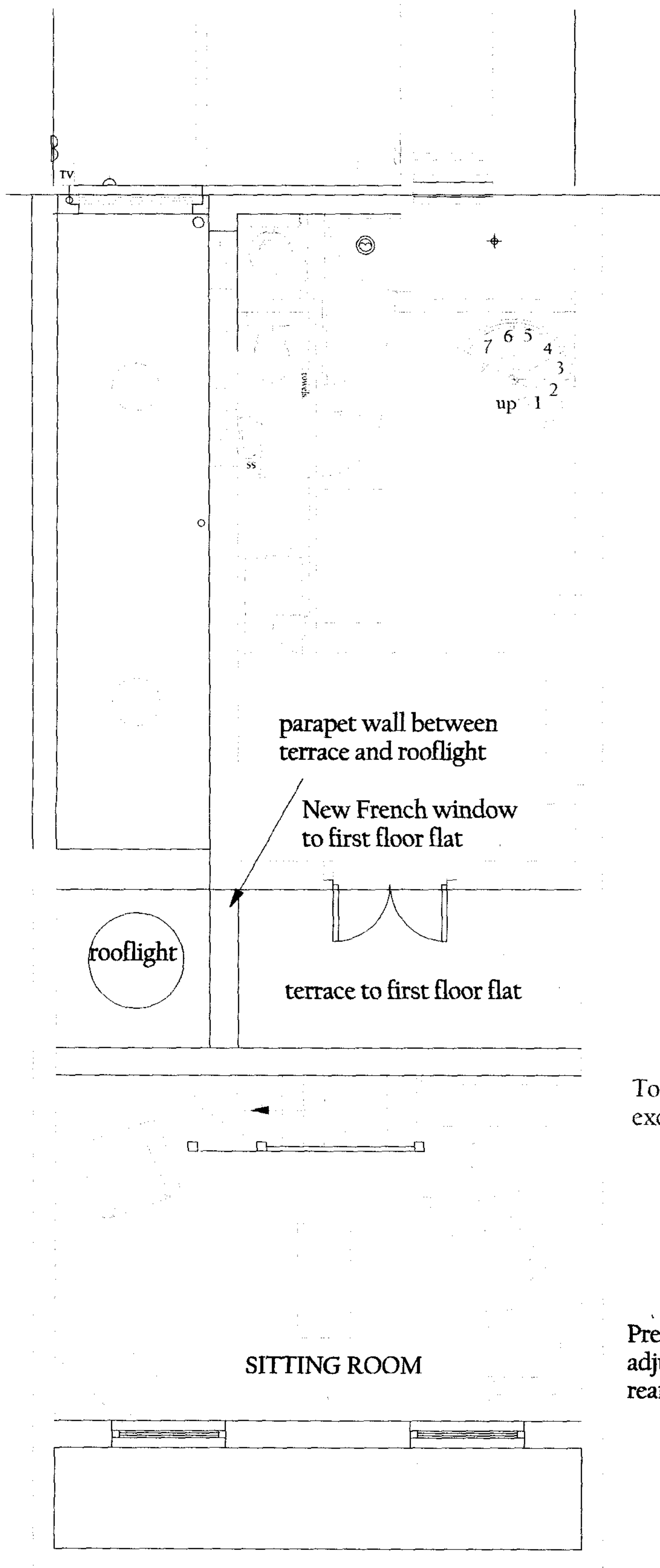
64 Cricklewood Broadway

Proposed conversion of Ground Floor
Rear Office Storage area to form self
contained flat

Ground floor Plans Proposed

Scale 1:50
Drawing Number 1106CB/08

November 2006



Total area of Proposed rear flat
excluding the entrance corridor = 59m²

Precise location of windows to rear elevation may
adjusted to suit widows in building on opposite side
rear passageway.

64 Cricklewood Broadway

Proposed conversion of Ground Floor
Rear Office Storage area to form self
contained flat

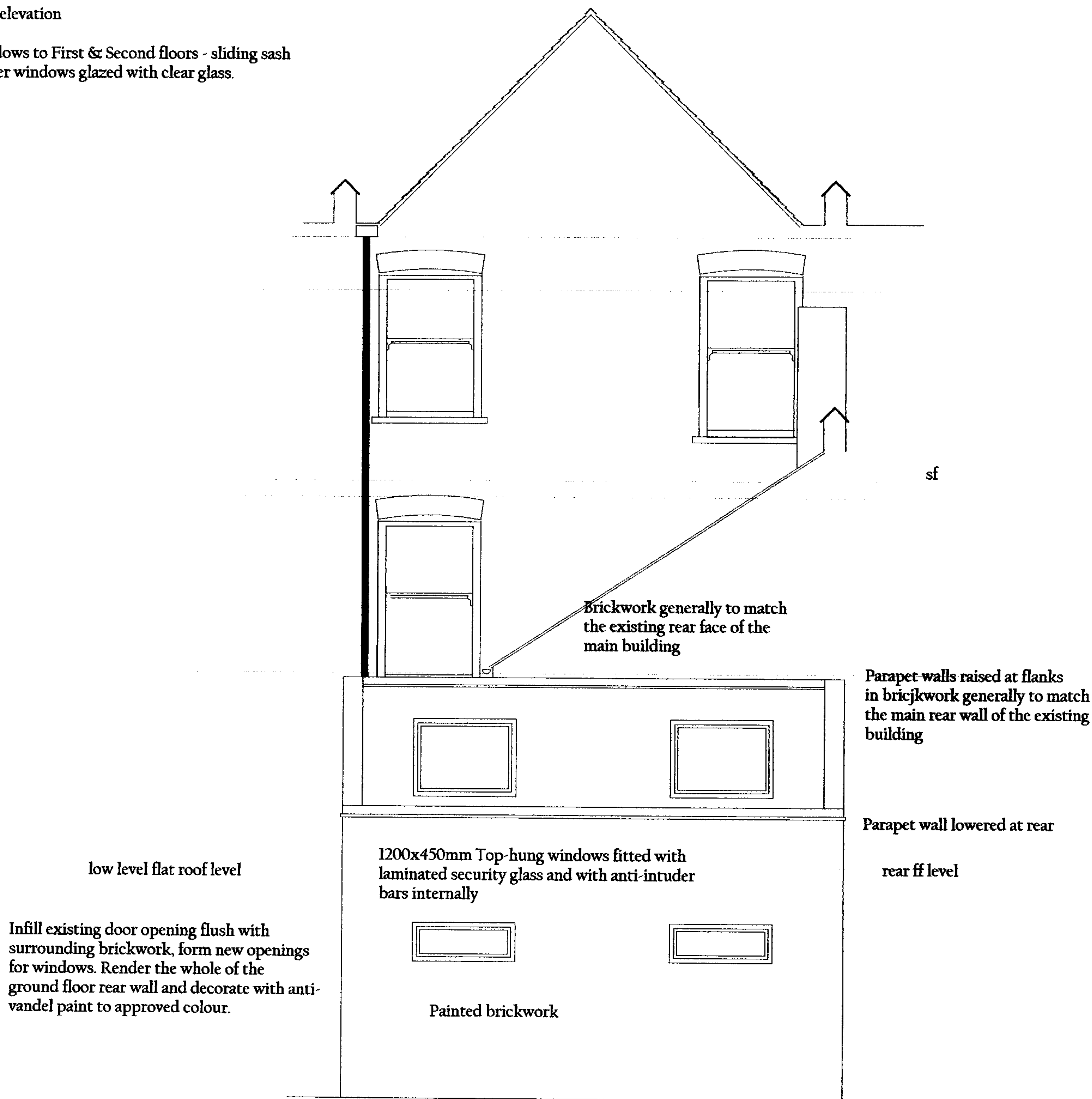
First Floor Plan Proposed

Scale 1:50
Drawing Number II06CB/09

November 2006

Back elevation

Windows to First & Second floors - sliding sash timber windows glazed with clear glass.



64 Cricklewood Broadway

Proposed conversion of Ground Floor
Rear Office Storage area to form self
contained flat

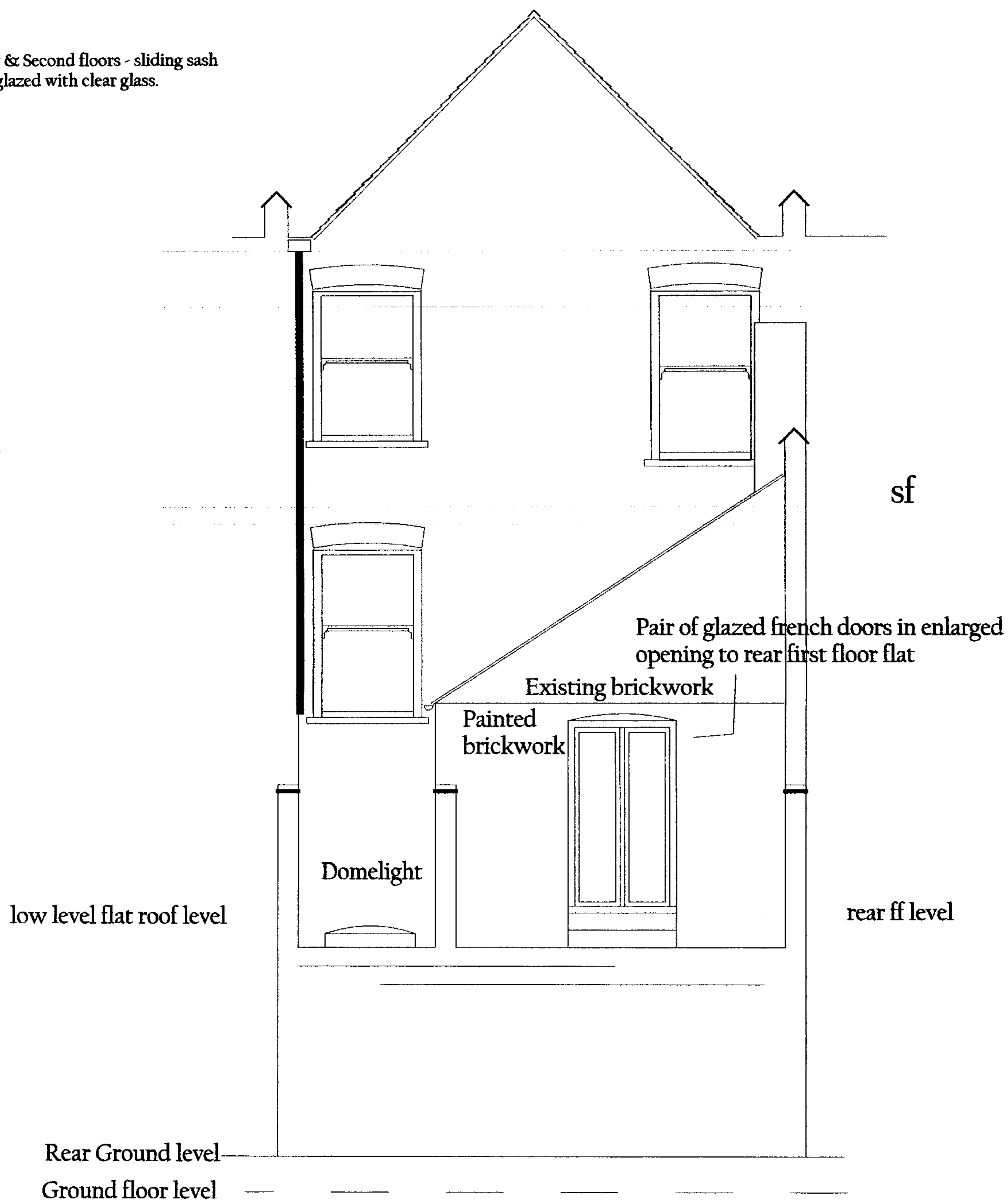
Rear Elevations as Proposed

Scale 1:50
Drawing Number 1106CB/10

February 2006

Brick elevation

Windows to First & Second floors - sliding sash
timber windows glazed with clear glass.

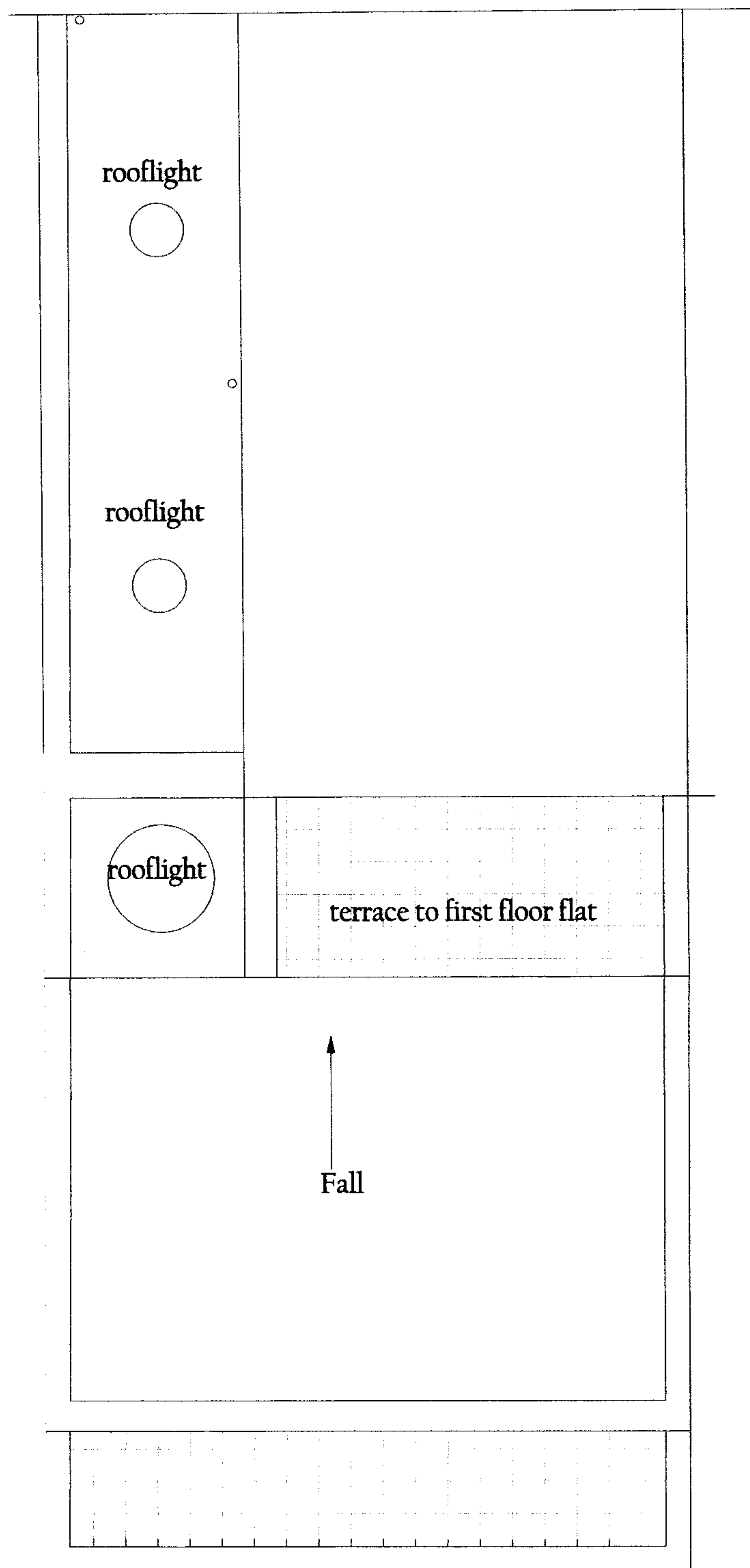


64 Cricklewood Broadway

Proposed conversion of Ground Floor
Rear Office Storage area to form self
contained flat

Elevation of first floor rear flat
as Proposed - B-B
Scale 1:50
Drawing Number 1106CB/11

February 2006



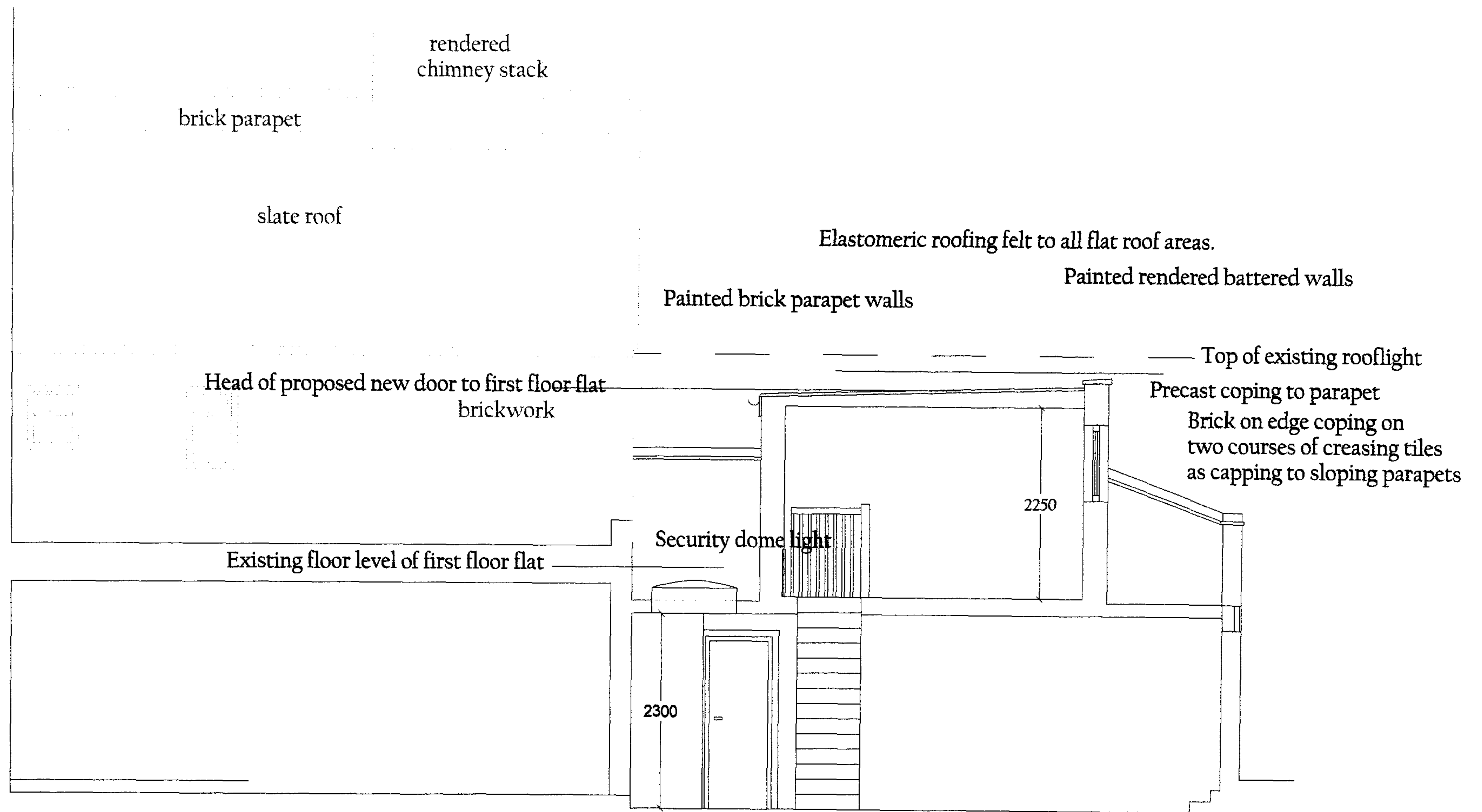
64 Cricklewood Broadway

Proposed conversion of Ground Floor
Rear Office Storage area to form self
contained flat

Roof plans Proposed

Scale 1:50
Drawing Number H06CB/12

February 2006



SECTION A-A

64 Cricklewood Broadway

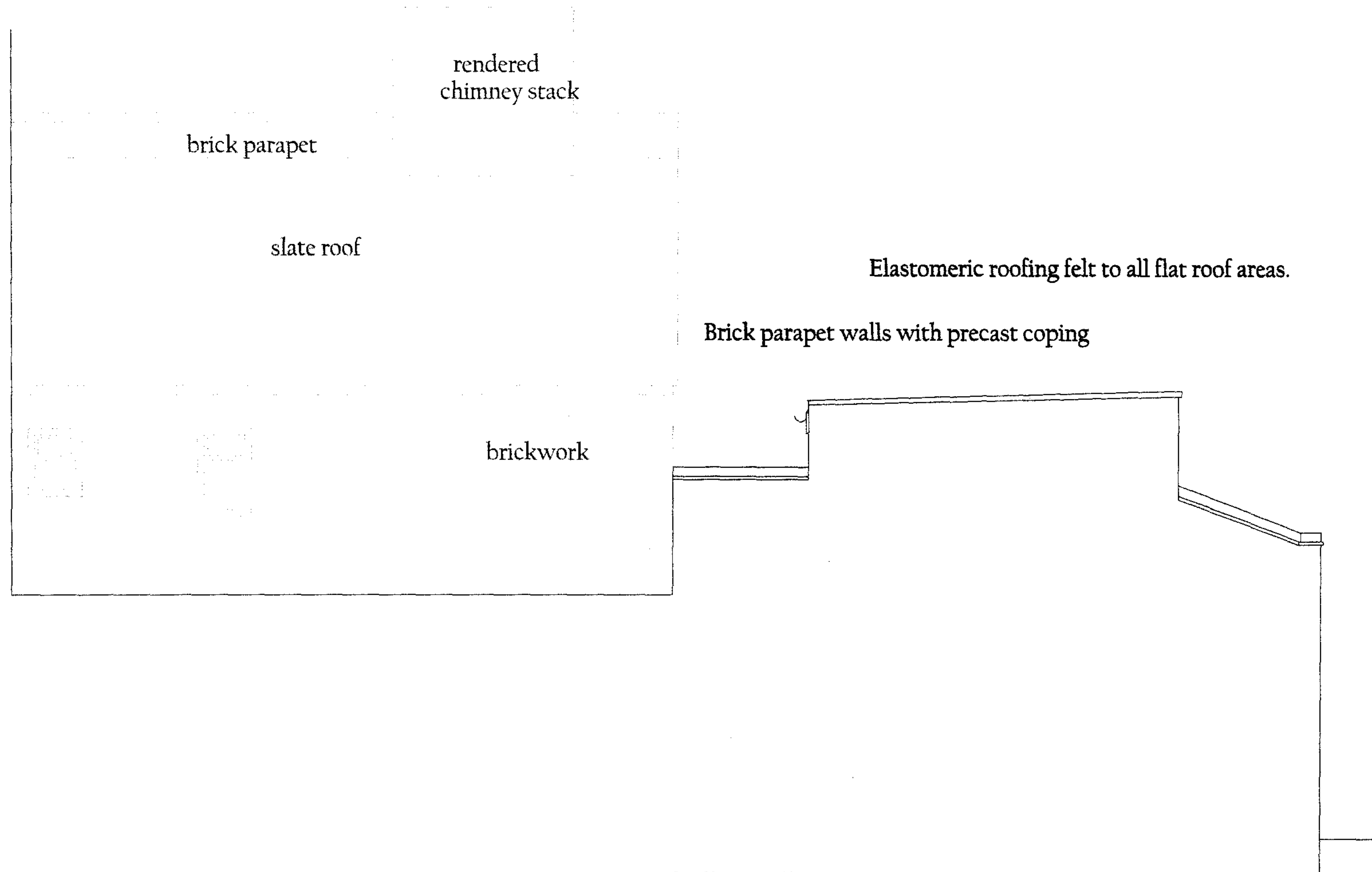
Proposed conversion of Ground Floor
Rear Office Storage area to form self
contained flat

Section A-A PROPOSED

Scale 1:50

Drawing Number 1106CB/13

February 2006



64 Cricklewood Broadway

Proposed conversion of Ground Floor
Rear Office Storage area to form self
contained flat

Side elevation - Proposed
Scale 1:50
Drawing Number 1106CB/14

February 2006