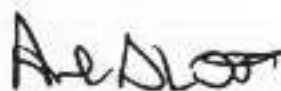


This is the exhibit marked "KVC 7" referred to in the Statutory Declaration of Keith Cole.

A handwritten signature in black ink, appearing to read "Keith Cole". The signature is fluid and cursive, with a large initial 'K' and 'C'.

Before me

A handwritten signature in black ink, appearing to read "A. D. Scott". The signature is in a cursive style.

Solicitor / Commissioner for Oaths



Property Services Since 1888

BRACKNELL GARDENS, HAMPSTEAD, NW3



A tremendous three bedroom, south facing garden flat on the ground floor of this imposing Victorian bay fronted house. The apartment enjoys a large patio with steps leading down to a lawned rear garden. Bracknell Gardens is conveniently located between the multitude of facilities of Hampstead Village, the Finchley Road and the 02 Centre.

- * RECEPTION ROOM * KITCHEN * GUEST CLOAK ROOM *
- * MASTER BEDROOM WITH EN SUITE BATHROOM *
- * BEDROOM 2 WITH EN SUITE BATHROOM *
- * BEDROOM 3 WITH EN SUITE SHOWER ROOM *
- * REAR GARDEN *

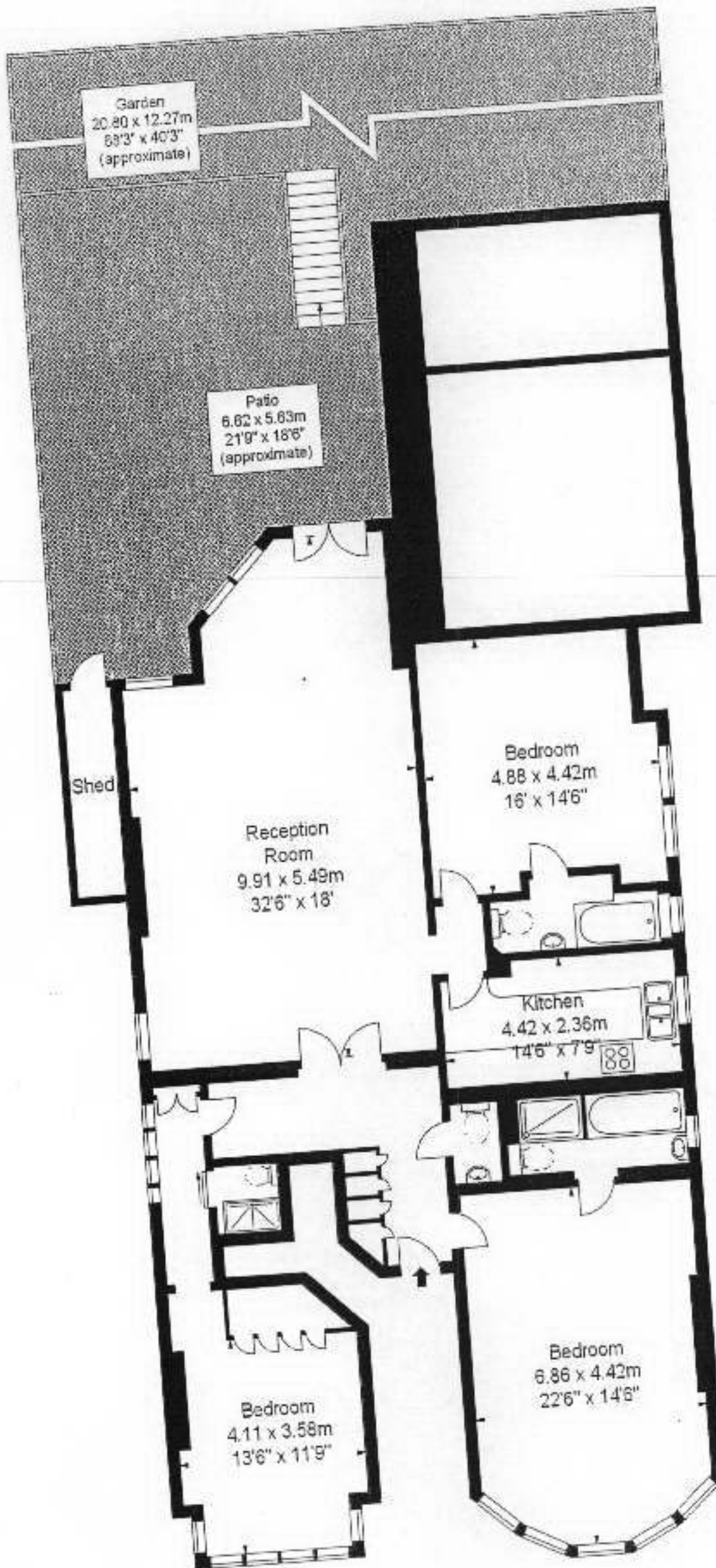
PRICE: £1,100,000 SHARE OF FREEHOLD

SUBJECT TO CONTRACT

REF/01847f



Bracknell Gardens, NW3



Ground Floor

Approx Gross Internal Area

1733 Sq Ft - 161.00 Sq M
(Excluding Storage Area)

For Illustration Purposes Only - Not To Scale
Floor Plan from www.BigPropertyMarketing.com