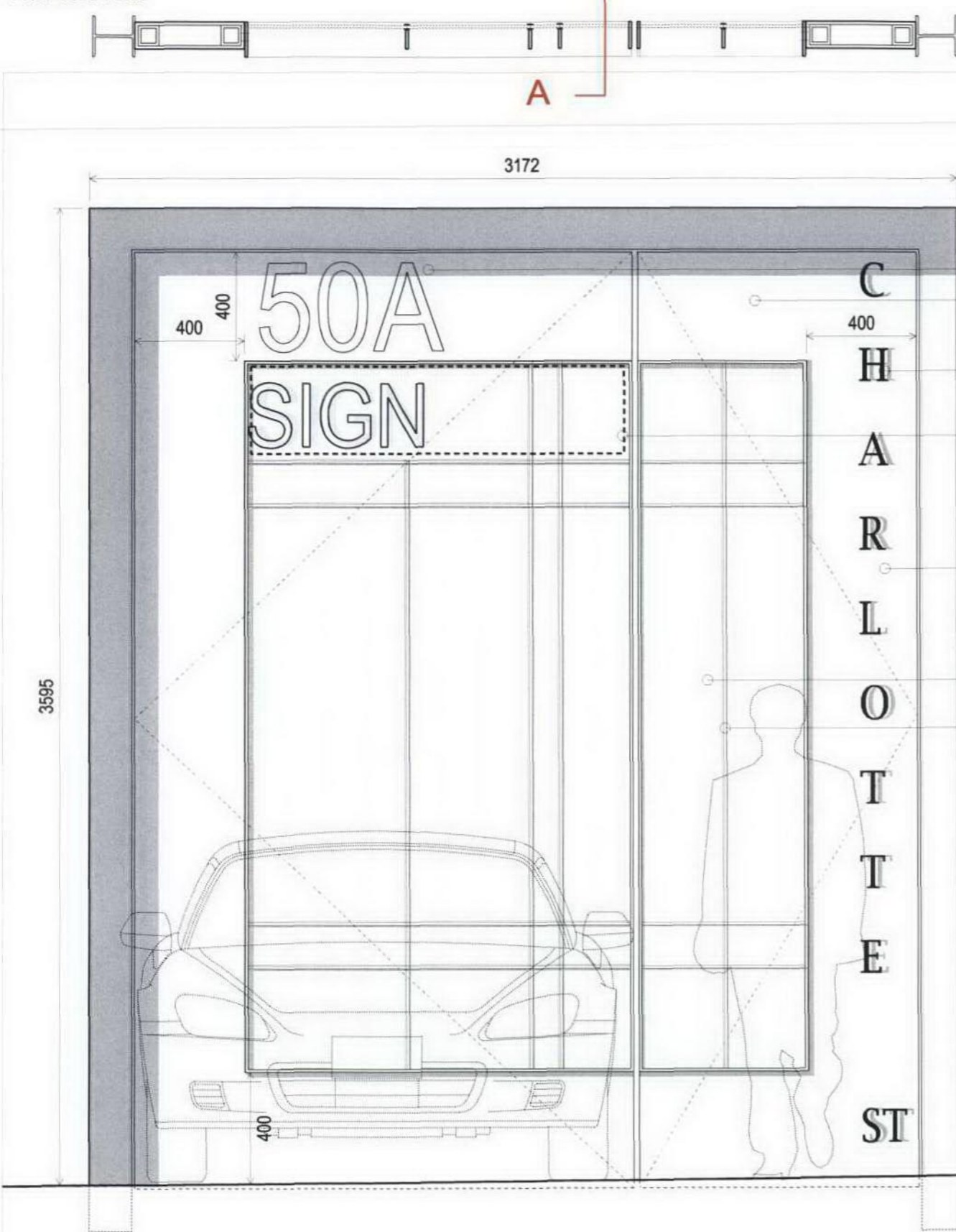


PROPOSED PLAN



PROPOSED CHARLOTTE STREET GATE ELEVATION

LOCATION OF NEW GATE SET BACK FOR WALL MOUNTED ACCESS CONTROLS TO BE LOCATED ON EITHER SIDE OF DOORS

PREVIOUS LOCATION OF GATE

CUT OUT STREET NUMBER

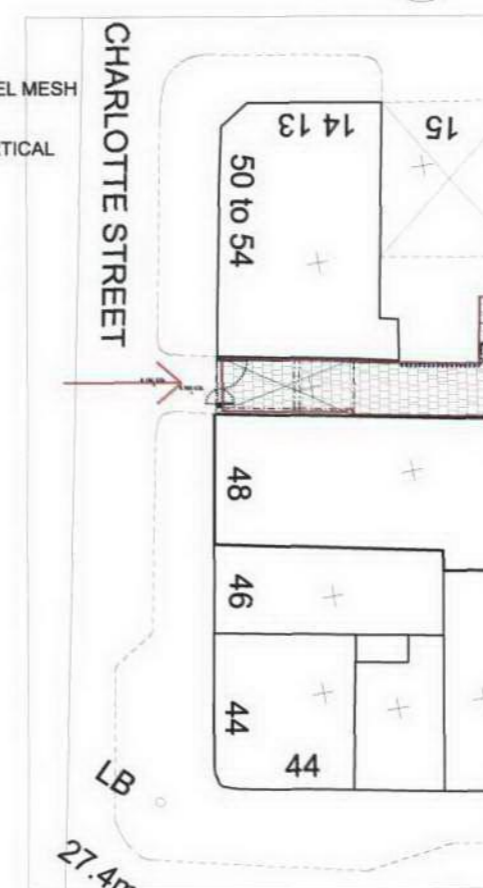
BRUSHED SILVER FINISH PANEL
EMBOSSED STREET ADDRESS

LOCATION FOR CLIENTS SIGN

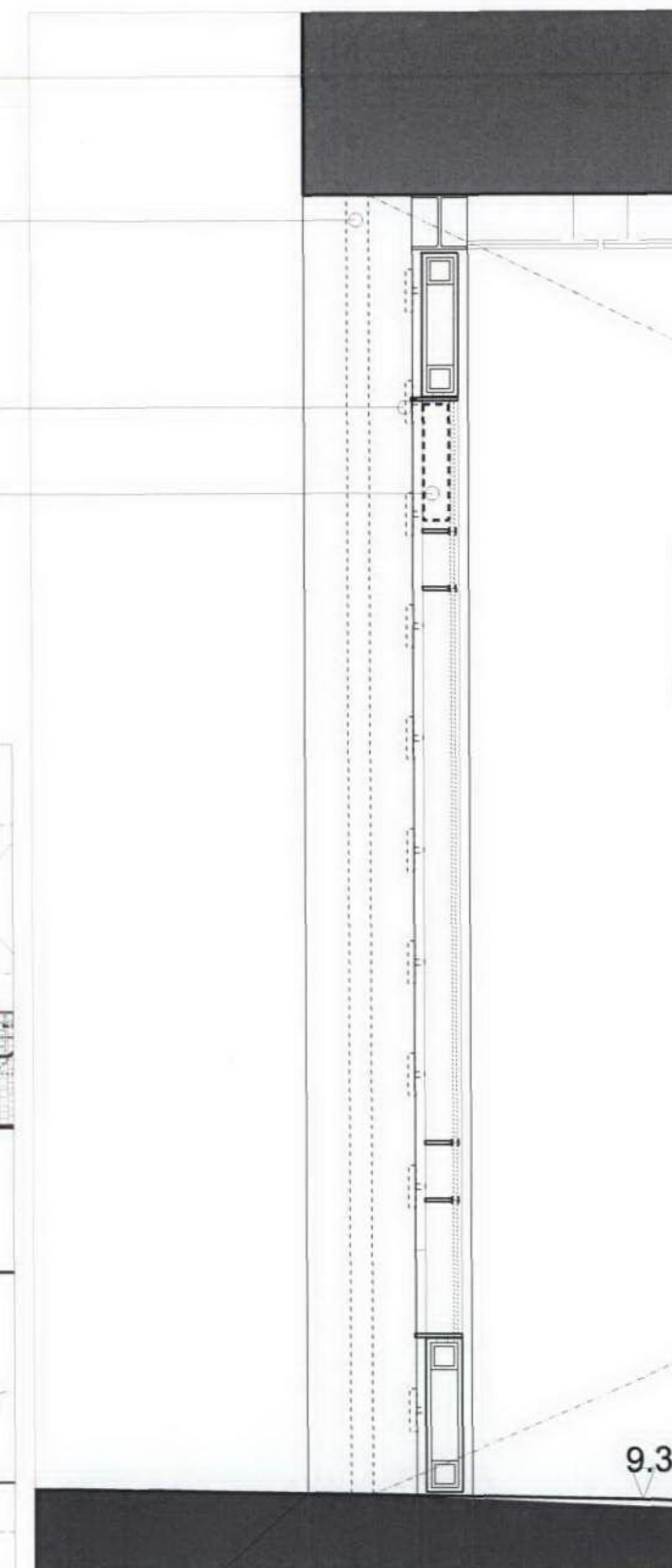
ELECTRICALLY OPERATED BRUSHED ST. STEEL LEAF DOORS

ANTI CLIMB ST. STEEL MESH

HORIZONTAL & VERTICAL ST. STEEL BARS



SITE PLAN NTS



PROPOSED SECTION A THROUGH PASSAGE WAY

CONTRACTORS ARE TO CHECK ALL DIMENSIONS PRIOR TO COMMENCEMENT ON SITE AND NOTIFY THE ARCHITECT OF ANY ERRORS, OMISSIONS, OR DISCREPANCIES.

TATE & HINDLE DESIGN LIMITED RETAIN COPYRIGHT OF THIS DRAWING. IT MAY NOT BE COPIED, ALTERED, OR REPRODUCED IN ANY WAY WITHOUT THEIR WRITTEN AUTHORITY.

rev	description
00	FIRST ISSUE FOR COMMENTS
01	CLIENT SIGN AMENDED

date	int'l	ch'kd	client
22.01.07	DAG		
23.01.07	DAG		

MORLEY POOLED PENSIONS LTD
project
50A CHARLOTTE STREET, LONDON W1

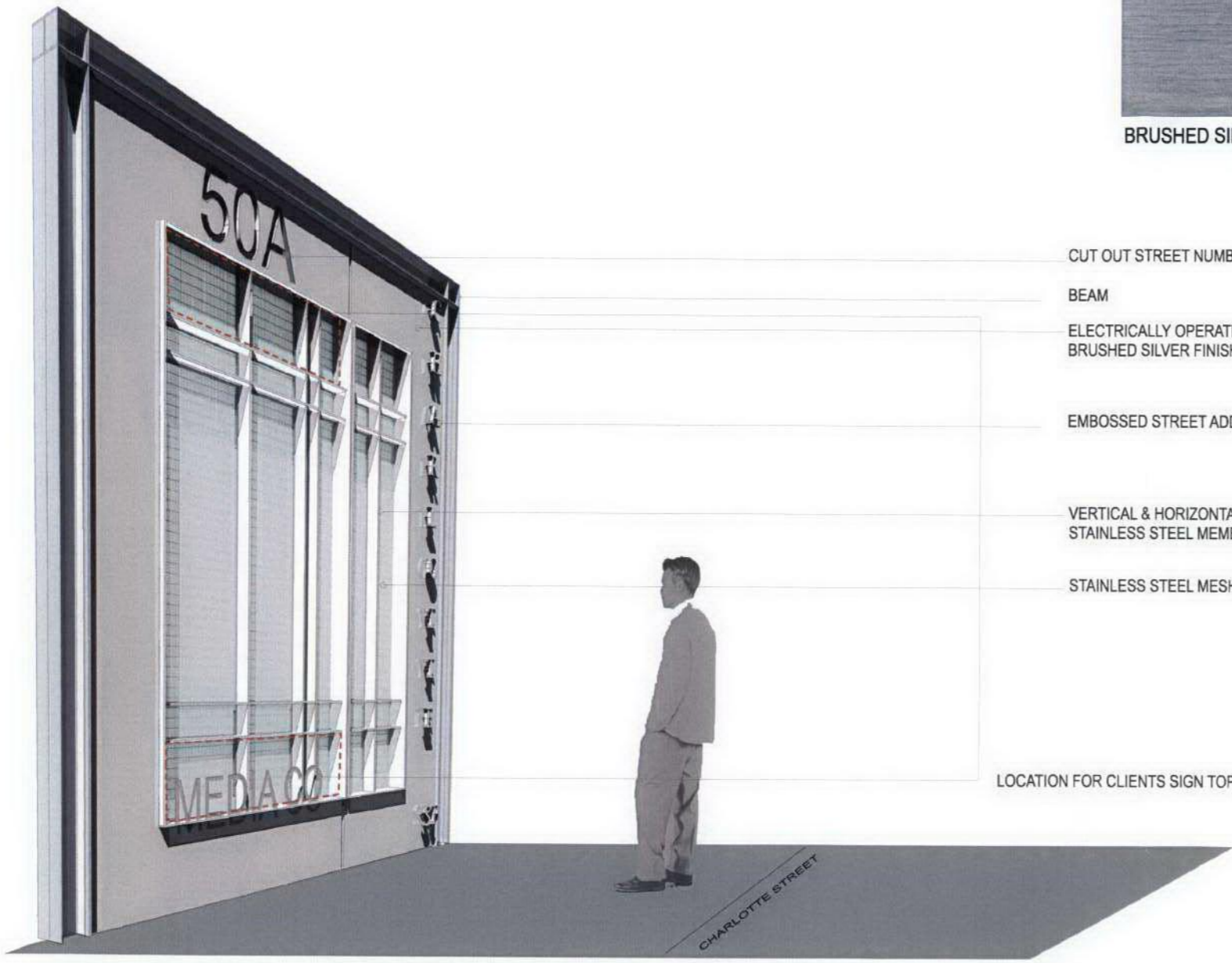
drawn by	date	scale	cadref:	job	dwg	revision
DA	Nov 2006	1:20 @ A3	.dgn	3700	PL_G(02) 001	01

TATE & HINDLE DESIGN LIMITED 1 Lindsey Street Smithfield London EC1A 9HP T 020 7332 4850 F 020 7332 4888 E mail@tatehindle.co.uk W www.tatehindle.co.uk

FOR PLANNING

HINDLE

T A T E



PROPOSED CHARLOTTE STREET GATE



BRUSHED SILVER FINISH SAMPLE

CUT OUT STREET NUMBER

BEAM

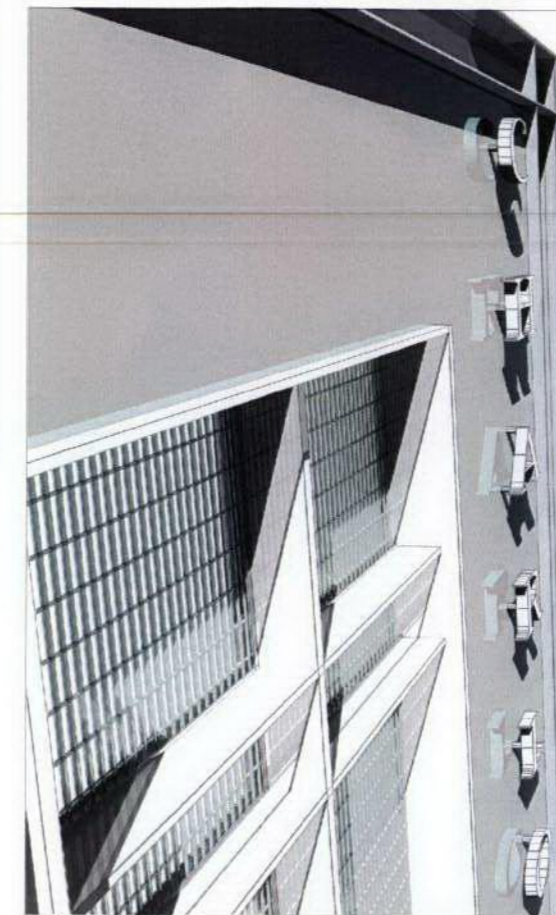
ELECTRICALLY OPERATED LEAF DOORS
BRUSHED SILVER FINISH

EMBOSSSED STREET ADDRESS

VERTICAL & HORIZONTAL
STAINLESS STEEL MEMBERS

STAINLESS STEEL MESH

LOCATION FOR CLIENTS SIGN TOP OR BOTTOM



CORNER DETAIL



SIDEWAYS VIEW

CONTRACTORS ARE TO CHECK ALL DIMENSIONS PRIOR TO COMMENCEMENT ON SITE AND NOTIFY THE ARCHITECT OF ANY ERRORS, OMISSIONS OR DISCREPANCIES.

TATE & HINDLE DESIGN LIMITED RETAIN COPYRIGHT OF THIS DRAWING. IT MAY NOT BE COPIED, ALTERED OR REPRODUCED IN ANY WAY WITHOUT THEIR WRITTEN AUTHORITY.

rev	description	date	int	ch'kd	client	drawing
00	FIRST ISSUE FOR COMMENTS	22.01.07	DAG		MORLEY POOLED PENSIONS LTD	PROPOSED NEW GATE ALONG CHARLOTTE STREET
01	CLIENT SIGN LOCATION AMENDED	24.01.07	DAG		50A CHARLOTTE STREET, LONDON W1	CAD VIEWS
					drawn by	date
					DA	Nov 2006
					scale	NTS @ A3
					cadref:	.dgn
					job	3700
					dwg	PL_G(02) 002
					revision	-1
TATE & HINDLE DESIGN LIMITED 1 Lindsey Street Smithfield London EC1A 9HP T 020 7332 4850 F 020 7332 4888 E mail@tatehindle.co.uk W www.tatehindle.co.uk						

HINDLE

T A T E



EXISTING GATE ON CHARLOTTE STREET



PROPOSED GATE ON CHARLOTTE STREET

CONTRACTORS ARE TO CHECK ALL DIMENSIONS PRIOR TO COMMENCEMENT ON SITE AND NOTIFY THE ARCHITECT OF ANY ERRORS, OMISSIONS, OR DISCREPANCIES.

TATE & HINDLE DESIGN LIMITED RETAIN COPYRIGHT OF THIS DRAWING. IT MAY NOT BE COPIED, ALTERED OR REPRODUCED IN ANY WAY WITHOUT THEIR WRITTEN AUTHORITY.

rev	description
00	FIRST ISSUE FOR COMMENTS

date	int	ch'kd	client
24.01.07	DAG		

MORLEY POOLED PENSIONS LTD
project
50A CHARLOTTE STREET, LONDON W1

drawing
PROPOSED NEW GATE ALONG
CHARLOTTE STREET
VIEW BEFORE & AFTER

drawn by	date	scale	cadref:	job	dwg	revision
DA	Nov 2006	NTS @ A3	.dgn	3700	PL_G(02) 003	00

TATE & HINDLE DESIGN LIMITED 1 Lindsey Street Smithfield London EC1A 9HP T 020 7332 4850 F 020 7332 4888 E mail@tatehindle.co.uk W www.tatehindle.co.uk

FOR PLANNING

HINDLE
TATE