





NOTES  
DO NOT SCALE FROM THIS DRAWING.  
ALL DIMENSIONS TO BE CHECKED ON SITE.  
ALL OMISSIONS AND DISCREPANCIES TO BE REPORTED TO THE ARCHITECT IMMEDIATELY.

 WHEELCHAIR COMPLIANT UNIT

 ADAPTABLE FOR WHEELCHAIR USERS



Planning Condition 03 20/12/06 CM A  
Date Check Rev  
**S T A G E D**

**SQUIRE AND PARTNERS**

77 Wicklow Street London WC1X 9JY  
Tel 020 7278 5555 Fax 020 7239 0495  
email@squireandpartners.com  
www.squireandpartners.com

Project  
2-20 Winchester Road  
London NW 3

Drawing  
Wheelchair Compliant Units  
First Floor Plan  
Planning Condition 03

Drawn	Date	Scale
DL	20/12/2006	1:125
Job number	Drawing number	Revision
04041	15-01_PC03-02	A

Original Drawing Size A1





NOTES  
DO NOT SCALE FROM THIS DRAWING.  
ALL DIMENSIONS TO BE CHECKED ON SITE.  
ALL OMISSIONS AND DISCREPANCIES TO BE REPORTED TO THE ARCHITECT IMMEDIATELY.

 WHEELCHAIR COMPLIANT UNIT  
 ADAPTABLE FOR WHEELCHAIR USERS

Planning Condition 03 20/12/06 CM A  
Date Check Rev

**S T A G E D**

**SQUIRE AND PARTNERS**

77 Wicklow Street London WC1X 9JY  
Tel 020 7278 5555 Fax 020 7239 0495  
email@squireandpartners.com  
www.squireandpartners.com

Project  
2-20 Winchester Road  
London NW 3

Drawing  
Wheelchair Compliant Units  
Second Floor Plan  
Planning Condition 03

Drawn Date Scale  
DL 20/12/2006 1:125

Job number Drawing number Revision  
04041 15-01\_PC03-03 A

Original Drawing Size A1



NOTES  
DO NOT SCALE FROM THIS DRAWING.  
ALL DIMENSIONS TO BE CHECKED ON SITE.  
ALL OMISSIONS AND DISCREPANCIES TO BE REPORTED TO THE ARCHITECT IMMEDIATELY.

 WHEELCHAIR COMPLIANT UNIT  
 ADAPTABLE FOR WHEELCHAIR USERS



Planning Condition 03 03/01/07 CM A  
Date Check Rev

S T A G E D

SQUIRE AND PARTNERS

77 Wicklow Street London WC1X 9JY  
Tel 020 7278 5555 Fax 020 7239 0495  
email@squireandpartners.com  
www.squireandpartners.com

Project  
2-20 Winchester Road  
London NW 3

Drawing  
Wheelchair Compliant Units  
Third Floor Plan  
Planning Condition 03

Drawn Date Scale  
DL 02/01/2007 1:125

Job number Drawing number Revision  
04041 15-01\_PC03-04 A

Original Drawing Size A1





NOTES  
DO NOT SCALE FROM THIS DRAWING.  
ALL DIMENSIONS TO BE CHECKED ON SITE.  
ALL OMISSIONS AND DISCREPANCIES TO BE REPORTED TO THE ARCHITECT IMMEDIATELY.

- WHEELCHAIR COMPLIANT UNIT
- ADAPTABLE FOR WHEELCHAIR USERS

Planning Condition 03	03/01/07	CM	A
	Date	Check	Rev
<b>S T A G E</b>			
<b>D</b>			

**SQUIRE AND PARTNERS**

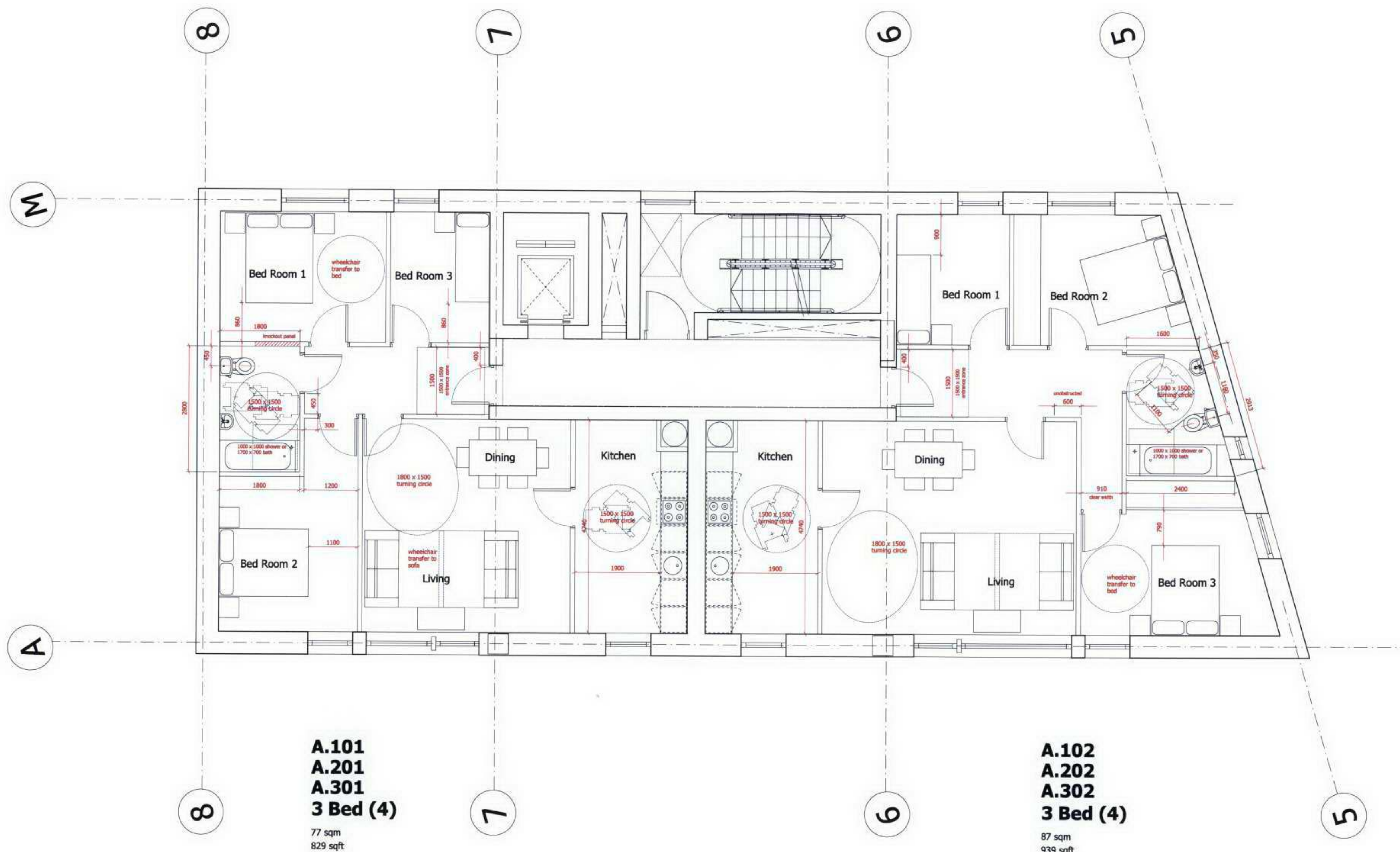
77 Wicklow Street London WC1X 9JY  
Tel 020 7278 5555 Fax 020 7239 0495  
email@squireandpartners.com  
www.squireandpartners.com

Project  
2-20 Winchester Road  
London NW 3

Drawing Wheelchair Compliant Units Fourth Floor Plan Planning Condition 03		
Drawn	Date	Scale
DL	02/01/2007	1:125
Job number	Drawing number	Revision
04041	15-01_PC03-05	A
Original Drawing Size A1		



NOTES  
DO NOT SCALE FROM THIS DRAWING.  
ALL DIMENSIONS TO BE CHECKED ON SITE.  
ALL OMISSIONS AND DISCREPANCIES TO BE REPORTED TO THE ARCHITECT IMMEDIATELY.



#### Wheelchair Housing Design Guide Compliance

- living space furniture as SDS requirements
- maneuverability space as required for all rooms
- 1350 clear in front of all furniture and drawers
- knockout panel between main bedroom and all furniture
- WC adapted for full accessibility
- 1000mm clear for side/front transfer to armchair and main bed

#### Scheme Development Standards (SDS) Compliance

- living, dining and kitchen furnishing requirements
- door clear opening minimum 775mm typical
- 550mm minimum between bottom/side bed and wall/furniture
- wheelchair manoeuvre space more onerous for wheelchair housing design guide
- minimum passing zone more onerous for wheelchair housing design guide

#### Lifetime Homes Compliance

- wheelchair housing design guide generally more onerous

Planning Condition 03 20/12/06 CM A  
Date Check Rev  
**S T A G E D**  
**SQUIRE AND PARTNERS**

77 Wicklow Street London WC1X 9JY  
Tel 020 7278 5555 Fax 020 7239 0495  
email@squireandpartners.com  
www.squireandpartners.com

Project  
2-20 Winchester Road  
London NW 3

Drawing  
Wheelchair Compliant Flat  
Block A

Typical Floors 1st, 2nd, 3rd

Drawn Date Scale  
DL 20/12/2006 1:50

Job number Drawing number Revision  
04041 15-01\_PC03-07 A

Original Drawing Size A1



NOTES  
DO NOT SCALE FROM THIS DRAWING.  
ALL DIMENSIONS TO BE CHECKED ON SITE.  
ALL OMISSIONS AND DISCREPANCIES TO BE  
REPORTED TO THE ARCHITECT IMMEDIATELY.

**B.104  
B.204  
1 Bed (2)**  
53 sqm  
570 sqft

**Wheelchair Housing Design Guide Compliance**

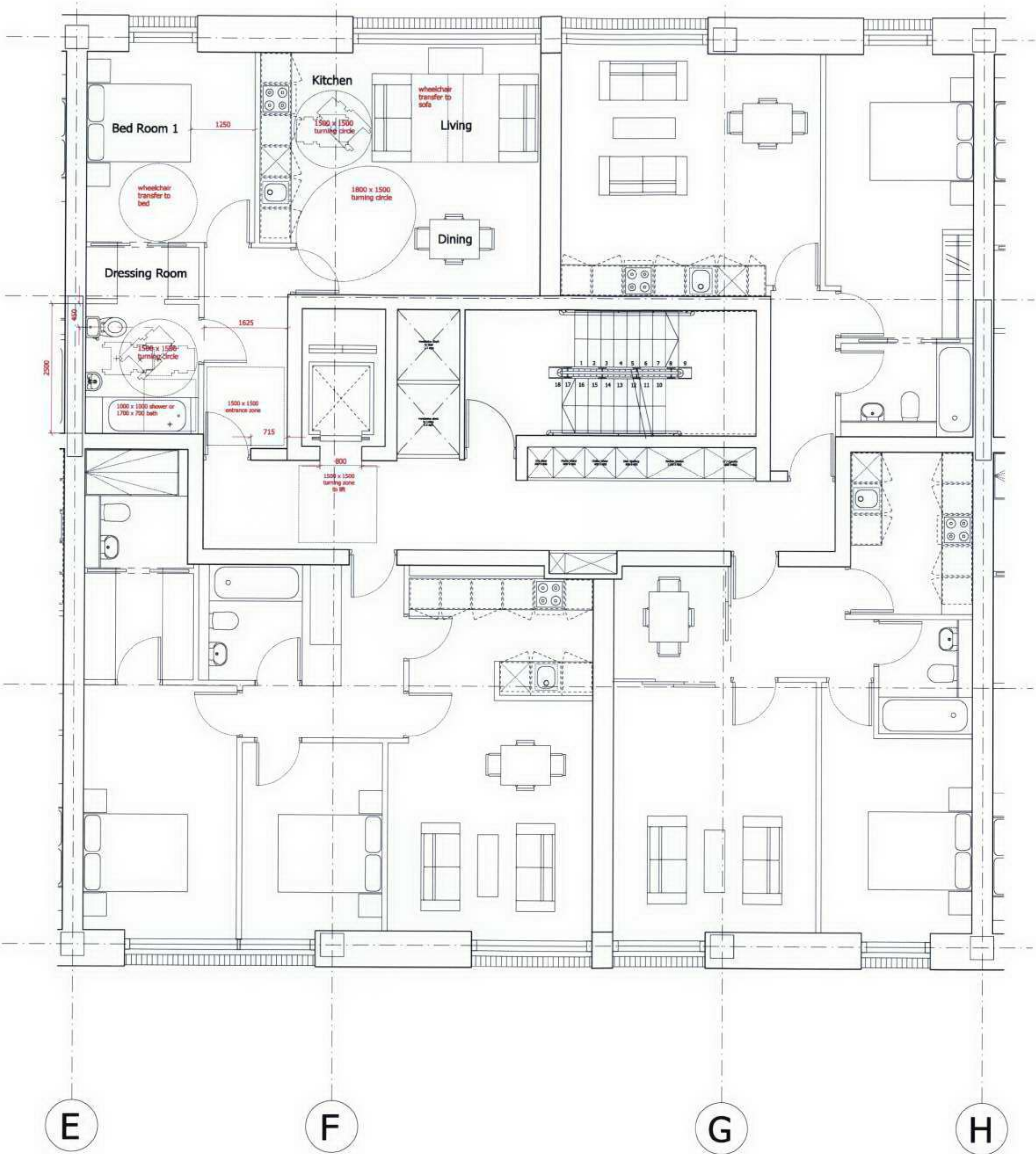
- living space furniture as SDS requirements
- maneuverability space as required for all rooms
- 1350 clear in front of all furniture and drawers
- WC adapted for full accessibility
- 1000mm clear for side/front transfer to armchair and main bed

**Scheme Development Standards (SDS) Compliance**

- living, dining and kitchen furnishing requirements
- door clear opening minimum 775mm typical
- 550mm minimum between bottom/side bed and wall/furniture
- wheelchair manoeuvre space more onerous for wheelchair housing design guide
- minimum passing zone more onerous for wheelchair housing design guide

**Lifetime Homes Compliance**

- wheelchair housing design guide generally more onerous



Planning Condition 03	20/12/06	CM	A
	Date	Check	Rev
S	T	A	G
E			D

**SQUIRE AND PARTNERS**

77 Wicklow Street London WC1X 9JY  
Tel 020 7278 5555 Fax 020 7239 0495  
email@squireandpartners.com  
www.squireandpartners.com

Project  
2-20 Winchester Road  
London NW 3

Drawing

**Wheelchair Compliant Unit**

**Block B**

**First & Second Floor**

Drawn	Date	Scale
DL	20/12/2006	1:50
Job number	Drawing number	Revision
04041	15-01_PC03-08	A

Original Drawing Size A1



NOTES  
DO NOT SCALE FROM THIS DRAWING.  
ALL DIMENSIONS TO BE CHECKED ON SITE.  
ALL OMISSIONS AND DISCREPANCIES TO BE  
REPORTED TO THE ARCHITECT IMMEDIATELY.

#### Wheelchair Housing Design Guide Compliance

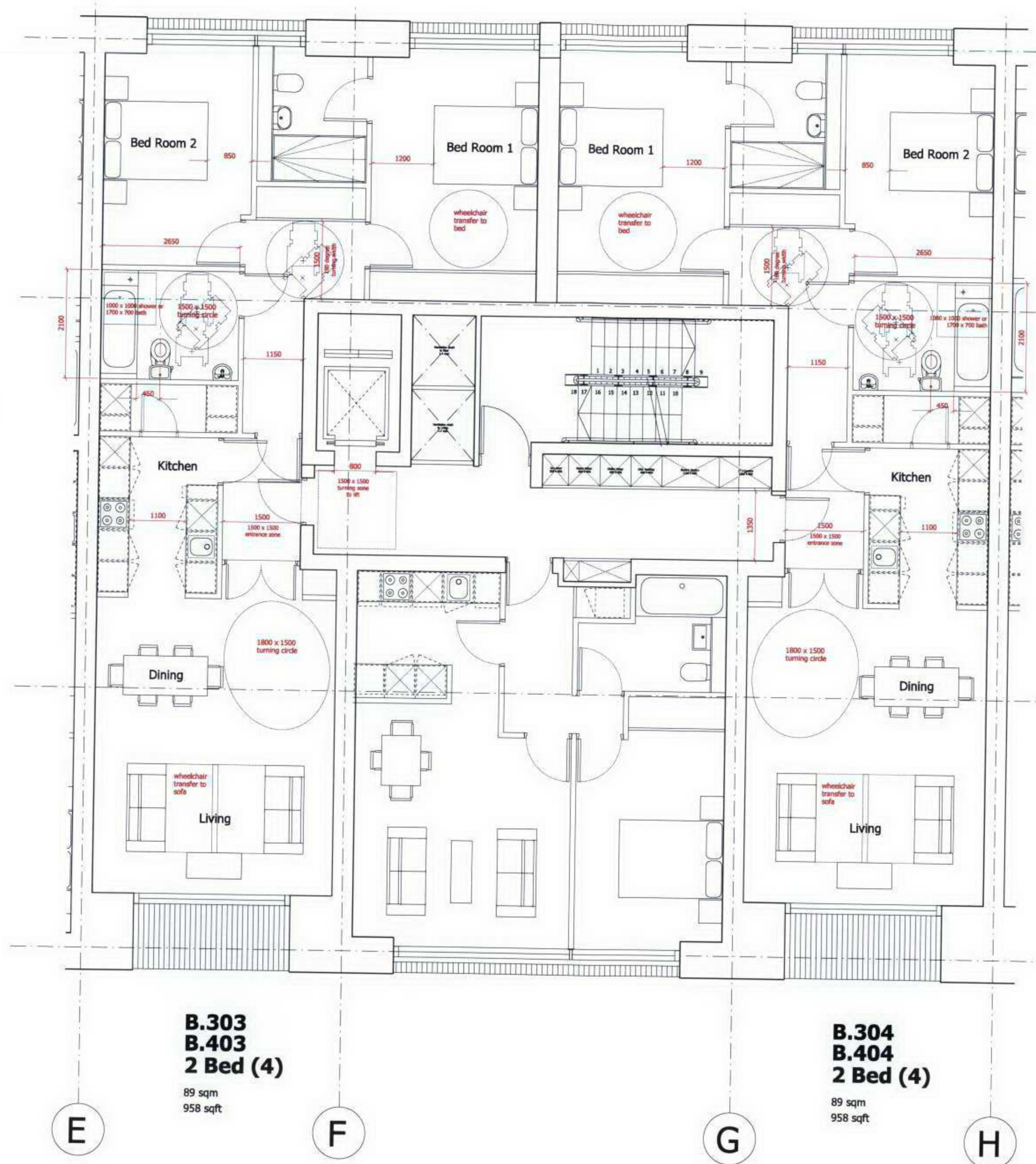
- living space furniture as SDS requirements
- manoeuvrability space as required for all rooms
- 1350 clear in front of all furniture and drawers
- WC adapted for full accessibility
- 1000mm clear for side/front transfer to armchair and main bed

#### Scheme Development Standards (SDS) Compliance

- living, dining and kitchen furnishing requirements
- door clear opening minimum 775mm typical
- 550mm minimum between bottom/side bed and wall/furniture
- wheelchair manoeuvre space more onerous for wheelchair housing design guide
- minimum passing zone more onerous for wheelchair housing design guide

#### Lifetime Homes Compliance

- wheelchair housing design guide generally more onerous



**B.303  
B.403  
2 Bed (4)**

89 sqm  
958 sqft

**B.304  
B.404  
2 Bed (4)**

89 sqm  
958 sqft



Planning Condition 03	20/12/06	CM	A
	Date	Check	Rev
S	T	A	G
E			D

SQUIRE AND PARTNERS

77 Wicklow Street London WC1X 8Y  
Tel 020 7278 5555 Fax 020 7239 0495  
email@squireandpartners.com  
www.squireandpartners.com

Project:  
2-20 Winchester Road  
London NW 3

Drawing  
Wheelchair Compliant Unit  
Block B  
Third & Fourth Floor

Drawn	Date	Scale
DL	20/12/2006	1:50
Job number	Drawing number	Revision
04041	15-01_PC03-09	A

Original Drawing Size A1