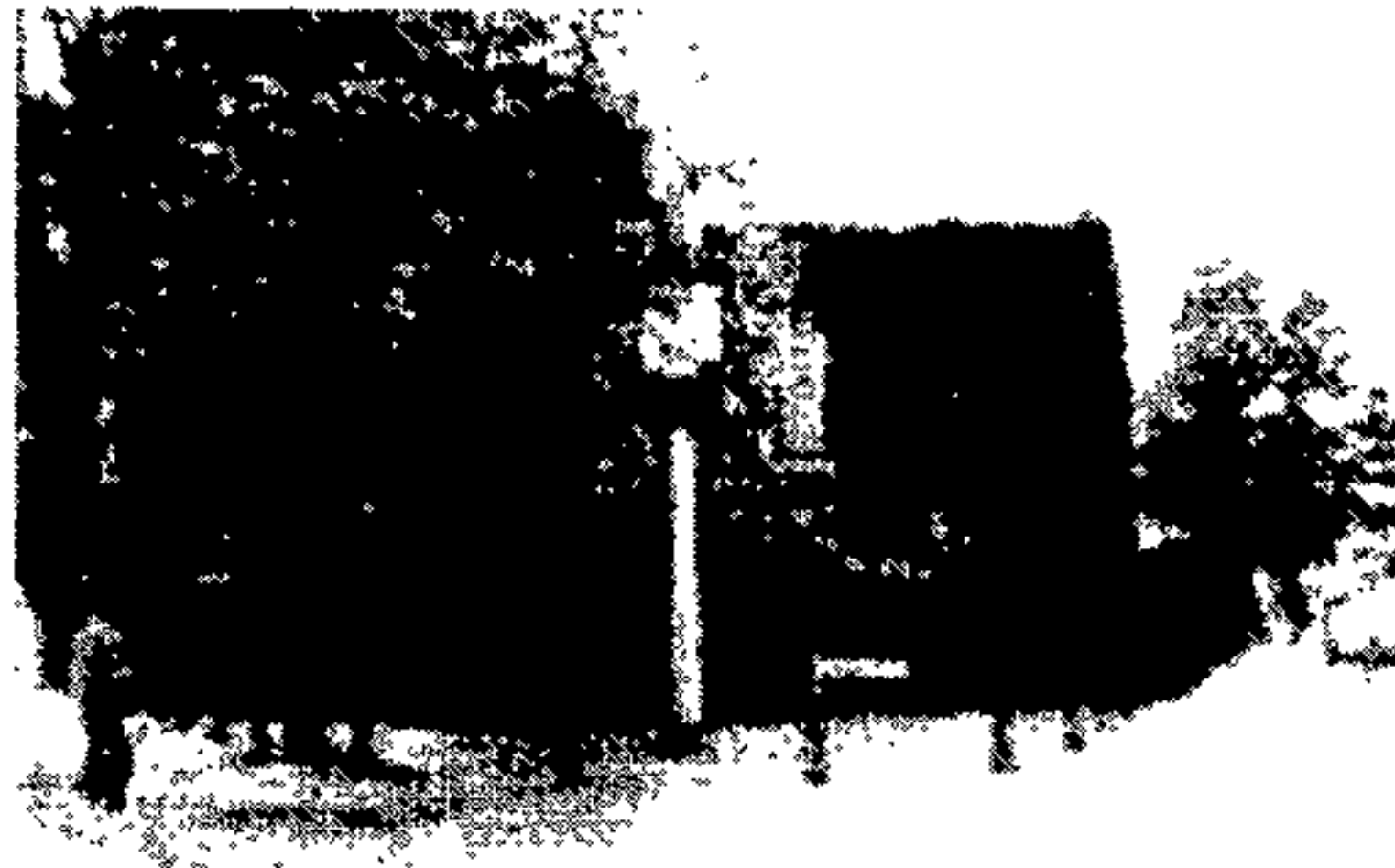


**Appendix 1 The People's Millions Project Plan – Sharp's Sound Garden  
Submitted September 2005**

**1. Need for the project**

The small informal garden attached to Cecil Sharp House (CSH) where flowers and a 300 year old London Plane tree grow is deteriorating to the point its brick wall is crumbling and the garden is dilapidated (established in 1930 when the house was built). Situated at a fork in the road between Regent's Park Road and Gloucester Road, years of busy traffic and city life have taken their toll. There remains a pressing need to repair the wall and improve enjoyment of, and access to, the site for the benefit of the local community and the estimated 25,000 Cecil Sharp House users from all over the world each year.



EFDSS staff have consulted with their trustees, users of the house, Camden Council representatives and Camden Society staff in support of the principle that the garden should be maintained by, and for the benefit of, the local community. Furthermore, the group wishes to encourage more people to use the House and an improved garden would be an additional attraction and reason to visit.

The group is considering options that do not involve building work to attract a more diverse range of people, but felt involving the local community in the transformation of the garden would bring a sense of greater ownership of the House, thus empowering them to improve the quality of their lives through active recreation. It felt establishing a sound garden would meet EFDSS's aims and objects in an innovative and contemporary way, thus providing "the means and apparatus for the visual and mechanical reproduction of folk dances, songs and music." The design of such a garden would need therefore to reflect the function of Cecil Sharp House (ie music, song and dance), in a series of permanent and static musical sculptures. We have also identified disabled people as an under-represented group we wish to attract to CSH through our monitoring of audiences.

We were approached by the sound sculptor, Henry Dagg, a number of years ago to undertake a commission for the garden but have not been in a financial situation to take up his offer until the advent of The People's Millions funding programme. Henry has undertaken a number of similar commissions at his residence - a small factory in Faversham, Kent. One such commission involved Evelyn Glennie, the hearing impaired professional percussionist, as featured on Meridian TV last year (there may be the opportunity to involve Evelyn in this project too). We can of course supply DVDs of Henry's work.

EFDSS investigated undertaking a call for donations from members for this project, but felt that following a similar request to sustain our Education Manager's post (part-funded by Sport England), donation 'fatigue' had set in.

The garden has much potential to offer as a peaceful haven from the hurly burly of urban Camden in providing a sense of place for many of the existing and new visitors to Cecil Sharp House. It is small enough to make an attractive landmark in Camden, but large enough for small open air events such as the resident contemporary dance company, Stacked Wonky's May fete, held there in May.

## 2. Aims and objectives

We will undertake landscaping and repairs and commission the composer Henry Dagg to build sound sculptures in a dilapidated garden in Camden. Henry will involve people with learning disabilities from the charity, The Camden Society ([www.thecamdensociety.co.uk](http://www.thecamdensociety.co.uk)) to incorporate their ideas into his design. Each sculpture will be powered by natural sources/renewable energy (wind, rain, sun, etc) and/or by human muscle to minimise their environmental, ecological or sustainability impact. Project participants will celebrate the opening with family members, friends and carers. Local residents have free access upon request. The project will be the first of this partnership and it is expected to lead to further collaborations and activity in the garden.

The aim of our project is to improve the design, appearance and accessibility of a local amenity by creating a unique sound garden. We will improve the design and appearance of the small garden at Cecil Sharp House by involving up to ten people with learning disabilities over 45 years old from The Camden Society's "Choices" project in Kentish Town in an environmental improvement scheme. The creation of the sound garden will provide a source of enjoyment and create a community tradition of visiting the garden, a source of spectacle and a range of activities based around it.

We will attract visitors to Sharp's Sound Garden through the following work:

- Improved signage
- Publicity for Sharp's Sound Garden on the EFDSS and The Camden Society websites
- Production and distribution of press releases to London media
- Production of photos for our promotional flyers
- Publication of editorial & photos in members' newsletter – *English Dance & Song* and our *Annual Report*
- Community groups will have free access to the garden
- A free booking policy, run by the Caretaker staff, for groups wishing to visit
- Development of a performing group using the sound sculptures (dependent on participants' abilities)

The garden is presently under-used due to its relative obscurity apart from one-off events, therefore this project and its legacy will offer sustainable and long-term impact with minimal resources other than periodic garden maintenance. The garden will provide a free and attractive oasis of tranquillity and improve the aspect of Cecil Sharp House to local residents.

We also wish to develop projects with the following organisations in Camden:

- RNIB ([www.rnib.org.uk/xpedio/groups/public/documents/code/InternetHome.hcsp](http://www.rnib.org.uk/xpedio/groups/public/documents/code/InternetHome.hcsp))
- The Children's Hospital School, Great Ormond Street (pupils with a range of severe medical and/or psychological special needs for 5-19 year olds + SEN early years children [www.gosh.camden.sch.uk/school](http://www.gosh.camden.sch.uk/school))
- Frank Barnes School, Harley Road (A sign bilingual primary school for deaf children catering for children who are severe to profoundly deaf whose first language is British Sign Language aged between 2-11 years. [www.fbarnes.camden.sch.uk](http://www.fbarnes.camden.sch.uk))
- Jack Taylor School, Ainsworth Way, Boundary Road (A 60 place community day school for pupils with severe learning difficulties between the ages of 5 and 19).
- Royal Free Hospital Children's School, 6th Floor, Pond Street (Different groups of pupils including long, medium and short stay patients, pupils referred by the child adolescent



psychiatric department of the hospital and pupils with life threatening illnesses who are regularly readmitted to the hospital. A small number with additional SEN)

- Swiss Cottage School, Avenue Road (A special school for pupils with moderate learning difficulties and additional physical or communication difficulties with over 50% with English as a second language. [www.swisscottage.camden.sch.uk](http://www.swisscottage.camden.sch.uk))

#### **4. Involving the local community**

From audience profile work undertaken in 2003, under-represented audiences for EFDSS include persons under the age of 25, lower income families, members of BME communities and disabled people. We therefore take all reasonable measures to attract disabled people according to the following documents to ensure the widest possible access to our resource:

Equity Policy (2002)

Access Policy (2005)

Child Protection Policy and Procedures (2001)

We do this by making the house accessible to the public on Mondays and community access could be at any time. The House is usually open seven days a week and up to 11pm, although the garden would be limited to daylight hours.

The EFDSS advertises the following public transport routes and directions in its leaflets and on its website to reach the house:

Nearest bus routes - *nos. 274 and C2*

Nearest underground - *Camden Town (Northern Line)*

Postal address:, Cecil Sharp House, 2, Regent's Park Road, London NW1 7AY

Telephone: 020 7485 2206

Fax: 020 7284 0534

E-mail: [info@efdss.org](mailto:info@efdss.org)

Web: [www.efdss.org/](http://www.efdss.org/)

We will advertise free access to Sharp's Sound Garden on our website and in our promotional material. We hope to develop activity and projects to further realise the wider public benefits of this work, in particular targeting members of Black and Minority Ethnic groups/communities.

We hope to attract new visitors to the garden through the publicity gained from The People's Millions. Unfortunately, due to the very tight timescale, annual leave and insecurity presented by The People's Millions application process, we have been unable to involve in the project planning and development potential users and other members of the community as much as we would have wished. However, we are confident Sharp's Sound Garden will be a source of much enjoyment, inspiration and reflection for a wider range of people than currently visit. By working with users of The Camden Society we will ensure the garden and sculptures will appeal to the abilities and interest of a wide mix of people.

As stated elsewhere in the plan, we anticipate increased usage of the garden through in-house publicity, word of mouth and project activity. There are 26 groups who regularly use the house and a wide range of hirers of its spaces (please see appendix). We are currently planning to employ The Hub consultancy to investigate ways in which we can develop new audiences. The garden will add cultural and social value to our organisation and its home at Cecil Sharp House.

#### **5. Why our organisation should manage this workgroup**

Rhythm and pitch in music is very attractive to people with learning disabilities and there is much interest in this work from the group at The Camden Society. Our Education manager is a qualified teacher with much experience working with a range of groups. The Management team's evaluation and monitoring process will identify generic learning outcomes that will enhance participants'

personal, social, creative, technical and horticultural skills. Pastoral care will be undertaken by The Camden Society staff, supported by EFDSS staff. The Project Manager is a qualified and experienced arts manager working in music management for over 10 years. His CV can be supplied upon request.

## **6. Sustainability – making a lasting difference to the local environment and to the quality of life**

The project will improve the design and appearance of the garden and involve people with learning disabilities in environmental improvements. It will reduce isolation, develop creativity and improve their employability prospects through the building of new skills and extend involvement in social activity. The creation of a sound garden will provide a unique source of enjoyment and create a community tradition and activities based around it. Further long-term benefits include:

- The work will improve the garden and its boundary wall as a local amenity
- Offering opportunities to EFDSS, community users and future partners to develop activity to further enhance and exploit this resource
- A wider range of audiences for Cecil Sharp House, extending the understanding of folk culture
- Development of a partnership between EFDSS and The Camden Society
- EFDSS assimilating its experience in working with people with learning disabilities into its operational culture and adjust subsequent policies
- Participants gaining valuable skills working with an artist and EFDSS staff
- Provision of a visitor attraction in Camden and improvement of the local economy
- An improved “can do” culture for EFDSS staff
- EFDSS staff monitoring use/visits using a diary and evaluating the financial, environmental, artistic and social impacts annually
- Monitoring and evaluating the publicity generated by this work
- Using questionnaires and a visitor log to document visitors’ experiences
- Further improvement of the Society’s reputation amongst local residents and a greater understanding of what “folk arts” can mean

Members of the management team will collect and collate the participants’ ideas for the garden and sculptures to be incorporated into the designs. There will be additional opportunities for the participants as volunteers to be involved in the landscaping of the garden. A visual document (photos) and any other materials produced by the participants will be collected, prepared and presented to them at the end of the project.

## **7. Permissions**

We do not anticipate requiring any statutory permissions for this project. The sculptures will be *designated garden furniture*.

## **8. Access**

EFDSS commissioned an Access Audit from JMU Access Partnership in June 2004 (supported by the Royal National Institute of the Blind) in line with The Disability Discrimination Act 1995 (DDA) Part II Employment, Part III Access to Goods, Facilities, Services and Premises, and Part IV Education. The audit carried out an assessment of the accessibility of the building for all who may use it as staff or visitors. It identified features that will affect access for disabled people, including wheelchair users and others with mobility impairments, people with sensory impairments and people with learning difficulties. The issues considered affected the convenience of the building for all users not only those with identifiable disabilities. The audit covered the external environment and the approach to the building, as well as internal areas.

The report is being used as a basis for the development of an access strategy, consisting of a planned rolling programme of works subject to regular monitoring and evaluation of progress. Under the DDA we are required to make “reasonable adjustments to ensure disabled people are not discriminated against and can use their services easily and in comfort.”