

FAX



To: Ryan von Ruben
Co: Ryan von Ruben
Fax: 087 07 52 61 29
Re: Flat 35 Southbury

From: Jon Shooter
Pages: 1 of 1
Date: 15-Jan-2007

DEAR Ryan von Ruben

Quote Reference: ORQ1109a

Thank you for your recent enquiry, for which our quotation is below (Please note that all quoted sizes refer to overall external fully weathered kerb/upstand dimensions, supplied by others).

2 off: Glazing Visions Single Sliding Over Roof rooflight. (Overall weathered upstand dimensions) to be 2200mm x 2040 mm. Rooflight to slide in the 2040mm direction. (A recommended pitch of 5-degrees to be built into the kerb, perpendicular to the direction of travel)

Glass Specification (others can be sourced, please contact us for further information):

28mm DGU Comprising of -

6mm Clear Toughened Outer, 16mm Air Filled, black, silicone sealed Spacer, 6mm Clear lowE Toughened Inner

Standard Framework Finish:

Standard Polyester Powder Coated Aluminium Frame To Be:

RAL 9010 Matt White or RAL 7015 Matt Grey. (Standard Dual Colour or Alternative RAL

Colours Are Available To Order at an extra over charge – Please Specify On Enquiry / Order)

ROOFLIGHT QUOTE (Ex-Works, Ex-VAT): £7,846.02 each

Optional Extra's:

Optional additions to the rooflight are available, please specify if required on order:

Option 1 - Rain Sensor	£250 per rooflight
Option 2 - Remote Control Operation	£290 per rooflight
Option 3 - Solenoid Lock	£200 per rooflight
Option 4 - Standard Dual Colour	£250 per rooflight
Option 5 - Proximity Detection	£420 per rooflight

Single Slider Key Features:

- **Concealed Opening Mechanism and Electronics**
- **Min Framework....Max Daylight**
- **Glass Centre pane U-Value of 1.7W/m² k as standard**
- **Non Standard Sizes (limitations will apply), Glass Specifications & Finishes available**
- **Safe Low Voltage Operation (Unit is supplied with 2m flying leads only, connection by others - refer to Glazing Vision wiring diagram ORE0001!)**
- **100% Clear Opening Capacity (suitable for regular access)**
- **One touch opening as well as partial opening capability**
- **Manual Override as standard**

Exclusions:

Access/craneage, Site survey, structural steelwork and upstand/kerb, site electrical connections / fixings up to the kerb/upstand, moving the product(s) from an un-loading point to the area of installation. For information on product weights please contact us directly.

Delivery & Installation:

Option A - Delivery, Installation & Commissioning of Rooflight	£1200 per rooflight
Option B - Delivery Only of Rooflight	£400 per rooflight
(prices for options A & B based on London location, may differ dependant on location)	
Option C - Customer Collection and Installation	£0 per rooflight

Glazing Vision Standard Drawings for this product: ORE001, 602/ASS/001, 602/ASS/002, 602/ASS/003, 602/ASS/004

Supply time from receipt of payment and Signed Order Confirmation: 8 weeks

Quote validity: 90 Days. Warranty: 12 months for all products.

Typical payment terms: 50% advance payment on Order, 50% prior to delivery.

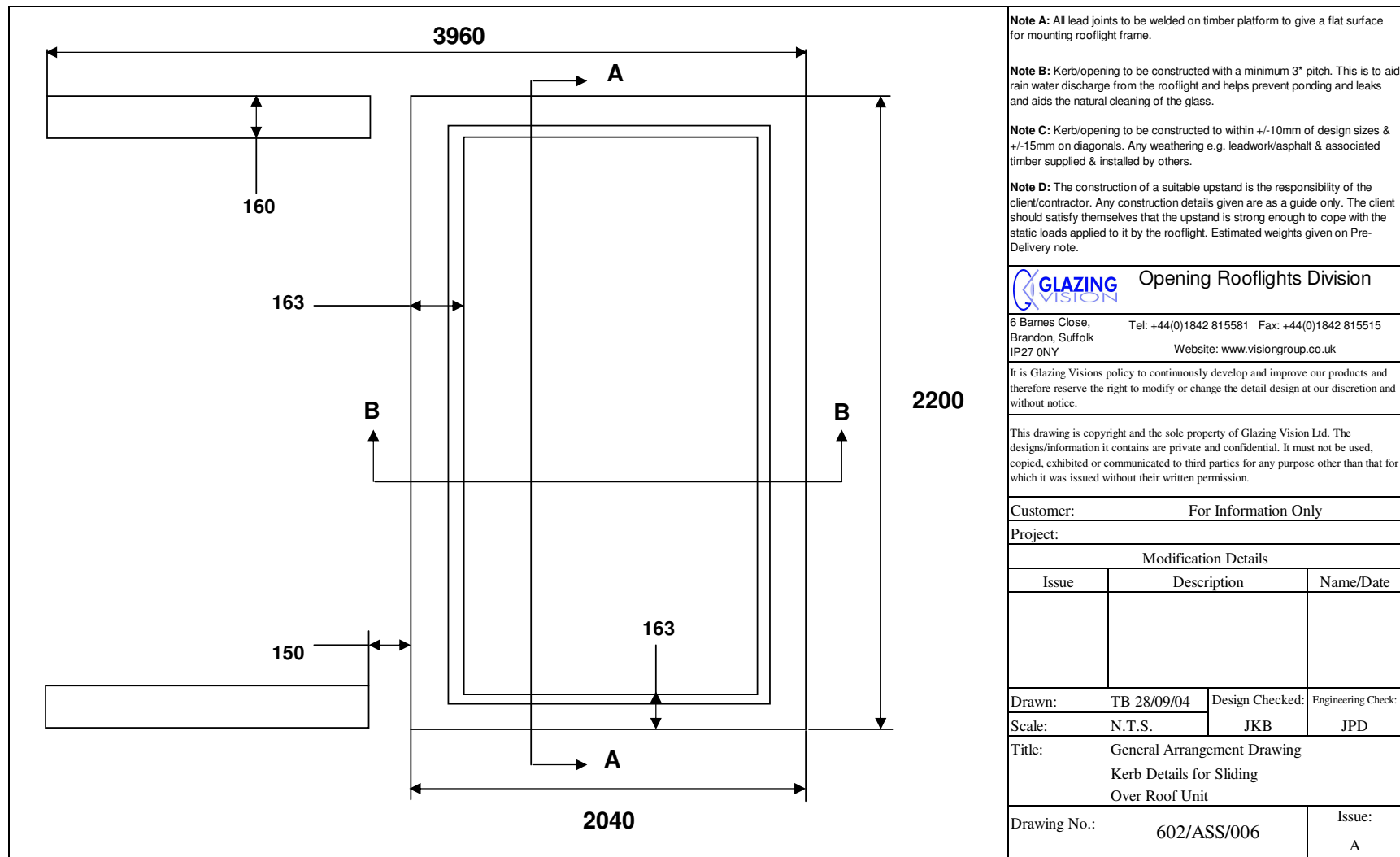
Repeat customer discounts are available. Please note we do not offer 2.5% main contractors discount.

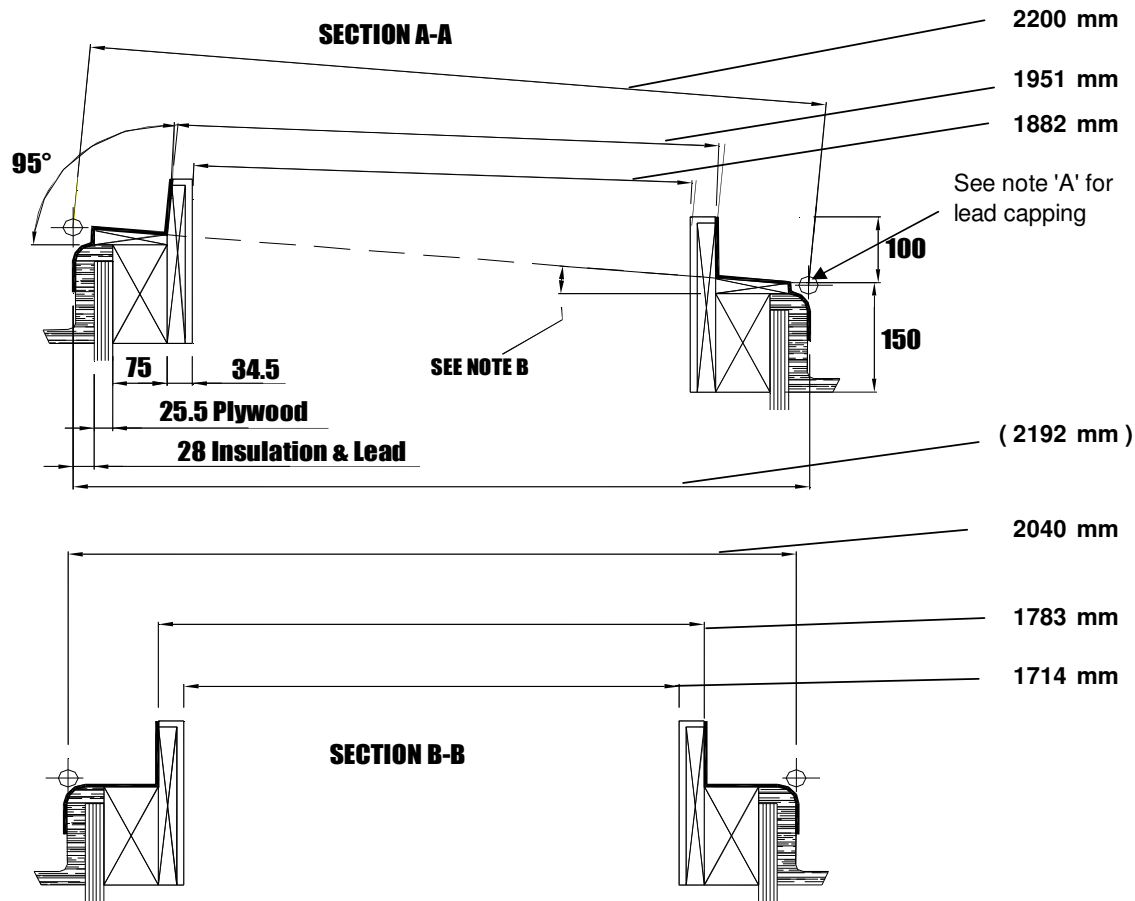
Please note that the above prices do not include VAT.

I trust you find the above of interest, however, if you have any queries please do not hesitate to call.

Kind Regards

On behalf of Glazing Vision Ltd.





Note A: All lead joints to be welded on timber platform to give a flat surface for mounting rooflight frame.

Note B: Kerb/opening to be constructed with a minimum 3° pitch. This is to aid rain water discharge from the rooflight and helps prevent ponding and leaks and aids the natural cleaning of the glass.

Note C: Kerb/opening to be constructed to within +/-10mm of design sizes & +/-15mm on diagonals. Any weathering e.g. leadwork/asphalt & associated timber supplied & installed by others.

Note D: The construction of a suitable upstand is the responsibility of the client/contractor. Any construction details given are as a guide only. The client should satisfy themselves that the upstand is strong enough to cope with the static loads applied to it by the rooflight. Estimated weights given on Pre-Delivery note.

GLAZING VISION Opening Rooflights Division

6 Barnes Close, Brandon, Suffolk IP27 0NY
Tel: +44(0)1842 815581 Fax: +44(0)1842 815515
Website: www.visiongroup.co.uk

It is Glazing Visions policy to continuously develop and improve our products and therefore reserve the right to modify or change the detail design at our discretion and without notice.

This drawing is copyright and the sole property of Glazing Vision Ltd. The designs/information it contains are private and confidential. It must not be used, copied, exhibited or communicated to third parties for any purpose other than that for which it was issued without their written permission.

Customer: For Information Only

Project:

Modification Details

Issue	Description	Name/Date

Drawn: TB 28/09/04 Design Checked: Engineering Check:

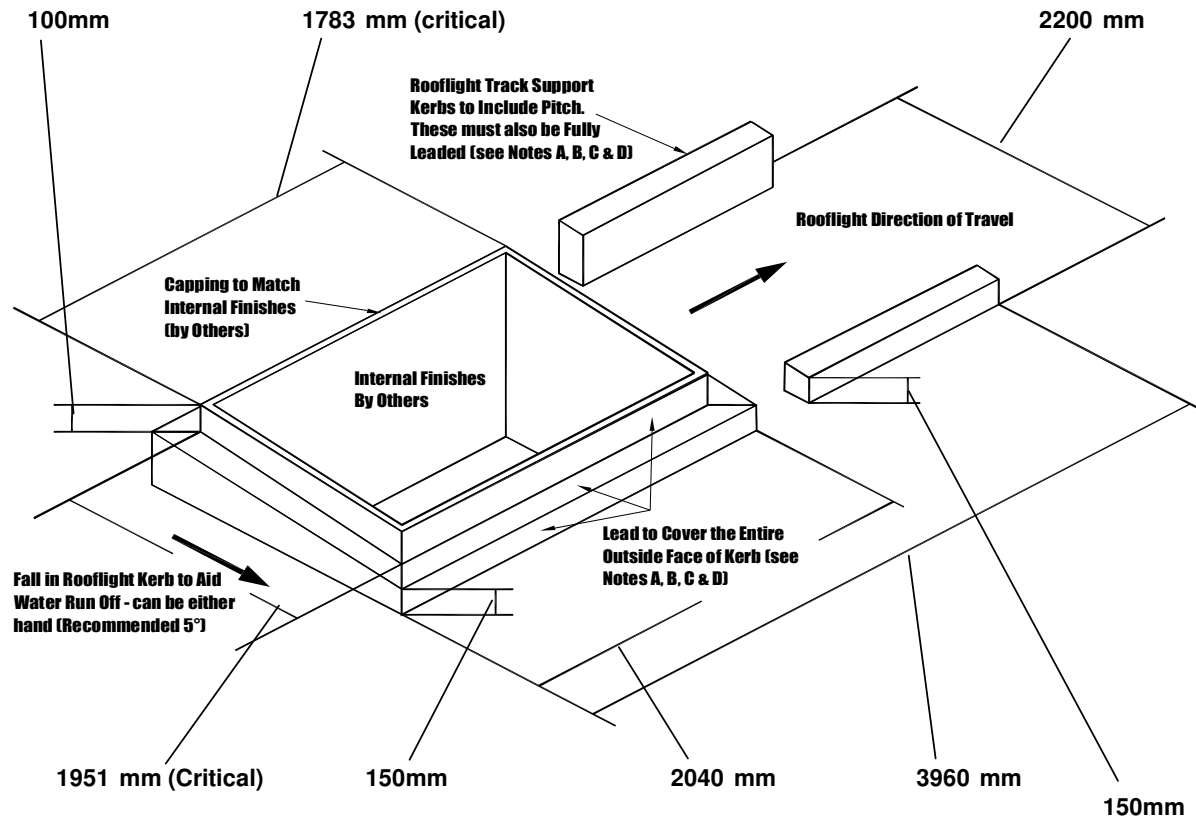
Scale: N.T.S. JKB JPD

Title: General Arrangement Drawing
Kerb Details for Sliding
Over Roof Unit

Drawing No.: 602/ASS/007

Issue:
A

3D Representation of Single Slider Kerb Detail (configurations may change - PLEASE REFER TO GIVEN DIMENSIONS ON DWG's 602/ASS/006 AND 602/ASS/007



The Kerb is the Responsibility of the CLIENT: aborted site visits due to incorrect kerb details may result in additional charges

Note A: All lead joints to be welded on timber platform to give a flat surface for mounting rooflight frame.

Note B: Kerb/opening to be constructed with a minimum 3° pitch. This is to aid rain water discharge from the rooflight and helps prevent ponding and leaks and aids the natural cleaning of the glass.

Note C: Kerb/opening to be constructed to within +/-10mm of design sizes & +/-15mm on diagonals. Any weathering e.g. leadwork/asphalt & associated timber supplied & installed by others.

Note D: The construction of a suitable upstand is the responsibility of the client/contractor. Any construction details given are as a guide only. The client should satisfy themselves that the upstand is strong enough to cope with the static loads applied to it by the rooflight. Estimated weights given on Pre-Delivery note.

GLAZING VISION Opening Rooflights Division

6 Barnes Close, Brandon, Suffolk
IP27 0NY
Tel: +44(0)1842 815581 Fax: +44(0)1842 815515
Website: www.visiongroup.co.uk

It is Glazing Visions policy to continuously develop and improve our products and therefore reserve the right to modify or change the detail design at our discretion and without notice.

This drawing is copyright and the sole property of Glazing Vision Ltd. The designs/information it contains are private and confidential. It must not be used, copied, exhibited or communicated to third parties for any purpose other than that for which it was issued without their written permission.

Customer: For Information Only

Project:

Modification Details

Issue	Description	Name/Date

Drawn: JKB 25/01/05 Design Checked: Engineering Check:

Scale: N.T.S. TB JPD

Title: General Arrangement Drawing
3D Representation of Kerb Details
for Sliding Over Roof Unit

Drawing No.: 602/ASS/008

Issue:
A

