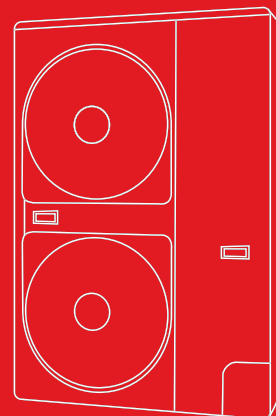


TOSHIBA



Mini-SMMS

R410A VRF AIR CONDITIONING SYSTEM



Flexibility and comfort



The Toshiba MiNi-SMMS is a small VRF system suitable for both private premises and commercial applications. It offers great flexibility and control and is both powerful and compact.

The MiNi-SMMS is designed to bridge the capacity gap between the versatile multi-split systems and the larger capacity VRF systems.

Designed to operate on R410A refrigerant, this space saving system offers all the groundbreaking

technology and benefits of the current Toshiba SMMS VRF, but in a more compact unit.

This solution delivers the precise efficiency and control required by smaller offices, shops and private applications.

Piping connection and operation delivers unbeatable flexibility as only Toshiba know how: joint after header, header after joint, joint after joint and header after header.

Fast and easy to install with simple piping instructions, automatic system addressing also reduces installation time and costs.

In fact, during installation, system addressing can also be customized using the wireless remote controller, eliminating the need for manual switch setting.

MiNi-SMMS

The perfect balance between large and small

This concept was developed to guarantee the most flexible solutions for shops, restaurants, offices, and for all applications where unobtrusive appearance and quiet operation are key advantages.

The special compact design of this new outdoor unit is packed with advanced functions and money-saving advantages that make it the top choice for professionals and individuals who demand the best.

Thanks to exclusive Toshiba technology and the DC twin-rotary compressor, the new range of MiNi-SMMS offers the best solution in terms of energy efficiency with COP values of up to 4.61 for the 4 HP unit.

The extremely compact shape, 1340 x 900 x 320 mm (H x W x D) and its weight of just 117 kg allows easy installation on balconies and patios.

Compared to the SMMS VRF 5 HP unit, the MiNi-SMMS has a volume reduction of 70% and footprint reduction of 60%.

Due to the lightweight design, the MiNi-SMMS does not require anything to support its weight as opposed to the standard VRF systems, this enables faster and easier installation.

Extended refrigerant piping capability, multiple indoor unit combinations, simple piping and wiring offer great operational flexibility together with labour and cost saving installation.

The new MiNi-SMMS system is appropriately designed to achieve optimum performances in various light commercial applications and quiet spaces.



COP 4.61

Capable of operating up to 9 indoor units



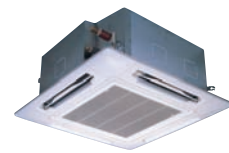
Compact high wall



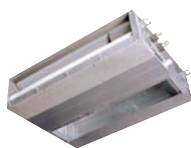
High wall



NEW compact four-way cassette



Four-way cassette



Slim duct



Standard ducted



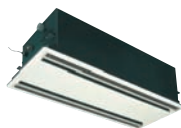
High static pressure ducted model



Floor standing



NEW one-way cassette



Two-way cassette



Ceiling suspended



Floor standing concealed & Tall cabinet

13 indoor units,

a total of 81 variations.

The system is fitted with a range of super quiet, indoor fan coil units in 13 different styles, making this the most comprehensive choice of indoor units available in the market place.

A new compact four-way cassette 600 x 600 mm with a reduced height of just 268 mm is available in the capacity range 2.2 to 5.6 kW.

The TCC Link control system is a standard interface with the full range of controls, as are SMMS controllers. PMV operation is used for areas where very low sound levels are required, making this the ideal solution for hotel rooms and private applications.

Compact high-wall



This new high-wall unit is perfect for modest spaces, such as offices and small shops.

The units are designed to be the most compact (275 x 790 x 208 mm) and lightweight (11 kg) on the market.

This new unit also achieves outstanding sound level performance within multiple application settings, to provide optimized user comfort.

New, compact four-way cassette



The new, compact four way cassette has been designed to suit all standard 600 x 600 mm grid ceilings, allowing for simple installation and easy maintenance.

Its advanced design fits any style of interior decor, too, for rooms where overall appearance is as important a consideration as performance itself.




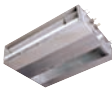










R410A HIGH EFFICIENCY

HIGH RELIABILITY

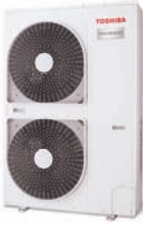
QUIET OPERATION

SMALL AND LIGHTWEIGHT

MiNi-SMMS Indoor unit line-up

| Model type | Model name | Capacity code | Cooling cap. (kW) | Heating cap. (kW) | Model type | Model name | Capacity code | Cooling cap. (kW) | Heating cap. (kW) |
|--|--------------|---------------|-------------------|-------------------|---|---------------|---------------|-------------------|-------------------|
|  | MMU-AP0091H | 1 | 2.8 | 3.2 |  | MMD-AP0071SPH | 0.8 | 2.2 | 2.5 |
| | MMU-AP0121H | 1.25 | 3.6 | 4 | | MMD-AP0091SPH | 1 | 2.8 | 3.2 |
| | MMU-AP0151H | 1.7 | 4.5 | 5 | | MMD-AP0121SPH | 1.25 | 3.6 | 4 |
| | MMU-AP0181H | 2 | 5.6 | 6.3 | | MMD-AP0151SPH | 1.7 | 4.5 | 5 |
| | MMU-AP0241H | 2.5 | 7.1 | 8 | | MMD-AP0181SPH | 2 | 5.6 | 6.3 |
| | MMU-AP0271H | 3 | 8 | 9 |  | MMC-AP0151H | 1.7 | 4.5 | 5 |
| | MMU-AP0301H | 3.2 | 9 | 10 | | MMC-AP0181H | 2 | 5.6 | 6.3 |
| | MMU-AP0361H | 4 | 11.2 | 12.5 | | MMC-AP0241H | 2.5 | 7.1 | 8 |
|  | MMU-AP0481H | 5 | 14 | 16 | | MMC-AP0271H | 3 | 8 | 9 |
| | MMU-AP0071MH | 0.8 | 2.2 | 2.5 | | MMC-AP0361H | 4 | 11.2 | 12.5 |
| | MMU-AP0091MH | 1 | 2.8 | 3.2 | | MMC-AP0481H | 5 | 14 | 16 |
| | MMU-AP0121MH | 1.25 | 3.6 | 4 |  | MMK-AP0072H | 0.8 | 2.2 | 2.5 |
| | MMU-AP0151MH | 1.7 | 4.5 | 5 | | MMK-AP0092H | 1 | 2.8 | 3.2 |
| | MMU-AP0181MH | 2 | 5.6 | 6.3 | | MMK-AP0122H | 1.25 | 3.6 | 4 |
|  | MMU-AP0071WH | 0.8 | 2.2 | 2.5 |  | MMK-AP0071H | 0.8 | 2.2 | 2.5 |
| | MMU-AP0091WH | 1 | 2.8 | 3.2 | | MMK-AP0091H | 1 | 2.8 | 3.2 |
| | MMU-AP0121WH | 1.25 | 3.6 | 4 | | MMK-AP0121H | 1.25 | 3.6 | 4.0 |
| | MMU-AP0151WH | 1.7 | 4.5 | 5 | | MMK-AP0151H | 1.7 | 4.5 | 5.0 |
| | MMU-AP0181WH | 2 | 5.6 | 6.3 | | MMK-AP0181H | 2 | 5.6 | 6.3 |
| | MMU-AP0241WH | 2.5 | 7.1 | 8 | | MMK-AP0241H | 2.5 | 7.1 | 8.0 |
| | MMU-AP0271WH | 3 | 8 | 9 |  | MML-AP0071H | 0.8 | 2.2 | 2.5 |
|  | MMU-AP0071YH | 0.8 | 2.2 | 2.5 | | MML-AP0091H | 1 | 2.8 | 3.2 |
| | MMU-AP0091YH | 1 | 2.8 | 3.2 | | MML-AP0121H | 1.25 | 3.6 | 4 |
| | MMU-AP0121YH | 1.25 | 3.6 | 4 | | MML-AP0151H | 1.7 | 4.5 | 5 |
| | MMU-AP0152SH | 1.7 | 4.5 | 5 | | MML-AP0181H | 2 | 5.6 | 6.3 |
| | MMU-AP0182SH | 2 | 5.6 | 6.3 | | MML-AP0241H | 2.5 | 7.1 | 8 |
| | MMU-AP0242SH | 2.5 | 7.1 | 8 |  | MML-AP0071BH | 0.8 | 2.2 | 2.5 |
| | MMU-AP0071BH | 0.8 | 2.2 | 2.5 | | MML-AP0091BH | 1 | 2.8 | 3.2 |
|  | MMU-AP0091BH | 1 | 2.8 | 3.2 | | MML-AP0121BH | 1.25 | 3.6 | 4 |
| | MMU-AP0121BH | 1.25 | 3.6 | 4 | | MML-AP0151BH | 1.7 | 4.5 | 5 |
| | MMU-AP0151BH | 1.7 | 4.5 | 5 | | MML-AP0181BH | 2 | 5.6 | 6.3 |
| | MMU-AP0181BH | 2 | 5.6 | 6.3 | | MML-AP0241BH | 2.5 | 7.1 | 8 |
| | MMU-AP0241BH | 2.5 | 7.1 | 8 |  | MMF-AP151H | 1.7 | 4.5 | 5 |
| | MMU-AP0271BH | 3 | 8 | 9 | | MMF-AP181H | 2 | 5.6 | 6.3 |
| | MMU-AP0301BH | 3.2 | 9 | 10 | | MMF-AP241H | 2.5 | 7.1 | 8 |
| | MMU-AP0361BH | 4 | 11.2 | 12.5 | | MMF-AP271H | 3 | 8 | 9 |
| | MMU-AP0481BH | 5 | 14 | 16 | | MMF-AP361H | 4 | 11.2 | 12.5 |
| | MMD-AP0181H | 2 | 5.6 | 6.3 | | MMF-AP481H | 5 | 14 | 16 |
| | MMD-AP0241H | 2.5 | 7.1 | 8 | | | | | |
| | MMD-AP0271H | 3 | 8 | 9 | | | | | |
| | MMD-AP0361H | 4 | 11.2 | 12.5 | | | | | |
| | MMD-AP0481H | 5 | 14 | 16 | | | | | |

Technical specifications Heat pump

| | Outdoor unit | | MCY-MAP0401HT | MCY-MAP0501HT | MCY-MAP0601HT |
|---|---------------------------------------|---------|------------------|------------------|------------------|
| | | | 4 HP | 5 HP | 6 HP |
|  | Cooling capacity | kW | 12.1 | 14.0 | 15.5 |
| | EER | | 4.29 | 4.03 | 3.35 |
| | Heating capacity | kW | 12.5 | 16.0 | 18.0 |
| | COP | | 4.61 | 4.00 | 3.71 |
| | Maximum number of indoor units | | 6 | 8 | 9 |
| | Dimensions (H x W x D) | mm | 1340 x 900 x 320 | 1340 x 900 x 320 | 1340 x 900 x 320 |
| | Weight | kg | 117 | 117 | 117 |
| | Maximum equivalent length separation* | m | 125 | 125 | 125 |
| | Maximum actual piping separation* | m | 100 | 100 | 100 |
| | Maximum pipe length* | m | 180 | 180 | 180 |
| | Power supply | V-ph-Hz | 230-1-50 | 230-1-50 | 230-1-50 |

* If the PMV kit is used: maximum equivalent length separation (80 m), maximum actual piping separation (65 m), maximum pipe length (150 m)

Toshiba Air Conditioning
United Technologies House
Guildford Road
Leatherhead
Surrey KT22 9UT



TOSHIBA

Customer Response Centre: 0870 843 0333
E-mail: general.enquiries@toshiba-ac.com
www.toshiba-aircon.co.uk