



Copyright in the design and this drawing is the property of 51% Studios Limited. Reproduction in whole or in part is forbidden without written permission of 51% Studios Limited.

All Dimensions are to be checked on site before any work proceeds. Do not scale this drawing but use only figured dimensions. Any errors or omissions are to be reported to 51%.

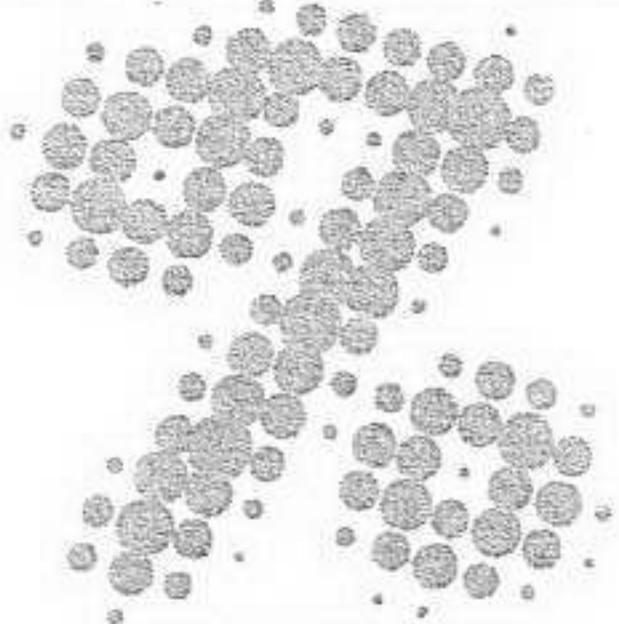
The contractor shall submit full size drawings and specifications to 51% for approval, without which manufacture shall not commence.

This drawing is to be read in conjunction with all the relevant consultants' and / or specialists' drawing/ documents, and any discrepancies or variations are to be notified to 51% before work commences.

revisions

RECEIVED
19 FEB 2007

A	Issued for Planning Permission Feb. 2007
project	28 Brownlow Mews London WC1N 2LA
drawing	Existing Rear Elevation Photos
date	Jan 2007
project number	1079
drawing number	11-PH01
scale	N/A



51% Studios Ltd.
6th Floor
Caxton House
2 Farringdon Road
London EC1M 3HN
www.51pct.com
info@51pct.com