
UCL Main library Phase IB

Schedule of Windows Refurbishment

Doc No: SCH-31-A-001
Issue: Stage D
Rev: -
Date: 23.03.07

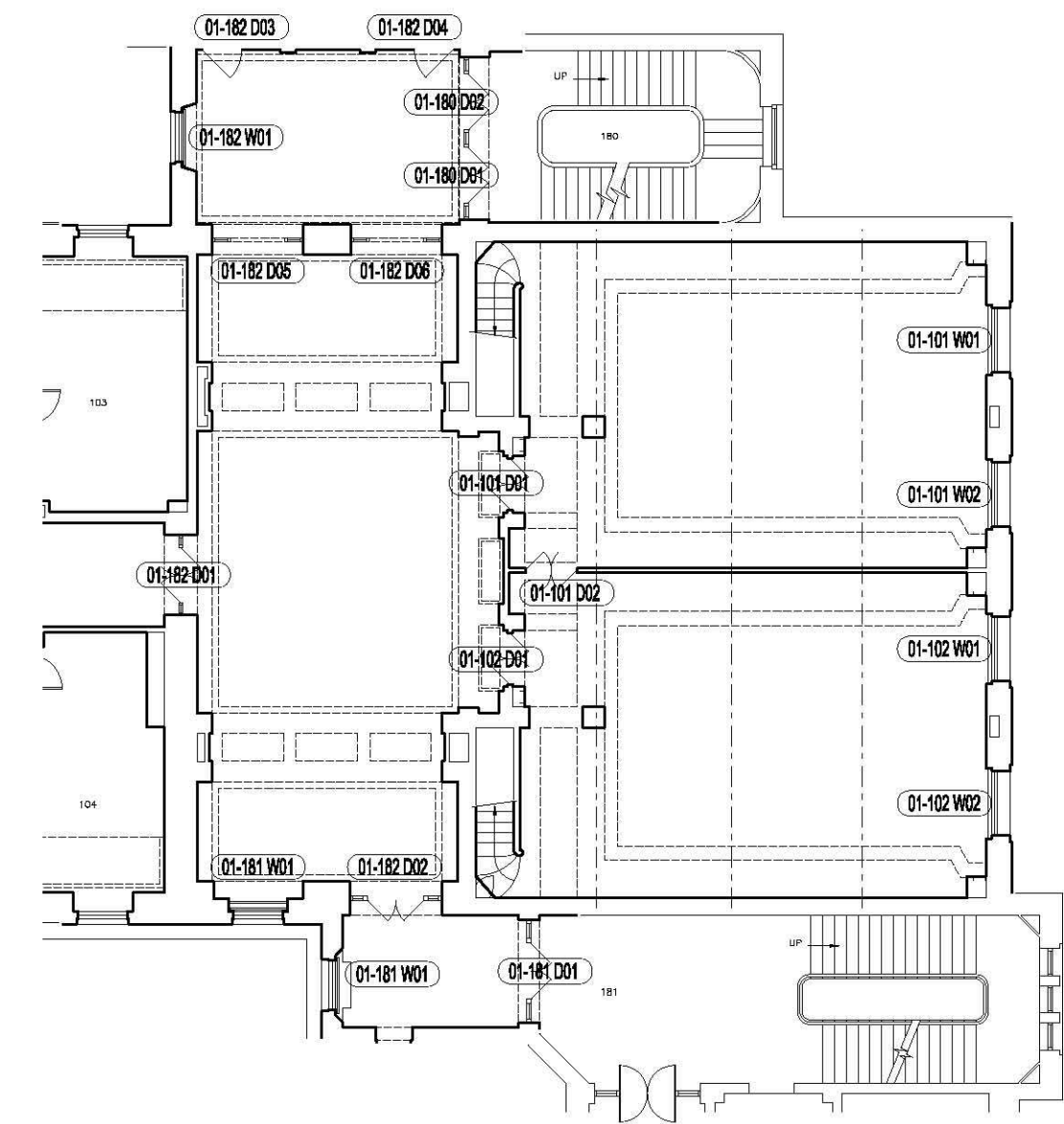


SCHEDULE OF WINDOWS REFURBISHMENT

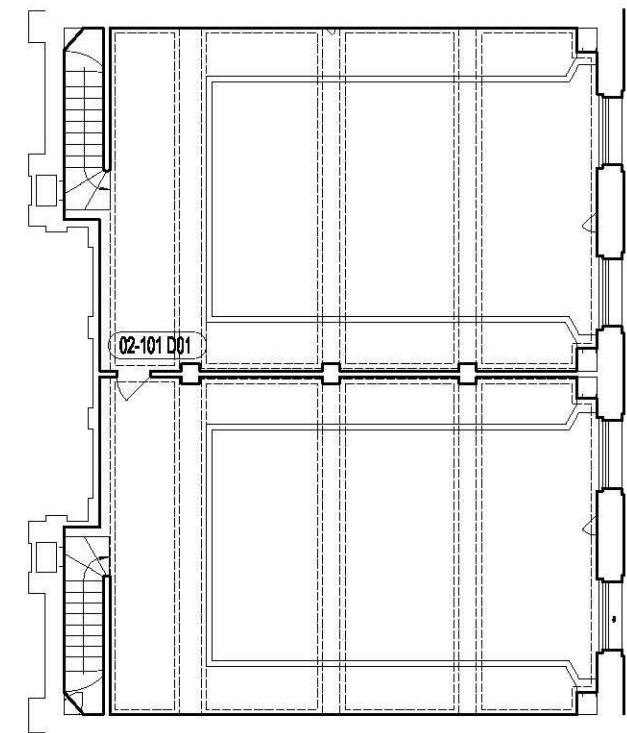
Refurbishment of all sliding sash windows to include the following:

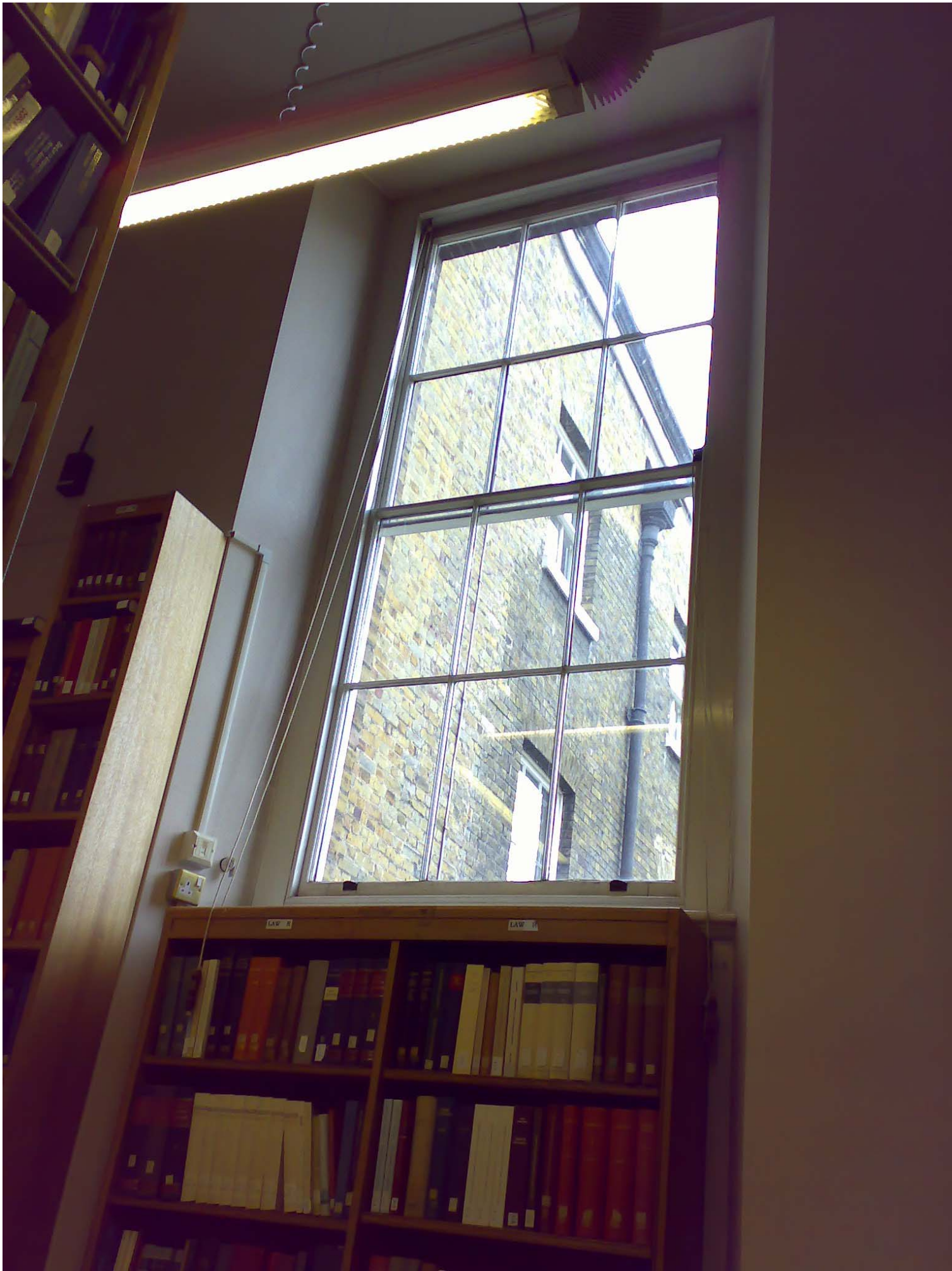
- Removal of staff, parting and cill beads.
- Removal of sashes from frame.
- Removal of ironmongery, pulleys, pocket pieces, sash cords, chains and weights.
- Removal of all paint from frame, sashes and glass.
- Carry out repairs as identified in the condition surveys.
- Replace non-repairable elements as identified in the condition surveys.
- Prepare for redecoration and apply knotting and primer.
- Replace damaged or missing glass as identified in the condition surveys: Allow for Crown Glass.
- Re-putty as necessary.
- Replace all pulleys.
- Allow for replacing chains with new. Re-use existing where sound.
- Replace cords with wire cored sash cords of correct size to match weight of sash and counter weights.
- Re-weigh sashes and adjust sash weights to correctly balance the sashes.
- Refit sashes.
- Fit new staff, parting and cill beads, in hardwood. Staff beads fitted with cups and screws.
- To upper sashes (where upper sash can not be reached from floor level): supply and fix new opening pulleys and cleats and new cords.
- Rake out and repoint external surround to window.
- Ease sashes or casements within frames and adjust to obtain unrestricted movement throughout.
- Ensure sashes do not bind in their frames and are correctly aligned.
- Ease pulleys and lightly oil to prevent rusting, sticking, etc.
- Ensure sashes are functioning properly and are attached to their respective cords.
- Fit new sash lifts, and window restrictors.
- Fit new security locks to all windows.
- Check all ironmongery, e.g. sash locks, sash opening cords and pulleys and lifts, etc. for correct operation.

DOORS AND WINDOWS LOCATIONS
FIRST FLOOR PLAN



MEZZANINE FLOOR PLAN





WINDOW NUMBER	01-182-W01
DESCRIPTION	Timber sash window.
REQUIRED ACTIONS	As above. Fit new secondary glazing to inner side in timber sashes with subdivisions to match existing. Allow for Crown glass.



WINDOW NUMBER	01-182-W02
DESCRIPTION	Timber sash window.
REQUIRED ACTIONS	As above. Fit new secondary glazing to inner side in timber sashes with subdivisions to match existing. Allow for Crown glass.





WINDOW NUMBER	01-181-W01
DESCRIPTION	Timber sash window.
REQUIRED ACTIONS	As above. Fit new secondary glazing to inner side in timber sashes with subdivisions to match existing. Allow for Crown glass.



WINDOW NUMBER	01-101-W01
DESCRIPTION	Steel Universal range single glazed window with horizontal pivoting opening lights.
REQUIRED ACTIONS	Strip down existing steel window and replace with new Corporate 2000 steel double glazed windows. Glass buildup to be 6mm clear float outer pane, 16mm argon-filled cavity and 6mm clear soft coat lowE inner pane (TBC). Opening lights to match existing but top hung.



WINDOW NUMBER	01-101-W02
DESCRIPTION	Steel Universal range single glazed window with horizontal pivoting opening lights.
REQUIRED ACTIONS	Strip down existing steel window and replace with new Corporate 2000 steel double glazed windows. Glass buildup to be 6mm clear float outer pane, 16mm argon-filled cavity and 6mm clear soft coat lowE inner pane (TBC). Opening lights to match existing but top hung.



WINDOW NUMBER	01-102-W01
DESCRIPTION	Steel Universal range single glazed window with horizontal pivoting opening lights.
REQUIRED ACTIONS	Strip down existing steel window and replace with new Corporate 2000 steel double glazed windows. Glass buildup to be 6mm clear float outer pane, 16mm argon-filled cavity and 6mm clear soft coat lowE inner pane (TBC). Opening lights to match existing but top hung.



WINDOW NUMBER	01-101-W01
DESCRIPTION	Steel Universal range single glazed window with horizontal pivoting opening lights.
REQUIRED ACTIONS	Strip down existing steel window and replace with new Corporate 2000 steel double glazed windows. Glass buildup to be 6mm clear float outer pane, 16mm argon-filled cavity and 6mm clear soft coat lowE inner pane (TBC). Opening lights to match existing but top hung.