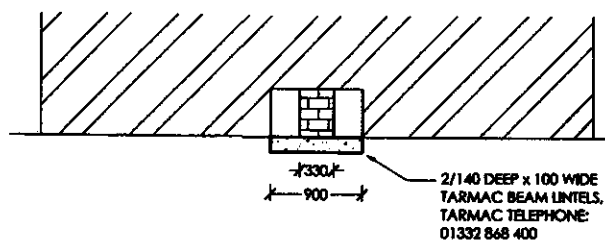


DO NOT SCALE THIS DRAWING

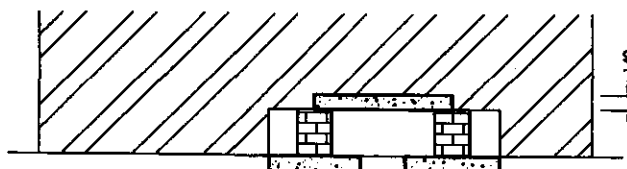
STEP ①

IN TURN CUT 900 WIDE OPENINGS, REDUCE THE WALL LEVEL AND INSERT 2 No 140 DEEP x 100 WIDE x 900 LONG TARMAC BEAM UNTELS INTO THE WALL LEVEL WITH THE FLOOR SLAB. BUILD A 330 LONG BY 225 THICK PIER FROM 50N BRICKS LAID IN 1:1:6 MORTAR.



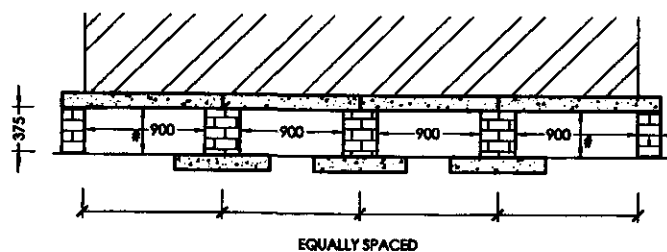
STEP ②

WITH TWO PIERS BUILT CUT OUT FOR 2 No. 140 DEEP x 100 WIDE BEAM UNTELS. DRY PACK OVER BEFORE FORMING SLOT.



STEP ③

REPEAT STEPS 1&2 UNTIL THE FOUR VENTILATION SLOTS HAVE BEEN FORMED. (NB. ONLY ONE SLOT TO BE FORMED AT A TIME).

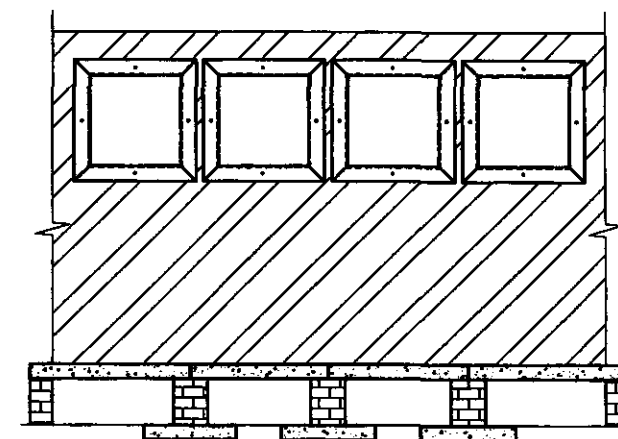


WALL TO BE TEMPORARILY PROPPED AT VULNERABLE STAGES OF CONSTRUCTION.

215mm ENDS OF ADJACENT WALLING TO BE REBUILT IN BONDED 50N BRICKS LAID IN 1:1:6 MORTAR.

NOTES:

1. READ IN CONJUNCTION WITH MECHANICAL ENGINEER'S DRAWINGS.
2. SET OUT TO SITE DIMENSIONS.
3. STEELWORK TO BE PAINTED WITH 2 COATS OF 'RUSTKILLER' PRIMER PAINT.
4. STEEL FRAMES TO BE FABRICATED WITH FULL PROFILE BUTT WELDS.



FINAL ELEVATION OF WALL

1:50

REF BM 04

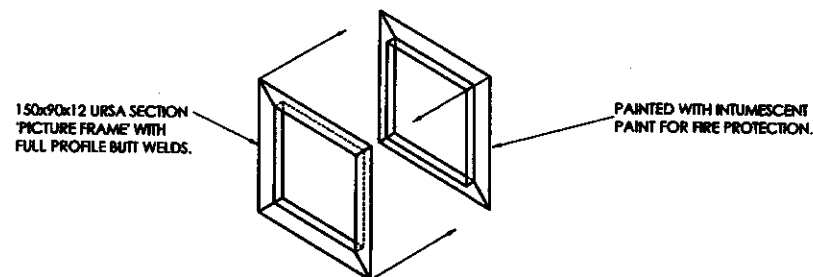
PHASE 1 - FORMATION OF LOW LEVEL VENTS

| | | | | | | | |
|--|---|--|--|-------------|--|------|--|
| project BRITISH MUSEUM IT ROOM | drawing title STEP BY STEP WALL ALTERATION INSTRUCTIONS PHASE 1 | rev | | description | | date | |
| | | date | | scale | | | |
| | | 12/02/2007 | | 1:50 | | | |
| | | job no. | | drg. no. | | rev | |
| | | 14642 | | 3/01 | | | |
| | | © COPYRIGHT | | | | | |
| | | <div><div><h2>Hockley & Dawson</h2><p>Consulting Engineers</p><p>Telephone 01483 - 548784 Facsimile 01483 - 286785 E-mail admin@hockleyanddawson.co.uk Internet www.hockleyanddawson.co.uk</p></div><div><p>Hockley & Dawson Consulting Engineers Limited The Great Barn Smithbrook Barns Cranleigh Surrey GU6 8LH</p></div></div> | | | | | |

DO NOT SCALE THIS DRAWING

NOTES:

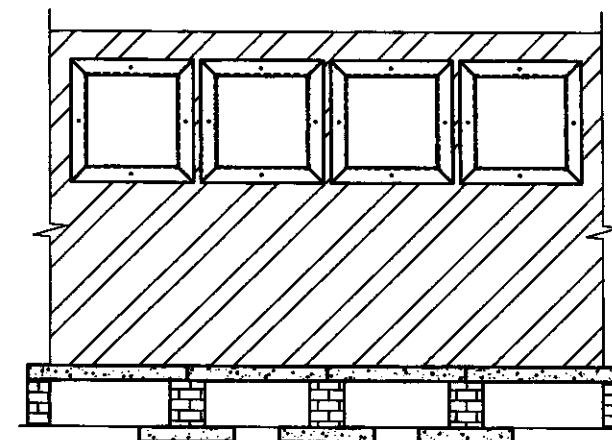
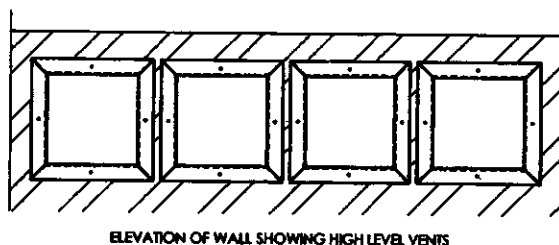
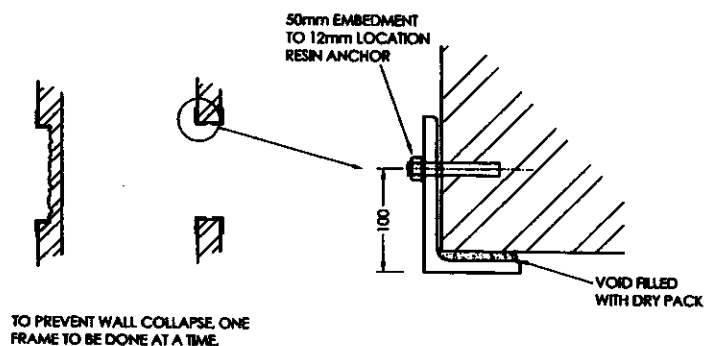
1. READ IN CONJUNCTION WITH MECHANICAL ENGINEER'S DRAWINGS.
2. SET OUT TO SITE DIMENSIONS.
3. STEELWORK TO BE PAINTED WITH 2 COATS OF 'RUSTKILLER' PRIMER PAINT.
4. STEEL FRAMES TO BE FABRICATED WITH FULL PROFILE BUTT WELDS.



STEP ①
PROP CONCRETE FLOORING OVER BEFORE COMMENCEMENT OF WORKS.

STEP ②
VENTILATION OPENING TO BE FORMED/COMPLETED ONE AT A TIME TO PREVENT OVERSTRESSING EXISTING WALL.

STEP ③
ANGLE FRAMES TO BE PREFABRICATED OFF SITE AND RESIN BOLTED TO WALL AT MID POINT OF TOP BOTTOM AND SIDES.



1:50

REF BMOS

PHASE 2 - FORMATION OF HIGH LEVEL VENTS

| | | | | | |
|--------------------------------------|---|------------------|------------------|-----|--------------------|
| project BRITISH MUSEUM IT ROOM | drawing title STEP BY STEP WALL ALTERATION INSTRUCTIONS PHASE 2 | rev | description | | date |
| | | date | 12/02/2007 | | scale 1:50, 1:5 |
| | | job no. 14642 | drg. no. 3/02 | rev | |
| | | © COPYRIGHT | | | |

Hockley & Dawson

Consulting Engineers

Telephone
01483 - 546784
Facsimile
01483 - 288785
E-mail
admin@hockleyanddawson.co.uk
Internet
www.hockleyanddawson.co.uk

Hockley & Dawson Consulting
Engineers Limited
The Great Barn
Smithbrook Barns
Cranleigh
Surrey
GU8 8LH