

- NOTES
1. COLUMN MOUNTED EMERGENCY LIGHTING (COOPER METROLITE) TO BE SUPPLIED FROM 'LINK' CONNECTOR IN FLOOR VOID, VIA NEAREST GROMMET.
  2. PUBLIC AREA LIGHTING CONTROLLED VIA WALL MOUNTED KEY SWITCH AT MAIN ENTRANCE AND THREE PHASE CONTACTOR PANEL MOUNTED ADJACENT DB/SE. SEE DRAWING No. 7003 FOR DETAILS. SWITCH TO BE ENGRAVED "PUBLIC LIGHTING".
  3. SHOWCASE LIGHTING CIRCUITS CONTROLLED VIA WALL MOUNTED KEY SWITCH AT MAIN ENTRANCE AND THREE PHASE CONTACTOR PANEL MOUNTED ADJACENT EACH DISTRIBUTION CENTRE (4No). SWITCH TO BE ENGRAVED "SHOW CASE".

LEGEND

- WALL MOUNTED LUMINAIRE
- RECESSED STAIR LUMINAIRE
- EMERGENCY LUMINAIRE
- LIGHT SWITCH
- 'K' DENOTES KEY OPERATED
- 'Xg' DENOTES NUMBER OF GANGS
- DENOTES VOICE ALARM

FOR CONTINUATION  
REFER TO DRAWING  
No. 6322-TGA-E-7006

T5 BATTEN TYPE LUMINAIRES TO BE MOUNTED IN TWO BUILDERSWORK PELMET TYPE DETAILS IN STAIR BALUSTRADES. THE ELECTRICAL CONTRACTOR SHALL INSTALL THE LUMINAIRES SO AS TO LEAVE SPACE FOR A SECOND ROW SHOULD THEY BE NECESSARY

5m COLUMN WITH 2No. COOPER METROLITE (NON MAINTAINED) AND 2No. COLUMN MOUNTED VOICE ALARM LOUDSPEAKERS

5m COLUMN WITH 2No. COOPER METROLITE (NON MAINTAINED) AND 2No. COLUMN MOUNTED VOICE ALARM LOUDSPEAKERS

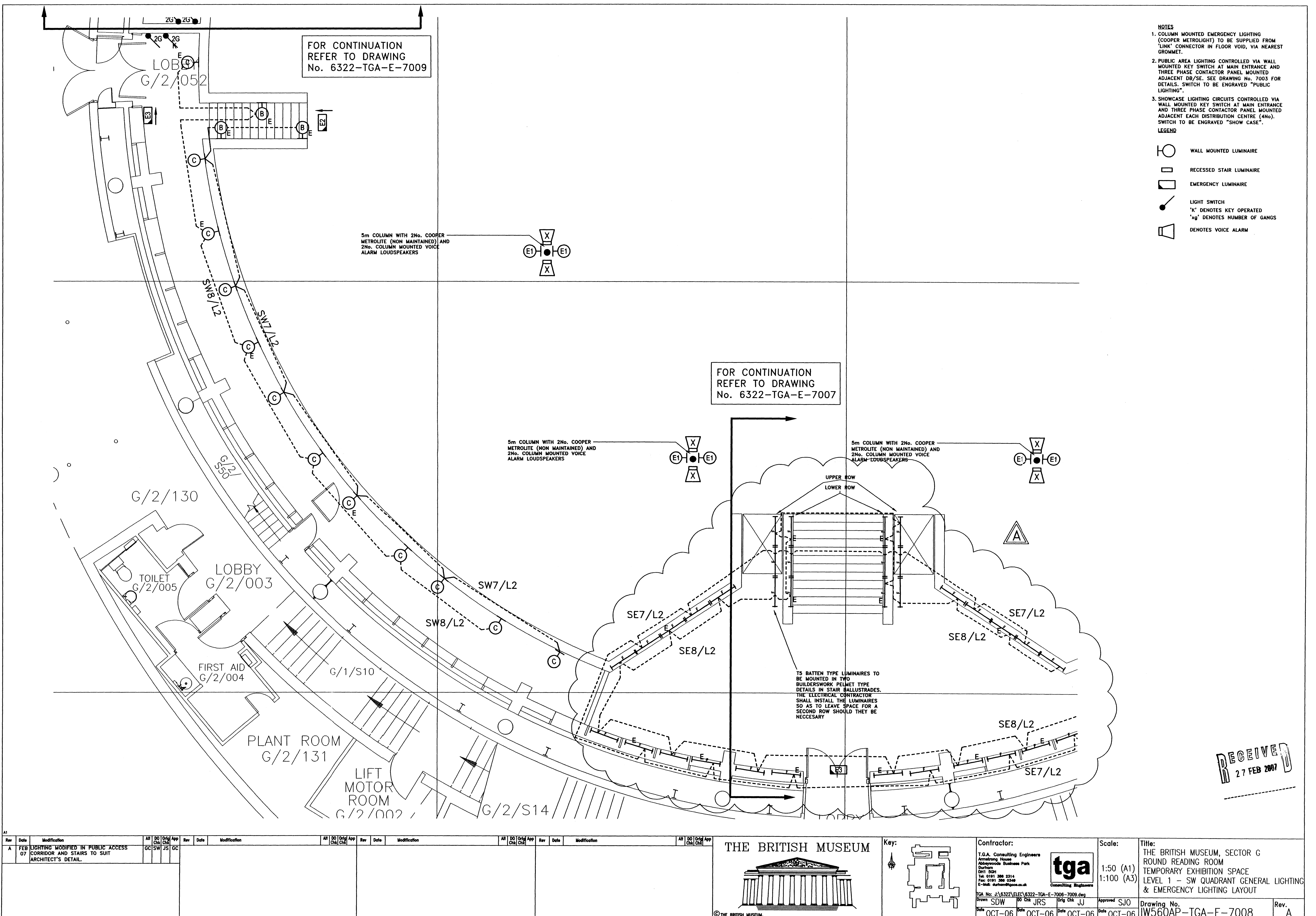
5m COLUMN WITH 2No. COOPER METROLITE (NON MAINTAINED) AND 2No. COLUMN MOUNTED VOICE ALARM LOUDSPEAKERS








FOR CONTINUATION  
REFER TO DRAWING  
No. 6322-TGA-E-7008

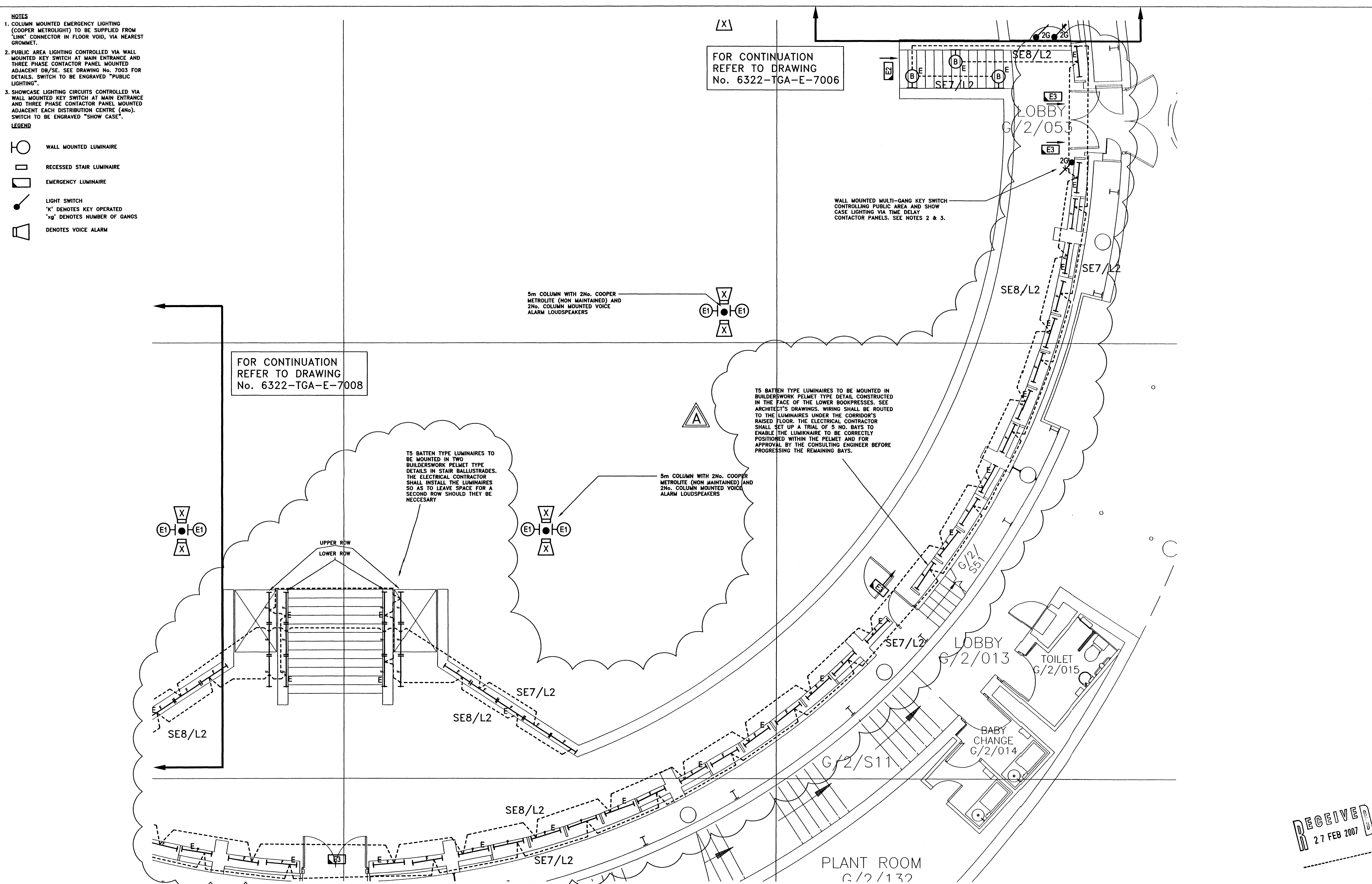
RECEIVED  
27 FEB 2007

Rev	Date	Modification	Alt	DO	Chk	App	Rev	Date	Modification	Alt	DO	Chk	App	Rev	Date	Modification	Alt	DO	Chk	App
A	FEB 07	LIGHTING MODIFIED IN PUBLIC ACCESS CORRIDOR AND STAIRS TO SUIT ARCHITECT'S DETAIL.	GC	SW	JS	GC														



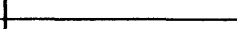
THE BRITISH MUSEUM		Key:	Contractor:	Scale:	Title:
			T.G.A. Consulting Engineers Amelung House Abbeywood Business Park Durham DH1 5DH Tel: 0191 386 2314 Fax: 0191 386 0548 E-mail: durham@tga.co.uk	1:50 (A1) 1:100 (A3)	THE BRITISH MUSEUM, SECTOR G ROUND READING ROOM TEMPORARY EXHIBITION SPACE LEVEL 1 - NW QUADRANT GENERAL LIGHTING & EMERGENCY LIGHTING LAYOUT
Drawing No. IW560AP-TGA-E-7009		Approved SJO		Rev. A	
Date OCT-06		Date OCT-06		Date OCT-06	



- LEGEND**
- |   |                              |
|---|------------------------------|
|  | WALL MOUNTED LUMINAIRE       |
|  | RECESSED STAIR LUMINAIRE     |
|  | EMERGENCY LUMINAIRE          |
|  | LIGHT SWITCH                 |
|  | 'K' DENOTES KEY OPERATED     |
|  | 'Xg' DENOTES NUMBER OF GANGS |
|  | DENOTES VOICE ALARM          |

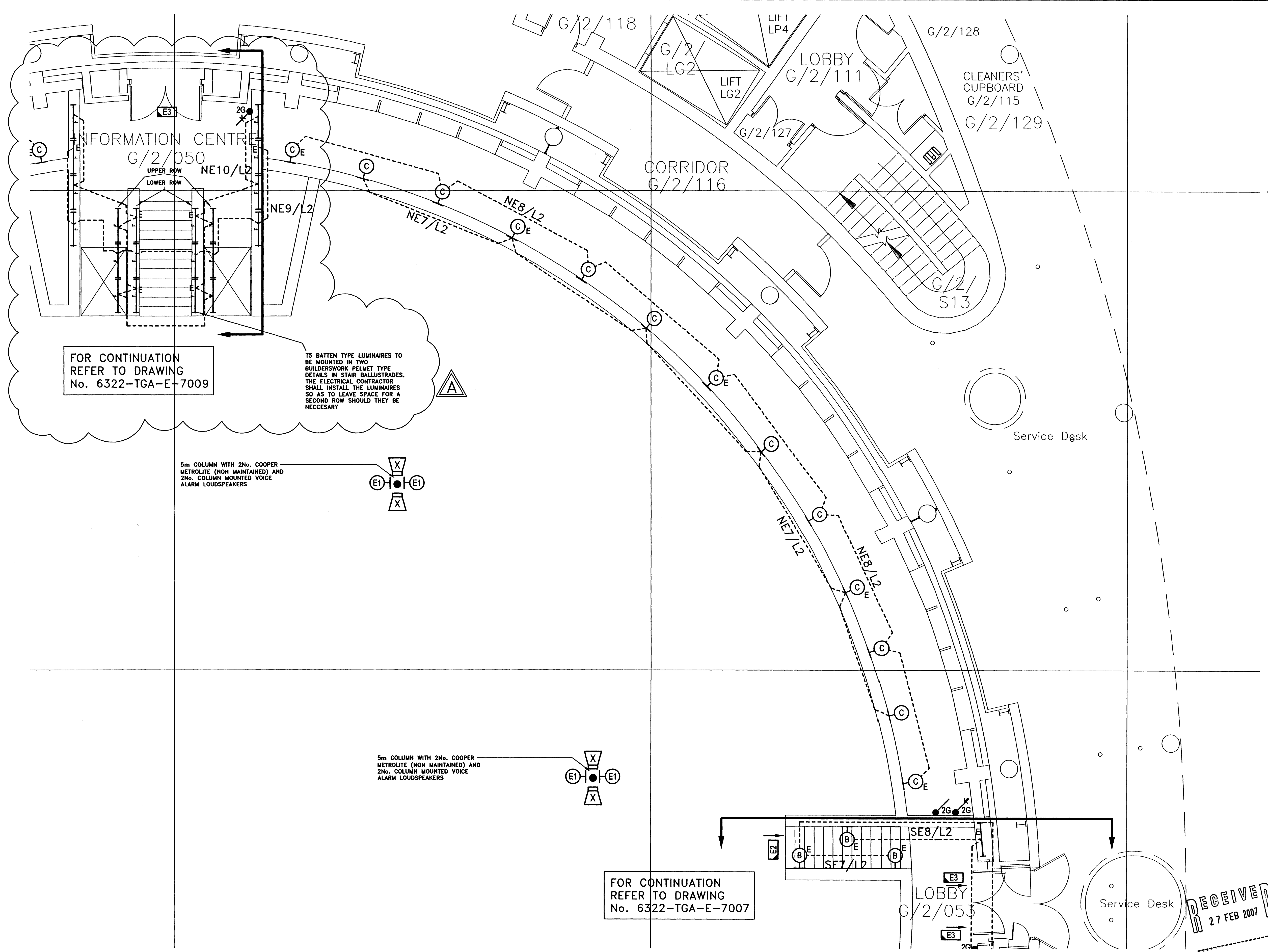
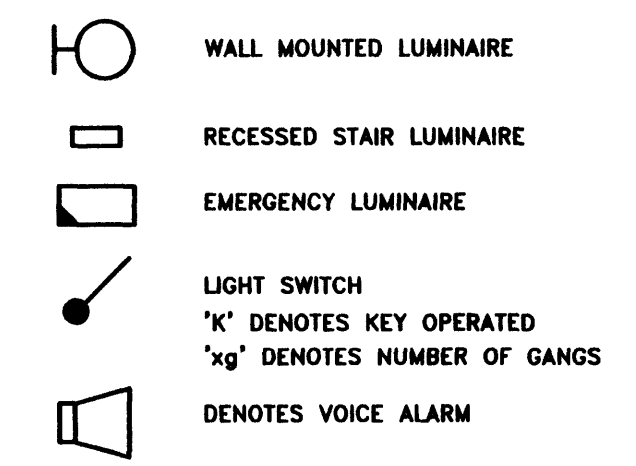


RECEIVED  
27 FEB 2007

Rev A	Date FEB 07	Modification <b>LIGHTING MODIFIED IN PUBLIC ACCESS CORRIDOR AND STAIRS TO SUIT ARCHITECT'S DETAIL.</b>	Air GC	DO SW	Orig JS	App GC	Rev Date Modification	Air DO	DO CHK	Orig CHK	App Rev Date Modification	Air DO	DO CHK	Orig CHK	App Rev Date Modification	Air DO	DO CHK	Orig CHK	App Rev Date Modification	<div style="text-align: center;"> <h1>THE BRITISH MUSEUM</h1>  <p>© THE BRITISH MUSEUM.</p> </div> <div style="float: right; width: 15%;"> <b>Key:</b>   </div> <div style="clear: both;"></div> <div style="margin-top: 10px;"> <b>Contractor:</b>            T.G.A. Consulting Engineers            Armstrong House            Abbeywoods Business Park            Durham            DH1 5QH            Tel: 0191 386 5314            Fax: 0191 386 0346            E-Mail: durham@tga.co.uk         </div> <div style="margin-top: 10px; text-align: center;">   <b>tga</b>            Consulting Engineers         </div> <div style="margin-top: 10px;"> <b>Scale:</b>            1:50 (A1)            1:100 (A3)         </div> <div style="margin-top: 10px;"> <b>Title:</b>            THE BRITISH MUSEUM, SECTOR G            ROUND READING ROOM            TEMPORARY EXHIBITION SPACE            LEVEL 1 – SE QUADRANT GENERAL LIGHTING            &amp; EMERGENCY LIGHTING LAYOUT         </div> <div style="margin-top: 10px;"> <b>TGA No:</b> J\6322\BEC-6322-TGA-E-7006-7009.dwg  <b>Drawn:</b> SDW    <b>DO CHK:</b> JRS    <b>Orig CHK:</b> JJ  <b>Date:</b> OCT-06    <b>Date:</b> OCT-06    <b>Date:</b> OCT-06  <b>Approved:</b> SJO  <b>Date:</b> OCT-06         </div> <div style="margin-top: 10px;"> <b>Drawing No.</b>            IW560AP-TGA-E-7007         </div> <div style="float: right; width: 10%;"> <b>Rev.</b>            A         </div>							
----------	----------------	---	-----------	----------	------------	-----------	-----------------------------	-----------	-----------	-------------	------------------------------------	-----------	-----------	-------------	------------------------------------	-----------	-----------	-------------	------------------------------------	--	--	--	--	--	--	--	--



- NOTES
1. COLUMN MOUNTED EMERGENCY LIGHTING (COOPER METROLITE) TO BE SUPPLIED FROM 'LINK' CONNECTOR IN FLOOR VOID, VIA NEAREST GROMMET.
  2. PUBLIC AREA LIGHTING CONTROLLED VIA WALL MOUNTED KEY SWITCH AT MAIN ENTRANCE AND THREE PHASE CONTACTOR PANEL MOUNTED ADJACENT DB/SE. SEE DRAWING No. 7003 FOR DETAILS. SWITCH TO BE ENGRAVED "PUBLIC LIGHTING".
  3. SHOWCASE LIGHTING CIRCUITS CONTROLLED VIA WALL MOUNTED KEY SWITCH AT MAIN ENTRANCE AND THREE PHASE CONTACTOR PANEL MOUNTED ADJACENT EACH DISTRIBUTION CENTRE (4No). SWITCH TO BE ENGRAVED "SHOW CASE".
- LEGEND



Rev				Date				Modification				Rev				Date				Modification				Rev				Date				Modification				Rev				Date				Modification			
A				FEB 07				LIGHTING MODIFIED IN PUBLIC ACCESS CORRIDOR AND STAIRS TO SUIT ARCHITECT'S DETAIL.				GC				SW				JS				GC																							

THE BRITISH MUSEUM

Key:

Contractor:

T.G.A. Consulting Engineers  
Armstrong House  
Abbey Road Business Park  
Durham  
DH1 5QH  
Tel: 0191 386 2314  
Fax: 0191 386 0340  
E-Mail: durham@tga.co.uk

**tga**  
Consulting Engineers

Scale:

1:50 (A1)  
1:100 (A3)

Title:

THE BRITISH MUSEUM, SECTOR G  
ROUND READING ROOM  
TEMPORARY EXHIBITION SPACE  
LEVEL 1 - NE QUADRANT GENERAL LIGHTING & EMERGENCY LIGHTING LAYOUT

Drawing No.

IW560AP-TGA-E-7006

Rev.

A

Date

OCT-06

Date

OCT-06

Date

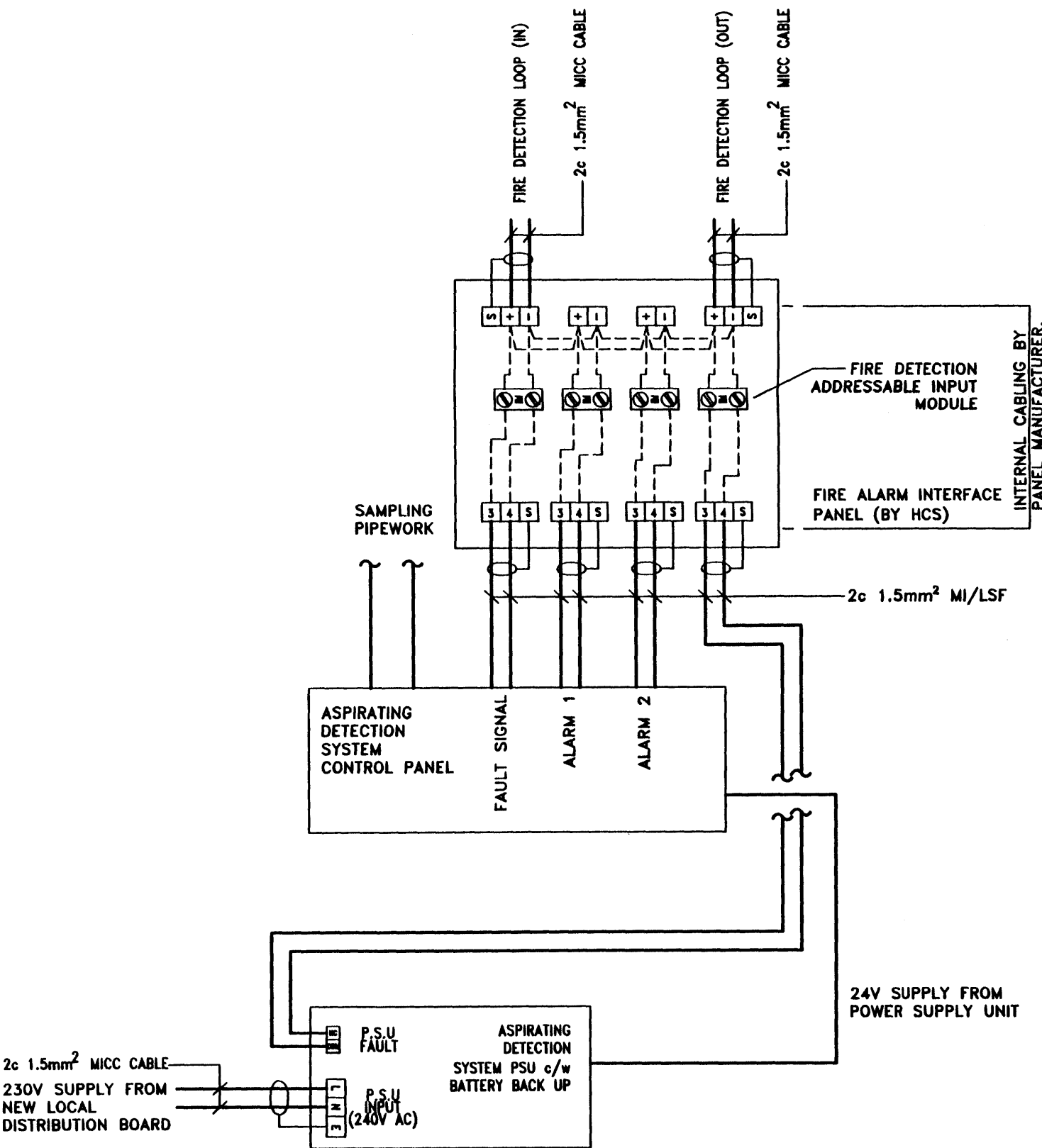
OCT-06

Date

OCT-06

- LEGEND**
- [FAP] SINGLE ZONE CONVENTIONAL FIRE ALARM PANEL
  - [ASP] MICRA-100 ASPIRATING CONTROL PANEL
  - [IF] MULTI WAY ADDRESSABLE INTERFACE
  - [PSU] POWER SUPPLY UNIT/BATTERY BACK UP FOR ASPIRATING SYSTEMS
  - [MF] MANUAL CALL POINT
  - XENON BEACON 24VDC
  - 'S1' DENOTES CIRCUIT No1
  - 'S2' DENOTES CIRCUIT No2
  - ASPIRATING (SAMPLING) PIPEWORK LOCATED IN 'FLOOR VOID'
  - SAMPLING 'HOLE' LOCATION.

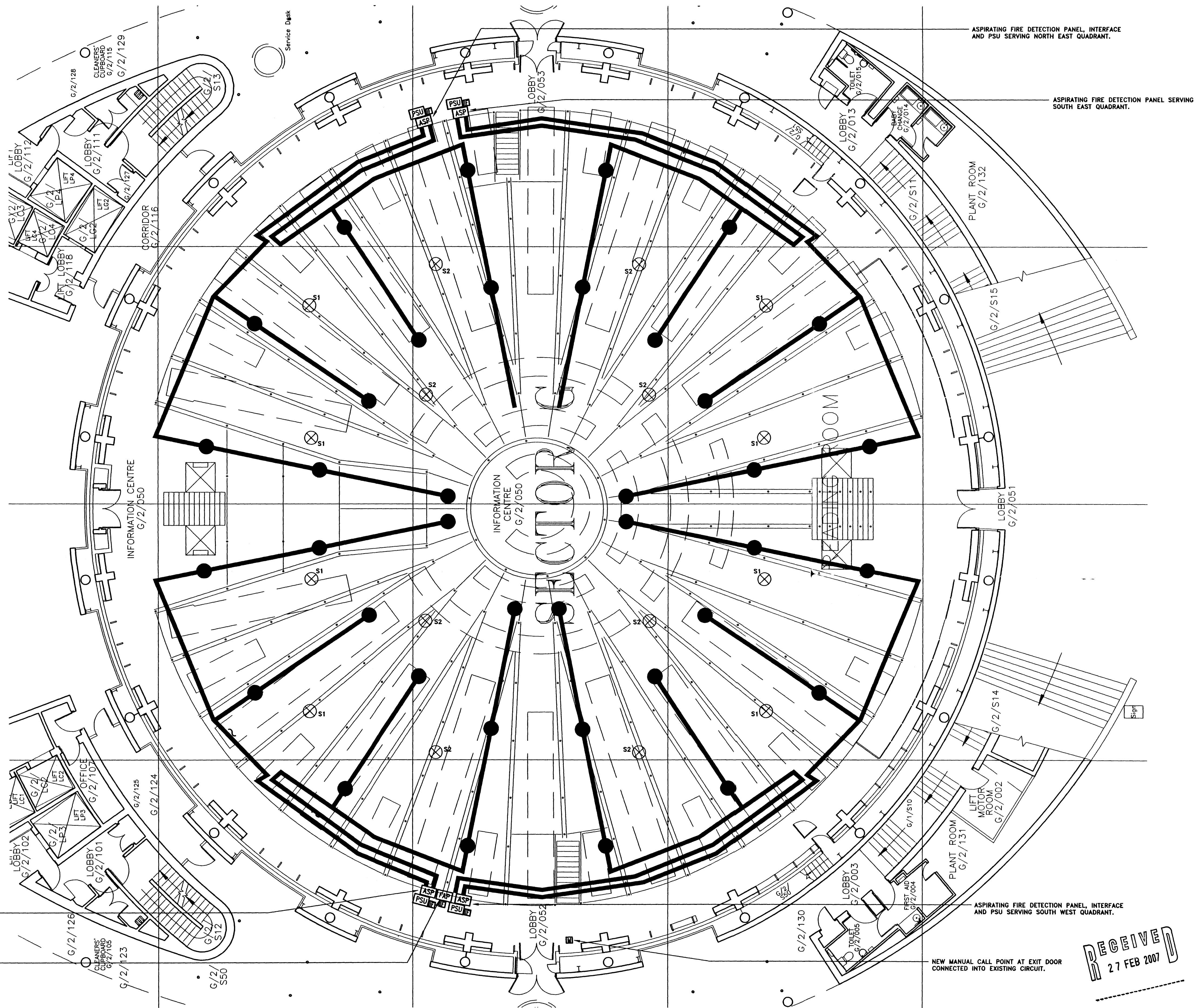
- NOTES:**
- EXACT ROUTES, POSITIONING AND MOUNTING DETAILS OF ASPIRATING PIPEWORK AND NUMBERS AND LOCATIONS OF AIR SAMPLING POINTS TO BE AGREED ON-SITE PRIOR TO INSTALLATION WITH SPECIALIST.
  - NEW SINGLE ZONE CONVENTIONAL FIRE ALARM PANEL TO BE PROVIDED TO SERVICE VOID AREA. NEW PANEL TO BE INTERFACED TO EXISTING FIRE DETECTION LOOP TO PROVIDE FIRE AND FAULT SIGNALLING IN THE EVENT OF ALARM. XENON BEACONS TO ACTIVATE NOTE THAT 'CLASS CHANGE' OUTPUT TO BE UTILISED FOR XENON INDICATOR CIRCUIT.



- NOTES:**
- REFER TO SPECIFICATION FOR FURTHER DETAILS.
  - STRATOS MICRA 100 ASPIRATING SMOKE DETECTION PANELS SHALL BE INSTALLED IN EACH QUADRANT, COMMISSIONED BY THE MANUFACTURER.
  - ALARM SIGNALS 1 AND 2 TO PROVIDE FIRST AND SECOND KNOCK RESPECTIVELY. ALARM SIGNAL 1 TO BE INITIALLY SET AT AN EARLY 'INCIDENT' STAGE OF ALARM (PROVIDING FIRST KNOCK I.E. 8 MINUTE SEARCH) AND ALARM 2 TO BE INITIALLY SET AT A LEVEL ABOVE THAT OF ALARM 1 (PROVIDING SECOND KNOCK I.E. EVACUATION). DETAILS TO BE CONFIRMED PRIOR TO COMMISSIONING.
  - PRE ALARM SHALL REMAIN SPARE.

ASPIRATING FIRE DETECTION PANEL, INTERFACE AND PSU SERVING NORTH WEST QUADRANT.

SINGLE ZONE FIRE ALARM PANEL AND INTERFACE PROVIDING ALARM SOUNDERS/BEACONS IN FLOOR VOID.



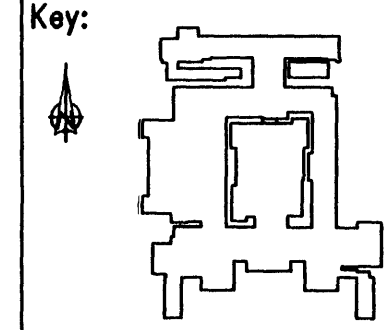
RECEIVED  
27 FEB 2007

Rev	Date	Modification	Rev	Date	Modification	Rev	Date	Modification	Rev	Date	Modification

THE BRITISH MUSEUM

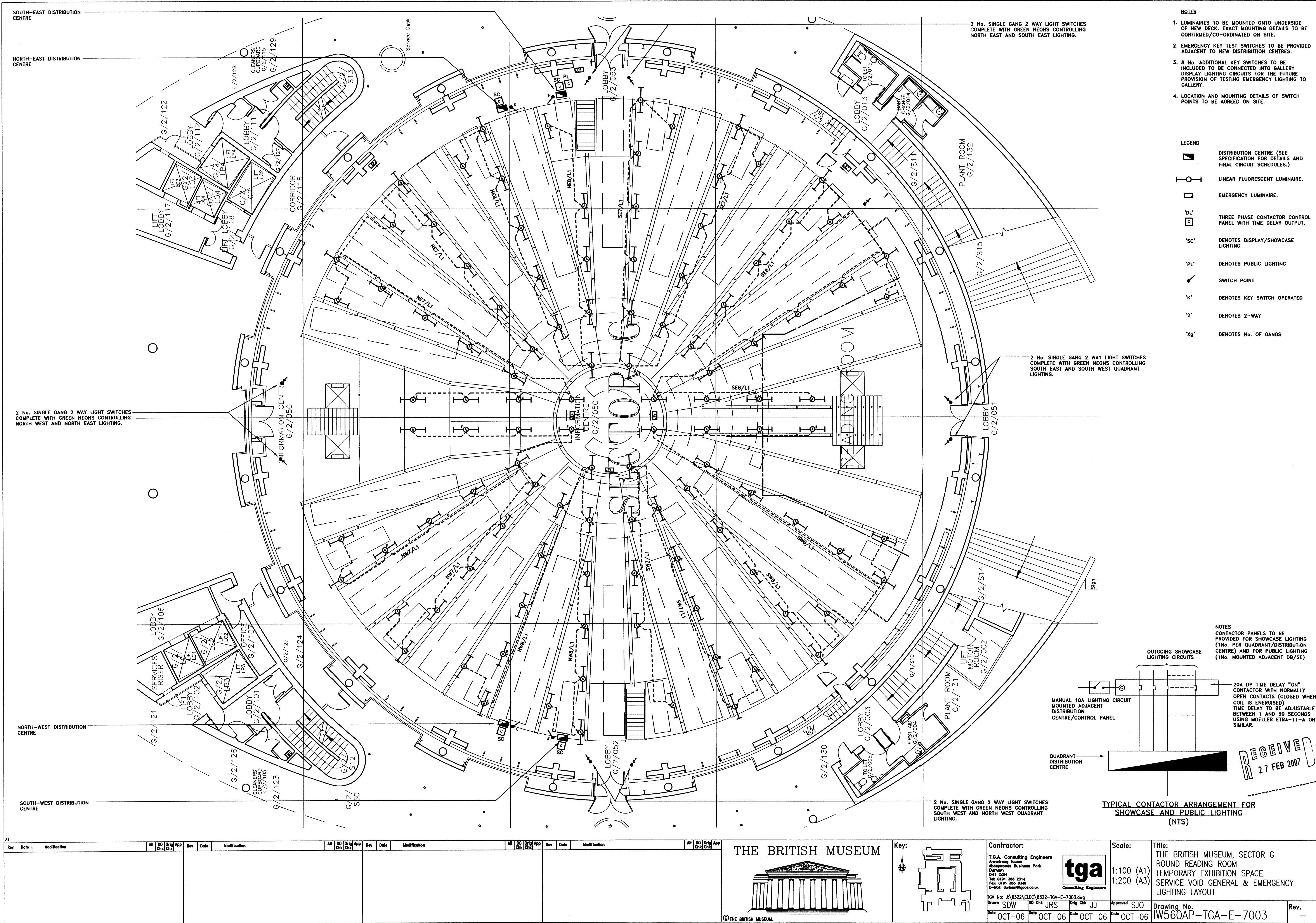


© THE BRITISH MUSEUM.



<b>Contractor:</b> T.G.A. Consulting Engineers Armstrong House Morpeth Road Business Park Durham DH1 5QH Tel: 0191 386 2314 Fax: 0191 386 0348 E-mail: d.gardner@tga.co.uk	<b>Scale:</b> 1:100 (A1) 1:200 (A3)	<b>Title:</b> THE BRITISH MUSEUM, SECTOR G ROUND READING ROOM TEMPORARY EXHIBITION SPACE SERVICE VOID FIRE DETECTION AND ALARM LAYOUT
<b>Rev.</b> —	<b>Rev.</b> —	<b>Rev.</b> —







SOUTH-EAST DISTRIBUTION CENTRE

POWER SUPPLY UNITS AND UN-SWITCHED FUSED CONNECTION UNITS FOR ASPIRATING FIRE DETECTION SYSTEMS IN NE & SE QUADRANTS

NORTH-EAST DISTRIBUTION CENTRE

EXISTING VENTILATION GRILLES IN DESK & VOID BELOW TO BE REMOVED TO ALLOW ACCESS FOR SUPPLY CABLING TO DISTRIBUTION & FIRE ALARM EQUIPMENT.

NORTH-WEST DISTRIBUTION CENTRE

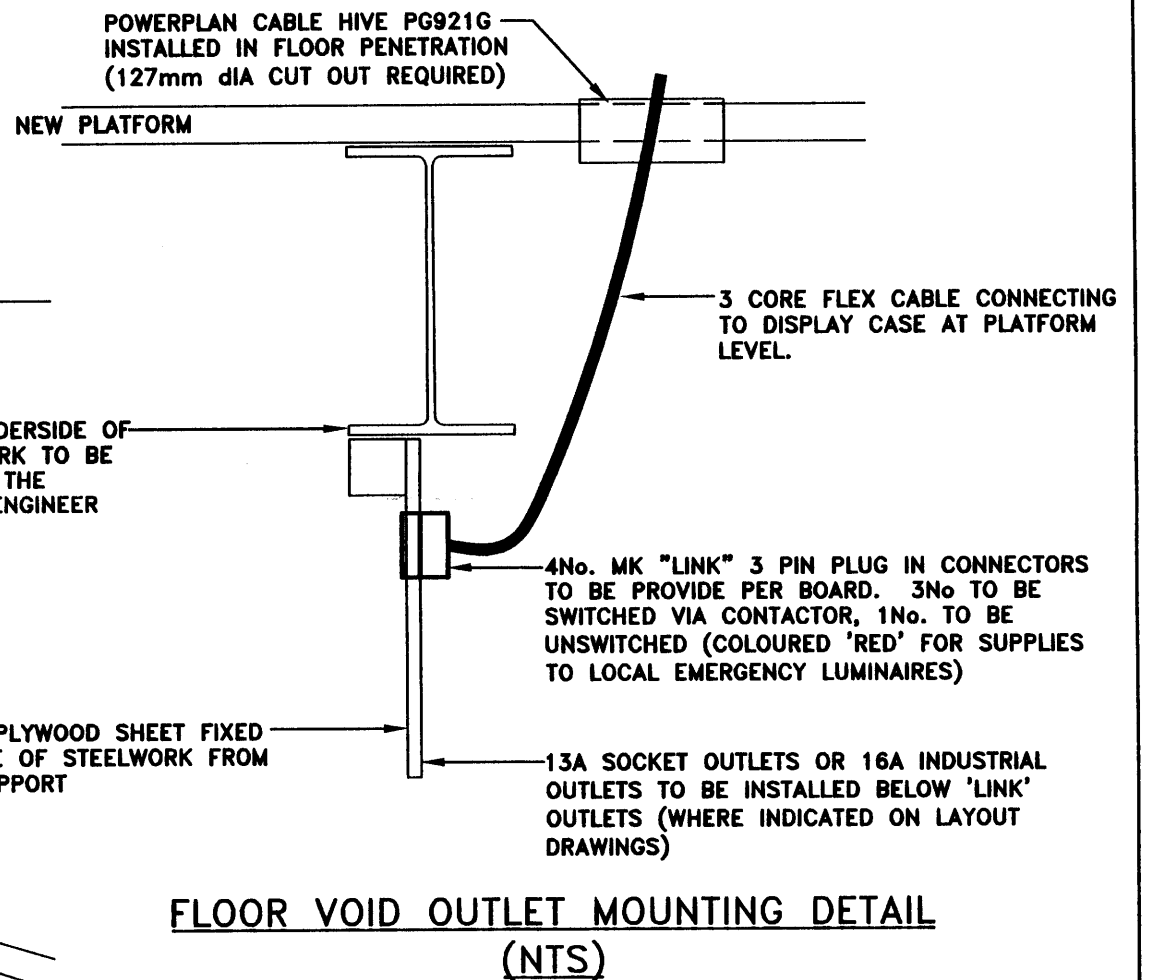
POWER SUPPLY UNITS AND UN-SWITCHED FUSED CONNECTION UNITS FOR ASPIRATING FIRE DETECTION SYSTEMS IN NE & SE QUADRANTS

SOUTH-WEST DISTRIBUTION CENTRE

LEGEND

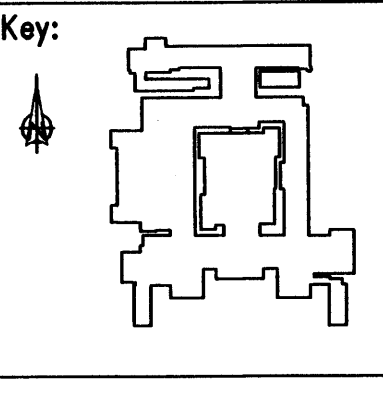
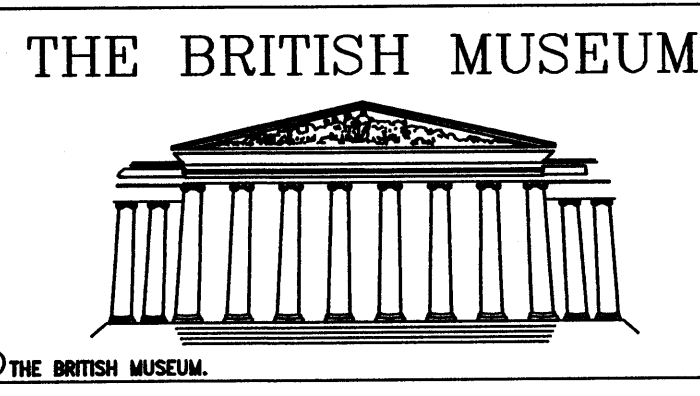
- DISTRIBUTION CENTRE
- 300mm BASKET TRAY WITH DIVIDERS
- 150mm BASKET TRAY WITH DIVIDERS
- 16A COMMANDO OUTLET IN FLOOR VOID
- 13A SOCKET OUTLET MOUNTED WITHIN GROMMET (POWERPLAN PH9250) WIRED FROM RING MAIN
- 1No. SOCKET OUTLET LOCATED WITHIN FLOOR VOID FOR SHOWCASE LIGHTING (REFER TO SPECIFICATION)
- 1No. SOCKET OUTLET LOCATED WITHIN FLOOR VOID FOR SHOWCASE POWER (REFER TO SPECIFICATION)
- 1No. 'LINK' OUTLETS IN FLOOR VOID ('N' DENOTES QUANTITY OF OUTLETS REQUIRED)
- POWERPLAN GROMMET LOCATION

- NOTES
- SEE SPECIFICATION FOR FINAL CIRCUIT SCHEDULES.
  - SEE SPECIFICATION FOR DETAILS OF SUB-MAIN CABLING TO DISTRIBUTION CENTRES.
  - SEE SPECIFICATION FOR DETAILS OF MECHANICAL SERVICES WIRING.



RECEIVED  
27 FEB 2007

Rev	Date	Modification	Rev	Date	Modification	Rev	Date	Modification	Rev	Date	Modification	Rev	Date	Modification



Contractor:  
T.G.A. Consulting Engineers  
Apollonia House  
Abbeywood Business Park  
Durham  
DH1 5GH  
Tel: 0191 386 5314  
Fax: 0191 386 5346  
E-Mail: durham@tga.co.uk

tga  
Consulting Engineers

TGA No: J:\6322\ELEC\6322-TGA-E-7002.dwg  
Drawn SDW DO Chk JRS Orig Chk JJ  
Date OCT-06 Date OCT-06 Date OCT-06

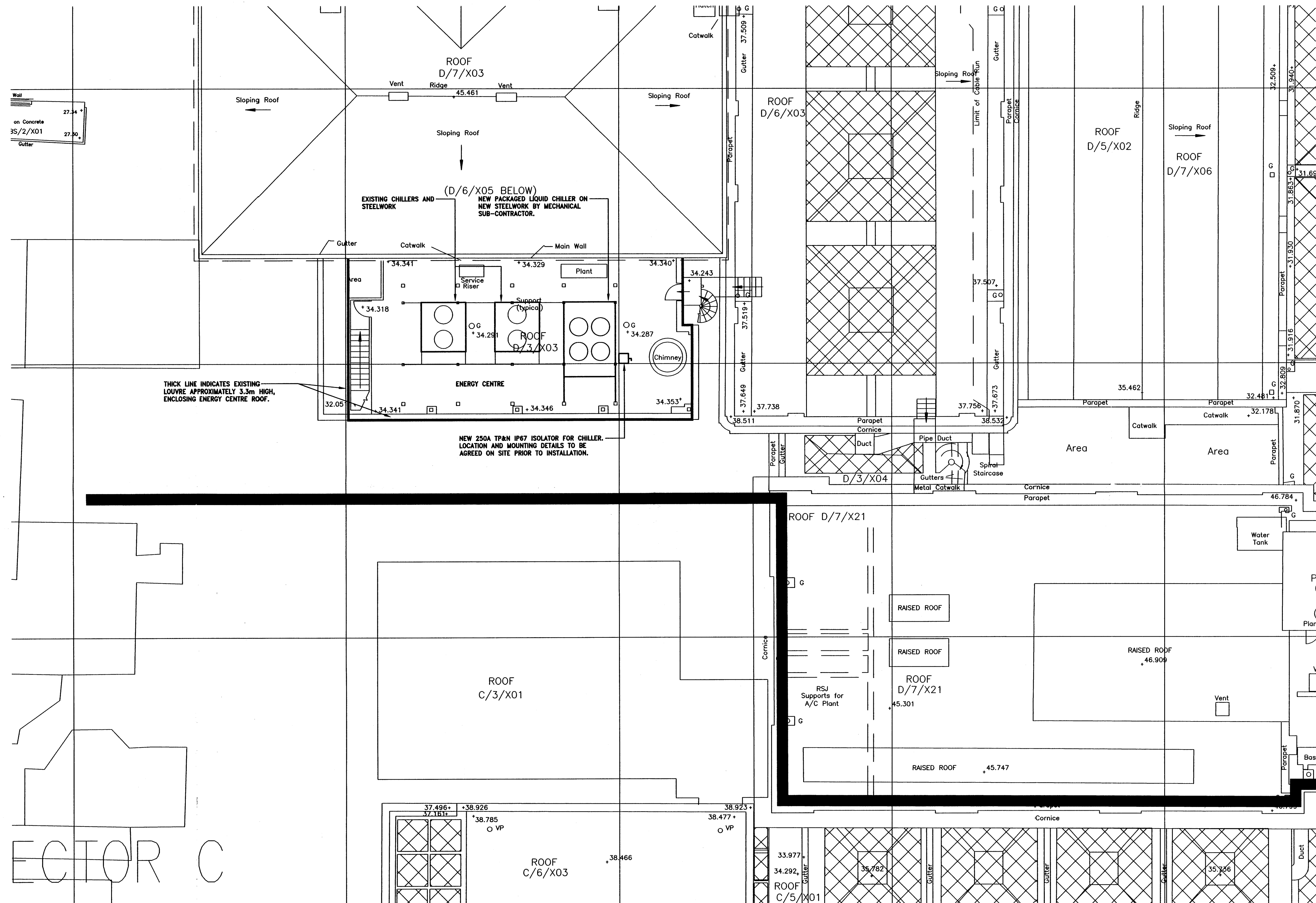
Scale:  
1:100 (A1)  
1:200 (A3)

Title:  
THE BRITISH MUSEUM, SECTOR G  
ROUND READING ROOM  
TEMPORARY EXHIBITION SPACE  
SERVICE VOID SMALL POWER LAYOUT

Drawing No.  
IW560AP-TGA-E-7002

Rev.  
—

- NOTES**
1. SEE MECHANICAL SERVICES DRAWINGS AND SPECIFICATION FOR FURTHER INFORMATION.
  2. NEW 4c 95mm<sup>2</sup> XLPE/SWA/LSF CABLE TO BE PROVIDED FROM EXISTING SECTOR C SWITCHBOARD. SEE SPECIFICATION FOR DETAILS.



ECTOR C

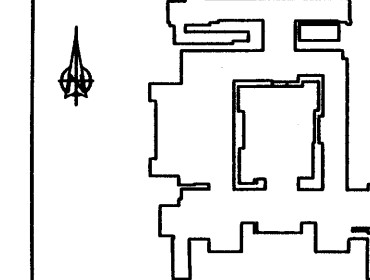
RECEIVED  
27 FEB 2007

Rev	Date	Modification	Rev	Date	Modification	Rev	Date	Modification	Rev	Date	Modification	Rev	Date	Modification	Rev	Date	Modification

THE BRITISH MUSEUM



Key:



Contractor:

T.G.A. Consulting Engineers  
Armstrong House  
Abbeyroads Business Park  
Durham  
DA1 5QH  
Tel: 0191 386 2314  
Fax: 0191 386 0348  
E-Mail: durham@tga.co.uk



Scale:

1:100 (A1)  
1:200 (A3)

Title:  
THE BRITISH MUSEUM, SECTOR C  
ENERGY CENTRE ROOF  
CHILLER INSTALLATION  
PLAN

TGA No: J-6322/ELEC/6322-TGA-E-7001.dwg  
Drawn SDW  
Date OCT-06  
100 Chk JRS  
Date OCT-06  
Orig Chk JJ  
Date OCT-06  
Approved SJO  
Date OCT-06

Drawing No.  
IW560AP-TGA-E-7001  
Rev. -