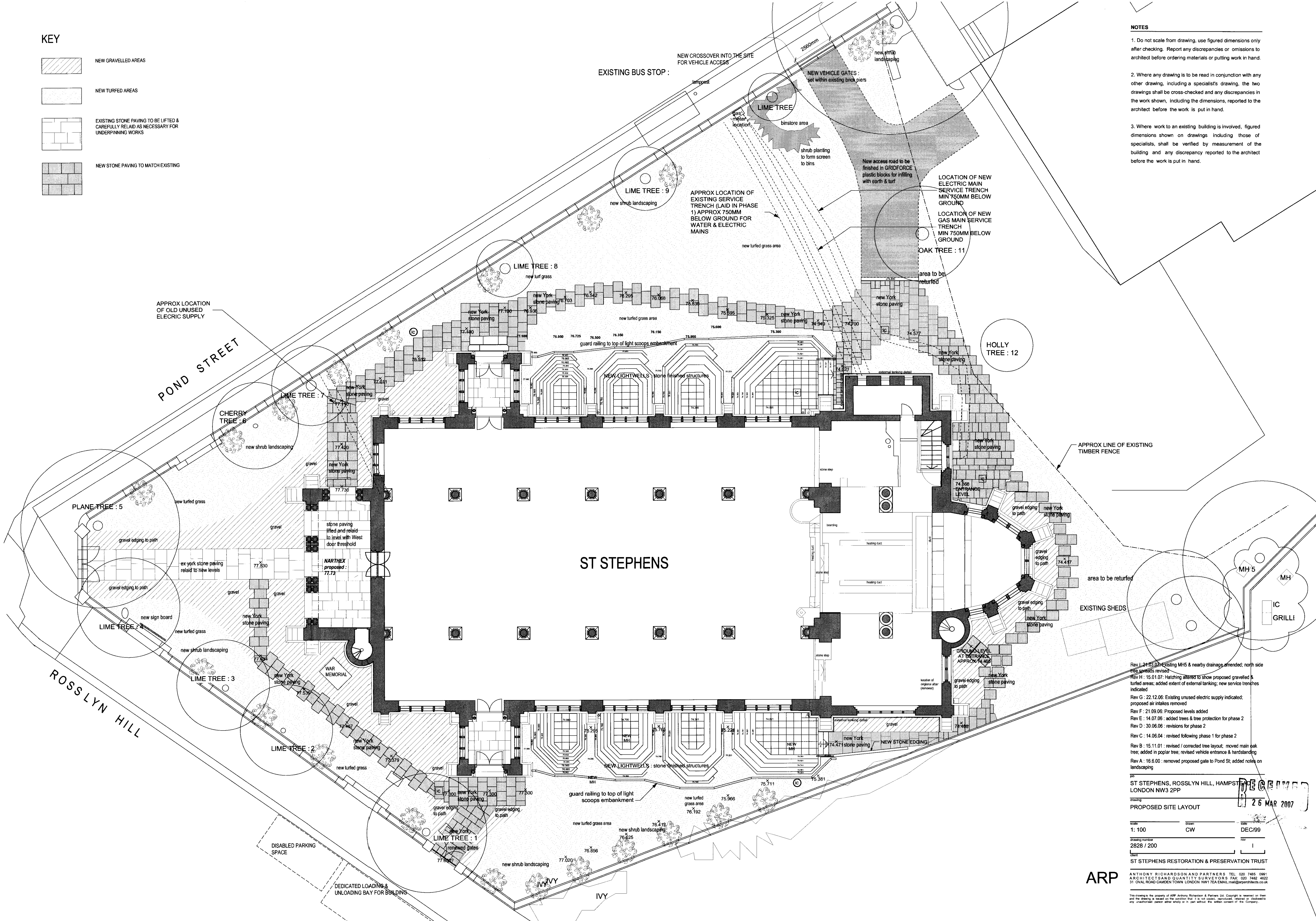


KEY

- NEW GRAVELLED AREAS
- NEW TURFED AREAS
- EXISTING STONE PAVING TO BE LIFTED & CAREFULLY RELAID AS NECESSARY FOR UNDERPINNING WORKS
- NEW STONE PAVING TO MATCH EXISTING

NOTES

1. Do not scale from drawing, use figured dimensions only after checking. Report any discrepancies or omissions to architect before ordering materials or putting work in hand.
2. Where any drawing is to be read in conjunction with any other drawing, including a specialist's drawing, the two drawings shall be cross-checked and any discrepancies in the work shown, including the dimensions, reported to the architect before the work is put in hand.
3. Where work to an existing building is involved, figured dimensions shown on drawings including those of specialists, shall be verified by measurement of the building and any discrepancy reported to the architect before the work is put in hand.

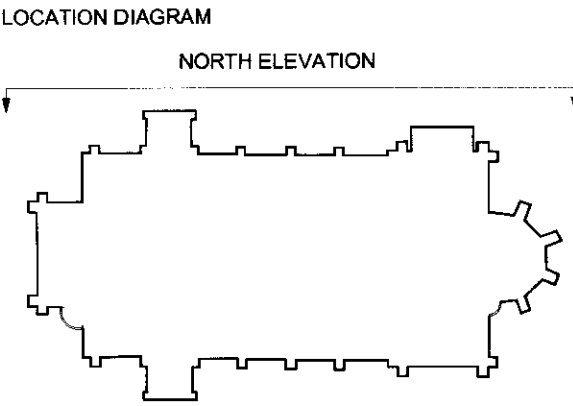
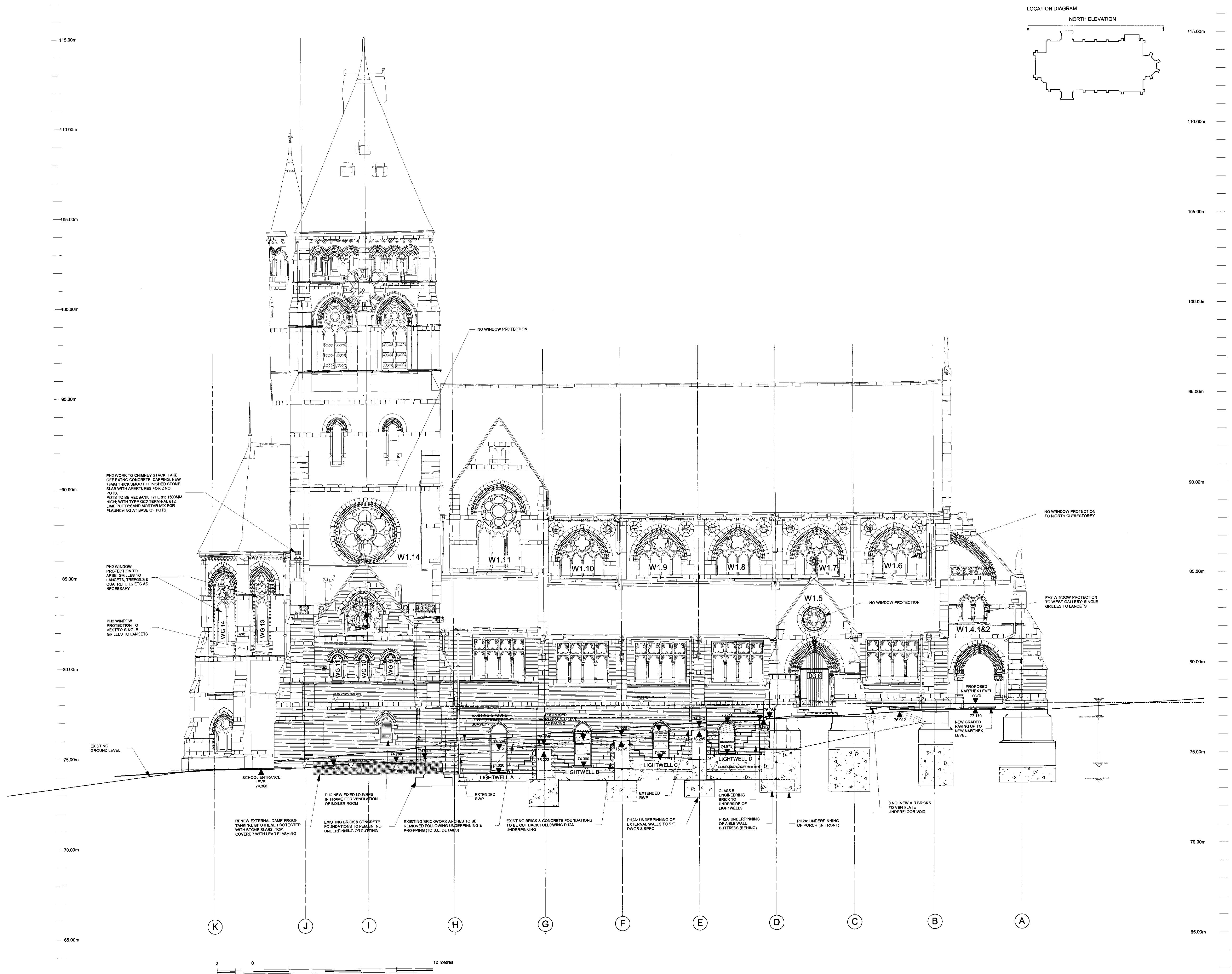


- Rev L : 24.03.05 Existing MH5 & nearby drainage amended; north side
Rev H : 15.01.07 Hatching altered to show proposed gravelled & turf areas; added extent of external tanking; new service trenches indicated
Rev G : 22.12.06 Existing unused electric supply indicated; proposed air intakes removed
Rev F : 21.09.06 Proposed levels added
Rev E : 14.07.06 added trees & tree protection for phase 2
Rev D : 30.06.06 : revisions for phase 2
Rev C : 14.06.04 : revised following phase 1 for phase 2
Rev B : 15.11.01 : revised / corrected tree layout; moved main oak tree; added in poplar tree; revised vehicle entrance & hardstanding
Rev A : 16.6.00 : removed proposed gate to Pond St; added notes on landscaping

ST STEPHENS, ROSSLYN HILL, HAMPSTEAD
LONDON NW3 2PP
Drawing number
2828 / 200
Client
ST STEPHENS RESTORATION & PRESERVATION TRUST
ANTHONY RICHARDSON AND PARTNERS TEL: 020 7485 0961
ARCHITECTS AND QUANTITY SURVEYORS FAX: 020 7482 4622
31 OVAL ROAD CAMDEN TOWN LONDON NW1 7EA EMAIL: mail@arponarchitects.co.uk

ARP

This drawing is the property of ARP Anthony Richardson & Partners Ltd. Copyright is reserved in this drawing and the drawing is issued on the condition that it is not copied, reproduced, altered or disclosed to any third party without the written consent of the Company.



- NOTES
1. Do not scale from drawing, use figured dimensions only after checking. Report any discrepancies or omissions to architect before ordering materials or putting work in hand.
 2. Where any drawing is to be read in conjunction with any other drawing, including a specialist's drawing, the two drawings shall be cross-checked and any discrepancies in the work shown, including the dimensions, reported to the architect before the work is put in hand.
 3. Where work to an existing building is involved, figured dimensions shown on drawings including those of specialists, shall be verified by measurement of the building and any discrepancy reported to the architect before the work is put in hand.

REV G	GENERAL REVISIONS: UNDERPINNING INDICATED; AIR INTAKE REMOVED	14/12/06
	DESIGN TEAM ISSUE	EP
Rev F	Air Intake revised	OCT 06
Rev E	Undercroft FFL revised	ELP 091006
Rev D	Lightwell levels revised	ELP 150906
Rev C : 30.06.06 : added construction details		
Rev B : 12.07.04 : added underpinning details		
Rev A : 3.8.00 : window mullions added		

ST STEPHENS, ROSSLYN HILL, LONDON NW3

26 MAR 2007

scale 1:100

Dec 99

Drawing number 2828 / 212

rev G

ST STEPHENS RESTORATION & PRESERVATION TRUST

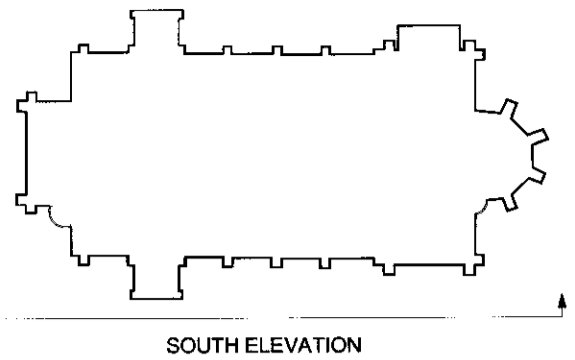
ANTHONY RICHARDSON AND PARTNERS TEL 020 7485 0991 ARCHITECTS AND QUANTITY SURVEYORS FAX 020 7482 4622 31 OVAL ROAD CAMDEN TOWN LONDON NW1 7EA EMAIL: info@arpartners.co.uk

ARP

This drawing is the property of ARP Anthony Richardson & Partners Ltd. Copyright is reserved on it and the drawing is issued on the condition that it is not copied, reproduced, retained or disclosed to any unauthorised person either wholly or in part without the written consent of the Company.

DATUM 60.00m A.O.D.

LOCATION DIAGRAM



SOUTH ELEVATION

NO WINDOW
PROTECTION TO SOUTH
CLERESTORYNO WINDOW
PROTECTIONPH2 WINDOW
PROTECTION TO WEST
GALLERY: SINGLE
GRILLE TO LANCETPH2 WINDOW
PROTECTION TO WEST
STAIR TURRET: SINGLE
GRILLES TO LANCETSNEW PAVING LEVEL
APPROX
77.835NARTHEX
PROPOSED LEVEL
77.731EXISTING GROUND
LEVEL (FROM EH
SURVEY)

77.813

77.835

77.837

77.839

77.841

77.843

77.845

77.847

77.849

77.851

77.853

77.855

77.857

77.859

77.861

77.863

77.865

77.867

77.869

77.871

77.873

77.875

77.877

77.879

77.881

77.883

77.885

77.887

77.889

77.891

77.893

77.895

77.897

77.899

77.901

77.903

77.905

77.907

77.909

77.911

77.913

77.915

77.917

77.919

77.921

77.923

77.925

77.927

77.929

77.931

77.933

77.935

77.937

77.939

77.941

77.943

77.945

77.947

77.949

77.951

77.953

77.955

77.957

77.959

77.961

77.963

77.965

77.967

77.969

77.971

77.973

77.975

77.977

77.979

77.981

77.983

77.985

77.987

77.989

77.991

77.993

77.995

77.997

77.999

78.001

78.003

78.005

78.007

78.009

78.011

78.013

78.015

78.017

78.019

78.021

78.023

78.025

78.027

78.029

78.031

78.033

78.035

78.037

78.039

78.041

78.043

78.045

78.047

78.049

78.051

78.053

78.055

78.057

78.059

78.061

78.063

78.065

78.067

78.069

78.071

78.073

78.075

78.077

78.079

78.081

78.083

78.085

78.087

78.089

78.091

78.093

78.095

78.097

78.099

78.101

78.103

78.105

78.107

78.109

78.111

78.113

78.115

78.117

78.119

78.121

78.123

78.125

78.127

78.129

78.131

78.133

78.135

78.137

78.139

78.141

78.143

78.145

78.147

78.149

78.151

78.153

78.155

78.157

78.159

78.161

78.163

78.165

78.167

78.169

78.171

78.173

78.175

78.177

78.179

78.181

78.183

78.185

78.187

78.189

78.191

78.193

78.195

78.197

78.199

78.201

78.203

78.205

78.207

78.209

78.211

78.213

78.215

78.217

78.219

78.221

78.223

78.225

78.227

78.229

78.231

78.233

78.235

78.237

78.239

78.241

78.243

78.245

78.247

78.249

78.251

78.253

78.255

78.257

78.259

78.261

78.263

78.265

78.267

78.269

78.271

78.273

78.275

78.277

78.279

78.281

78.283

78.285

78.287

78.289

78.291

78.293

78.295

78.297

78.299

78.301

78.303

78.305

78.307

78.309

78.311

78.313

78.315

78.317

78.319

78.321

78.323

78.325

78.327

78.329

78.331

78.333

78.335

78.337

78.339

78.341

78.343

78.345

78.347

78.349

78.351

78.353

78.355

78.357

78.359

78.361

78.363

78.365

78.367

78.369

78.371

78.373

78.375

78.377

78.379

78.381

78.383

78.385

78.387

78.389

78.391

78.393

78.395

78.397

78.399

78.401

78.403

78.405

78.407

78.409

78.411

78.413

78.415

78.417

78.419

78.421

78.423

78.425

78.427

78.429

78.431

78.433

78.435

78.437

78.439

78.441

78.443

78.445

78.447

78.449

78.451

78.453

78.455

78.457

78.459

78.461

78.463

78.465

78.467

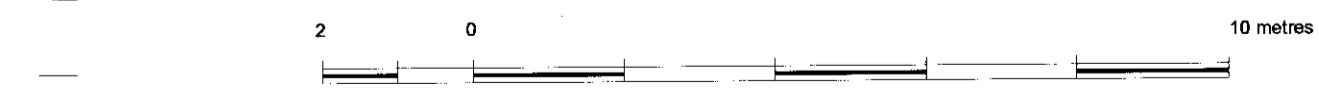
78.469

78.471

78.473

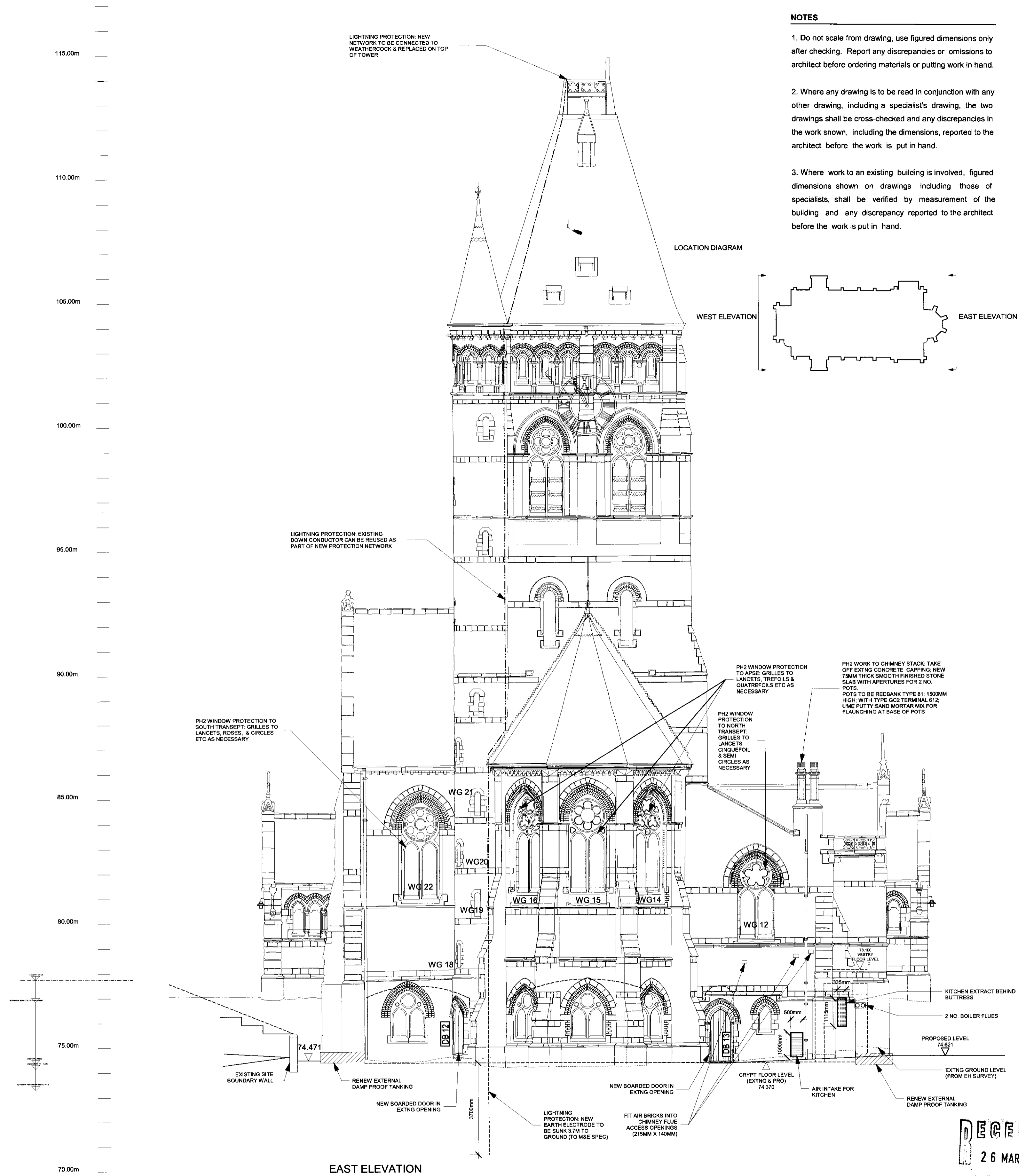
78.475

78.477



WEST ELEVATION

DATUM 60.00m A.O.D.



EAST ELEVATION

REV E	Kitchen air supply	cw 05/02/07
REV D	General Revisions to Ph2 Work	ELP 14/12/06
REV C	Undercroft FFL revised	ELP 091006
Rev B : 30.06.06 : revisions & additions		
Rev A : 12.07.04 : added rebuilt chimney stack on east end; added underpinning proposals		

NOTES

1. Do not scale from drawing, use figured dimensions only after checking. Report any discrepancies or omissions to architect before ordering materials or putting work in hand.
2. Where any drawing is to be read in conjunction with any other drawing, including a specialist's drawing, the two drawings shall be cross-checked and any discrepancies in the work shown, including the dimensions, reported to the architect before the work is put in hand.
3. Where work to an existing building is involved, figured dimensions shown on drawings including those of specialists, shall be verified by measurement of the building and any discrepancy reported to the architect before the work is put in hand.

ST STEPHENS, ROSSLYN HILL, HAMPSTEAD
LONDON NW3 2PP

**EAST & WEST ELEVATIONS
PROPOSED WORKS**

scale	drawn	date
1: 100 @ A1	CW	AUG/0

ST STEPHENS RESTORATION & PRESERVATION TRUST

ARP

This drawing is the property of ARP Anthony Richardson & Partners Ltd. Copyright is reserved on them and the drawing is issued on the condition that it is not copied, reproduced, retained or disclosed to any unauthorised person either wholly or in part without the written consent of the Company.