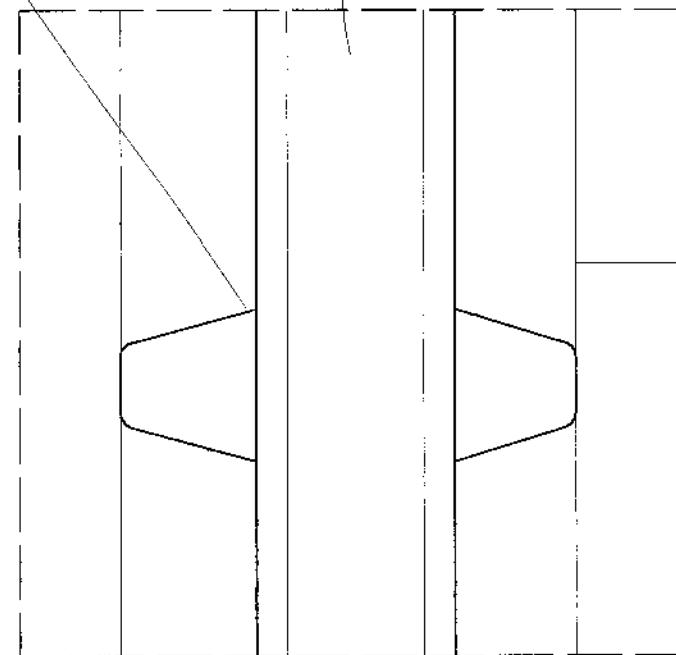


- Glazing continuous through mullion to make slender profile of mullion possible and to provide better thermal integrity.

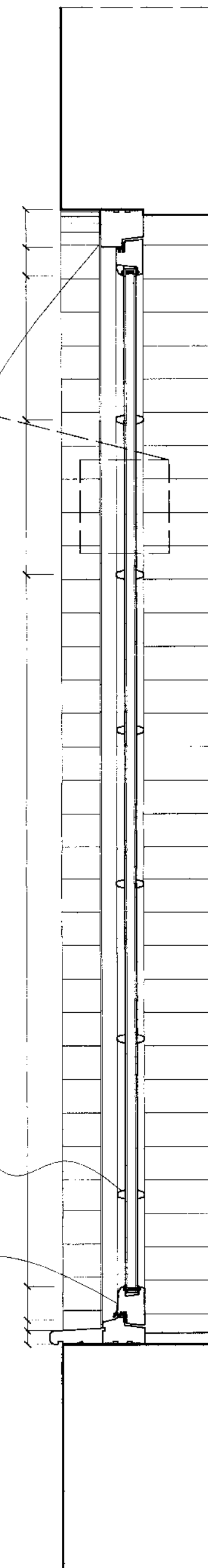
- Timber mullion adheared to glass with adhesive as recommended by window manufacturer, painted white.



1:1 section through window mullion

- Dimensions of window to match original window opening, to be confirmed on site.

- High quality timber window and sill with laminated frame and sash.



1:10 elevation of new window and surrounding brickwork

1:10 window section

DO NOT SCALE OFF THIS DRAWING
ALL DIMENSIONS MUST BE CHECKED ON SITE
INFORM THE ARCHITECT OF ANY DISCREPANCIES PRIOR TO CONSTRUCTION
PLOT SIZE: A2

N.B.
- Final window design subject to input by specialist window manufacturer.
- Window design similar to existng windows, ref. 011
- Dimensions to match original window opening -To be confirmed on site.

PETER BARBER
ARCHITECTS

173 Kings Cross Road LONDON WC1X 9BZ
T:020 7833 4499 F:020 7833 4999
e:architecture@peterbarberarchitects.com

JOB: Endell Street Hostel

CLIENT: St Mungo's

SCALE: See dwg

DATE: 16 06 06

DRAWN: PH

CHECKED: PB

TITLE: NEW WINDOW DETAILS

DRAWING NO: 052_D_30

REV. .

ISSUED FOR PLANNING