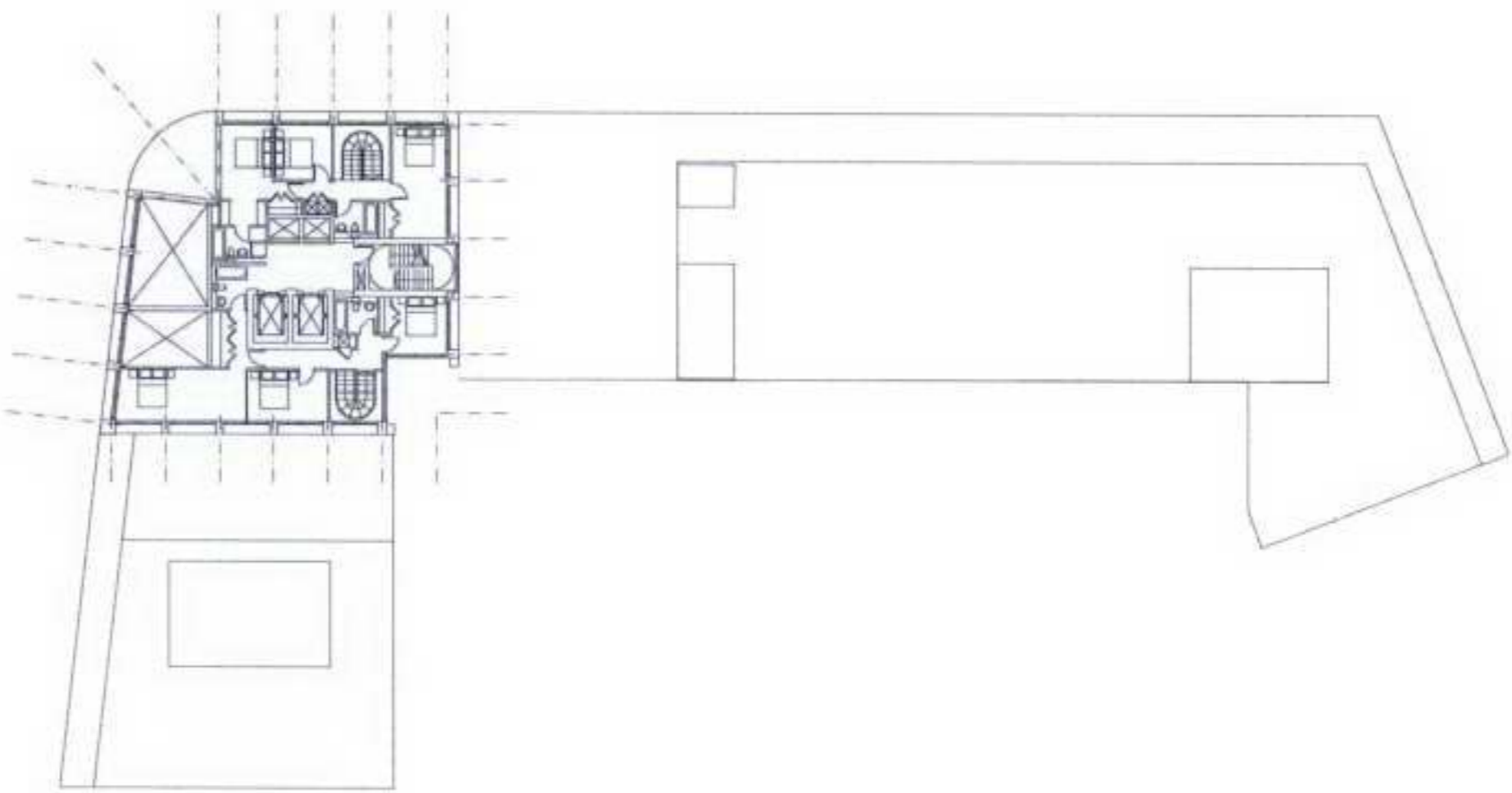
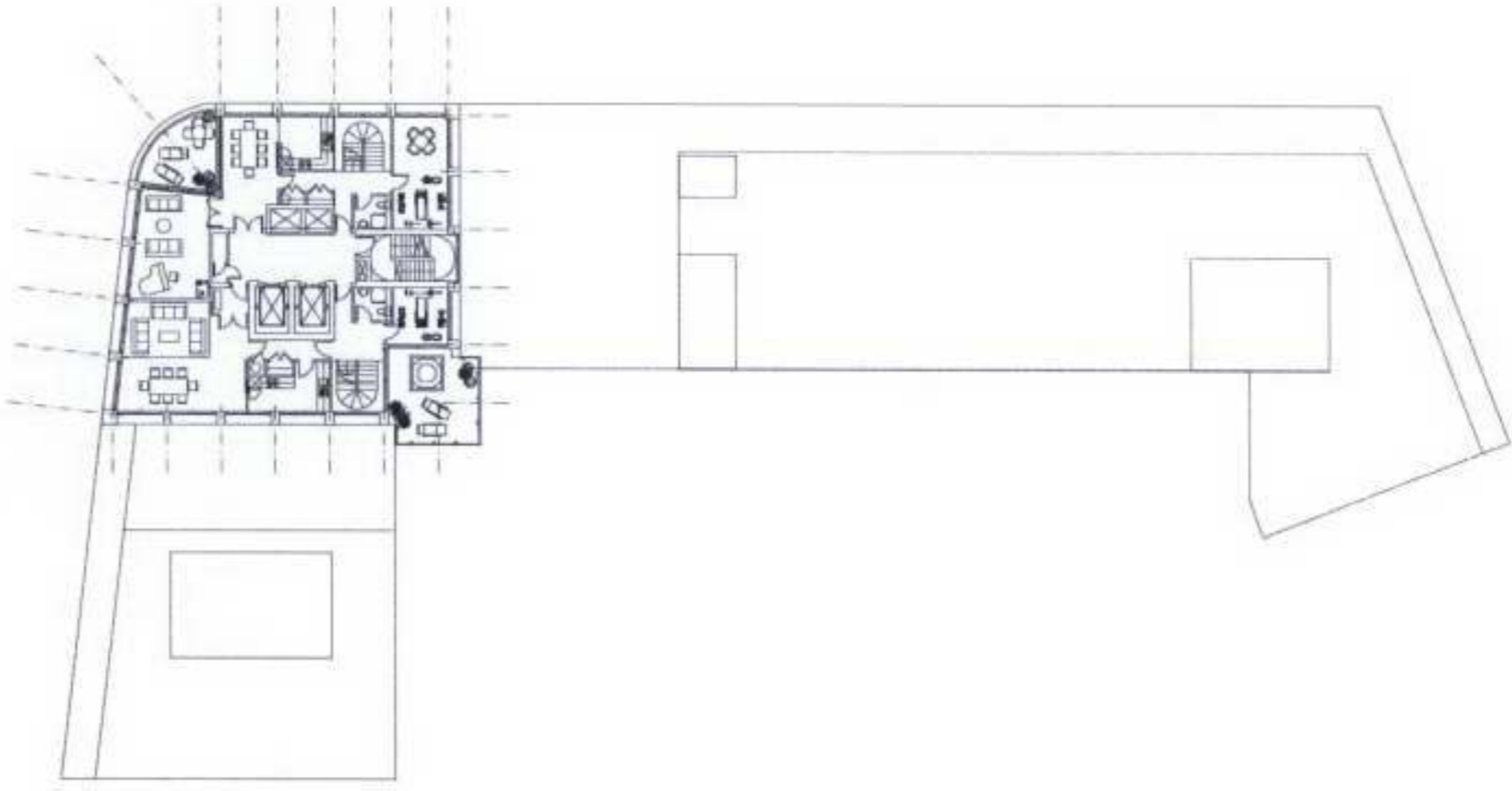


Consented Planning Scheme Drawing

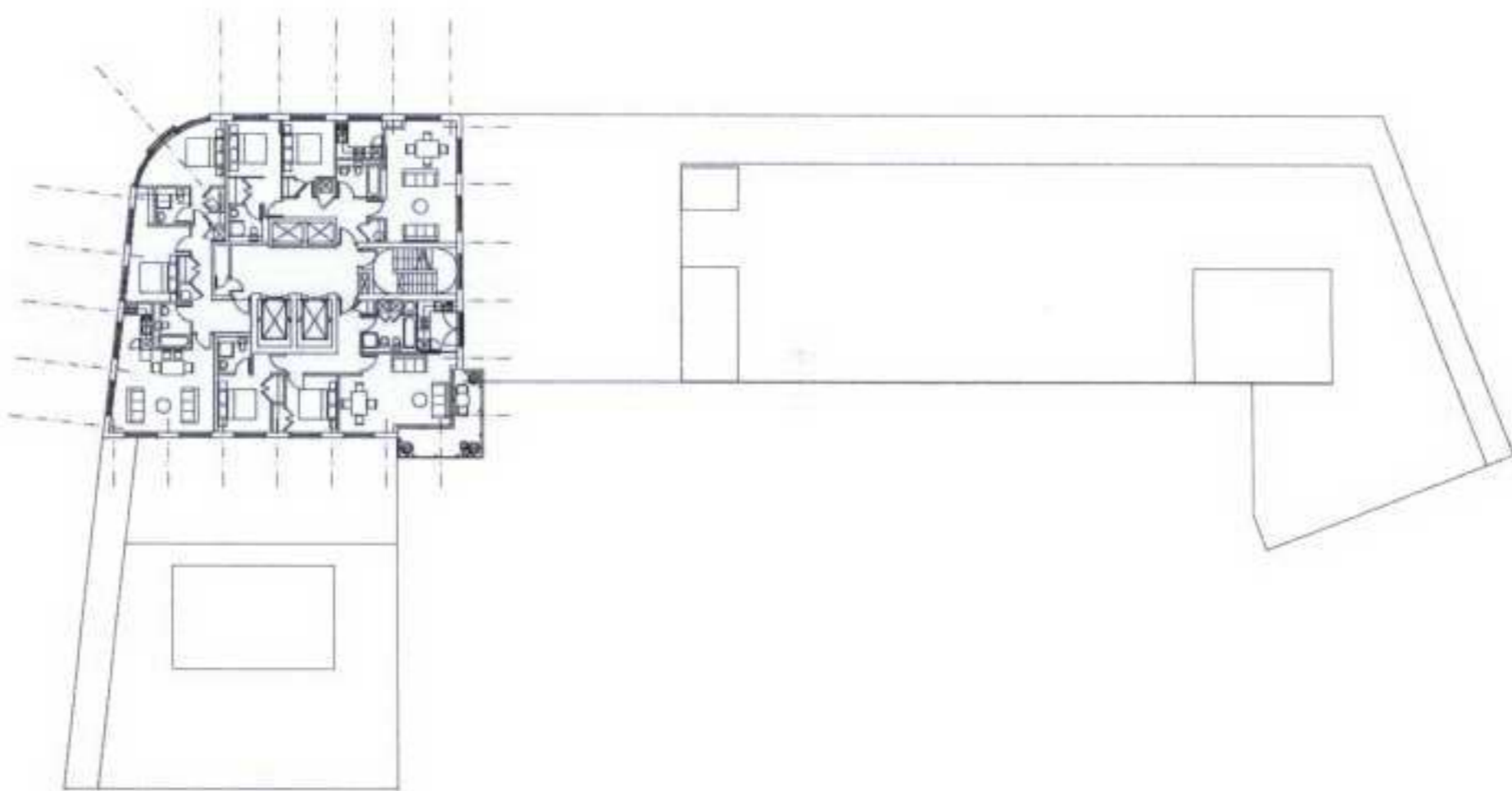
TRINITY MEWS
19th Floor



TRINITY MEWS
18th Floor

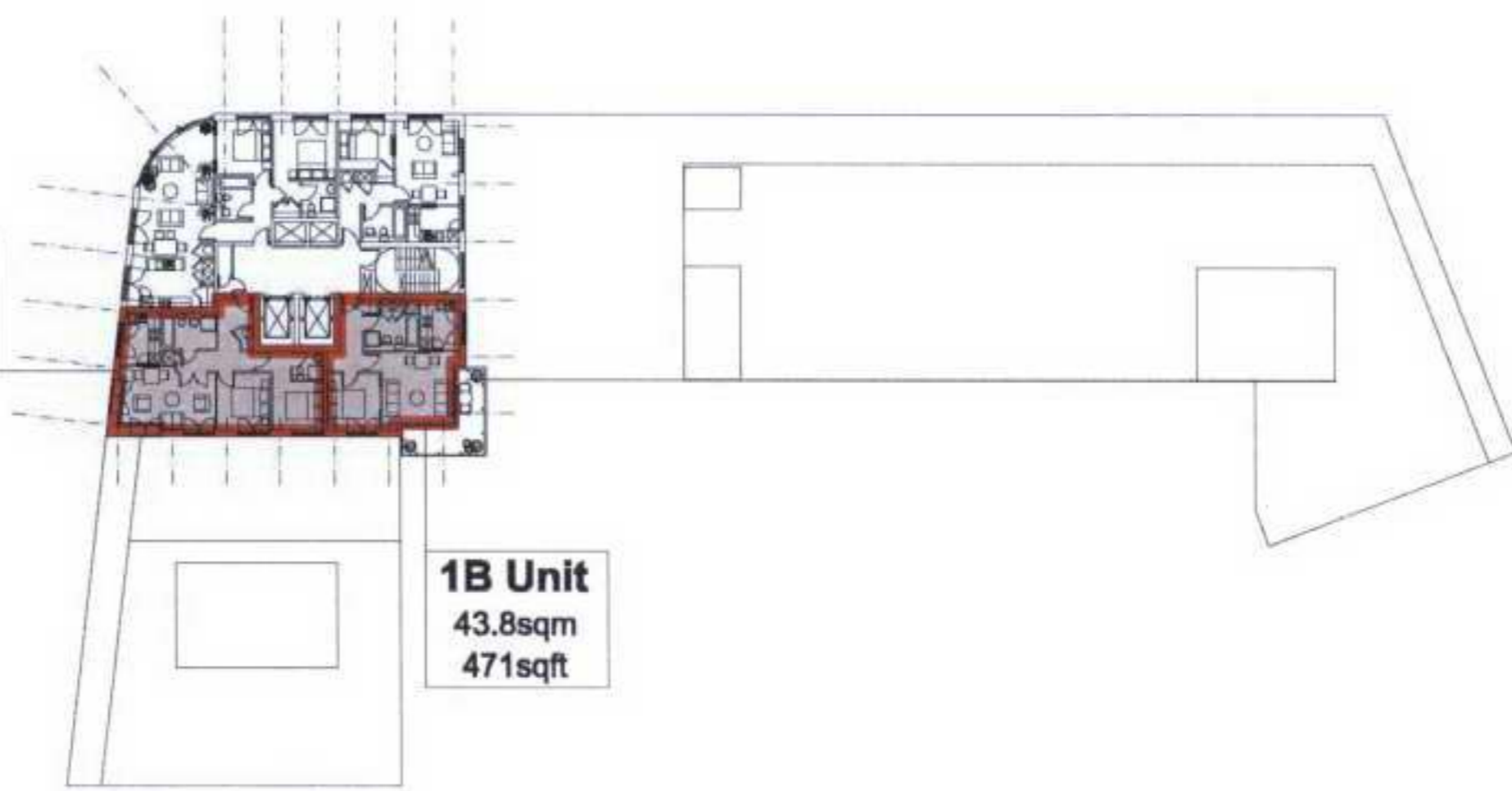


TRINITY MEWS
17th Floor



TRINITY MEWS
16th Floor

2B Unit
60sqm
646sqft



1B Unit
43.8sqm
471sqft



NOTE:
Previously approved drawing - area as indicated to be amended.

British Land

FARRELLS

REGENT'S PLACE
OSNABURGH STREET
RESIDENTIAL UPPER LEVELS
PLANNING APPLICATION
SCALE 1:200 @A0
RPPA05-112-F
09 September 2005



SCALE 1:200 @A0
RPPA05-112-F

0m 10 20

TRINITY MEWS
16, 17, 18, 19



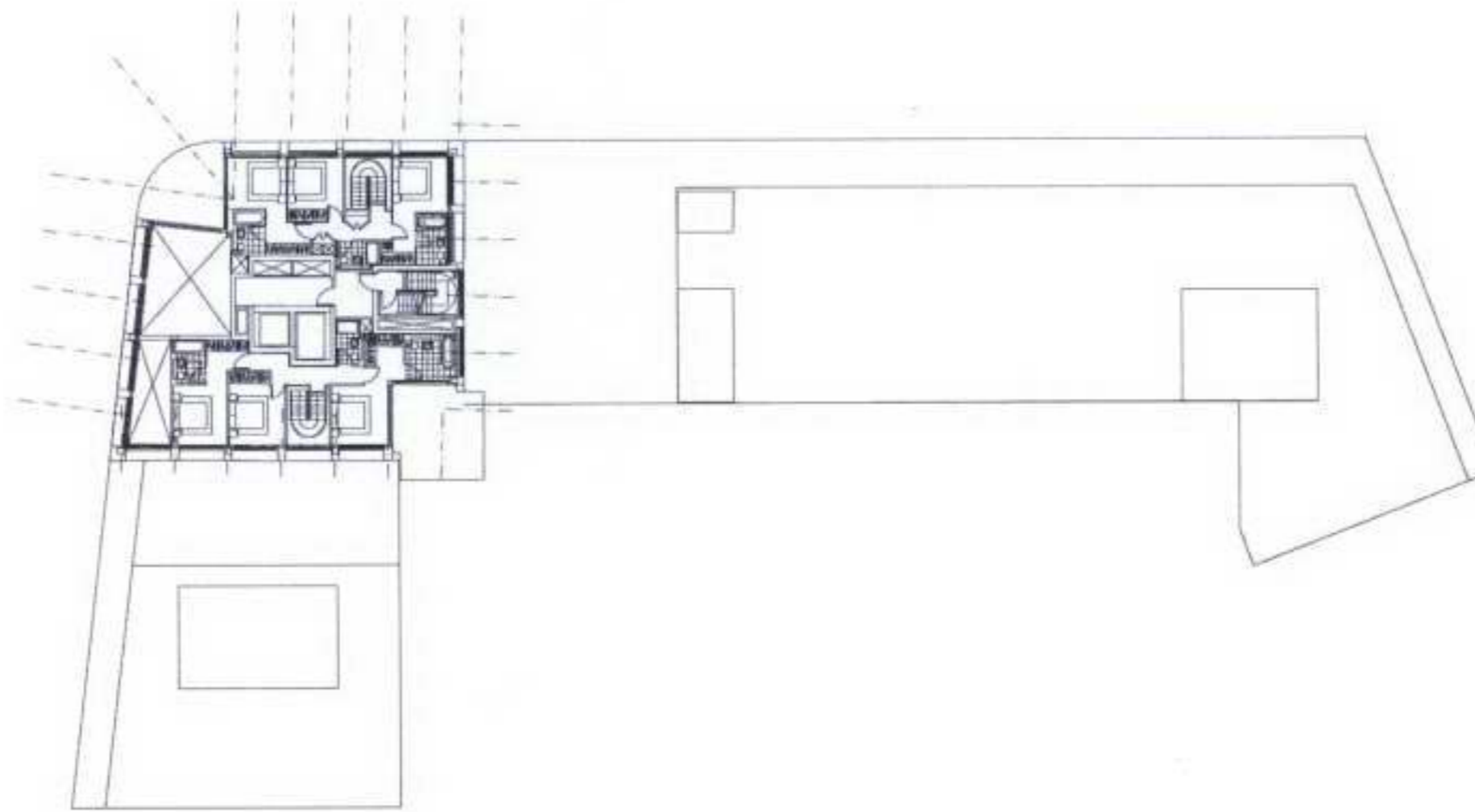
No 1 SOANE ST

No 1 GREAT
PORTLAND SQ

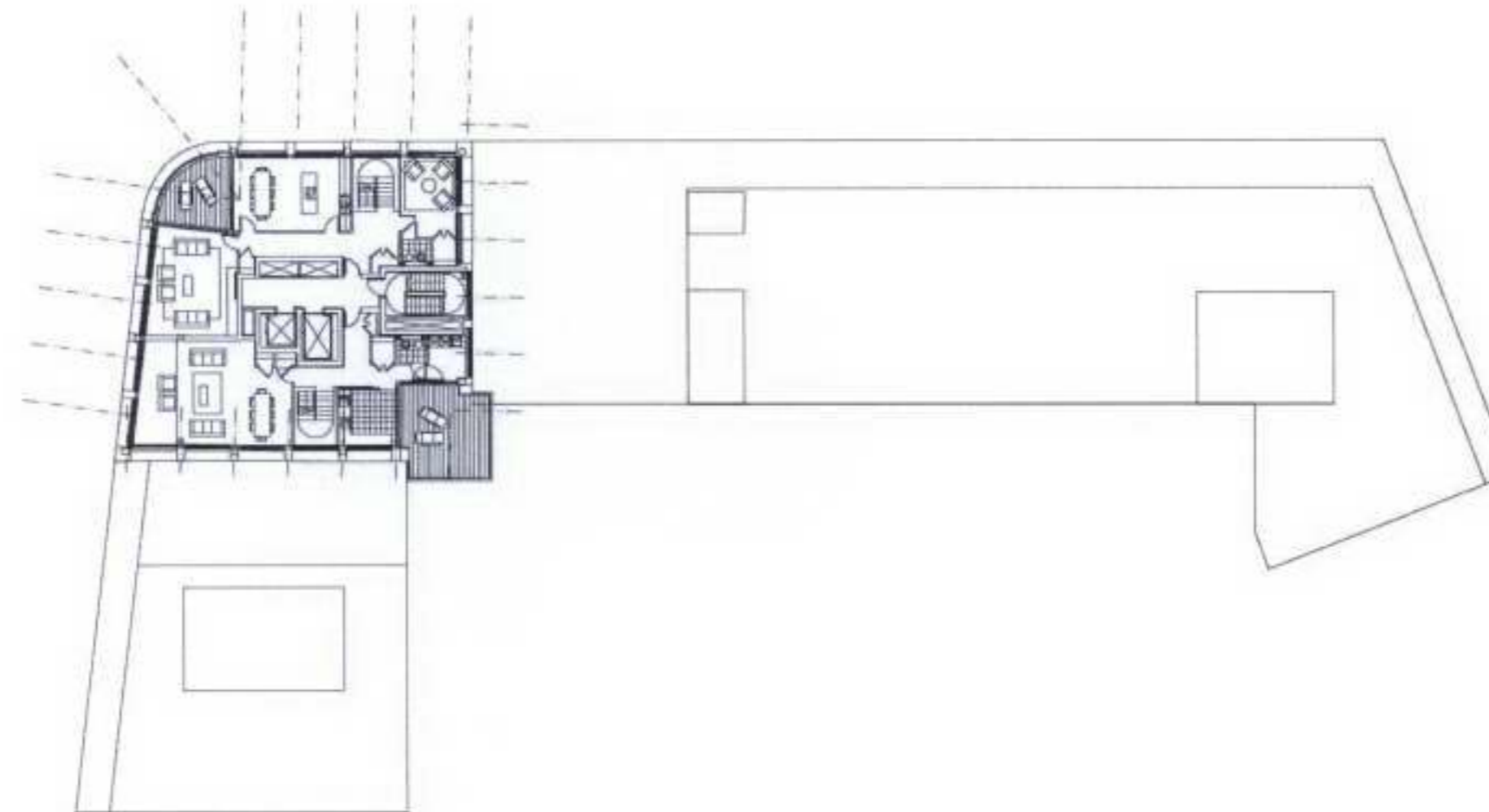


Proposed Amendments to Planning Drawing

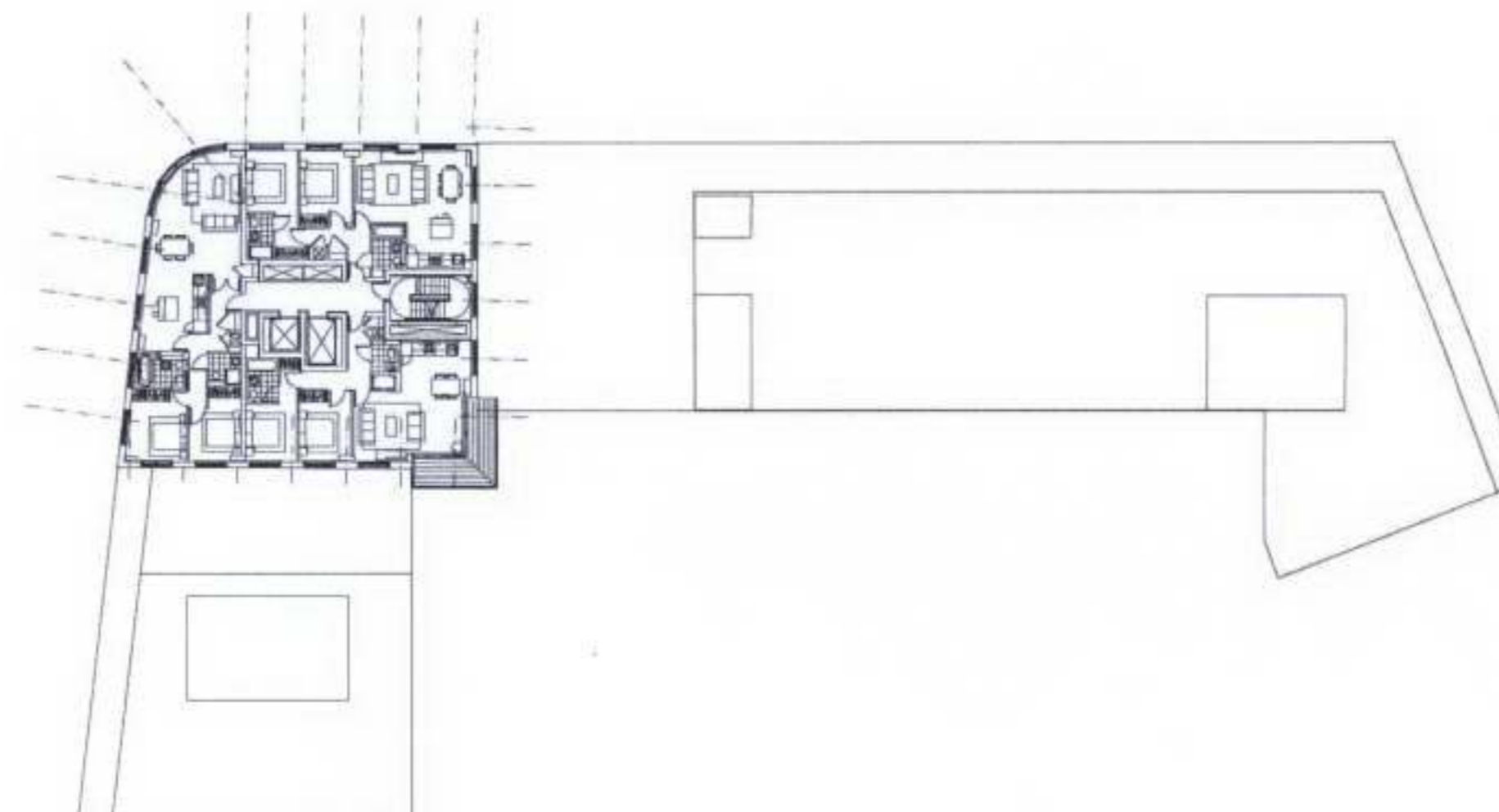
TRINITY MEWS
19th Floor



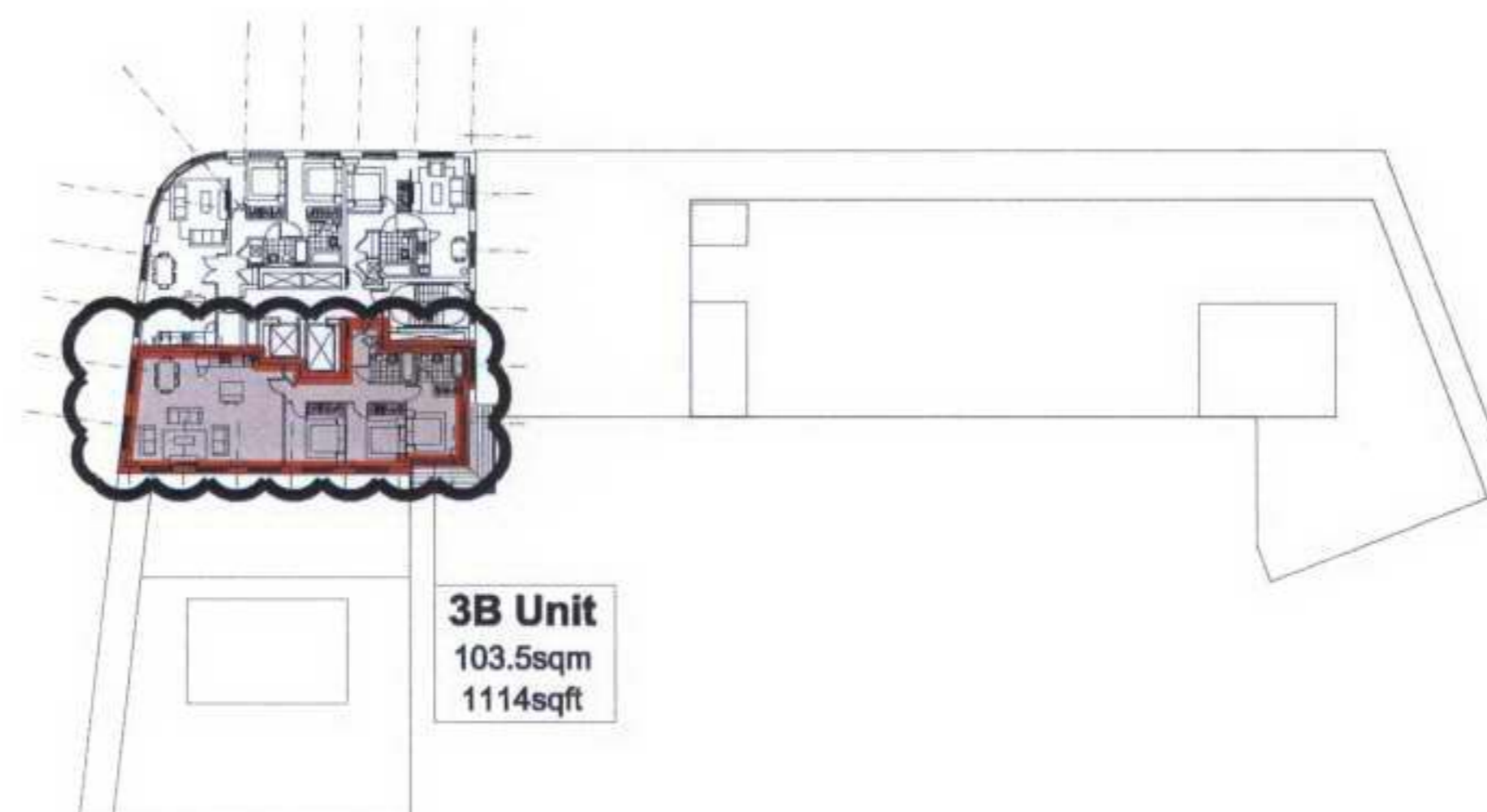
TRINITY MEWS
18th Floor



TRINITY MEWS
17th Floor



TRINITY MEWS
16th Floor



3B Unit
103.5sqm
1114sqft



NOTE:
Proposed amendments as indicated within the bubbled area.

British Land

FARRELLS

REGENT'S PLACE
OSNABURGH STREET
RESIDENTIAL UPPER LEVELS
PLANNING APPLICATION
SCALE 1:200 @A0
Revised 21 February 2007
RPP/PA/05-112-F.1
09 September 2005



0m 10 20

SCALE 1:200 @A0
RPP/PA/05-112-F.1

TRINITY MEWS
16, 17, 18, 19

No 1 BOANE ST

No 1 GREAT
PORTLAND SQ

